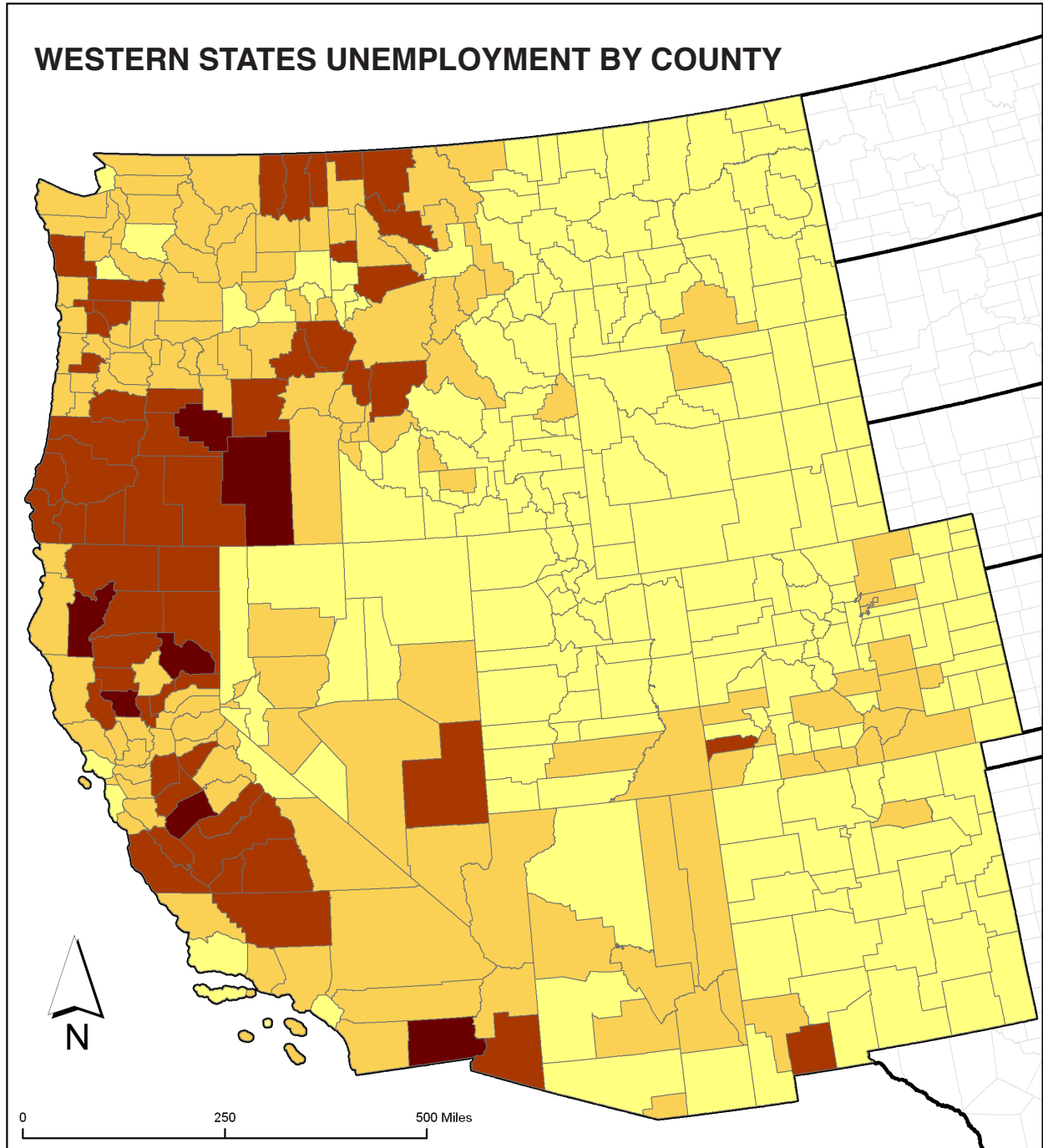


# Unemployment, Poverty, and Federal Lands

BRIEFING PAPER #15

## WESTERN STATES UNEMPLOYMENT BY COUNTY



### March 2009 Unemployment

- Less than 8.5 Percent (the national average)
- 8.6 - 13.9 Percent
- 14.0 - 19.9 Percent
- 20.0 - 25.6 Percent

Sources: State Employment Departments/Bureau of Labor Statistics  
Not seasonally adjusted



UNIVERSITY OF OREGON

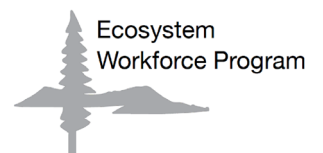
Institute for a Sustainable Environment

5247 University of Oregon

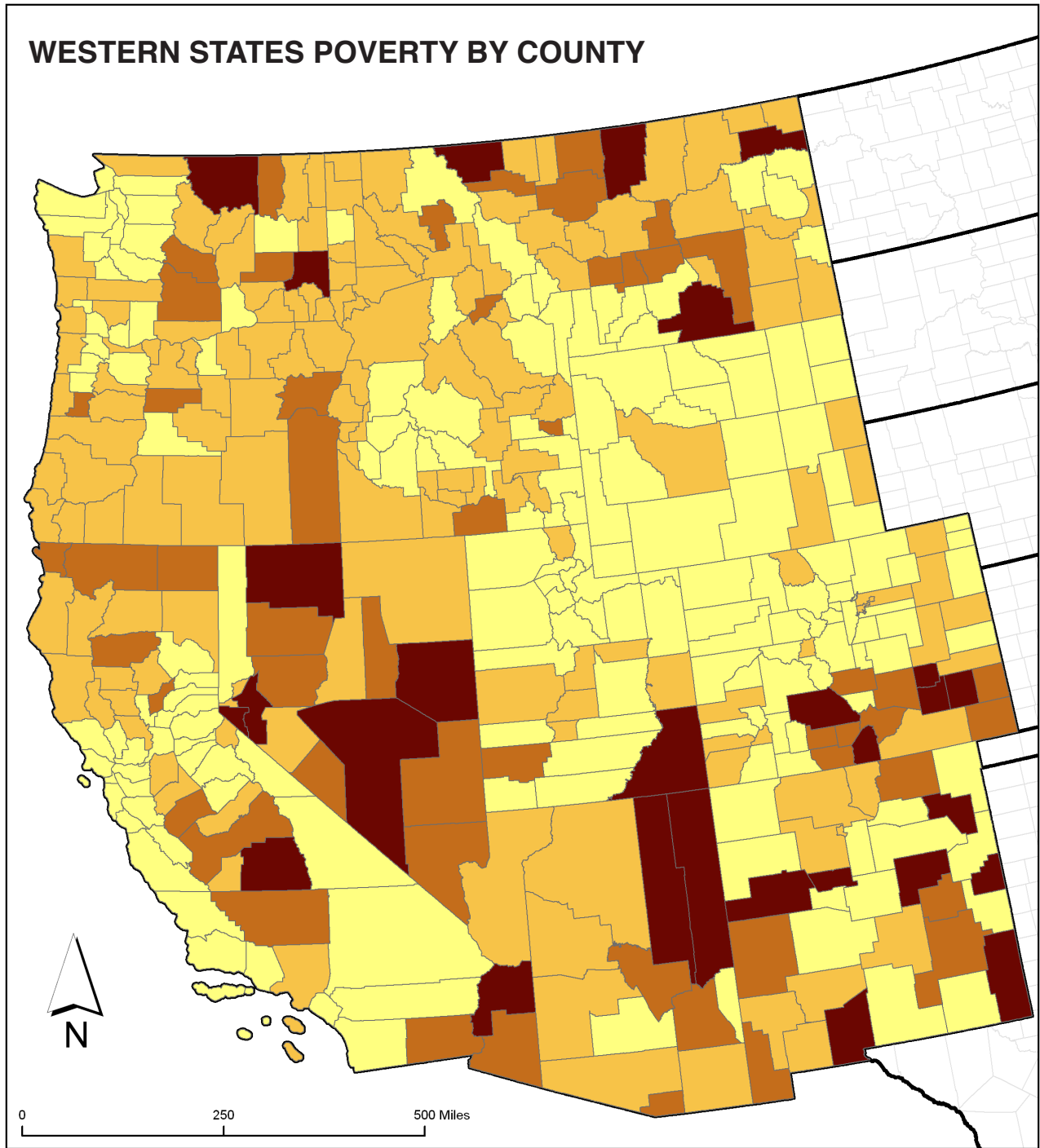
Eugene, OR 97403-5247

T (541) 346-4545 F (541) 346-2040

ewp@uoregon.edu <http://ewp.uoregon.edu>



# WESTERN STATES POVERTY BY COUNTY



## Living in Poverty (2007)

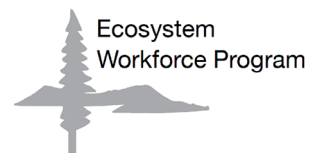
- Less than 12.5 Percent (the national average)
- 12.6 - 17.5 Percent
- 17.6 - 22.5 Percent
- More than 22.6 Percent

Sources: US Census Bureau; ACS 2007

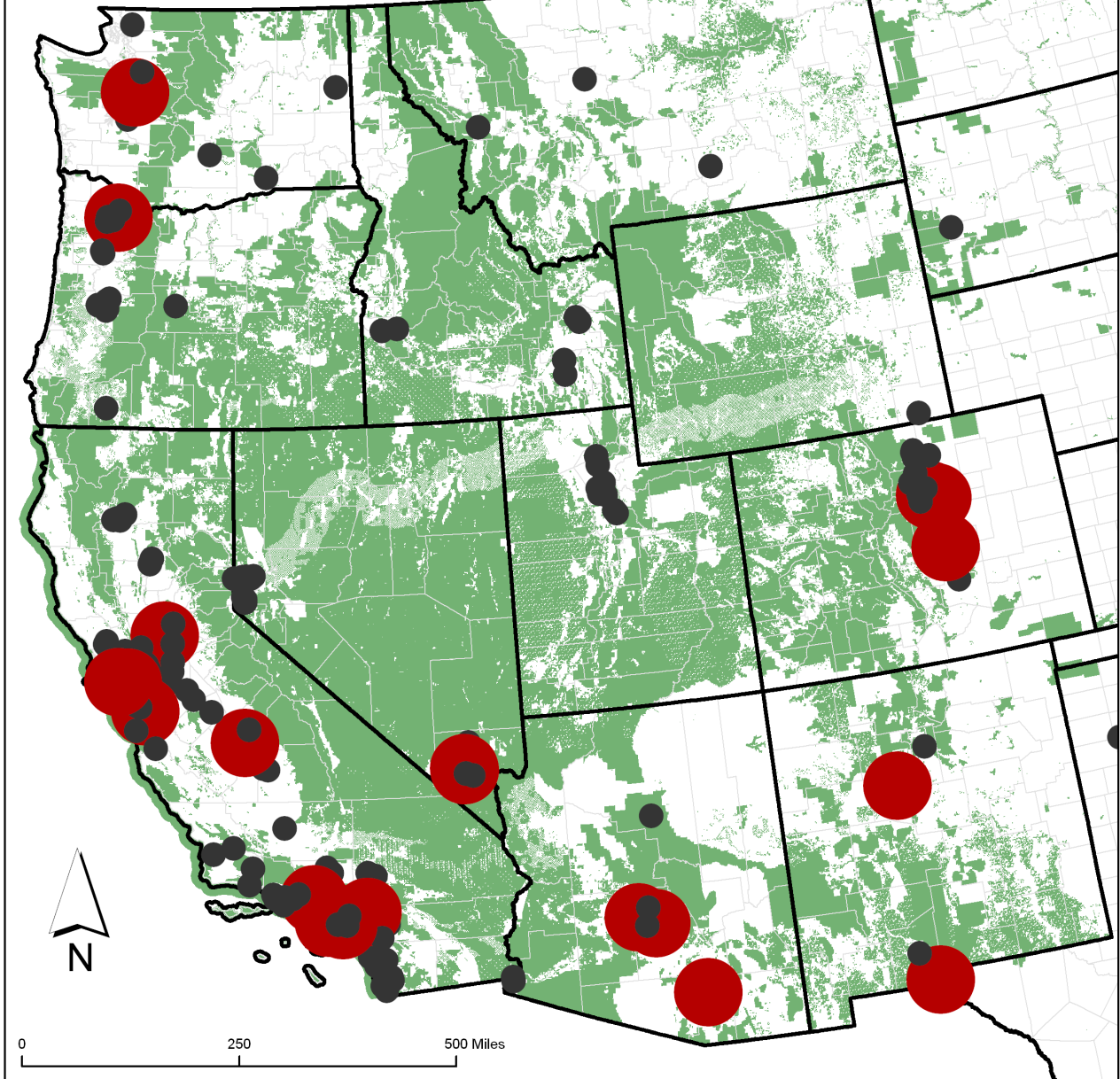


UNIVERSITY OF OREGON

**Institute for a Sustainable Environment**  
5247 University of Oregon  
Eugene, OR 97403-5247  
T (541) 346-4545 F (541) 346-2040  
ewp@uoregon.edu <http://ewp.uoregon.edu>



# WESTERN STATES FEDERAL LANDS AND POPULATION CENTERS



**Urban Populations**

- 50,000 - 250,000
- Greater than 250,000
- Federal Lands
- Counties

Sources: US Census 2008 Tiger/Line Shapefiles; The National Atlas



UNIVERSITY OF OREGON

**Institute for a Sustainable Environment**  
 5247 University of Oregon  
 Eugene, OR 97403-5247  
 T (541) 346-4545 F (541) 346-2040  
 ewp@uoregon.edu <http://ewp.uoregon.edu>

