

Ventura County
Community Wildfire Protection Plan
prepared by the
Ojai Valley Fire Safe Council



Revision: B9
Date: March 9, 2010

Ojai Valley Fire Safe Council
910 East Aliso Street
Ojai, CA 93023
(805) 646-7307
<http://www.firesafeojai.org>
info@firesafeojai.org

NOTE: An electronic version of this document containing very high resolution map images can be obtained by sending an eMail request containing your physical address to: info@firesafeojai.org

Contents

1 EXECUTIVE SUMMARY1

2 INTRODUCTION2

 2.1 What is a “community at risk”? 2

 2.2 Definition of Wildland Urban Interface (WUI) 2

 2.3 Requirements of a CWPP 2

 2.4 Collaboration, Support and Basis for this CWPP 4

3 CWPP CERTIFICATION6

4 VENTURA COUNTY7

 4.1 General Information 7

 4.2 Environment, Weather and Vegetation Types 10

 4.3 Population, Housing and Business 12

 4.4 Recreation Use 12

 4.5 Firefighting Responsibility Areas 15

5 WILDFIRE HAZARD AND RISK WITHIN VENTURA COUNTY16

 5.1 Chaparral Conditions and Wildfire in the Plan Area 16

 5.2 Risk Assessment 18

6 ASSETS AT RISK21

 6.1 Strategies for Reducing Risk within the Communities at Risk..... 23

7 WILDFIRE PROTECTION PRIORITIES24

 7.1 Vegetation Management Methods 24

 7.2 Wildfire Safety Project Priorities 24

8 REDUCING STRUCTURAL IGNITIONS25

 8.1 Causes of Structural Ignition 25

 8.2 Creating Ignition-Resistant Structures 25

9 PLAN MONITORING AND MAINTENANCE.....27

APPENDIX A – WEED ABATEMENT PARCEL MAPS FOR INDIVIDUAL COMMUNITIES AT RISK28

APPENDIX B: COMMUNITIES AT RISK - ASSETS43

APPENDIX C – WILDFIRE SAFETY PROJECTS WITHIN VENTURA COUNTY58

1 Executive Summary

The Healthy Forest Restoration Act (HFRA) enacted by the U.S. Congress on Jan 7, 2003 established a protocol for the creation of a type of document that articulated a wildfire safety plan for communities at risk from wildland fires – a Community Wildfire Protection Plan (CWPP).

This document is a CWPP for all of Ventura County. As specified by the HFRA, this Ventura County CWPP was developed in collaboration with local, county, state and federal agencies as well as various community organizations within the county. The CWPP identifies wildfire risks and clarifies priorities for funding and programs to reduce impacts of wildfire on the communities at risk within Ventura County.

This CWPP is designed to be a “living” document in order to adapt to changes in the environment and changes in the needs of the various stakeholders that are party to it. This version is the first county-wide CWPP for Ventura County, and ideas for improvement and additions from all interested parties are welcome.

2 Introduction

2.1 What is a “community at risk”?

According to the HFRA, a community can be designated an “at-risk community” if it is a community –

- (A) that is listed in the notice entitled “Wildland Urban Interface Communities Within the Vicinity of Federal Lands That Are at High Risk From Wildfire”¹
- (B) in which conditions are conducive to a large-scale wildland fire disturbance event; and
- (C) for which a significant threat to human life or property exists as a result of a wildland fire disturbance event.

The communities at risk identified in this document have met this requirement and have been listed in the Federal Register since 2001²

2.2 Definition of Wildland Urban Interface (WUI)

In describing interface areas, there are two basic types of areas. The term “interface” refers to housing areas with less than 50% density of vegetation that are near a wildland area – an example would be housing units in a subdivision that is near a wildland area. The term “intermix” refers to housing areas with wildland vegetation density greater than or equal to 50% – an example would be a wildland area with housing units interspersed within it.

The definition of WUI used in this document includes the designated communities at risk, areas up to 1.5 miles from the boundaries of the communities at risk, and any interface or intermix area within the county with a housing density greater than 16.1 housing units per square mile³.

2.3 Requirements of a CWPP

The specific topics to be addressed by a CWPP are listed in the HFRA. This Ventura County CWPP was developed according to HFRA guidelines, which define the term “community wildfire protection plan” to mean a plan for an at-risk community that –

- (A) is developed within the context of the collaborative agreements and the guidance established by the Wildland Fire Leadership Council and agreed to by the applicable local government, local fire department, and State agency responsible for forest management, in consultation with interested parties and the Federal land management agencies managing land in the vicinity of the at-risk community;

¹ issued by the Secretary of Agriculture and the Secretary of the Interior in accordance with title IV of the Department of the Interior and Related Agencies Appropriations Act, 2001 (114 Stat. 1009) (66 Fed. Reg. 753, January 4, 2001)

² http://www.cafirealliance.org/communities_at_risk/communities_at_risk_list?filter_field=county_name&filter_text=ventura

³ <http://silvis.forest.wisc.edu/library/WUIDefinitions2.asp>

- (B) identifies and prioritizes areas for hazardous fuel reduction treatments and recommends the types and methods of treatment on Federal and non-Federal land that will protect one or more at-risk communities and essential infrastructure; and
- (C) recommends measures to reduce structural ignitability throughout the at-risk community.

2.4 Collaboration, Support and Basis for this CWPP

Public awareness of the risk of wildfire in Ventura County has never been higher. The loss of hundreds of homes during two very recent wildfires in neighboring Santa Barbara County has dramatically illustrated the need for wildfire safety protection projects to be undertaken.

Building on the proven and highly effective Weed Abatement Program implemented by Ventura County Fire Department as part of their Fire Hazard Reduction Program⁴, this CWPP document, following the guidelines established by the HFRA, documents and prioritizes the projects that the stakeholders within communities at risk in Ventura County have identified. This paves the way for granting agencies to prioritize projects consistent with the CWPP and provides for expedited environmental procedures⁵ for those agencies or others executing these projects.

This CWPP has been developed as a collaborative effort of many agencies, groups and stakeholders in Ventura County. Numerous small meetings were held with stakeholders; four large, interactive public meetings were held, and hundreds of eMail, telephone and direct communications were exchanged. Those represented at meetings or through written, face-to-face and/or telephone communications included:

- Cal Fire PFE Region Chief
- Cal Fire, Unit Chief, SLO
- California Dept. of Fish and Game
- California Fire Safe Council
- California Highway Patrol
- Central Ventura County Fire Safe Council
- Conejo Open Space Conservation Agency
- Southern California Edison
- Fillmore Fire Dept
- Local Arborist
- Local Businesses
- Local Government, City Manager Camarillo
- Local Government, City Manager Fillmore
- Local Government, City Manager Moorpark
- Local Government, City Manager Ojai
- Local Government, City Manager Oxnard
- Local Government, City Manager Port Hueneme
- Local Government, City Manager Santa Paula
- Local Government, City Manager Simi Valley
- Local Government, City Manager Thousand Oaks

⁴ The Ventura County Fire Hazard Reduction Program (FHRP) is described in Chapter 6, Section 2 of the Ventura County Fire Protection District Training Manual

⁵ In every applicable project, all NEPA and CEQA requirements must still be met. This is determined on a project by project basis by the relevant state and federal agencies involved.

- Local Government, City Manager Ventura
- Local Land Owners
- Local Ranchers
- Local Resource Conservation District
- National Park Service, Santa Monica Mts National Recreation Area
- Natural Resources Advisor, University of California
- Natural Resources Conservation Service
- Public Information Officer , Thousand Oaks
- Santa Monica Mountains National Recreation Area
- Santa Paula Fire Dept
- U.S. Fish & Wildlife Service, Hopper Mountain National Wildlife Refuge
- U.S. Fish & Wildlife Service, Southern California Fire Management Zone, Wildland-Urban Interface Coordinator
- U.S. Fish & Wildlife Service, Southern California Fire Management Zone
- USDA Forest Service, Ojai Ranger Dist., Los Padres Public Information Officer
- Ventura City Fire Department, Fire Chief
- Ventura City Fire Department, Fire Marshal
- Ventura County Agricultural Commissioner
- Ventura County Board of Supervisors, District 1, Supervisor
- Ventura County Board of Supervisors, District 2, Supervisor
- Ventura County Board of Supervisors, District 3, Chair
- Ventura County Board of Supervisors, District 4, Supervisor
- Ventura County Board of Supervisors, District 5, Supervisor
- Ventura County Farm Bureau
- Ventura County Fire Protection District, Captain, Pre-Fire Planner
- Ventura County Fire Protection District, Fire Chief
- Ventura County Fire Protection District, Interim Fire Marshall
- Ventura County Fire Protection District, Public Information Officer
- Ventura County Sheriff, Program Admin.
- Ventura County Watershed Protection District

3 CWPP Certification

The Ventura County Community Wildfire Protection Plan was developed in accordance with the guidelines set forth by the Healthy Forests Restoration Act.

This plan –

- was collaboratively developed – interested parties and federal land management agencies managing land in the region of Ventura County have been consulted; and
- identifies and prioritizes areas for hazardous fuels reduction treatments and recommends the types and methods of treatment to reduce the wildfire threat to values at risk in the county; and
- recommends measures to reduce the ignitability of structures throughout the area addressed by the plan.

The following representatives of the entities required for CWPP approval mutually agree with and approve of the contents of this Community Wildfire Protection Plan:

Linda Parks

LINDA PARKS, Chair, Ventura County Board of Supervisors



March 23, 2010

Date

Bob Roper

Bob Roper, Chief, Ventura County Fire Protection District

2-1-10

Date

Matt Jenkins

Matt Jenkins, Unit Chief, Cal Fire

1/20/10

Date

4 Ventura County

4.1 General Information

Ventura County is a coastal county in Southern California covering 1,845 square miles. The northern half of the county lies within the Los Padres National Forest, concentrating the population mostly in the southern part of the county. The Los Padres National Forest accounts for 860 square miles of the northern portion of the county, comprising 46% of the county's land area.

With its southern edge on the Pacific Coast of Southern California, Ventura County is bordered by Los Angeles County to the east, Santa Barbara County to the west, and Kern County to the north (see map in Figure 1: The CWPP Area (Ventura County)).

Within Ventura County there are fourteen (14) at-risk communities, clustered in the southern half of the county (see map in Figure 2: Communities at Risk).

- Camarillo
- Casa Conejo
- Fillmore
- Meiners Oaks
- Mira Monte
- Moorpark
- Oak Park
- Oak View
- Ojai
- Piru
- Santa Paula
- Simi Valley
- Thousand Oaks
- Ventura

Figure 1: The CWPP Area (Ventura County)

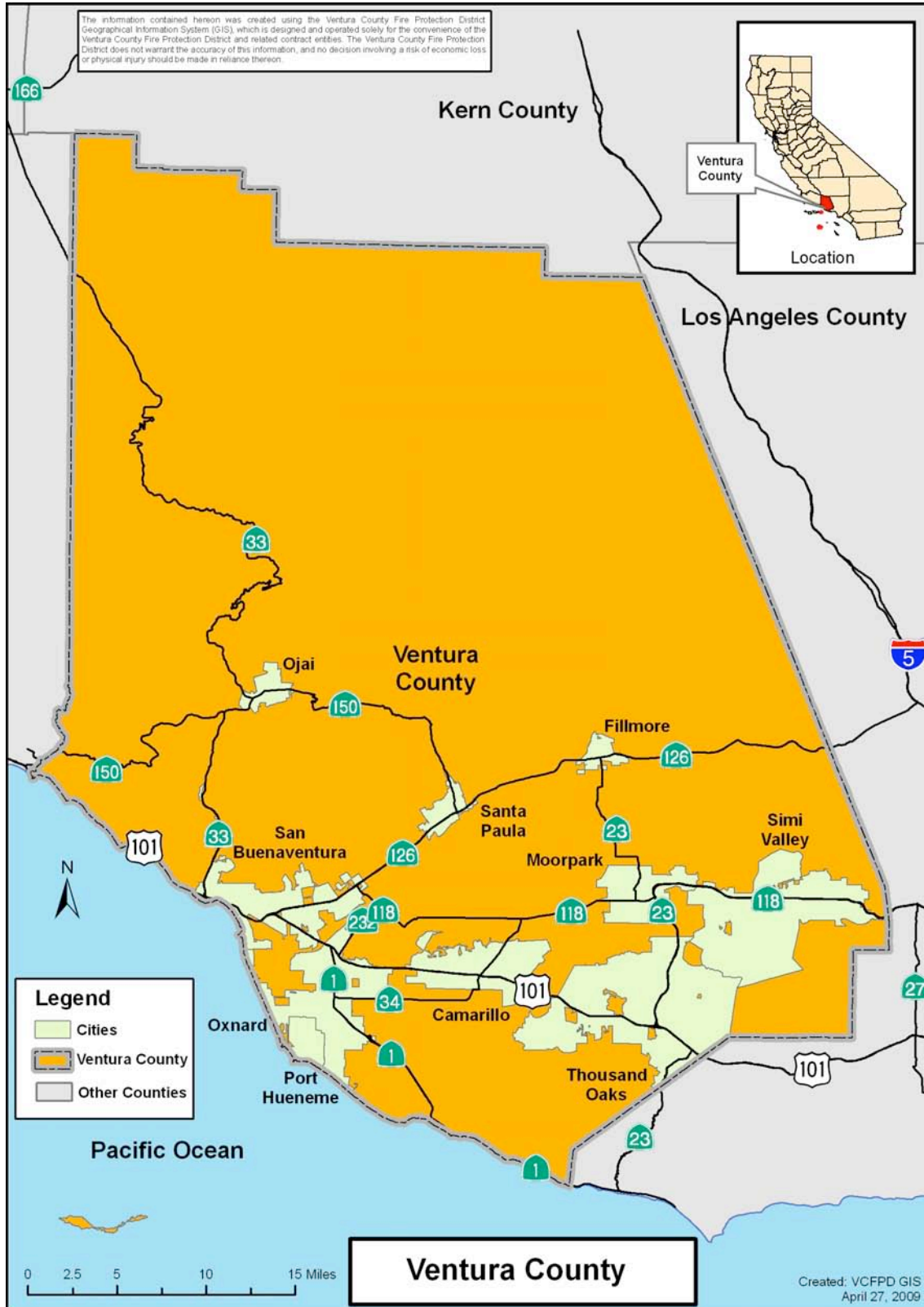
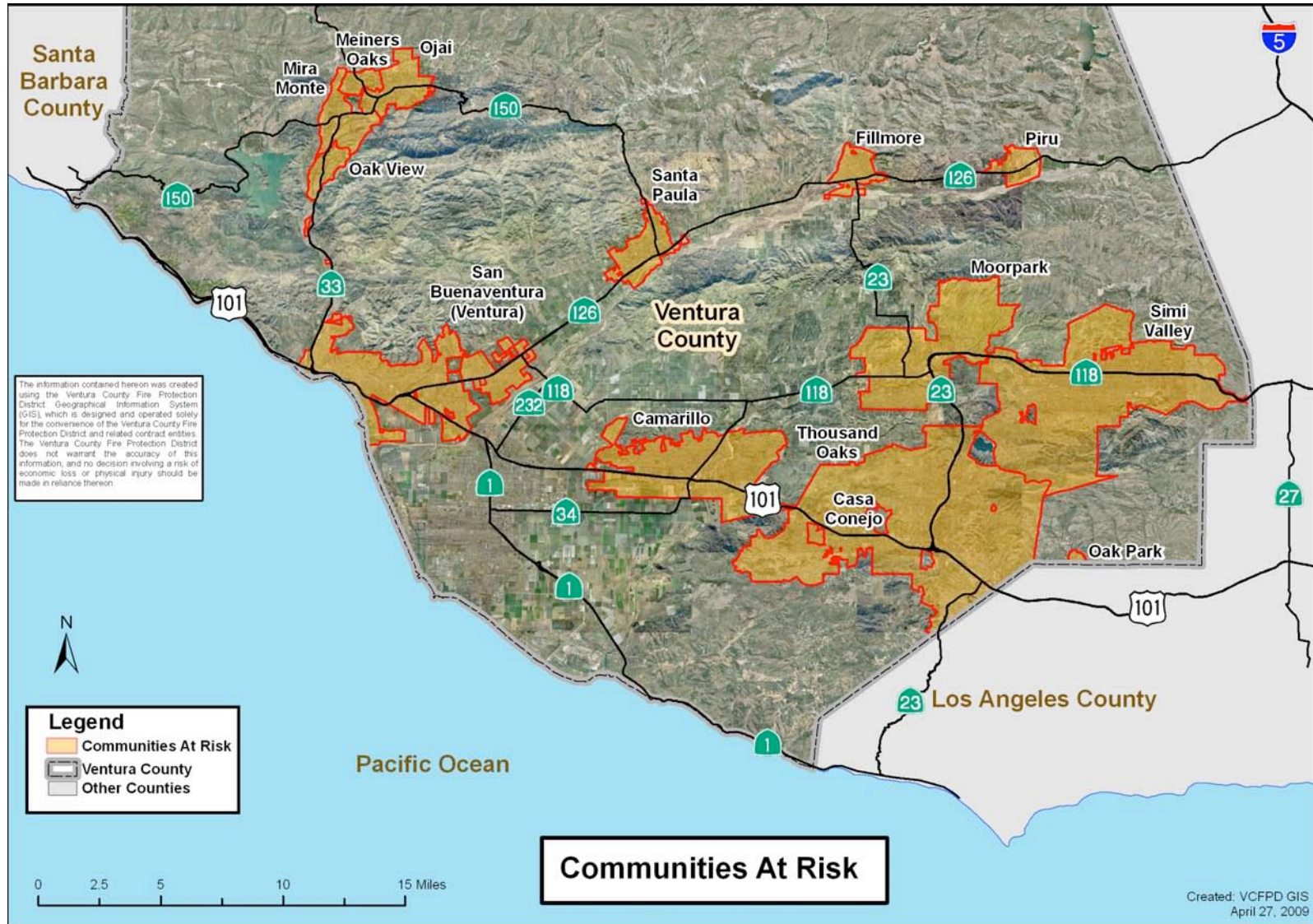


Figure 2: Communities at Risk



4.2 Environment, Weather and Vegetation Types

According to the Koppen-Geiger Climate Classification System, all of Ventura County is considered a Mediterranean Dry-Summer Climate⁶. The Mediterranean Dry-Summer Climate has cool, wet winters and warm, dry summers. The presence of chaparral, a drought-resistant variety of vegetation that is dependent upon occasional wildfires, is expected in Mediterranean Dry-Summer climates.

Far from being uniform in its environment, Ventura County is a diverse ecosystem containing a total of six (6) distinct types of microclimate areas (more than any other county in the nation). These microclimates and the predominant vegetation types associated with them are:

- 1) highlands and mountains (within the Western Transverse Ranges) – The native plant communities of the Transverse ranges include coastal sage scrub, chaparral (lower chaparral, upper chaparral, and desert chaparral), oak woodland and savanna, and pinyon-juniper woodland at lower elevations, and yellow pine forest, and subalpine forest at higher elevations.⁷
- 2) coastal plains (within the Oxnard Plain) – developed area, oaks present, no appreciable fuel load
- 3) coastal strip (along the coastline) – coastal sage scrub and northern mixed chaparral⁸
- 4) interior valleys (within the Ojai Valley) – oaks, light to medium northern mixed chaparral
- 5) interior valleys with coastal influence (within the Santa Clarita Valley) – oaks, chemise, black sage, purple sage and California sagebrush⁹
- 6) interior valleys without coastal influence (within the Conejo and Simi Valleys) – developed areas bordered by northern mixed chaparral, chemise chaparral, oaks and coastal sage scrub¹⁰

The burn regions shown on the map in Figure 3: Air Pollution Control District “Burn Regions” Map roughly correspond to the microclimates and vegetation types described above.

⁶ from website published by Jessica Douglas, <http://geography-venturacounty.info/Section%2010.htm>

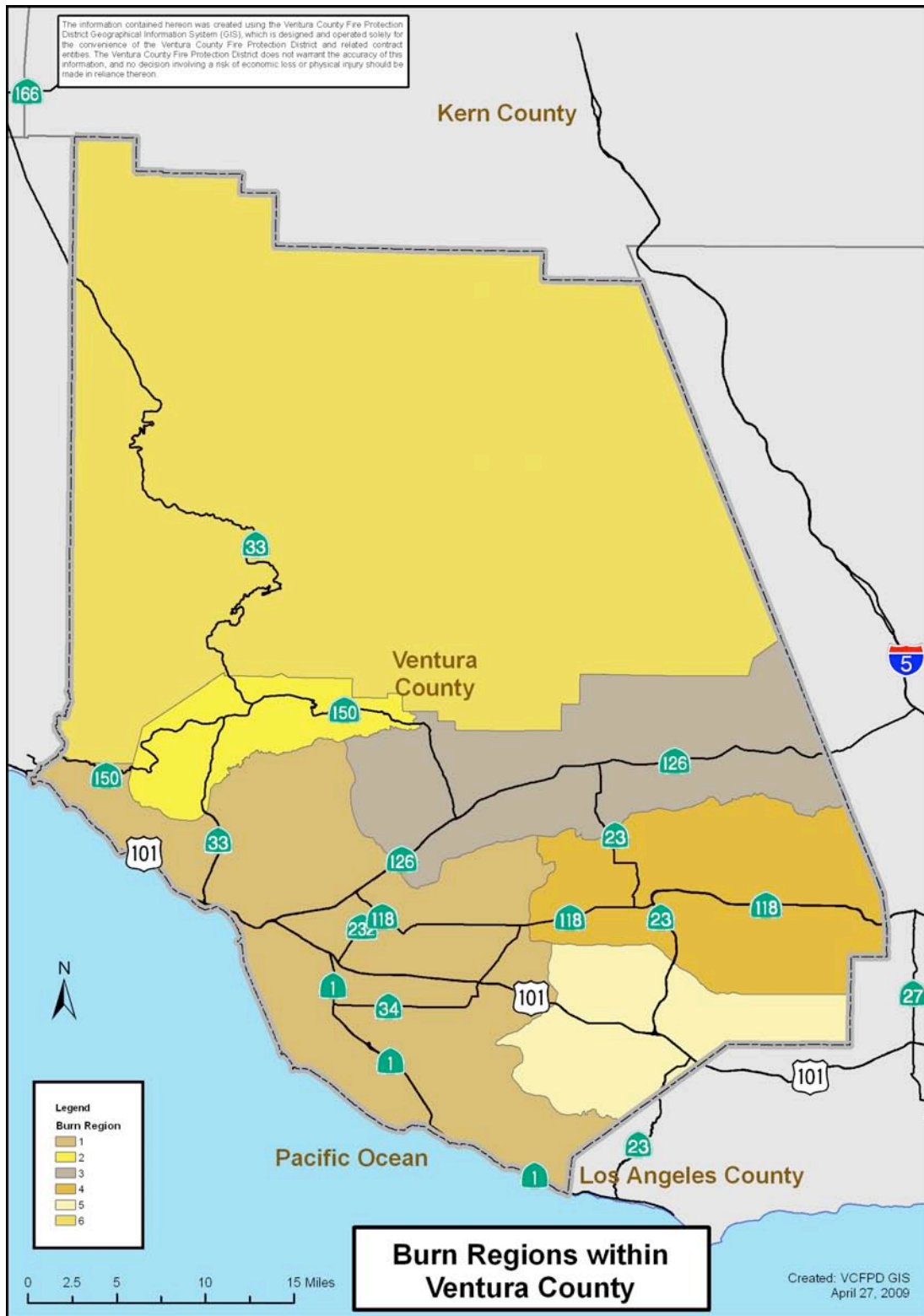
⁷ Schoenherr, Allan A. (1992). *A Natural History of California*. Berkeley, CA: University of California Press.

⁸ from Final Environmental Impact Statement for a Fire Management Plan for the Santa Monica National Recreation Area, September 2005, Figure 3-24, page 3-41

⁹ Castaic Fire Dept. (661) 257-3020, April 2009

¹⁰ from Final Environmental Impact Statement for a Fire Management Plan for the Santa Monica National Recreation Area, September 2005, Figure 3-24, page 3-41

Figure 3: Air Pollution Control District “Burn Regions” Map



4.3 Population, Housing and Business

The most recent U.S. Census data indicates a total county population of 798,000, ranking Ventura County as the 12th most populous county in California. Approximately 71% of that population (535,049 people) live within the communities at risk. It is estimated that there are 13,700 businesses within the communities at risk in Ventura County.

Approximately 76% of the county's housing is within the communities at risk, and less than 20% of those housing units were built after 1990. This means that the vast majority of homes within the communities at risk are older homes that were not built with what we now know to be important protections against the threat of wildfire.

Detailed demographic data by Community at Risk (CAR) is shown in the table below.

Ventura County Demographics					
Community at Risk (CAR)	Total Population	Elderly	Disabled	Number of Homes	Speak English less than "very well"
Camarillo	57,141	7,643	2,691	20,601	2,629
Casa Conejo	3,409	341	151	1,013	286
Fillmore	13,479	1,277	537	3,695	3,109
Meiners Oaks	3,921	362	153	1,282	342
Mira Monte	6,915	1,148	341	2,642	267
Moorpark	32,566	1,472	648	9,346	3,475
Oak Park	2,320	149	48	758	0
Oak View	4,294	304	164	1,409	338
Ojai	7,487	1,350	504	3,048	352
Piru	1,164	87	38	312	222
Santa Paula	31,552	3,093	1,479	8,886	8,858
Simi Valley	115,787	8,708	3,747	37,954	5,253
Thousand Oaks	148,781	17,147	6,406	53,563	6,210
Ventura	106,233	12,836	5,193	40,310	7,651
Total for Communities at Risk	535,049	55,917	22,100	184,819	38,992
All of Ventura County	753,197	73,487	29,164	243,234	95,504
% of CAR population speaking English less than "very well"					7.3%
% of CAR population elderly					10.5%
% of CAR population disabled					4.1%
% of County population within Communities at Risk					71.0%
% of County homes within Communities at Risk					76.0%

4.4 Recreation Use

Recreation areas within Ventura County include the Los Padres National Forest, Sespe Condor Sanctuary, Santa Monica Mountains National Recreation Area, Point Mugu

State Park and the Hungry Valley State Vehicular Recreation Area, as shown in Figure 4: Recreational areas within Ventura County.

Other areas used for recreation include designated wilderness areas whose boundaries fall mostly within the county. These wilderness areas and the number of acres they cover are shown in the table below.

Wilderness Area	Ranger District	Acres
Sespe Wilderness	Ojai Ranger District and Mt. Pinos Ranger District	219,700 acres (includes Sespe Condor Sanctuary)
Matilija Wilderness	Ojai Ranger District	29,600 acres
Chumash Wilderness	Mt. Pinos Ranger District	38,150 acres
	Total acreage:	287,450 acres

Figure 4: Recreational areas within Ventura County



4.5 Firefighting Responsibility Areas

Firefighting responsibility within Ventura County falls into three areas – Local, State and Federal Responsibility Areas, as shown on the map below, Figure 5: Firefighting Responsibility Areas. Ventura County Fire Protection District is the contract provider for fire service to most of the local responsibility areas (shown in tan on the map), with the exceptions of the City Fire Departments in Ventura, Oxnard, Santa Paula, and Fillmore. Ventura County Fire Protection District is also one of the Contract Counties that maintain a contractual relationship with CALFIRE and utilizes the California Fire Plan within Ventura County (CALFIRE areas are shown in olive color on the map). The largest firefighting responsibility area is the Los Padres National Forest, shown in light green, and the USFS maintains the largest firefighting force in the county.

Figure 5: Firefighting Responsibility Areas



5 Wildfire Hazard and Risk within Ventura County

Wildfire in Ventura County's wildlands is a natural occurrence and a part of the process that helps maintain a healthy ecosystem for both plant and animal life. The "hazards" and "risks" discussed within this document are created by human presence around, near and sometimes within these wildlands. Ironically, in an effort to protect human lives and property within and around the Wildland-Urban Interface (WUI), fire suppression policies of recent decades have left millions of acres overgrown and crowded with dense and highly flammable chaparral in rough and difficult-to-access back-country.

The recurrence of large and destructive wildfires within and around Ventura County (such as the more recent Day, Zaca, Tea and Jesusita fires) has raised public awareness of the issue and increased public support for fuel break construction, defensible space creation and wildfire safety education.

So it is important to note that while this document may reference "hazardous fuels", it is not the chaparral itself that is the hazard. Rather, the hazard is created by the combination of homes built within the WUI, in close proximity to the chaparral, many without adequate or well-maintained defensible space, and especially older homes that were not built with wildfire safety in mind (materials, construction and landscaping).

The at-risk communities identified within this CWPP are all in close proximity to chaparral that if ignited would present a high or very high hazard to nearby homes, infrastructure and/or assets, as shown in Figure 6: Fire Hazard Severity Zones within Ventura County. This fact, combined with the rugged terrain, increasingly hot, dry weather, and the seasonal appearance of "Santa Anna" winds that can exceed 100 mph, make wildfire safety projects an extremely high priority within Ventura County.

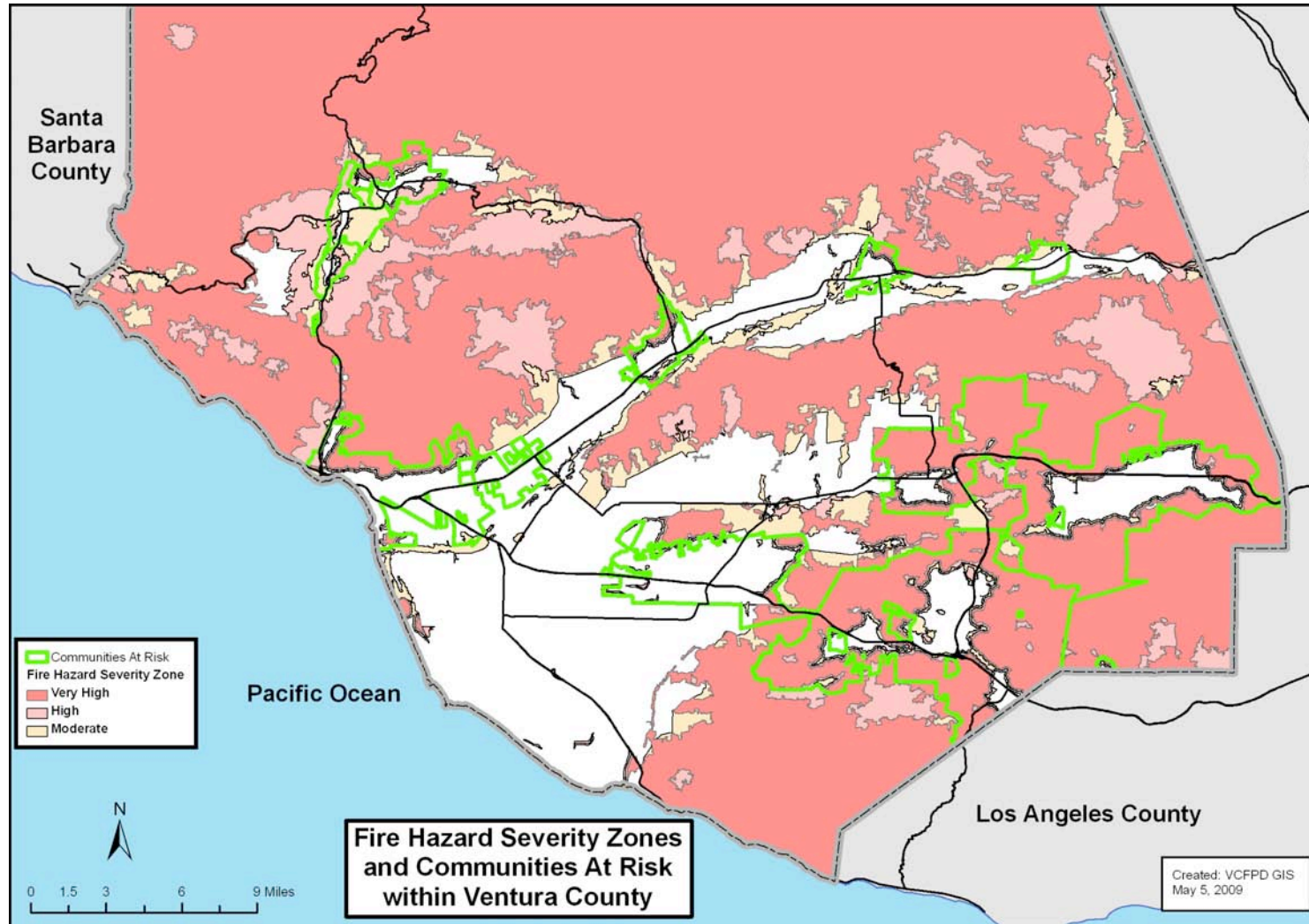
5.1 Chaparral Conditions and Wildfire in the Plan Area

Figure 6: Fire Hazard Severity Zones within Ventura County shows the nature of the challenge within and around the identified communities at risk. Chaparral is the predominant vegetation throughout the county, and the consistently hot, dry weather conditions assure that fuel moisture will be in the danger zone during fire season. Recent weather trends seem to be pointing towards longer-than-normal periods of low fuel moisture and high fire danger.

Extremely rugged terrain surrounds the communities in this plan, increasing the risk of wildfire incursion into the WUI and beyond. In the past few years alone, the Ventura County area has seen numerous wildland fires that each consumed hundreds of thousands of acres, with spot fires extending two miles in advance of the fire front and spread rates occasionally reaching 10,000 acres per hour¹¹.

¹¹ Ventura County Wildland Fire Siege October 2003, page 10,
<http://fire.countyofventura.org/documents/pdfs/Ventura%20County%20Wildland%20Fire%20Siege%20Final.pdf>

Figure 6: Fire Hazard Severity Zones within Ventura County



5.2 Risk Assessment

The Ventura County Fire Protection District has a long-standing, well-documented and highly successful risk assessment and mitigation program in place as part of its Fire Hazard Reduction Program. This program identifies parcels within the county that require weed abatement due to fire risk, notifies the parcel owners of the requirement to perform the weed abatement, and assures that the weed abatement is completed in a timely fashion.

This process provides a clear and definitive map of wildfire risk areas within and around the communities at risk. A county-wide map showing the high-risk areas within the communities at risk is shown in Figure 7: Weed Abatement Notices – All Communities at Risk.

An example of the more detailed maps for each individual community at risk is shown in Figure 8: Weed Abatement Notices – Ojai.

A complete set of maps of the weed abatement program parcels in each of the individual communities at risk is provided in Appendix A: Weed Abatement Parcel Maps for Individual Communities at Risk.

Figure 7: Weed Abatement Notices – All Communities at Risk

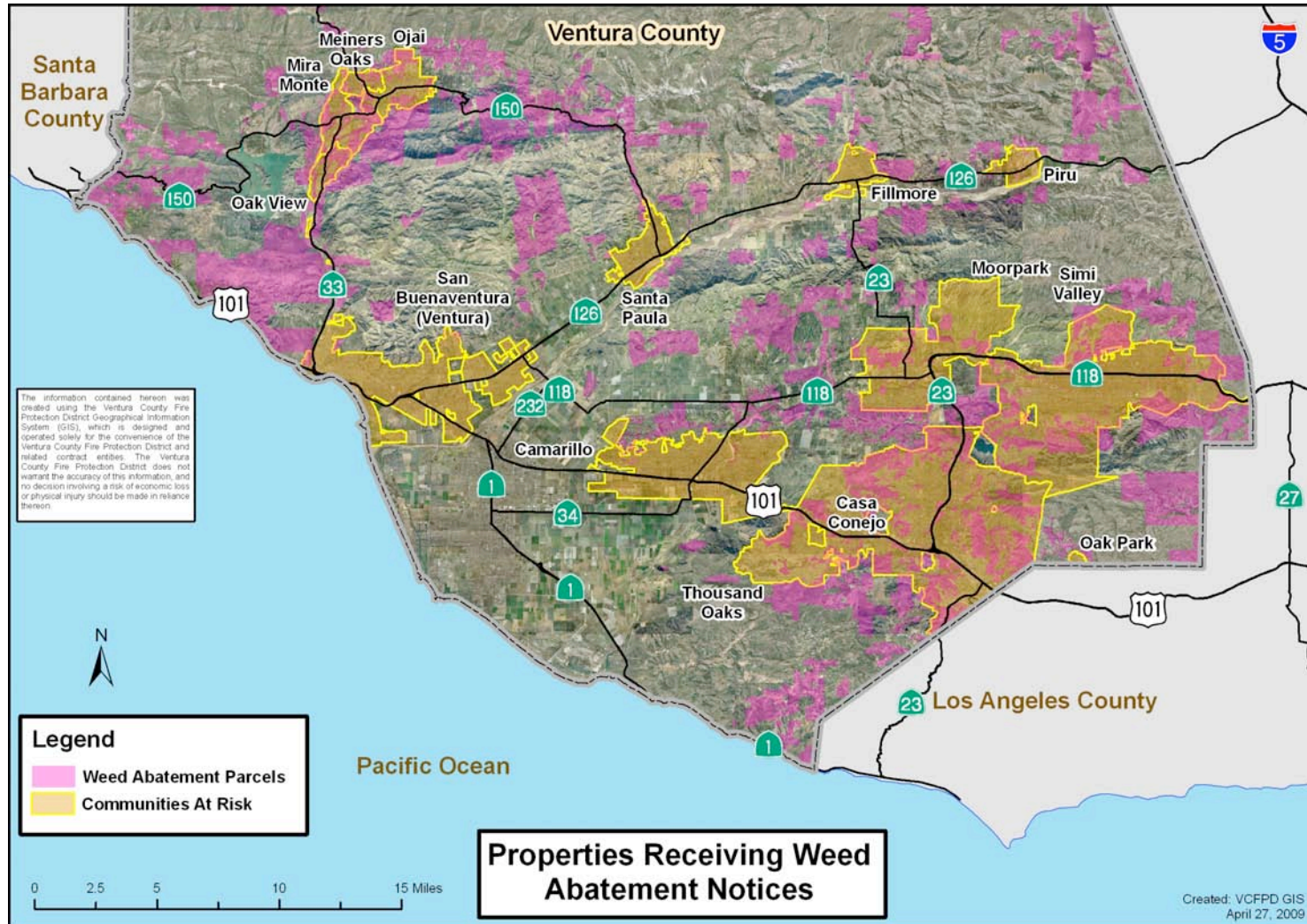
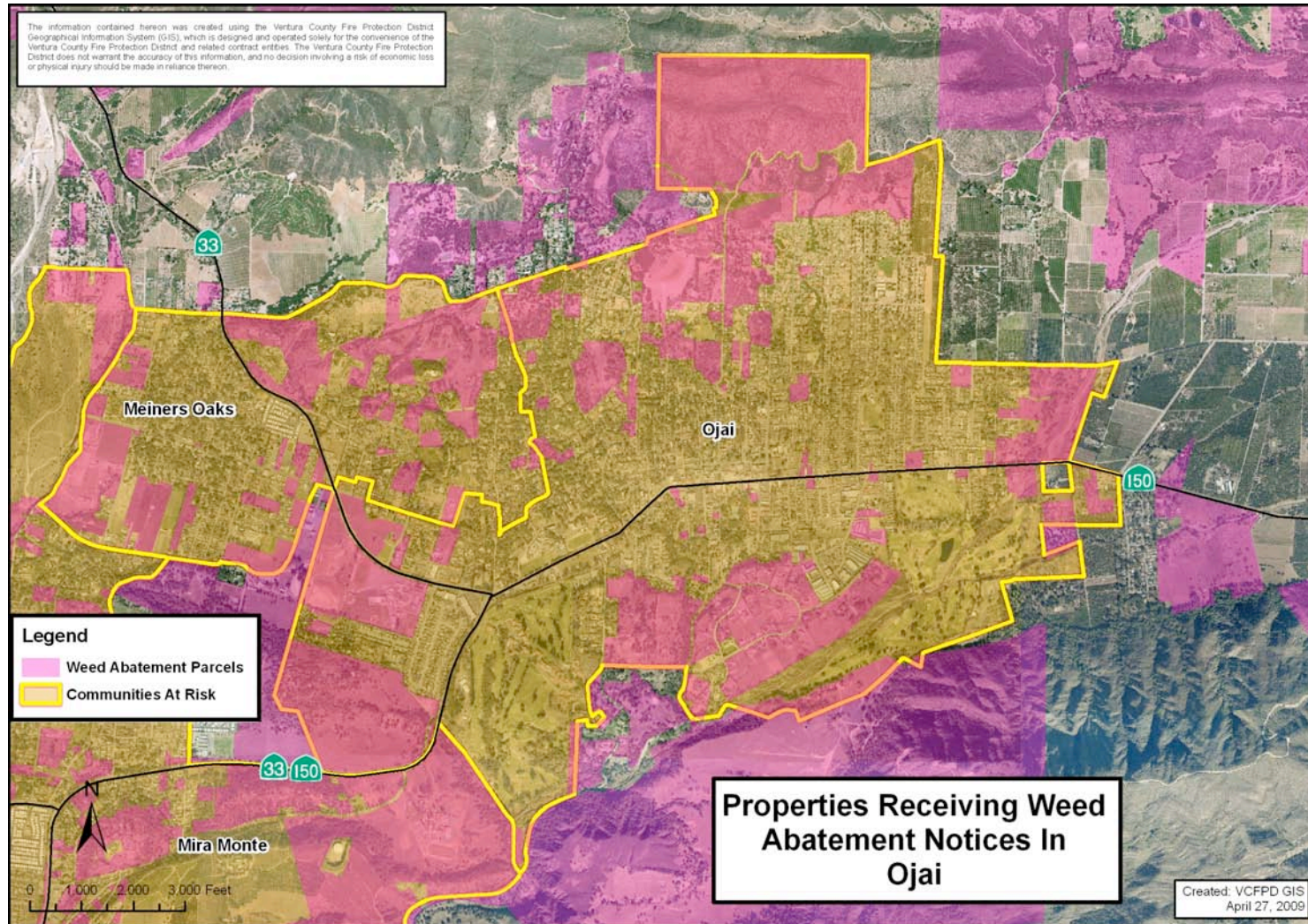


Figure 8: Weed Abatement Notices – Ojai



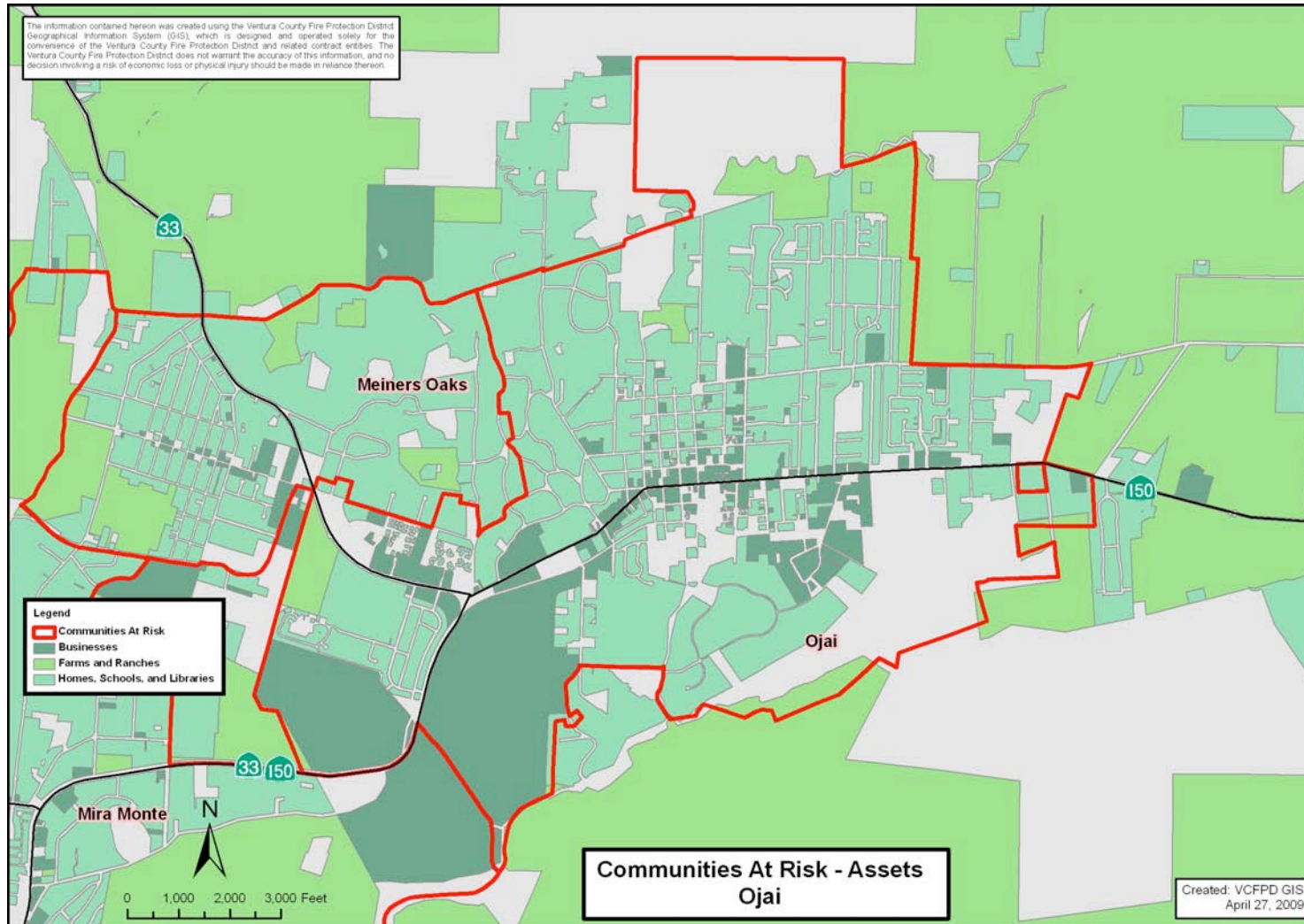
6 Assets at Risk

There are approximately 535,000 people, 185,000 housing units and 13,700 businesses within the communities at risk in Ventura County. Maps showing the assets at risk within each community at risk were prepared. For mapping purposes, the assets were grouped into three categories: 1) non-farm businesses, 2) farms and ranches, and 3) homes, schools and libraries.

A sample asset map is shown in Figure 9: Communities at Risk – Assets (Ojai).

A complete set of asset maps for the individual communities at risk is provided in Appendix B: Communities At Risk - Assets.

Figure 9: Communities at Risk – Assets (Ojai)



6.1 Strategies for Reducing Risk within the Communities at Risk

We know that wildfire plays an important role in the natural ecosystem within Ventura County. We want to prevent human-caused wildfire and minimize risk to lives, property and infrastructure during the wildfire events that will inevitably occur.

Risk factors include:

- Areas with limited or inadequate infrastructure to accommodate access for fire protection equipment or safe evacuation of residents during a wildfire event
- Residential landscapes with dry and/or highly flammable vegetation located close to structures, and inadequate or non-existent defensible space
- Many older homes constructed with flammable building materials and inadequate vent coverings that will allow penetration of embers and flame
- Population with limited education and knowledge regarding fire-safe behaviors and practices
- Communities at risk that have expanded (homes, infrastructure and assets) to the edges of large areas of old-growth chaparral

This plan recommends the following strategies to mitigate these risks:

- Continue existing vegetation management efforts and initiate new projects as appropriate to reduce risks in WUI areas within and around the communities at risk.
- Develop and implement focused community meetings, programs and wildfire safety education efforts directed at structure and property owners in the WUI areas, including topics such as:
 - prevention of accidental starts
 - creation and maintenance of defensible space
 - fire-safe landscaping
 - reduction of structural ignitability, and
 - strategies for safety in a wildfire incident, including emergency evacuation in areas with limited infrastructure.

7 Wildfire Protection Priorities

7.1 Vegetation Management Methods

When necessary, removal and/or modification of vegetation that, if ignited, would present risks to homes, infrastructure and assets within the communities at risk can be accomplished in several ways, including hand crews, mechanized equipment, grazing, herbicides and prescribed burns. Vegetation management projects are sometimes accomplished using a combination of these techniques.

Regardless of the techniques used, the nature of the vegetation in Ventura County assures that unlike the forests in northern areas, the chaparral prevalent here will quickly grow back. As a result, in addition to the treatments themselves, successful vegetation management projects include planning, oversight and ongoing maintenance.

Proper planning of vegetation management projects includes careful consideration of all environmental, cultural and historical preservation aspects. Each of these areas need to be addressed, and proper permits, approvals and permissions acquired before any work is done on the ground. This process is engaged on a project by project basis, taking into consideration the project's activities, geographic location and seasonal timeline.

7.2 Wildfire Safety Project Priorities

While any wildfire protection project is important, the realities of funding constraints require priorities to be established among types of projects. Given the information within this document that is specific to Ventura County, the types of projects that are determined to be of highest priority, in priority order, are:

- 1) Vegetation management projects where a potential wildfire threatens life, property, agricultural assets, critical infrastructure and/or emergency ingress/egress in and around the communities at risk and unincorporated areas of the county.
- 2) Vegetation management projects where a potential wildfire threatens watersheds, riparian areas or other sensitive ecosystems; or high-traffic recreation areas (see Figure 4: Recreational areas within Ventura County).
- 3) Wildfire Safety Education Programs that provide homeowners, farmers, ranchers and other community members with information on defensible space, fire-resistant landscaping, emergency procedures, home defense and related topics; and Planning or Preparedness Projects that improve citizen and/or firefighter safety in the event of a wildfire.

Specific projects planned, under way and at various stages of completion within Ventura County are described in Appendix C: Wildfire Safety Projects within Ventura County.

8 Reducing Structural Ignitions

8.1 Causes of Structural Ignition

Structures in or near a wildfire event can ignite for a number of reasons, including direct exposure to flame, radiant heat, and impact from falling trees that are burning. But the most significant cause of structural ignition, by both direct and indirect effect, is burning embers. In the high winds accompanying and often precipitated by wildfires, embers can be flung up to two miles in advance of the flame front. These embers can ignite grass, brush, landscaping and firewood piles, and can accumulate on wooden decks or under eaves. Without proper screening, they can also penetrate into the attic and ignite homes long after the firefight seems to be over.

8.2 Creating Ignition-Resistant Structures

A multi-faceted approach is recommended to effectively protect structures from ignition during a wildfire event. A combination of defensible space, fire-resistant materials¹², and fire-resistant structural design can greatly increase the odds of survival in a wildfire event.

Recommendations to improve structure survivability in a wildfire are:

- **Roofing materials**
The roofing materials must be resistant to the heat from burning embers – a Class A-rated roof, self-extinguishing if possible (this means that a burning ember will not burn through the roofing material and catch the wooden roof deck below it on fire). This is a key element of structural defense, without which the structure's risk increases dramatically.
- **Structural extensions and openings**
Awnings, decks and deck covers, patio covers, porches, eaves and open exterior stairways can provide a place where embers accumulate and ignite the extended structure, which can then ignite the main structure. Also improperly screened attic or crawlspace vents or soffits can allow embers to enter and ignite the structure. Chimneys, open windows or single-pane windows that break easily when stressed by the heat of a wildfire can also allow embers to enter.
- **Defensible space around the structure**
Defensible space, when properly done, eliminates many of the causes of structural ignition. Essentially, it is the trimming and/or removal of potential sources of fuel for fire near the structure, including flammable landscaping, firewood, propane

¹² CalFire has produced a helpful reference list vendors of home-construction products that comply with current California Building Code. To see it, go to the following URL – <http://osfm.fire.ca.gov/strucfireengineer/pdf/bml/wuiproducts.pdf>

tanks, trees or overhanging limbs, wooden fences, trellises or other easily ignitable wood structures or objects. It should be understood, that “bare ground” landscaping is not the objective here – rather, the landscape is carefully addressed to trim or remove “ladder fuels” that can carry fire from one shrub or tree to the next, and trees or shrubs that present direct risks due to their proximity to structures are trimmed or removed (with appropriate permits, if required).

- **Firefighting equipment access to the structure**

Roads, bridges and driveways leading to a structure must be adequate in width, overhead clearance and structural strength to accommodate firefighting equipment.

Education is an important aspect of creating ignition-resistant homes and structures within the communities at risk. An outreach program to homeowners, as well as educational and reference materials for contractors, builders and architects are recommended.

9 Plan Monitoring and Maintenance

As mentioned elsewhere in this document, vegetation maintenance and modification is a dynamic process. This CWPP is designed as a living document to be monitored, maintained and updated on a regular basis (annually, if not more frequently).

Due to funding constraints, the Ojai Valley Fire Safe Council is not able to commit to producing the next annual revision of this CWPP. In light of this, the Ventura County Fire Protection District has stepped up to this task. To submit suggestions, corrections or new projects to be added to the list, please contact:

Ventura County Fire Protection District
Craig Morgan, Fire Prevention Officer
165 Durley Ave.
Camarillo, CA 93010
Phone: (805) 389-9749

Appendix A

Weed abatement parcel maps for individual communities at risk

Figure 10: Properties receiving weed abatement notices in Camarillo

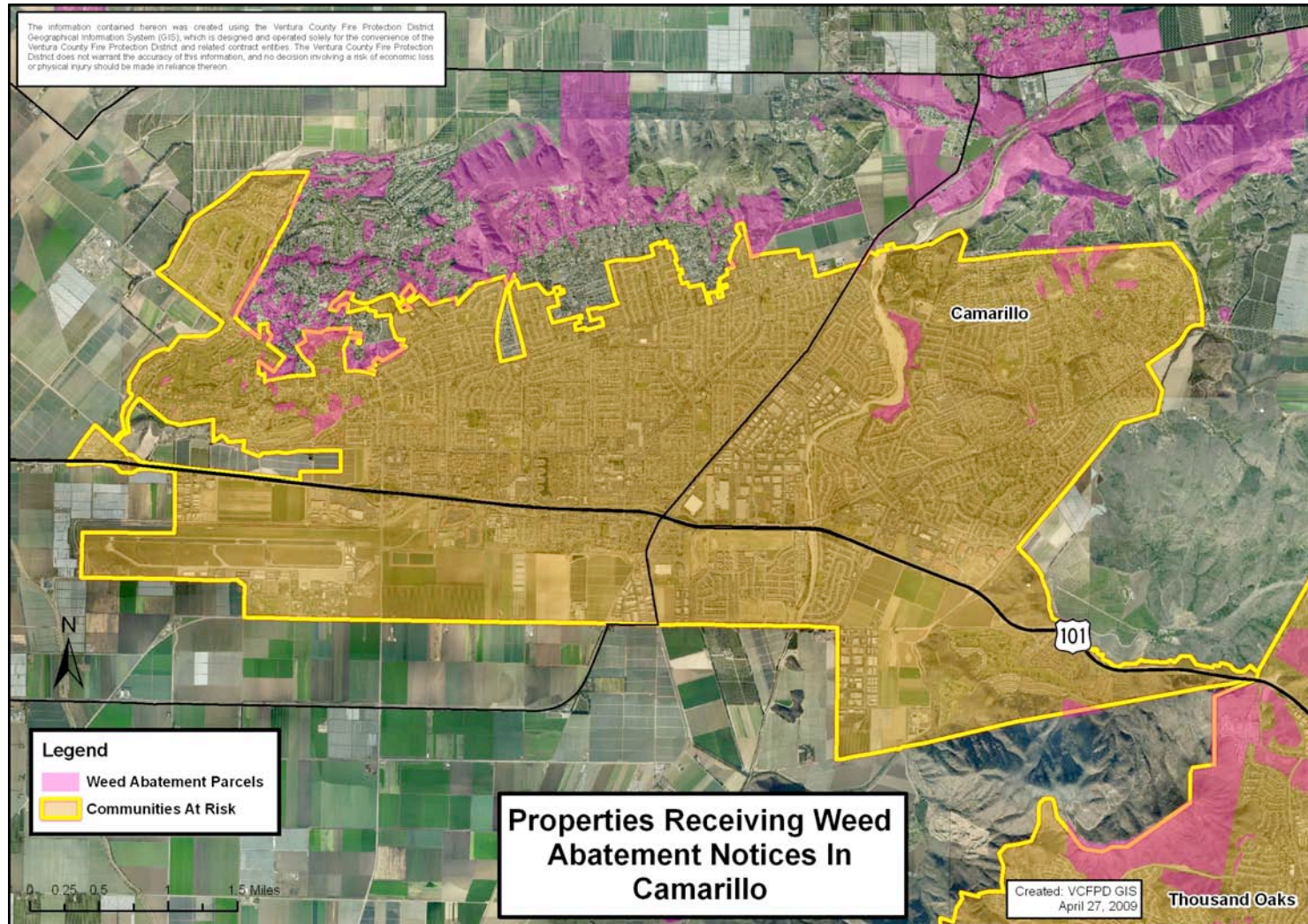


Figure 11: Properties receiving weed abatement notices in Casa Conejo

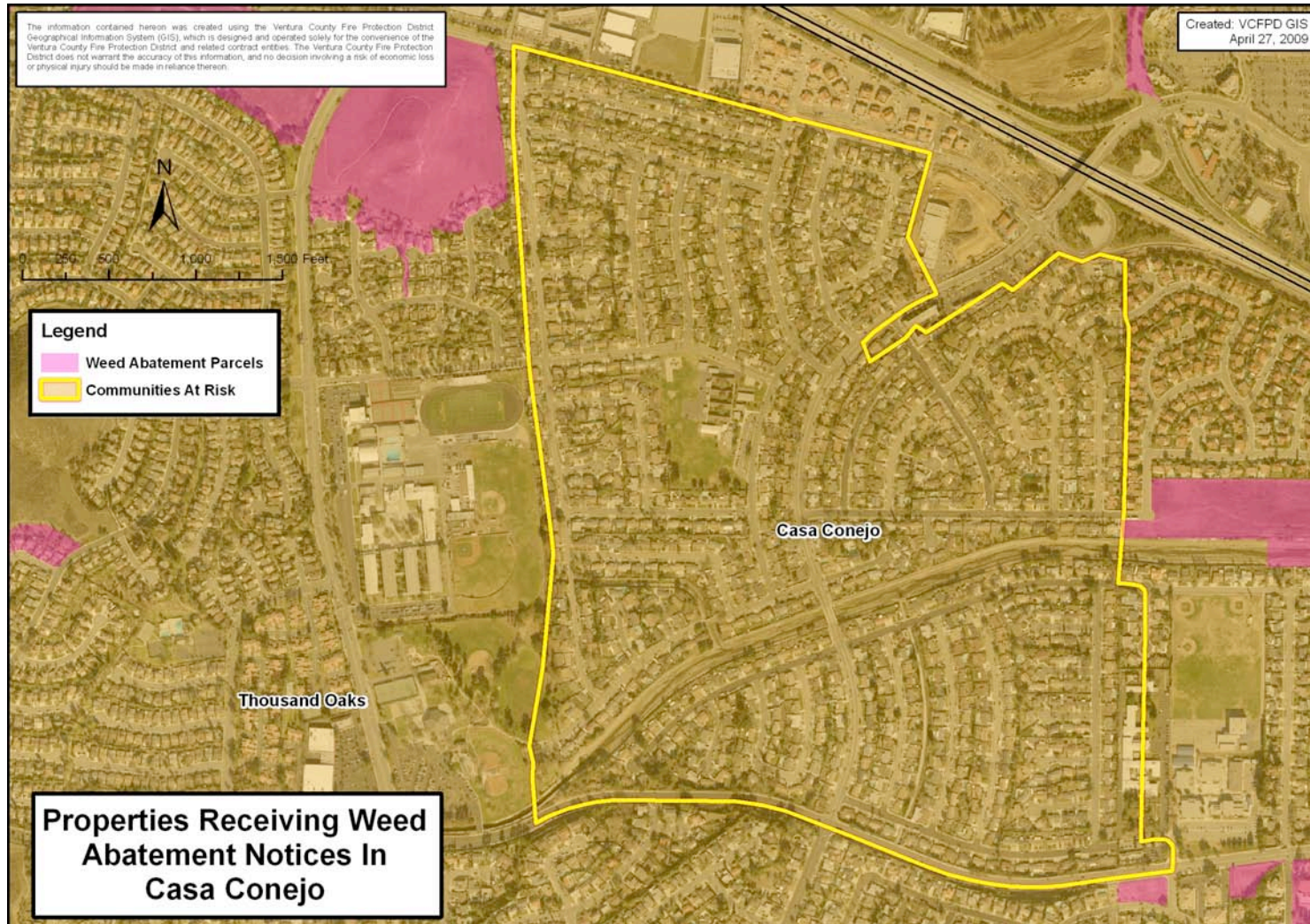


Figure 12: Properties receiving weed abatement notices in Fillmore

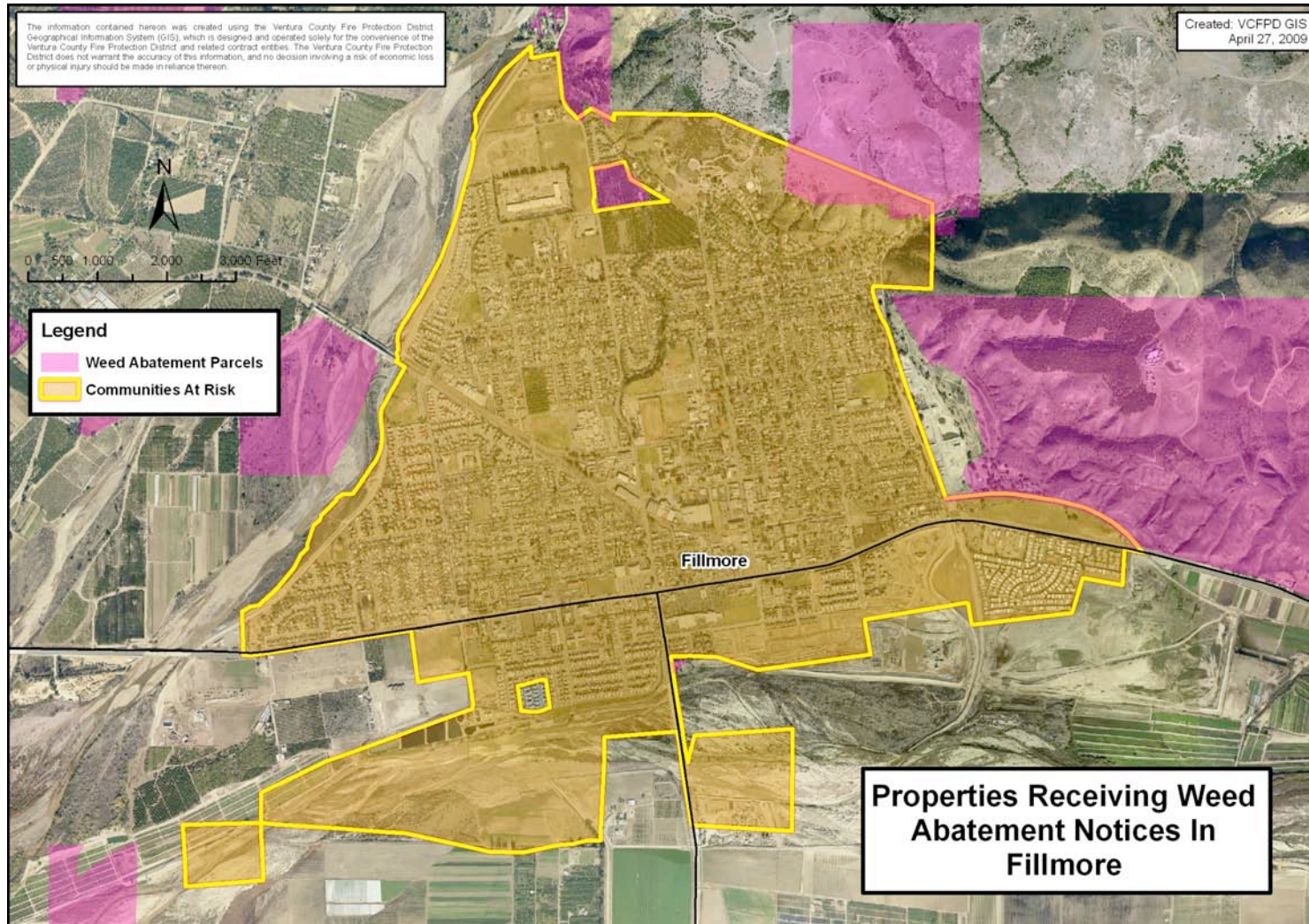


Figure 13: Properties receiving weed abatement notices in Meiners Oaks

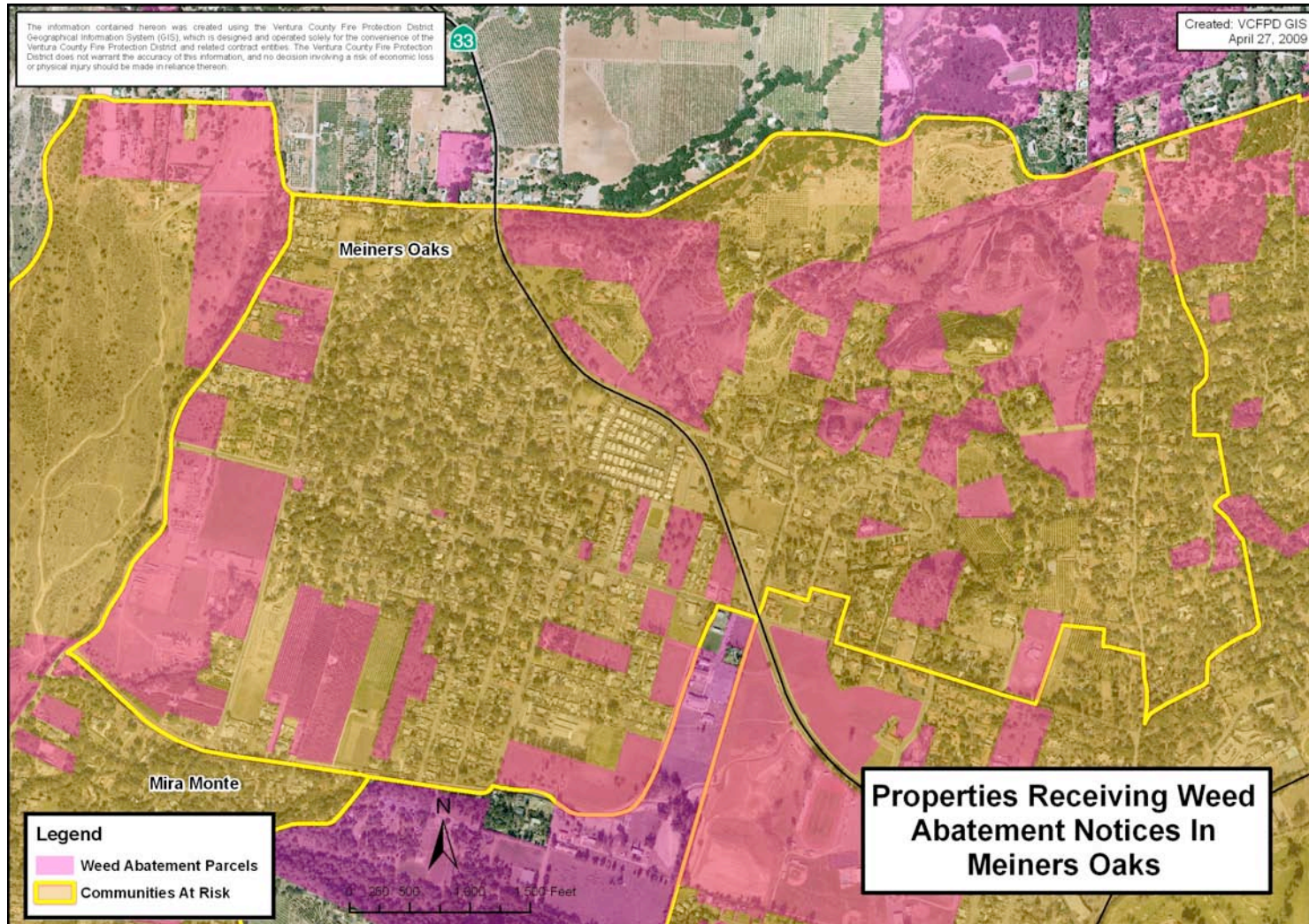


Figure 14: Properties receiving weed abatement notices in Mira Monte

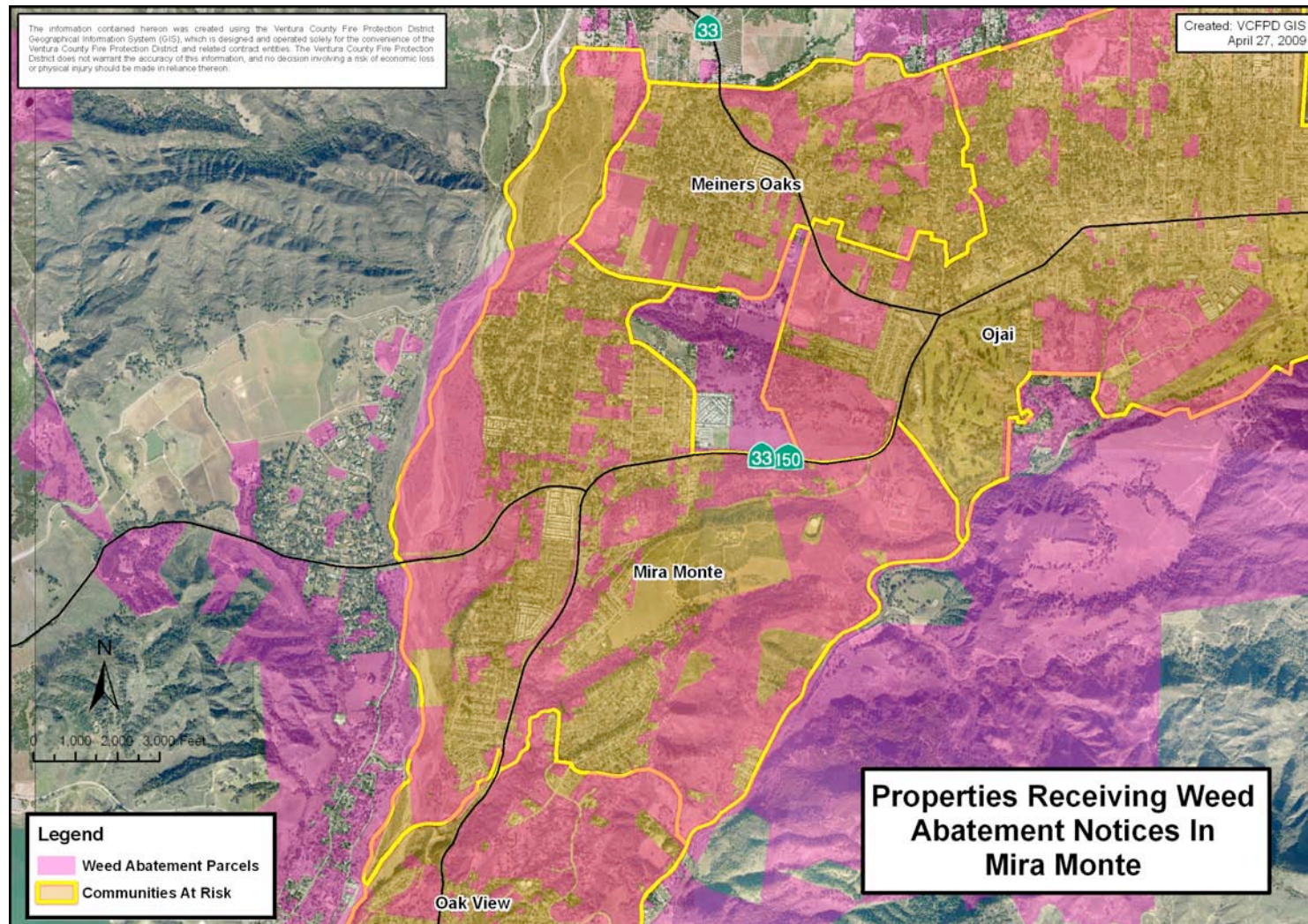


Figure 15: Properties receiving weed abatement notices in Moorpark

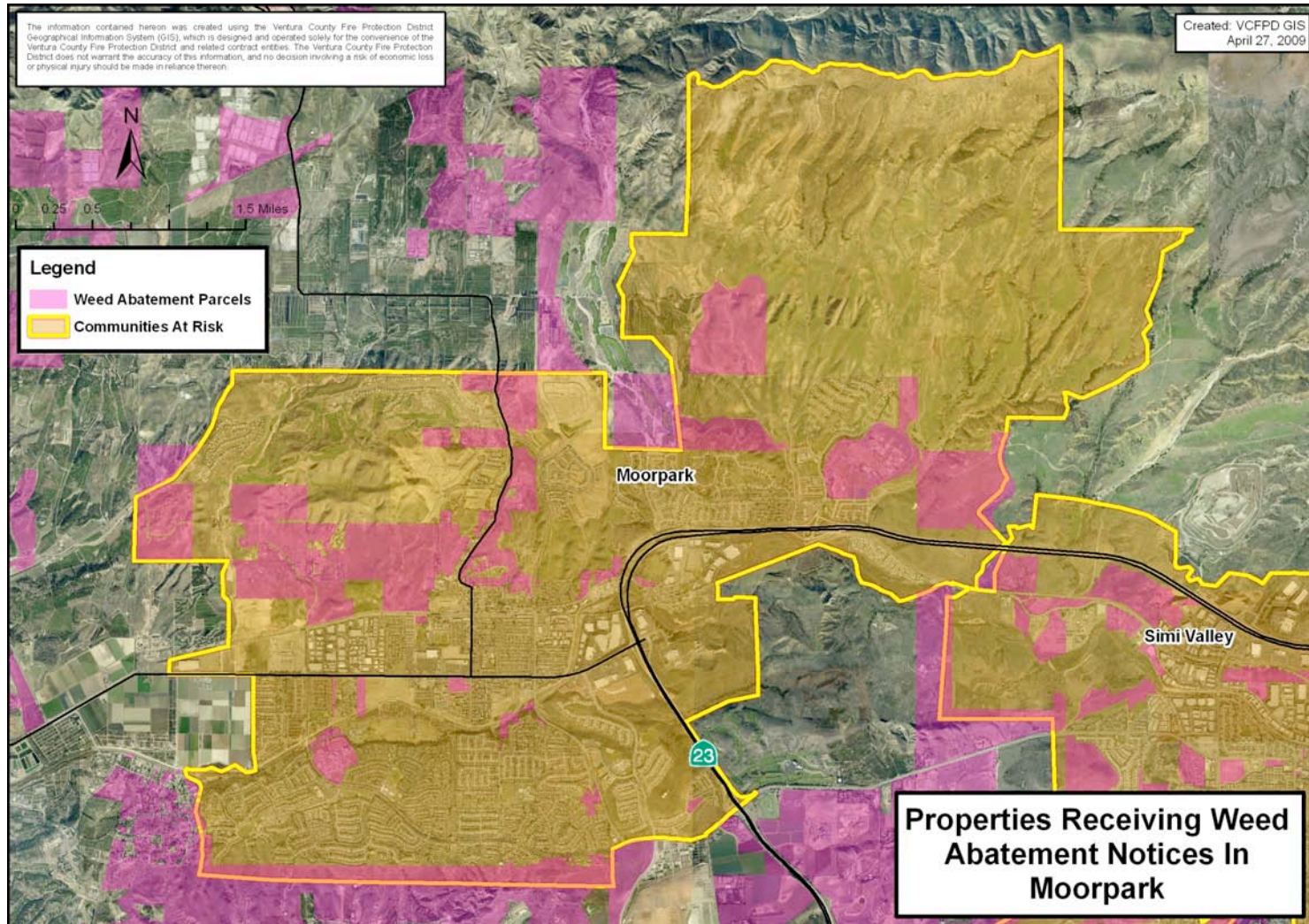


Figure 16: Properties receiving weed abatement notices in Oak Park

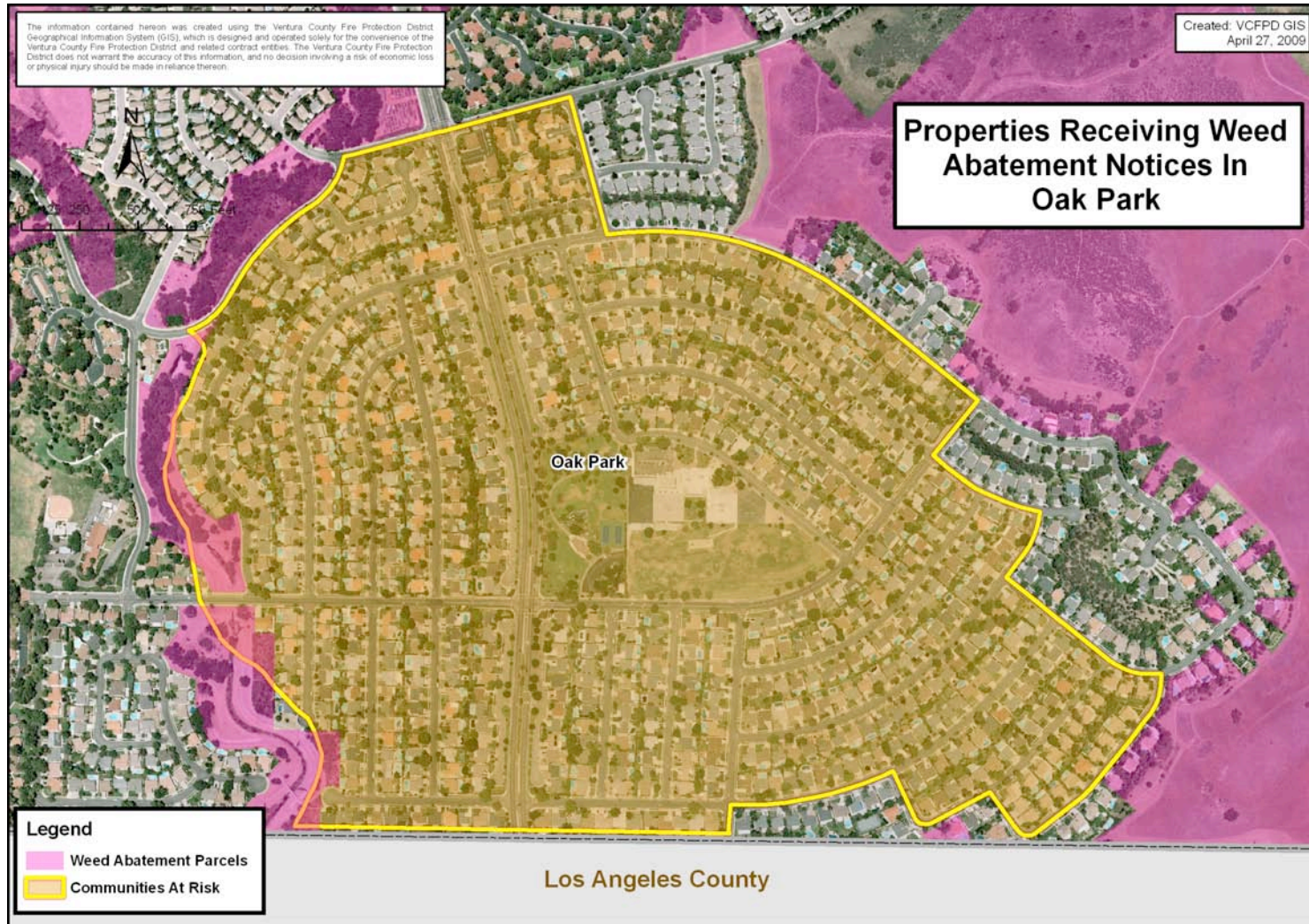


Figure 17: Properties receiving weed abatement notices in Oak View

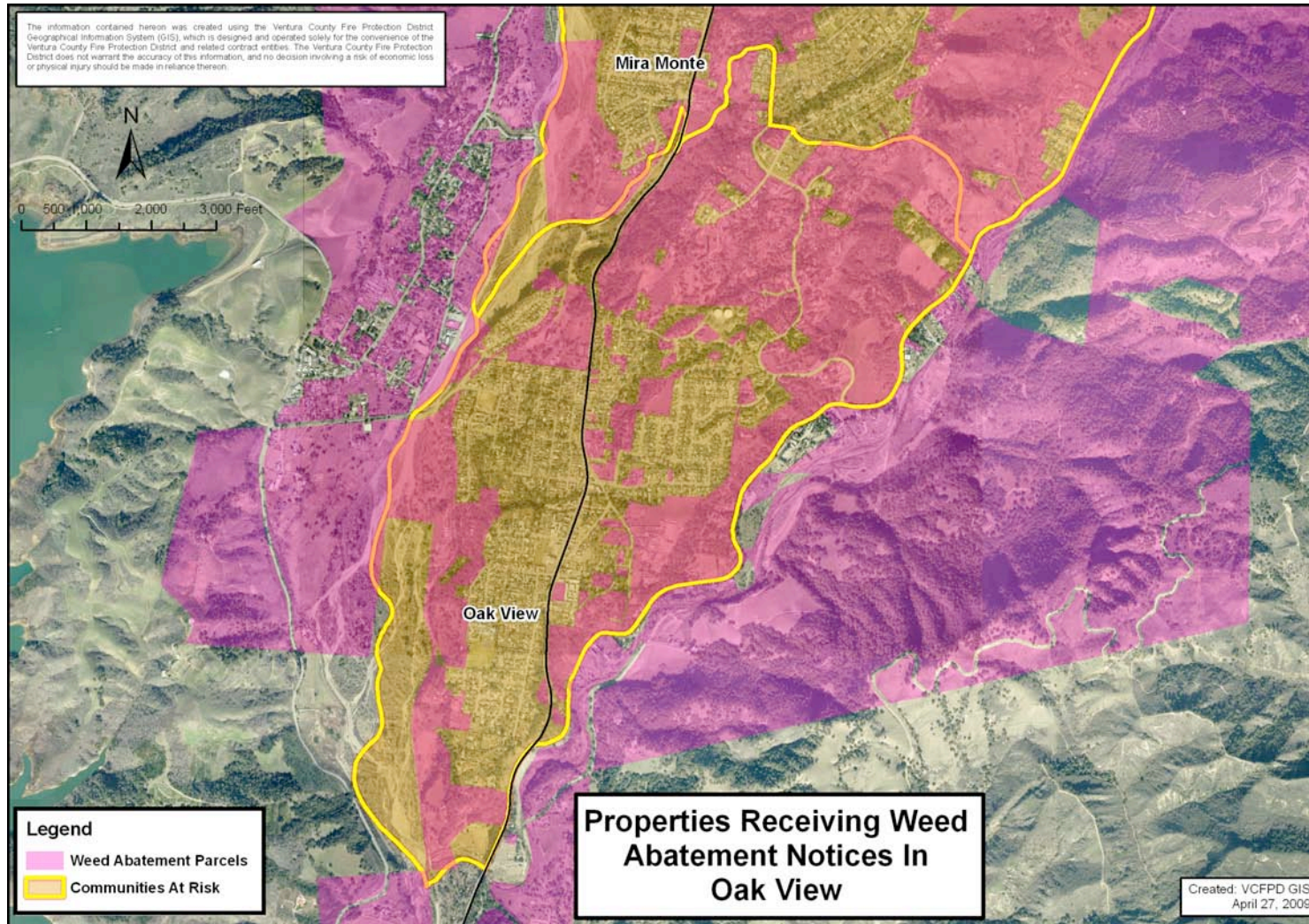


Figure 18: Properties receiving weed abatement notices in Ojai

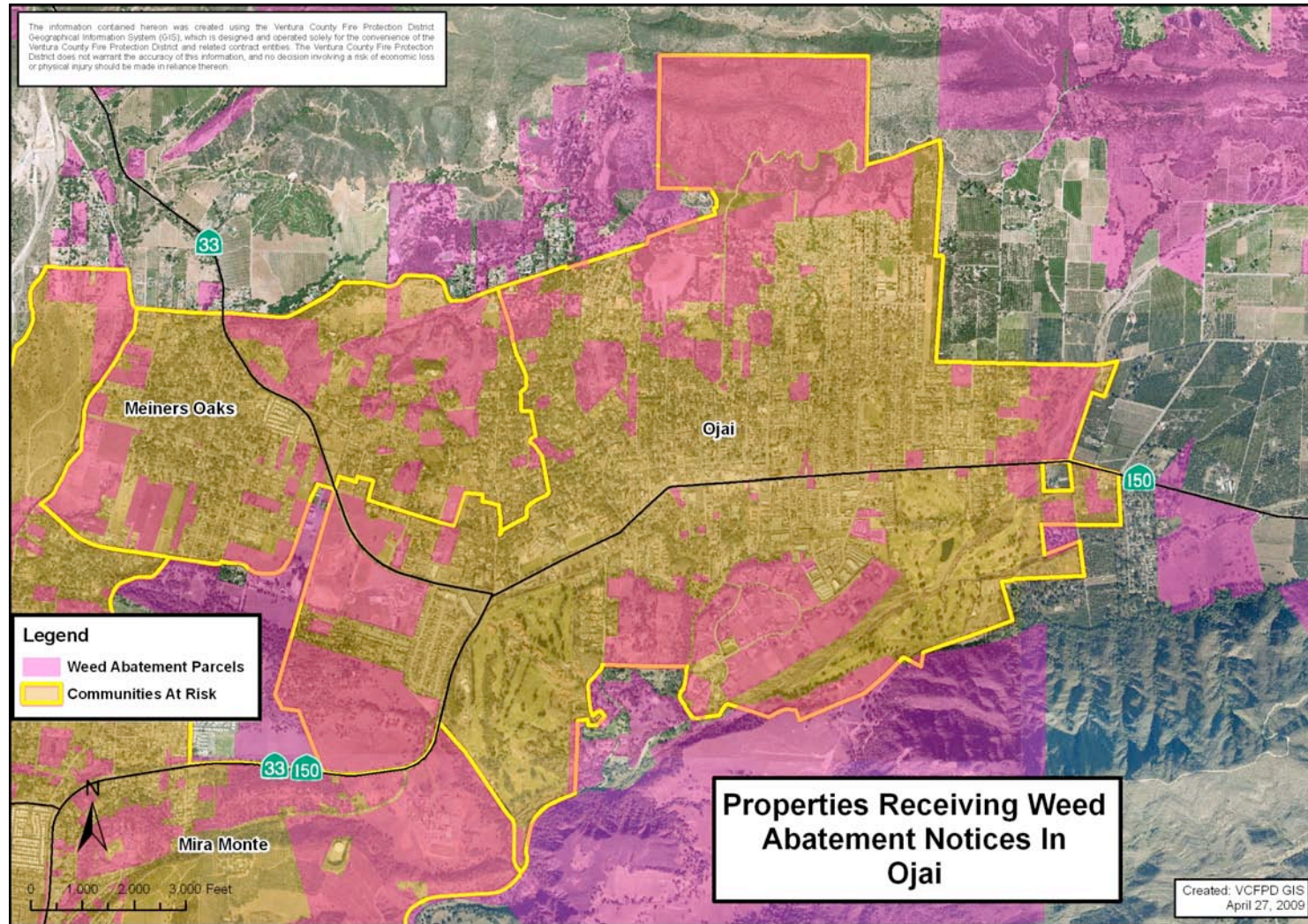


Figure 19: Properties receiving weed abatement notices in Piru

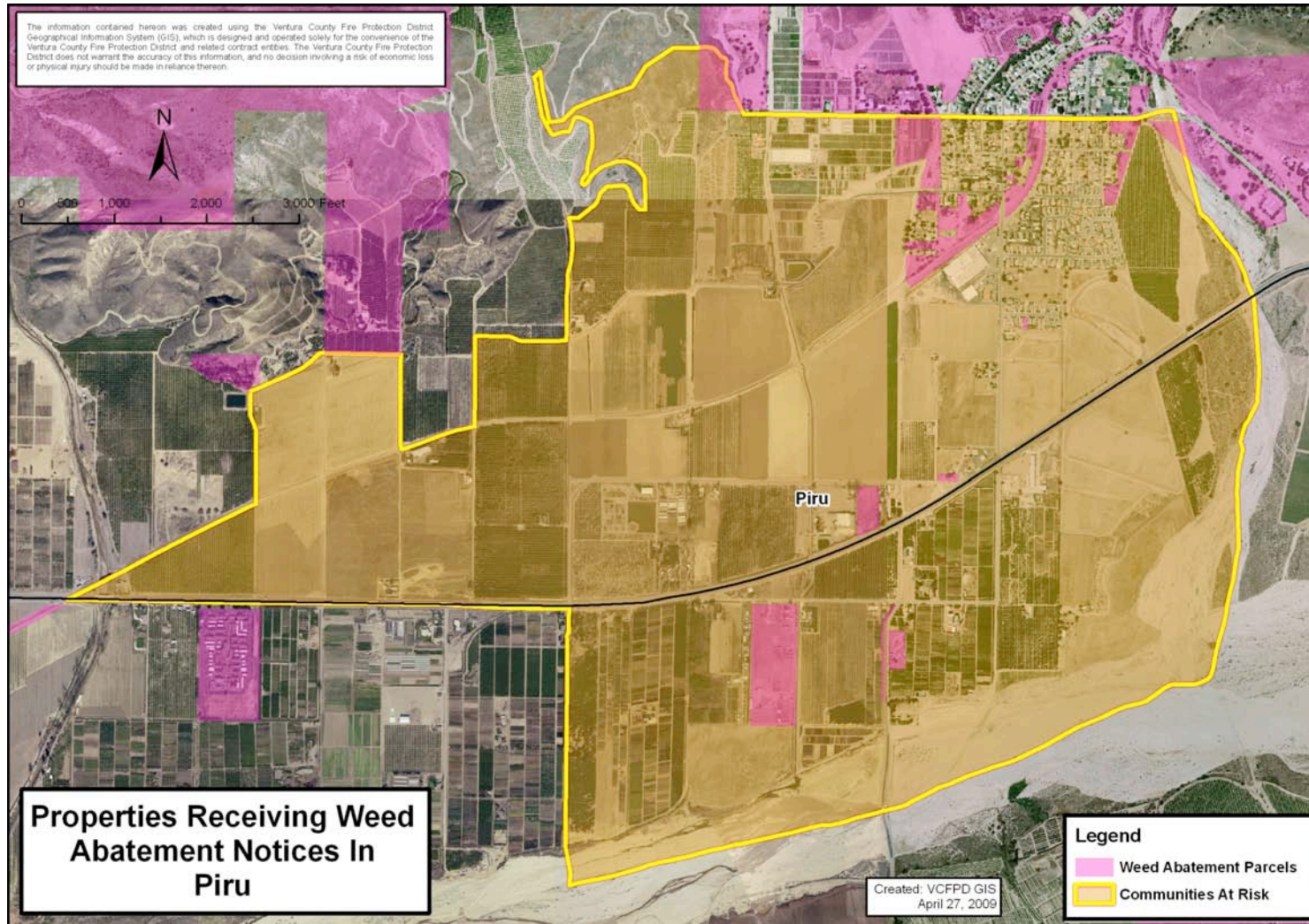


Figure 20: Properties receiving weed abatement notices in Santa Paula

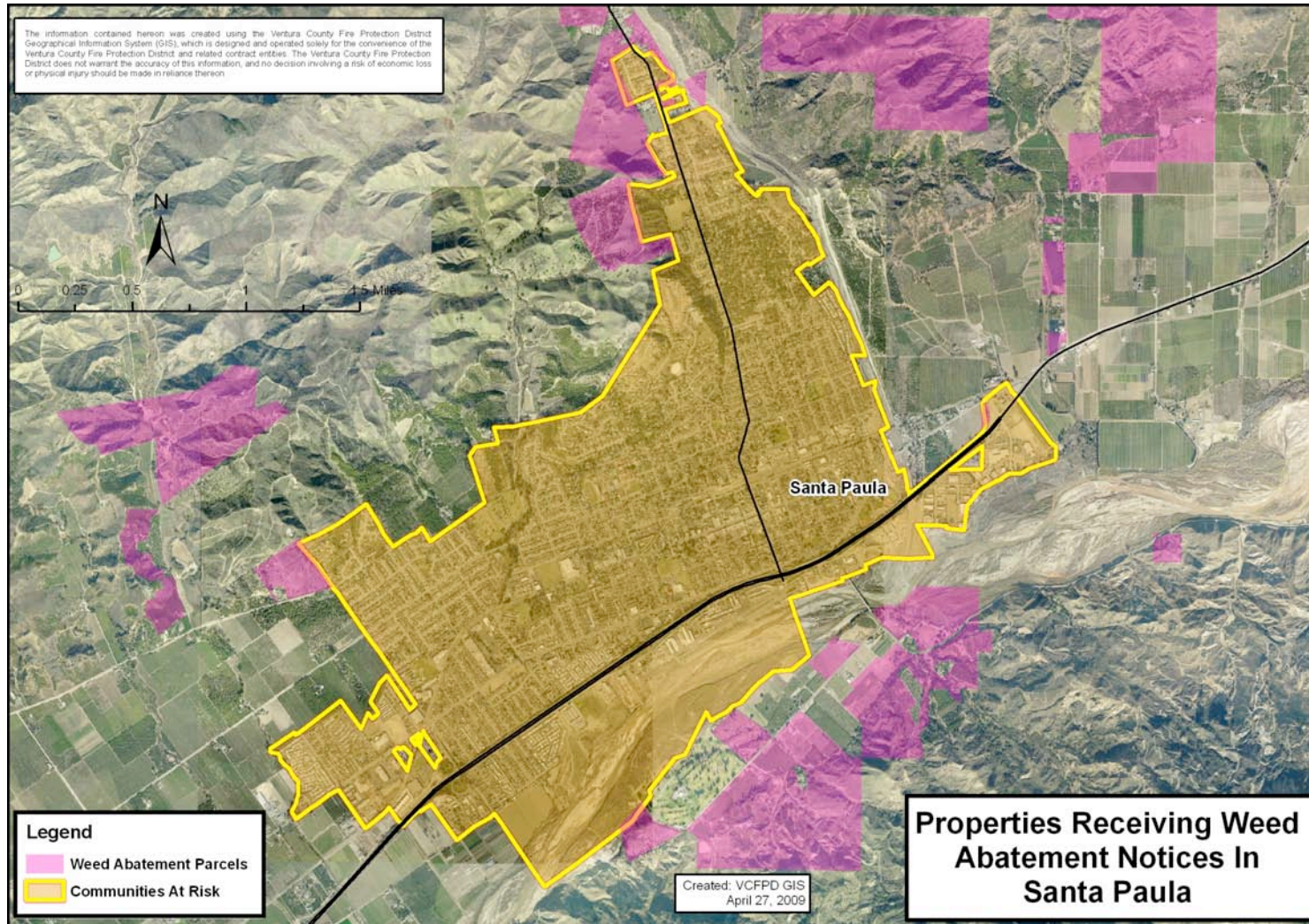


Figure 21: Properties receiving weed abatement notices in Simi Valley

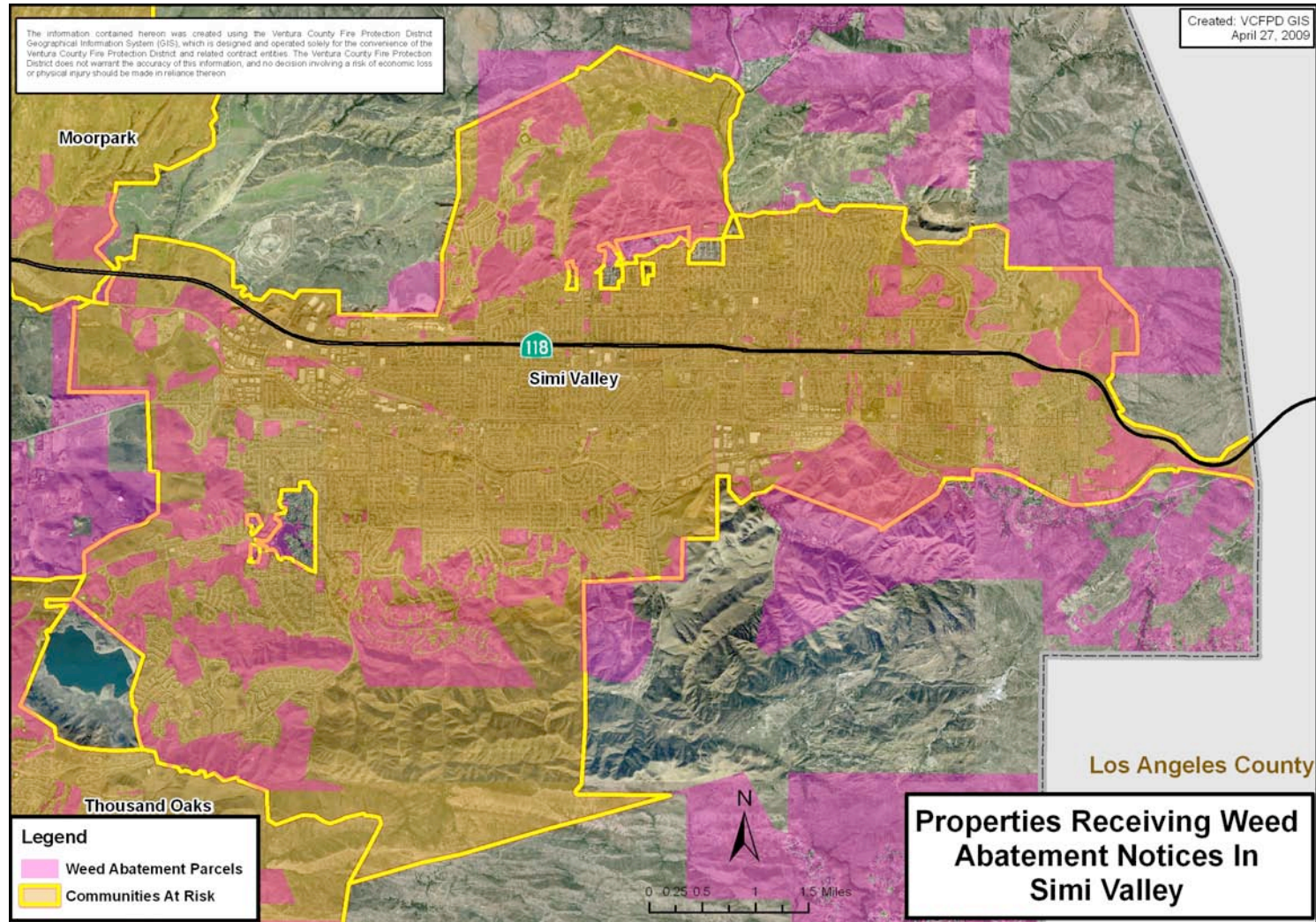


Figure 22: Properties receiving weed abatement notices in Thousand Oaks

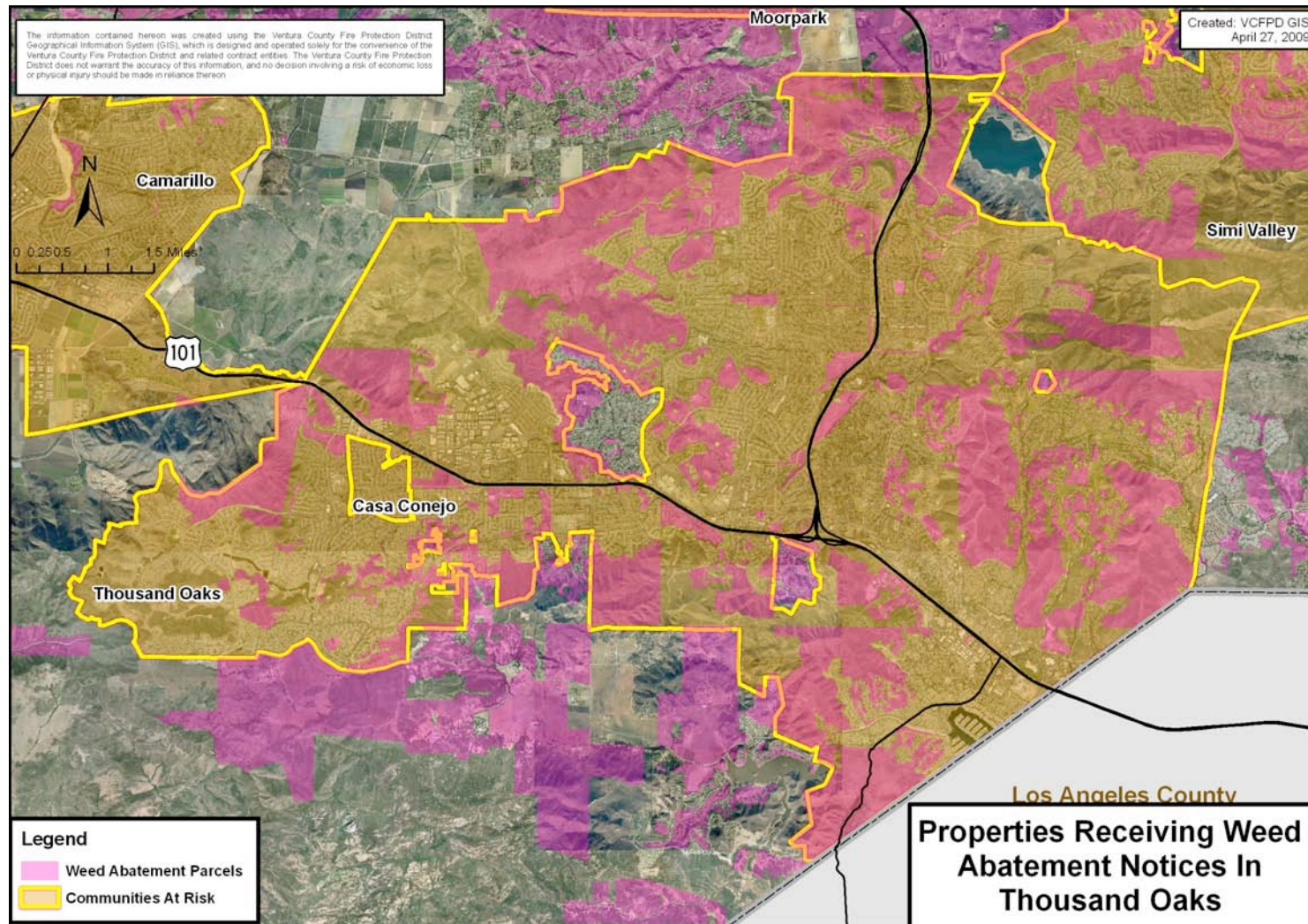
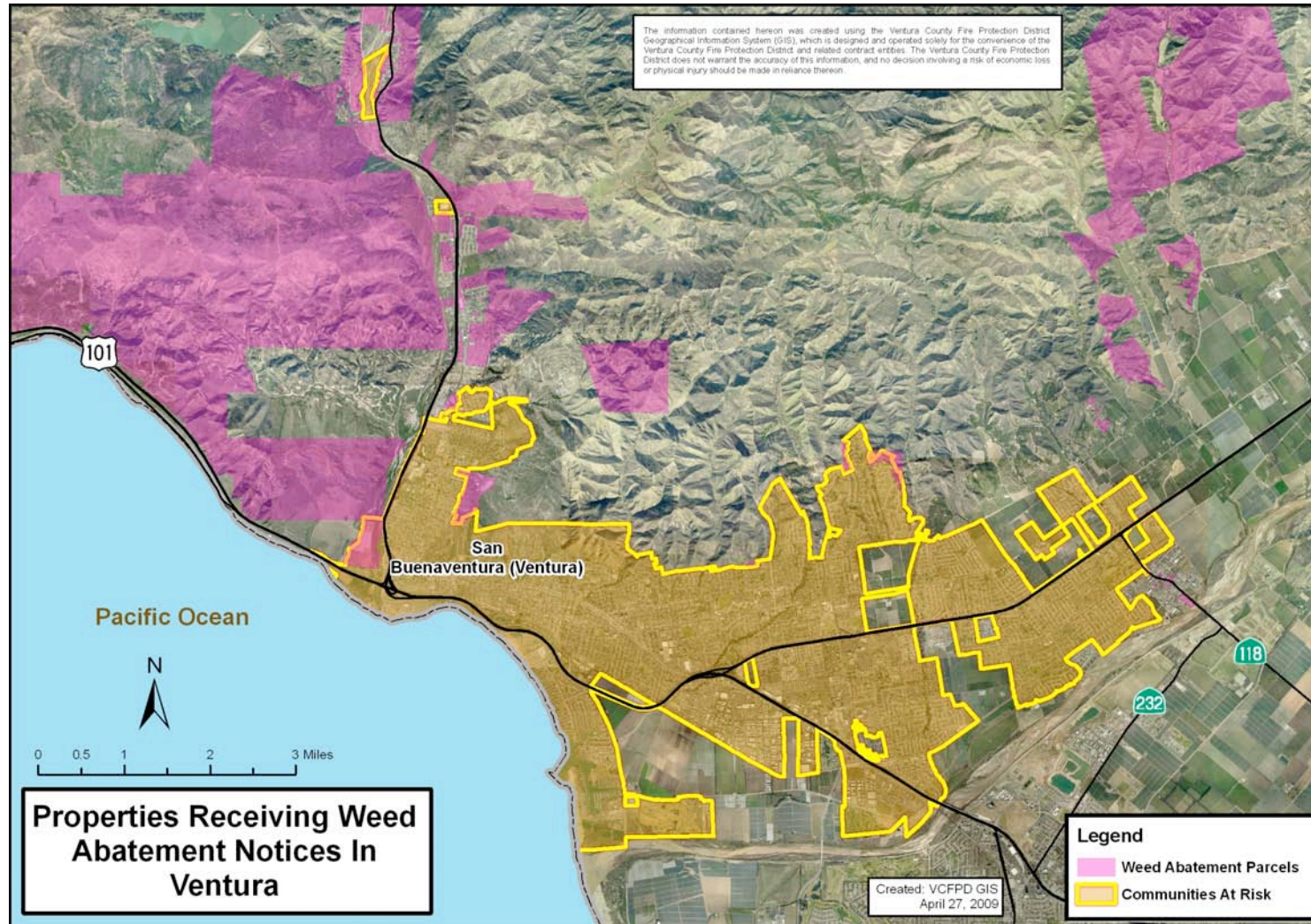


Figure 23: Properties receiving weed abatement notices in Ventura



Appendix B
Communities At Risk - Assets

Figure 24: Communities At Risk - Assets: Camarillo

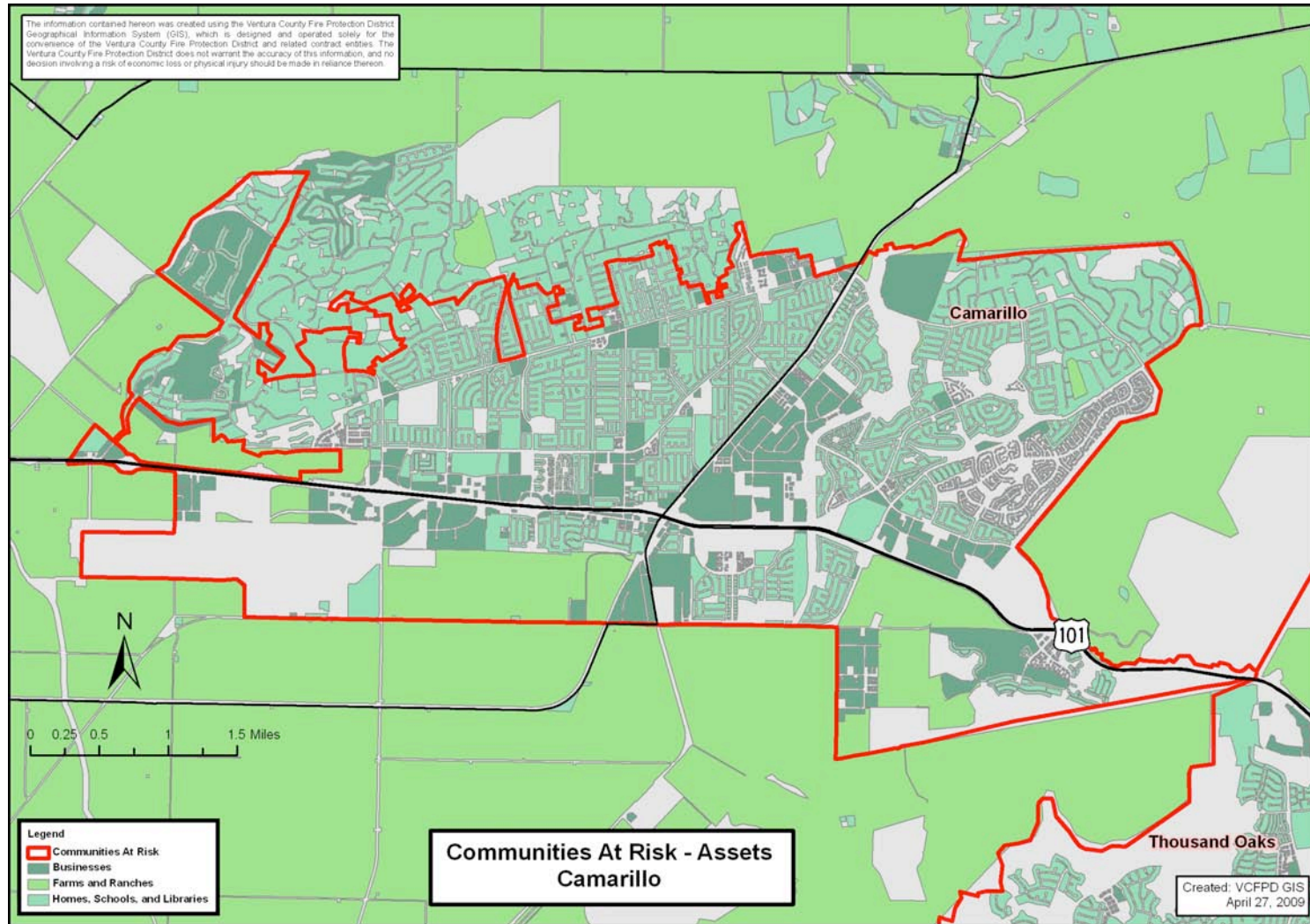


Figure 25: Communities At Risk - Assets: Casa Conejo



Figure 26: Communities At Risk - Assets: Fillmore

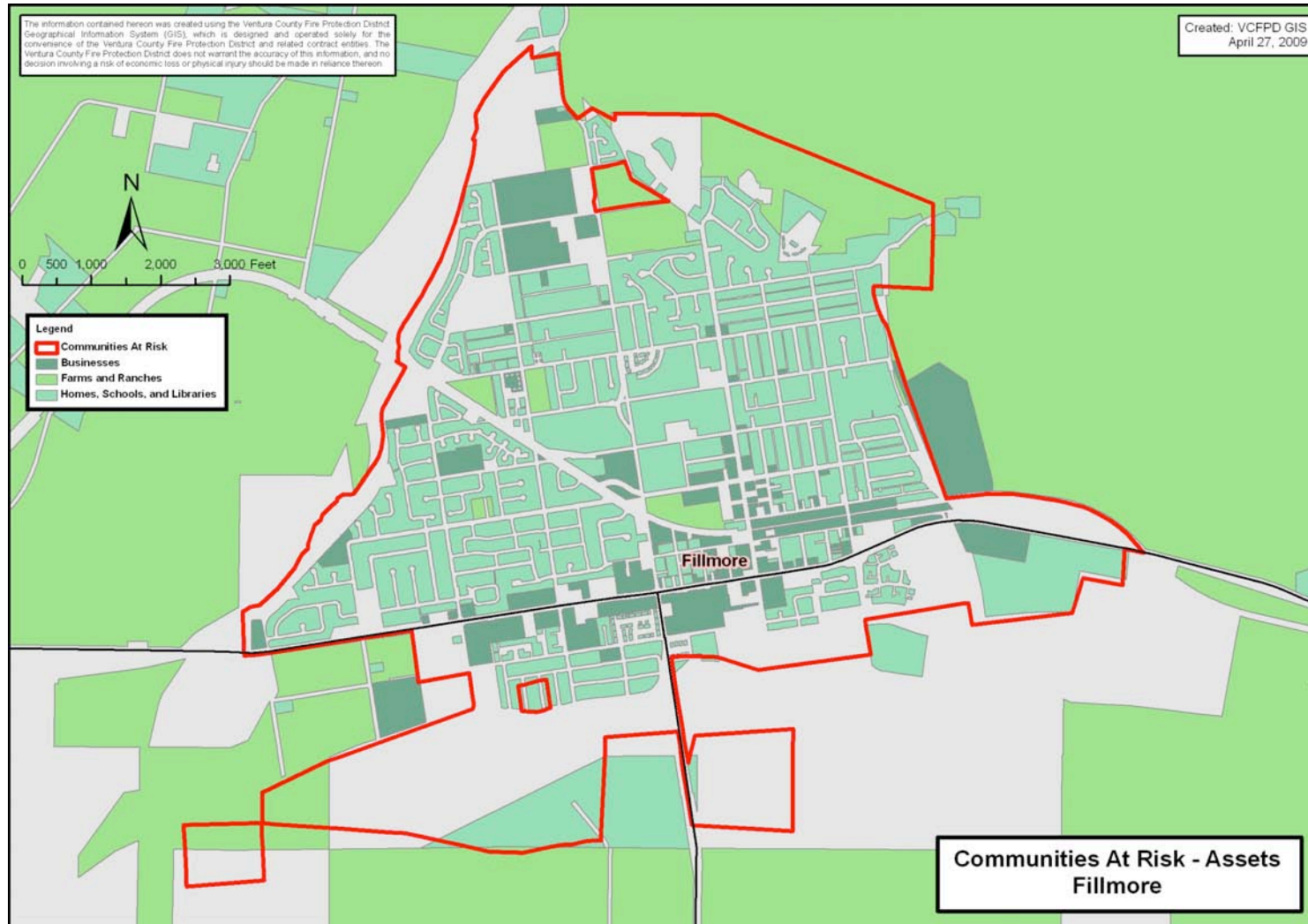


Figure 27: Communities At Risk - Assets: Meiners Oaks

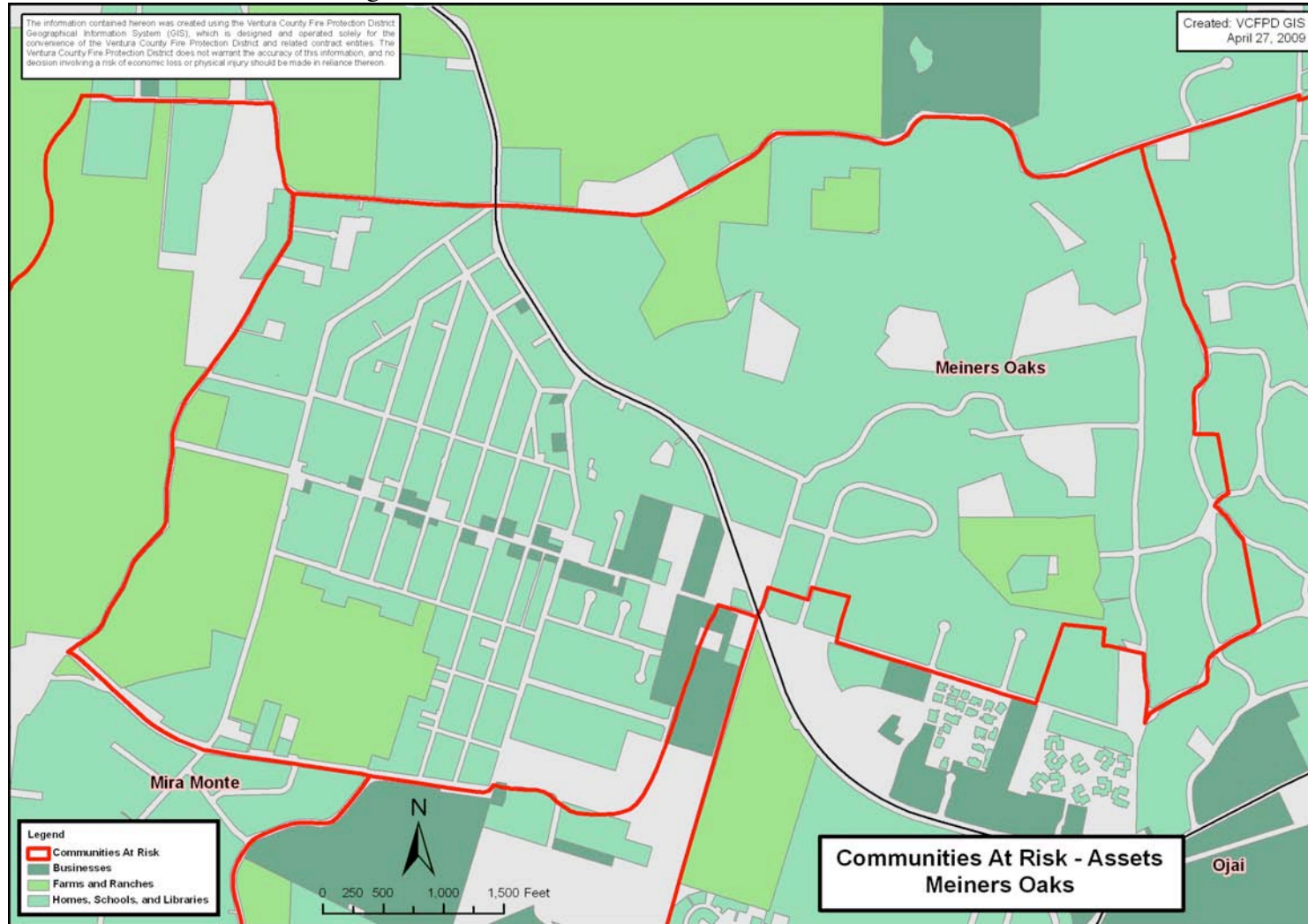


Figure 28: Communities At Risk - Assets: Mira Monte

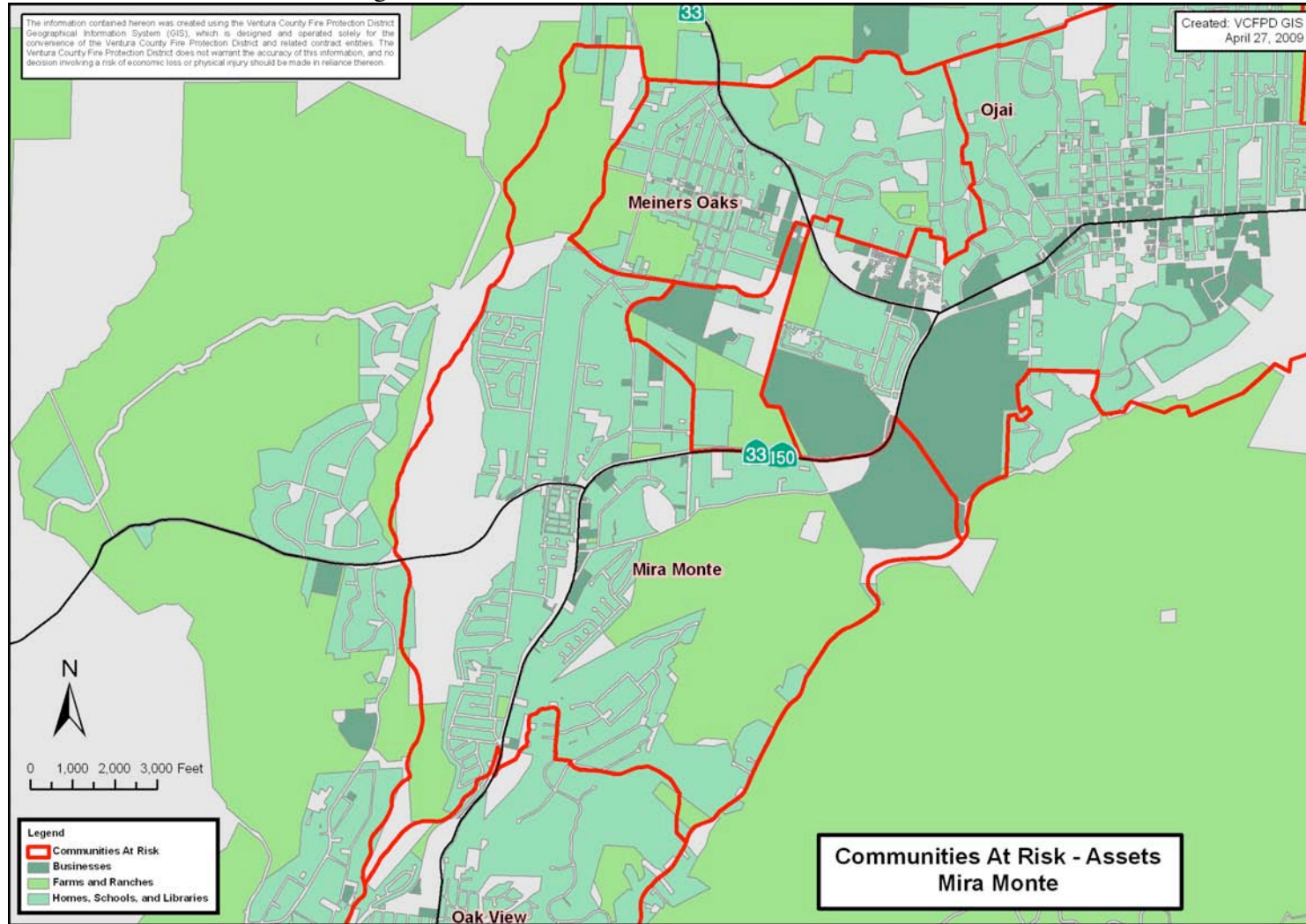


Figure 29: Communities At Risk - Assets: Moorpark

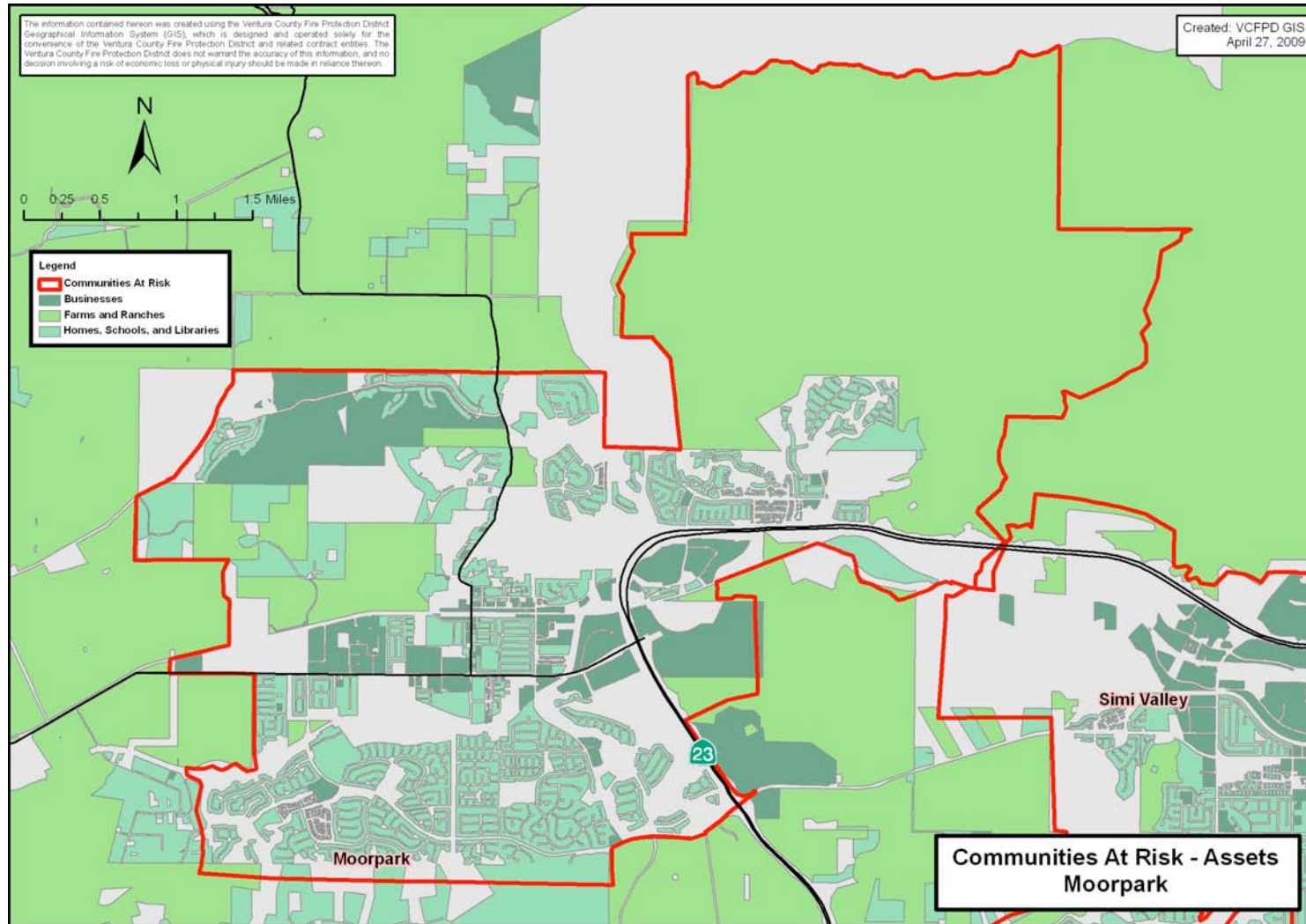


Figure 30: Communities At Risk - Assets: Oak Park



Figure 31: Communities At Risk - Assets: Oak View

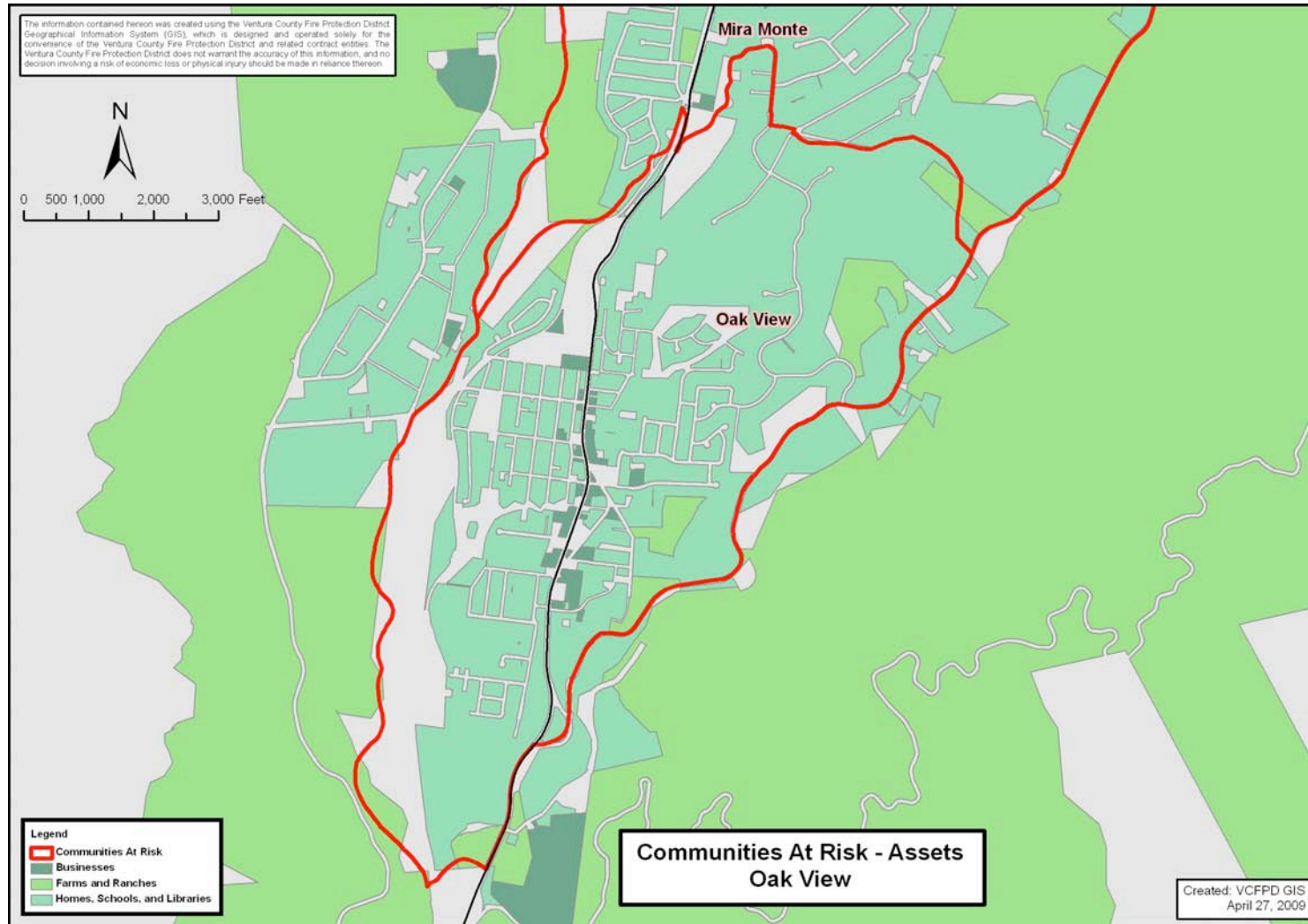


Figure 32: Communities At Risk - Assets: Ojai

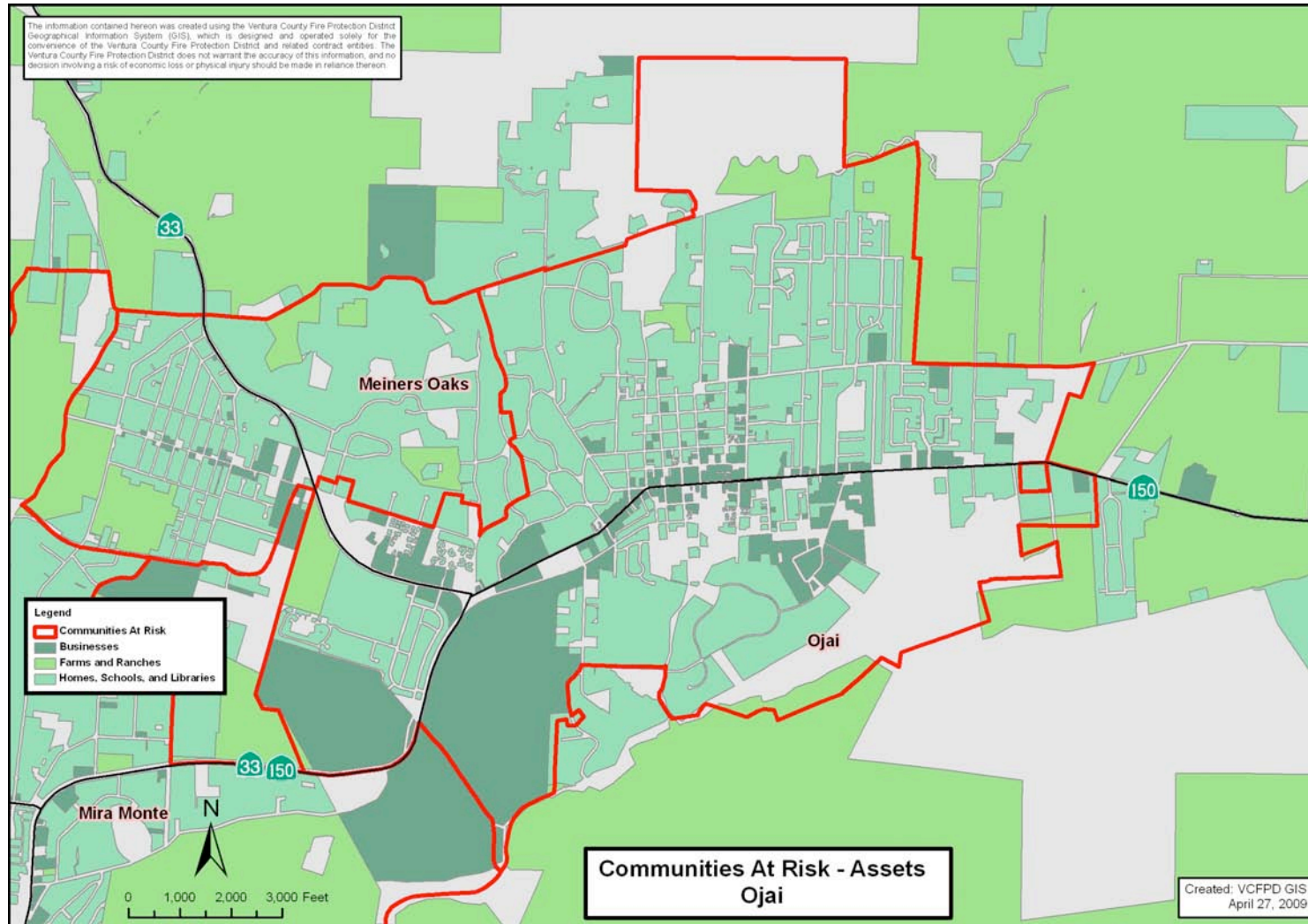


Figure 33: Communities At Risk - Assets: Piru

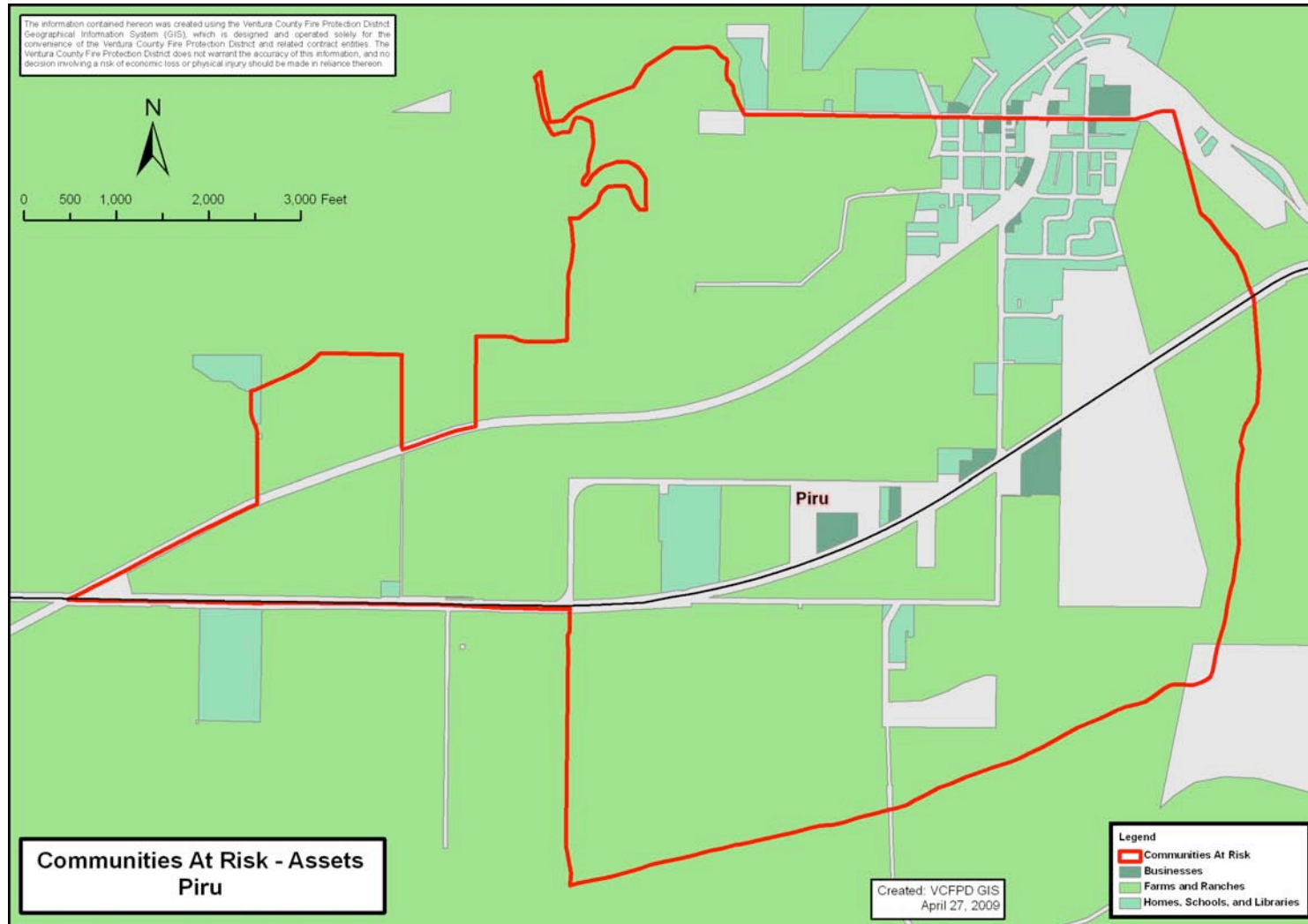


Figure 34: Communities At Risk - Assets: Santa Paula

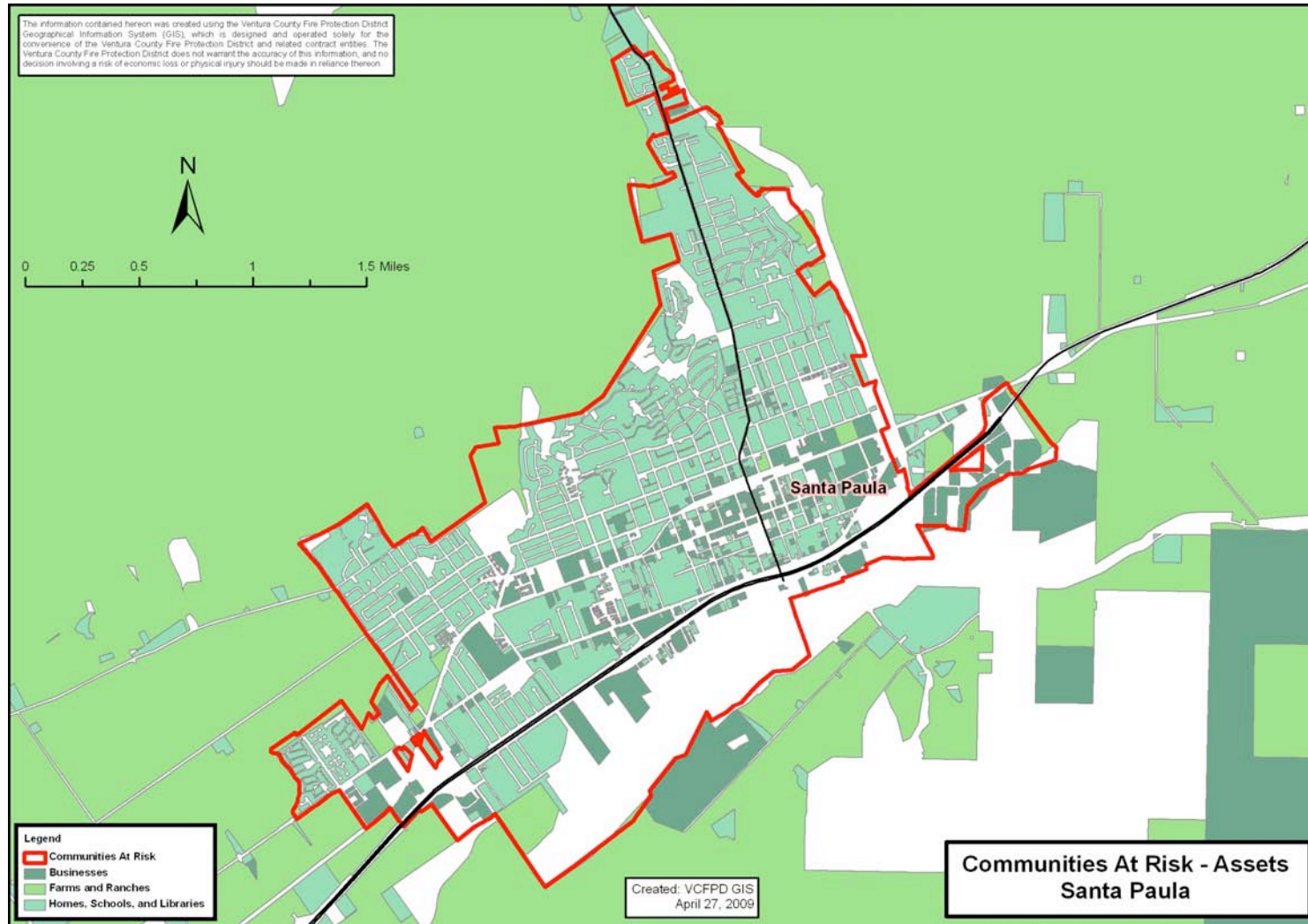


Figure 35: Communities At Risk - Assets: Simi Valley

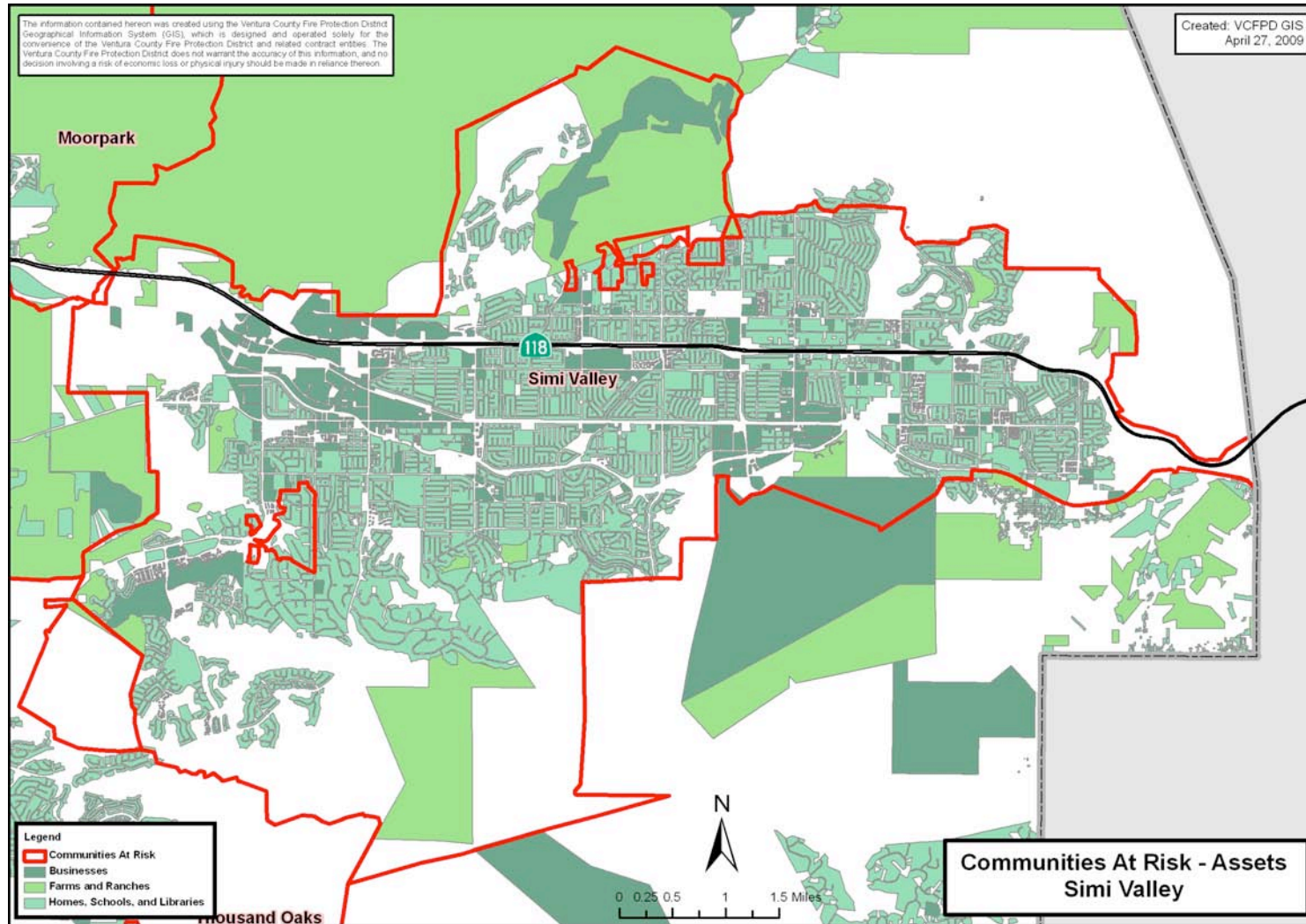


Figure 36: Communities At Risk - Assets: Thousand Oaks

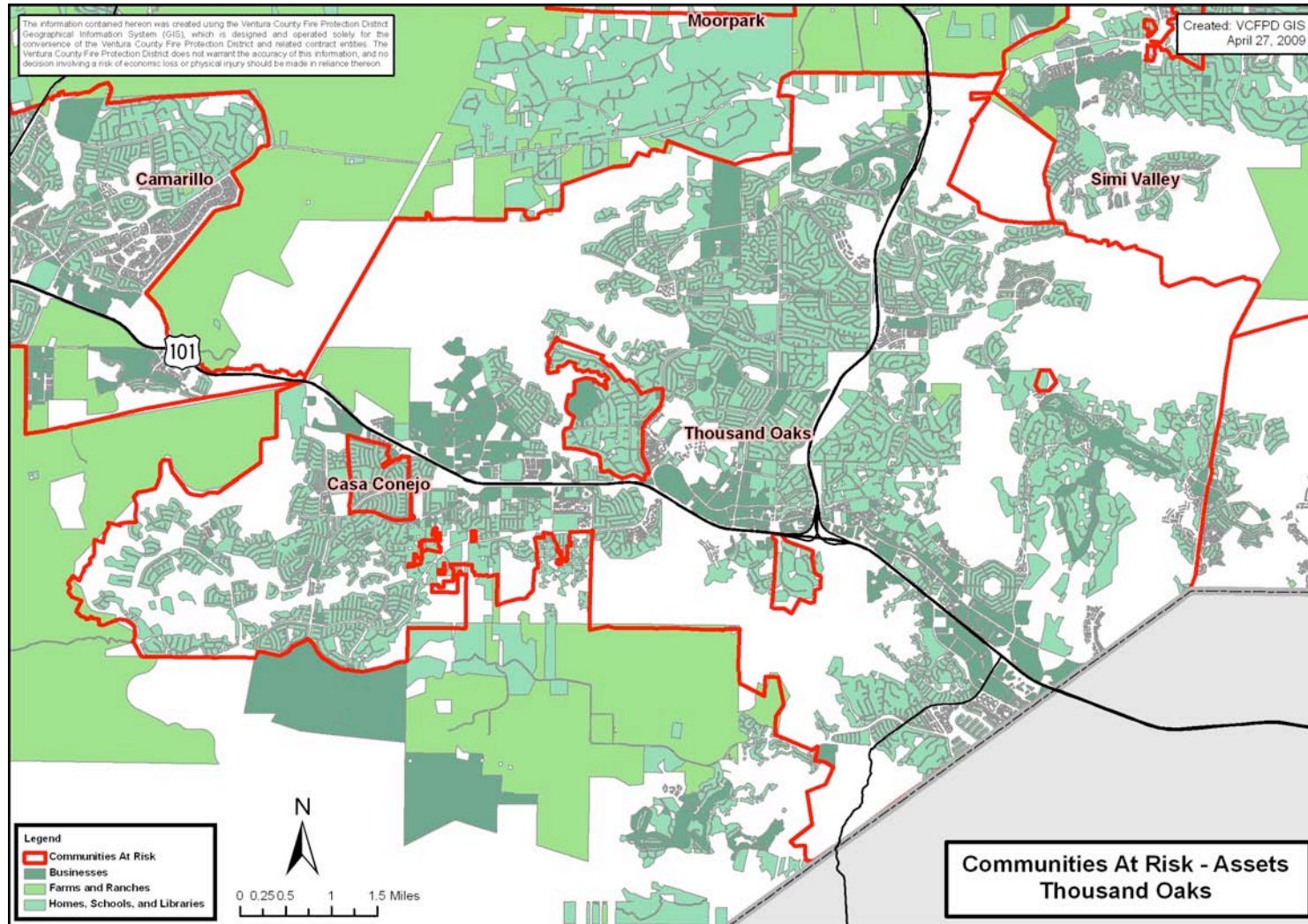
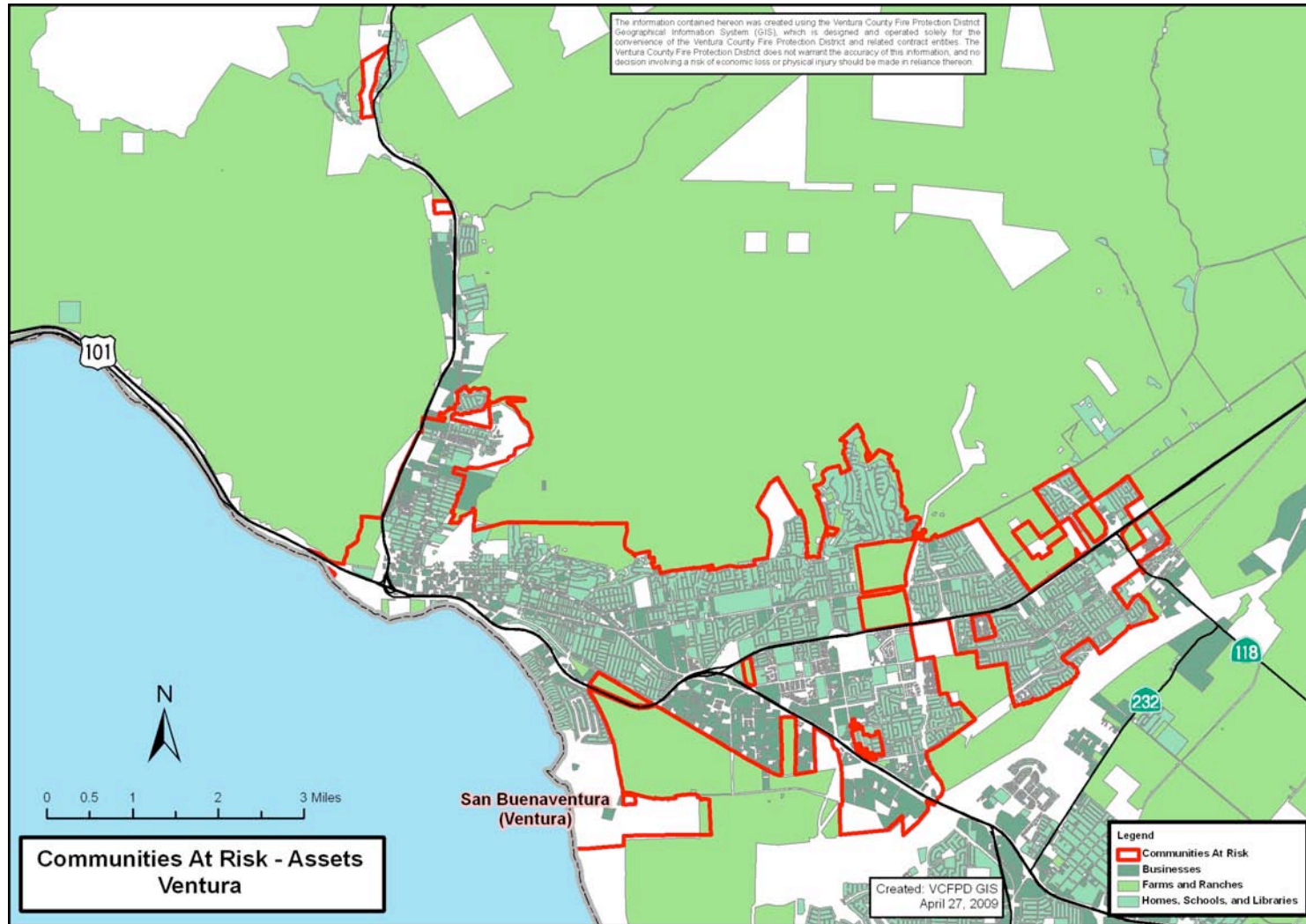


Figure 37: Communities At Risk - Assets: Ventura



Appendix C

Wildfire Safety Projects within Ventura County

Wildfire Safety Projects within Ventura County

Project	Description	Priority Rating*	Status	Community at Risk	Agency/Contact
Annual Fire Mitigation for Large Properties	Fire mitigation for Thacher School, Clark Ranch and Canada Larga Ranch.	1	Under way	Meiners Oaks, Oak View, Ojai, Mira Monte	C.R.E.W., Wally McCall, (805) 649-8847, wmrccall@sbcglobal.net
Casitas Open Space Project	Remove non-native plants including almond orchards and eucalyptus in Santa Ana Road area of Ojai Valley.	1	Funded, under way	Meiners Oaks, Oak View, Ojai, Mira Monte	C.R.E.W., Wally McCall, (805) 649-8847, wmrccall@sbcglobal.net
City of Ojai Last Defense Fuel Break Extension	Extension/enhancement of the City of Ojai Last Defense Fuel Break that was completed in Nov 2008 – 4.5 miles of Strategic Fuel Break in Ojai, protecting from wildfire approaching from the north and east	1	Approved, awaiting funding	Meiners Oaks, Oak View, Ojai, Mira Monte	Ojai Valley Fire Safe Council, Will Castagna, Grants Manager, will@firesafeojai.org 805-646-7307
KFA Project	Oak Woodland Restoration	1	Under Way	Meiners Oaks, Oak View, Ojai, Mira Monte	Ventura County Fire Protection District 2471 Latigo Avenue Oxnard CA 93030 (from VCFPD Prefire Management Plan VI)
Matilija Canyon Evacuation Route Cleanup	Improve safety of citizens and firefighters during a wildfire event by conducting much-needed vegetation management along the only roadway in and out of the canyon	1	Idea Stage	Meiners Oaks, Oak View, Ojai, Mira Monte	Ojai Valley Fire Safe Council, Will Castagna, Grants Manager, will@firesafeojai.org 805-646-7307
Ojai Honor Farm Fire Mitigation	Vegetation management on the 164 acre Honor Farm property leased from Ventura County (Help of Ojai project, subcontracted to C.R.E.W.).	1	Under way	Meiners Oaks, Oak View, Ojai, Mira Monte	C.R.E.W., Wally McCall, (805) 649-8847, wmrccall@sbcglobal.net
Ojai Senior Citizen Fire Mitigation Project	Residential Fire Mitigation for estimated 600 senior and disabled citizen households.	1	Funded, Cultural and Environmental Compliance completed.	Meiners Oaks, Oak View, Ojai, Mira Monte	C.R.E.W., Wally McCall, (805) 649-8847, wmrccall@sbcglobal.net

Project	Description	Priority Rating*	Status	Community at Risk	Agency/Contact
Sissar Road Project	The vegetation management area will be located north of Ojai Santa Paula Road, south of Nordoff Ridge Road, east of Horn Canyon and west of Bear Canyon. This area provides protection to the at risk assets in east and northeast wind driven fires. This project was completed in 2007 and is being maintained as needed to reduce structure threat.	1	Maintenance	Meiners Oaks, Oak View, Ojai, Mira Monte	Ventura County Fire Protection District 2471 Latigo Avenue Oxnard CA 93030 (from VCFPD Prefire Management Plan VI)
Fillmore Front Project	This federally funded grant project is located in the Piru and Fillmore fuel beds. The project consists of the following components: 1) vegetation management to protect agricultural assets, 2) increase defensible space surrounding the Hopper Mountain Condor Refuge, 3) wildfire preparation and training for the Hopper Mountain Condor Refuge, city of Fillmore, and town of Piru, 4) fire road and fuel break maintenance. A CEQA negative declaration was prepared for this project along with NEPA documentation for the Hopper Mountain Condor Refuge.	1	Completed, Maintenance	Piru, Fillmore	Ventura County Fire Protection District 2471 Latigo Avenue Oxnard CA 93030 (from VCFPD Prefire Management Plan VI)
Reagan Library	Maintain the existing fuel break that surrounds the library, through the use of hand cutting, broadcast chipping and brush mowing.	1	Maintenance	Simi Valley	Ventura County Fire Protection District 2471 Latigo Avenue Oxnard CA 93030 (from VCFPD Prefire Management Plan VI)
Evacuation and Response Ingress and Egress Enhancements	Fire Safe Council and property owner assistance for emergency route vegetation management, right-of-way improvements, and red-flag day parking control. Further assistance for promotion of community evacuation	1	Planning	Thousand Oaks	Bill Pratt, President, Ventu Park Fire Safe Council, 141 Hope Road, Newbury Park, CA 91320, (805) 384-2748 x203, wpratt2057@aol.com

Project	Description	Priority Rating*	Status	Community at Risk	Agency/Contact
	procedure. Further assistance for mitigation of emergency route traffic “pinch points”.				
San Buenaventura Project	This vegetation management project is located northeast of the City of Ventura. It consists of the following canyons: Sexton, Harmon, Sloan, Aliso, Barlow, Canada Larga, School, Hall, Lake, Wheeler, O’Hare, and Manual. This project is 43,362 acres and has been selected due to its ability to protect its interface area from Ventura to Santa Paula.	1	Pending Environmental	Ventura	Ventura County Fire Protection District 2471 Latigo Avenue Oxnard CA 93030 (from VCFPD Prefire Management Plan VI)
Neighborhood Vegetation Management	Vegetation management and neighborhood fuel reduction programs	1	Idea Stage	Ventura, Santa Paula	Rich Atmore, Central Ventura County Fire Safe Council, Inc., 2977 Sexton Canyon, Ventura, CA 93003, (805) 644-6851
Santa Paula Range Fire Protection and Fuel Management Project	Enhance support and expand the wildfire notification, fire protection systems and Ranch information mapping used by Rancho Simpatica and neighbors. Provide vegetation management and fire protection through prescribed fire, grazing and fire and fuel breaks. Develop an informational booklet for preparation and safety procedures for imminent fire encroachment. Enhance ranch and oil access roads with addition clearance for emergency equipment access and safety zones. This project can be defined into two areas; one from Highway 150 (Santa Paula) east to Timber Canyon. The second area defined as Timber Canyon to Sespe Creek (Fillmore).	1	Planning	Ventura, Santa Paula	Rich Atmore, Central Ventura County Fire Safe Council, Inc., 2977 Sexton Canyon, Ventura, CA 93003, (805) 644-6851

Project	Description	Priority Rating*	Status	Community at Risk	Agency/Contact
South Mountain Area Fire Protection and Fuel Management Project	Provide vegetation management and fire protection through prescribed fire, grazing and fire and fuel breaks. Create and manage buffer zones around agricultural, residential and Oil assets at risk. Enhance ranch and oil access roads with addition clearance for emergency equipment access and safety zones. Look at fire protection actions and resources that can be used during a fire event to prepare and safe guard assets at risk. This includes neighbor notification system, Ranch informational packet for emergency personnel, and pre-fire foaming of critical buildings and facilities.	1	Planning	Ventura, Santa Paula	Rich Atmore, Central Ventura County Fire Safe Council, Inc., 2977 Sexton Canyon, Ventura, CA 93003, (805) 644-6851
Taylor Ranch and Area Fuel Management Project	The Taylor Ranch area is located west of the Ventura River and covers an area roughly from the Ventura River to Padre Juan Canyon and from Highway 101 to Red Mountain; supporting agricultural lands, oil and communication facilities. The scope of the Taylor Ranch project includes enhancing fire clearance in and around Agricultural lands and oil and communication facilities. Conducting where possible prescribe fire burning for fuel reduction and vegetation management.	1	Planning	Ventura, Santa Paula	Rich Atmore, Central Ventura County Fire Safe Council, Inc., 2977 Sexton Canyon, Ventura, CA 93003, (805) 644-6851
CCARP invasive plant species removal	Arundo and tamarisk removal programs along the Calleguas Creek watershed	2	In development	Camarillo	Ventura County Resource Conservation District (VCRCD) Christina Sulzman Wildlife Biologist Wildscape Restoration 2977 Sexton Canyon Road

Project	Description	Priority Rating*	Status	Community at Risk	Agency/Contact
					Ventura, CA 93003 Phone - (805) 644-6852
Hopper Mountain Condor Refuge	The US Fish and Wildlife contracts with the Ventura County Fire Department to provide defensible space around the Hopper Ranch Center and the bird pens.	2	Maintenance	Fillmore	Ventura County Fire Protection District 2471 Latigo Avenue Oxnard CA 93030 (from VCFPD Prefire Management Plan VI)
Vegetation management on Ojai Valley Land Conservancy's 1,537 acre preserve	Ventura River Rio Vista Preserve, Ojai Meadows Preserve, Ventura River El Nido Preserve, and San Antonio Creek – The CREW is already working on a proposal to CFSC in collaboration with the Ojai Valley Land Conservancy	2	Proposal not yet submitted	Meiners Oaks, Oak View, Ojai, Mira Monte	C.R.E.W., Wally McCall, (805) 649-8847, wmrccall@sbcglobal.net
Perimeter Vegetation Management Program	Fire Safe Council and property owner assistance for fuel mass reduction, species replacement, runoff mitigation, habitat enhancements, and wildlife escape corridors.	2	Planning	Thousand Oaks	Bill Pratt, President, Ventu Park Fire Safe Council, 141 Hope Road, Newbury Park, CA 91320, (805) 384-2748 x203, wpratt2057@aol.com
COSCA Project	The Ventura County Fire Dept. and COSCA will work together in developing a vegetation management plan that will enhance our efforts to further mitigate our threat, community partnerships that focus public education in creating defensible space will yield the most tangible results in combating the wildfire hazard. The vegetation management plan will consider the effects upon the environment, wildlife, soils, and plant life.	2	Pending Environmental	Thousand Oaks, Casa Conejo	Ventura County Fire Protection District 2471 Latigo Avenue Oxnard CA 93030 (from VCFPD Prefire Management Plan VI)
Haley/Taylor Ranch Range Improvement Project	The vegetation management area will be located north of the oil facilities in Padre Juan Canyon, south of Hwy 150, east of Los Sauces Creek and west of Lake Casitas. This area will serve to	2	Pending Environmental	Ventura	Ventura County Fire Protection District 2471 Latigo Avenue Oxnard CA 93030 (from VCFPD Prefire Management Plan VI)

Project	Description	Priority Rating*	Status	Community at Risk	Agency/Contact
	protect the Lake Casitas watershed and support range improvement.				
Condominium Landscaping Education	Design and implement a fire safe landscaping education outreach tailored to local condominium complexes and the landscape companies who serve them	3	Planning	Meiners Oaks, Oak View, Ojai, Mira Monte	Ojai Valley Fire Safe Council, Will Castagna, Grants Manager, will@firesafeojai.org 805-646-7307
Fire Safe Landscaping Contest	A local contest sponsored by the Fire Safe Council to encourage action by citizens and landscapers by raising awareness of the importance of fire safe landscaping	3	Planning	Meiners Oaks, Oak View, Ojai, Mira Monte	Ojai Valley Fire Safe Council, Will Castagna, Grants Manager, will@firesafeojai.org 805-646-7307
HOA Education Program	Develop and implement a wildfire safety education and action program designed to be disseminated through and facilitated by homeowner associations	3	Planning	Meiners Oaks, Oak View, Ojai, Mira Monte	Ojai Valley Fire Safe Council, Will Castagna, Grants Manager, will@firesafeojai.org 805-646-7307
Ojai Valley Ready, Set, Go Program	Assisting the Ventura County Fire Protection District in implementing its "Ready, Set, Go" program, a personal wildfire action plan for saving lives and property through advance planning.	3	Planning	Meiners Oaks, Oak View, Ojai, Mira Monte	Ojai Valley Fire Safe Council, Will Castagna, Grants Manager, will@firesafeojai.org 805-646-7307
Phone Book Insert Project	Update and reinsert the already-developed Wildfire Safety Tab into the local telephone directory	3	Planned, Requires Funding	Meiners Oaks, Oak View, Ojai, Mira Monte	Ojai Valley Fire Safe Council, Will Castagna, Grants Manager, will@firesafeojai.org 805-646-7307
Ventura County Community Wildfire Protection Plan Update	Conduct CWPP information gathering exercises in all fourteen communities at risk, improving the level of detail for each individual community.	3	Initial Plan Complete	Meiners Oaks, Oak View, Ojai, Mira Monte	Ojai Valley Fire Safe Council, Will Castagna, Grants Manager, will@firesafeojai.org 805-646-7307
Community Fire Fighting Enhancements	Fire Safe Council and property owner assistance for developing water cistern systems. Fire Safe Council assistance for purchasing portable fire fighting	3	Planning	Thousand Oaks	Bill Pratt, President, Ventu Park Fire Safe Council, 141 Hope Road, Newbury Park, CA 91320, (805) 384-2748 x203, wpratt2057@aol.com

Project	Description	Priority Rating*	Status	Community at Risk	Agency/Contact
	and foam application equipment.				
Community-at-Risk Detailed Plan	Fire Safe Council assistance in hazard assessment, mitigation planning, and continuing improvement of community preparedness.	3	Planning	Thousand Oaks	Bill Pratt, President, Ventu Park Fire Safe Council, 141 Hope Road, Newbury Park, CA 91320, (805) 384-2748 x203, wpratt2057@aol.com
Home Hardening and Residential Hazard Reduction - “Cash for Kindling” Program	Property owner assistance for structural modifications to reduce ember penetration and reduce exterior flammable surfacing materials, and for landscaping modifications for species replacement, tree maintenance and ladder fuels reduction. Fire Safe Council assistance for sponsorship and promotion of neighborhood “dumpster days” for do it yourself debris removal.	3	Planning	Thousand Oaks	Bill Pratt, President, Ventu Park Fire Safe Council, 141 Hope Road, Newbury Park, CA 91320, (805) 384-2748 x203, wpratt2057@aol.com
Neighborhood Wildfire Emergency Response Program	Fire Safe Council assistance for communications equipment & training. Property owner assistance for purchasing foam systems. Fire Safe Council assistance for promotion of community alert program and senior and disabled persons evacuation coordination. Further assistance for website development.	3	Planning	Thousand Oaks	Bill Pratt, President, Ventu Park Fire Safe Council, 141 Hope Road, Newbury Park, CA 91320, (805) 384-2748 x203, wpratt2057@aol.com
Asset Protection Plans	Asset protection plans for orchards, pastureland, adjacent structures, and sensitive wildlife habitats	3	Planning	Ventura, Santa Paula	Rich Atmore, Central Ventura County Fire Safe Council, Inc., 2977 Sexton Canyon, Ventura, CA 93003, (805) 644-6851
Central Ventura County Ready, Set, Go Program	Assisting the Ventura County Fire Protection District in implementing its “Ready, Set, Go” program, a personal wildfire action plan for saving lives and property through advance planning.	3	Planning	Ventura, Santa Paula	Rich Atmore, Central Ventura County Fire Safe Council, Inc., 2977 Sexton Canyon, Ventura, CA 93003, (805) 644-6851
Chipper Days	Implement local “chipper days” to encourage brush clearance on individual properties by providing	3	Planning	Ventura, Santa Paula	Rich Atmore, Central Ventura County Fire Safe Council, Inc., 2977 Sexton Canyon, Ventura, CA 93003, (805) 644-6851

Project	Description	Priority Rating*	Status	Community at Risk	Agency/Contact
	chipping, hauling, and disposal at no cost to residents.				
Common Address Protocol and Signage	A common address protocol and signage for rural areas	3	Planning	Ventura, Santa Paula	Rich Atmore, Central Ventura County Fire Safe Council, Inc., 2977 Sexton Canyon, Ventura, CA 93003, (805) 644-6851
Evacuation Plans	Area evacuation plans for people and livestock	3	Planning	Ventura, Santa Paula	Rich Atmore, Central Ventura County Fire Safe Council, Inc., 2977 Sexton Canyon, Ventura, CA 93003, (805) 644-6851
Fire Safe Vegetation Research and Display	Provide education and examples of fire safe vegetation to be used in populated communities and Agricultural operations. For this project agricultural institutions would be used to consult and provide the area needed for community display.	3	Planning	Ventura, Santa Paula	Rich Atmore, Central Ventura County Fire Safe Council, Inc., 2977 Sexton Canyon, Ventura, CA 93003, (805) 644-6851
Fire Safety Education Outreach	Creation and distribution of newspaper inserts that describe fire safety programs and available methods for protecting homes and structures.	3	Planning	Ventura, Santa Paula	Rich Atmore, Central Ventura County Fire Safe Council, Inc., 2977 Sexton Canyon, Ventura, CA 93003, (805) 644-6851
Gutter Brigades	Development of gutter brigades of local volunteers and community groups to clear leaf accumulation in gutters before the start of fire season.	3	Planning	Ventura, Santa Paula	Rich Atmore, Central Ventura County Fire Safe Council, Inc., 2977 Sexton Canyon, Ventura, CA 93003, (805) 644-6851
Local Information Maps for Firefighters	Ranch plans containing information for fire personnel including maps depicting water sources, safety zones, and evacuation routes for ranch personnel and domestic animals	3	Planning	Ventura, Santa Paula	Rich Atmore, Central Ventura County Fire Safe Council, Inc., 2977 Sexton Canyon, Ventura, CA 93003, (805) 644-6851
Wildfire Safety Expo	Sponsor annual community fire protection exposition	3	Planning	Ventura, Santa Paula	Rich Atmore, Central Ventura County Fire Safe Council, Inc., 2977 Sexton Canyon, Ventura, CA 93003, (805) 644-6851
SCARP invasive plant species removal	Arundo and tamarisk removal programs along the Santa Clara River watershed	2	Completed	Santa Paula	Ventura County Resource Conservation District (VCRCD) Christina Sulzman Wildlife Biologist

Project	Description	Priority Rating*	Status	Community at Risk	Agency/Contact
					Wildscape Restoration 2977 Sexton Canyon Road Ventura, CA 93003 Phone - (805) 644-6852

* Note that these ratings are based on the general project priority ratings described in Section 7.2 Wildfire Safety Project Priorities.