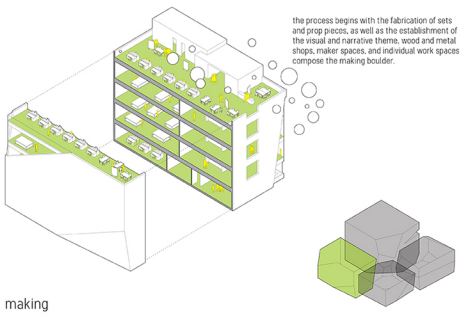
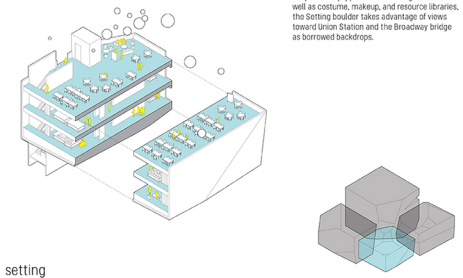


PROGRAM MASS



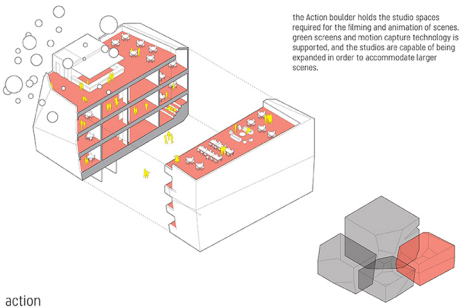
the process begins with the fabrication of sets and prop pieces, as well as the establishment of the visual and narrative themes. wood and metal shops, maker spaces, and individual work spaces compose the making boulder.

making



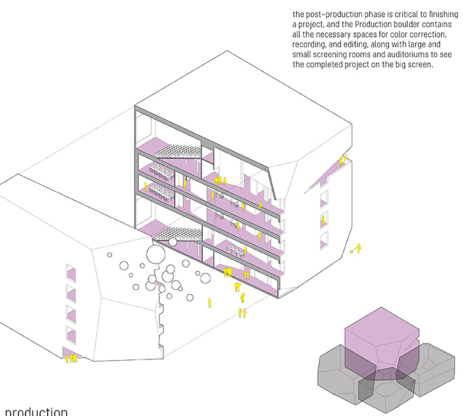
the next step requires the assembly of sets and set pieces, equipped with set design studios as well as costume, makeup, and resource libraries. the Setting boulder takes advantage of views toward Union Station and the Broadway bridge as borrowed backdrops.

setting



the Action boulder holds the studio spaces required for the filming and animation of scenes. green screens and motion capture technology is supported, and the studios are capable of being expanded in order to accommodate larger scenes.

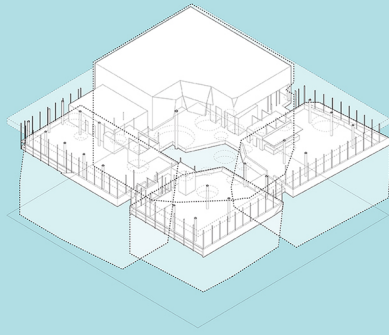
action



the post-production phase is critical to finishing a project, and the Production boulder contains all the necessary spaces for color correction, recording, and editing, along with large and small screening rooms and auditoriums to see the completed project on the big screen.

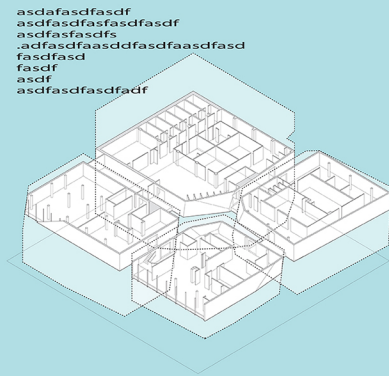
production

03 PLAN



asdasdfasdf
asdfasdfasdfasdf
asdfasdfasdfs
.adfasdfasdsdfasdfasdfasdf
fasdfasdf
fasdf
asdf
asdfasdfasdfadf

03 PLAN

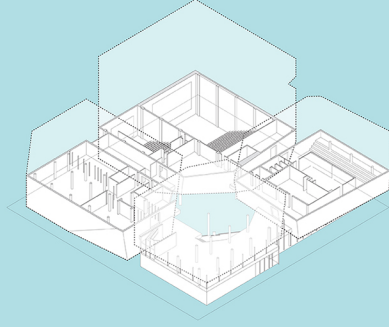


asdasdfasdf
asdfasdfasdfasdf
asdfasdfasdfs
.adfasdfasdsdfasdfasdfasdf
fasdfasdf
asdf
asdfasdfasdfadf



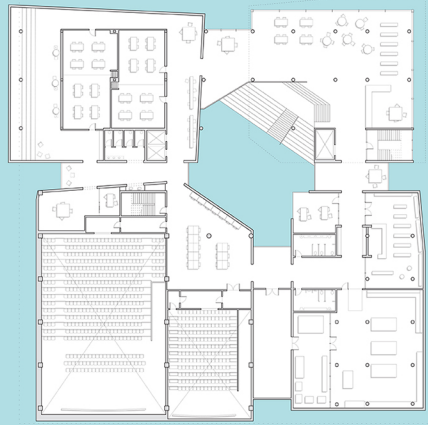
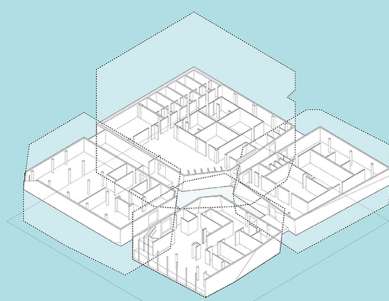
asdasdfasdf
asdfasdfasdfasdf
asdfasdfasdfs
.adfasdfasdsdfasdfasdfasdf
fasdfasdf
fasdf
asdf
asdfasdfasdfadf

03 PLAN



asdasdfasdf
asdfasdfasdfasdf
asdfasdfasdfs
.adfasdfasdsdfasdfasdfasdf
fasdfasdf
fasdf
asdf
asdfasdfasdfadf

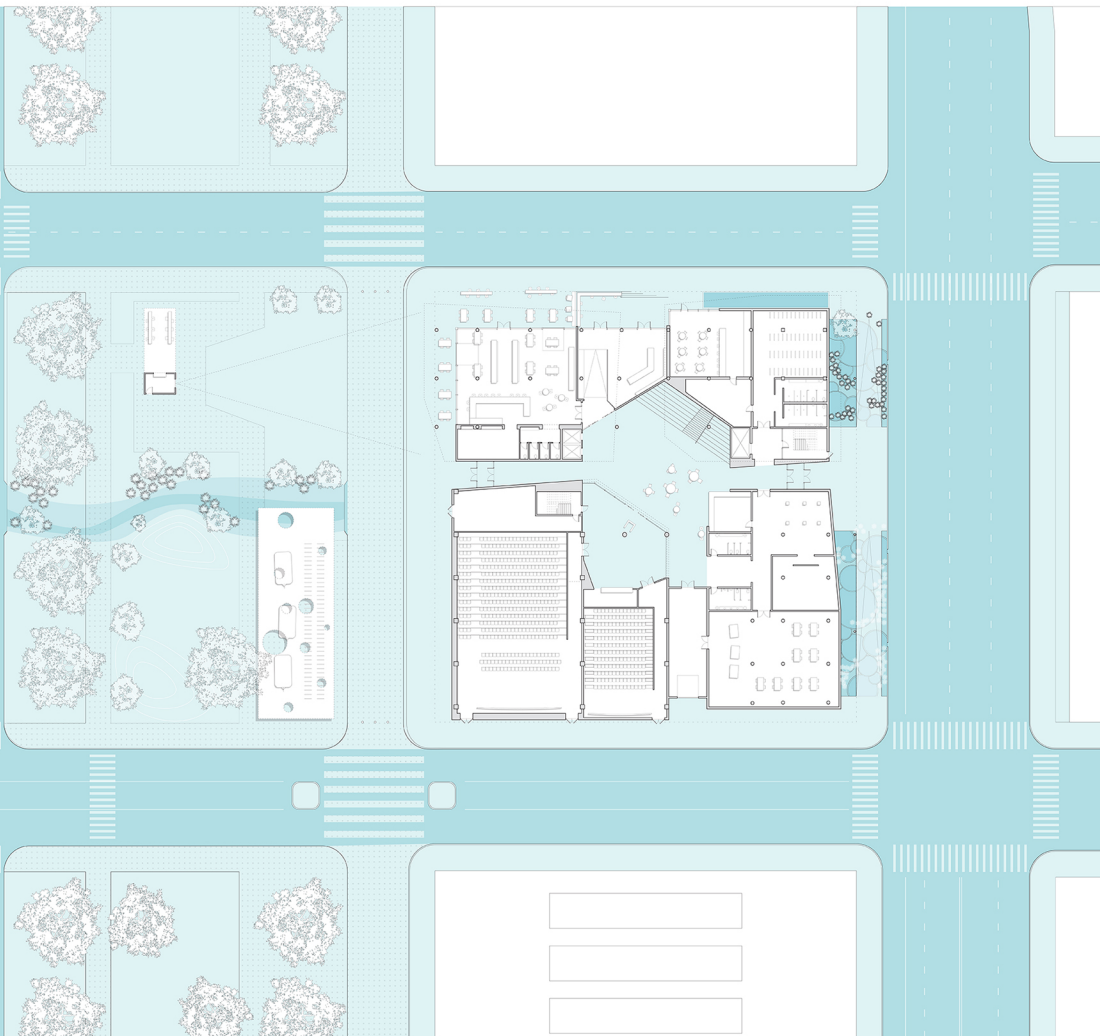
03 PLAN

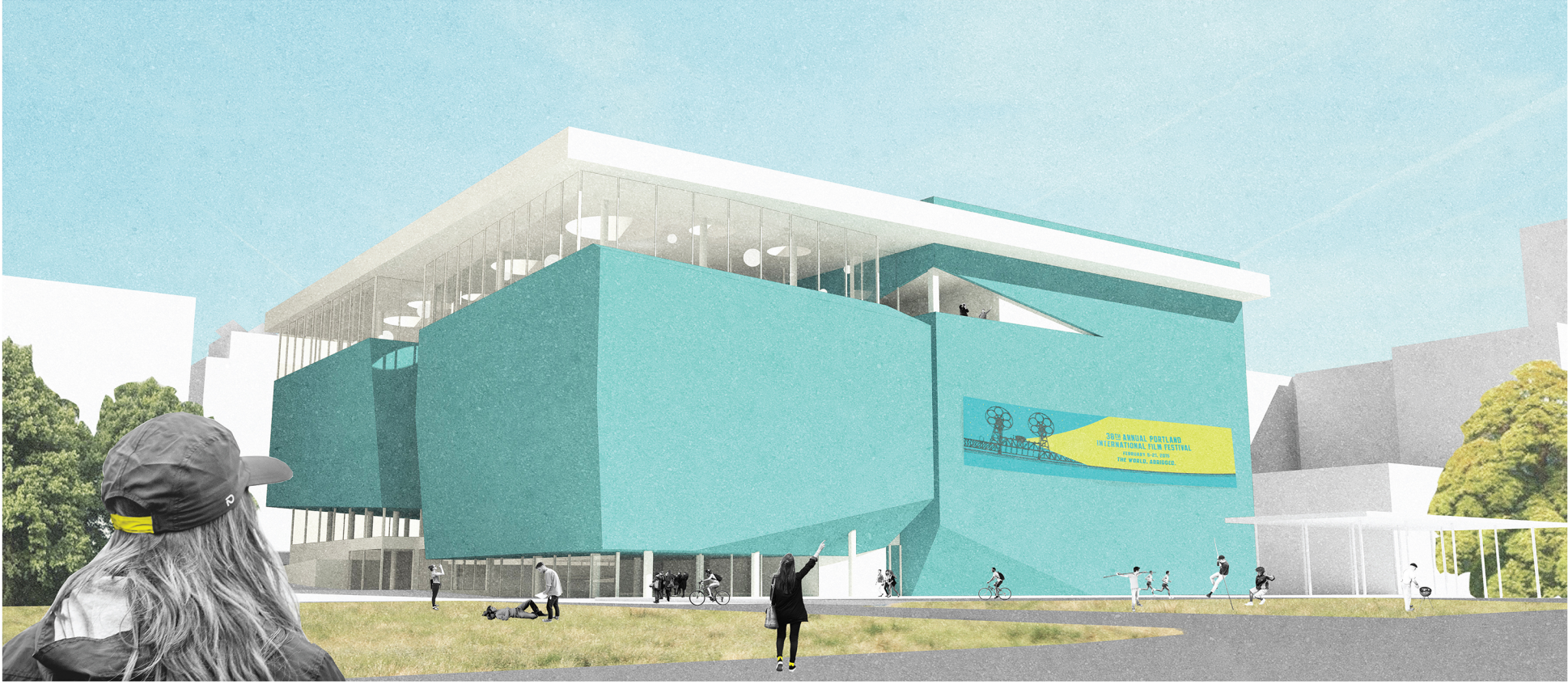


asdasdfasdf
asdfasdfasdfasdf
asdfasdfasdfs
.adfasdfasdsdfasdfasdfasdf
fasdfasdf
fasdf
asdf
asdfasdfasdfadf



03 PLAN





i.TMI

education is an adventure

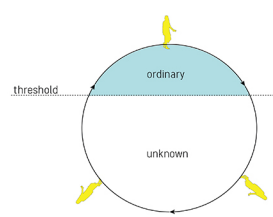
the archetype of the Hero's Journey is a tale as old as time. The power of this narrative through history derives from the fact that it distills the essential human experience. It speaks to that ritual transformation of struggle and success, of coming of age, of growing, of learning, of experience. It is the essential formula for adventure.

The Institute of the Moving Image is a film school that challenges the traditional hierarchy of education by encouraging exploration and self-motivation through adventurous experiences.

The curriculum returns to the idea of apprenticeship, thereby forcing collaboration. The architecture supports this ambition by harnessing the archetypal elements in the Hero's Journey that most strongly connect with the human experience.

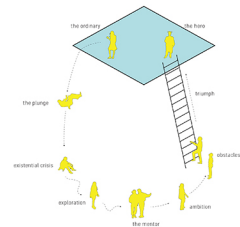
the monomyth

proposed by Joseph Campbell in his 1949 book "The Hero with a Thousand Faces," the monomyth, or Hero's Journey, is the narrative framework in myth, literature, and film that spans history and geography. It begins with a hero in the ordinary, accepting a call to action, crossing the threshold to the unknown, meeting accomplices, struggling, triumphing, and eventually returning presented as a hero.



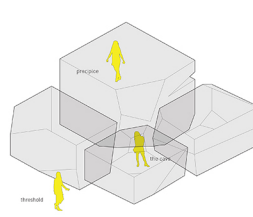
the journey

Higher education closely follows the archetype of the Hero's Journey: young adults leave the comfort of home to explore an unknown world where they will face academic, social, and personal challenges. In the process, there are successes and failures, but experience can lead to progress with the help of good mentors.



liminal space

liminality is a transitional phase-shift, where one has left their previous, more novice state, but has not yet taken their new form. Liminal space is the physical space used in literature and film to indicate character development or illustrate a transformative moment, often set on the fringes or in-between.



synthesis

by analyzing the cycle and archetypes of the Hero's Journey, and by considering the ideal form of film education, an architecture is developed to sync these concepts into a cohesive, narrative architecture of adventure.

