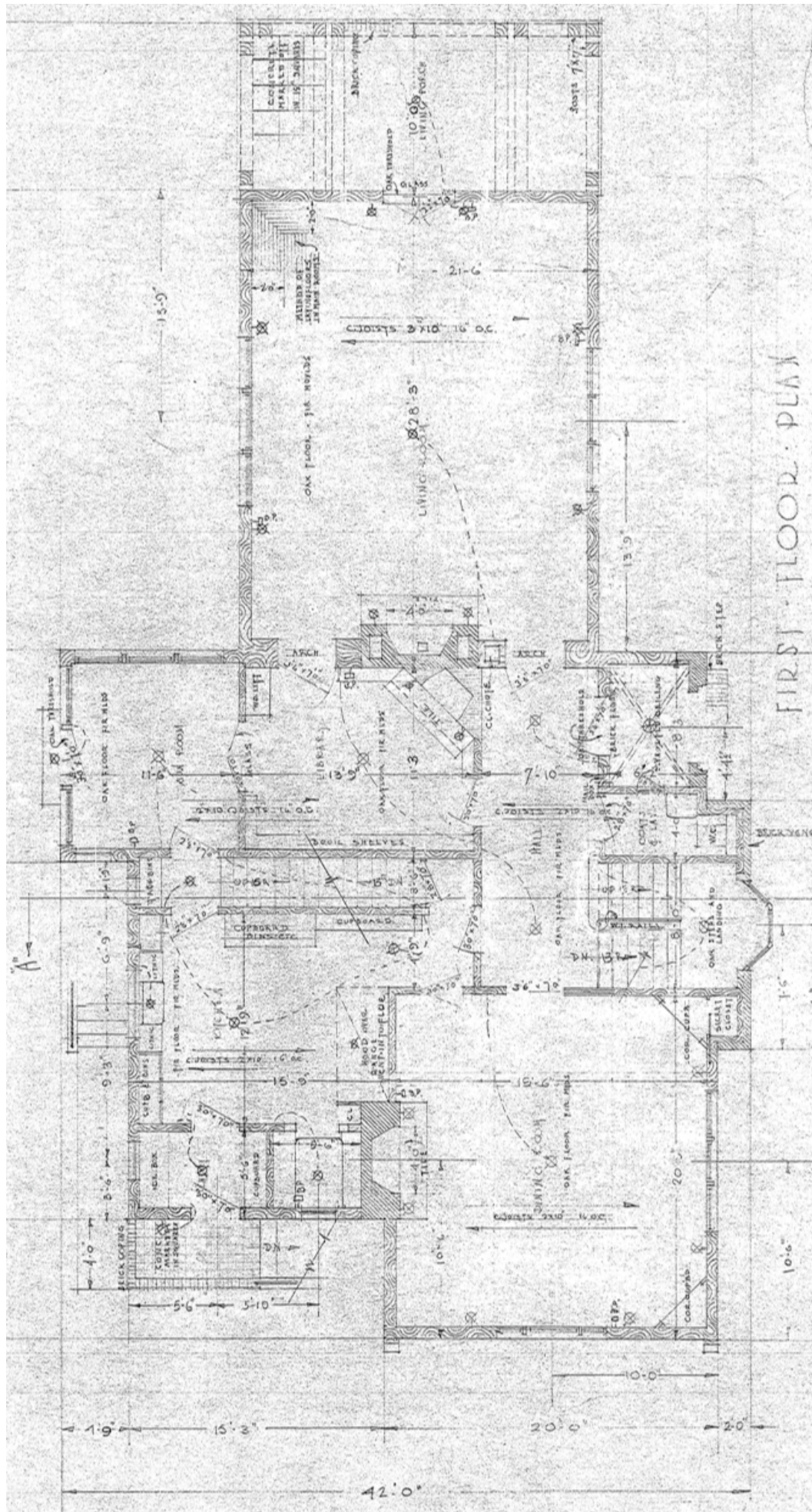


# Appendix to McMorran House Document

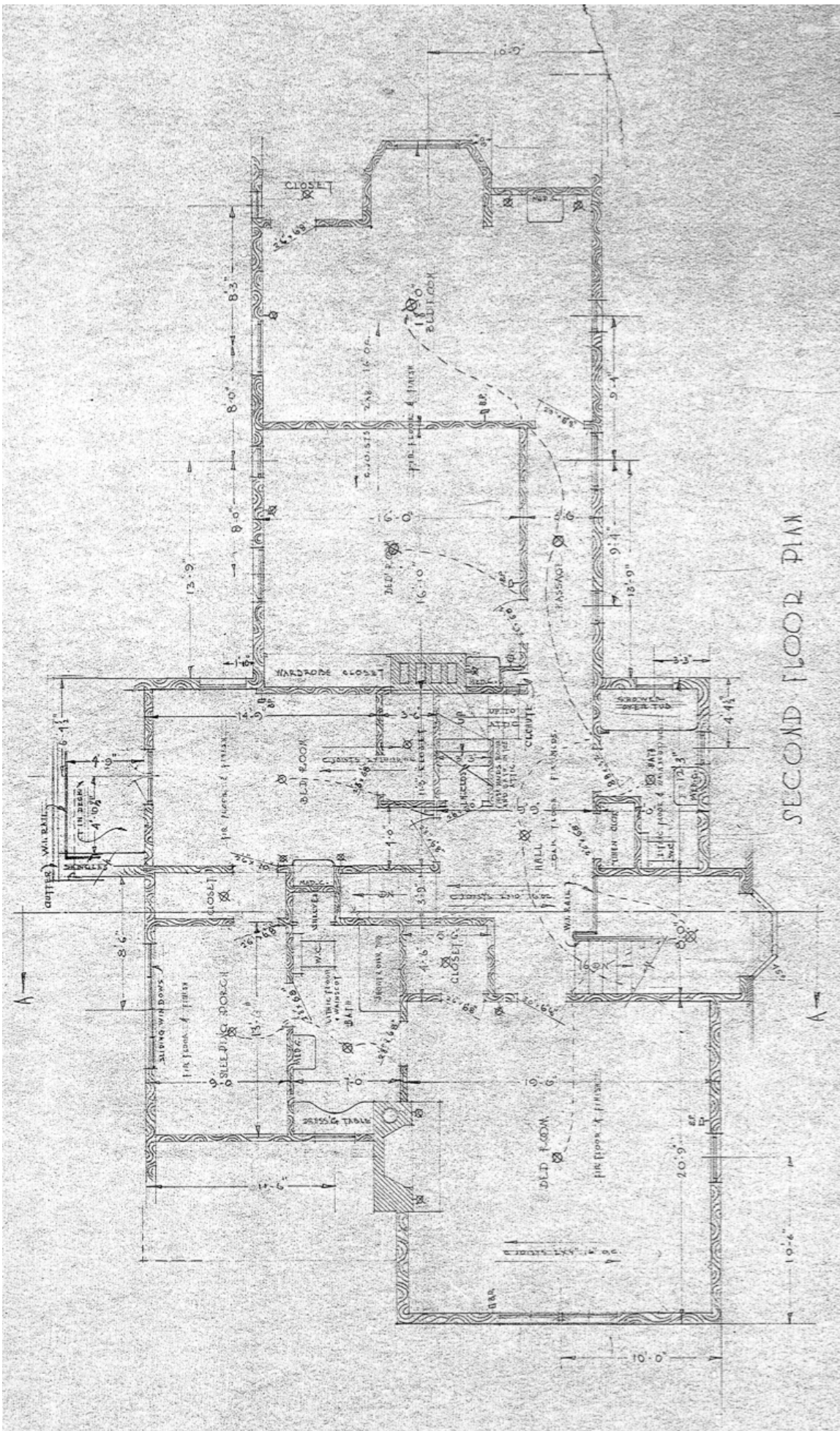
## Additional Drawings and Images



1924 Construction Drawings : Roscoe D. Hemenway

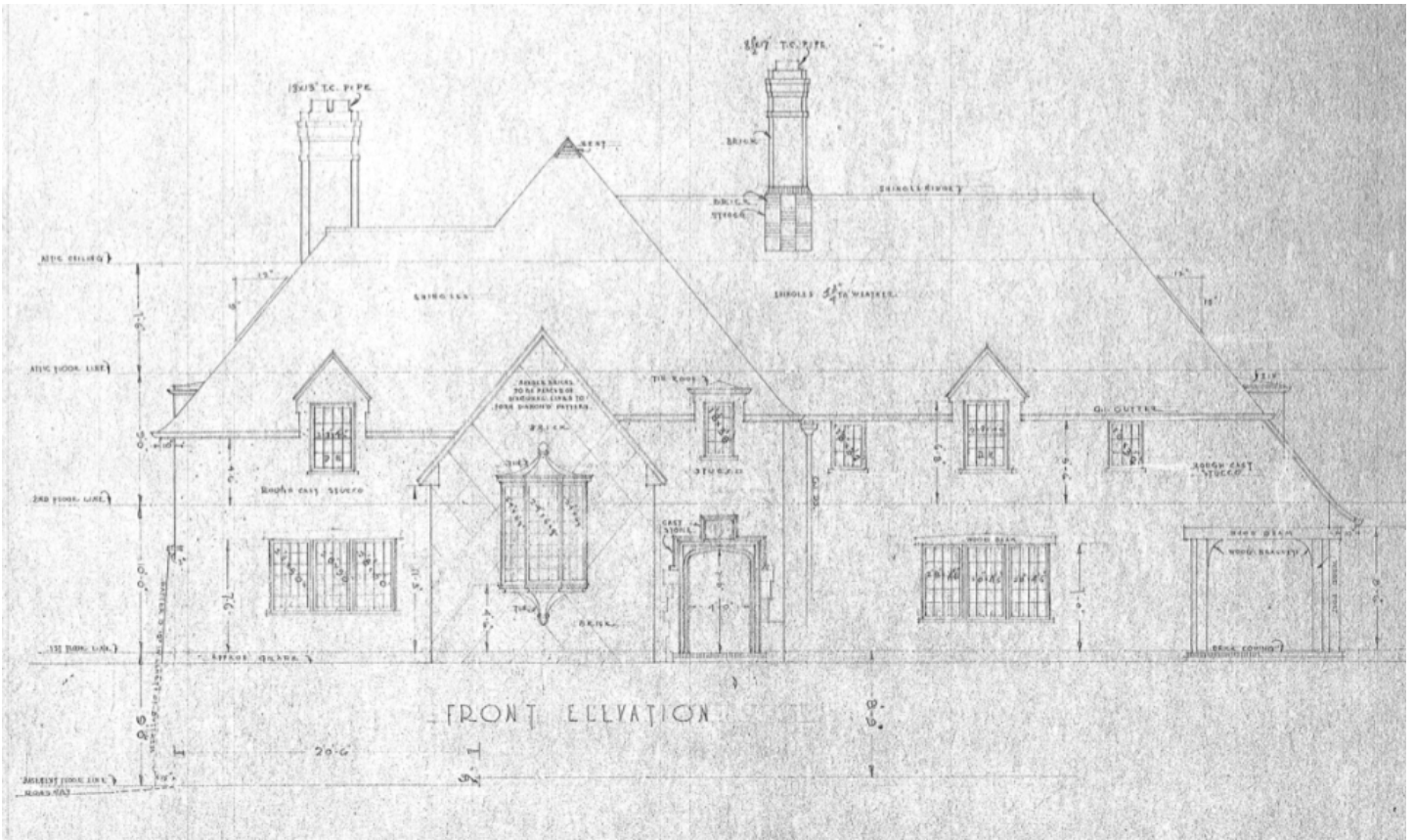




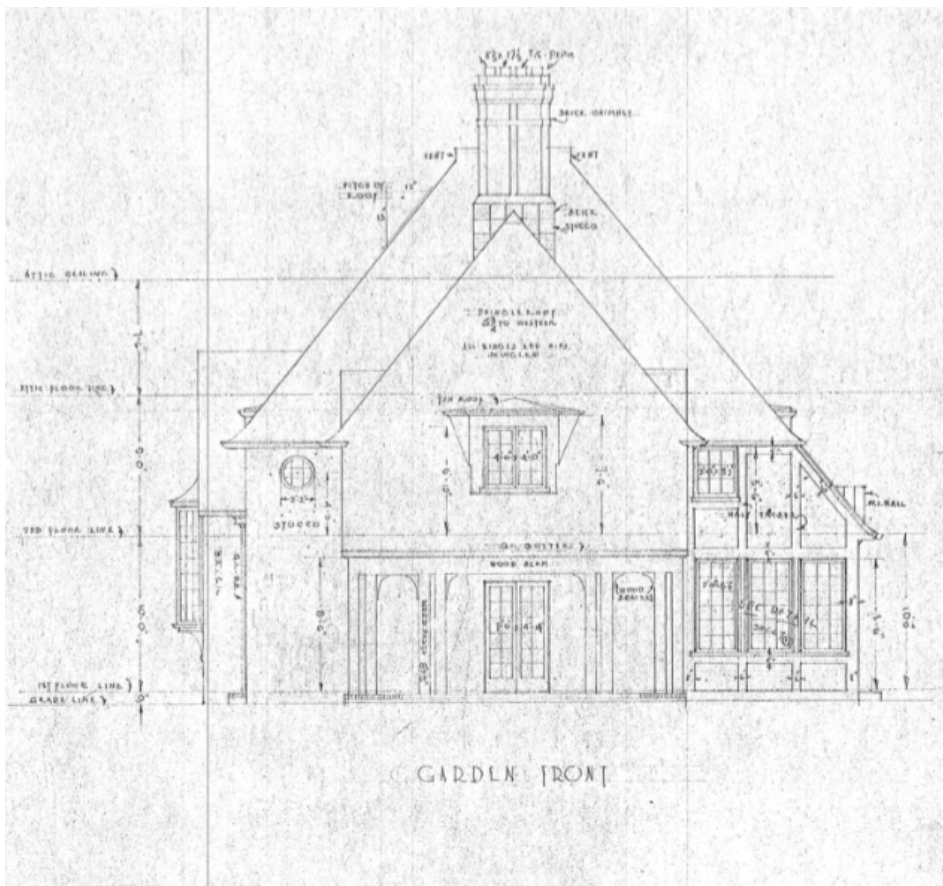
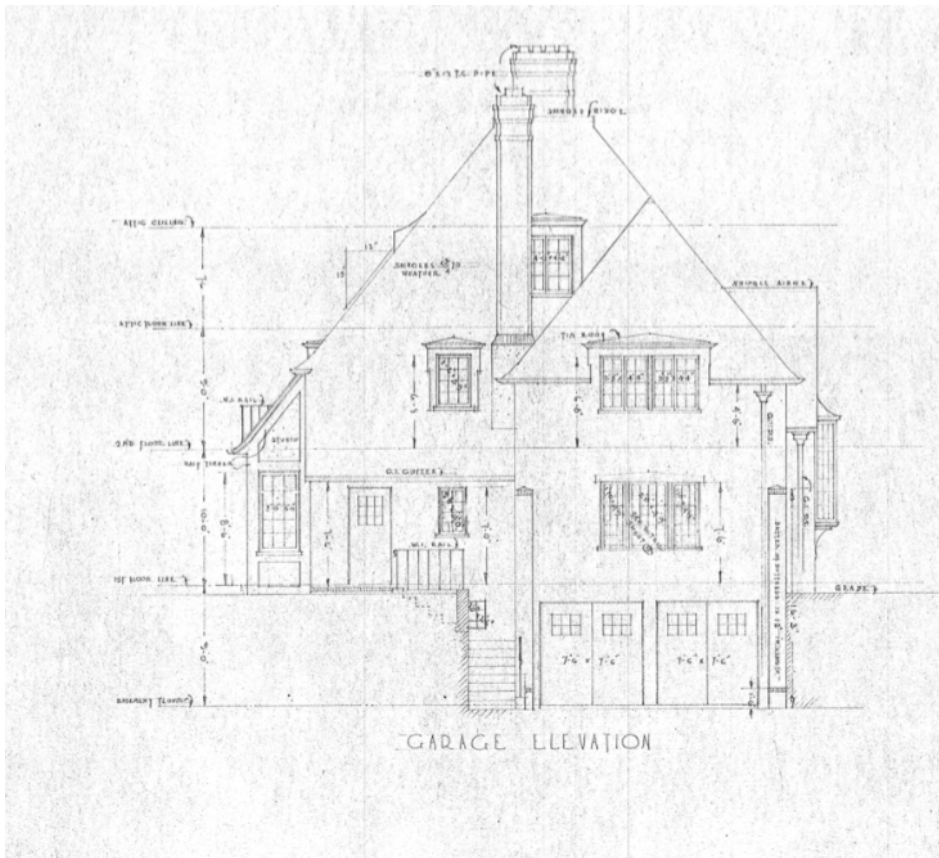


SECOND FLOOR PLAN

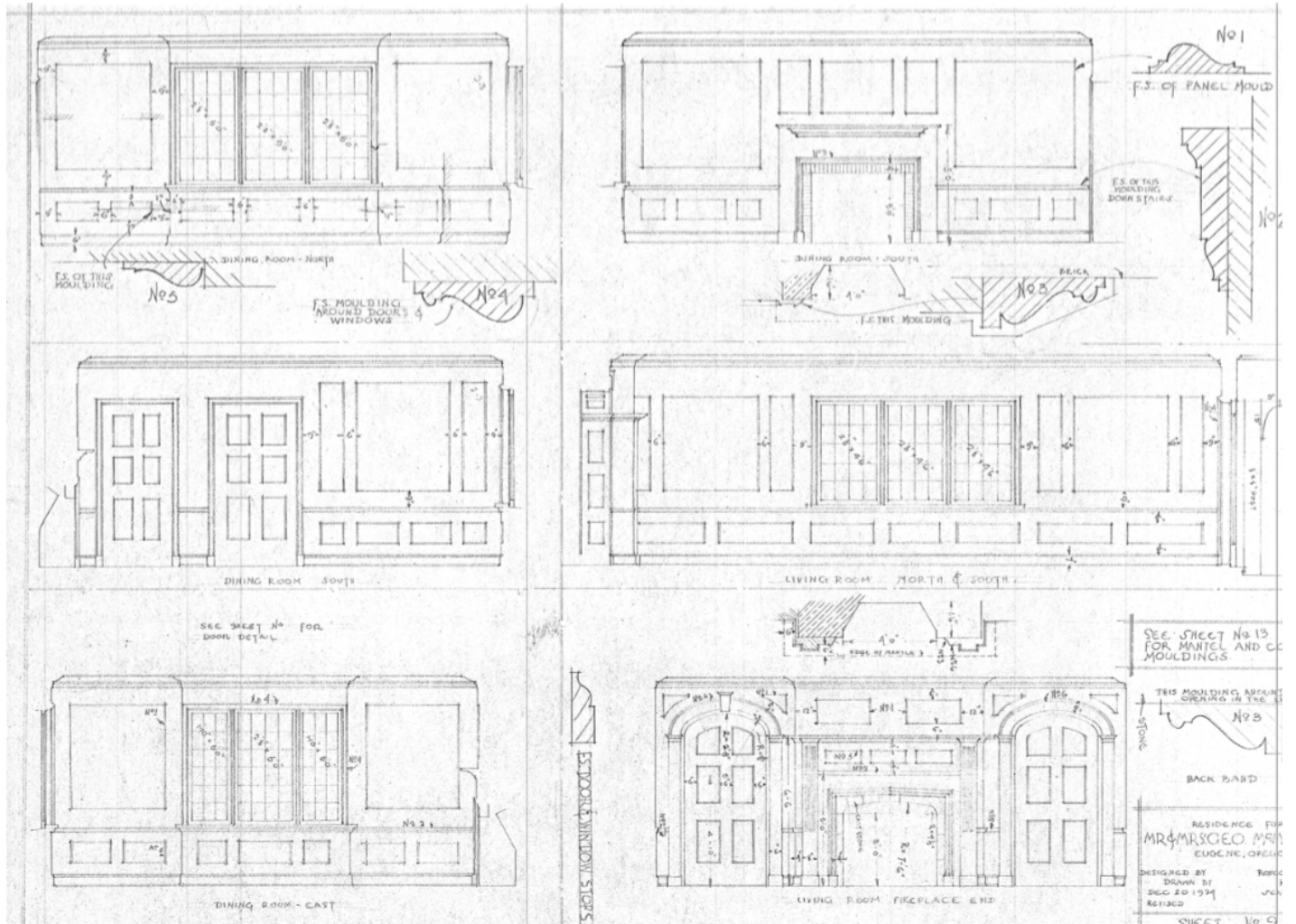
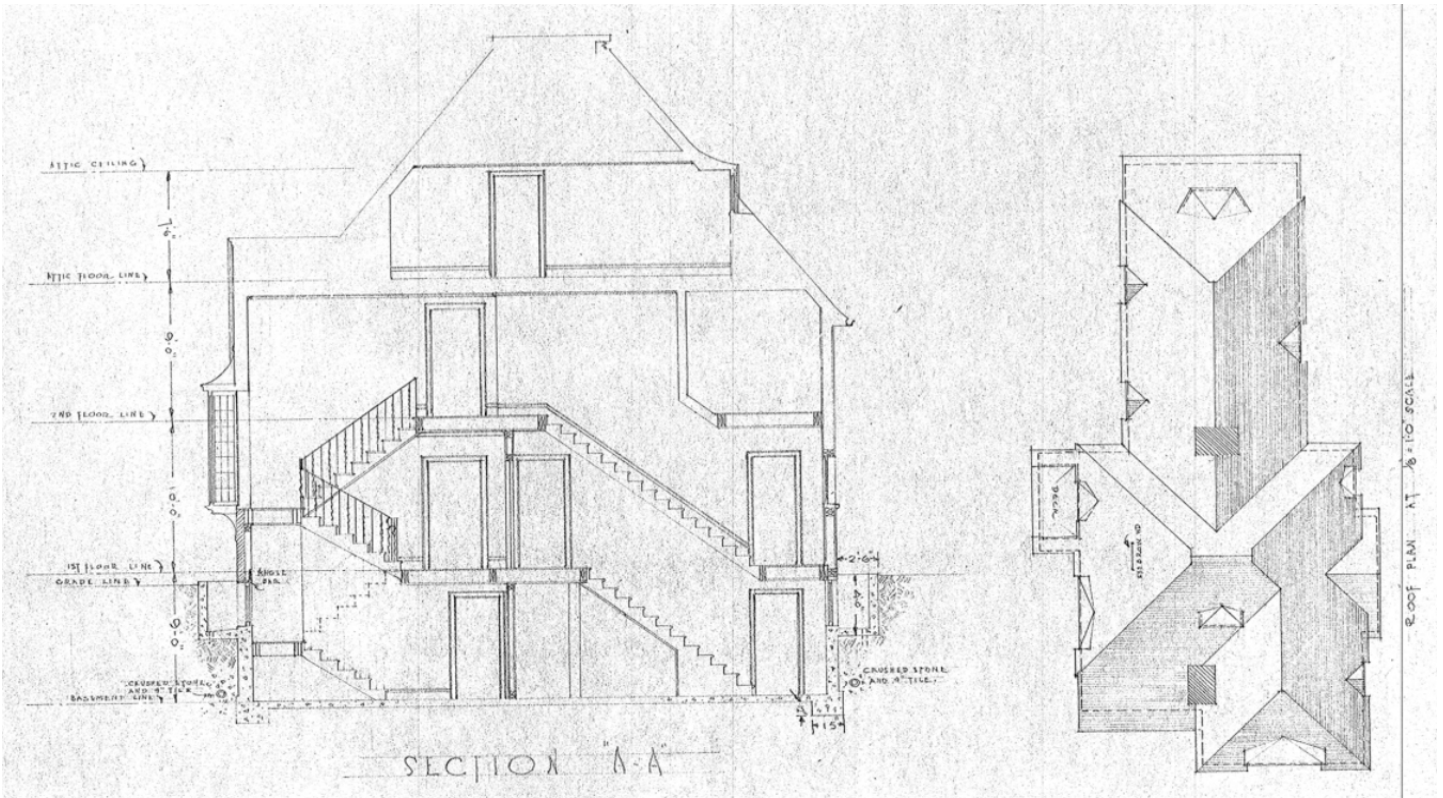




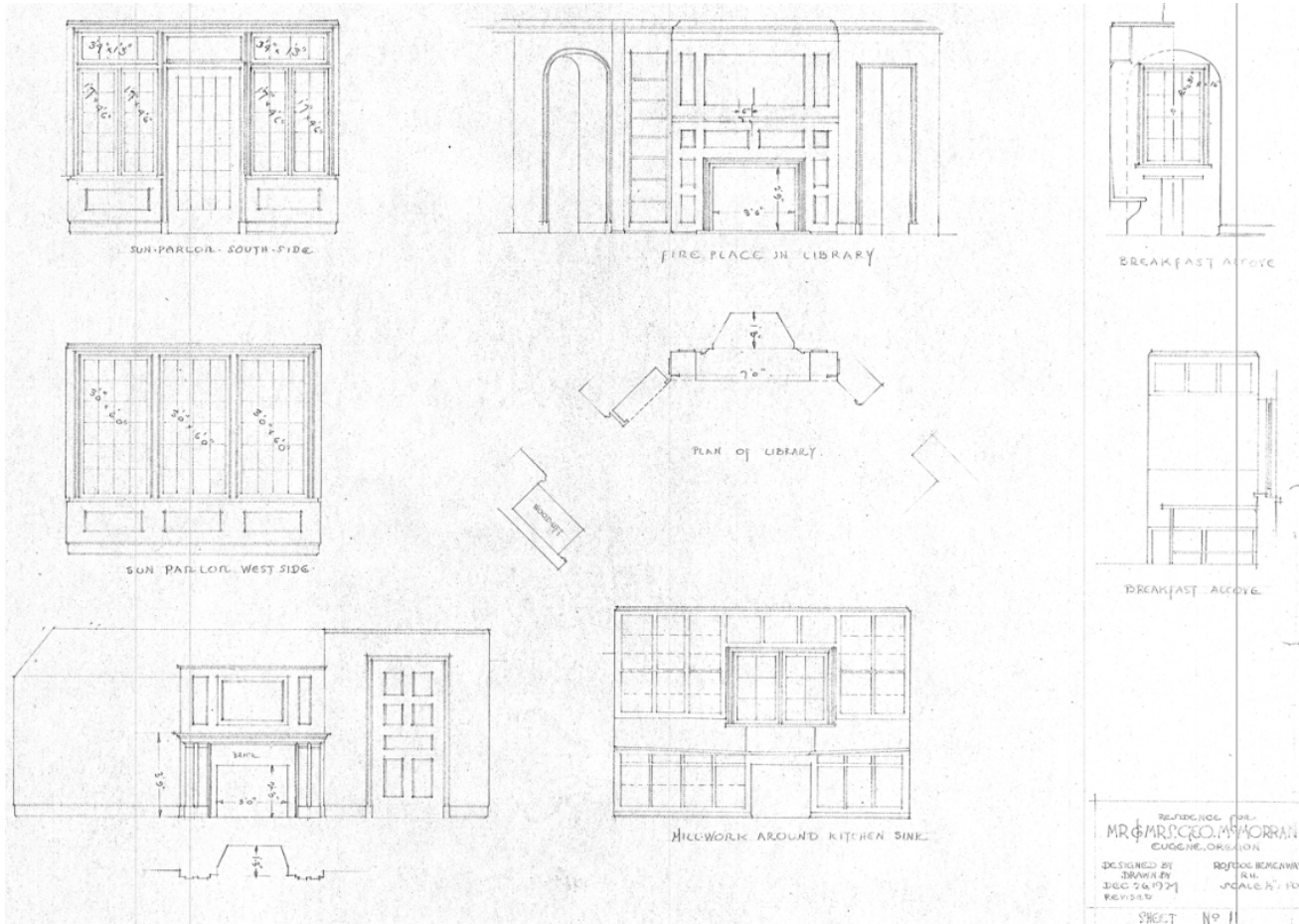
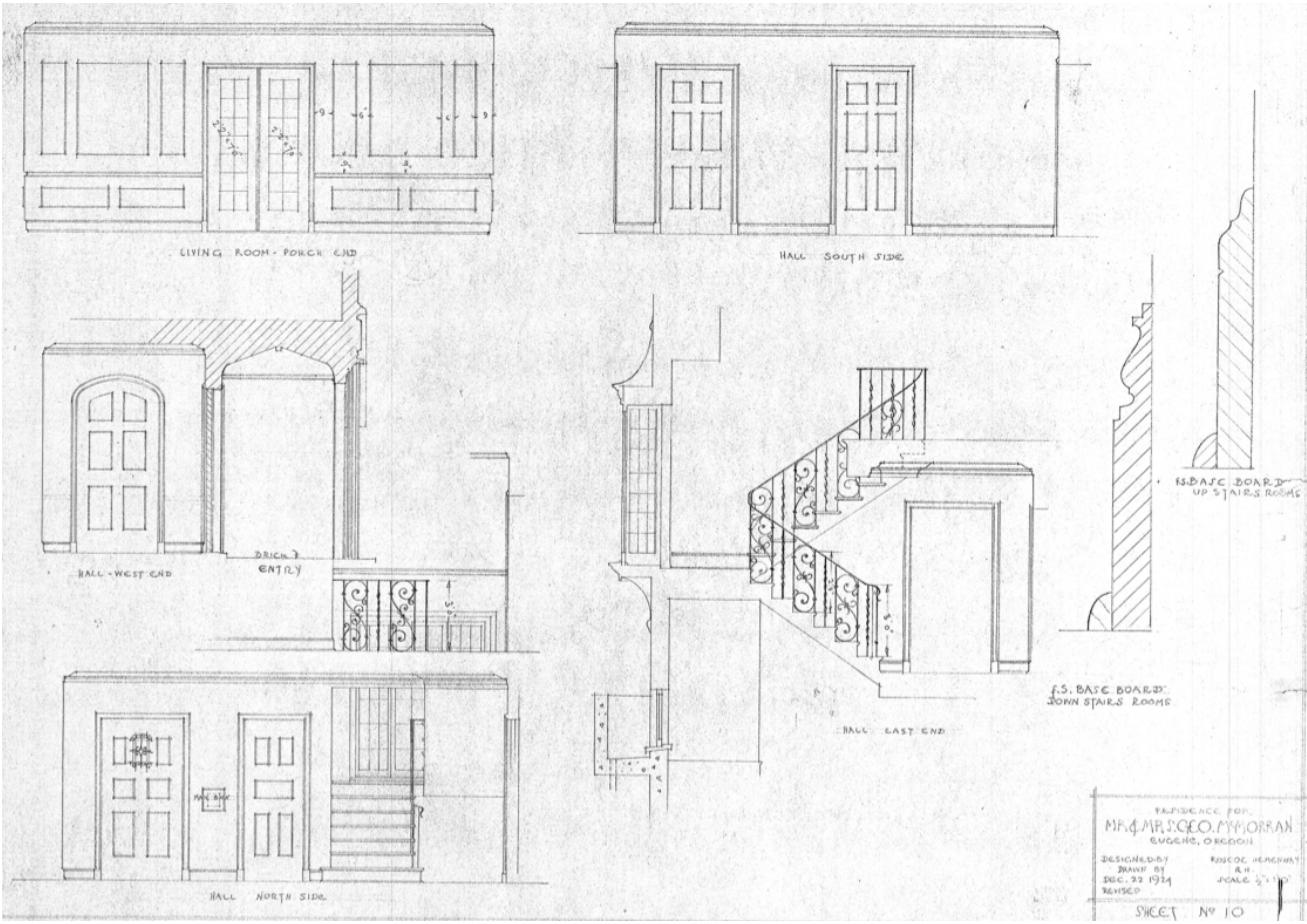




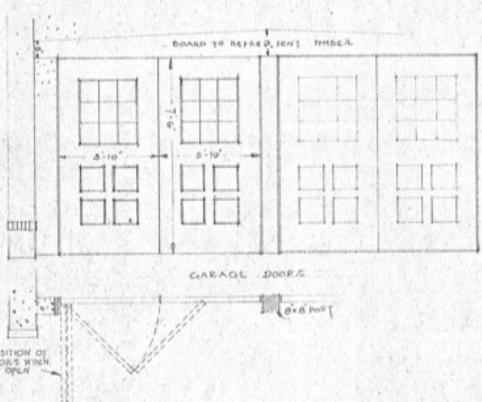
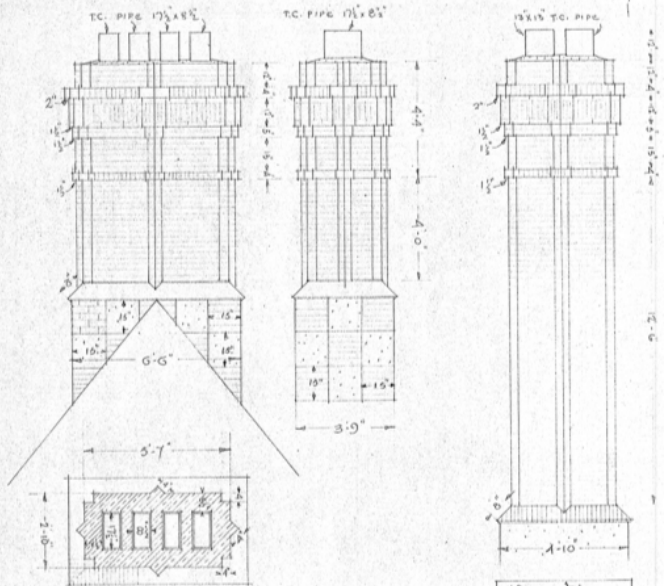
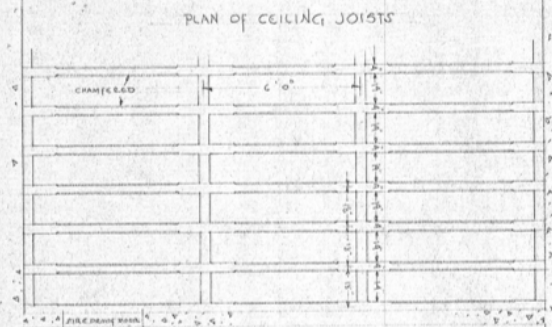
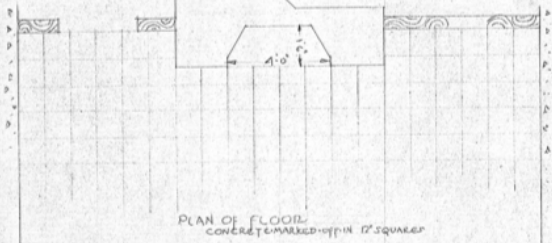
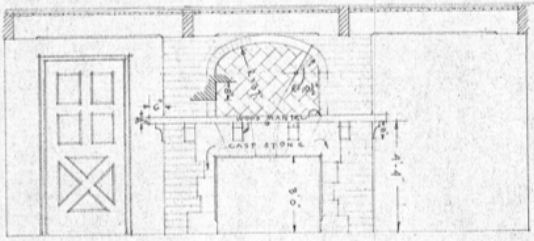












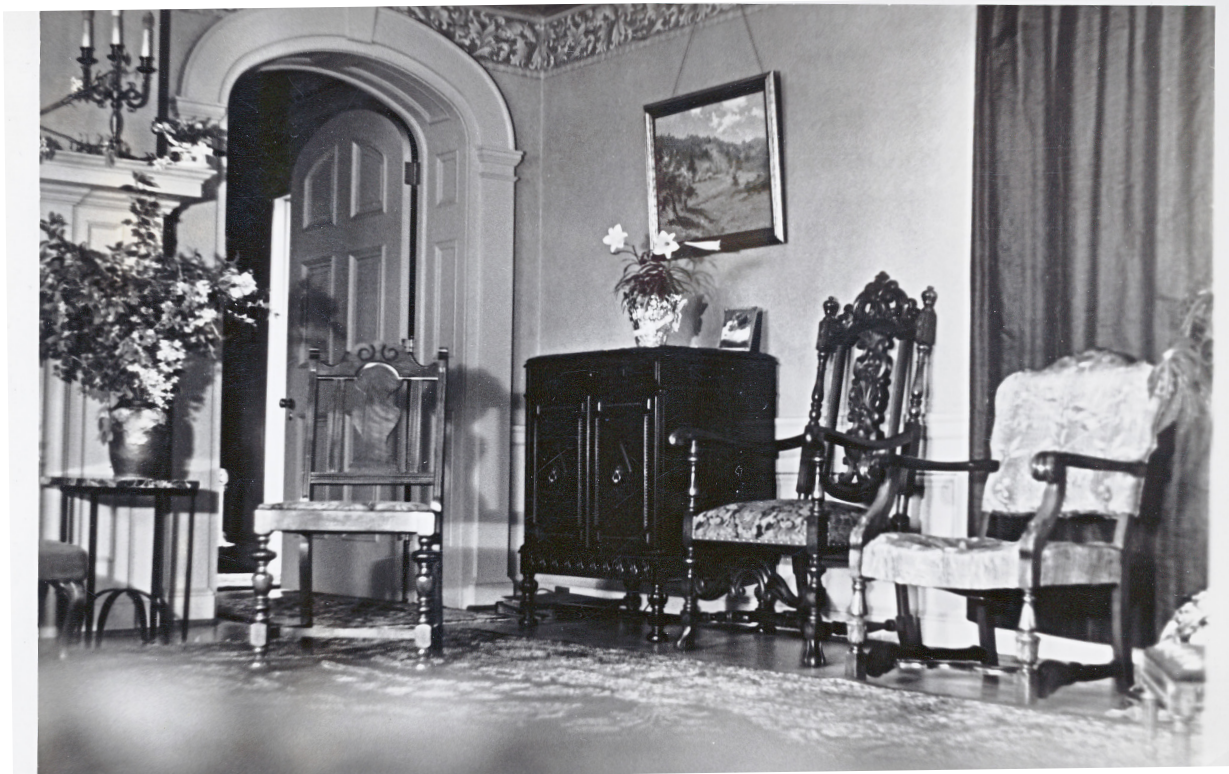
DESIGNED BY  
MR. & MRS. C. C. EUGEN  
DRAWN BY  
DEC 26 1929  
REVISION  
SHEET



1932 Photographs  
(Courtesy of William R. Riley)



Formal Dining Room



Living Room





Living Room



# 1989 Roof Remodel Photographs



North Facade



East Facade





South Facade



South Facade



## 2009 Photographs



Original basalt steps on the edge of the front (north) garden



Original walkway in the front garden





Original walkway and ironwork in the front garden



Driveway on the east with parts of the original basalt wall





Opal Clark Memorial Rosegarden



Patio on the south side





Newly exposed original oak flooring in the living room



Library with original flooring





Billiards room in the basement



Front door



Stained glass window in the main entry