

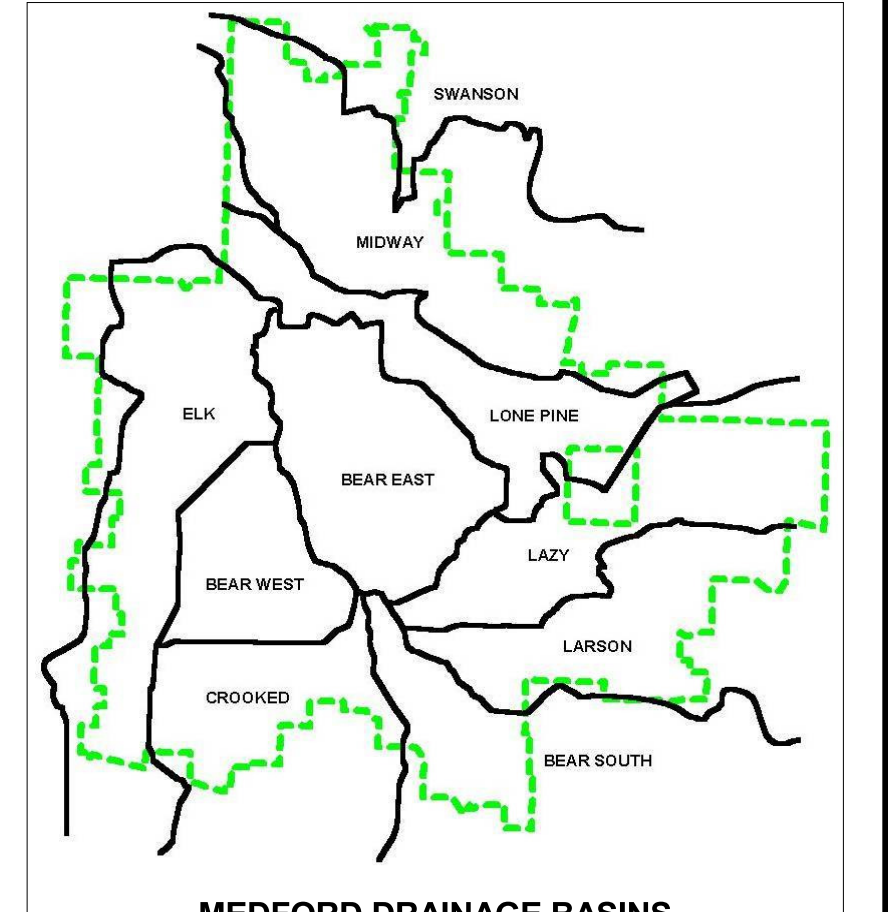
MEDFORD RIPARIAN INVENTORY

Bear Creek Tributaries

June 2002

LEGEND

- DRAINAGE BASINS
- URBAN GROWTH BOUNDARY
- SECTION LINES
- STREAMS
- PONDS
- WETLANDS
- TREES & SHRUBS
- NON-WOODY & NO VEGETATION
- ASSESSMENT REACHES
- REACH CODES
- REFERENCE REACHES
- RIPARIAN CORRIDORS
- TAXLOTS



MAP 1. MIDWAY CREEK AND SWANSON CREEK DRAINAGE BASINS
 MAP 2. LONE PINE CREEK AND BEAR CREEK EAST DRAINAGE BASINS
 MAP 3. LAZY CREEK AND LARSON CREEK DRAINAGE BASINS
 MAP 4. ELK CREEK, BEAR CREEK WEST, CROOKED CREEK, BEAR CREEK SOUTH AND BEAR CREEK EAST DRAINAGE BASINS

DISCLAIMERS AND REGULATORY INFORMATION

- Information shown on this map is for planning purposes only and is subject to change.
- Activities in riparian corridors are regulated by the City of Medford. Riparian corridor boundary locations on this map are approximate. Riparian corridors extend 50 feet horizontally from the top of bank on each side of the stream or from the boundary of any locally significant wetland within or adjacent to a riparian corridor. In all cases actual field conditions determine riparian corridor boundaries. You are advised to contact the City of Medford Planning Department with regulatory questions.
- Streams, wetlands and other waters mapping is approximate. Not all wetlands and other waters in the Medford Urban Growth Boundary are shown on this map. You are advised to contact the City of Medford Planning Department, Oregon Division of State Lands and the U.S. Army Corps of Engineers for information on regulated waterways.
- Vegetation information was provided by the City of Medford from 1998 aerial photographs and is used as-is. No claim is made as to the accuracy or precision of the information.
- All streams and associated riparian areas in the Medford urban growth boundary were inventoried with the exception of Bear Creek.

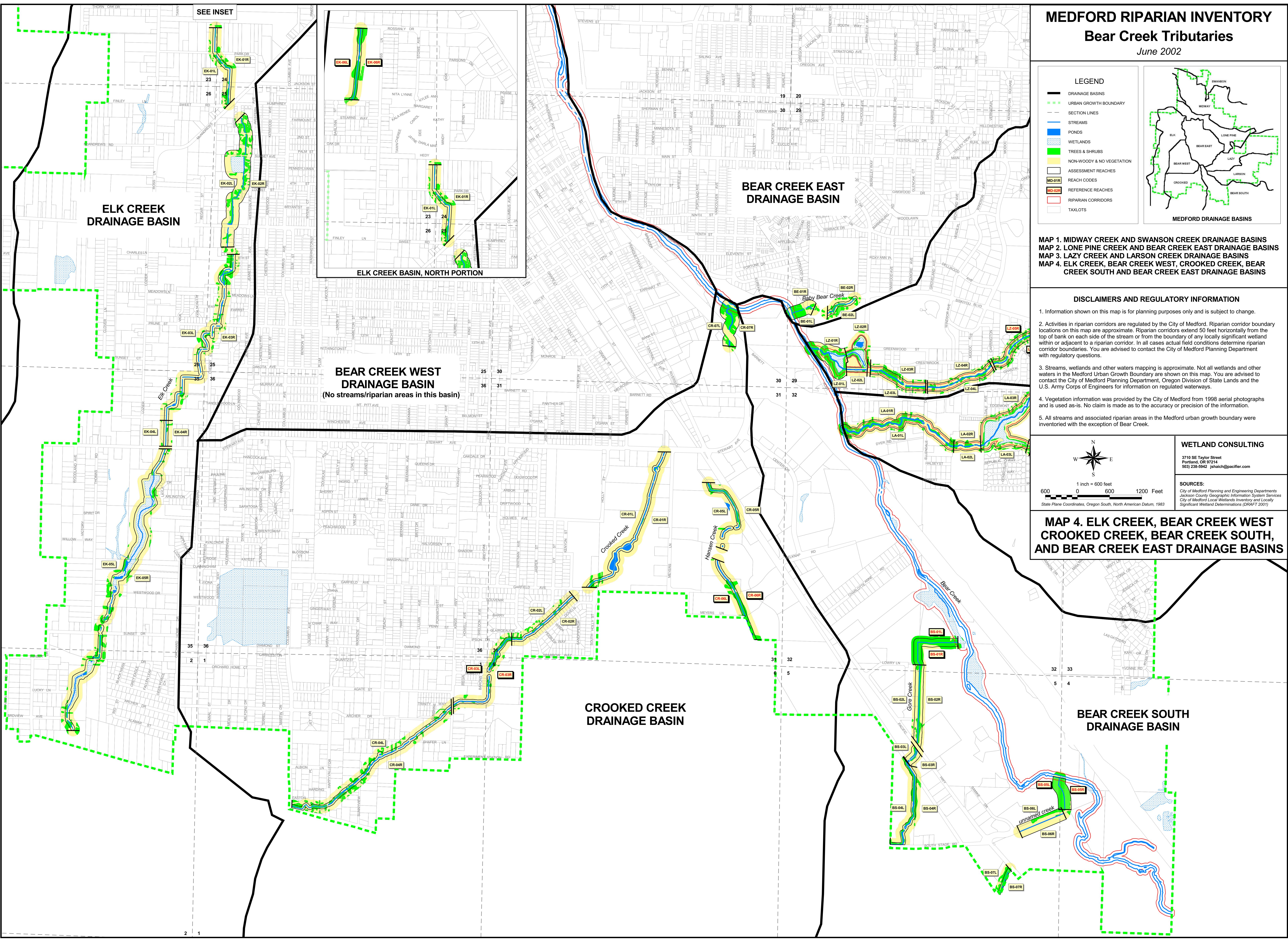
WETLAND CONSULTING

3710 SE Taylor Street
 Portland, OR 97214
 503 238-5942 jshaich@pacifier.com

SOURCES:
 City of Medford Planning and Engineering Departments
 Jackson County Geographic Information System Services
 City of Medford Local Wetlands Inventory and Locally Significant Wetland Determinations (DRAFT 2001)

1 inch = 600 feet
 600 0 600 1200 Feet
 State Plane Coordinates, Oregon South, North American Datum, 1983

MAP 4. ELK CREEK, BEAR CREEK WEST, CROOKED CREEK, BEAR CREEK SOUTH, AND BEAR CREEK EAST DRAINAGE BASINS



SEE INSET

