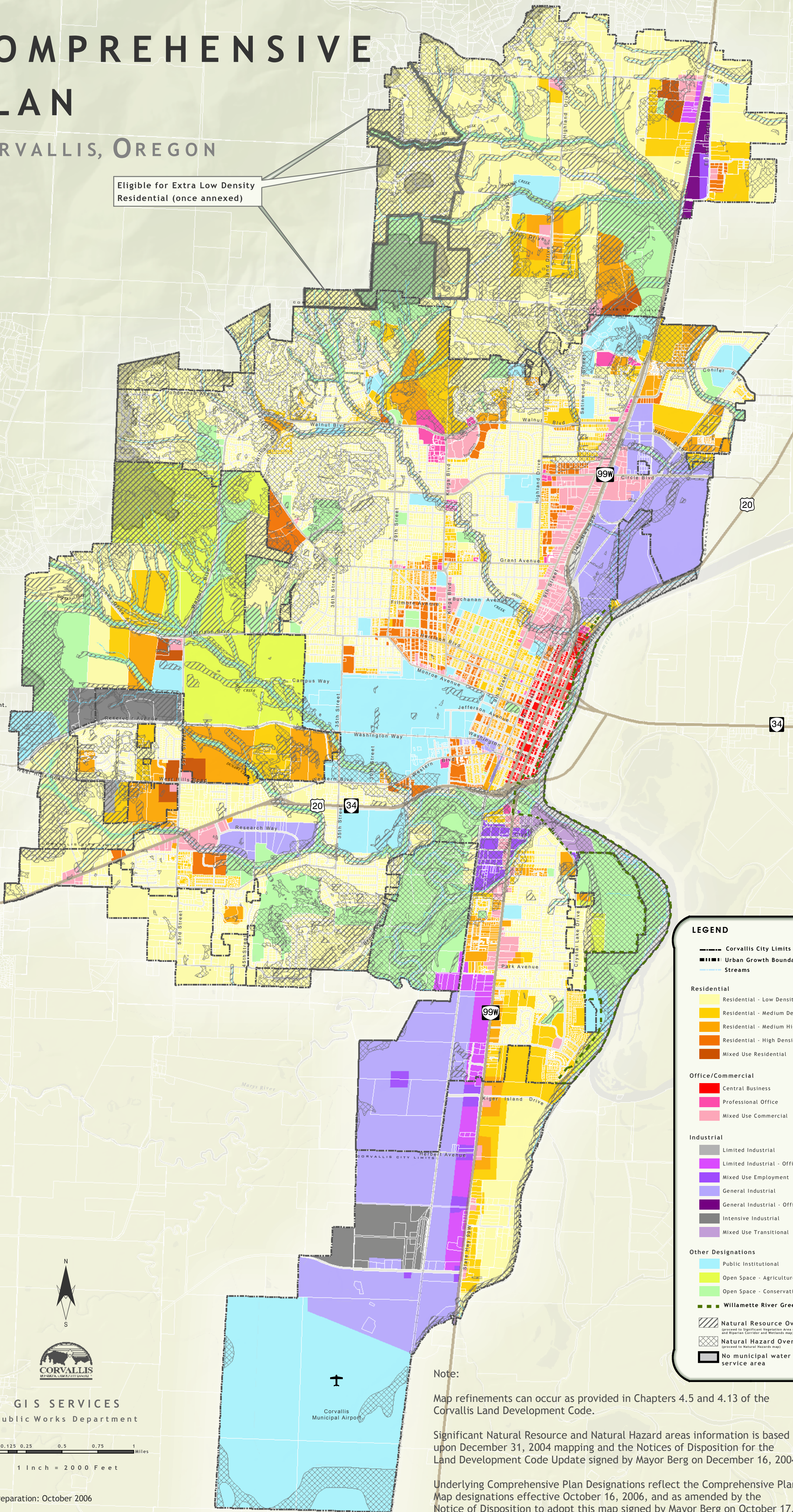


# COMPREHENSIVE PLAN

## CORVALLIS, OREGON

Eligible for Extra Low Density Residential (once annexed)

NOTE: Dunawi Creek, and the associated riparian corridor may be relocated through wetland (WC-SQU-W-13) to original alignment.



### LEGEND

- Corvallis City Limits
  - Urban Growth Boundary
  - Streams
- Residential**
- Residential - Low Density
  - Residential - Medium Density
  - Residential - Medium High Density
  - Residential - High Density
  - Mixed Use Residential
- Office/Commercial**
- Central Business
  - Professional Office
  - Mixed Use Commercial
- Industrial**
- Limited Industrial
  - Limited Industrial - Office
  - Mixed Use Employment
  - General Industrial
  - General Industrial - Office
  - Intensive Industrial
  - Mixed Use Transitional
- Other Designations**
- Public Institutional
  - Open Space - Agriculture
  - Open Space - Conservation
  - Willamette River Greenway
  - Natural Resource Overlay (based on Significant Vegetation Area map and Riparian Corridor and Wetlands map)
  - Natural Hazard Overlay (based on Natural Hazards map)
  - No municipal water service area

Note:

Map refinements can occur as provided in Chapters 4.5 and 4.13 of the Corvallis Land Development Code.

Significant Natural Resource and Natural Hazard areas information is based upon December 31, 2004 mapping and the Notices of Disposition for the Land Development Code Update signed by Mayor Berg on December 16, 2004.

Underlying Comprehensive Plan Designations reflect the Comprehensive Plan Map designations effective October 16, 2006, and as amended by the Notice of Disposition to adopt this map signed by Mayor Berg on October 17, 2006.



GIS SERVICES  
Public Works Department

0 0.125 0.25 0.5 0.75 1 Miles  
1 Inch = 2000 Feet

Date of preparation: October 2006