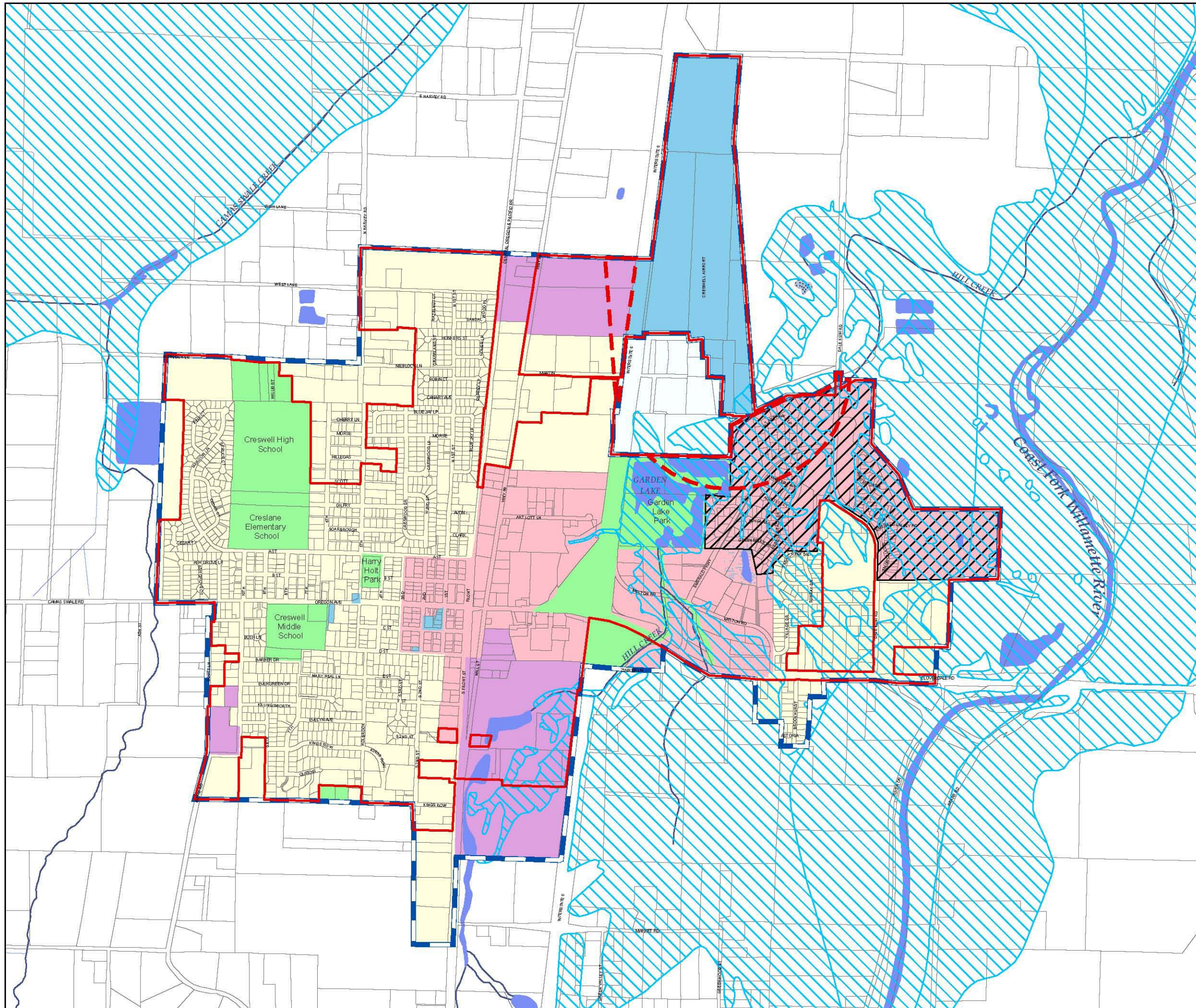


# Creswell Plan Designations



-  Residential
-  Commercial
-  Industrial
-  Park, Recreation, Open Space
-  Public Facilities / Government
-  Resort commercial Subzone
-  Flood Hazard Subzone
-  Airport Noise Impact Area
-  Tax Lot Boundaries
-  City Limits
-  Urban Growth Boundary



99 East Broadway, Suite 400  
 Eugene, Oregon 97401-3111  
[www.lcog.org](http://www.lcog.org)  
 Printing Date: January 4, 2006

