

# Supplemental

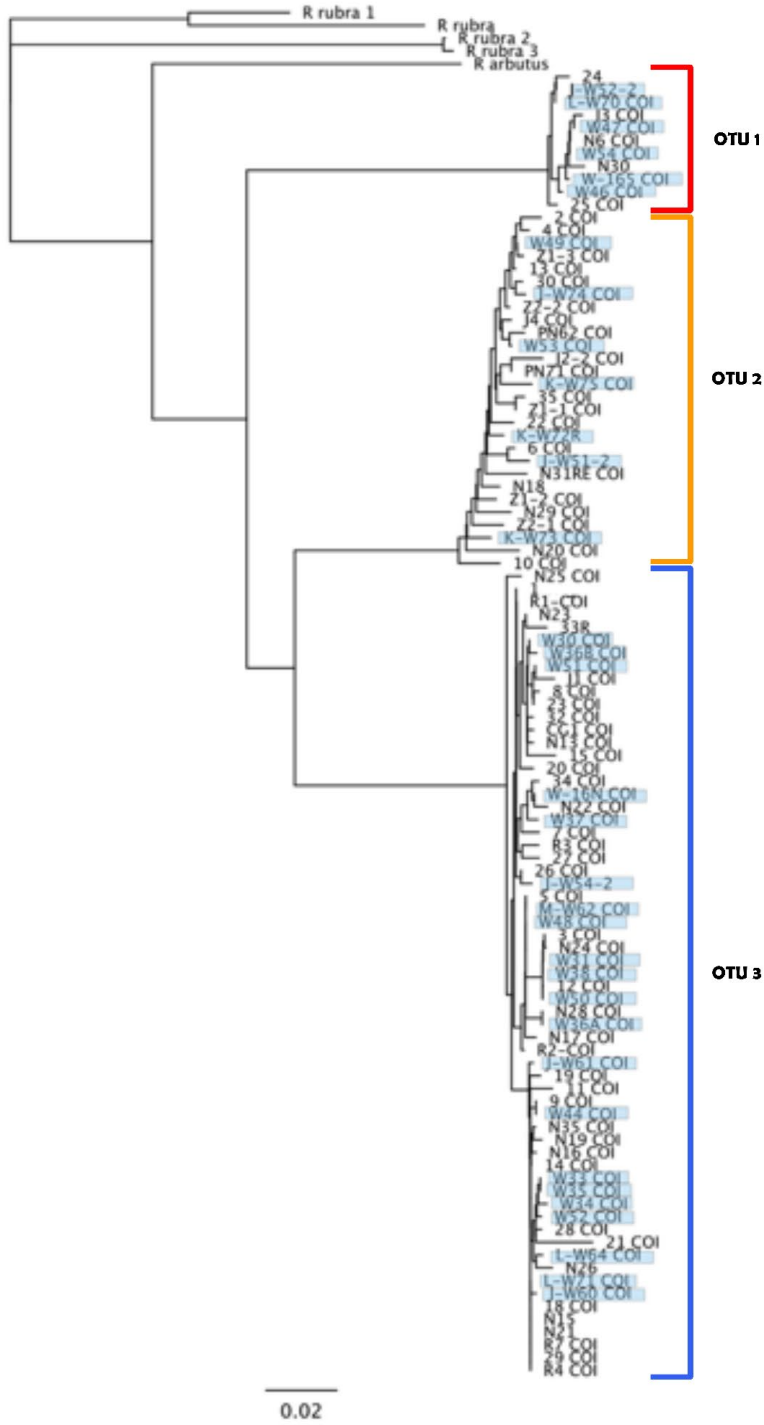


Figure S1 Phylogenetic Tree

Phylogenetic tree generated from COI region of *Rostanga pulchra* barcoded for the purpose of this study (highlighted), and others barcoded by R. Emlet, S. Fox, and Y. Moreira-Andrade as a part of ongoing research. *Rostanga rubra* and *Rostanga arbutus* used as an out group. OTU 1, OTU 2, and OTU 3 shown in brackets. Approximate divergence between OTU 1 and 2 is 13%, OTU 1 and 3 is 14%, and OTU 2 and 3 is 11%.

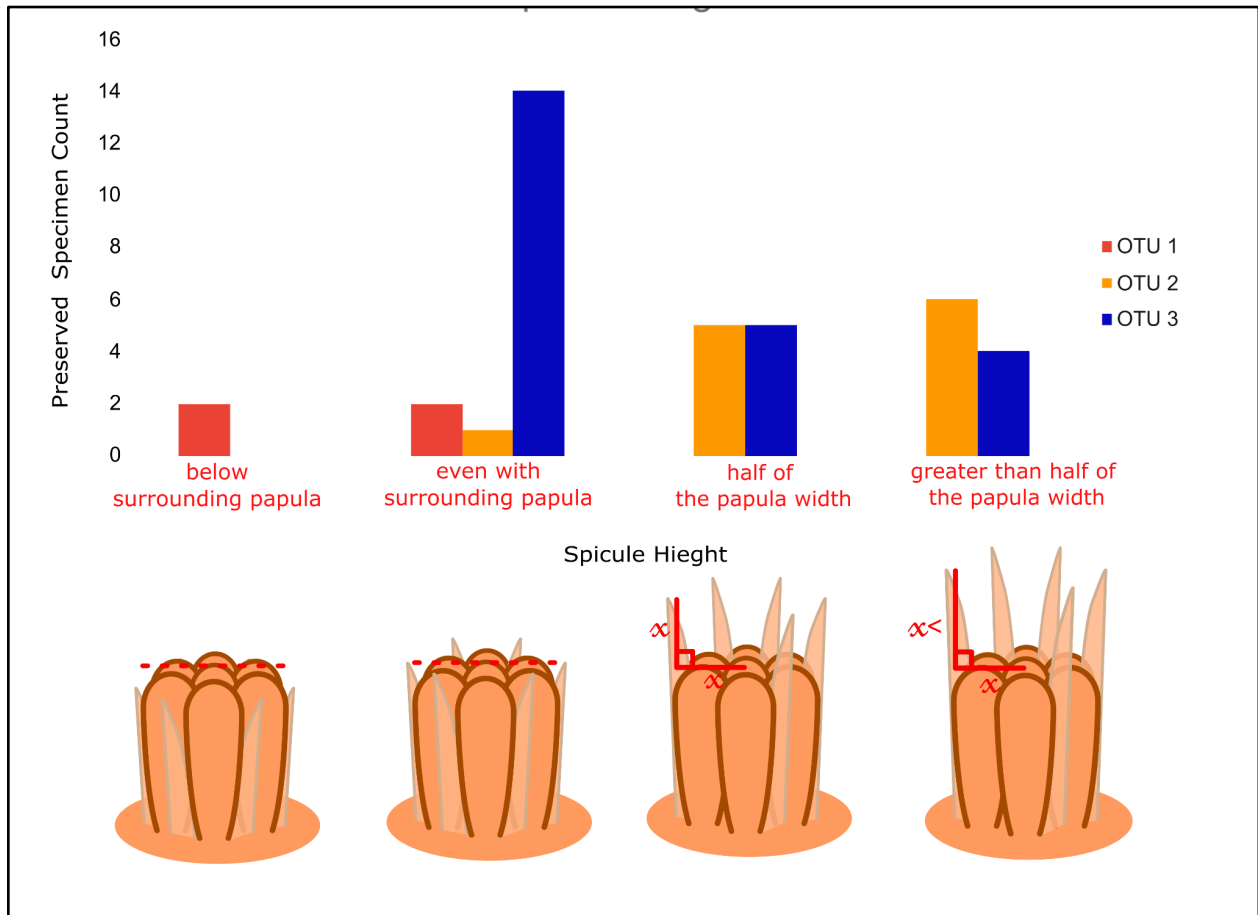


Figure S2: Preserved Specimen Relative Spicule Height of OTU 1, OTU 2, and OTU 3

Extended sampling of preserved specimens from unpublished work of R. Emlet, S. Fox, and Y. Moreira-Andrade. Bar graph of showing the height of spicules relative to the width of the papula of the caryophyllidia (three OTU 1, eleven OTU 2, and 22 OTU 3 specimens), specimen designation based on the most common answer from 10 randomly selected caryophyllidia. Variance was recorded as spicules lying below the surrounding papula, being even with the surrounding papula, being half the papula width, or being greater than half the papula width.

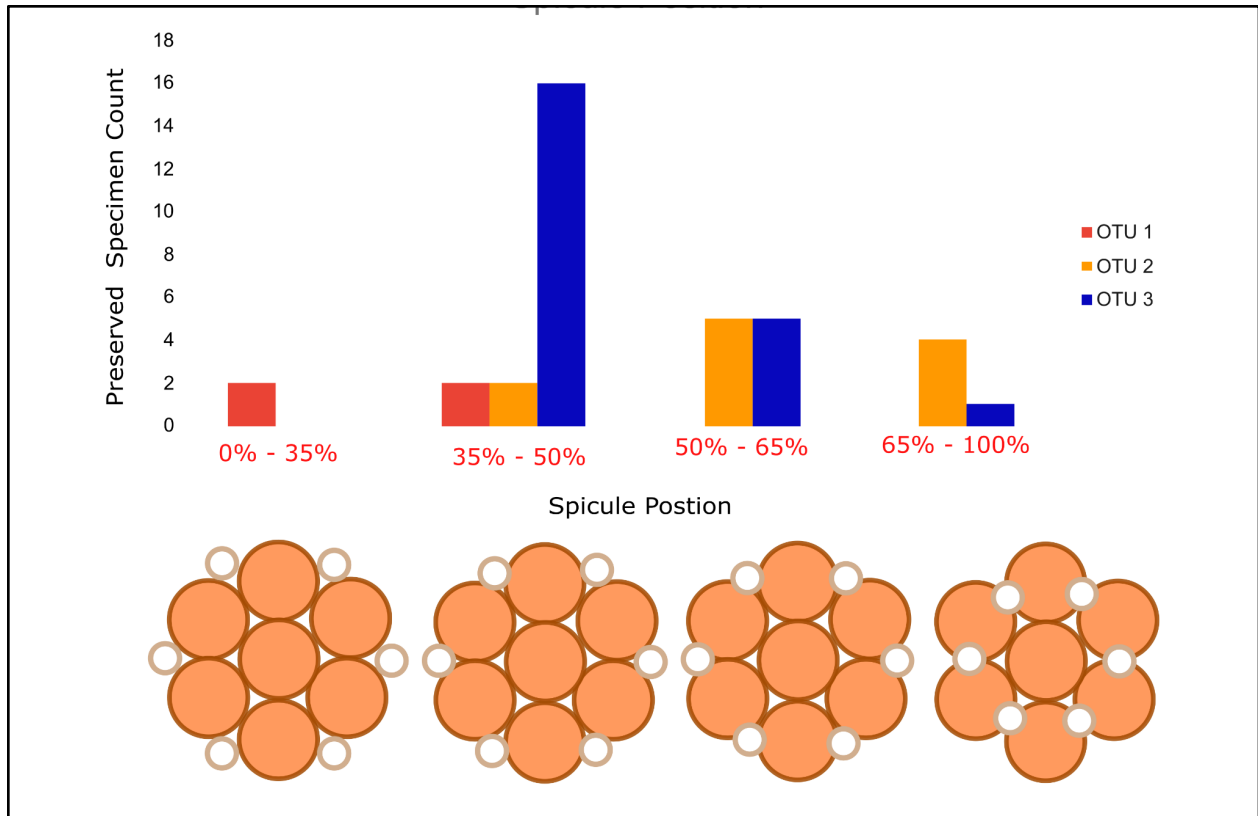


Figure S3: Preserved Specimen of OTU 1, OTU 2, and OTU 3

Extended sampling of preserved specimens from unpublished work of R. Emlet, S. Fox, and Y. Moreira-Andrade. Bar graph showing the distribution of spicule positions for the three OTUs (three OTU 1, eleven OTU 2, and 22 OTU 3 specimens). Specimen designation based on the most common answer from 10 randomly selected caryophyllidia. Variance was recorded as spicule circumference in contact with surrounding papula, with categories of 0%-35%, 35%-50%, 50%-65%, and 65%-100%.

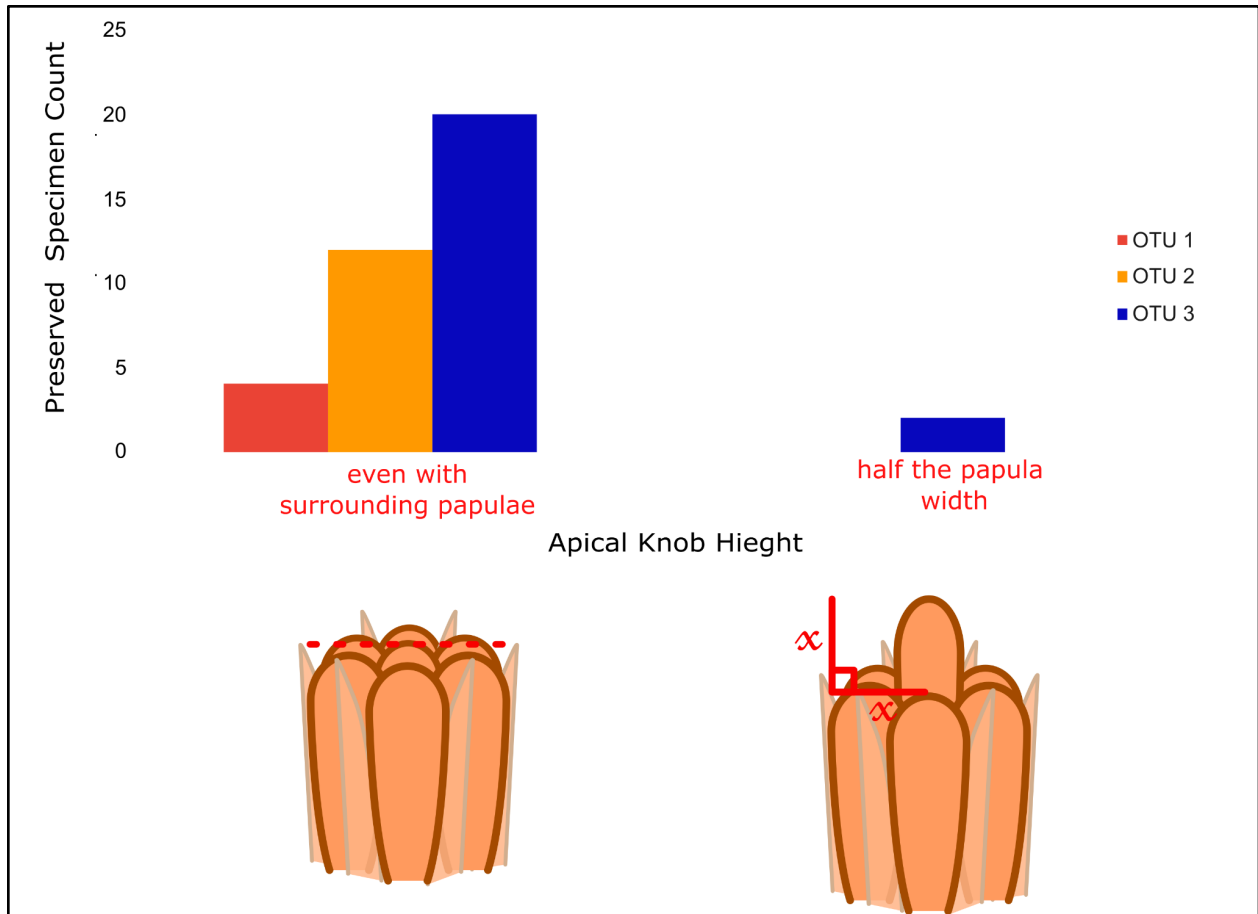


Figure S4: Preserved Specimen Apical Knob Height of Preserved OTU 1, OTU 2, and OTU 3

Extended sampling of preserved specimens from unpublished work of R. Emlet, S. Fox, and Y. Moreira-Andrade. Bar graph of height of the apical knobs relative to the width of the papulae of the caryophyllidium (three OTU 1, eleven OTU 2, and 22 OTU 3 specimens). Specimen designation based on the most common answer 10 randomly selected caryophyllidia. Variance was recorded as being even with the surrounding papula, being half the papula width.