



Capturing Film with Natural Light

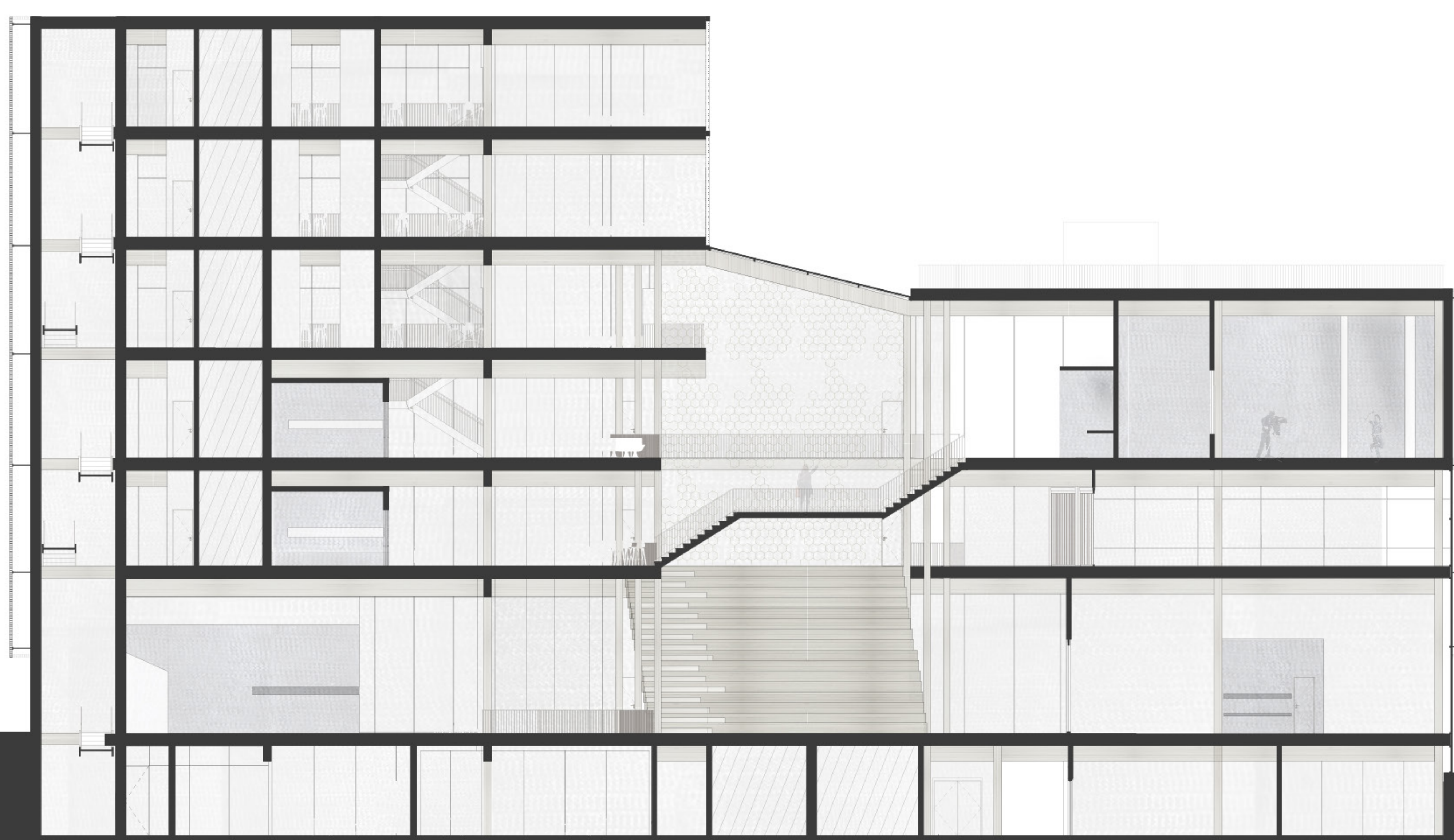
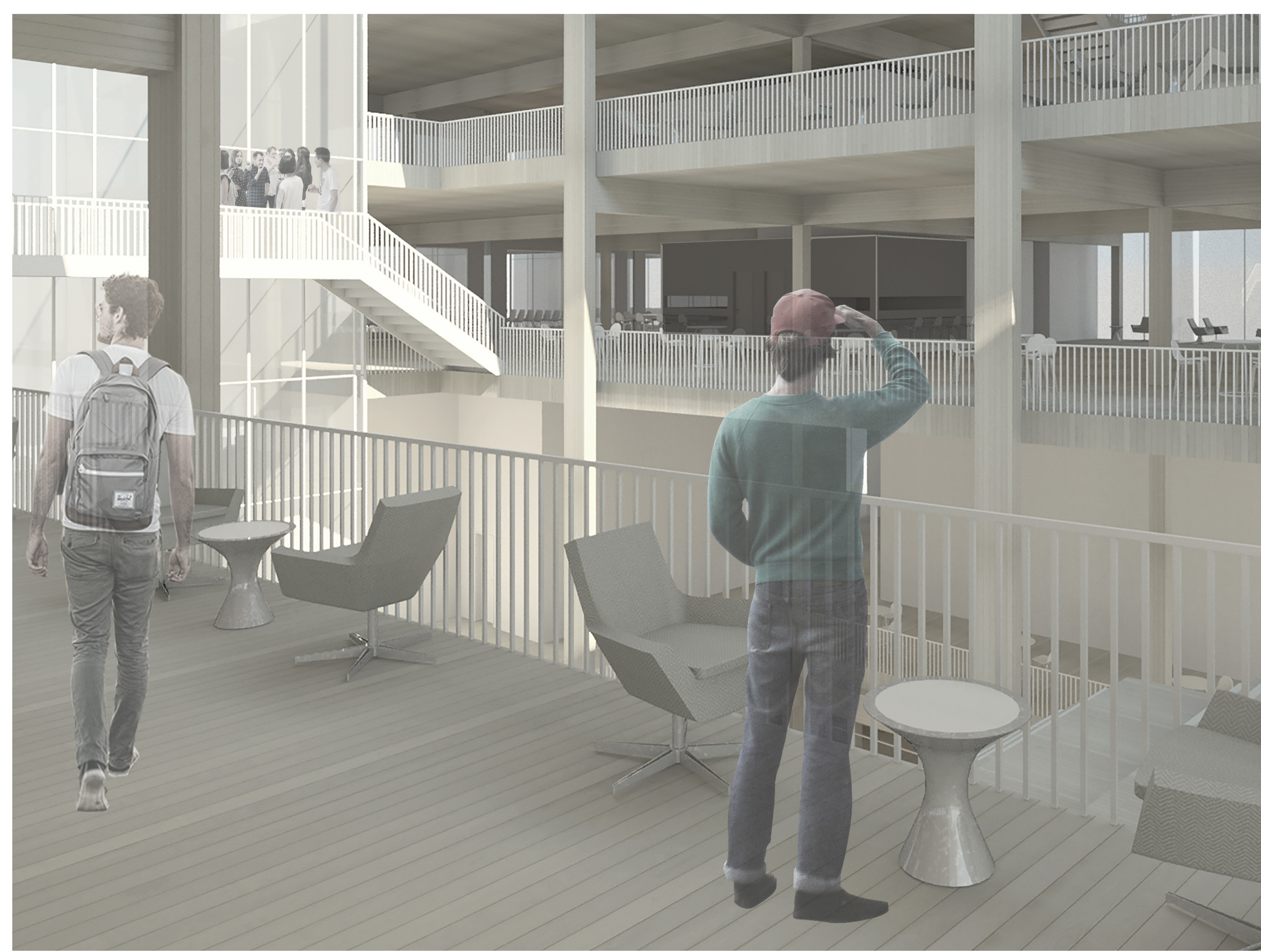
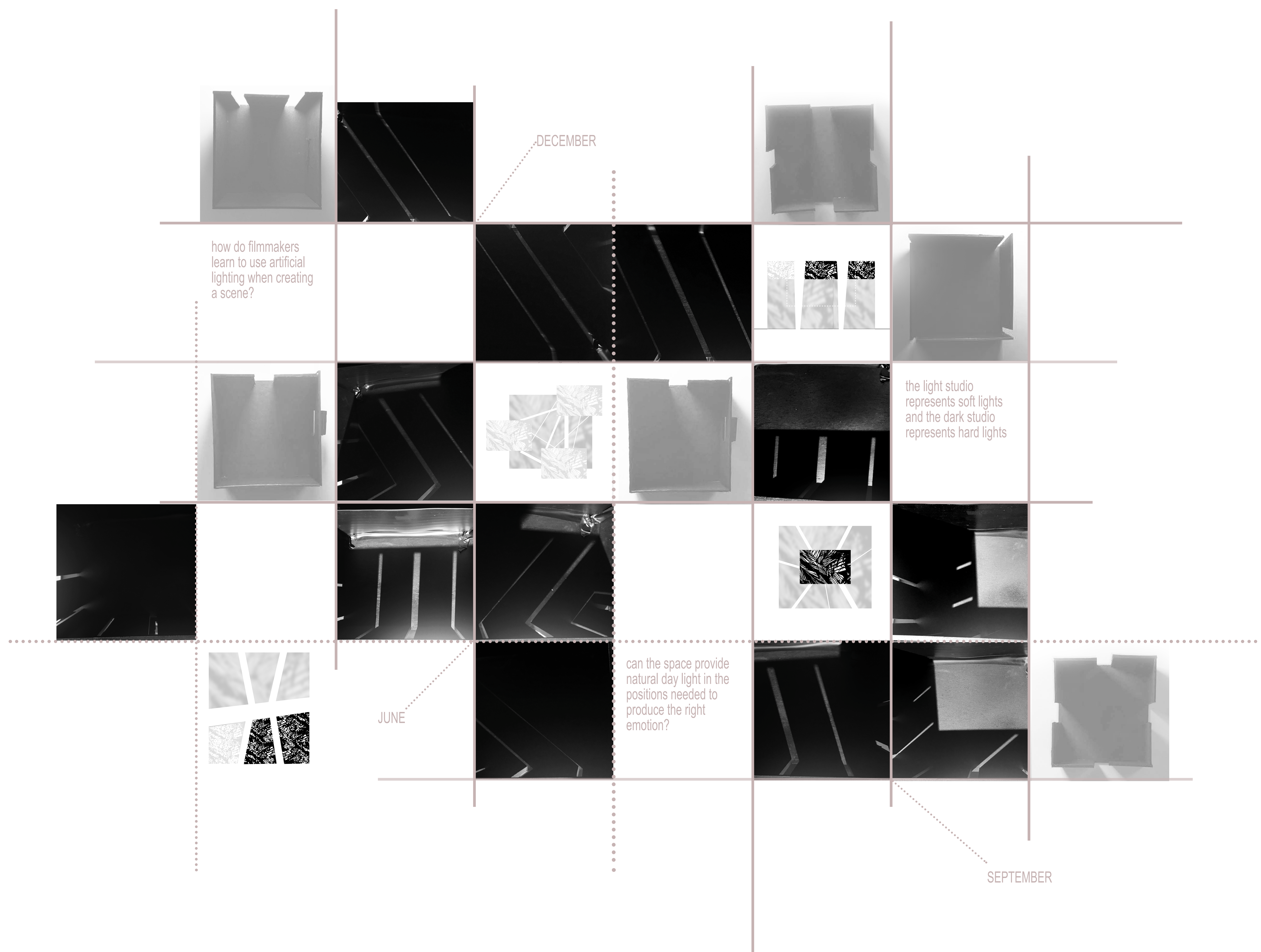
The study of how naturally lit dark and light spaces can be created to produce film | Institute of the Moving Image | Taylor Fieroh



EAST WEST SECTION

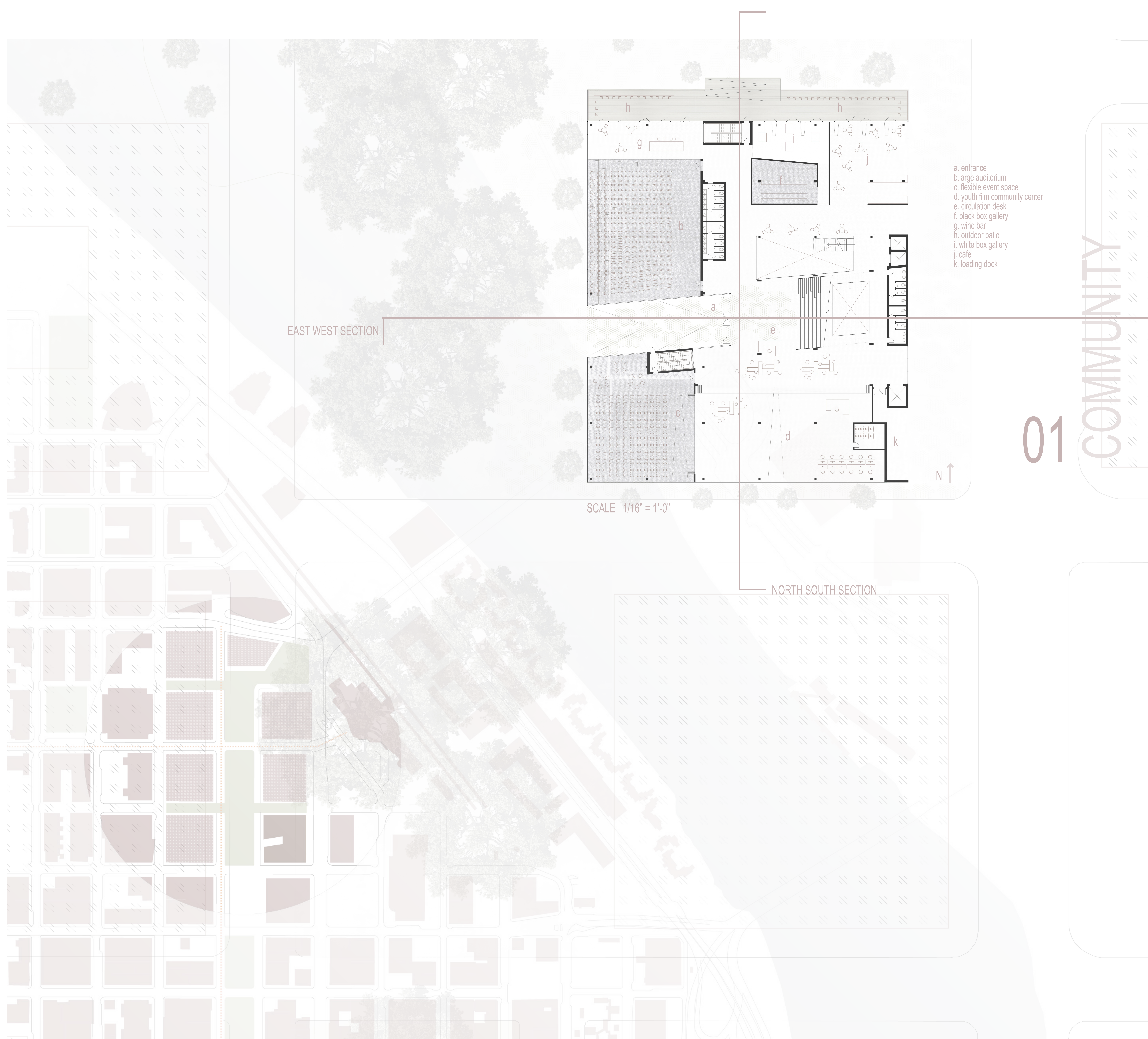
SCALE | 1/8" = 1'-0"

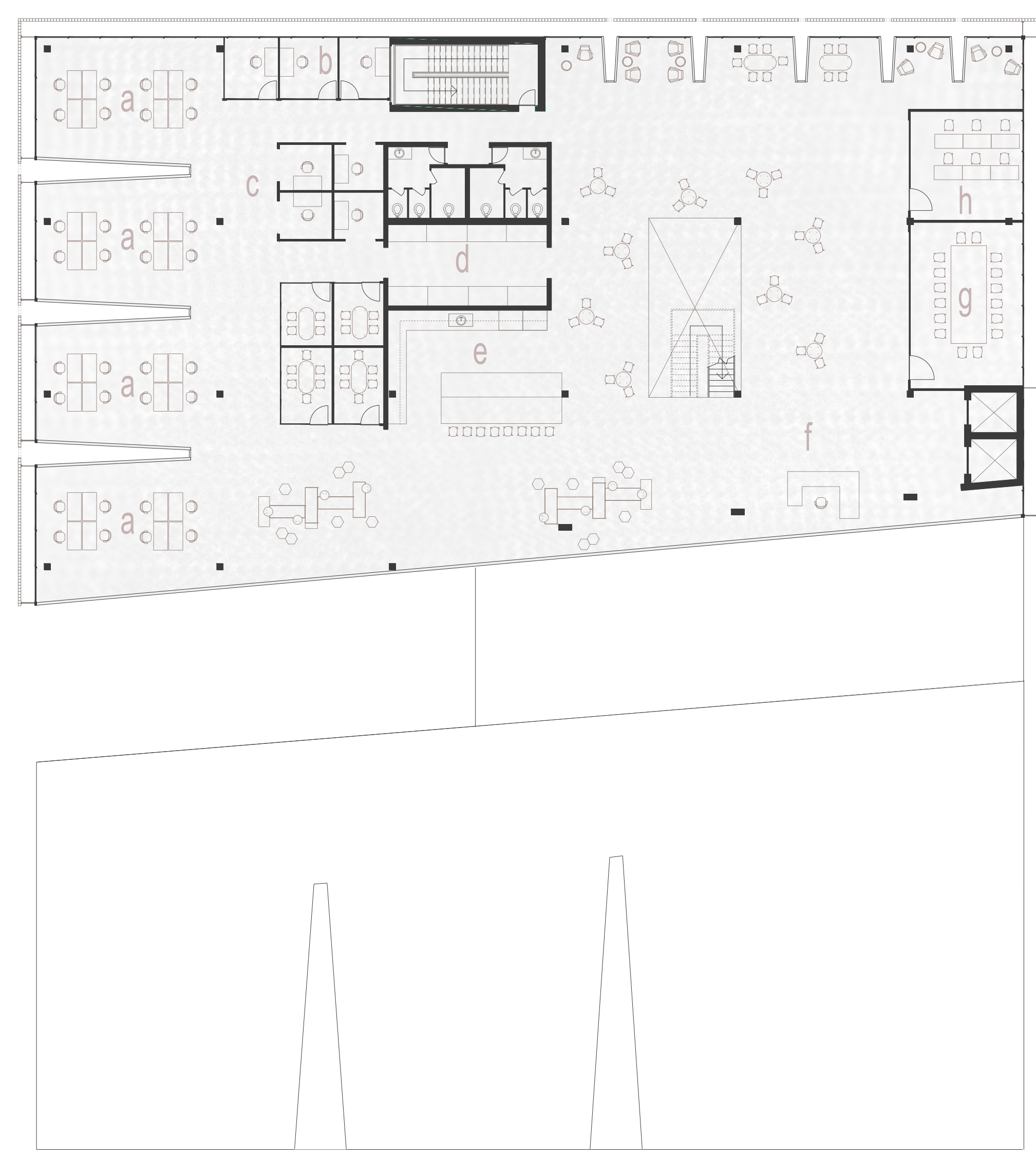




NORTH SOUTH SECTION

SCALE | 1/8" = 1'-0"

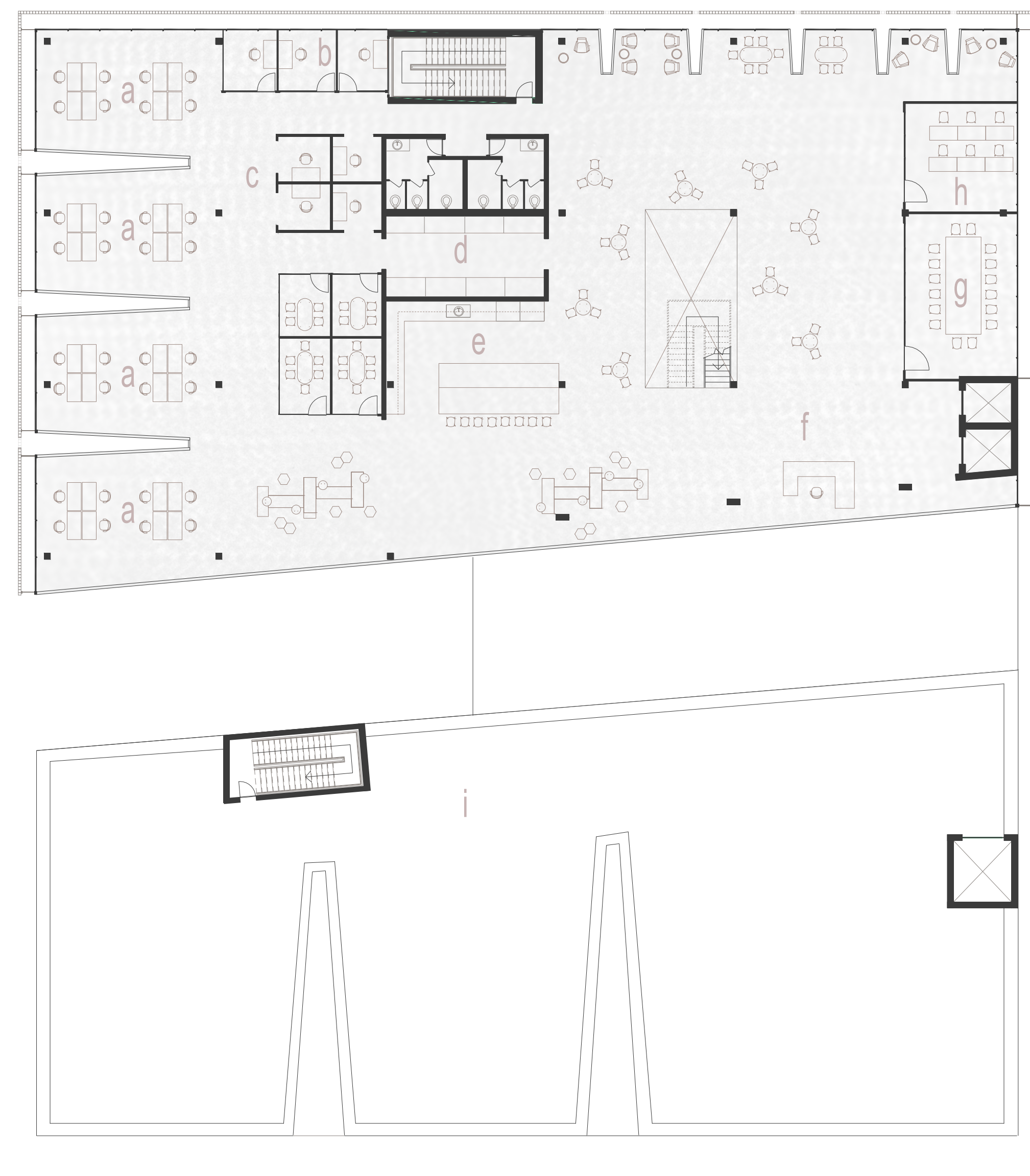




- a. cinema work stations
- b. private office
- c. private nooks
- d. workroom
- e. kitchen
- f. lobby
- g. conference room
- h. training room

SCALE | 1/16" = 1'-0"

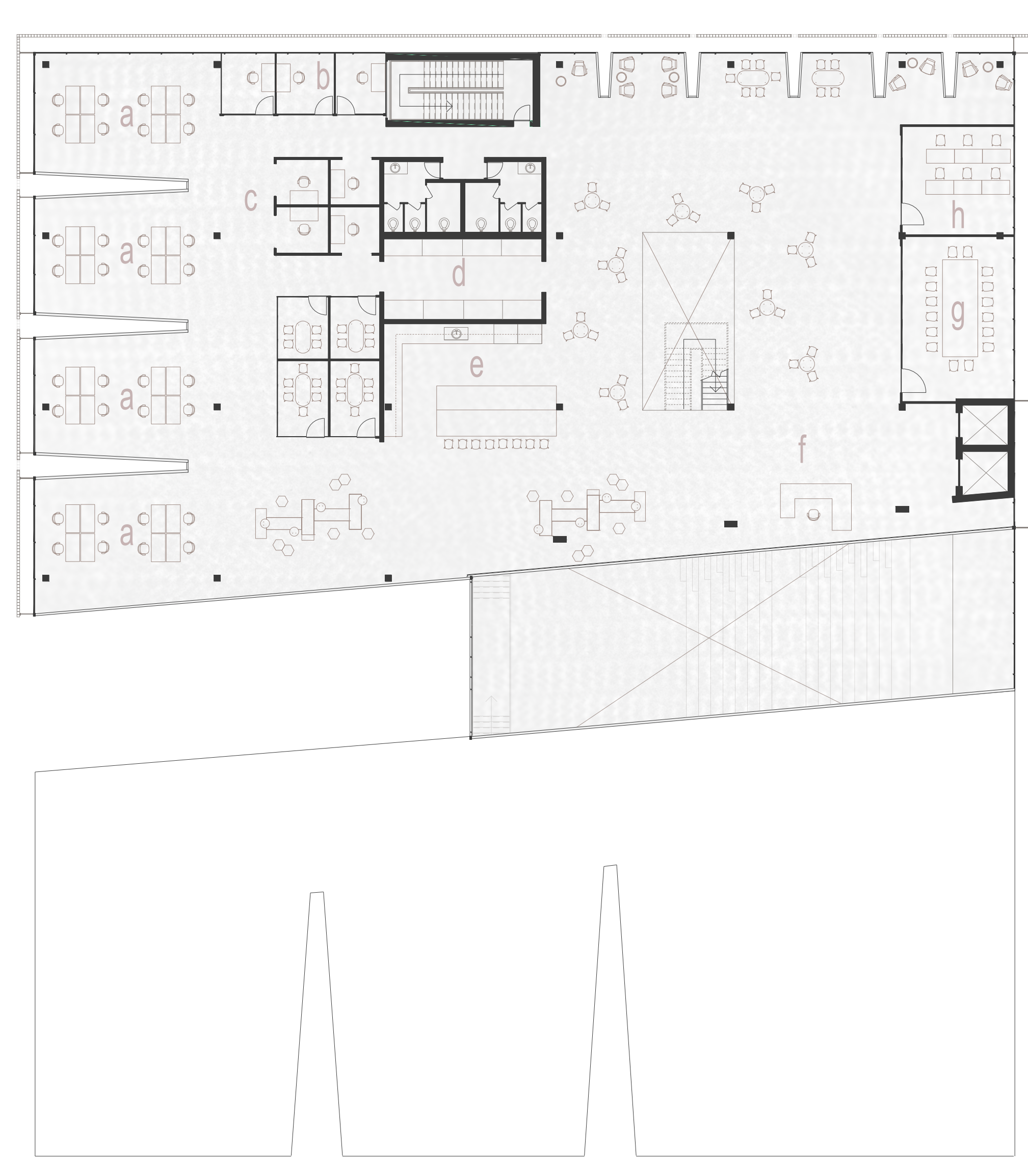
06 CINEMA WORKPLACE



- a. cinema work stations
- b. private office
- c. private nooks
- d. workroom
- e. kitchen
- f. lobby
- g. conference room
- h. training room
- i. accessible outdoor filming studio

SCALE | 1/16" = 1'-0"

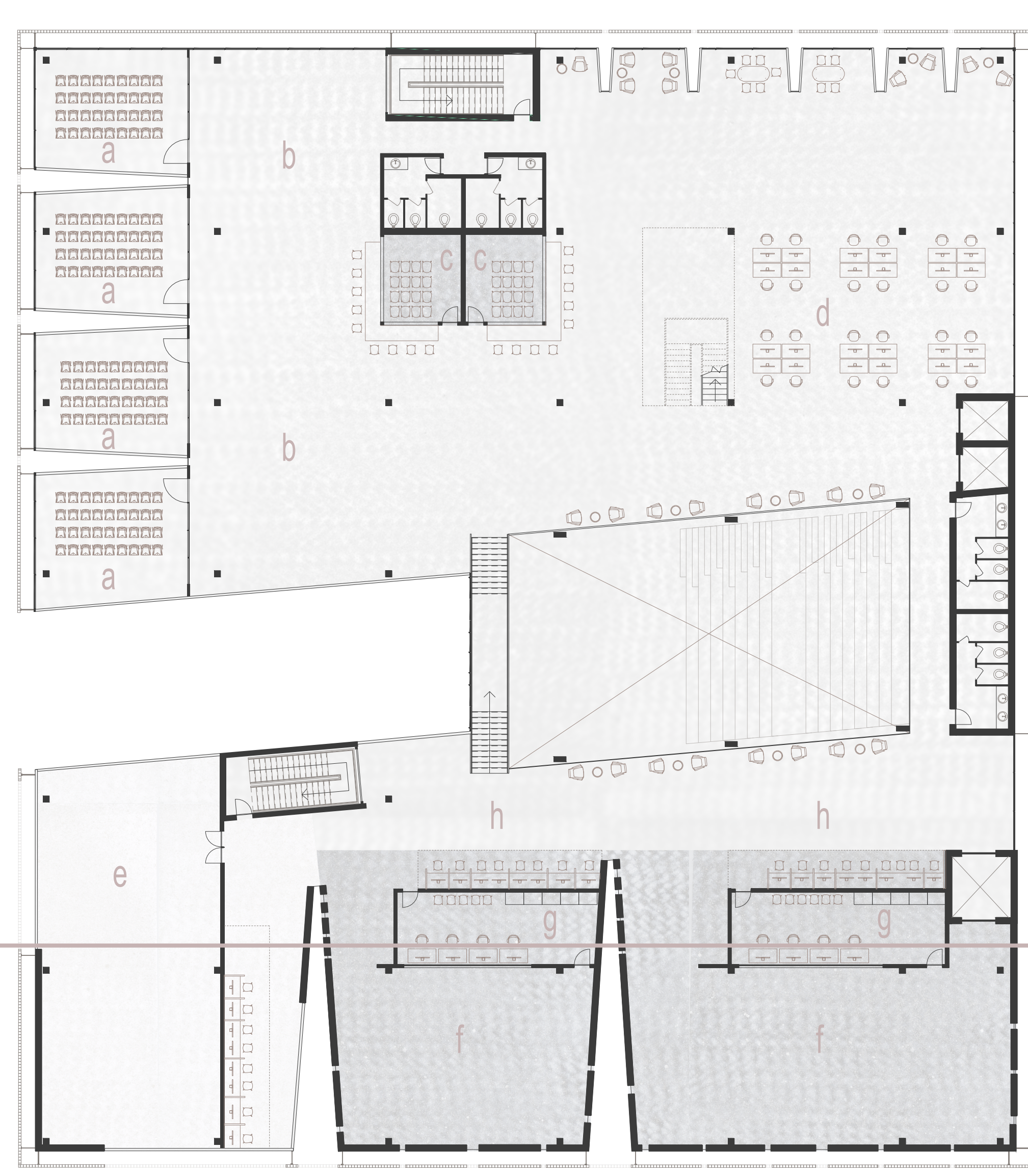
05 CINEMA WORKPLACE



- a. faculty work stations
- b. private office
- c. private nooks
- d. workroom
- e. kitchen
- f. lobby
- g. conference room
- h. training room

SCALE | 1/16" = 1'-0"

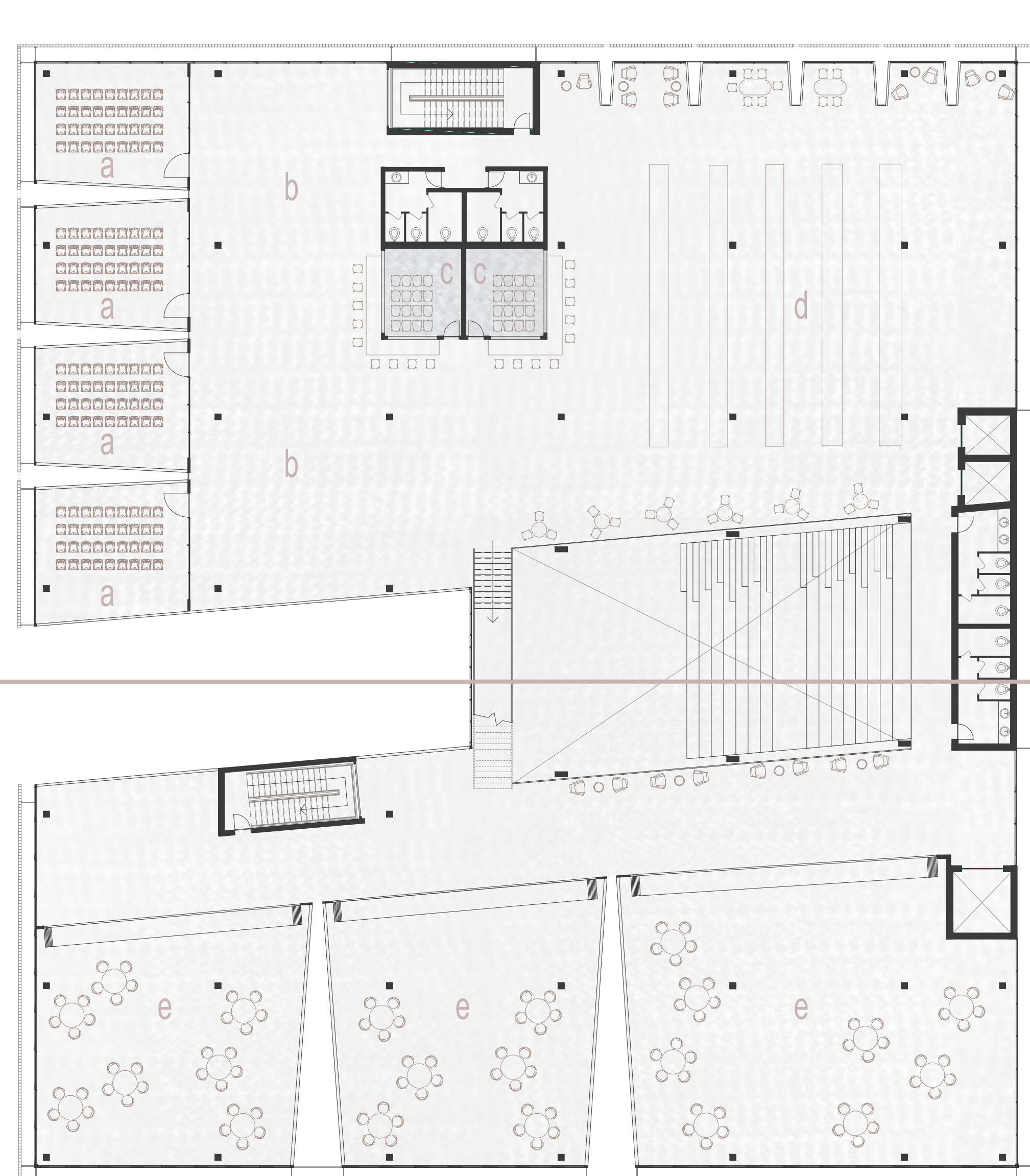
04 FACULTY



- a. seminar room
- b. learning commons
- c. small screening room
- d. tech stations
- e. light production studio
- f. dark production studio
- g. filming support
- h. post production and editing

SCALE | 1/16" = 1'-0"

03 PRODUCE



- a. seminar room
- b. learning commons
- c. small screening room
- d. library
- e. learning studio

SCALE | 1/16" = 1'-0"

02 LEARN



- a. maker space
- b. costume shop
- c. food lab
- d. stop motion lab
- e. metal shop
- f. set design lab
- g. woodshop
- h. digital fab lab
- i. storage

SCALE | 1/16" = 1'-0"

MAKE

SECTION MODEL