

Deschutes River Trail Action Plan

for

**The Bend Metro Park and Recreation District
The City of Bend
The Bend Park and Recreation Foundation**

September 2002

J. T. ATKINS  COMPANY PC

Acknowledgements

The project team would like to thank the following Steering Committee members for their participation, ideas and comments.

Deschutes River Trail Action Plan - Steering Committee

Mary Campbell
Brad Chalfant
Jim Clinton
Diane Crampton
Jackie French
Paul Hammerquist
Jan Houck
Ryan Huston
Doug Knight
Darcy McNamara
Donna Owens
Pat Roden
Karen Stanard
Kirk Schueler
Anne Wheeler
Ruth Williamson
Eileen Woodward

Bend Metro Park and Recreation District

Carrie Ward
Paul Stell
Bruce Ronning
John Simpson

City Of Bend

Rick Root

J.T. Atkins & Company PC

Tom Atkins

Contents

Acknowledgements.....	ii
Contents	iii
Deschutes River Trail - Action Plan	1
The River and River Trail –Critical Community Resources	1
Plan Purpose	1
The Trail Action Plan	1
Landscape Character.....	2
Other Landscape Units	3
Trail User Groups	3
Trail User Safety.....	4
Accessibility Considerations for Trail Users.....	5
Key Principles for Trail Siting and Development	5
Trail Development Program	5
Project Priority Criteria	6
Project Area Proposals for the Annual Plan - Fiscal Year 2002 - 2003	7
Trail Project Descriptions.....	9
Appendix A. 2002 – 2003 Action Plan Projects	A-1
Appendix B. Action Plan Projects	B-1

Deschutes River Trail - Action Plan

The River and River Trail –Critical Community Resources

The Deschutes River flows through the heart of Bend and is at the core of our sense of place and community. It provides diverse opportunities for recreation, relaxation, picnicking, and public gatherings along its course. People strolling along the trails and walks that parallel the river are immersed in the solitude and abundant wildlife of the natural landscapes. Visitors also enjoy the series of parks located along the river, many of which are connected by a system of trails and pedestrian bridges. Others experience the river from a canoe or kayak, using the river itself as a water trail.

Plan Purpose

The Deschutes River Trail Action Plan (Action Plan) builds on the information developed during the Bend Riverway planning process and provides an additional level of detail for a range of projects. The information presented in this report and the appendixes positions projects for use of funding sources including grants, CIPs, general funds, donations and in-kind contributions. In general, each project will require more detailed design and construction document development prior to construction.

The Trail Action Plan

Developed through a series of meetings with the project team (including Bend Metro Park and Recreation District and City of Bend staff) and the project steering committee, the Action Plan builds on the work done during the earlier Bend Riverway planning effort. It also incorporates the existing system of parks and trails, which forms a green infrastructure that ties the city together. The Action Plan identifies a series of projects to enhance that infrastructure and provides a “greenprint” for completion of the trail. The Action Plan also proposes opportunities to enhance the river itself as a trail experience. Action Plan trail elements and the overall River Trail alignment were first presented during a public open house held in April 2002.

There are 9.6 miles of existing improved trails that parallel the river. The study area for the Action Plan starts just south of the southern boundary of the Urban Growth Boundary. The northern boundary of the study area is Tumalo State Park. The river length within the area is 14 miles. The Action Plan proposes to construct 10 miles of trail improvements, pedestrian and bicycle bridges and several boat landings. The Action Plan lists a series of prioritized projects in the form of a project catalog that includes the following:

- Prioritized list of projects
- Individual project information
 - Site description
 - Project description

- Land ownership character
 - List of potential partners
- Preliminary work required
 - Preliminary trail alignment
 - Definition of trail amenities
 - Property owner discussions if needed
- Construction project information
 - Program (what is to be constructed)
 - Conceptual level construction budget
 - Construction time line
- Project implementation steps
 - Funding sources
 - Project partners
 - Project schedule
- Project lead and support responsibility
 - Tasks, responsibilities and schedule
- Project management and maintenance program

Landscape Character

The character of the river and the adjacent landscape changes as the river flows through Bend. This character includes natural landscapes like those at the north and south ends of the project area, sparsely developed areas, denser urban areas, and the typical lawn and tree landscapes of the developed urban parks on Park District land. River Trail elements will be designed to fit the character of the surrounding landscape and to respect the sensitive nature of the river and the riparian environments along the river.

The surrounding character of each river reach will define the general design of the trail and associated trail elements. The landscape character definitions are presented below:

- Natural
 - A landscape dominated by mostly undisturbed nature and wildlife habitat. Within these areas trail users can experience solitude and respite from the daily pressures of urban life.

 - The river has natural banks and flat stretches and white water runs within this landscape.

- Semi-Natural
 - A transitional landscape between Natural and Urban landscapes. Although the character consists of a mix of natural features, dispersed residential development, and other built elements, the landscape is more natural than cultural with wildlife habitat being an important component. Several parks, including Tumalo State Park, Sawyer Park, and the future Log Deck Park, are within this landscape.

The river edges are generally in a natural condition within this area. In some cases the riverbanks and flow patterns are modified by built elements.

- **Urban**
This zone consists of primarily developed areas where buildings and other constructed elements dominate the scene. The landscape is generally composed of lawns and trees. Trail elements within this area should normally be "hard" in character.

Within the Urban area, the river is contained within hard edges and the flow pattern is controlled by a series of dams. In a few short stretches the river's edge and flow patterns remain natural.

- **Urban Parks**
Improved parks within the urban area include maintained lawns, stands of trees and architectural elements. The developed parklands along the river primarily consist of passive recreation areas with both hard and soft elements.

Other Landscape Units

- **Waterway Overlay Zone**
The City of Bend has defined the Deschutes River and Tumalo Creek stream corridors within Bend's urban growth boundary as valuable recreational, scenic and natural resources for the community. The Waterway Overlay Zone (WOZ) is inclusive of all special purpose provisions that apply to these river and stream corridors. The WOZ is intended to conserve and enhance the natural resource values of areas along the Deschutes River and Tumalo Creek.
- **Deschutes River Riparian Wetlands**
The City of Bend inventoried and evaluated wetlands within Bend using the OFWAM methodology. The only wetlands meeting the definition of significance as Goal 5 resources are within the Deschutes River riparian corridor. As noted on the City's Goal 5 report (*City of Bend Periodic Review – Goal 5 Inventory and Analysis*), the entire riparian corridor is considered a single wetland system for the purpose of the Local Wetland Inventory. The corridor includes a number of important wetland units within the riparian area boundary. The corridor is measured from and includes the upland edge of these wetlands.

The inventory identified 10 wetland units along the Deschutes River within the Action Plan study area. These areas are illustrated on the Action Plan project maps.

Trail User Groups

The Action Plan planning process identified a wide range of trail users. This will assist project planners in providing trail facilities to match the needs of the trail users.

- Pedestrians – commuters and recreators of all ages
- Runners
- Bicyclists
- Wildlife viewers (individuals and groups)
- Dog walkers
- Canoeists / kayakers
- In-line skaters / skate boarders
- Outdoor / environmental education (students and educators)
- Disabled trail users
- Maintenance and emergency access
 - Irrigation companies service access
 - Trail maintenance
 - Emergency access
- Swimmers
- Picnickers
- Anglers
- Special events participants

Trail User Safety

Trail user safety is a critical trail planning and design component. There are many points along the trail alignment that will require special consideration. These areas include bridge under crossings, street crossings, boat landings and continuity of trail alignment and tread.

Bridge under crossings will require special consideration regarding trail user visibility, security, and approach sight distances. In many cases cyclists should dismount and walk their bicycles at bridge under crossings to reduce the risk of pedestrian - cyclist conflicts.

The intersection points for the trail and streets present potential safety hazards for trail users. It is critical that trail designers work closely with the City of Bend - Traffic Safety Committee in developing safe trail / street crossings. Each crossing point should be considered on a case by case basis.

The Action Plan presents a series of boat landings. Boat landings present another safety challenge for the river trail user. In some cases these landings are just up-river from dams that occur along this stretch of river. The boat landings must be located, designed and signed so that the beginner canoeist or kayaker can easily and safely get their boat in and out of the water.

Trail surface and alignment continuity is another design safety issue. It is important that any changes in surface and trail alignment be identified so that the trail user will not be surprised. These conditions include changes in surface material, steep slopes, and tight turns.

Accessibility Considerations for Trail Users

An important goal for development of the Deschutes River Trail is to provide a diverse range of trail experiences for all trail users. However, the steep and rugged terrain in a number of sections of the trail alignment will make it difficult to accommodate the full range of users within those sections. It is important that the trail be accessible to all users wherever possible. Trailhead parking areas that provide access to accessible trail sections should comply with ADA standards. On these accessible trail sections users will have opportunities to experience the full range of landscape character, from being immersed in the natural environment to enjoying the more open park like setting.

Key Principles for Trail Siting and Development

The following guiding principles will be used in trail siting and development.

- Protect private property rights
- Trail to respect sensitive environments and protect natural and cultural resources
- Trail character should fit that of the surrounding landscape
- Consider the river as a trail and incorporate needed boat landings and portages
- Seek opportunities to “soften” the river’s edge
- Trail will link as many parks and public facilities as possible
 - Provide trail connections to other existing and planned trails
 - Provide trail links to river access points and parking
 - Provide trail links to public transportation routes and bus stops
- The main focus of the trail is on public lands
- Alternative trail uses to be accommodated in a reasonable and suitable manner
- Manage user groups in sensitive areas
- Design and manage the trail for conflicting uses
- Consider user accessibility, visibility, security and safety in trail design
- Take advantage of interpretive opportunities
- Take advantage of developer agreement opportunities
- Trail close to river where appropriate and feasible

Trail Development Program

A wide range of components must be considered when developing the trail. These include the trail “tread” or the surface of the trail, the trail corridor (the width of clearing for the trail), trail users (pedestrians, cyclists, etc.), and the type and location of trail amenities (benches, viewpoints, litter baskets, etc.). All trail elements should be designed with consideration given to the type and level of use anticipated.–Existing planning documents such as the Bend Urban Area -Trails System Surface Plan and the Park and Recreation District’s Long Range Plan should also be considered.

The character of the trail and trail amenities should fit within the landscape character of the area in which the trail section is located. Thus, those trail elements within natural

areas will be natural in character. The trail tread will typically be native earth and trail amenities will be natural and rustic in character. In the semi-natural area the trail tread will generally be improved, but “soft” in character. The materials will typically be crushed rock and or wood chips. Trail amenities may have a rustic character. In the urban areas the trail may be a “hard” surface and the trail amenities will be more urban in character.

Trail development may include the following components and elements:

- Trail construction (natural, soft and hard surface)
- Boardwalks
- Bridges - pedestrian and bike
- Vehicle bridge under-crossings (Colorado, Newport and Portland)
- Alternative trail alignments for cyclists where necessary
- Trailhead parking and restrooms at existing and future parks
- Sidewalk connections
- Street crosswalks
- Boat landings and portage routes
- Trail identification – markers, signs and bollards
 - Directional / Reassurance
 - Interpretative
 - Trail mile markers (for runners and hikers); markers could be tied to river mile markers
- Vehicle controls (bollards and gates)
- Benches and picnic tables
- Dog rest stops
- Litter baskets
- Wildlife viewing areas
- Interpretative / teaching “gardens” (wildlife, native plants, water-wise)
- Interpretative pullouts / rest stations off of the main traffic flow along the trail
- Trail edge vegetation restoration, bank reconstruction and habitat enhancement
- Public art
- Drainage management, structures and biofiltration
- Retaining walls
- Trail map / brochure

Project Priority Criteria

The Action Plan presents a prioritized list of trail projects. The project team developed the list using the criteria presented below. Although it will be important to follow the prioritized list, the order of priorities may change as opportunities arise or projects on adjacent property develop. The priority criteria are:

1. Opportunities and Opportunities lost
 - Opportunity for trail access / acquisition
 - Area undergoing pressure / potential loss of trail opportunity
 - Funding opportunity / partnership opportunity
2. Addresses problem area
 - Safety
 - Security
 - Environmental condition
3. Associated with other District or City of Bend projects
4. Completes a missing link that connects existing trail segments and parks
5. Ease of trail implementation
6. Community support for trail segment (connections and destinations)
7. Relative level of use (user type and numbers)

Project Area Proposals for the Annual Plan - Fiscal Year 2002 - 2003

The following list of projects selected for 2002-03 was defined by analyzing the full list of Action Plan projects using the criteria presented above. This list is the first increment of projects to be implemented. The list is presented to take advantage of opportunities as they become available. The list also includes projects that the District should monitor as well as related city sidewalk projects.

Right-of-Way Acquisition

- Commerce Ave. connection to McKay Park via city right of way
Priority Criteria: 1, 4, 5, 6, & 7
- Miller Property
Priority Criteria: 1, 3, 4, 6, & 7
- Elks Trail – Bend Development Board
Priority Criteria: 1, 3, 4, 5, 6 & 7
- Pacificorp (Bend Hydro Project)
Priority Criteria: 1, 3, 4, 5, 6 & 7
- Mirror Pond Strollway to Newport Bridge (6 parcels just up river from the Newport Ave. Bridge)
Priority Criteria: 1, 2, 3, 4, 5, 6 & 7
- Lilleoran Property
Priority Criteria: 1, 2, 3, 4, 5, 6 & 7
- Connection to the river from Tumalo Irrigation District right of way at Putnam across Brooks Resources (Awbrey Meadows).
Priority Criteria: 1, 3, 4, 5, 6 & 7
- Coats property between Brooks Resources property and Tumalo State Park.
Priority Criteria: 1, 2, 3, 4, 5, 6 & 7
- Tumalo Irrigation District
Easement across TID ownership. Formalize (record) existing casual agreement.
Priority Criteria: 3, 4, 5, 6 & 7

Joint operating agreement. Formalize existing agreement using COID agreement as a template

Priority Criteria: 3, 4, 5, 6 & 7

- Brooks 9-acre parcel across from Log Deck

Design and Construction Projects

Full descriptions of the following design and construction projects selected for the 2002-03 Action Plan are attached as Appendix A. A complete listing of all Action Plan projects is attached as Appendix B.

- New Segments of the River Trail – East end of Awbrey Meadow to Putnam Rd.
Fine-tune trail surface
Priority Criteria: 1, 2, 4, 5, 6 & 7
- Riverview Park, Division Street
Develop canoe launch
Priority Criteria: 1, 2, 4 & 5
- District/City – Commerce Ave. right of way trail connection to McKay Park
Priority Criteria: 1, 3, 4, 6 & 7
- Colorado Bridge (river right) The existing pathway requires design modification and safety improvements. Priority Criteria: 1, 2, 3, 4, & 7
- Smith/District - Colorado Bridge (river left) Install boat landing and portage path.
Priority Criteria: 1, 2, 4, & 5

Projects to Monitor

- Southern Crossing Bridge – River left trail connections from sidewalks and bike lanes on bridge to lower trails and to Brooks property
- Newport Ave. Bridge – Under crossing
- Portland Street Bridge – Under crossing

Related River Action Plan Projects - Timing Relative to “City” Funding / Programming

Sidewalk Projects

The City has incorporated a list of sidewalk projects into the City’s Capital Improvement Program (CIP). Historically, a portion of the annual CIP budget (currently \$400,000) has been allocated for construction of sidewalks. Sidewalk projects each year are selected based on a variety of factors that include consideration of emerging community pedestrian needs, coordination with other improvement projects, grant opportunities and other needs identified through CIP public hearings. A trail system through the middle of the urbanized portion of Bend is problematic. Private property development makes the continuation of a true river trail difficult, if not impossible, along many of the inner-city riverbanks. Nearby street corridors with sidewalks that parallel the river will allow the river trail to continue within these difficult urbanized sections. Most of these corridors have sidewalks built in the street right-of-way but some are still in need of site-specific sidewalk construction to make this on-street alternative a full supplement to the river trail system. These missing

sidewalk projects have been included on the City’s Sidewalk Priority List and identified for construction to help fulfill completion of the trail system.

The following sidewalk segments are identified by their River Trail Action Plan project number and are also grouped by their respective river reach:

- Pioneer Reach
 - #1 Riverfront St. and Riverside Blvd: Galveston to Gilchrist, including Gilchrist Avenue.
 - #11 1st Street: Utica to Newport avenues, including a connection to river via Portland Avenue.
 - #12 Drake Road/Harmon Blvd.: Newport Avenue to Galveston Avenue, including a connection to river via Dohemia Road
 - #13 Harmon Blvd./Columbia Street: Galveston to Columbia Park

- Old Mill Reach
 - #7 Allen Road: Columbia to Commerce Park

Trail Projects¹

- Pioneer Reach
 - #3 Trail: Drake Park to Minnesota Breezeway/Parking Lot
 - #6 Trail: Elks river frontage up to Brooks alley

Other Projects²

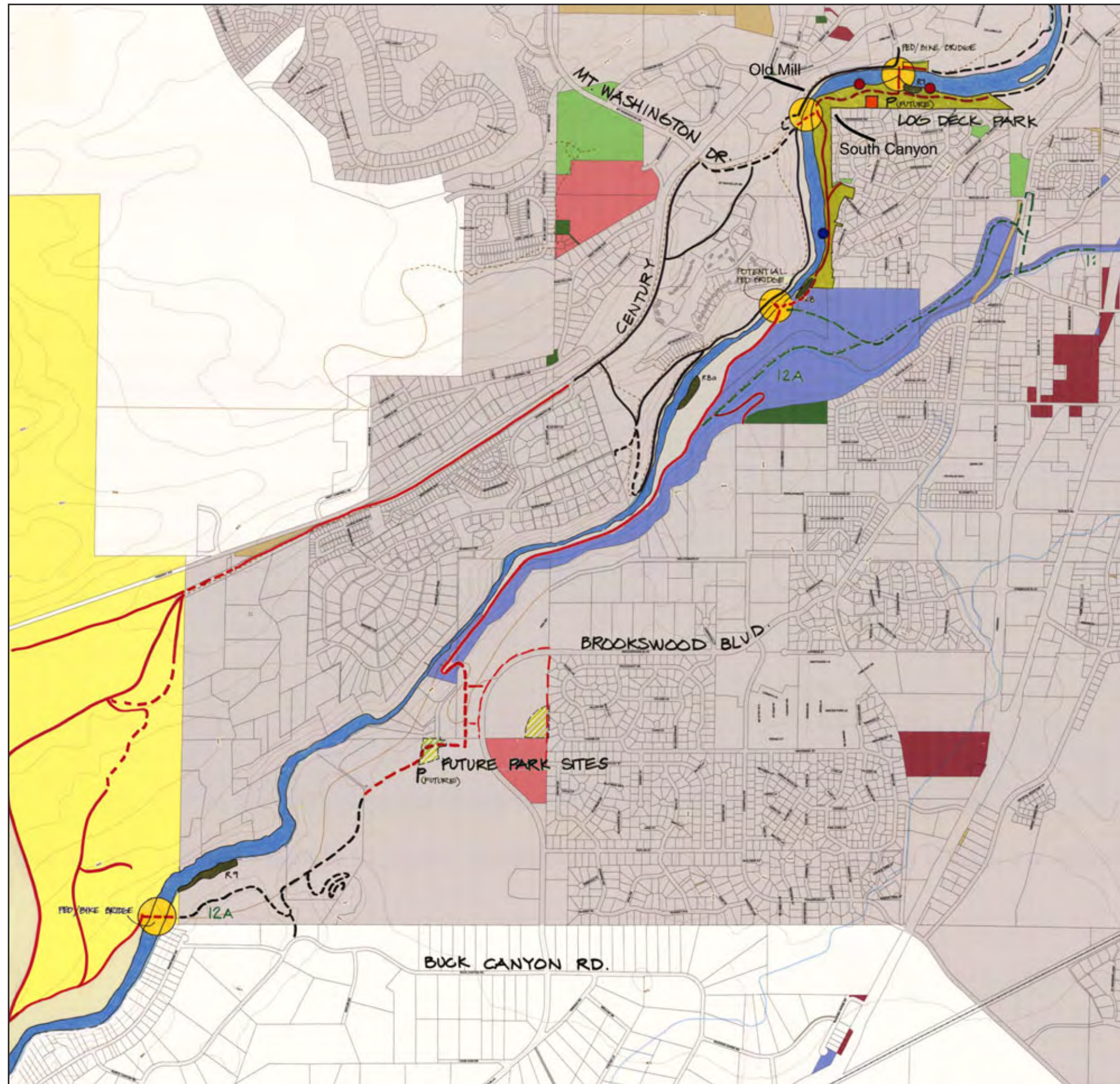
- Pioneer Reach
 - #5 Newport Avenue Bridge Replacement [F.Y. 06-07]
- Old Mill Reach
 - #4A Colorado Street Bridge – Bike/Pedestrian retrofit, south side
- South Canyon Reach
 - #10 Southern River Crossing and Bridge [F.Y. 02-03]

Trail Project Descriptions

The Action Plan has identified 56 projects to be addressed over time in order to complete the Deschutes River Trail. The projects are organized by river reach and described in detail in Appendix B. Trail project descriptions start at the southern end of the Deschutes River Trail and follow the river as it flows north. Project descriptions, aggregated within each reach, are presented on river right and then left as the reader follows the river flow to the north.

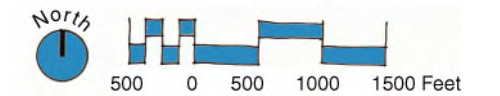
¹ F.I. = fiscal year programmed for construction; if blank, then not programmed.

² *Ibid.*



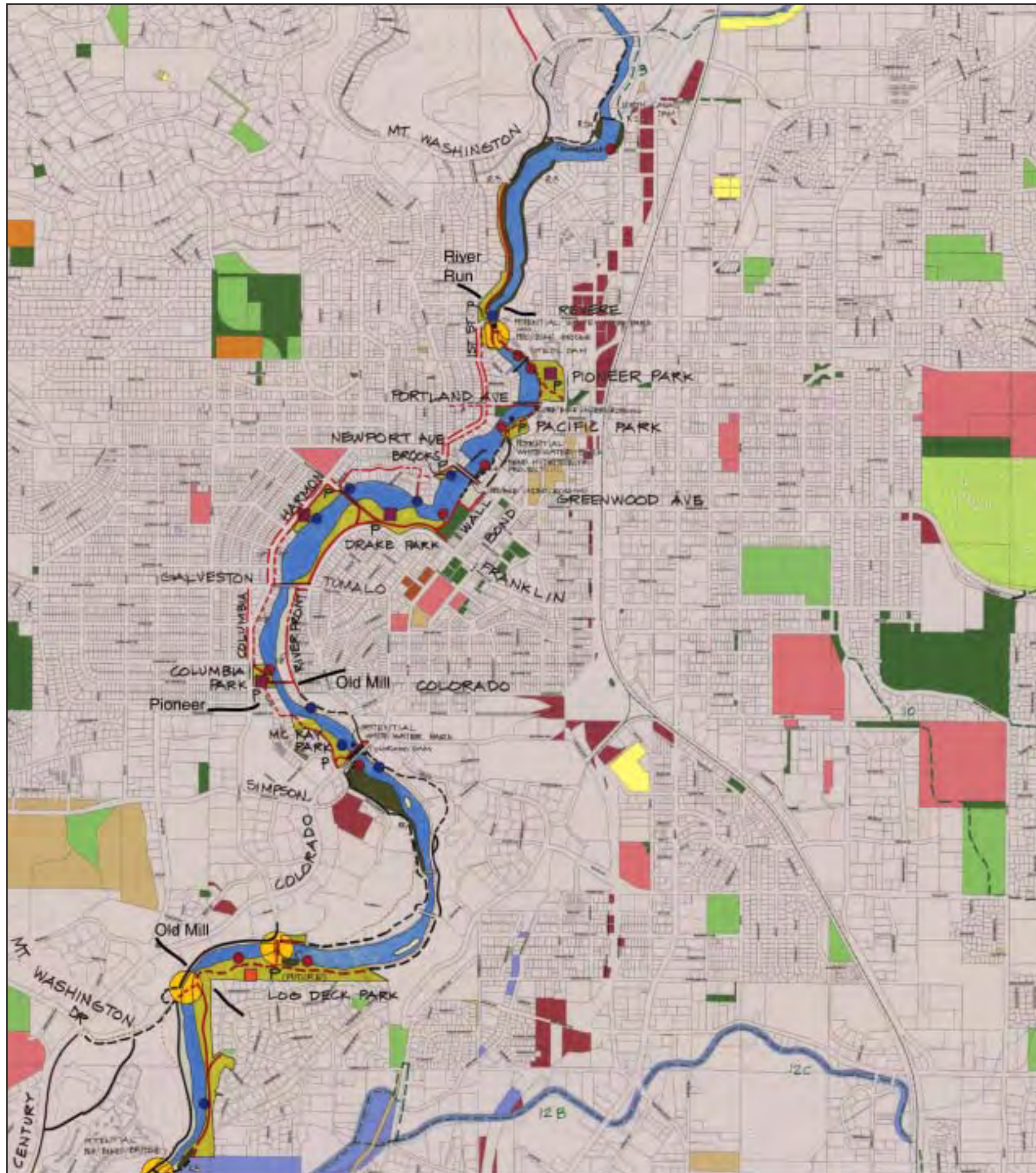
Legend

- | | | | |
|--|---------------------------------|--|---------------------------------------|
| | Existing Trail Public Property | | Irrigation Canal |
| | Proposed Trail Public Property | | Stream |
| | Existing Trail Private Property | | Contour Line - 10 Meter |
| | Proposed Trail Private Property | | Railroad |
| | Bend Urban Trails Plan | | Taxlots |
| | Existing Boat Landing | | Bend City Limits |
| | Proposed Boat Landing | | Deschutes River |
| | Existing Restroom | | City of Bend |
| | Proposed Restroom | | Deschutes County |
| | Existing Parking | | Bend Metro Park & Recreation District |
| | Goal 5 Wetland | | Oregon State Park |
| | | | Bend La Pine School District |
| | | | Central Oregon Community College |
| | | | Irrigation District |
| | | | Deschutes Public Library District |
| | | | State of Oregon |
| | | | The Public |
| | | | United States of America |



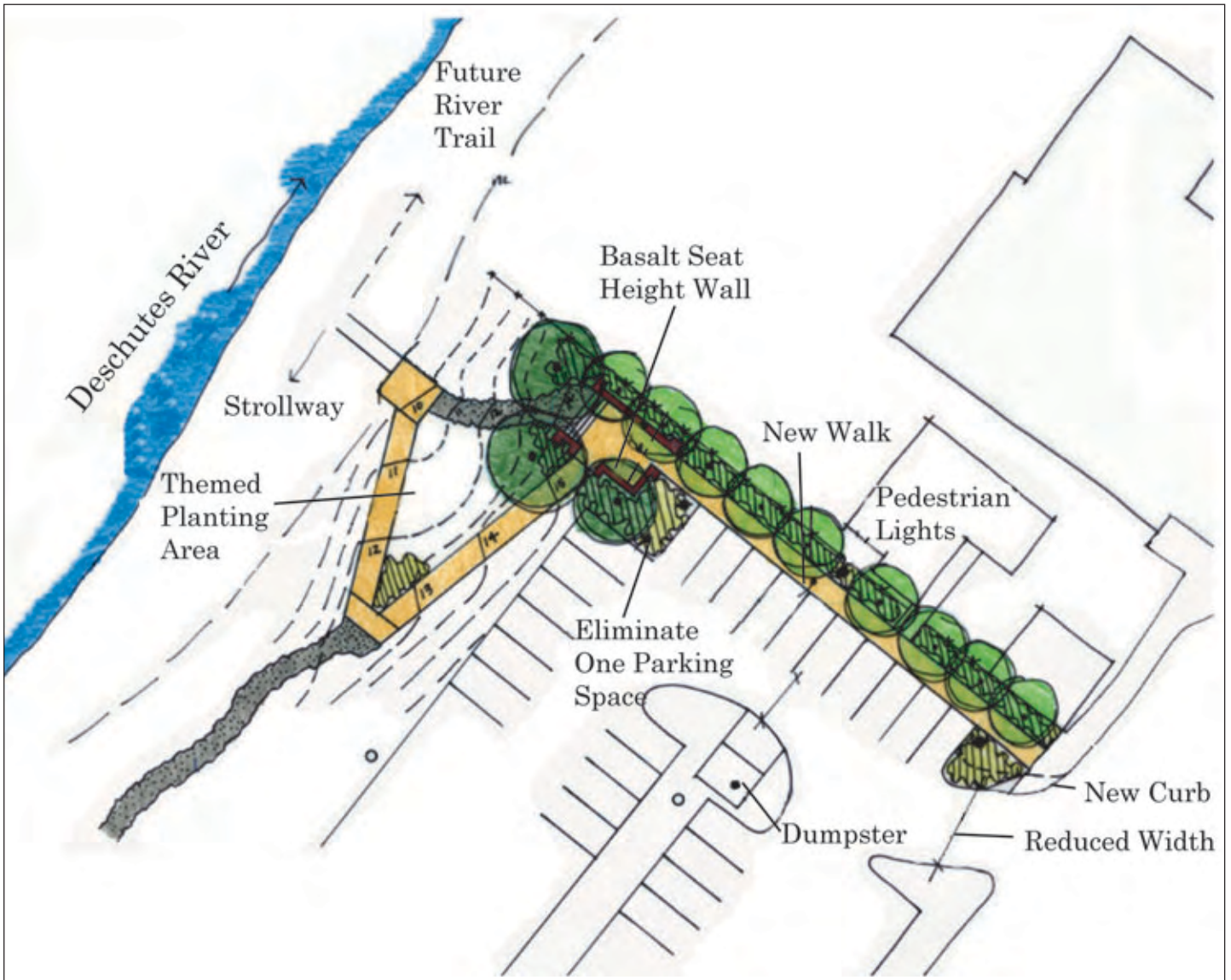
DESCHUTES RIVER TRAIL ACTION PLAN

SOUTH CANYON REACH



DESCHUTES RIVER TRAIL ACTION PLAN

OLD MILL REACH
PIONEER REACH
AND RIVER RUN REACH

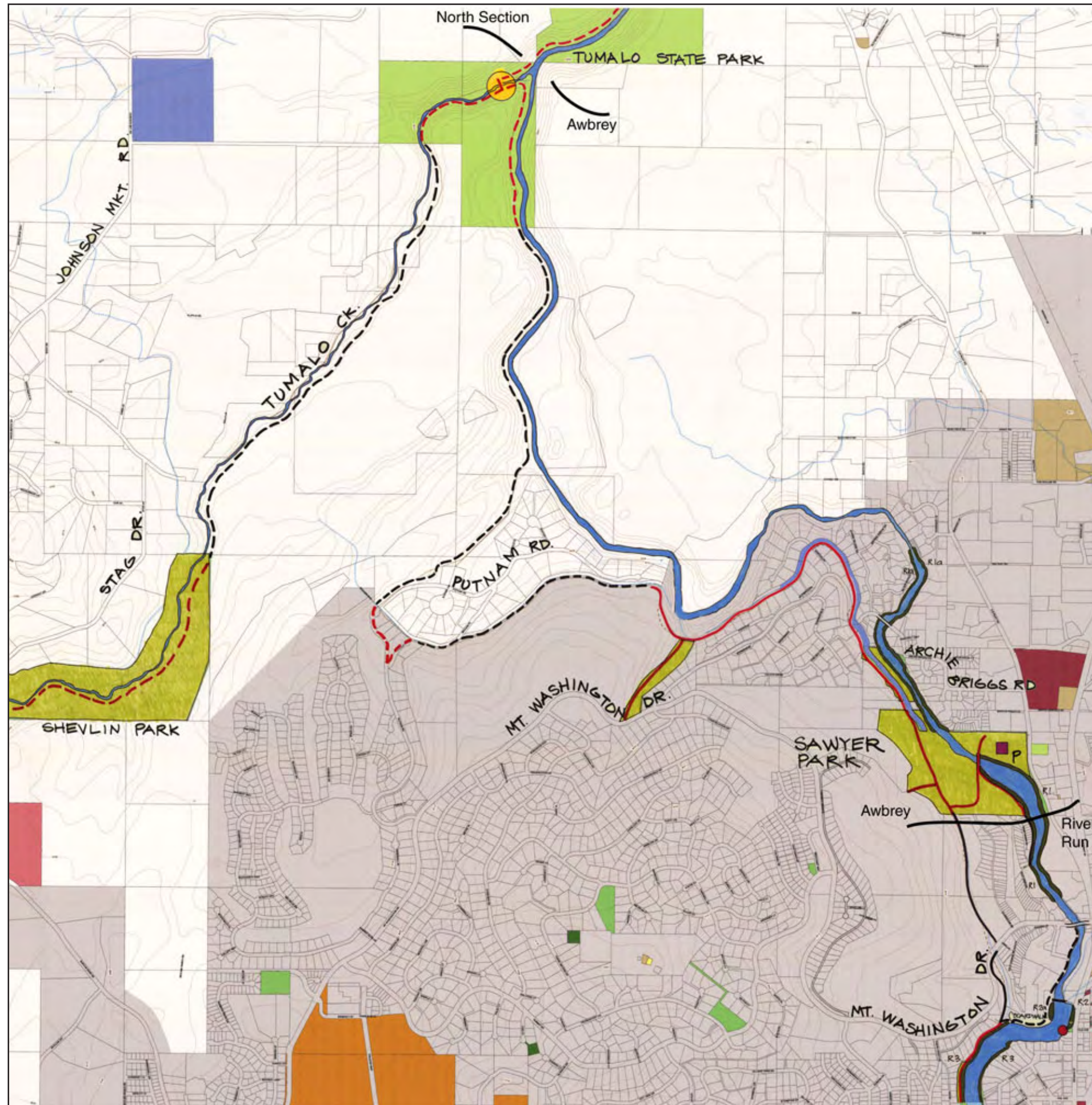


DESCHUTES RIVER TRAIL ACTION PLAN

POTENTIAL CONNECTION
TO THE STROLLWAY

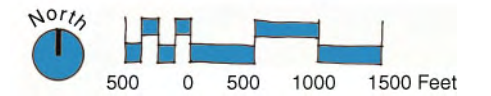
J. T. ATKINS  COMPANY PC
LANDSCAPE ARCHITECTURE AND PLANNING

147 S.W. Shevlin Hixon Drive, Suite 201
Bend, Oregon 97702 541-617-0572



Legend

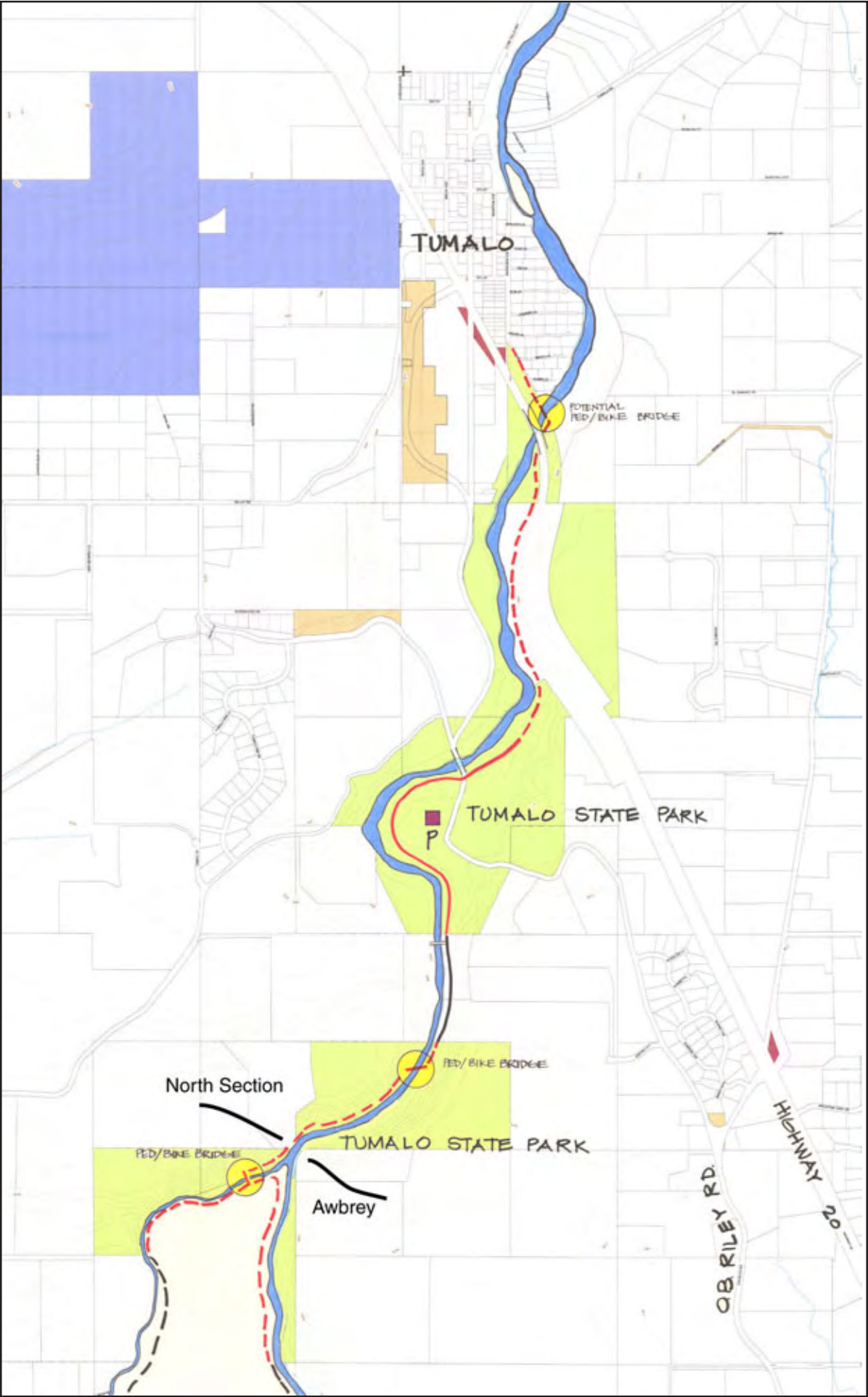
- Existing Trail Public Property
- - - Proposed Trail Public Property
- Existing Trail Private Property
- - - Proposed Trail Private Property
- - - Bend Urban Trails Plan
- Existing Boat Landing
- Proposed Boat Landing
- Existing Restroom
- Proposed Restroom
- P Existing Parking
- Goal 5 Wetland
- Irrigation Canal
- Stream
- Contour Line - 10 Meter
- Railroad
- Taxlots
- Bend City Limits
- Deschutes River
- City of Bend
- Deschutes County
- Bend Metro Park & Recreation District
- Oregon State Park
- Bend La Pine School District
- Central Oregon Community College
- Irrigation District
- Deschutes Public Library District
- State of Oregon
- The Public
- United States of America



DESCHUTES RIVER TRAIL ACTION PLAN

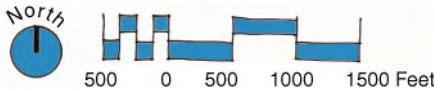
RIVER RUN REACH AND AWBREY REACH

J.T. ATKINS COMPANY PC
 LANDSCAPE ARCHITECTURE AND PLANNING
 147 S.W. Shevlin Hixon Drive, Suite 201
 Bend, Oregon 97702 541-617-0572



Legend

- Existing Trail Public Property
- - - Proposed Trail Public Property
- Existing Trail Private Property
- - - Proposed Trail Private Property
- - - Bend Urban Trails Plan
- Existing Boat Landing
- Proposed Boat Landing
- Existing Restroom
- Proposed Restroom
- P Existing Parking
- | Goal 5 Wetland
- Irrigation Canal
- Stream
- Contour Line - 10 Meter
- Railroad
- Taxlots
- Bend City Limits
- Deschutes River
- City of Bend
- Deschutes County
- Bend Metro Park & Recreation District
- Oregon State Park
- Bend La Pine School District
- Central Oregon Community College
- Irrigation District
- Deschutes Public Library District
- State of Oregon
- The Public
- United States of America



DESCHUTES RIVER TRAIL ACTION PLAN

NORTH REACH

Appendix A. 2002 – 2003 Action Plan Projects

New Segment of the River Trail – East end of Awbrey Meadow to Putnam Rd.

Awbrey Reach – 2

Riverview Park Boat Landing

River Run Reach - 3

Colorado Bridge - Pedestrian Under Crossing

Old Mill Reach - 4

Commerce Ave. (Right-of-Way) Trail Link

Old Mill Reach – 8

Boat Landing - Southwest Corner of Colorado Bridge

Old Mill Reach - 10

Boat Landing - Southwest Corner of Colorado Bridge

Old Mill Reach – 10

Appendix B. Action Plan Projects

South Canyon Reach (Southern end of Riverway to mid point of Log Deck Park)

1. Elk Crossing Pedestrian / Bicycle Bridge (on US Forest Service property)
2. Elk Crossing Trail
3. Cinder Cone Trail
4. Park Link / Sidewalk Trail
5. COI Road / Trail
6. COI Forest Trail
7. Hydro Plant Pedestrian Bridge
8. Hydro Plant Boardwalk
9. Log Deck Park - South end of the Park to the Southern River Crossing Bridge site
10. Mt. Bachelor Village Trail
11. Southern River Crossing Bridge connection (river left)

Old Mill Reach

1. Log Deck Park - Southern River Crossing Bridge site to Old Mill District
2. Log Deck Bridge (pedestrian / bike and service vehicle)
3. Old Mill District Trail System
4. Colorado Bridge - Pedestrian Under Crossing
5. Colorado to Carlon Street Trail
6. Carlon to Riverfront Streets Trail
7. Trail Connection to Southern River Crossing Bridge
8. Deschutes River Trail (Southern Crossing Bridge to the Old Mill Bridge)
9. Park District Trail
10. Old Mill Trail System – River Left
11. Boat Landing - Southwest corner of Colorado Bridge
12. McKay Park
13. Commerce Ave. (Right of Way) Trail Link
14. Allen Road Sidewalk Trail (Columbia Park to Commerce Ave. Right of Way Trail)

Pioneer Reach

1. Riverfront Trail - Gilchrist to Galveston
2. Drake Park
3. Drake Park to north end of the City Parking Lot
4. North Parking Lot to Newport Ave.
5. Newport Street Bridge
6. River Trail
7. Power Station Trail (PacifiCorp site)
8. Pacific Park Trail
9. Portland Street Bridge
10. Pioneer Park Trail - (Portland to First Street Rapids)
11. Columbia Park
12. Columbia Park Link (Galveston to Columbia Park)
13. Sidewalk Connections Newport to Galveston (Harmon and Brooks Parks)
14. NW 1st Street Trail (1st Street Rapids Park to Newport)

River Run Reach

1. Pedestrian / Bicycle Bridge
2. Tumalo Heights Connector Trail
3. Riverview Park Boat Landing
4. River's Edge Trail
5. Deschutes River to South Boundary of Sawyer Park

Awbrey Reach

1. Sawyer Park to East End of Awbrey Meadow
2. New Segment of the River Trail – East end of Awbrey Meadow to Putnam Rd.
3. Sawyer Rim Trail
4. Putnam Rd. to Deschutes River
5. Deschutes River to Tumalo Creek

North Section Reach

1. Tumalo Creek Crossing
2. Deschutes River Trail (from Tumalo Creek Crossing to Deschutes River Crossing)
3. Deschutes River Crossing
4. Deschutes River Trail
5. Tumalo State Parks Trail
6. Tumalo State Parks to Tumalo Trail

Tumalo Creek

Tumalo Creek (from the Deschutes River confluence) to Shevlin Park

Project Descriptions

The following presents the site and project descriptions for the Deschutes River Trail Action Plan projects. The projects are arranged by river reach and are described by river right and left as one follows the river flow. The projects within each reach are numbered on river right from the beginning of the reach to the end of the reach, and then on river left from the beginning of the reach to the end of the reach.

South Canyon Reach (Southern end of Riverway to mid point of Log Deck Park)

1. Elk Crossing Pedestrian/Bicycle Bridge (on U.S. Forest Service property)

Landscape Character

Natural

Trail Status

Proposed trail and bridge on U.S. Forest Service property. Deschutes River crossing point.

Benefit

Connects southeastern part of Bend to the U.S. Forest Service trail system. It is an Urban Trail Plan goal. This trail segment provides a connection point for the urban trail system with the US Forest Service Trail System.

Site Description

Project is located on U.S. Forest Service land adjacent to the Deschutes River. Site has low topography on both sides of the river. The vegetation is scattered pine and grasses. There is a goal 5 wetland downstream from the site on the river right. This area is within Federal and State Wild and Scenic River designation.

Project Description

Pedestrian bicycle bridge.

Project Challenges

Site is within the Federal and State Wild and Scenic designation area.

Project Actions

Obtain approval for siting bridge as shown in City of Bend Urban Trail Plan.

Coordinate with U.S. Forest Service to integrate urban and forest trail systems.

Develop funding strategy.

Meet with responsible agencies regarding the actions within the Wild and Scenic designated area. Determine what permits will be required for bridge construction.

Design and construct a pedestrian bridge.

Project Program

Pedestrian and bicycle bridge.

Project Budget

To be determined

Project Partners

Park District, City of Bend, U.S. Forest Service

Project Responsibilities

Lead – U.S. Forest Service

Support - Park District

Maintenance Program

U.S. Forest Service

2. Elk Crossing Trail

Landscape Character

Semi-natural

Trail Status

Proposed trail on private property.

Benefit

Trail is an Urban Trail Plan goal.

Site Description

The trail site is on private property on the right side of the river. The site is in natural condition (post-fire) with scattered pine, manzanita, sage and grasses. The site provides sweeping views of the mountains to the west and presents a wild character. The area was burned during the Awbrey Hall fire. The area provides a river crossing point for elk and habitat for many species of wildlife.

Project Description

Due to wildlife use of the site, the trail will be located to stay up hill and out of the riparian area adjacent to the river. To do this the trail must proceed up a steep topographic rise to reach the level topographic bench. Once on the bench the trail proceeds north along the eastern property boundary.

Project Challenges

Negotiations with the property owner.

Site is within the State Wild and Scenic designation area.

The siting of the trail within this important wildlife area (elk wintering area).

This section is closely tied to the Elk Crossing Bridge. If the bridge can not be built the viability of this section of trail should be reconsidered. This section of the trail should not be built from south of the Cinder Cone trail until the Elk Crossing Bridge has been constructed. Consider a trail alignment to the east (through private property) to create a loop trail.

Project Actions

Meet with the property owner to discuss the benefits of a trail on their property.

Meet with responsible agencies regarding actions within the Wild and Scenic designated area.

Meet with ODFW regarding wildlife issues.

Acquire trail right-of-way.

Consider winter closure of trail.

Construct trail.

Project Program

Soft surface trail

Interpretive signs

Benches

Project Budget

To be determined

Project Partners

Park District, City of Bend, property owner, ODFW

Project Responsibilities

Lead – City of Bend

South Canyon Reach

Support - Park District
Maintenance Program
Park District

3. Cinder Cone Trail

Landscape Character

Natural

Trail Status

Proposed trail on private property.

Benefit

Connects trail to a great viewpoint of surrounding landscape and mountains. Important location for interpreting the regional landscape.

Site Description

Project site is the small hill to the east of the trail within the Elk Crossing trail area. The summit of the cinder cone provides incredible views the beautiful landscape that surrounds Bend. The site is an A.S.I. (Area of Special Interest) on private property.

Project Description

Construct a side trail that leads from the River Trail to the top of the cinder cone.

Construct a viewing area at the top of the cinder cone.

Project Challenges

Steep site, wildlife area.

Project Actions

Meet with the property owner(s) to discuss the benefits of a trail on their property.

Acquire trail right-of-way.

Consult with ODFW regarding the need for a winter closure of this section of trail during elk movement.

Construct trail.

Project Program

Soft surface trail

Benches

Interpretive sign(s)

- Mountain views

- Elk crossing and habitat

- History of the Awbrey Hall fire

Project Budget

To be determined

Project Partners

Park District, City of Bend, property owner(s)

Project Responsibilities

Lead – Park District

Support - Volunteers

Maintenance Program

Park District

4. Park Link/Sidewalk Trail

Landscape Character

Semi-natural

Trail Status

Proposed trail on sidewalks within new residential development.

Benefit

Provides trail link and connectivity to neighborhood parks within the residential development.

Trail is an Urban Trail Plan goal.

Site Description

The project site is within the River Rim (formerly Brookwood Meadows) and River Canyon Estates development sites.

Project Description

Provide trail connection along new local streets (River Rim and River Canyon Estates developments) - tie trail to development open space and trail system and south link to Elk Meadow School on east side of Brookwood Boulevard.

Project Challenges

Develop clear trail alignment and links to development trail system.

Project Actions

City coordinate with the developers to determine the alignment for the trail through the area.

The City and Park District need to monitor continued residential development for future trail opportunity and be positioned to develop an improved trail alignment when further residential development occurs.

Project Program

Sidewalk trail

Trail markers to identify trail route

Project Budget

To be determined

Project Partners

Park District, City of Bend and developer

Project Responsibilities

Lead – City of Bend

Support - Park District

Maintenance Program

Park District (in parks), per City ordinance in areas outside of the parks.

5. COI Road/Trail

Landscape Character

Semi-natural

Trail Status

Existing trail (on access road) on COI property.

Benefit

Trail provides connectivity to other trails and is an Urban Trail Plan goal.

Site Description

Site is on the river right and is on the existing COI gravel service access road that parallels the above ground water pipe. This section of trail is already heavily used by pedestrians (and dog walkers), and mountain bikes.

Project Description

"Trail" on existing gravel road with sidewalk connections to River Canyon Estates, and Brookwood trail systems.

Project Challenges

None

Project Actions

Coordinate Park District trail operations with COI operations, consistent with the Cooperative Use agreement dated April 2002.

Project Program

Existing gravel service road for trail.

Benches

Trail markers

Interpretive signs (City of Bend – Water Department could be interested in this element)

History of irrigation in area

Where the water goes

Project Budget

To be determined

Project Partners

Park District, City of Bend, COI

Project Responsibilities

Lead – Park District and COI

Support – City of Bend

Maintenance Program

Park District (Trails)

6. COI Forest Trail

Landscape Character

Natural

Trail Status

Existing natural surface trail on COI property.

Benefit

Trail provides connectivity to other trails and opportunity for a forest trail experience.

Site Description

Site is on the river right and is on COI property. There is an existing trail that connects the hydroelectric plant to the intersection with the existing COI service road. The existing trail proceeds along the side slope on the river right through a dense pine and juniper forest. There are many remarkable views of the river and geology of the area along this stretch of the trail. This section of trail is already heavily used by pedestrians (and dog walkers), and mountain bikes.

Project Description

Trail enhancement of the side slope on the river right.

Enhance the connection to the river trail to the north and to the hydro plant access road.

Project Challenges

None

Project Actions

Coordinate Park District trail operations with COI operations, consistent with the Cooperative Use agreement dated April 2002.

Project Program

Benches

Trail markers

Interpretive signs

 The river

 Geology of the area

Project Budget

To be determined

Project Partners

Park District, COI

Project Responsibilities

Lead - Park District

Support - COI

Maintenance Program

Park District maintenance program

7. Hydro Plant Pedestrian Bridge

Landscape Character

Semi-natural

Trail Status

Proposed pedestrian bridge on COI property on the river right and private property on the river left.

Benefit

Connects the river left with Deschutes River Trail and other regional trails on the river right.

Will provide east to west connectivity.

Site Description

The area adjacent to the river is steeply sloping topography with pine forest. Existing trails exist on the right and left sides of the river. Mountain bikes are not allowed on the river left (private property) in this area.

Project Description

Construct a pedestrian bridge slightly down stream from the hydro plant. The project involves locating the bridge on COI property on the river right and private property (Mt Bachelor Village) on the river left.

Project Challenges

Crossing the river at this location

Limiting mountain bike use to the river right in this section (keeping mountain bikes off of the bridge).

Project Actions

Meet with COI and private property owner regarding the location and construction of the bridge.

Meet with regulatory agencies regarding bridge location and construction.

Project Program

Pedestrian bridge

Interpretive sign

Hydro plant and power distribution

Project Budget

To be determined

Project Partners

Park District, City of Bend, COI and private property owner

Project Responsibilities

Lead - Park District

Support – City of Bend

Maintenance Program

Park District maintenance program

8. Hydro Plant Boardwalk

Landscape Character

Semi-natural

Trail Status

Proposed trail (boardwalk) over wetland on District property. Area now has a single-track trail in the wetland.

Benefit

Trail connectivity through a sensitive wetland environment. Boardwalk would keep trail users out of the wetland. Trail section is an Urban Trails Plan goal.

Site Description

Site is located on Park District property on the river right within a wetland area. The wetland is composed of shrubs and grasses and has an existing trail passing through the area. The area is a goal 5 wetland.

Project Description

Construct a boardwalk adjacent to the wetland connecting to the existing Log Deck Park trail and the Hydro Plant trail.

Project Challenges

Developing the boardwalk in the sensitive environment.

Project Actions

Design boardwalk system

Construct the boardwalk

Project Program

Boardwalk

Benches located on wide areas in boardwalk

Interpretive signs

- Wetland functions

- Wildlife viewing opportunities

Project Budget

To be determined

Project Partners

Park District, City of Bend

Project Responsibilities

Lead - Park District

Support – City of Bend

Maintenance Program

Park District maintenance program

9. Log Deck Park - South end of the Park to the Southern River Crossing Bridge site

Landscape Character

Semi-natural

Trail Status

Existing natural surface trail within the south section of Log Deck Park.

Benefit

Trail connectivity through the park. Trail section is an Urban Trails Plan goal.

Site Description

Site is located on Park District property on the river right. The area is composed of pine forest, shrubs and grasses. The existing natural surface trail is used by pedestrians and mountain bikes.

Project Description

Enhance the existing trail to connect with the Hydro Plant boardwalk and Log Deck Park.

Project Challenges

None

Project Actions

Enhance natural surface trail.

Project Program

Natural surface trail

Benches

Dog rest stops

Litter basket

Interpretive signs

Project Budget

To be determined

Project Partners

Park District, City of Bend

Project Responsibilities

Lead - Park District

Support – City of Bend

Maintenance Program

Park District

10. Mt. Bachelor Village Trail

Landscape Character

Natural

Trail Status

Proposed natural surface trail that will complete the trail system on Brooks Resources property.

Benefits

Completes trail system. Trail section is an Urban Trails Plan goal.

Site Description

Forest hillside on the river left.

Project Description

Construct the missing trail link in the Mt. Bachelor trail system

Project Challenges

None

Project Actions

Coordinate with the property owner and City of Bend to discuss project scope and schedule as related to next phase of private development.

Project Program

Natural surface trail

Benches

Interpretive signs

Trail markers

Project Budget

To be determined

Project Partners

Mt. Bachelor Village, Park District, City of Bend, Mt. Bachelor Village

Project Responsibilities

Lead - Mt. Bachelor Village

Support - Park District

Maintenance Program

Mt. Bachelor Village

11. Southern River Crossing Bridge Connection (river left)

Landscape Character

Semi-natural

Trail Status

Proposed trail connection to the Southern River Crossing Bridge. Trail will connect City right-of-way to Mt. Bachelor Village and the River Trail.

Benefit

Trail connection from the existing trail (on river left) to the sidewalk on the Southern Crossing Bridge. This link will provide a connection to trails to the east and west of the river as well as a river crossing on the bridge.

Site Description

Site is located on Brooks Resources property on the river left. The site is a steep slope with pine forest, shrubs and grasses.

Project Description

Connect the future Southern Crossing Bridge sidewalk with the trail on the river left. This project is part of the consortium agreement.

Project Challenges

Accessibility may be an issue within this segment.

Project Actions

Design and construct connection from the river level to the bridge level.

Project Program

Trail connector (type to be determined)

Trail markers

Benches

Dog rest stops

Litter basket

Interpretive signs

Project Budget

To be determined

Project Partners

Brooks Resources, City of Bend, and Park District

Project Responsibilities

Lead – Brooks Resources

Support - City of Bend, Park District

Maintenance Program

Brooks Resources

Old Mill Reach

Old Mill Reach

1. Log Deck Park - Southern River Crossing Bridge site to Old Mill District

Landscape Character

Semi-natural

Trail Status

Proposed soft surface and hard surface trail system in proposed park on District property.

Benefits

Provides trail connectivity and is an Urban Trails Plan goal.

Site Description

Site is the former log deck.

Project Description

Construct trail as part of the Log Deck Park development

Project Challenges

Funding and timing for park development

Project Actions

Coordinate with road and bridge design and construction regarding trail connections and construction timing.

Use trail interest to reinforce interest in the Log Deck Park

Develop boat landings on right side of river in Log Deck Park.

Future restroom and trailhead parking will be provided at Log Deck Park.

Trail connection from the future bridge site to the existing trail (on private property) on the left side of the river.

Project Program

See park program.

Project Budget

To be determined

Project Partners

Park District, City of Bend, volunteers

Project Responsibilities

Lead – Park District

Support - City of Bend

Maintenance Program

Park District

Old Mill Reach

2. Log Deck Bridge (pedestrian / bike and service vehicle)

Landscape Character

Semi-natural

Trail Status

Enhancement of an existing bridge, owned by the Park District.

Benefits

Trail connectivity from right to left side of river. Bridge will also provide views of the park and river.

Site Description

Existing Log Mill Bridge at the middle of the Log Deck Park. There is a Goal 5 wetland just down stream from the bridge on the right side of the river.

Project Description

Enhance the existing bridge structure with partial roof and pedestrian amenities.

Project Challenges

None

Project Actions

Bridge design and construction to be part of the Log Deck Park construction.

Project Program

See Log Deck Park program.

Project Budget

To be determined

Project Partners

Park District, City of Bend, volunteers

Project Responsibilities

Lead - Park District

Support – City of Bend, Trail Friends and Historic Society.

Maintenance Program

Park District

Old Mill Reach

3. Old Mill District Trail System

Landscape Character

Urban

Trail Status

Existing and proposed soft and hard surfaced trails on private property.

Benefits

Provides trail connectivity on the right and left sides of the river. Trail section is an Urban Trail Plan goal.

Site Description

The site of the Old Mill. Private mixed use development site that is undergoing extensive development and investment.

Project Description

Private trail development through the Old Mill District (on right and left side of the river) Development area.

Project Challenges

Coordinate Park District development with the Old Mill District development.

Project Actions

Park District representatives to meet with private property owners to discuss trail and open space locations.

Project Program

Series of hard and soft surface trails to be constructed.

Trail location maps, other trail amenities.

Project Budget

To be determined

Project Partners

Park District, City of Bend, Old Mill Limited Partnership

Project Responsibilities

Lead - Old Mill Limited Partnership

Support - Park District, City of Bend

Maintenance Program

Old Mill District

4. Colorado Bridge - Pedestrian Under Crossing

Project Priority – Criteria 1, 2, 3, 4, & 7

Landscape Character

Urban

Trail Status

Enhancing an existing private under crossing of the Colorado Ave. Bridge.

Benefits

Provides improved trail connectivity and a safe pedestrian / bike crossing of Colorado Ave.

Site Description

Existing trail under crossing point of the Colorado Ave. Street bridge on right side of river.

Project Description

Improve pedestrian under crossing of Colorado Street Bridge on right side of river. Design and construct trail improvements to existing trail (hard surface) on the right side of the river (on private property). Limited sight distances and turning radius will require cyclists to walk bicycles under the bridge.

Project Challenges

Headroom under the bridge, limited sight distances, and confined area.

Project Actions

Survey similar successful projects in other communities.
Meet with property owner to discuss project scope and schedule.
Design and engineering of project.
Acquire necessary permits.

Project Program

Engineered structure.
Trail approaches.
Trail markers.

Project Budget

To be determined.

Project Partners

Park District, City of Bend, William Smith Properties.

Project Responsibilities

Lead - Park District.
Support – City of Bend, William Smith Properties.

Maintenance Program

William Smith Properties.

Old Mill Reach

5. Colorado to Carlon Street Trail

Landscape Character

Urban

Trail Status

Existing hard surface trail on private property.

Benefits

Provides connectivity and is an Urban Trail Plan goal.

Site Description

Private open space on the right side of the river.

Project Description

Use existing trail on right side of river (on private property).

Project Challenges

None

Project Actions

Monitor future plans for the site for trail opportunities.

Project Program

Potential to locate trail map along this section of trail.

Project Budget

To be determined

Project Partners

William Smith Properties, Park District, City of Bend

Project Responsibilities

Lead - William Smith Properties

Support - Park District and City of Bend

Maintenance Program

William Smith Properties

Old Mill Reach

6. Carlon to Riverfront Streets Trail (Miller Property)

Landscape Character

Urban

Trail Status

Proposed hard surface trail on private property.

Benefits

Provides connectivity and is an Urban Trail Plan goal.

Site Description

Private property. The site is open with scattered stands of shrubs and grasses.

Project Description

Construct trail on (on private property) adjacent to river from Carlon Street to Gilchrist Street (using existing alley) on river right. Improve or restore the informal boat access on private property as well as riparian restoration.

Project Challenges

Working with private property owners to develop trail adjacent to the river and connect to Riverfront Street using the existing alley.

Project Actions

Begin discussions with private property owners regarding trail access.

Monitor future development plans for site for trail opportunities.

Explore possible purchase of property.

Project Program

Hard surface trail and appropriate amenities.

Riparian restoration.

Project Budget

To be determined

Project Partners

Park District, City of Bend, Miller Family Trust

Project Responsibilities

Lead - Park District / City of Bend

Support – City Planning Commission

Maintenance Program

Park District maintenance program

Old Mill Reach

7. Trail Connection to Southern River Crossing Bridge

Landscape Character

Semi-natural

Trail Status

Proposed connection from the lower trail to the Southern River Crossing Bridge level.

Benefits

Trail connectivity on the left side of the river.

Site Description

Brooks Resources property on river left.

Project Description

Design and construct stair connection.

Project Challenges

None.

Project Actions

Coordination required between Brooks Resources and the City of Bend.

Project Program

Stairs and connecting trail

Trail markers

Project Budget

Consortium project

Project Partners

Brooks Resources, City of Bend, Park District

Project Responsibilities

Lead – Brooks Resources

Support – City of Bend, Park District

Maintenance Program

Brooks Resources

Old Mill Reach

8. Deschutes River Trail (Southern Crossing Bridge to the Old Mill Bridge)

Landscape Character

Semi-natural

Trail Status

Existing soft surface trail on Brooks Resources property

Benefits

Trail connectivity on the river left. This trail section connects the Old Mill Bridge to the private property down river from the site. Trail section is an Urban Trail Plan goal.

Site Description

Private property on the river left, down stream from the existing bridge. This existing soft surface trail is extensively used by the public.

Project Description

Existing soft surface trail.

Project Challenges

Maintain access along the trail route.

Project Actions

Secure trail easement on property

Project Program

None

Project Budget

To be determined

Project Partners

Brooks Resources, Park District

Project Responsibilities

Lead – Brooks Resources

Support - Park District

Maintenance Program

Brooks Resources

Old Mill Reach

9. Park District Trail

Landscape Character

Semi-natural

Trail Status

Existing soft surface trail on Park District property.

Benefits

Trail connectivity on the left side of the river. This trail section connects the Old Mill Bridge to the private property down river from the site. Trail section is an Urban Trail Plan goal.

Site Description

Park District property on the left side of the river, down stream from the existing bridge.

Project Description

Existing soft surface trail.

Project Challenges

None

Project Actions

Monitor use and manage as necessary.

Vegetation management.

Project Program

Trail markers

Benches

Litter baskets

Dog rest stops

Project Budget

To be determined

Project Partners

Park District, City of Bend

Project Responsibilities

Lead - Park District

Support - Volunteers

Maintenance Program

Park District maintenance program

Old Mill Reach

10. Old Mill - River Left

Landscape Character

Urban

Trail Status

Existing and proposed soft and hard surfaced trails on private property.

Benefits

Provides trail connectivity on the right and left sides of the river. Trail section is an Urban Trail Plan goal.

Site description

The site of the Old Mill. Private mixed use development site that is undergoing extensive development and investment.

Project Description

Private trail development through the Old Mill District (on right and left side of the river) Development area.

Project Challenges Coordinate Park District development with the Old Mill District development.

Project Actions

Park District representatives to meet with private property owners to discuss trail and open space locations.

Project Program

Series of hard and soft surface trails to be constructed.

Trail location maps, other trail amenities.

Project Budget

To be determined

Project Partners

Park District, City of Bend, Old Mill Limited Partnership

Project Responsibilities

Lead - Old Mill Limited Partnership

Support - Park District, City of Bend

Maintenance Program

Old Mill District

Old Mill Reach

11. Boat Landing - Southwest Corner of Colorado Bridge

Project Priority – Criteria 1, 2, 4, & 5

Landscape Character

Urban

Trail Status

Proposed boat landing on private property.

Trail Status

Proposed boat landing on Old Mill District property.

Benefits

Provides river access point and portage around Colorado Ave. to the existing boat landing at McKay Park.

Site Description

Narrow slough area on the left side of the river along the upriver fill slope of the Colorado Ave. Bridge. The adjacent area is a Goal 5 Wetland.

Project Description

Develop proposed boat landing on left side of river (on private property). Trail will connect to McKay Park on Shevlin Hixon Drive under Colorado Ave. McKay Park provides trailhead parking and an existing boat landing. The project includes approximately 200 feet of pathway construction and minor river bank improvement.

Project Challenges

Provide safe and convenient access while protecting the wetland values.

Project Actions

Develop design drawings.

Meet private property owner to discuss project and secure support.

Meet with regulatory agencies to discuss project.

Acquire necessary permits for project.

Project Program

Boat landing.

Connecting soft-surface trail.

Trail markers.

Project Budget

Staff assignment plus private support.

Project Partners

Park District, City of Bend, William Smith Properties, and volunteers

Project Responsibilities

Lead - Park District

Support – City of Bend and volunteers

Trail Maintenance Program

Park District trail maintenance program

Old Mill Reach

12. McKay Park

Landscape Character

Urban

Trail Status

Existing park (Park District property) with water access.

Benefits

Provides trail connectivity, water access point, and trail parking.

Site Description

Existing park with developed lawn and native riparian areas.

Project Description

Soft surface trail from Commerce Avenue right-of-way into McKay Park.

Project Challenges

None

Project Actions

Coordinate with neighbors.

Construct trail.

Project Program

Soft surface trail.

Trail markers.

Trail map.

Potential site for a white water park.

Project Budget

To be determined

Project Partners

Park District, City of Bend and kayak group (white water park)

Project Responsibilities

Lead - Park District

Support - volunteers

Maintenance Program

Park District maintenance program

Old Mill Reach

13. Commerce Ave. (Right-of-Way) Trail Link

Project Priority - Criteria 1, 3, 4, 6 & 7

Landscape Character

Urban

Trail Status

Proposed soft surface trail and steps on City property.

Trail Status

Proposed soft surface trail and steps on City street right-of-way.

Benefits

Provides trail connectivity as well as providing a convenient neighborhood link to McKay Park. This project will enhance the connection between McKay and Columbia Parks.

Site Description

Narrow street right-of-way between two private properties. The northern property has an existing residence; the southern property is currently vacant. There is a steep slope to the park.

Project Description

Construct trail connection on row from Allen Rd. to McKay Park on left side of the river.

Project Challenges

Steep area adjacent to river.

Project Actions

Design trail

Meet with City to discuss location of trail on right-of-way.

Meet with adjacent property owners to discuss trail construction plans.

Construct soft surface trail.

Construct stairs as required.

Project Program

Trail.

Steps.

Trail marker.

Project Budget

To be determined

Project Partners

Park District, City of Bend, adjacent property owners, Deschutes County Pedestrian / Bicycle Advisory Committee

Project Responsibilities

Lead - City of Bend

Support - Park District

Maintenance Program

City of Bend

Old Mill Reach

14. Allen Road Sidewalk Trail (Columbia Park to Commerce Ave. Right of Way Trail)

Landscape Character

Urban

Trail Status

Proposed trail (sidewalk) on City property.

Benefit

Trail connections to neighborhoods.

Site Description

Residential area.

Project Description

Develop sidewalk connection on river left on Allen Road (east side) from Columbia Park to Commerce Avenue right-of-way.

Project Challenges

Gaining neighborhood support.

Project Actions

Meet with the City of Bend to discuss trail opportunities and get trail segment on City CIP.

Meet with neighbors to discuss trail opportunities

Project Program

Sidewalk trail.

Trail markers.

Project Budget

To be determined

Project Partners

City of Bend, Park District

Project Responsibilities

Lead - City of Bend

Support - Park District

Maintenance Program

Per City Ordinance

Pioneer Reach

1. Riverfront Trail - Gilchrist to Galveston

Landscape Character

Urban

Trail Status

Older incomplete sidewalk project on City property.

Benefits

Trail connectivity and Urban Trail Plan goal.

Site Description

This site is composed of a single-family residential neighborhood. Existing narrow sidewalks occur in this area.

Project Description

Sidewalk infill and installation of trail markers on Riverfront Street to Galveston Street on river right (west side of street).

Link to the Gilchrist pedestrian / bike bridge.

Project Challenges

Sidewalk area is narrow.

Gaining neighborhood support.

Potential significant impact on landscaping in some areas.

Project Actions

Project is part of City of Bend CIP.

Meet with City of Bend representatives to discuss location of markers.

Meet with neighborhood to discuss trail opportunities and timing.

Possible future actions could involve the development of a one-way couplet. In earlier discussions neighbors discussed the potential to develop a one-way street system along Riverfront.

Project Program

Hard surface trail (sidewalk)

Trail markers

Project Budget

See City of Bend CIP

Project Partners

City of Bend, Park District, Neighborhood

Project Responsibilities

Lead - City of Bend

Support - Park District, Trail Friends

Maintenance Program

Per City ordinance

Pioneer Reach

2. Drake Park

Landscape Character

Urban Park

Trail Status

Existing trails and pedestrian / bike bridge within Drake Park (District property).

Completed project.

Benefits

Existing trails provide connectivity to proposed segments of the trail. Trail segment is an Urban Trail Plan goal.

Site Description

Existing passive park.

Project Description

Use existing Drake Park trails to north end of Drake Park. Drake Park provides restroom and trailhead parking.

Project Challenges

None

Project Actions

None

Project Program

None

Project Budget

To be determined

Project Partners

Park District, City of Bend

Project Responsibilities

Lead - Park District

Support - City of Bend

Maintenance Program

Park District

3. Drake Park to North End of the City Parking Lot (Mirror Pond Plaza)

Landscape Character

Urban

Trail Status

Proposed trail project on City property connecting the Drake Park trail system to Mirror Pond Plaza and the future River Trail to the north.

Benefit

Connectivity to Minnesota Street improvements and an Urban Trail Plan goal.

Site Description

Existing passive park.

Project Description

Develop boat landing. Connect to proposed Mirror Pond Plaza redevelopment project and the proposed Minnesota Street project. Develop pedestrian connection to Brooks Street through the north parking lot. Focus on improving accessibility.

Project Challenges

Accessibility analysis.

Project Actions

Meet with the City of Bend, Bend Development Board and the Downtowners to discuss trail project and connection opportunities.

Develop an accessibility analysis.

Project Program

Pavers to the stroll way (boardwalk)

Renovate boardwalk

Benches

Litter baskets

Dog rest stops

Interpretive signs

Project Budget

To be determined

Project Partners

Park District, City of Bend, Bend Development Board, Downtowners, volunteers

Project Responsibilities

Lead - Park District

Support - City of Bend

Maintenance Program

City of Bend and Park District

Pioneer Reach

4. North Parking Lot to Newport Ave.

Landscape Character

Urban

Trail Status

Proposed river edge trail on private property.

Benefits

Trail connection to propose under crossing of the Newport Ave. Bridge. An Urban Trail Plan goal.

Site Description

Residential and commercial backyards between buildings and the river.

Project Description

Construct proposed trail to a proposed under crossing on the Newport Street Bridge.

Project Challenges

Acquire right-of-way for trail from private property owners.

Protect privacy of property owners.

Trail user safety and security.

Project Actions

Meet with private property owners to discuss trail opportunities.

Acquire right-of-way to locate trail along the river.

Design and construct trail.

Project Program

Soft surface trail

Strengthen river edge

Benches

Litter baskets

Trail markers

Project Budget

To be determined

Project Partners

Park District, City of Bend, private property owners

Project Responsibilities

Lead - Park District

Support - City of Bend

Maintenance Program

Park District

5. Newport Street Bridge

Landscape Character

Urban

Trail Status

Proposed trail structure under crossing of Newport Ave. Bridge on City property.

Benefit

Provides trail connectivity, and is an Urban Trail Plan goal.

Site Description

Under the Newport Street Bridge

Project Description

Develop trail structure under crossing as part of the Newport Street Bridge improvement project.

Project Challenges

Coordination with bridge design and construction.

Pedestrian connections to Newport Bridge level.

Project Actions

City of Bend to incorporate trail into bridge design.

Project Program

Bridge / trail under crossing

Trail markers

Stairs to bridge level

Project Budget

To be determined

Project Partners

Park District, City of Bend

Project Responsibilities

Lead - City of Bend

Support - Park District

Maintenance Program

Park District, City of Bend

6. River Trail

Landscape Character

Urban

Trail Status

Proposed hard and soft trail on PacifiCorp property.

Benefit

Trail will provide connectivity with the Newport Bridge under crossing and the proposed trail to the north. Trail segment is an Urban Trail Plan goal.

Site Description

Area adjacent to the right side of the river, between Newport Ave. and Pacific Park. A Goal 5 wetland occurs along the right side of the river.

Project Description

Construct hard surface trail (on public property - future Bend Development Board - private development site) to north boundary of PP&E utility site. Develop boat landing on river right at the Bend Development Board site.

Project Challenges

Narrow section of land with topographic difference between majority of the property and the land adjacent to the river.

Coordinate trail development with Newport Street Bridge project.

Project Actions

Meet with the Bend Development Board to discuss trail opportunity.

Monitor development proposals for site to ensure that trail alignment is incorporated into project proposals.

Project Program

Soft surface trail

Benches

Litter baskets

Trail markers

Interpretive signs

Project Budget

To be determined

Project Partners

Park District, Bend Development Board, PacifiCorp

Project Responsibilities

Lead - City of Bend, Bend Development Board

Support - Parks District

Maintenance Program

Park District

Pioneer Reach

7. Power Station Trail (PacifiCorp site)

Landscape Character

Urban

Trail status

Proposed soft and hard surface trail on private property.

Benefit

Trail connections to Pacific Park and trail to the south. Trail segment is an Urban Trail Plan goal.

Site Description

Site of existing PP&E power station. Great old brick building on site.

Project Description

Construct soft surface trail on utility property to southern boundary of Pacific Park on river right. An additional trail occurs along the driveway on the east side of the property. This trail also connects to Pacific Park.

Project Challenges

Coordinate with PP&E

Preventing unauthorized access to PP&E property and facilities

Project Actions

Meet with PP&E to develop trail opportunity.

Project Program

Benches

Litter Baskets

River interpretive center or museum in Power Station Building

Interpretive signs

History of dam and utility use

Project Budget

To be determined

Project Partners

Park District, PP&E

Project Responsibilities

Lead - Park District

Support -

Maintenance Program

Park District

Pioneer Reach

8. Pacific Park Trail

Landscape Character

Urban park

Trail Status

Proposed soft surface trail on Park District property.

Benefit

Trail connection to Pioneer Park and trail segments to south and north is an Urban Trail Plan goal.

Site Description

Existing passive park with trees and grass.

Park provides parking.

Project Description

Construct trail through Pacific Park. Develop boat landing in park. Consider the opportunity to develop a white water play park in this area. There is an opportunity to create a more natural edge to the river within this area.

Project Challenges

None

Project Actions

Design and construct soft surface trail and other trail elements.

Project Program

Soft surface trail

Benches

Dog rest stops

Litter baskets

Trail markers

Project Budget

To be determined

Project Partners

Park District, volunteers

Project Responsibilities

Lead - Park District

Support – Oregon Department of Fish and Wildlife

Maintenance Program

Park District

9. Portland Street Bridge

Landscape Character

Urban

Trail Status

Proposed trail structure under crossing of the Portland Street Bridge on City property.

Benefit

Trail connection between Pacific and Pioneer Parks. Trail segment is an Urban Trail Plan goal.

Site Description

Under Portland Street Bridge.

Project Description

Develop trail structure under crossing. Consider Boulder, Colorado concept.

Project Challenges

Develop adequate clearance under bridge for trail.

Acquiring necessary permits.

Project Actions

Meet with the City of Bend to discuss trail opportunity

Acquire permits.

Design and construct.

Project Program

Develop trail structure under the Portland Street Bridge.

Project Budget

To be determined

Project Partners

Park District, City of Bend

Project Responsibilities

Lead - Park District

Support - City of Bend

Maintenance Program

Park District maintenance program

Pioneer Reach

10. Pioneer Park Trail - (Portland to First Street Rapids)

Landscape Character

Urban Park

Trail Status

Proposed soft surface trail through the existing park (District property).

Benefit

Trail connection between the Portland Street Bridge under crossing (proposed) and the proposed pedestrian bridge that connects to the Deschutes River trail on the river left. The trail segment is an Urban Trail Plan goal. Pioneer Park provides trail parking and restrooms.

Site Description

Existing park site with lawn, gardens, trees parking and restroom.

Project Description

Construct soft surface trail through Pioneer Park. Construct boat landings up and down river of the Steidl Dam on the river right. Pioneer Park provides a restroom and trailhead parking. Consider opportunities to create a more natural river edge within the park. Also provide a trail connection to Revere Avenue.

Project Challenges

Trail access until Portland Street Bridge under crossing is developed.

Project Actions

Design and construct trail and other elements.

Project Program

Soft surface trail

Benches

Litter baskets

Dog rest stop

Interpretive signage

Deschutes River crossing point

Founding of Bend

Project Budget

To be determined

Project Partners

Park District, volunteers

Project Responsibilities

Lead - Park District

Support – Historical Society

Maintenance Program

Park District

11. Columbia Park

Landscape Character

Urban

Trail Status

Proposed river access point within an existing park (District property) that provides parking (on street) and portable restroom facilities.

Benefit

River access point that will provide connectivity to the river trail.

Site Description

Existing passive park.

Project Description

Develop boat landing in Columbia Park.

Project Challenges

Access to river for boats to put in - take out is difficult because of distance to parking and topography.

Project Actions

Design and construct sidewalk (City of Bend).

Design pedestrian access and boat landing (Park District).

Construct project elements.

Project Program

Sidewalks on Columbia and Allen

Boat landing

River trail location map

Benches

Litter baskets

Dog rest stops

Trail markers

Project Budget

City of Bend CIP, Park District Capital Fund for Park Remodel funds

Project Partners

Park District, City of Bend

Project Responsibilities

Lead - Park District

Support – City of Bend

Maintenance Program

Park District maintenance program

Pioneer Reach

12. Columbia Park Link (Galveston to Columbia Park)

Landscape Character

Urban

Trail Status

Proposed sidewalk trail (on City property) within residential neighborhood.

Benefits

Trail connectivity as well as links between Columbia and Harmon Parks.

Site Description

Residential neighborhood streets.

Project Description

On left side of river develop sidewalk connections along Columbia and Allen Rd. to Galveston.

Project Challenges

None

Project Actions

City to meet with neighborhood to discuss sidewalk opportunities.

City to design and construct.

Project Program

Sidewalks

Trail location maps

Project Budget

City of Bend CIP

Project Partners

City of Bend, Park District

Project Responsibilities

Lead - City of Bend

Support - Park District

Maintenance Program

Per City ordinance

Pioneer Reach

13. Sidewalk Connections Newport to Galveston (Harmon and Brooks Parks)

Landscape Character

Urban

Trail Status

Incomplete sidewalk trail on City property.

Benefits

Trail connectivity.

Site Description

Residential streets

Project Description

Construct sidewalk connection from Galveston to Harmon Park (on Harmon Blvd.) on left side of river. Harmon Park provides restroom and parking (on street). Existing sidewalk connection on Harmon to Pageant Park. Sidewalk connections from Pageant Park to Brooks Park on Drake Road.

Project Challenges

Working with the neighbors.

Project Actions

City to meet with neighbors to discuss trail opportunities.

City to design and construct hard surface trail (sidewalk).

Project Program

Hard surface trail (sidewalks)

Trail markers

Project Budget

The City currently has a Community Incentive Fund (C.I.F.) grant to complete the construction of sidewalks on the east side of Harmon Blvd. between Galveston and Harmon Park.

Project Partners

City of Bend, Park District

Project Responsibilities

Lead - City of Bend

Support - Park District

Maintenance Program

Per City ordinance

Pioneer Reach

14. NW 1st Street Trail (from 1st Street Rapids Park to Newport)

Landscape Character

Urban

Trail Status

Existing and proposed trail (sidewalk) on City property.

Benefit

Trail connections to neighborhoods.

Site Description

Residential area.

Project Description

Develop sidewalk connection on left side of river on NW 1st.Street.

Project Challenges

Gaining neighborhood support.

Project Actions

City to plan, design, and construct.

City to meet with neighbors to discuss trail opportunities

Project Program

Develop sidewalk trail system

Trail markers

Project Budget

City CIP

Project Partners

City of Bend, Park District

Project Responsibilities

Lead - City of Bend

Support - Park District

Maintenance Program

Maintain as per City ordinance

River Run Reach

1. Pedestrian and Bicycle Bridge

Landscape Character

Semi-natural

Trail Status

Proposed pedestrian and bicycle bridge on District or private property.

Benefit

Trail connection from the public land on river right to river left. The trail then connects to the existing Deschutes River Trail. Trail segment is an Urban Trail Plan goal. Links the Deschutes River trail to the Pioneer Park facilities (parking and restrooms).

Site Description

Relatively natural riverside area with adjacent residential property.

Project Description

Proposed pedestrian and bicycle bridge connecting District property on river right and left. Evaluate easement or purchase of land on river right connecting Pioneer Park to Lilleoran property. Consider the potential to enhance the white water recreation opportunities within this area.

Project Challenges

Acquiring right-of-way.

Gaining neighborhood support for the location of the bridge project.

Project Actions

Develop siting and bridge design concepts.

Coordinate with adjacent property owners.

Acquire necessary permits.

Construct bridge.

Project Program

Pedestrian and bicycle bridge and soft surface trail approaches.

Project Budget

To be determined

Project Partners

Park District, City of Bend, River user group

Project Responsibilities

Lead – Park District

Support – City of Bend

Maintenance Program

Park District maintenance program

River Run Reach

2. Tumalo Heights Connection Trail

Project Status - Complete

Landscape Character

Semi-natural

Trail Status

Existing soft surface trail link to a new residential neighborhood on District property.

Benefit

Trail connectivity to the neighborhood.

Site description

Narrow trail link within residential area.

Project Description

Tumalo Heights connection (completed) on left side of river.

Project Challenges

None.

Project Actions

Maintenance.

Project Program

None.

Project Budget

To be determined

Project Partners

City of Bend, Park District

Project Responsibilities

Lead – City of Bend

Support - Park District

Maintenance Program

City Trail maintenance program (per City Ordinance)

River Run Reach

3. Riverview Park Boat Landing

Project Priority - Criteria 1, 2, 4 & 5

Landscape Character

Semi-natural

Trail Status

Proposed boat landing at Riverview Park. The park provides parking and river access.

Benefit

Provides necessary down-river boat landing to implement the river as trail concept.

Provides a boat landing on a stretch of the river that does not now have one.

Site Description

River access point on right side of river within small park that includes picnicking and fishing dock.

Project Description

Construct boat landing at Riverview Park.

Project Challenges

Provide safe and convenient access while respecting riparian values.

Project Actions

Design access point.

Construct project.

Project Program

Boat landing area.

Trail markers.

River trail map.

Interpretive signs.

Project Budget

To be determined.

Project Partners

Park District, City of Bend, and Service Club.

Project Responsibilities

Lead - Park District.

Maintenance Program

Park District maintenance program.

River Run Reach

4. Rivers Edge Trail

Landscape Character

Semi-natural

Trail Status

Proposed boardwalk at base of bluff and soft surface trail on private property and Park District easement (dam to Mt. Washington Drive).

Benefit

Trail connection to Mt. Washington Drive. Provides trail access to private development. This trail section is on the Urban Trail Plan from the dam to Mt. Washington on the river left.

Site Description

Site with diverse topography, large pine trees, and rock outcroppings.
Site for a proposed hotel and convention center.

Project Description

Boardwalk and soft surface trail system (on private property) on river left from Deschutes River Trail / TID canal confluence to Mt. Washington Drive.

Project Challenges

Coordination of trail alignment concept with property owner plans.
Neighborhood concerns regarding potential visual impacts of the boardwalk and trail system.

Project Actions

Develop concepts and meet with property owner.
Meet with adjacent property owners.
Design and construct boardwalk and trail.

Project Program

Trail and boardwalk
Benches
Interpretive signs (dam)
Trail markers

Project Budget

To be determined

Project Partners

Park District, City of Bend, private property owner and adjacent property owners

Project Responsibilities

Lead - Park District
Support – City of Bend

Maintenance Program

Park District maintenance program

River Run Reach

5. Deschutes River to South Boundary of Sawyer Park

Landscape Character

Semi-natural

Trail Status

Existing trail on private property.

Benefit

Trail link between the south edge of River's Edge Golf Course and Sawyer Park. Trail segment is an Urban Trail Plan goal.

Site Description

Existing trail section (from south edge of River's Edge to Sawyer Park) within pine and juniper forest. The area has adjacent residential area.

Project Description

Evaluate trail improvement and amenity needs along existing trail (on private property).

Project Challenges

None identified.

Project Actions

Monitor trail use and need for improvements.

Project Program

Trail markers

Project Budget

To be determined

Project Partners

Park District, TID, adjacent private property owners

Project Responsibilities

Lead - Park District

Support - Volunteers

Maintenance Program

Park District maintenance program

Awbrey Reach

Awbrey Reach

1. Sawyer Park to East End of Awbrey Meadow

Landscape Character

Semi-natural

Trail Status

Existing soft surface trail on TID property.

Benefit

Trail connection from trail to south to northern trails. Trail segment is an Urban Trail Plan goal.

Site Description

Trail on TID property with surrounding residential developments.

Project Description

Evaluate trail improvement and amenity needs along the existing trail. Coordinate Sawyer Park renovation work to accommodate trail users. Sawyer Park provides restroom and trailhead parking.

Project Challenges

None

Project Actions

Evaluate the need for improvements.

Project Program

As necessary

Project Budget

To be determined

Project Partners

Park District, TID

Project Responsibilities

Lead - Park District

Support - Volunteers

Maintenance Program

Park District maintenance program

Awbrey Reach

2. New Segment of the River Trail – East end of Awbrey Meadow to Putnam Rd.

Project Priority - Criteria 1, 2, 4, 5, 6 & 7

Landscape Character

Semi-natural

Trail Status

Incomplete soft surface trail on Brooks Resources property.

Benefit

Major trail connection.

The trail segment is a component of the Urban Trail Plan.

Site Description

The trail is on Brooks Resources property on a TID right-of-way through surrounding residential developments.

Project Description

Improve trail surfacing with compacted aggregate.

Project Challenges

None.

Project Actions

Meet with Brooks Resources and TID regarding easements and operating agreements.

Construct project.

Project Program

Trail surfacing.

Trail markers.

Dog rest stops.

Litter baskets.

Project Budget

\$15, 000

Project Partners

Park District, Brooks Resources, TID and volunteers.

Project Responsibilities

Lead - Park District.

Support – Brooks Resources.

Maintenance Program

Park District trail maintenance program.

Awbrey Reach

3. Sawyer Rim Trail

Landscape Character

Semi-natural

Trail Status

Existing soft surface trail on Park District property.

Benefit

Trail connectivity to adjacent neighborhoods.

Site Description

Trail follows a draw up to Mt. Washington Drive.

Pine and juniper landscape.

Project Description

Trail complete. Monitor and maintain.

Project Challenges

Steep slopes

Project Actions

Operations and maintenance.

Project Program

Trail marker.

Project Budget

To be determined

Project Partners

Park District, Brooks Resources

Project Responsibilities

Lead – Park District

Support –

Maintenance Program

Park District maintenance program

Awbrey Reach

4. Putnam Road to Deschutes River

Landscape Character

Semi-natural

Trail Status

Proposed soft surface trail on private property.

Benefit

Trail link between trails to the south and the Deschutes River. Trail segment is an Urban Trail Plan goal.

Site Description

Project area passes through residential area down to natural river setting.

Project Description

Soft surface trail from Putnam Road to the Deschutes River.

Project Challenges

None.

Project Actions

Meet with private property owners to discuss trail concept and acquire right to develop the trail.

Design and construct trail.

Project Program

Soft surface trail

Trail marker

Bench

Litter baskets

Dog rest stops

Project Budget

To be determined

Project Partners

Park District, private property owners

Project Responsibilities

Lead - Park District

Support -

Maintenance Program

Park District maintenance program

Awbrey Reach

5. Deschutes River to Tumalo Creek

Landscape Character

Natural

Trail Status

Soft surface trail on private property.

Benefit

Trail link from southern trail segments to Tumalo State Park property. Trail segment is an Urban Trails Plan goal.

Site Description

Trail section adjacent to the left side of the river, within a remarkable canyon section of the trail. Trail section passes through a pine and riparian landscape.

Project Description

Upgrade existing access trail. Work with private property owners to develop trail along the river left to the confluence of the Deschutes River and Tumalo Creek.

Project Challenges

None.

Project Actions

Obtain easement from private property owners.

Coordinate with State Parks.

Construct trail improvements.

Project Program

Natural surface trail

Trail markers

Project Budget

To be determined

Project Partners

Park District, State Parks, private property owners

Project Responsibilities

Lead - Park District

Support - State Parks

Maintenance Program

Park District and State Parks

North Section Reach

North Section Reach

1. Tumalo Creek Crossing

Landscape Character

Natural

Trail Status

Proposed Creek pedestrian and bike bridge on State Park property.

Benefit

Bridge linking State Park property and providing trail links to the north end of the trail corridor.

Site Description

Narrow creek valley within a steep canyon.

Project Description

Pedestrian / bike bridge crossing of Tumalo Creek.

Project Challenges

Remote site and steep slopes.

Project Actions

Coordinate with State Parks.

Project Program

Pedestrian and bike bridge

Trail markers

Interpretive map

Trail map showing the Tumalo Creek trail connection to Shevlin Park (future)

Project Budget

To be determined

Project Partners

State Parks, Park District

Project Responsibilities

Lead - State Parks

Support - Park District

Maintenance Program

State Parks

North Section Reach

2. Deschutes River Trail (from Tumalo Creek Crossing to Deschutes River Crossing)

Landscape Character

Natural

Trail Status

Existing fishing access on natural surface trail on the river left.

Benefit

Trail connectivity.

Site Description

Beautiful canyon section of trail within a pine and riparian landscape.

Project Description

Natural surface trail on the river left.

Project Challenges

Remoteness

Project Actions

Acquire right-of-way or easement on private property corner.

Assist State Parks in developing the trail.

Project Program

Natural surface trail

Benches

Trail map

Trail markers

Interpretive signs

- Geology

- River dynamics

- Native American history in the area

- Early settlement in the area

Project Budget

To be determined

Project Partners

State Parks, Park District

Project Responsibilities

Lead - State Parks

Support - Park District

Maintenance Program

State Parks

3. Deschutes River Crossing

Landscape Character

Natural

Trail Status

Proposed pedestrian and bike bridge on State Parks property.

Benefit

Trail connections.

Site Description

In narrow basalt canyon with pine and riparian landscape.

Project Description

Pedestrian / bike bridge.

Project Challenges

Remote site

History of littering and parties in the area.

Project Actions

Support State Parks in bridge development.

Project Program

Pedestrian and bike bridge.

Project Budget

To be determined

Project Partners

State Parks, Park District

Project Responsibilities

Lead - State Parks

Support - Park District

Maintenance Program

State Parks

North Section Reach

4. Deschutes River Trail – (from Deschutes River Crossing to South Boundary of the Day Use Section of Tumalo State Park)

Landscape Character

Natural

Trail Status

Existing natural surface trail (from large rockslide to Tumalo State Park) on the right side of the river.

Benefit

Trail connectivity.

Site Description

Narrow basalt canyon with pine and riparian vegetation.

Project Description

Complete.

Project Challenges

None.

Project Actions

Operations and maintenance.

Project Program

Trail markers

Project Budget

To be determined

Project Partners

State Parks, Park District

Project Responsibilities

Lead - State Parks

Support - Park District

Maintenance Program

State Parks

North Section Reach

5. Tumalo State Parks Trail

Landscape Character

Natural

Trail Status

Existing soft trail system within the day-use State Park.

Benefit

Trail connectivity to trails to the south and north.

Site Description

Existing trail through day use area of Tumalo State Park

Project Description

Tumalo State Park provides restroom and trailhead parking. This section of trail will use existing trails.

Project Challenges

None.

Project Actions

Monitor trail for needed improvements.

Project Program

None.

Project Budget

To be determined

Project Partners

State Parks, Park District

Project Responsibilities

Lead - State Parks

Support -

Maintenance Program

State Parks

6. Tumalo State Parks to Tumalo Trail

Landscape Character

Natural

Trail Status

Proposed natural surface trail on State Park and Oregon Department of Transportation property.

Benefit

Trail connectivity to trails to the south and Tumalo.

Site Description

Existing fishing access trail on the river right.

Project Description

This section of trail will use existing trail alignment. A new pedestrian / bike bridge downstream from the highway bridge is part of this section.

Project Challenges

None.

Project Actions

Meet with State Parks and ODOT to discuss trail concept.

Design and construct trail and bridge.

Project Program

Soft surface trail.

Pedestrian / bike bridge.

Project Budget

To be determined

Project Partners

State Parks, Park District

Project Responsibilities

Lead - State Parks

Support – Park District

Maintenance Program

State Parks

Tumalo Creek

Tumalo Creek (from the Deschutes River confluence) to Shevlin Park

Landscape Character

Natural

Site Description

Tumalo Creek Canyon with dense pine, juniper and riparian landscape on private property.

Project Description

This is a long-term trail opportunity that may have to wait until mining area has been reclaimed. Natural surface trail. Shevlin Park provides trailhead parking and restrooms.

Project Challenges

Steep, narrow area. The property owner is very concerned about trail users being near the ongoing mining operations.

Project Actions

Work with private property owners to develop trail along Tumalo Creek.

Meet with private property owners to discuss trail concept and acquire right to construct the trail.

Design and construct trail and amenities

Project Program

Natural surface trail.

Project Budget

To be determined

Project Partners

Park District, private property owners

Project Responsibilities

Lead - Park District

Support - Volunteers

Maintenance Program

Park District maintenance program