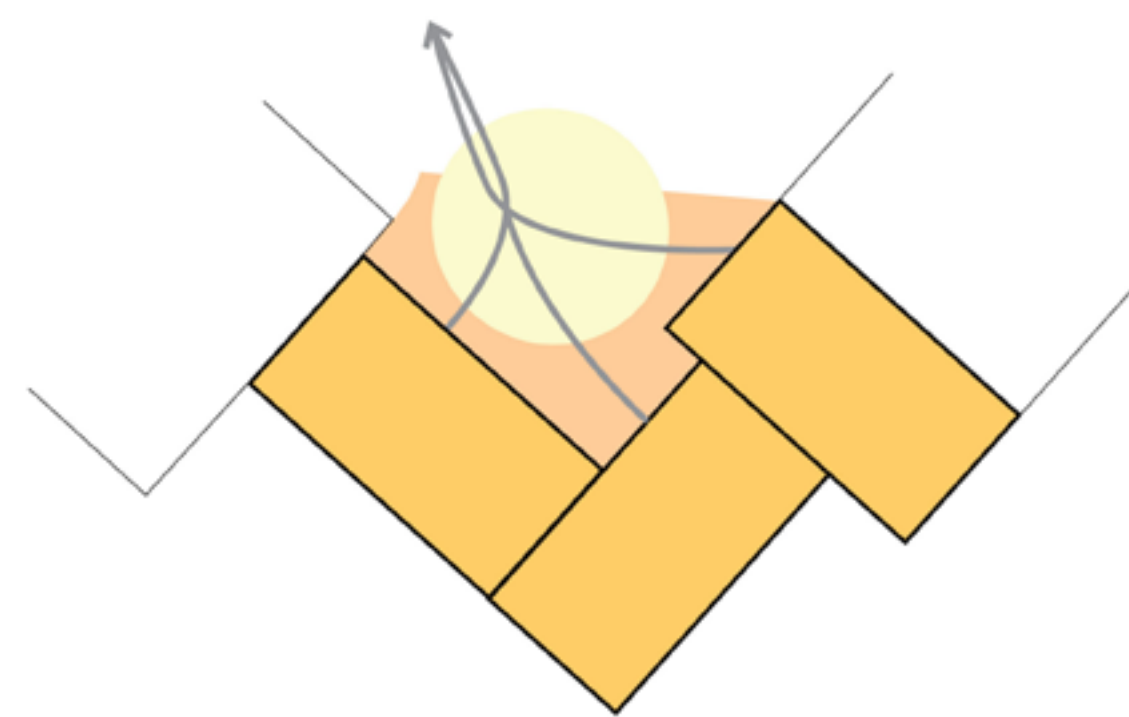
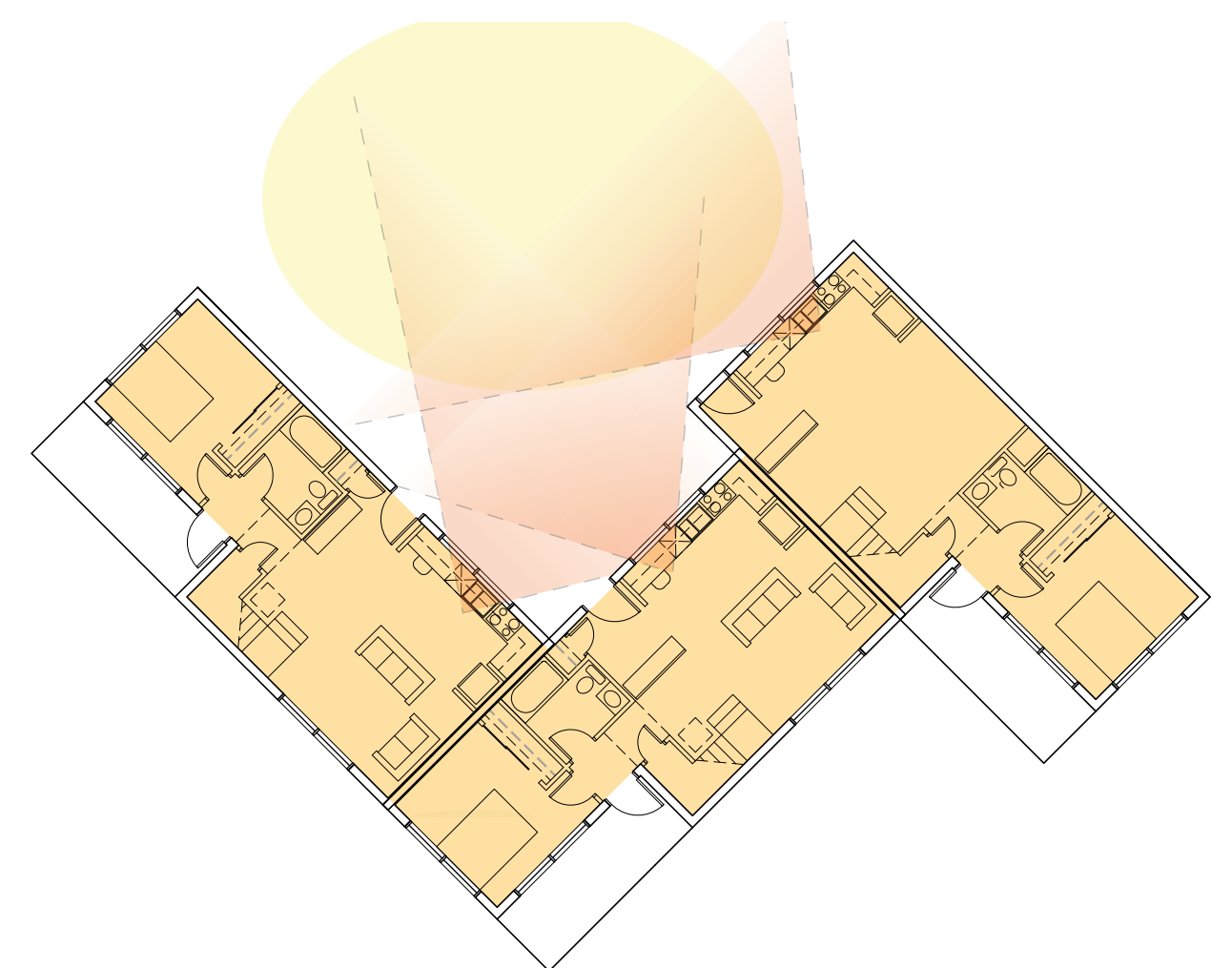


**Cluster:**



The three sided courtyard is the driving motif in the design. Similar to how the site creates enclosure while allowing interaction with the surrounding, the cluster acts to create the smallest set of related units. Organized around a shared outdoor space, a common identity is created for between three and four units. These clusters mix the 1, 2, & 3 bedroom unit types together. These clusters are joined together to create the courtyards on the site scale.



Supervision



Gardens

Total Water Demand:  
1,624,396 Gal. Annually

63% reduction in municipal water need, using:  
- low flow fixtures  
- greywater recycling  
- rainwater catchment

32,219 sq ft of Rooftop Water Catchment, sand filtered. Stored in a 17,315 ft3 tank

38% of Water Use  
613,082 Gal. Annually

Based on Similar Study by Bob Burnham