

CATALOG  
ISSUE  
1957-58

University  
of Oregon

MEDICAL SCHOOL

PORTLAND,  
OREGON

BULLETIN

UNIVERSITY OF OREGON



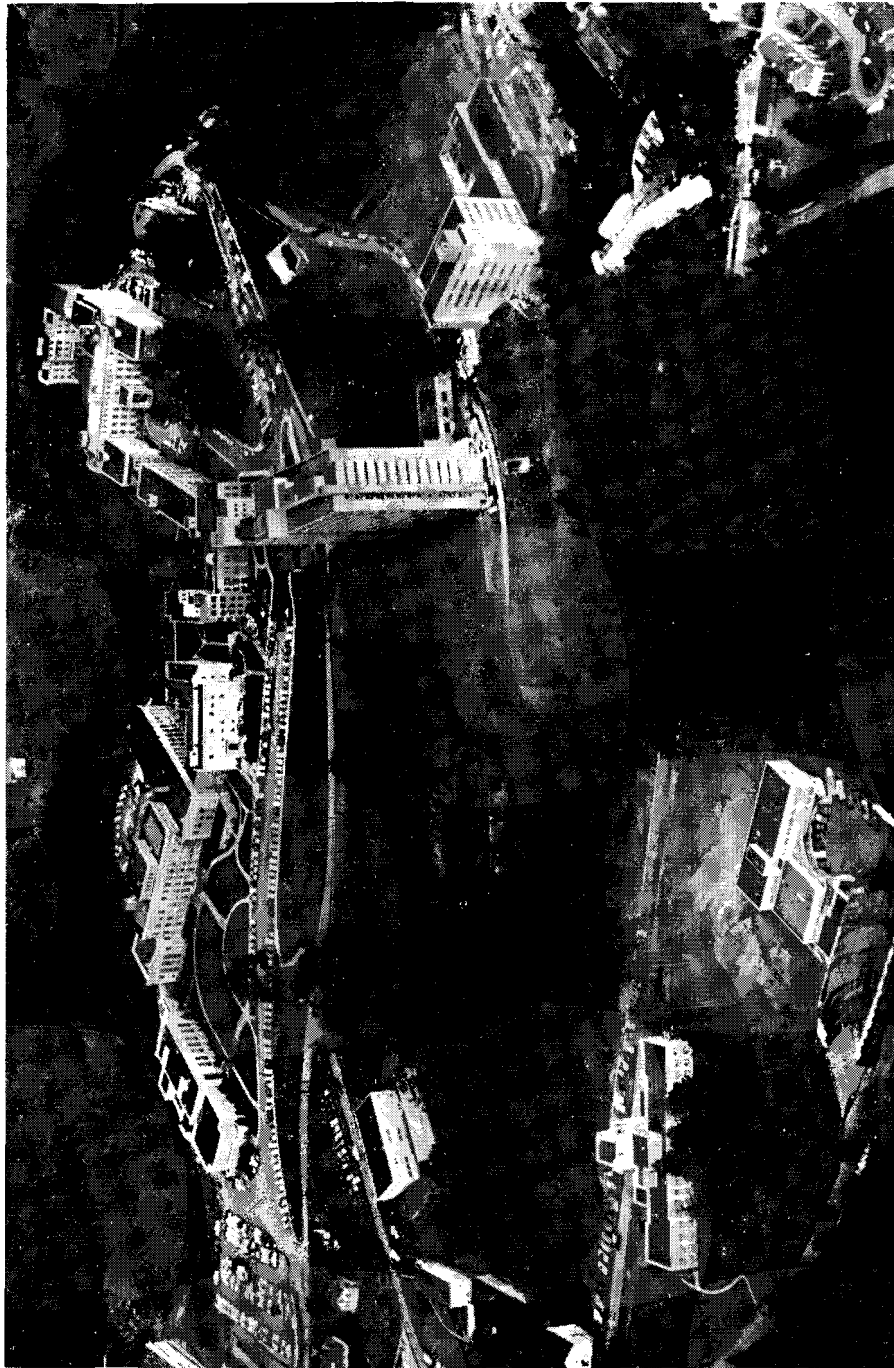
OREGON STATE SYSTEM OF HIGHER EDUCATION

UNIVERSITY OF OREGON BULLETIN

NUMBER 61

JUNE 1957

Entered as second-class matter, January 18, 1950, at the post office at Eugene, Oregon, under act of August 24, 1912. Issued eight times a year, in January, March, April, May (two numbers), June, July, and November. Published by the Oregon State Board of Higher Education, at the University of Oregon, Eugene, Oregon.



AERIAL VIEW OF THE UNIVERSITY OF OREGON MEDICAL SCHOOL CAMPUS, PORTLAND

UNIVERSITY  
OF OREGON  
MEDICAL  
SCHOOL

1957-58 CATALOG

PORTLAND, OREGON

## Table of Contents

	Page
OREGON STATE SYSTEM OF HIGHER EDUCATION.....	5
STATE BOARD OF HIGHER EDUCATION.....	6
ADMINISTRATIVE OFFICERS, STATE SYSTEM.....	7
CALENDAR, 1957-58.....	8
GENERAL INFORMATION.....	9
Location.....	9
Campus and Buildings.....	10
STUDENT INFORMATION.....	13
Admission and Requirements.....	13
Scholastic Regulations.....	15
Fees and Deposits.....	15
Fellowships, Scholarships, Loan Funds, Prizes.....	17
Student Health.....	19
Fraternal and Honor Societies.....	19
Alumni Association.....	20
Curriculum in Medicine.....	20
DESCRIPTION OF COURSES.....	24
Course-Numbering System.....	24
Basic Science Departments.....	24
Anatomy.....	24
Bacteriology.....	25
Biochemistry.....	25
Pathology.....	26
Pharmacology.....	27
Physiology.....	27
Clinical Departments.....	28
Medicine.....	28
Internal Medicine.....	28
Neurology.....	30
Dermatology.....	31
Dental and Oral Medicine.....	31
Psychiatry.....	31
Radiology.....	32

DESCRIPTION OF COURSES (continued)

Clinical Departments (continued)

Public Health and Preventive Medicine.....	32
Surgery.....	32
General Surgery.....	32
Orthopedic Surgery.....	34
Urology.....	34
Anesthesiology.....	34
Ophthalmology.....	35
Otology, Rhinology, and Laryngology.....	35
Obstetrics and Gynecology.....	35
Obstetrics.....	35
Gynecology.....	36
Pediatrics.....	37
SPECIAL PROGRAMS.....	39
Graduate Residency Program.....	39
Postgraduate Program.....	39
Graduate Studies.....	39
Nursing Education.....	40
Hospital Dietetics.....	41
X-Ray Technique.....	41
Medical Technology.....	42
FACULTY.....	45
ENROLLMENT AND DEGREES.....	66
Degrees Conferred June 14, 1957.....	66
Enrollment, 1956-57.....	67
Summary of Enrollment, 1956-57.....	70
INDEX OF NAMES.....	71

## Oregon State System of Higher Education

The Oregon State System of Higher Education, as organized in 1932 by the Oregon State Board of Higher Education following a survey of higher education in Oregon by the United States Office of Education, includes all the state-supported institutions of higher education. The several institutions are elements in an articulated system, parts of an integrated whole. The educational program is so organized as to distribute as widely as possible throughout the state the opportunities for general education and to center on a particular campus specialized, technical, and professional curricula closely related to one another.

The institutions of the Oregon State System of Higher Education are the University of Oregon at Eugene, Oregon State College at Corvallis, Portland State College at Portland, Oregon College of Education at Monmouth, Southern Oregon College at Ashland, and Eastern Oregon College at La Grande. The University of Oregon Medical School and the University of Oregon Dental School are located in Portland.

Each of the institutions provides the general studies fundamental to a well-rounded education. At Oregon College of Education, Southern Oregon College, Eastern Oregon College, and Portland State College, students who do not plan to become teachers may devote their time to general studies or semiprofessional work.

At the University of Oregon and Oregon State College two years of unspecialized work in liberal arts and sciences are provided on a parallel basis in the lower division. Major curricula, both liberal and professional, are grouped on either campus in accordance with the distinctive functions of the respective institutions in the unified Oregon State System of Higher Education.

An interinstitutional booklet, *Your Education*, which outlines the curricula of the several institutions and contains other information concerning the State System, is available. For a copy, write to Division of Information, Oregon State Board of Higher Education, Eugene, Oregon.

## State Board of Higher Education

	Term Expires
HERMAN OLIVER, John Day.....	1958
LEIF S. FINSETH, Dallas.....	1958
R. E. KLEINSORGE, Silverton.....	1959
WILLIAM E. WALSH, Coos Bay.....	1959
HENRY F. CABELL, Portland.....	1960
CHARLES HOLLOWAY, JR., Portland.....	1961
A. S. GRANT, Baker.....	1962
CHERYL S. MACNAUGHTON, Portland.....	1963
J. W. FORRESTER, JR., Pendleton.....	1963

### Officers

R. E. KLEINSORGE.....	President
HENRY F. CABELL.....	Vice-President

### Executive Committee

President, Vice-President, and LEIF S. FINSETH

---

JOHN R. RICHARDS, Ph.D., Chancellor  
EARL M. PALLETT, Ph.D., Secretary of Board

---

Office of the State Board of Higher Education  
Eugene, Oregon

Board members are appointed to six-year terms by the Governor of Oregon with confirmation by the State Senate.

## State System of Higher Education Officers

JOHN R. RICHARDS, Ph.D., Chancellor

O. MEREDITH WILSON, Ph.D. President, University of Oregon	AUGUST L. STRAND, Ph.D. President, Oregon State College
DAVID W. E. BAIRD, M.D., LL.D. Dean, Medical School	ELMO N. STEVENSON, Ed.D. President, Southern Oregon College
HAROLD J. NOYES, D.D.S., M.D. Dean, Dental School	FRANK B. BENNETT, Ed.D. President, Eastern Oregon College
JOHN F. CRAMER, D.Ed. President, Portland State College	ROY E. LIEUALLEN, Ed.D. President, Oregon College of Education
JAMES W. SHERBURNE, Ph.D. Dean, General Extension Division	

---

HERBERT A. BORK, M.S., C.P.A.....	Comptroller and Bursar
RICHARD L. COLLINS, M.A., C.P.A.....	Budget Director
EARL M. PALLETT, Ph.D. ....	Secretary, Board of Higher Education
WILLIAM H. CARLSON, M.A.....	Director of Libraries
FRANCIS B. NICKERSON, M.S.....	Executive Secretary, High School-College Relations Committee

---

### Former Chancellors Oregon State System of Higher Education

WILLIAM J. KERR, D.Sc., LL.D.....	1932-1935
FREDERICK M. HUNTER, Ed.D., LL.D.....	1935-1946
PAUL C. PACKER, Ph.D., LL.D.....	1946-1950
CHARLES D. BYRNE, Ed.D.....	1950-1955

## Medical School Calendar, 1957-58

### Fall Term, 1957-58

September 30, <i>Monday</i> .....	Registration
October 1, <i>Tuesday</i> .....	Instruction begins
October 14, <i>Monday</i> .....	Last day to register for full credit or to change courses
November 28, <i>Thursday</i> .....	Thanksgiving Holiday
December 21, <i>Saturday</i> .....	Fall term ends

### Winter Term 1957-58

January 6, <i>Monday</i> .....	Registration for graduate students and medical-technology students
January 6, <i>Monday</i> .....	Instruction begins
January 20, <i>Monday</i> .....	Last day to register for full credit or to change courses
March 22, <i>Saturday</i> .....	Winter term ends

### Spring Term, 1957-58

March 31, <i>Monday</i> .....	Registration for graduate students and medical-technology students
March 31, <i>Monday</i> .....	Instruction begins
April 14, <i>Monday</i> .....	Last day to register for full credit or to change courses
May 30, <i>Friday</i> .....	Memorial Day, holiday
June 13, <i>Friday</i> .....	Commencement
June 14, <i>Saturday</i> .....	Spring term ends

### Summer Term, 1958 (Graduate Students)

June 23, <i>Monday</i> .....	Registration
June 23, <i>Monday</i> .....	Instruction begins
July 4, <i>Friday</i> .....	Independence Day, holiday
July 7, <i>Monday</i> .....	Last day to register for full credit or to change courses
September 1, <i>Monday</i> .....	Labor Day, holiday
September 6, <i>Saturday</i> .....	Summer term ends

## General Information

THE UNIVERSITY OF OREGON MEDICAL SCHOOL has been in continuous operation since 1887, when it was granted a charter by the Board of Regents of the University of Oregon. In 1913, the medical department of Willamette University was merged with the Medical School; the alumni bodies of the two schools were also combined.

Although the Medical School, because of its location in a different city from other divisions of the University, has administrative and faculty autonomy, the academic position of the school as an integral part of the University of Oregon is established in its charter and is recognized under the organization plan of the Oregon State System of Higher Education.

Instruction in the Medical School includes a standard curriculum for undergraduate medical students, graduate work in basic and clinical sciences, training for interns and residents, a program of postgraduate medical education for practicing physicians, and curricula in nursing education, including both an undergraduate curriculum and advanced programs for graduate nurses. In addition to the work for doctors and nurses, the school offers courses in medical technology, X-ray technique, and dietetics.

Enrollment of undergraduate students is restricted to about 300; applications are received from all sections of the United States, but preference is given applicants from Oregon and the Pacific Northwest. Enrollment in nursing education totals approximately 400.

Research is conducted in all departments of the Medical School. Research achievements have brought national recognition to many members of the faculty and to the school. The research program is supported by grants from national, state, and private organizations, foundations, and societies, as well as by gifts from individuals.

The Medical School also performs a vital public service by assisting the physicians of the state, through its hospitals and clinics, in providing specialized medical treatment for the people of the state of Oregon. In its activities aimed at bringing better health to the people of the state, the school is affiliated with numerous civic, professional, and governmental health agencies.

In addition to its full-time staff of physicians, scientists, nurses, and technicians, more than 400 physicians and surgeons practicing in Portland and the surrounding area donate a portion of their time to the teaching and research programs of the Medical School.

## Location

PORTLAND (population 409,420), situated on the Willamette River near its junction with the Columbia, is a city of diverse business and industrial activities. Although 100 miles from the Pacific, Portland is an important seaport. The city is known for its beautiful homes, parks, and boulevards, and for its equable climate. The foothills of the Cascade Mountains rise on the outskirts of the city. Mount Hood, one of the major peaks of the range, towers on the southeastern horizon.

As indicated elsewhere, concentration on a number of hospitals on the campus of the Medical School and articulation of the work of the school with various health and social agencies of the city afford superior opportunities for medical study.

## Campus and Buildings

PRIOR TO 1919 the Medical School was housed in a three-story frame building at Twenty-third and Lovejoy streets near the Good Samaritan Hospital. In 1919, the school was moved to a twenty-acre tract deeded to the regents of the University by the Oregon-Washington Railroad and Navigation Company in 1916, as a campus for future development of a center of medical teaching and research. The campus was enlarged in 1924 by the addition of Sam Jackson Park, an adjoining tract of eighty-eight acres, given by the late Mrs. C. S. Jackson and the late Mr. Philip Jackson in behalf and in memory of the late Mr. C. S. Jackson. The campus of one hundred and eight acres occupies a site of exceptional scenic grandeur, at an elevation overlooking the city and the Willamette River, isolated from noise and smoke but within one and one-half miles of the business center. It affords an ideal setting for Medical School buildings and affiliated hospitals. In 1920 the University conveyed to Multnomah County nine acres on the campus for the construction of a general charity hospital. In 1926 a tract of twenty-five acres was deeded to the United States government as a site for a veterans' hospital.

**The First Medical Science Unit** (1919) was financed through an appropriation of \$110,000 by the 1917 State Legislature and by cash donations amounting to \$25,000 from Portland citizens. The building is a three-story reinforced-concrete structure.

**Mackenzie Hall** (1922), second unit of the Medical Science Building, was financed by an appropriation of \$113,000 by the 1921 State Legislature, matched by an equal appropriation from the General Education Board of New York. It is named in honor of the late Dean Kenneth A. J. Mackenzie. The building is four stories high, similar in construction to the first unit but with twice its capacity. The General Education Board appropriated \$50,000 in addition for equipment.

**The Outpatient Clinic** (1931) affords teaching facilities for the clinical branches of the Medical School. Funds for the construction of the building were provided through a gift of \$400,000 from the General Education Board of New York.

A unified and coordinated arrangement of centralized services, such as clinical laboratory, radiology, physical and occupational therapy, social service, and pharmacy, many of which are located in the Outpatient Clinic, eliminates duplication and greatly facilitates the care of patients and the teaching of medical students.

The history of the Outpatient Clinic began with the founding of the Portland Free Dispensary in 1907 by the People's Institute, a private philanthropic institution. The dispensary became affiliated with the Medical School in 1909. It was located at Fourth and Jefferson streets until January 1, 1931, when it was merged into the Outpatient Clinic on the Medical School campus.

**The Multnomah Hospital** (1923, 1950), constructed by the commissioners of Multnomah County, has a capacity of 310 beds, with facilities for general medical, surgical, and obstetrical patients. The Multnomah Hospital group includes also the Nurses Home (1927) and the Heating Plant (1923).

Under the terms of a contractual arrangement between the commissioners of Multnomah County and the Oregon State Board of Higher Education, the Medical School has access to the hospital for teaching purposes, and the director of the Hospital is a Medical School official. The professional staff of the hospital is appointed by the Medical School. The arrangement provides a most successful affiliation for teaching, research, and the care of the sick.

**The University State Tuberculosis Hospital** (1939) has an 80-bed capacity and a large outpatient unit. The hospital has medical and surgical facilities for

teaching medical students, interns, residents, and nurses. Funds for the hospital were provided through a state appropriation of \$110,000, a Public Works Administration grant of \$130,900, and a gift from Mrs. Grace R. Meier, Mrs. Jack Meier, Mrs. Joseph Ehrman, Jr., and Mrs. Frederick Ganz, in memory of Mr. Julius L. Meier, their husband and father. The outpatient clinic of the University State Tuberculosis Hospital is called the Julius L. Meier Memorial Clinic.

**The Library and the Auditorium** (1939) was erected with funds provided through gifts of \$100,000 from Dr. John E. Weeks and \$100,000 from the Rockefeller Foundation, and through a grant of \$163,500 from the Public Works Administration. The Library stacks provide shelving space for 100,000 volumes, and may be expanded to accommodate an additional 100,000. The auditorium, with a seating capacity of 600, provides facilities for lectures and scientific meetings in the field of medicine for students in the Medical School and physicians of the state of Oregon and the Pacific Northwest.

The Medical School Library contains more than 62,000 volumes of books and bound periodicals, and a large number of unbound periodicals. Approximately 1,100 current periodicals are received. Through the privileges of inter-library loan and microfilm service, it is possible to obtain within a few days materials not contained in this collection. The Oregon State Board of Medical Examiners, the Portland Academy of Medicine, and the Multnomah County Medical Society contribute part of the annual operating fund.

The Library collection has been enriched through many valuable gifts of books and periodicals from individuals and organizations. Books and objects of medical historical interest are being assembled through the aid of the Women's Auxiliary of the Oregon State Medical Society and other friends of the Medical School. Public acknowledgement of gifts to the Library is made in a printed list in the annual Commencement Program.

Entering students are given a survey of the resources of the Library and instruction in their use.

**The Nurses Dormitory** (1943), formerly the Portland Medical Hospital, was purchased in 1943 to provide needed housing facilities for students in the Department of Nursing Education. The Nurses Dormitory accommodates 95 students.

**The Laboratory and Administration Building** (1949) was financed through a state appropriation of \$663,000. The building provides facilities for the basic science departments, together with administrative offices for the Medical School.

**The Physical Plant Shop and Warehouse** (1953) provides shop facilities and a central warehouse for the Physical Plant Department. The building was financed by a state appropriation of \$71,000.

**The Crippled Children's Division Building** (1954) provides modern office and clinical facilities for the statewide crippled children's service administered by the Medical School. The building was financed through a \$280,000 appropriation approved by the 1953 Legislature.

**The University of Oregon Medical School Hospital** (1955). This 272-bed teaching and research hospital was completed in the fall of 1955 at a cost of approximately \$6,200,000. Funds for the construction of the hospital were provided principally from state appropriations, supplemented by several gifts and grants. The hospital provides 128 beds for general medical and surgical patients, 31 beds for psychiatric care, and 113 beds for the new Doernbecher Memorial Hospital for Children.



The original Doernbecher Memorial Hospital for Children was built in 1926. It was financed through a gift of \$200,000 by Mrs. E. W. Morse and Mr. Edward Doernbecher in memory of their father, the late Mr. F. S. Doernbecher, as well as other gifts totaling \$120,000. The original hospital has been remodeled to provide clinical laboratory facilities plus expanded area for certain departments of the hospitals and clinics.

# Student Information

## Admission and Requirements

ADMISSION TO THE MEDICAL SCHOOL is based upon two types of qualifications. The applicant must present evidence of good character, proper attitude, and sincere interest in the study of medicine. He must also have demonstrated sufficient intellectual ability to undertake satisfactorily the study of medicine, as judged by his premedical scholastic record and scores on the Medical College Admission Test. Admission is on a competitive basis.

Applicants for admission are required to have completed satisfactorily four years in an accredited high school, or its equivalent, and collegiate preparation of not less than three years of full-schedule work in an accredited college or university.

The applicant must have completed satisfactorily 138 term hours (92 semester hours) of college work, exclusive of military science.

The following subjects and credits are prescribed as the minimum acceptable for admission:

	Term hours
Chemistry.....	24
General inorganic, which may include qualitative analysis.....	12
Quantitative analysis, emphasis on volumetric analysis.....	4
Organic.....	8
Biology.....	15
General biology or zoology.....	9
Selections from comparative anatomy, embryology, or genetics (in this order of preference).....	6
Physics.....	12
Mathematics.....	6
*English.....	9
Electives.....	72
<hr/>	
Total prescribed credit.....	138

Foreign language is not specifically required for admission to the Medical School, but some knowledge of a major modern foreign language (German, French, Russian, Spanish) is highly recommended as a part of the cultural training of the physician. Students anticipating research in the medical sciences should have a basic knowledge of German and French. The premedical student should keep in mind that some medical schools require credit in foreign language for admission.

The work in organic chemistry must include the chemistry of both aliphatic and aromatic compounds. Biochemistry will not be accepted toward meeting the requirements. At least 25 per cent of all chemistry credit must be for laboratory work.

Human anatomy is not accepted toward meeting the minimum requirements in biology. The work in physics must include the divisions of mechanics, heat and sound, light and electricity.

The work in mathematics should be of standard college grade, and should include subjects such as algebra, elementary analysis, trigonometry, or calculus.

The premedical student is advised very strongly against taking any medical courses in his preparation for the study of medicine. Rather, he should devote his efforts to obtaining the best possible general cultural education.

*Recommended Elective Subjects.* The student preparing to study medicine is advised to plan a balance in elective courses between courses in liberal arts and courses, beyond the minimum requirements, in subjects prescribed for admission to the Medical School. Subjects suggested are: history, economics, sociology, psychology, English, public speaking, and foreign language.

\* Students expecting to receive the bachelor's degree from the University of Oregon should include 9 hours of English composition and 9 hours of English literature in their pre-medical programs.

A fee of \$5.00 is charged for the evaluation of transcripts submitted with the application for admission. When an applicant is accepted for admission to the Medical School, a deposit of \$25.00 must be paid not later than two weeks following acceptance, in order to reserve a place in the entering class. If this deposit is made prior to December 15, it is not refundable after January 15, should the student release his place in the class. If the deposit is made after December 15, it is not refundable after a period of thirty days following notice of acceptance.

A place in the first-year class is not granted to an applicant more than one year before the beginning of instruction for that class.

The University of Oregon Medical School has the primary responsibility of providing medical training for well-qualified residents of the state of Oregon; next preference is given to applicants from other western states which do not have medical schools. It is seldom possible to admit applicants from other regions.

Applications for admission should be submitted between July 1 and December 15. Application forms may be obtained by request to the Registrar of the Medical School.

**Aptitude Test.** Applicants for admission are expected to have taken the Medical College Admission Test given for the Association of American Medical Colleges at the various institutions offering premedical curricula. Exceptions to this rule may be allowed in the case of applicants who, because of legitimate reasons approved by the Committee on Admissions, have been unable to take the test.

**Bachelor's Degree.** A student entering the University of Oregon Medical School without a Bachelor of Arts or Bachelor of Science degree must complete the work required for one of these degrees in the Oregon State System of Higher Education, or in the institution at which he received his premedical preparation, before entering upon the work of the third year in the Medical School.

The University of Oregon, Oregon State College, and most of the colleges and universities of the Pacific Northwest recognize credit earned by a student during his first year at the Medical School as credit earned in residence toward the bachelor's degree.

**Special Students.** Graduates in medicine may register as special students. Graduates in medicine may not be candidates for the degree of Doctor of Medicine.

Students holding only academic degrees may be admitted as special students in certain courses in the Medical School upon recommendation by the head of the department concerned, subject to the approval of the Committee on Admissions and the dean. Such students may not receive academic credit for work in clinical subjects and may not audit clinical courses.

Undergraduates may not be admitted to courses in the Medical School as special students.

Special students are required to submit credentials in support of their application for admission.

Students who register for special work are charged tuition according to the amount of work undertaken and the nature of the course.

**Advanced Standing.** A student may be considered for admission with advanced standing, provided his official credentials are accompanied by a statement from the registrar of the institution from which he is transferring to the effect that the applicant's scholarship in medical-school work ranks in the upper fifty per cent of his class. An honorable dismissal and premedical preparation meeting the regular requirements for admission are also required. In general, only transfer to the third-year class is feasible. Only a limited number of students can be admitted with advanced standing.

## Scholastic Regulations

**Grading System.** A numerical grading system of *I* to *V* is used at the Medical School. *I* is the highest and *V* is the lowest passing grade. If a course is not completed within the time allotted, the work must be finished satisfactorily within one year. *Failure* in a course requires repetition of the course.

**Elective Courses.** If a student registers for an elective course, he must complete the course unless he officially withdraws. A student may not withdraw from an elective course without penalty later than two weeks after the beginning of the term unless he has the special permission of the dean.

**Promotion.** In order to be promoted from the first to the second year and from the second to the third year in the Medical School, the student must receive a passing grade in all subjects and an average grade of *IV* or better for the work of the entire year. For promotion, third- and fourth-year students must satisfactorily complete all subjects. The status of students failing to meet these requirements is determined by the Promotion Board. The faculty of the Medical School reserves the right to dismiss a student for reasons other than deficient scholarship.

**Requirements for the Degree of Doctor of Medicine.** A candidate for the degree of Doctor of Medicine must complete satisfactorily the curriculum and all other requirements prescribed by the faculty of the Medical School. All candidates for degrees are required to be present at the Commencement Exercises to receive their diplomas in person. The Doctor of Medicine degree is conferred by the University of Oregon upon the recommendation of the faculty of the Medical School.

## Fees and Deposits

FEES AND DEPOSITS paid by students at the University of Oregon Medical School are as follows:

<b>Regular Fees</b>	
Tuition, per term.....	\$ 60.00
Laboratory and course fee, per term.....	113.00
<sup>1</sup> Building fee, per term.....	5.00
<sup>2</sup> Incidental fee, per term.....	10.00
	\$188.00
Nonresident fee, per term (in addition to fees for resident students).....	\$ 91.00
<b>Graduate Fees<sup>1</sup></b>	
For graduate students registered for 7 or more term hours of work per term:	
Tuition.....	\$ 10.00
Laboratory and course fee.....	36.00
<sup>1</sup> Building fee.....	5.00
<sup>2</sup> Incidental fee.....	10.00
	\$ 61.00
For graduate students registered for 6 term hours of work or less.....	
	\$9.00 per term hour (minimum, \$18.00 per term)

<sup>1</sup> Part-time special students (taking 6 hours of work or less) do not pay the building fee.

<sup>2</sup> The incidental fee is for student health service.

<sup>3</sup> Only those students pursuing programs of study toward the M.A., M.S., or Ph.D. degree are classified as graduate students. These students do not pay the nonresident fee.

For graduate students employed as graduate or research assistants or fellows, per term:

<sup>1</sup> Building fee.....	\$ 5.00
<sup>2</sup> Incidental fee.....	10.00
	<hr/>
	\$15.00

#### Deposits

<sup>3</sup> Deposit to reserve place in entering class (applied on tuition).....	\$25.00
<sup>4</sup> Breakage deposit, per year—first and second years.....	15.00
<sup>4</sup> Breakage deposit, per year—graduate students.....	5.00

#### Special Fees

Registration and laboratory fee for special students registered for 6 term hours of work or less.....	\$16.00 per term hour (minimum, \$32.00 per term)
Auditor's fee for lectures, per term hour.....	\$ 5.00
An auditor is a person who has obtained permission to attend classes without receiving academic credit.	
Transcript fee.....	\$ 1.00
One transcript is issued free; a fee of \$1.00 is charged for each additional transcript.	
Evaluation fee.....	\$5.00
The evaluation fee is charged for the evaluation of transcripts submitted with the application for admission; not refundable.	
Late-registration fee, per day.....	\$ 1.00
Students registering after the scheduled registration day of any term pay a late-registration fee of \$1.00 per day. The first penalty day for graduate students is one week after the scheduled registration day.	
Penalty for late payment of tuition and fees, per day.....	25 cents
The first penalty day is one week after registration. Enrollment is canceled if tuition is not paid two weeks after registration day; a \$2.00 fee is required for reinstatement.	
Graduate qualifying-examination fee.....	\$1.00 to \$15.00

#### Microscopes

Medical students are expected to provide themselves with microscopes. Microscopes are available for students who wish to rent them, for a fee of \$4.00 a term.

#### Fee Refunds

Students who withdraw from the Medical School and who have complied with the regulations governing withdrawals are entitled to certain refunds of fees paid, depending on the time of withdrawal. The refund schedule has been established by the Oregon State Board of Higher Education and is on file in the Business Office of the Medical School. All refunds are subject to the following regulations:

(1) Any claim for refund must be made in writing before the close of the term in which the claim originated.

(2) Refunds in all cases are calculated from the date of application for refund and not from the date when the student ceased attending classes, except in unusual cases when formal withdrawal has been delayed through causes largely beyond the control of the student.

<sup>1</sup> Part-time special students (students taking 6 hours of work or less) do not pay the building fee.

<sup>2</sup> The incidental fee is for student-health service.

<sup>3</sup> See ADMISSION AND REQUIREMENTS.

<sup>4</sup> The cost of any damage done by a student to Medical School property is deducted from his deposit; in case the identity of the one responsible cannot be established, a pro-rata charge is made against the entire class of which he is a member.

#### Regulations Governing Nonresident Fee

The Oregon State Board of Higher Education has ruled that any person who comes into the state of Oregon for the purpose of attending one of the institutions under the control of the Board, and who for any reason is not qualified for classification as a resident of the state of Oregon, shall pay the nonresident fee, except: (a) a student who holds a degree from an accredited college or university and is registered in a curriculum other than professional dentistry, law, or medicine, (b) a student attending summer session, (c) a student paying part-time fees, (d) a student whose parent is a regular employee of the Federal government stationed in Oregon, or (e) a student whose father is domiciled in the state of Oregon as defined under (1) below.

The residence or domicile of a student is normally that of his father; if his father is not living, it is normally that of his mother. In case of parents' divorce, the domicile of a student is generally determined by the residence of the parent to whom custody is granted by the court. The domicile of a wife is normally that of her husband; if both are students, the wife's residence status is determined by that of the husband. The domicile of a student who is independent of the relations mentioned above is determined by rule (1) below. An alien cannot begin to establish residence until he has convincingly demonstrated his intention to apply for citizenship.

The Board has established the following rules to be observed in determining the residence status of students:

(1) Residence and domicile are synonymous and domicile shall be considered to be a fixed permanent residence, to which the student has the intention of returning. The fixed permanent residence must normally have been maintained for at least twelve months prior to the school term for which resident classification is sought, and must be a bona-fide residence which the student has no intention of changing when the school period has expired. Proved actual residence and intention to remain must exist simultaneously. Factors used in determining intent include age and family status of the student, residence of near relatives, place of voting, ownership of property, sources of financial support, length of time within the state, record of employment and schooling (intent cannot be demonstrated by school attendance alone).

(2) A student whose official records show his own or his parents' domicile to be outside of Oregon is prima facie a nonresident, and the burden is upon the student to prove the contrary. If his official transcripts of academic record show attendance at a school outside of Oregon, he may be required to furnish further proof of Oregon domicile.

(3) A nonresident at the time of enrollment is held to that classification throughout his attendance as a student, except where he can prove that his or his parent's previous domicile has been abandoned and new one established in Oregon in accordance with these regulations. A resident student will be reclassified as nonresident at any time his Oregon domicile is lost.

## Fellowships, Scholarships, Loan Funds, Prizes

**Noble Wiley Jones Pathology Research Fellowship.** This fellowship, founded in 1919, consisting of the interest on \$5,000 held in trust, is the gift of Dr. Noble Wiley Jones of Portland. It is awarded annually to a medical student or resident on the basis of scholastic ability, training in pathology, and interest in research in this field.

**Kenneth A. J. Mackenzie Memorial Scholarship.** Five \$200 scholarships are awarded annually for the study of medicine, in accordance with the following plan; one \$200 scholarship is awarded each year to the outstanding premedical student at the University of Oregon in the last year of his premedical studies; if the student enters the University of Oregon Medical School and continues to maintain a high scholastic record, the scholarship is renewable for each of his four years of medical training; if the student does not maintain a high scholastic record at the Medical School, his scholarship is transferred to the outstanding member of his Medical School class who has taken his premedical work at the University of

Oregon. The scholarships are a memorial to Dr. Kenneth A. J. Mackenzie, former dean of the Medical School; they are endowed through a bequest from the late Mrs. Mildred Anna Williams.

**Pohl Memorial Scholarships.** These scholarships were endowed in 1936 by a gift of \$5000 from Dr. Esther Pohl Lovejoy, in memory of her husband, Dr. Emil Pohl, and her son, Frederick Clayson Pohl. The original gift has been supplemented by additional annual donations from Dr. Lovejoy, which have increased the endowment to about \$33,000. Awards are made to students of promise in the field of medicine. Two-thirds of the scholarships are given to men students, one-third to women students. Application should be filed with the office of the dean of the Medical School not later than March 1. Scholarships are awarded by the dean upon the recommendation of the Scholarship Committee of the Medical School.

**State Scholarships.** In accordance with special authorization from the Legislature, the State Board of Higher Education awards annually a limited number of scholarships to students in the institutions of the State System who are residents of Oregon, who rank high in scholastic attainment, and who need financial assistance. These scholarships cover tuition. Recipients must pay the building fee, the incidental fee, and special fees. Award of state scholarships to students at the Medical School is made upon recommendation of the dean and the Scholarship Committee of the Medical School. Application should be filed in the office of the dean of the Medical School not later than March 1.

**George H. Strowbridge Memorial Scholarship.** This scholarship consists of the income from a bequest of \$5,000 from Mary S. Muellhaupt in memory of Dr. George H. Strowbridge, a graduate of the University of Oregon Medical School in the Class of 1897. Award is made to a student of the second-, third-, or fourth-year class upon the basis of scholastic attainment and need. Application should be filed in the office of the dean of the Medical School not later than March 1. Scholarships are awarded by the dean upon the recommendation of the Scholarship Committee of the Medical School.

**Frank Ralston Research Student Assistantship.** This assistantship was made available in 1946 through a gift of \$5,000 from Dr. Frank Ralston. Since that time additional gifts have increased the principal of the fund to approximately \$13,000. The funds are devoted to research in glaucoma under the direction of the head of the Department of Ophthalmology.

**Henry Waldo Coe Prize.** This prize, established in 1929, is awarded to a second-, third-, or fourth-year student in the Medical School who presents an essay on a medical subject exhibiting superiority and originality in composition. The prize consists of the interest on a gift of \$1,000 from the late Dr. Henry Waldo Coe.

**George T. Gerlinger Memorial Graduation Gift.** An annual award of \$100 is presented to an outstanding senior from Benton, Linn, or Polk County. The award is supported through a gift presented by Mrs. George T. Gerlinger in 1952 in memory of her husband.

**Joseph Lipschutz Memorial Essay Award.** An award of \$50 is made annually to the fourth-year medical student who writes and presents the best paper in the field of pediatrics. The award is supported by a \$600 fund contributed by private donors as a memorial to Dr. Joseph Lipschutz, graduate of the Medical School who gave his life for his country in World War II.

**National Foundation for Infantile Paralysis Fellowships.** Fellowships for medical students are provided each year by the National Foundation for Infantile Paralysis. Fellowships are available in each of the following fields: research in

the biological and physical sciences related to medicine, physical medicine and rehabilitation, and public health and preventive medicine. Each grant is for \$600 for research during the summer vacation period. Further information may be obtained in the office of the dean.

**Lederle Medical Student Research Fellowships.** The Lederle Laboratories Division of the American Cyanamid Company provides fellowships for outstanding students for research in the basic sciences. The annual grant from the Lederle Laboratories is \$1,200, to be distributed among not more than three students. Further information may be obtained in the office of the dean.

**Ben Selling Loan Fund.** This fund, a bequest from the late Mr. Ben Selling, is administered by Dr. Laurence Selling and the Trust Department of the First National Bank of Portland. Applications for loans are made through the office of the dean of the Medical School.

**W. K. Kellogg Loan Fund.** In May 1942, the W. K. Kellogg Foundation established a \$10,000 loan fund at the University of Oregon Medical School for the financial assistance of medical students. Preference is given to first- and second-year students who have demonstrated scholastic ability, character, and need. The usual loan is \$250. Loans are administered through the office of the dean.

**Leona M. Hickman Student Loan Fund.** This fund, established in 1936, is available, by the terms of the trust, to young men who are actual residents of King County, state of Washington; the fund is administered by the Peoples National Bank of Washington in Seattle as trustee. Application should be made to the Trust Department of the Peoples National Bank of Washington, 1414 Fourth Avenue, Seattle, Washington.

**F. E. Jacobs Memorial Loan Fund.** This loan fund was established in 1950 through gifts from relatives and friends of the late Dr. F. E. Jacobs, a 1929 graduate of the University of Oregon Medical School. Loans are made to senior medical students. The fund at present totals approximately \$800.

**University of Oregon Loan Funds.** Medical school students are eligible for loans from the University of Oregon student loan fund on the same basis as students on the campus at Eugene.

## Student Health

A Student Health Service is maintained to provide both preventive medical procedures and regular therapeutic care. The Health Service is open Monday through Friday, 9:00 to 11:00 a.m. and 12:30 to 3:30 p.m., and on Saturday as posted. The Health Service physician has clinic hours daily beginning at 12:30 p.m. General medical care and hospitalization for acute conditions is provided subject to regulations explained more fully in the Student Health Handbook. The health service fee is \$10.00 per term.

## Fraternal and Honor Societies

CHAPTERS of the following medical fraternities and honor societies are located at the Medical School; Alpha Epsilon Iota, Alpha Kappa Kappa, Nu Sigma Nu, Phi Beta Pi, Alpha Omega Alpha (honorary medical society for both men and women).

## Alumni Association

FOUNDED IN 1913, the Alumni Association of the University of Oregon Medical School also includes graduates of the Willamette University Department of Medicine. The association is devoted to the interests of students and graduates and to the encouragement of scientific and professional progress among members of the medical profession generally. Its membership numbers more than 2,500. In the spring of each year, a three-day scientific meeting is held on the Medical School campus. The officers of the Alumni Association for 1957-58 are:

DR. MORTON J. GOODMAN, Portland.....	President
DR. FAULKNER A. SHORT, Portland.....	Vice-President
DR. RUSSELL B. BRAMBLE, Auburn, Wash.....	Vice-President
DR. EARL W. PARKS, Boise, Idaho.....	Vice-President
DR. JOHN W. SWARTLEY, Roseville, Calif.....	Vice-President
DR. GEORGE C. VARNEY, Springfield.....	Vice-President
DR. JOHN F. LARSELL, Portland.....	Secretary
DR. ARTHUR W. SULLIVAN, Portland.....	Treasurer

## Curriculum in Medicine

THE CURRICULUM IN MEDICINE requires a total of seven years' work beyond high school. The first three years must be satisfactorily completed before admission to the Medical School in Portland. Since facilities for instruction provide for the acceptance of only a limited number of applicants, completion of pre-medical studies does not guarantee admission to the Medical School.

The four years spent in the Medical School in Portland are devoted to the subjects of the regular four-year curriculum in medicine required by law.

The prescribed and recommended subjects for the three premedical years are described under ADMISSION AND REQUIREMENTS. In the first, second, third, and fourth years at the Medical School there are 4,531½ class hours of required work. Descriptions of courses are to be found under the several departmental headings.

### Prescribed Work

The hours listed below do not include examination periods.

	Aggregate class hours			Term hours
	Lecture	Lab.	Clinic	
<b>First Year</b>				
An 411, 412, 413..... Anatomy.....	77	264	....	341
An 414..... Embryology.....	22	66	....	88
An 415..... Histology.....	33	99	....	132
An 511..... Neurology.....	22	66	....	88
BCh 411, 412..... Biochemistry.....	77	165	....	242
Phy 411..... Physiology.....	55	99	....	154
Med 411, 412, 413..... Introduction of Clinical Medicine.....	33	....	....	33
PH 411..... Statistical Methods.....	11	33	....	44
	330	792	....	1,122
<b>Second Year</b>				
Bac 413, 414..... Med. Microbiology & Immunology.....	66	132	....	198
Pth 511, 512..... Pathology.....	66	132	....	198
Pth 513..... Laboratory Diagnosis.....	33	66	....	99
Pth 514..... Gyn. and Obs. Pathology.....	11	22	....	33
Phc 511, 512..... Pharmacology.....	88	66	....	154
Phy 412..... Physiology.....	44	66	....	110
Med 612, 613, 614..... Medicine (Phys. Diag.).....	66	....	66	132
Ps 611..... Neuropathology and Psychopathology.....	11	....	....	11
PH 512, 513..... Epidemiology.....	33	33	....	66
Sur 610, 611..... Introduction to Surgery.....	22	....	....	22
Sur 612..... Healing Processes.....	11	....	....	11
	451	517	66	1,034
				59½

### Third Year

	Aggregate class hours			Term hours
	Lecture	Lab.	Clinic	
<b>PATHOLOGY:</b>				
Pth 515..... Laboratory Neuropathology.....	11	22	....	33
<b>MEDICINE:</b>				
Med 617, 618..... Clerkships.....	....	....	198	198
Med 620, 621..... Medical Clinic.....	....	....	22	22
Med 668, 669, 670..... Practice of Medicine.....	198	....	....	198
Ps 613, 614..... Psychopathology.....	22	....	....	22
Der 611, 612, 613..... Dermatology and Syph. Clinic.....	....	....	33	33
<b>RADIOLOGY:</b>				
Rad 611, 612, 613..... Radiographic Diagnosis.....	33	....	....	33
<b>PUBLIC HEALTH AND PREVENTIVE MEDICINE:</b>				
PH 511..... Principles of Public Health.....	33	....	....	33
<b>DENTAL AND ORAL MEDICINE:</b>				
DM 612..... Dent. Facial Growth and Oral Path.....	11	....	....	11
<b>SURGERY:</b>				
Sur 613, 614..... Minor Surgery.....	22	....	....	22
Sur 615..... Physiotherapy.....	11	....	....	11
Sur 640..... Clerkships.....	....	....	66	66
Sur 643..... Surg. Clinics.....	....	....	66	66
Sur 646, 647, 648..... Clerkship Clinic.....	33	....	....	33
Sur 661, 662..... Anesthesia.....	22	....	....	22
Orp 611..... Orthopedics.....	22	....	....	22
Orp 612, 613..... Surgery of Extremities.....	....	....	44	44
<b>UROLOGY:</b>				
Ur 611..... Lectures.....	11	....	....	11
<b>OPHTH., OTOL., RHIN., LARYN.:</b>				
Eye 611..... Ophth. Lectures.....	11	....	....	11
Ent 611..... O. R. and L. Lectures.....	11	....	....	11
<b>OBSTETRICS:</b>				
Obs 611..... Intro. Lect. and Demon.....	22	....	....	22
Obs 612..... Lec. and Demon.....	22	....	....	22
Obs 613..... Path. Preg., Labor and Puerp.....	22	....	....	22
Obs 614..... Attendance at Deliveries.....	....	....	11	11
Obs 615..... Manikin.....	11	....	....	11
<b>GYNCOLOGY:</b>				
Gyn 611..... Lectures.....	22	....	....	22
Gyn 612..... Lectures.....	22	....	....	22
Gyn 613..... Clerkships.....	....	....	33	33
<b>PEDIATRICS:</b>				
Ped 611, 612, 613..... An. Ph. Hy. Inf. Ch.....	22	....	11	33
Ped 614, 615, 616..... Dis. of Inf. and Ch.....	33	....	....	33
Ped 617..... Clerkships.....	....	....	44	44
Ped 618..... Physical Diagnosis.....	....	....	11	11
	627	22	539	1,188
				70

### Fourth Year

<b>PATHOLOGY:</b>				
Pth 613..... Gen. Path. Conf.....	....	....	33	33
Pth 615..... Tumor Clinic.....	....	....	33	33
Pth 617..... Surgical Pathology.....	....	....	33	33
Pth 618..... Oncology.....	11	11	....	22
<b>MEDICINE:</b>				
Med 624, 625, 626..... Med. Outpatient Clinic.....	....	....	132	132
Med 627..... Med. Clinic.....	....	....	11	11
Med 635..... Tuberculosis Clinic.....	....	....	22	22
Med 636..... Diabetes & Metabol. Outpatient Clinic.....	....	....	22	22
Med 645..... Cardiovascular-Renal Outpatient Clinic.....	....	....	22	22
Med 651..... Medical Jurisprudence.....	11	....	....	11
Med 658..... Allergy Clinic.....	....	....	11	11
Med 661..... Medical Economics.....	11	....	....	11
Med 664..... Tuberculosis Clerkship.....	5½	....	....	5½
Med 671..... Occupational Med. and Toxicology.....	11	....	....	11
Med 672, 673, 674..... Conf. on Medical Therapy.....	....	....	33	33
Med 678, 679..... Tropical Medicine.....	22	....	....	22

	Aggregate class hours			Term hours		
	Lecture	Lab.	Clinic			
Med 680.....	Gastroenterology Outpatient Clinic.....	.....	22	22	1	
Med 681.....	Endocrinology Outpatient Clinic.....	.....	22	22	1	
Med 682.....	Chest Diseases Outpatient Clinic.....	.....	22	22	1	
Med 683.....	Hematology Outpatient Clinic.....	.....	22	22	1	
Med 684.....	Allergy Outpatient Clinic.....	.....	22	22	1	
Neu 614.....	Nervous Dis. Outpatient Clinic.....	.....	22	22	1	
Neu 615.....	Nerv. and Mental Clinic.....	.....	11	11	½	
Ps 615.....	Psychiatry Outpatient Clinic.....	.....	22	22	1	
Ps 619.....	Psychoses.....	11	.....	11	½	
Der 615.....	Dermatology.....	.....	33	33	1½	
<b>SURGERY:</b>						
Sur 617.....	Outpatient Clinic.....	.....	33	33	1½	
Sur 620, 621, 622.....	Surgical Conference.....	.....	33	33	1½	
Sur 623, 624, 625.....	Gen. Surg. Clinic.....	.....	66	66	3	
Sur 663.....	Clerkship in Anesthesia.....	.....	16	16	½	
Orp 616.....	Orthopedics Outpatient Clinic.....	.....	33	33	1½	
<b>UROLOGY:</b>						
Ur 612, 613.....	Clinic.....	.....	22	22	1	
Ur 614.....	Outpatient Clinic.....	.....	33	33	1½	
<b>OPHTH., OTOL., RHIN., LARYN.:</b>						
Eye 612.....	Ophth. Outpatient Clinic.....	.....	33	33	1½	
Eye 613.....	Ophth. Lecturc.....	11	.....	11	½	
Ent 612.....	O. R. and L. Outpatient Clinic.....	.....	33	33	1½	
Ent 613.....	O. R. and L. Lectures.....	11	.....	11	½	
<b>OBSTETRICS:</b>						
Obs 616.....	Clinic.....	.....	22	22	1	
Obs 617.....	Outpatient Service (participation in six deliveries).....	.....	33	33	1½	
Obs 618.....	Postnatal Clinic.....	.....	11	11	½	
Obs 619, 620, 621.....	General Clinic.....	.....	33	33	1½	
Obs 622.....	Clerkships.....	.....	11	11	½	
<b>GYNECOLOGY:</b>						
Gyn 614.....	Outpatient Clinic.....	.....	22	22	1	
Gyn 615.....	Operative Clinic.....	.....	11	11	½	
<b>PEDIATRICS:</b>						
Ped 619.....	Outpatient Clinic.....	.....	44	44	2	
Ped 622, 623, 624.....	Dis. Inf. and Child.....	33	.....	33	1½	
		137½	11	1,039	1,187½	56

## Recapitulation

	Aggregate class hours			Term hours		
	Lecture	Laboratory	Clinic			
First Year.....	330	792	.....	1,122	54	
Second Year.....	451	517	66	1,034	59½	
Third Year.....	627	22	539	1,188	70	
Fourth Year.....	137½	11	1,039	1,187½	56	
		1,545½	1,342	1,644	4,531½	239½

## Prescribed Work by Departments

Preclinical	Aggregate class hours
Anatomy.....	649
Bacteriology.....	198
Biochemistry.....	242
Physiology.....	264
Pharmacology.....	154
Pathology.....	330
Total hours, preclinical.....	1,837
<b>Clinical</b>	
Pathology.....	154
Medicine:	
General Medicine.....	984½
Nervous and Mental Diseases.....	33

<b>Medicine (cont.):</b>	
Psychiatry.....	66
Dermatology.....	66
Medical Jurisprudence.....	11
Medical Economics.....	11
Dental Medicine.....	11
Radiology.....	33
Public Health.....	143
<b>Surgery:</b>	
General Surgery.....	396
Urology.....	71
Orthopedic Surgery.....	99
Ophthalmology.....	55
Otology, Rhinology, Laryngology.....	55
Gynecology.....	110
Obstetrics.....	198
Pediatrics.....	198
Total hours, clinical.....	2,694½
Total hours, prescribed work.....	4,531½

# Description of Courses

## Course Numbering System

MEDICAL SCHOOL courses are numbered in accordance with the uniform course-numbering system of the Oregon State System of Higher Education. This numbering system, as it applies to the Medical School courses, is as follows:

- 400-499. Upper-division courses primarily for first-year students in medicine, but to which graduate students may be admitted on approval of the graduate adviser and department head concerned.
- 500-599. Courses primarily for students in basic medical science, but to which graduate students may be admitted on approval of graduate adviser and department head concerned.
- 600-699. Courses that are highly professional in nature may count toward a professional degree, but cannot apply toward an advanced academic degree (M.A., M.S., or Ph.D.).

Certain numbers are reserved for courses that may be taken through successive terms under the same course number, credit being granted according to the amount of acceptable work done. These course numbers are as follows:

- |               |                             |
|---------------|-----------------------------|
| 501. Research | 505. Reading and Conference |
| 503. Thesis   | 507. Seminar                |

## Basic Science Departments

### Anatomy

#### REQUIRED COURSES

##### FIRST YEAR

- An 411, 412, 413. **Gross Anatomy.** 7 hours fall, 5 hours winter, 3 hours spring.  
Fall: lectures and quizzes, 3 hours a week; laboratory, 12 hours a week. Winter: lectures and quizzes, 2 hours a week; laboratory, 9 hours a week. Spring: lectures and quizzes, 2 hours a week; laboratory, 3 hours a week. 341 hours. Drs. Pearson, Bacon, and Stotler.
- An 414. **Embryology.** 4 hours fall.  
Lectures and quizzes, 2 hours a week; laboratory, 6 hours a week; 88 hours. Drs. Bacon and Gunberg.
- An 415. **Histology.** 6 hours winter.  
Lectures and quizzes, 3 hours a week; laboratory, 9 hours a week; 132 hours. Drs. Gunberg and Tunturi.
- An 511. **Neurology and Organs of Special Senses.** 4 hours spring.  
Prerequisites: An 411, An 415. Lectures, 2 hours a week; laboratory, 6 hours a week; 88 hours. Drs. Pearson, Stotler, and Tunturi.

#### ELECTIVE COURSES

- An 416. **Microscopic Technique.** 2 hours spring.  
Limited to 8 students. Registration only after consultation with instructor. Laboratory, 6 hours a week; 66 hours.
- An 501. **Research.** Any term, hours to be arranged.  
Open to qualified students in any branch of anatomy upon approval of the instructors. Staff.

- An 505. **Reading and Conference.** Any term, hours to be arranged.  
Staff.
- An 507. **Seminar and Journal Club.** Any term, hours to be arranged.  
Anatomical staff and advanced students.
- An 514. **Special Dissections.** Term and hours to be arranged.  
Registration limited by available material. Prerequisites: An 411, 412, 413.
- An 611. **Applied Anatomy.** 2 hours spring.  
Prerequisites: An 411, 412, 413. Lectures and demonstrations, 2 hours a week; 22 hours. Limited to 30 students. Drs. Pearson, Bergquist, DeWeese, Frische, Garnjobst, Hardwick, Hodges, W. Krippaehne, and Snell.

## Bacteriology

#### REQUIRED COURSES

##### SECOND YEAR

- Bac 413, 414. **Medical Microbiology and Immunology.** 5 hours each term, fall and winter.  
Lectures and recitations, 3 hours a week; laboratory, 6 hours a week; 198 hours. Drs. Frisch, Oginsky, Veazie, and Miss Brownlee.

#### ELECTIVE COURSES

- Bac 501. **Research in Bacteriology and Immunology.** Hours to be arranged.  
Drs. Frisch, Oginsky, and Veazie.
- Bac 505. **Reading and Conference.** Any term, hours to be arranged.  
Drs. Frisch, Oginsky, and Veazie.
- Bac 507. **Seminar in Bacteriology and Immunology.** 1 hour any term.  
Meetings of the departmental staff and assistants with a number of specially qualified students to discuss the newer developments in the science as they appear in the current periodical literature. Topics assigned and individual reports read at meetings of the class. Open to a limited number of students. Meetings held once each week for one hour. Drs. Frisch, Oginsky, and Veazie.
- Bac 508. **Advanced Bacteriology and Immunology.** Any term, hours to be arranged.  
A course for medical, special, and graduate students who wish to pursue any phase of the subject beyond Bac 414. Drs. Frisch, Oginsky, and Veazie.

## Biochemistry

#### REQUIRED COURSES

##### FIRST YEAR

- BCh 411, 412. **Biochemistry.** 6 hours each term, fall and winter.  
Fall: lectures, 4 hours a week; laboratory, 6 hours a week. Winter: lectures, 3 hours a week; laboratory, 9 hours a week. 242 hours. Drs. West, Beatty, Mason, Peterson, Todd, Van Bruggen, and assistants.

#### ELECTIVE COURSES

- BCh 501. **Biochemistry Research.** Any term, hours to be arranged.  
Drs. West, Aldrich, Beatty, Mason, Peterson, Todd, and Van Bruggen.
- BCh 505. **Reading and Conference.** Any term, hours to be arranged.  
Drs. West, Beatty, Mason, Peterson, Todd, and Van Bruggen.
- BCh 507. **Seminar.** Any term, hours to be arranged.

- BCh 512. **Advanced Biochemistry.** Any term, hours to be arranged.  
The work consists of biochemical preparations, selected methods of analysis, assigned readings, and conferences. Prerequisites: BCh 411, 412. Drs. West, Beatty, Fellman, Labbe, Mason, Peterson, Todd, and Van Bruggen.  
*Laboratory Diagnosis.* Required for second-year students; see Pth 513.

## Pathology

### REQUIRED COURSES

#### SECOND YEAR

- Pth 511. **General Pathology.** 5 hours fall.  
Study of prepared slides supplemented by experiments; fresh and museum specimens; kodachrome slides and scopicon orientation: Lectures and recitations, 3 hours a week; laboratory, 6 hours a week; 99 hours. Drs. Hunter, Niles, and Oyamada.
- Pth 512. **General Pathology.** 5 hours winter.  
Lectures, 3 hours a week; laboratory, 6 hours a week; 99 hours. Drs. Hunter, Niles, and Oyamada.
- Pth 513. **Laboratory Diagnosis.** 5 hours spring.  
Lectures, 3 hours a week; laboratory, 6 hours a week; 99 hours. Dr. Gron-dahl and assistants.
- Pth 514. **Gynecological and Obstetrical Pathology.** 1½ hours spring.  
Lectures, 1 hour a week; laboratory, 2 hours a week; 33 hours. Drs. Benson and Sneed.

#### THIRD YEAR

- Pth 515. **Laboratory Neuropathology.** 1½ hours fall.  
Continuation of Ps 611; laboratory work and demonstrations dealing with inflammatory reactions and degenerative conditions, with emphasis on general paresis, tabes dorsalis, and brain tumors. Correlative lectures in neurophysiology and clinical neurology. Gross pathological specimens and demonstrations are used in illustrating the diseases studied. Lectures, 1 hour a week; laboratory, 2 hours a week; 33 hours. Dr. Minckler and assistants.

#### FOURTH YEAR

- Pth 613. **General Pathology Conference.** ½ hour each term.  
One hour a week throughout the year; 33 hours. Staffs of the departments of Pathology, Medicine, Surgery, Obstetrics and Gynecology, and Pediatrics.
- Pth 615. **Tumor Clinic.** ½ hour each term.  
One hour a week throughout the year; 33 hours. Dr. Fox.
- Pth 617. **Surgical Pathology.** 1½ hours.  
Four hours a week for 5½ weeks, two hours a week for 5½ weeks, in sections; 33 hours. Drs. Hunter, Losli, Menne, Niles, Nohlgren, Oyamada, and Queen.
- Pth 618. **Oncology.** 1 hour spring.  
Systematic study of cancer. Historical development of knowledge; experimental development of cancer; characteristics of human cancer; statistical information; present cancer problems; recent developments; organizational attack; methods of diagnosis and therapy; patient's and physician's responsibilities. Round-table instruction, with illustrations. Lecture, 1 hour a week; laboratory, 1 hour a week; 22 hours. Drs. Queen and Meek.

*Medical Jurisprudence.* Required for fourth-year students; see Med 651.

### ELECTIVE COURSES

- Pth 501. **Research.** Any term, hours to be arranged.  
Open to specially qualified students. Drs. Hunter, Meek, and Oyamada.

- Pth 505. **Reading and Conference.** Any term, hours to be arranged.  
Drs. Meek and Niles.
- Pth 516. **Advanced Systemic Pathology.** Any term, hours to be arranged.  
Study of the detached pathology of one system. Drs. Hunter, Meek, Oyamada, and Queen.
- Pth 517. **Advanced Pathological Histology.** Any term, hours to be arranged.  
Systematic study of microscopic sections of autopsy tissues. Open to students who have had at least one term's work in pathology. Drs. Hunter, Niles, Oyamada, and Queen.
- Pth 518. **Special Pathology of Heart and Circulation.** Spring, hours to be arranged.  
Dr. Hunter.
- Pth 614. **Attendance at Autopsies.** Fall or winter, hours to be arranged.  
Opportunity offered to students to elect autopsy attendance with instruction. Such students are required to assist and make detailed suggestions. Limited to 20 students. Drs. Meek, Niles, and Oyamada.
- Pth 616. **Tumor Clinic.** ½ hour, one section each term.  
Attendance at tumor clinic at U.S. Veterans Hospital. Two hours a week for 5½ weeks; 11 hours. Drs. Menne and Losli.

## Pharmacology

### REQUIRED COURSES

#### SECOND YEAR

- Phc 511. **Systematic Pharmacology and Prescription Writing.** 5 hours winter.  
Lectures and quizzes, 4 hours a week; laboratory, 3 hours a week; 77 hours. Drs. David and McCawley.
- Phc 512. **Systematic Pharmacology and Pharmacodynamics.** 5 hours spring.  
Lectures and quizzes, 4 hours a week; laboratory, 3 hours a week; 77 hours. Drs. David and McCawley.

### ELECTIVE COURSES

- Phc 501. **Research.** Any term, hours to be arranged.  
Students who are properly qualified and who can devote an adequate amount of time to the work are encouraged to pursue original investigations of pharmacological problems. Drs. David and McCawley.
- Phc 505. **Reading and Conference.** Any term, hours to be arranged.  
Dr. McCawley.
- Phc 507. **Seminar.** 2 hours spring.  
Open to third- and fourth-year students; 2 hours a week; 22 hours. Drs. David and McCawley.
- Phc 514. **Toxicological Analysis.** 2 hours spring.  
(Second year.) Lectures and quizzes, 1 hour a week; laboratory, 3 hours a week; 44 hours. Limited to 16 students. Drs. David and McCawley.

## Physiology

### REQUIRED COURSES

#### FIRST YEAR

- Phy 411. **Human Physiology.** 8 hours spring.  
Introductory general physiology, digestive tract, endocrine glands, renal physiology, circulation, respiration, nervous system and special senses. Lectures, 5 hours a week; laboratory, 9 hours a week; 154 hours. Drs. Brookhart, Blake, Rampone, Ross, and Trainer.



## SECOND YEAR

Phy 412. **Human Physiology.** 6 hours fall.

Special laboratory and library projects on advanced human and mammalian physiology. Lectures, 4 hours a week; laboratory, 6 hours a week; 110 hours. Drs. Brookhart, Blake, Rampone, Ross, and Trainer.

## ELECTIVE COURSES

Phy 501. **Research.** Any term, hours to be arranged.

Prerequisite: Phy 411, Phy 412. Drs. Brookhart, Blake, Rampone, and Ross.

Phy 505. **Reading and Conference.** Any term, hours to be arranged.

Prerequisite: Phy 411, Phy 412. Drs. Brookhart, Blake, Rampone, and Ross.

Phy 507. **Seminar.** Any term, hours to be arranged.

Prerequisite: Phy 411, Phy 412.

Phy 514. **History of Physiology.** 1 hour winter.

One hour a week; 11 hours. Limited to 10 students.

## Clinical Departments

### Medicine

#### Internal Medicine

##### REQUIRED COURSES

## FIRST YEAR

Med 411, 412, 413. **Introduction to Clinical Medicine.** 1 hour each term.

An introductory course consisting of lectures and clinical demonstrations to orient the student in medicine and correlate the basic sciences with clinical problems. Lectures, 1 hour a week; 33 hours. Drs. Benson, Hill, Lewis, and Livingston.

## SECOND YEAR

Med 612, 613, 614. **Physical Diagnosis.** 3 hours each term.

Lectures, 2 hours a week; demonstrations, 2 hours a week; 132 hours. Drs. Lewis, Burgner, Gould, Griswold, Haney, Lindgren, Donald Olson, Pitcairn, and Philip Selling.

## THIRD YEAR

Med 617, 618. **Clinical Clerkship.** 6½ hours each term.

Students are assigned to the medical service in the Multnomah Hospital and Veterans Hospital, one term in each hospital, in sections. Nine hours a week; 198 hours. Drs. Allen, Bergman, Conrad Carter, Chase, Crommelin, Dick Dygert, Gilmore, Gould, Horenstein, Krygier, Lindgren, McMahon, MacDaniels, Medved, Joseph, Miller, Murphy, Paquet, Heyes, Peterson, Pierson, Richards, Ritzmann, Robins, Philip Selling, Soelling, Janice Stevens, David Taylor, and Vidgoff.

Med 620, 621. **Medical Clinic.** ½ hour each term.

Multnomah Hospital. One hour a week, in sections; 22 hours. Drs. Forster, Haney, and Perlman.

Med 668, 669, 670. **Practice of Medicine.** 6 hours each term.

Systematic study of various medical disorders. The subject is divided into natural groups according to systems, each field being discussed separately with emphasis on anatomy, physiology, clinical manifestations, and therapy. Lectures, 6 hours a week; 198 hours. Drs. Lewis, Boylston, Brill, Cohen, Fitzgibbon, Frisch, Goodman, Greer, Griswold, Haney, Heller, Kammer,

Koler, Krygier, Labby, Long, Lowell, Maurice, Moore, Osgood, Pitcairn, Rogers, Rose, Edward Rosenbaum, Schneider, Schwartz, Seaman, Philip Selling, Speros, Swank, and Tuhy.

## FOURTH YEAR

Med 624, 625, 626. **Medical Outpatient Clinic.** 2 hours each term.

Four hours a week; 132 hours. Drs. Bachman, Beall, Berg, Blanchard, Blickle, Burgner, Deitz, Fisher, Flanery, Galen, Hampton, Haney, Hare, Harrison, Hoyt, Hurst, Kokko, Koler, Marion Krippaehne, Larson, MacDaniels, McGreevey, Murphy, Richards, Wayne Rogers, Seaman, Philip Selling, Seufert, Tatum, David Taylor, Trainer, Vidgoff, Richard Wilson, and Woodworth.

Med 627. **Medical Clinic.** ½ hour fall.

Tuberculosis Hospital. Diseases of the chest. One hour a week; 11 hours. Drs. Conklin and Lowell.

Med 635. **Tuberculosis Clinic.** 1 hour, one section each term.

Outpatient Clinic. Four hours a week for 5½ weeks, in sections; 22 hours. Drs. Speros and Tuhy.

Med 636. **Diabetes and Metabolism Division, Outpatient Clinic.** 1 hour, one section each term.

Outpatient Clinic, clinical conference. Two hours a week, in sections; 22 hours. Drs. Labby, Crommelin, Horenstein, Kammer, Livingstone, Schneider, and Stephens.

Med 645. **Cardiovascular-Renal Disease Division, Outpatient Clinic.** 1 hour, one section each term.

Outpatient Clinic, clinical conference. Two hours a week, in sections; 22 hours. Drs. Griswold, Berger, Coffen, Davis, Galen, Rose, Schwartz, Swett, Underwood, and Welborn.

Med 651. **Medical Jurisprudence.** ½ hour winter.

One hour a week; 11 hours. Dr. Homer Harris.

Med 658. **Allergy Clinic.** 1 hour spring.

Clinic, 1 hour a week; 11 hours. Drs. Matteri and Perlman.

Med 661. **Medical Economics.** ½ hour spring.

Lectures, 1 hour a week; 11 hours.

Med 664. **Tuberculosis Clerkship.** ½ hour, one section each term.

Tuberculosis Hospital. One hour a week for 5½ weeks, in sections; 5½ hours. Drs. Conklin, Lowell, and Pitcairn.

Med 671. **Occupational Medicine and Toxicology.** 1 hour fall.

Disorders arising from exposure to various toxic substances encountered in industry, and disorders resulting from the use of poisons. Lectures, 1 hour a week; 11 hours. Dr. David.

Med 672, 673, 674. **Conference on Medical Therapy.** ½ hour each term.

Conferences on therapy. One hour a week; 33 hours. Drs. Lewis, Labby, and staff.

Med 678, 679. **Tropical Medicine.** 1 hour each term, winter and spring.

Diagnosis and clinical and therapeutic aspects of tropical diseases. One hour a week; 22 hours. Dr. Riddle.

Med 680. **Gastroenterology Division, Outpatient Clinic.** 1 hour, one section each term.

Outpatient Clinic, clinical conference. Two hours a week, in sections; 22 hours. Drs. Field, Healy, Krakauer, Littlehales, Long, Medved, Riley, and Soelling.

- Med 681. **Endocrinology Division, Outpatient Clinic.** 1 hour, one section each term.  
Outpatient Clinic, clinical conference. Two hours a week, in sections; 22 hours. Drs. Greer, Aumann, Harvey, Heller, Kammer, Labby, Livingstone, Rogers, and Schneider.
- Med 682. **Chest Diseases Division, Outpatient Clinic.** 1 hour, one section each term.  
Outpatient Clinic, clinical conference. Two hours a week, in sections; 22 hours. Drs. Tuhy, Cohen, Conklin, Samuel Diack, Galante, Goodman, Lowell, Maurice, D. Olson, Pitcairn, and Speros.
- Med 683. **Hematology Division, Outpatient Clinic.** 1 hour, one section each term.  
Outpatient Clinic, clinical conference. Two hours a week, in sections; 22 hours. Drs. Osgood, Koler, Pirofsky, and Seaman, and Mrs. Speros.
- Med 684. **Allergy Division, Outpatient Clinic.** 1 hour, one section each term.  
Outpatient Clinic, clinical conference. Two hours a week, in sections; 22 hours. Drs. Merle Moore, Matteri, Reed, and Robins.

## ELECTIVE COURSES

- Med 501. **Research in Hematology.** Any term, hours to be arranged.  
Dr. Osgood.
- Med 505. **Reading and Conference.** Any term, hours to be arranged.  
For third- and fourth-year students. Dr. Osgood.
- Med 601. **Research.** Any term, hours to be arranged.
- Med 607. **Seminar in Medicine.** Any term, hours to be arranged.
- Med 649. **Tuberculosis Control Clinic for Children.** ½ hour any term.  
(Fourth year). Two hours a week for 5½ weeks; 11 hours. Limited to 4 students. Drs. Speros and Maurice.
- Med 650. **Rheumatology Division, Outpatient Clinic.** 1 hour each term.  
Outpatient Clinic, clinical conference and demonstration. Two hours a week, in sections; 22 hours. Limited to nine students a term. Drs. Bachman, Rinehart, Edward Rosenbaum, and David Taylor.
- Med 652. **Renal Rounds.** 1 hour, one section each term.  
Intensive study of selected cases of renal disease in the Multnomah and Medical School Hospitals. Students work in pairs and study assigned patients. Conferences and discussions concerning the diagnosis, treatment, and basic mechanisms of the disorders of these and other similar patients conducted on rounds. Patient study two hours a week at any convenient time; rounds two hours a week; 44 hours. Limited to two pairs of students per term. Drs. Blake and Philip Selling.
- Med 660. **Outpatient Clinic.** Any term, hours to be arranged in accordance with the requirements in the regular Outpatient Clinic course.  
(Fourth year.) Elective credit for completion of clinical work in the department in addition to that required in the regular Outpatient Clinic course.

## Neurology

## REQUIRED COURSES

## FOURTH YEAR

- Neu 614. **Neurology Division, Outpatient Clinic.** 1 hour, one section each term.  
Outpatient Clinic, clinical conference. Two hours a week, in sections; 22 hours. Drs. Swank, James Austin, Conrad Carter, Dow, Dowling, Engel, Robert Johnson, and Janice Stevens.
- Neu 615. **Clinic.** ½ hour, one section each term.  
1 hour a week; 11 hours. Drs. Swank and Dow.

## Dermatology

## REQUIRED COURSES

## THIRD YEAR

- Der 611, 612, 613. **Dermatology Clinic.** ½ hour each term.  
Presentation of clinical cases, with detailed discussion of etiology, symptomatology, and differential diagnosis. One hour a week; 33 hours. Drs. Fitzpatrick, Chenoweth, Daniels, A. Frisch, Grondahl, S. Osgood, Saunders, Sullivan, and Walker.

## FOURTH YEAR

- Der 615. **Clinical Lecture and Conference Course.** 1½ hours, one section each term.  
Utilization of outpatient material; clinical and microscopic diagnostic procedures: general therapy. Six hours a week for 5½ weeks, in sections; 33 hours. Drs. Fitzpatrick, Chenoweth, and Saunders.

## Dental and Oral Medicine

## REQUIRED COURSE

## THIRD YEAR

- DM 612. **Dental Facial Growth and Oral Pathology.** 1 hour fall.  
The course is designed to give the medical student an appreciation of significant growth and developmental changes in dentition; the nature and systemic relation of oral disease; and the reciprocal relation of systemic disturbance upon the oral tissues. A survey of oral disease is provided by textbook reading; the lectures give special emphasis on dental caries, oral foci of infection, periodontal disease, inflammatory conditions of the oral mucosa, and diagnostic method, including oral radiography. One hour a week; 11 hours. Dr. Noyes.

## Psychiatry

## REQUIRED COURSES

## SECOND YEAR

- Ps 611. **Lectures: Neuropathology and Psychopathology.** 1 hour winter.  
A series of lectures covering: (1) organic diseases of the central nervous system; (2) the fundamentals of psychopathology, including anxiety, mental depression, obsessions, compulsions, pathological sleep, false belief, sensory imagination, pathological sex, pathological memory, etc. One hour a week; 11 hours. Drs. Dickel, Dixon, and Gerhard Haugen.

## THIRD YEAR

- Ps 613, 614. **General Psychiatric Lectures.** ½ hour each term, winter and spring.  
Lectures. Psychopathology and symptoms of various mental reaction types and behavior disorders of children. One hour a week; 22 hours. Drs. Ivor Campbell, Dickel, Dixon, Evans, Gerhard Haugen, Langdon, and Shanklin.  
*Laboratory Neuropathology* (See Pth 515).

## FOURTH YEAR

- Ps 615. **Psychiatry Division, Outpatient Clinic.** 1 hour, one section each term.  
Outpatient Clinic, clinical conference. Two hours a week, in sections; 22 hours. Drs. Saslow, Burkes, Ivor Campbell, Dickel, Dixon, Evans, Gerhard Haugen, Wendell Hutchens, Jens, Langdon, Matarazzo, and Shanklin.
- Ps 619. **Psychoses.** ½ hour fall.  
Lectures and demonstrations of various psychoses from the viewpoint of mental mechanism, etiology, symptomatology, diagnosis, and treatment. One hour a week; 11 hours. Drs. Ivor Campbell, Burkes, Dickel, Dixon, Evans, Gerhard Haugen, and Shanklin.

## Radiology

### REQUIRED COURSES

#### THIRD YEAR

Rad 611, 612, 613. **Radiographic Diagnosis.** ½ hour each term.

Lectures and quizzes. Consideration of the interpretation of pathology as depicted on the radiograph and fluorescent screen; the medical, surgical, and dental application of roentgenology in diagnosis; the uses, the limitations, and the dangers. One hour a week; 33 hours. Dr. Dotter and staff.

#### ELECTIVE COURSE

Rad 615. **Radiographic Diagnosis.** Any term, hours to be arranged.  
(Fourth year.) Practical experience in all phases of radiographic diagnosis. Limited to 2 students. Dr. Dotter.

## Public Health and Preventive Medicine

### REQUIRED COURSES

#### FIRST YEAR

PH 411. **Statistical Methods as Applied to Medicine.** 2 hours spring.  
Introduction to the principles of scientific method and statistical reasoning useful in the practical problems of medical research, practice, and administration. Lectures, 1 hour a week; laboratory, 3 hours a week; 44 hours. Drs. Weinzirl, Hopkins, and staff.

#### SECOND YEAR

PH 512. **Epidemiology.** 1 hour winter.  
Clinical and epidemiologic aspects of communicable diseases, correlated with bacteriology. Lectures and recitations, 1 hour a week; 11 hours. Dr. Weinzirl.

PH 513. **Epidemiology.** 3 hours spring.  
Principles of epidemiology illustrated by clinical and epidemiologic aspects of common communicable and other diseases. Lectures and recitations, 2 hours a week; laboratory or clinic, 3 hours a week; 55 hours. Drs. Weinzirl, F. S. Hansen, Hopkins, Meador, and S. Osgood.

#### THIRD YEAR

PH 511. **Principles of Public Health.** 3 hours winter.  
The general principles of public health activities; control of communicable diseases; organization of Federal, state, local, and other health agencies; elements of infant, school, and industrial hygiene; vital statistics. Lectures, recitations, and discussions, 3 hours a week; 33 hours. Drs. Weinzirl, Erickson, F. S. Hansen, and Meador.

#### ELECTIVE COURSES

PH 501. **Research.** Any term, hours to be arranged.  
PH 505. **Reading and Conference.** Any term, hours to be arranged.  
PH 507. **Seminar.** Hours to be arranged.

## Surgery

### General Surgery

#### REQUIRED COURSES

#### SECOND YEAR

Sur 610, 611. **Introduction to Surgery.** 1 hour each term, winter and spring.  
Designed to give the student an appreciation of surgery, the history of its

achievements and its limitations, the principles underlying surgical techniques, and the application of the basic sciences to surgical practice. Lectures, 1 hour a week; 22 hours. Dr. Livingston.

Sur 612. **Healing Processes.** 1 hour spring.

The reaction of soft parts and bone to injury, infection, and tumors; the principles of surgical treatment. Lectures, 1 hour a week; 11 hours. Dr. Wiley.

#### THIRD YEAR

Sur 613, 614. **Minor Surgery.** 1 hour each term, fall and winter.

Lectures and demonstrations concerning minor surgical conditions and their treatment. Lectures, 1 hour a week; 22 hours. Dr. Johnsrud.

Sur 615. **Physiotherapy.** ½ hour spring.

Lectures and demonstrations, 1 hour a week; 11 hours. Dr. Jones.

Sur 640. **Clinical Clerkship.** 3 hours.

Students are assigned to the surgical service in the Multnomah Hospital or Veterans Hospital for one term in sections. Six hours a week; 66 hours. Drs. Bassett, Best, Hayes, Higginson, Inahara, Prentiss Lee, Kent Markee, Patton, Reiner, Wiley, Nathaniel Wilson, and Wise.

Sur 643. **Surgical Clinic.** 3 hours.

Multnomah Hospital or Veterans Hospital, one term in sections, in connection with clinical clerkship. Six hours a week; 66 hours. Drs. Cherry, Laurence Cohen, Gardner, Gill, Howard, Orville Jones, McMurray, Martzloff, Raaf, Rosenblatt, Wise, and Werner Zeller.

Sur 646, 647, 648. **Clerkship Clinic.** ½ hour each term.

Conference course, covering surgical clerkship and assignments. One hour a week; 33 hours. Drs. William Krippaehne, Marcum, and Clare Peterson.

#### FOURTH YEAR

Sur 617. **Outpatient Clinic.** 1½ hours.

Two hours a week for one term and two hours a week for 5½ weeks; 33 hours. Drs. Battalia, Bentley, Best, Nathan Campbell, Canaparoli, Cleland, Clisby, DeWitt, Eisendorf, Groshong, Hardwick, Harpole, Hayes, David Mason, Mathieson, Nisbet, Packard, Puziss, Rippey, William Rosenbaum, Shields, Shlim, Smalley, Rudolph Stevens, Tinker, and Uhle.

Sur 620, 621, 622. **Surgical Conference.** ½ hour each term.

One hour a week, 33 hours. Drs. Adams, Harvey Baker, Bassett, Allen Boyden, Edward Davis, Gurney, Hardwick, Frederick Haugen, Hodges, Tyra Hutchens, Kenneth Livingston, Martzloff, Nichols, Raaf, Rosenblatt, Seabrook, Snell, Steffanoff, Wayson, and Wise.

Sur 623, 624, 625. **General Surgical Clinic.** 1 hour each term.

Multnomah Hospital. Two hours a week; 66 hours. Dr. Peterson.

#### ELECTIVE COURSES

Sur 601. **Research.** Any term, hours to be arranged.

Sur 627. **Proctology Lectures.** ½ hour spring.

(Third year.) One hour a week; 11 hours. Dr. Laird.

Sur 635. **Differential and Regional Neurosurgical Diagnosis and Therapeutics.** ½ hour winter or spring.

(Fourth year.) Lectures and demonstrations, 1 hour a week; 11 hours. Dr. Raaf.

Sur 660. **Outpatient Clinic.** Any term, hours to be arranged in accordance with the requirements in the regular Outpatient Clinic course.

(Fourth year.) Elective credit for completion of clinical work in the department in addition to that required in the regular Outpatient Clinic course.

**Orthopedic Surgery**

## REQUIRED COURSES

## THIRD YEAR

- Orp 611. **Orthopedic Surgery.** 1 hour fall.  
Lectures, 2 hours a week; 22 hours. Dr. Snell.
- Orp 612, 613. **Surgery of the Extremities.** 1 hour each term, winter and spring.  
Systematic lectures and demonstrations dealing chiefly with fractures and other traumatic disorders of the extremities. The upper extremity is covered in one term, the lower in the other term. Lectures and clinic, 2 hours a week; 44 hours. Drs. Carlson, Chuinard, and Snell.

## FOURTH YEAR

- Orp 616. **Orthopedic Outpatient Clinic.** 1½ hours, one section each term.  
Two hours three times a week for 5½ weeks, in sections; 33 hours. Drs. Snell, Abele, Begg, Richard Berg, Thomas Boyden, Buckmaster, Paul Campbell, Cherry, Chumard, Laurence Cohen, Harold Davis, Joe Davis, Gantenbein, Gill, Richard Hopkins, Orville Jones, Langston, McMurray, James Mason, Merrifield, Noall, Rankin, Robinson, Short, and Frank Smith.

## ELECTIVE COURSE

- Orp 615. **Orthopedic Ward Walk.** 1 hour any term.  
(Fourth year.) Shriner's Hospital for Crippled Children. General Ward rounds in the hospital, with discussion of the cases and methods of orthopedic treatment in deformities of children. Two hours a week; 22 hours. Drs. Lucas and Noall.

**Urology**

## REQUIRED COURSES

## THIRD YEAR

- Ur 611. **Diseases Affecting the Genito-Urinary Tract.** ½ hour spring.  
Lectures, 1 hour a week; 11 hours. Dr. Hodges.

## FOURTH YEAR

- Ur 612, 613. **Urological Clinic.** ½ hour each term, fall and winter.  
Lectures and clinic, 1 hour a week; 22 hours. Drs. Hodges, Montgomery, and Paull.
- Ur 614. **Outpatient Clinic.** 1½ hours, one section each term.  
Six hours a week for 5½ weeks, in sections; 33 hours. Drs. Hodges, Beardslay, Clark, Thomas Davis, Hott, Larsell, Rustin, and Schwiebinger.

**Anesthesiology**

## REQUIRED COURSES

## THIRD YEAR

- Sur 661, 662. **Lectures on Anesthesia.** ½ hour each term, winter and spring.  
Lectures on anesthesia, with demonstration and description of equipment employed; discussion of history, physiology, signs and methods of anesthesia; the various agents. Lectures, 1 hour a week; 22 hours. Dr. Frederick Haugen.

## FOURTH YEAR

- Sur 663. **Clerkship in Anesthesia.** ½ hour, one section each term.  
Observation of anesthetic procedures in the operating room, and directed supervision in assisting the administration of the various types of anesthesia. Four hours a day for 3 days; 12 hours. Dr. Frederick Haugen and staff.

**Ophthalmology**

## REQUIRED COURSES

## THIRD YEAR

- Eye 611. **Eye.** ½ hour spring.  
Lectures and quizzes, 1 hour a week; 11 hours. Dr. Swan.

## FOURTH YEAR

- Eye 612. **Eye Outpatient Clinic.** 1½ hours, one section each term.  
Six hours a week for 5½ weeks, in sections; 33 hours. Drs. Swan, Christensen, Fischer, John Harris, Keizer, Kreft, Lyman, Markley, Schlegel, Talbot, and Robert Zeller.
- Eye 613. **Eye.** ½ hour fall.  
Lectures, demonstrations, and quizzes, 1 hour a week; 11 hours. Dr. Swan.

## ELECTIVE COURSES

- Eye 601. **Research.** Any term, hours to be arranged.  
Dr. Swan.
- Eye 660. **Outpatient Clinic.** Any term, hours to be arranged in accordance with the requirements of the regular Outpatient Clinic course.  
(Fourth year.) Elective credit for completion of clinical work in the department in addition to that required in the regular Outpatient Clinic course.

**Otology, Rhinology, and Laryngology**

## REQUIRED COURSES

## THIRD YEAR

- Ent 611. **Ear, Nose, and Throat.** ½ hour fall.  
Lectures, recitations, and quizzes, 1 hour a week; 11 hours. Drs. Chamberlain, DeWeese, and R. Hansen.

## FOURTH YEAR

- Ent 612. **Ear, Nose, and Throat Outpatient Clinic.** 1½ hours, one section each term.  
Practical instruction in examination and treatment of cases. Six hours a week for 5½ weeks, in sections; 33 hours. Drs. Adix, Beattie, Bolton, Chamberlain, DeWeese, Robert Hansen, Holden, Jordan, Kuhn, Mettler, Jack Miller, Myers, Titus, and Westfall.
- Ent 613. **Ear, Nose, and Throat.** ½ hour winter.  
Lectures, demonstrations, and quizzes, 1 hour a week; 11 hours. Drs. Chamberlain, DeWeese, and R. Hansen.

## ELECTIVE COURSE

- Ent 660. **Outpatient Clinic.** Any term, hours to be arranged in accordance with the requirements in the regular Outpatient Clinic course.  
(Fourth year.) Elective credit for completion of clinical work in the department in addition to that required in the regular Outpatient Clinic course.

**Obstetrics and Gynecology****Obstetrics**

## REQUIRED COURSES

## THIRD YEAR

- Obs 611. **Introductory Obstetrics.** 1 hour fall.  
Lectures, recitations, and demonstrations in obstetrics. The anatomy and physiology of the female pelvis and genitals; diagnosis of pregnancy; the

management of normal pregnancy; physiology of and clinical course in normal labor and puerperium. One hour twice a week; 22 hours. Drs. Fearl, Hartmann, Ronald Neilson, and Scherman.

- Obs 612. **Lecture and Demonstration Course in Obstetrics.** 1 hour winter.  
Mechanism of normal and abnormal presentation; manikin demonstration; care of the newborn child. Obstetrical technique; forceps, version, pubiotomy, cesarean section, and embryotomy. One hour twice a week; 22 hours. Drs. Benson, Fearl, Duncan Neilson, and Schaufler.
- Obs 613. **Pathology and Pregnancy, Labor, and the Puerperium.** 1 hour spring.  
Lectures and demonstrations. One hour twice a week; 22 hours.
- Obs 614. **Attendance at Deliveries.** ½ hour any term.  
Each student required to be in attendance at and observe twelve deliveries in Multnomah Hospital. Prerequisite: Obs 611. 11 hours. Dr. Benson.
- Obs 615. **Manikin.** ½ hour, one section each term.  
Lectures and demonstration. One hour a week, in sections; 11 hours. Dr. Keith Markee.

*Obstetrical Pathology* (see Pth 514).

#### FOURTH YEAR

- Obs 616. **Clinical Obstetrics.** 1 hour, one section each term.  
Outpatient Clinic. Examinations of pregnant women, pelvimetry, and instructions in prenatal and postpartum care. Two hours twice a week for 5½ weeks, in sections; 22 hours. Drs. Blatchford, Greene, Jackson, Lage, Keith Markee, Ray, and Young.
- Obs 617. **Outpatient Service.** 1½ hours any term.  
Delivery of patients in the hospital, and attendance upon mother and child after delivery. Each student required to participate in at least six deliveries during an assigned period. Prerequisite: Obs 614. 33 hours. Dr. Benson.
- Obs 618. **Postnatal Clinic.** ½ hour, one section each term.  
Outpatient Clinic. Two hours a week for 5½ weeks; 11 hours. Drs. Chavigny and Scherman.
- Obs 619, 620, 621. **General Clinic.** ½ hour each term.  
Lectures and demonstrations. One hour a week; 33 hours. Dr. McCall.
- Obs 622. **Clerkships.** ½ hour, one section each term.  
Multnomah Hospital. One hour a week; 33 hours. Dr. Keith Markee.

#### ELECTIVE COURSES

- Obs 601. **Research.** Any term, hours to be arranged.
- Obs 660. **Outpatient Clinic.** Any term, hours to be arranged in accordance with the requirements in the regular Outpatient Clinic.  
(Fourth year.) Elective credit for completion of clinical work in the department in addition to that required in the regular Outpatient Clinic course.

### Gynecology

#### REQUIRED COURSES

##### THIRD YEAR

- Gyn 611. **Gynecology.** 1 hour winter.  
Lectures, demonstrations, and recitations, 2 hours a week; 22 hours. Dr. Stearns.
- Gyn 612. **Gynecology.** 1 hour spring.  
Lectures and recitations, 2 hours a week; 22 hours. Drs. Benson and Fearl.

- Gyn 613. **Clinical Clerkships.** 1½ hours, one section each term.  
Multnomah Hospital. Three hours a week, in sections; 33 hours. Drs. Gunnar Nelson and Scherman.
- Gynecological Pathology* (see Pth 514).

#### FOURTH YEAR

- Gyn 614. **Practical Gynecology.** 1 hour, one section each term.  
Outpatient Clinic. Two hours a week for 11 weeks, in sections; 22 hours. Drs. Bischoff, Breese, Clancy, Emig, Franklin, Henderson, Kinzel, Marshall, David Moore, Ray, and Whitely.
- Gyn 615. **Operative Clinic.** ½ hour, one section each term.  
Multnomah Hospital. Two hours a week for 5½ weeks, in sections; 11 hours. Dr. Stearns.

#### ELECTIVE COURSES

- Gyn 601. **Research.** Any term, hours to be arranged.
- Gyn 618. **Gynecological Tumor Clinic.** ½ hour any term.  
(Fourth year.) Outpatient Clinic. Two hours a week for 5½ weeks, in sections; 11 hours. Limited to 8 students. Drs. Fearl, Fulsher, and James.
- Gyn 660. **Outpatient Clinic.** Any term, hours to be arranged in accordance with the requirements in the regular Outpatient Clinic course.  
(Fourth year.) Elective credit for completion of clinical work in the department in addition to that required in the regular Outpatient Clinic course.

### Pediatrics

#### REQUIRED COURSES

##### THIRD YEAR

- Ped 611, 612, 613. **Anatomy, Physiology, Hygiene of Infancy and Childhood.** ½ hour each term.  
Lectures, clinics, and bedside instruction on diseases of the newly born and diseases of nutrition. Practical work in infant feeding. One hour a week; 33 hours. Pediatric staff.
- Ped 614, 615, 616. **Diseases of Infancy and Childhood.** ½ hour each term.  
A comprehensive study of diseases of children. Recitations, lectures, and clinical demonstrations. One hour a week; 33 hours. Pediatric staff.
- Ped 617. **Clerkships.** 2 hours, one section each term.  
Doernbecher Hospital. Four hours a week, in sections; 44 hours. Pediatric staff.
- Ped 618. **Physical Diagnosis in Children.** ½ hour, one section each term.  
This course is given as a part of the pediatric clerkship. One hour a week, in sections; 11 hours. Pediatric staff.
- Psychopathology and Symptoms of Various Mental Reaction Types and Behavior Disorders of Children* (see Ps 613, 614).

#### FOURTH YEAR

- Ped 619. **Outpatient Clinic.** 2 hours, one section each term.  
Eight hours a week for 5½ weeks, in sections; 44 hours. Pediatric staff.
- Ped 622, 623, 624. **Diseases of Infancy and Childhood.** ½ hour each term.  
A comprehensive study of diseases of children. Recitations, lectures, and clinical demonstrations. One amphitheater clinic each week throughout the entire school year on cases selected from the wards of the Doernbecher Hospital. One hour a week; 33 hours. Pediatric staff.

## ELECTIVE COURSES

- Ped 601. **Research.** Any term, hours to be arranged.
- Ped 620. **Infant Feeding Clinic.** ½ hour, one section each term.  
Outpatient Clinic. Two hours a week for 5½ weeks; 11 hours. Limited to 10 students. Pediatric staff.
- Ped 660. **Outpatient Clinic.** Any term, hours to be arranged in accordance with the requirements in the regular Outpatient Clinic course.  
(Fourth year.) Elective credit for completion of clinical work in the department in addition to that required in the regular Outpatient Clinic course.
- Demonstration Course in Prepsychotic Cases* (see Ps 618).

## Special Programs

### Graduate Residency Program

ONE OF THE IMPORTANT FUNCTIONS of a medical school is the training of physicians in the medical specialties. The demand for such training has greatly increased in recent years. In response, the Medical School residency program has been expanded to provide approximately 70 appointments. Residency training follows one year of internship and consists of two to five years of study devoted entirely to one specialized field of medicine. Instruction is received both in clinical departments and in related basic science departments of the school.

All residencies have received the approval of the Council on Medical Education and Hospitals of the American Medical Association and of the respective American boards. Residencies are offered in anesthesia, dermatology and syphilology, experimental medicine, internal medicine, obstetrics and gynecology, neurological surgery, neurology, ophthalmology, orthopedic surgery, otolaryngology, pathology (both clinical and anatomical), pediatrics, radiology, general surgery, thoracic surgery, and urology.

The following Portland hospitals cooperate with the Medical School in the residency programs: City of Portland Isolation Hospital, Emanuel Hospital, Shriners' Hospital for Crippled Children, Good Samaritan Hospital, and Veterans Hospital.

Applications should be made to the Medical Director of the University of Oregon Medical School Hospitals and Clinics. Appointments are made six to eight months in advance of the beginning of the residency period, July 15.

### Postgraduate Program

THE UNIVERSITY OF OREGON MEDICAL SCHOOL makes its teaching and clinical facilities available to physicians for continued postgraduate study. An extensive postgraduate program has been arranged, consisting of a series of short intensive courses, usually of three to five days' duration. These courses are devoted to special subjects and are scheduled throughout the year. Instruction is by lectures and demonstrations, the method of presentation depending upon the subject. Courses are offered in the following fields: dermatology, general surgery, internal medicine and subspecialties, malignant diseases, obstetrics and gynecology, ophthalmology, otolaryngology, orthopedic surgery, pediatrics, radiology, and urology.

Enrollment is open to any graduate of an approved medical school who is licensed to practice in his state of residence. The fee for each course is \$10.00 per day.

Any physician meeting the eligibility requirements stated above may attend any of the regularly scheduled clinical teaching activities in the hospitals and clinics without official enrollment and without payment of fees.

### Graduate Studies

THE MEDICAL SCHOOL offers graduate instruction leading to the Master of Science and Doctor of Philosophy degrees; these degrees are conferred by the University of Oregon upon recommendation of the faculty of the Medical School. The graduate program is designed for students who plan careers in teaching and research in the basic medical sciences and to provide specialized training in

the scientific approach to medical problems for students preparing for teaching and research in clinical medicine.

Graduate work, leading to the M.S. or the Ph.D. degree, is offered in the fields of anatomy, bacteriology, biochemistry, pathology, pharmacology, and physiology.

For admission to work toward the master's degree, the student must hold a bachelor's degree from an accredited college or university. A reading knowledge of a modern foreign language is highly desirable; all candidates must have training in elementary statistics. Special undergraduate preparation is recommended by each of the departments offering graduate work; information concerning such preparation may be obtained from the Registrar of the Medical School.

For the M.S. degree, the student must complete 30 term hours of work in his major subject and 15 term hours in a minor subject. A minimum of three academic terms in residence as a graduate student is required. No graduate credit is granted in a course in which the student receives a grade lower than IV, and a minimum yearly average of III is required for continued registration. Each student must submit a thesis, consisting of a report on experimental work, and pass an oral examination on the thesis at least ten days prior to commencement. A written qualifying examination, covering the broad field of his graduate work, may be required of a candidate for the master's degree, at the discretion of the major department and the Graduate Council.

A total of 135 term hours of graduate work is required for the Ph.D. degree, of which a minimum of 20 term hours must be in a single minor or a minimum of 30 term hours in two minors. Not more than 35 term hours of work in a minor will be accepted. The minimum residence requirement is six academic terms. The candidate must maintain a yearly grade average of III or higher.

A written qualifying examination, covering the broad field of the student's graduate work is required before admission to candidacy for the Ph.D. degree. The student is not eligible to take the qualifying examination until he has demonstrated, by examination, a reading ability in German and in French or another modern foreign language.

The thesis for the Ph.D. degree must show evidence of originality in the planning and execution of independent experimental work, and must represent an original contribution to knowledge. The candidate must pass an oral examination on his thesis.

The Medical School also offers a special program of study for students who wish to earn the M.S. degree while enrolled in the regular medical course. This program requires one academic year of residence beyond the residence required for the M.D. degree. Students following this program are granted minor credit for the basic science courses in the medical curriculum.

Candidates for the Ph.D. degree who already hold the M.D. degree may apply a maximum of 45 term hours of credit in the basic medical sciences toward the graduate degree. Simultaneous work toward the M.D. and the Ph.D. degrees is not permitted.

Further information concerning graduate studies at the Medical School may be obtained from the Registrar. Tuition and fees for graduate students are listed on pages 14-15.

## Nursing Education

THE DEPARTMENT OF NURSING EDUCATION at the University of Oregon Medical School is organized on a collegiate basis; the department offers (1) an undergraduate curriculum designed to prepare young women for service as professional nurses in the care of the sick and in the promotion of community health; and (2) advanced programs of study for graduate nurses.

The student in the undergraduate four-year degree curriculum takes the first five terms of her work at the University of Oregon, at Oregon State College, or at another accredited college or university. The prenursing curriculum is completed with one term of work on the campus of the Medical School, and is followed by a ten-term professional curriculum coordinated with clinical instruction in the hospitals and clinics of the Medical School. The teaching units in which clinical experience is received are the Multnomah Hospital, the University State Tuberculosis Hospital, the Outpatient Clinic, the Oregon State Hospital, and the University of Oregon Medical School Hospital.

The programs for graduate nurses are planned to provide: (1) opportunities for building a strong educational foundation through work in written and spoken English, history, socio-economic problems, literature and the fine arts, and biological and physical science; (2) a thorough preparation in one or more of the following broad nursing fields: (a) general nursing, (b) public health nursing, and (c) teaching and supervision. The programs are open both to nurses who desire to complete work towards a Bachelor of Science degree with a major in nursing and to nurses who wish preparation in a particular area of professional nursing.

A separate catalog containing detailed information on organization, faculty, facilities, requirements, and curricula of the Department of Nursing Education may be obtained on request.

## Hospital Dietetics

THE COURSE IN HOSPITAL DIETETICS offered in the University of Oregon Medical School Hospitals and Clinics was approved by the American Dietetic Association in 1943. The course provides the one year's internship in a hospital necessary to complete requirements for membership in the association.

The minimum admission requirement is graduation with a B.S. degree from an accredited college with a major in foods or in institutional management.

During the twelve-month training period at the Medical School, the student pays no tuition but provides her own supplies, including uniforms. Students receive complete maintenance and an allowance of \$15.00 per month.

Appointments are made once a year; applications should be submitted to the Medical Director, University of Oregon Medical School Hospitals and Clinics, not later than February 15.

## X-Ray Technique

THE DEPARTMENT OF RADIOLOGY of the University of Oregon Medical School offers a two-year course of training for X-ray technicians. The course, which was established in 1930, is approved by the Council on Medical Education and Hospitals of the American Medical Association and by the American Registry of X-Ray Technicians.

The minimum admission requirement is graduation from an accredited high school with a high scholastic rating; however, preference is given applicants who have college training with credits in mathematics and physics.

No tuition is charged during the period of training, but the student must provide his own books, supplies, and uniforms. During the second year, the student serves as an apprentice technician and receives a stipend of \$50.00 per month.

The course includes lectures in anatomy, physiology, physics, and X-ray equipment, and lectures and clinical experience in dark-room chemistry and procedures, X-ray techniques, positioning of patients, hospital ethics, record keeping, department operation, and X-ray therapy. Students receive clinical experience in special X-ray procedures during their second year of training. All instruction

is under the direction of the head of the Department of Radiology of the University of Oregon Medical School.

Ten students are admitted annually in July. Applications should be submitted to the Chief Technician, Department of Radiology, University of Oregon Medical School Hospitals and Clinics.

Upon successful completion of the course, a certificate is given by the University of Oregon Medical School, and the student is eligible for registration with the American Registry of X-Ray Technicians.

## Medical Technology

RAYMOND D. GRONDAHL, M.D., Professor; Head of Department of Clinical Pathology; Director of Medical Technology Program.

JAMES H. LIUM, M.D., Associate Clinical Professor.

MARLOWE DITTEBRANDT, M.D., Assistant Clinical Professor.

HOMER H. HARRIS, M.D., Assistant Clinical Professor.

TYRA T. HUTCHENS, M.D., Assistant Professor.

EUGENE W. LANDRETH, M.D., Assistant Professor.

MARY ELIZABETH BAPTIST, B.A., M.T., Instructor.

DAVID S. TAKALO, M.S., Clinical Instructor in Medical Technology.

TRAINING IN MEDICAL TECHNOLOGY is offered in the clinical laboratories of the University of Oregon Medical School. The twelve-month program, established in 1933, is approved by the Registry of Medical Technologists of the American Society of Clinical Pathologists and by the Council on Medical Education and Hospitals of the American Medical Association.

The minimum admission requirements are: two years of college work, including 18 term hours in biology; 9 term hours in inorganic chemistry; 4 term hours in either quantitative analysis, organic chemistry, or biochemistry. The applicant's credentials must be approved by the Registry prior to admission. At the present time, approximately 20 students are enrolled annually. Preference is given students who have three years of college work.

Academic credit is granted for the work of the fall, winter, and spring terms. No credit is given for the summer term, which is required for certification by the Registry. Upon satisfactory completion of the twelve continuous months' training period, a certificate is issued to the student by the University of Oregon Medical School. The student is then eligible to take the National Registry Examination, which is given twice a year. Upon passing the examination, the student is qualified as a registered medical technologist with the American Society of Clinical Pathologists.

Application blanks for admission may be obtained from the Registrar of the University of Oregon Medical School.

**Fees.** Students in the medical technology program pay the following fees:

	Per term	Per year
Tuition.....	\$ 20.00	\$ 60.00
Laboratory and course fee.....	32.00	96.00
Building fee.....	5.00	15.00
Incidental fee (student health service).....	10.00	30.00
Total for Oregon residents.....	\$ 67.00	\$201.00
Total for nonresidents, who pay an additional \$45.00 per term.....	\$112.00	\$336.00

Medical technology students pay the "special fees" listed on page 16 under the conditions indicated.

Textbooks and uniforms are supplied by the student. No dormitories are available on the Medical School campus.

## Curriculum in Medical Technology

### Fall Term

	Term hours
MT 410. Clinical Bacteriology.....	4
MT 413. Laboratory Orientation.....	2
MT 424. Clinical Biochemistry.....	5
MT 430. Principles of Hematology.....	5
	<hr/>
	16

### Winter Term

MT 411. Clinical Bacteriology.....	6
MT 425. Clinical Biochemistry.....	6
MT 431. Special Hematology.....	3
	<hr/>
	15

### Spring Term

MT 414. Urinalysis.....	4
MT 420. Histological Technique.....	4
MT 436. Applied Serology.....	5
MT 437. Clinical Parasitology.....	3
	<hr/>
	16

## Description of Courses

**MT 410, 411. Clinical Bacteriology.** 4 hours fall, 6 hours winter.

The bacteria pathogenic for man. Study of the culture, the morphological characteristics, and the means of isolation and identification of these organisms. Fall: lectures, 4 hours a week. Winter: lectures, 3 hours a week; laboratory, 9 hours a week. 176 hours. Dr. Homer Harris.

**MT 413. Laboratory Orientation.** 2 hours fall.

A study of the collection, preservation, and care of the various types of clinical specimens. Lectures, 1 hour a week; laboratory, 3 hours a week; 44 hours. Dr. Grondahl and staff.

**MT 414. Urinalysis.** 4 hours spring.

A study of the mechanisms of formation and identification of the normal and abnormal components of urine. Lectures, 2 hours a week; laboratory, 6 hours a week; 88 hours. Miss Baptist.

**MT 420. Histological Technique.** 4 hours spring.

Principles of tissue fixation, dehydration, and staining, with special emphasis upon the methods used in histopathologic technique. Lectures, 2 hours a week; laboratory, 6 hours a week; 88 hours. Dr. Grondahl and staff.

**MT 424, 425. Clinical Biochemistry.** 5 hours fall, 6 hours winter.

The principles of biochemistry and the applications of colorimetry, gasometric analysis, and quantitative chemistry in the determination of the substances in blood and body fluids. Fall: lectures, 3 hours a week; laboratory, 6 hours a week. Winter: lectures, 3 hours a week; laboratory, 9 hours a week. 231 hours. Dr. Dittebrandt.

**MT 430. Principles of Hematology.** 5 hours fall.

The normal function and development of blood cells, red blood counts, white blood counts, differential cell counts, platelet counts, sedimentation rate, coagulation, bleeding time, and red blood cell fragility. Lectures, 3 hours a week; laboratory, 6 hours a week; 99 hours. Dr. Tyra Hutchens.

**MT 431. Special Hematology.** 3 hours winter.

Blood dyscrasias, bone marrow, and blood studies relative to the anemias, leukemia, and other pathological conditions of blood. Lectures, 2 hours a week; laboratory, 3 hours a week; 55 hours. Dr. Tyra Hutchens.



**MT 436. Applied Serology.** 5 hours spring.

The principles of serological phenomena in the laboratory. The factors influencing precipitin, flocculation, and complement fixation tests as applied to serum diagnosis of disease. Special consideration of flocculation and complement fixation tests as they apply to the diagnosis of syphilis. Lectures, 2 hours a week; laboratory, 9 hours a week; 121 hours. Dr. Grondahl.

**MT 437. Clinical Parasitology.** 3 hours spring.

The life cycles, modes of transmission, and diagnostic features of the more common parasites of man. Lectures, 2 hours a week; laboratory, 3 hours a week; 55 hours. Miss Baptist.

# Faculty

## Officers of Administration

JOHN R. RICHARDS, Ph.D., Chancellor, Oregon State System of Higher Education; Professor.

O. MEREDITH WILSON, Ph.D., President, University of Oregon; Professor.

DAVID W. E. BAIRD, M.D., LL.D., Dean of the Medical School; Professor of Medicine.

CHARLES N. HOLMAN, M.D.; Associate Dean of the Medical School; Professor of Medicine.

WILLIAM A. ZIMMERMAN, B.S., Assistant to the Dean; Associate Professor.

JOSEPH J. ADAMS, B.B.A., Director of Public Affairs; Assistant Professor.

### Hospitals and Clinics Administration

DAVID W. E. BAIRD, M.D., Dean; Professor of Medicine.

CHARLES N. HOLMAN, M.D., Medical Director and Administrator; Professor of Medicine.

JARVIS GOULD, M.D., Assistant Medical Director and Assistant Administrator; Associate Professor of Medicine.

WILLIAM A. ZIMMERMAN, B.S., Assistant Administrator; Associate Professor.

GWYNN C. BRICE, Administrative Assistant; Assistant Director of Outpatient Clinic; Assistant Professor.

### Business Office

WILLIAM A. ZIMMERMAN, B.S., Business Manager; Associate Professor.

AMBY FREDERICK, B.S., Assistant Business Manager; Assistant Professor.

RODNEY T. JEFFREY, B.A., Personnel Officer.

### Registrar's Office

CAROLINE H. POMMARANE, B.S., Registrar; Assistant Professor.

### Library

BERTHA BRANDON HALLAM, B.A., Librarian; Professor.

ORA KIRSHNER GOODMAN, B.S., Catalog Librarian; Assistant Professor.

MARGARET ELIZABETH HUGHES, B.S., Circulation Librarian; Assistant Professor.

LOLITA B. McELVENY, Assistant Circulation Librarian; Instructor.

MARIE K. WAGNER, B.S., Assistant Circulation Librarian; Instructor.

### Buildings and Grounds

A. J. CLEMONS, Superintendent of Physical Plant; Assistant Professor.

CHARLES H. ANDERSON, Assistant Superintendent of Physical Plant.

### Postgraduate Education

CHARLES N. HOLMAN, M.D., Director; Professor of Medicine.

GWYNN C. BRICE, Administrative Assistant; Assistant Professor.

### Alumni Office

JOSEPH J. ADAMS, B.B.A., Executive Secretary; Assistant Professor.

### Student Health Service

JOSEPH B. TRAINER, M.D., Health Service Physician; Associate Professor of Physiology and Medicine.

**Medical Illustration**

CLARICE ASHWORTH FRANCONI, Medical Illustrator.

**Photography**

CHARLES F. NORRIS, Photographer.  
 JAMES T. PHILLIPS, Photographer.  
 CAROL E. KERR, Photographer.

**Printing and Office Supplies**

ALBERT L. BIGEJ, Printer.

**Executive Faculty**

JOHN R. RICHARDS, Chancellor, State System of Higher Education; O MEREDITH WILSON, President of the University of Oregon; DAVID W. E. BAIRD, Dean of the Medical School; RALPH C. BENSON, GUY L. BOYDEN, JOHN M. BROOKHART, NORMAN A. DAVID, CHARLES T. DOTTER, ARTHUR W. FRISCH, JARVIS GOULD, RAYMOND D. GRONDAHL, ALLAN J. HILL, CHARLES N. HOLMAN, WARREN C. HUNTER, HOWARD P. LEWIS, WILLIAM K. LIVINGSTON, EDWIN E. OSGOOD, ANTHONY A. PEARSON, RICHARD L. SLEETER, KENNETH C. SWAN, ADOLPH WEINZIRL, EDWARD S. WEST, WILLIAM A. ZIMMERMAN (secretary, ex officio).

**Standing Committees**

*Admission and Advanced Standing*—EDWARD S. WEST (chairman), RAYMOND D. GRONDAHL, HANCE F. HANEY, E. COLTON MEEK, JR., JOSEPH B. TRAINER, CAROLINE H. POMMERANE (ex officio).

*Curriculum and Schedule*—HOWARD P. LEWIS (chairman), CHARLES T. DOTTER, ARTHUR W. FRISCH, ALLAN J. HILL, WILLIAM K. LIVINGSTON, HOMER P. RUSH, WILBERT R. TODD, ADOLPH WEINZIRL, WILLIAM A. ZIMMERMAN (ex officio).

*Graduate Council*—JOHN M. BROOKHART (chairman), ANTHONY A. PEARSON, KENNETH C. SWAN, ADOLPH WEINZIRL, EDWARD S. WEST.

*Henry Waldo Coe Prize*—HANCE F. HANEY (chairman), WILLIAM K. LIVINGSTON.

*Internships*—WARREN C. HUNTER (chairman), HANCE F. HANEY, CHARLES N. HOLMAN, WILLIAM A. ZIMMERMAN.

*Jones Lectureship*—HOWARD P. LEWIS (chairman), HANCE F. HANEY.

*Library*—WILLIAM K. LIVINGSTON (chairman), NOBLE WILEY JONES, FRANK R. MENNE, GOODRICH C. SCHAUFFLER, KENNETH C. SWAN, WILBERT R. TODD, BERTHA B. HALLAM (ex officio).

*Research*—JOHN M. BROOKHART (chairman), ROBERT L. BACON, JOHN E. HARRIS, FREDERICK P. HAUGEN, CARL E. HOPKINS, DANIEL H. LABBY, DONALD E. PICKERING, EDWARD S. WEST, JOSEPH J. ADAMS (ex officio).

*Student-Faculty*—Faculty Members: FREDERICK P. HAUGEN (chairman), HOWARD P. LEWIS, WILLIAM K. LIVINGSTON, ANTHONY A. PEARSON, EDWARD S. WEST. Student Members: BENJAMIN B. SHEPHERD, JERRY D. GIESY, MILES L. WEBER.

*Student Health*—NORMAN A. DAVID (chairman), HANCE F. HANEY, CHARLES N. HOLMAN, JOSEPH B. TRAINER, ADOLPH WEINZIRL, WILLIAM A. ZIMMERMAN.

*Scholarships*—EDWARD S. WEST (chairman), ALLAN J. HILL, ELTON L. MCCAWLEY, WILLIAM A. ZIMMERMAN.

*Dean's Advisory Committee for the Veterans Hospital*—MATTHEW C. RIDDLE (chairman), JOHN H. FITZGIBBON, CHARLES N. HOLMAN, HOWARD P. LEWIS, WILLIAM K. LIVINGSTON, HAROLD J. NOYES, KENNETH C. SWAN, EDWARD S. WEST.

**Emeritus Faculty**

RALPH A. FENTON, M.D., Professor Emeritus of Otolaryngology.  
 NOBLE WILEY JONES, M.D., Professor Emeritus of Medicine.  
 CHARLES R. McCLURE, M.D., Professor Emeritus of Orthopedic Surgery.  
 HARRY J. SEARS, Ph.D., Professor Emeritus of Bacteriology.  
 LAURENCE SELLING, M.D., Professor Emeritus of Medicine.

**Basic Science Departments****Anatomy**

ANTHONY A. PEARSON, Ph.D., Professor; Head of Department.  
 ROBERT L. BACON, Ph.D., Associate Professor.  
 DAVID L. GUNBERG, Ph.D., Assistant Professor.  
 WILLIAM A. STOTLER, Ph.D., Assistant Professor.  
 ARCHIE R. TUNTURI, Ph.D., M.D., Assistant Professor.  
 DONALD L. CLELAND, B.A., Student Assistant.  
 KEITH D. HOLMES, B.A., Student Assistant.  
 RICHARD B. LYONS, B.S., Student Assistant.  
 MARK A. MELGARD, B.A., Student Assistant.

**Bacteriology**

ARTHUR W. FRISCH, Ph.D., M.D., Professor; Head of Department.  
 EVELYN L. OGINSKY, Ph.D., Associate Professor.  
 LYLE VEAZIE, Ph.D., Associate Professor.  
 INEZ BROWNLEE, M.S., Instructor.  
 GORDON H. DAVIES, A.I.S.T., Research Assistant.

**Biochemistry**

EDWARD S. WEST, Ph.D., Professor; Head of Department.  
 WILBERT R. TODD, Ph.D., Professor.  
 JOHN T. VAN BRUGGEN, Ph.D., Associate Professor.  
 HOWARD S. MASON, Ph.D., Associate Professor.  
 CLARISSA BEATTY, Ph.D., Assistant Professor.  
 ROBERT F. LABBÈ, Ph.D., Assistant Professor.  
 ANNE M. PERLEY, M.A., Assistant Professor.  
 RUTH D. PETERSON, Ph.D., Assistant Professor.  
 ELLEN L. TALMAN, Ph.D., Assistant Professor.  
 ROSE MARY BOCEK, M.S., Instructor.  
 PETER CAMERON BRUNET, Ph.D., Research Associate.  
 JACK H. FELLMAN, Ph.D., Research Associate.  
 JOHN E. HARRIS, M.D., Research Associate.  
 ILARION ONOPRYENKO, Ph.D., Research Associate.  
 EDWARD PETERSON, B.A., Research Associate.  
 DONALD E. PICKERING, M.D., Research Associate.  
 DEMETRIOS A. RIGAS, Ph.D., Research Associate.  
 JON V. STRAUMFJORD, M.D., Research Associate.  
 K. NOLAN TANNER, Ph.D., Research Associate.  
 KERRY T. YASUNOBU, Ph.D., Research Associate.

MARILUISE ALLEN, B.S., Research Assistant.  
 BETTY BAXTER, B.S., Research Assistant.  
 CLARA C. DEGRAFF, B.S., Research Assistant.  
 PINKIE S. GEE, B.S., M.T., Research Assistant.  
 RICHARD NEVÈ, M.S., Research Assistant.  
 JEAN SCOTT, Research Assistant.  
 JAMES ALBEN, B.A., Student Assistant.  
 DANIEL L. DENNIS, B.S., Student Assistant.  
 J. CLINTON ELWOOD, B.S., Student Assistant.  
 ROCCA GAROFALA, M.S., Student Assistant.  
 KENNETH M. GILES, B.S., Student Assistant.  
 MARVIN HINES, M.S., Student Assistant.  
 LEONARD N. JOHNSON, B.S., Student Assistant.  
 NICHOLAS KONTAXIS, A.B., Student Assistant.  
 ALICIA MARCO, B.S., Student Assistant.  
 WILLIAM J. REEVES, JR., B.S., Student Assistant.  
 WILLIAM H. SACK, B.S., Student Assistant.  
 DAVID A. SEARS, B.S., Student Assistant.  
 ROBERT W. STRAUMFJORD, B.A., Student Assistant.  
 ROSE WONG, M.S., Student Assistant.

### Pathology

WARREN C. HUNTER, M.A., M.D., Professor; Head of Department.  
 FRANK R. MENNE, M.D., Clinical Professor.  
 FRANK B. QUEEN, M.D., Professor.  
 VINTON D. SNEEDEN, M.D., Clinical Professor.  
 SHELDON A. JACOBSON, M.D., Associate Clinical Professor.  
 E. COLTON MEEK, JR., M.D., Associate Professor.  
 JEFF MINCKLER, M.D., Assistant Clinical Professor.  
 NELSON R. NILES, M.D., Assistant Professor.  
 ABE OYAMADA, M.D., Assistant Professor.  
 ERNEST J. LOSLI, M.D., Clinical Instructor.  
 JOSEPH E. NOHLGREN, M.D., Clinical Instructor.  
 CORRADO BAGLIO, M.D., Resident.  
 TOSHIO FUJIKURA, M.D., Resident.  
 YONG H. YANG, M.D., Resident.  
 DONALD V. ADAMS, B.S., Student Assistant.  
 WILLIAM J. BRADY, B.S., Student Assistant.  
 RICHARD D. BRUST, B.S., Student Assistant.  
 WINSTON I. COZINE, B.A., Student Assistant.  
 RICHARD D. SCHULTZ, B.A., Student Assistant.

### Clinical Pathology

RAYMOND D. GRONDAHL, M.D., Professor; Head of Department.  
 JAMES H. LIUM, M.D., Associate Clinical Professor.  
 MARLOWE DITTEBRANDT, M.D., Assistant Clinical Professor.  
 HOMER H. HARRIS, M.D., Assistant Clinical Professor.  
 TYRA T. HUTCHENS, M.D., Assistant Professor.  
 EUGENE W. LANDRETH, M.D., Assistant Professor.  
 MARY E. BAPTIST, B.A., M.T., Instructor in Medical Technology.  
 DAVID S. TAKALO, M.S., Clinical Instructor in Medical Technology.

### Pharmacology

NORMAN A. DAVID, M.D., Professor; Head of Department.  
 ELTON L. McCAWLEY, Ph.D., Associate Professor.  
 H. LENOX H. DICK, M.D., Research Associate.  
 NILKANTH M. PHATAK, Ph.G., Ph.D., Research Associate.  
 ROYAL C. AUBREY, B.A., Student Assistant.  
 CHARLES B. CARTER, B.A., Student Assistant.  
 WILLIAM L. DEBOLT, B.S., Student Assistant.  
 ROBERT P. GRIFFIN, B.S., Student Assistant.  
 WESLEY R. JACOBS, B.S., Student Assistant.  
 BENJAMIN B. SHEPHERD, Student Assistant.  
 ANDREW N. URBANO, B.S., Student Assistant.

### Physiology

JOHN M. BROOKHART, Ph.D., Professor; Head of Department.  
 WILLIAM D. BLAKE, M.D., Associate Professor.  
 JOSEPH B. TRAINER, M.D., Associate Professor.  
 BENJAMIN B. ROSS, Ph.D., Assistant Professor.  
 ALFRED J. RAMPONE, Ph.D., Instructor.  
 MONTE A. GREER, M.D., Clinical Research Associate.  
 WILLIAM L. HARTMANN, M.D., Clinical Research Associate.  
 DONALD M. PITCAIRN, M.D., Clinical Research Associate.  
 MOSES E. STEINBERG, M.S., M.D., Clinical Research Associate.  
 XENIA MACHNE, M.D., Research Associate.  
 ETTORE FADIGA, M.D., Research Fellow.  
 LYNN S. HUSBAND, B.S., Student Assistant.  
 ROBERT E. MAMMEN, B.A., Student Assistant.  
 LEW B. MYERS, B.S., Student Assistant.  
 T. JAMES ROBNETT, B.S., Student Assistant.  
 JOHN D. SIGURDSON, B.S., Student Assistant.  
 EDWARD T. TOYOOKA, B.S., Student Assistant.

## Clinical Departments

### Medicine

#### Internal Medicine

HOWARD P. LEWIS, M.D., Professor; Head of Department.  
 DAVID W. E. BAIRD, M.D., Professor; Dean of the Medical School.  
 JOHN H. FITZGIBBON, M.D., Clinical Professor; Head of Division of Gastroenterology.  
 HANCE F. HANEY, Ph.D., M.D., Professor; Chief, Department of Medicine Out-patient Professional Services.  
 BLAIR HOLCOMB, M.D., Clinical Professor; Senior Consultant in Diabetes and Metabolism.  
 CHARLES N. HOLMAN, M.D., Professor; Associate Dean of the Medical School; Medical Director and Administrator of Hospitals and Clinics.  
 MERL L. MARGASON, M.D., Clinical Professor; Senior Consultant in Neurology.  
 EDWIN E. OSGOOD, M.D., Professor; Head of Division of Experimental Medicine.  
 HOMER P. RUSH, M.D., Clinical Professor; Senior Consultant in Cardiology.  
 WILLIAM H. SHELDON, M.D., Clinical Professor.

ROY L. SWANK, M.D., Professor; Head of Division of Neurology.  
 ISIDOR C. BRILL, M.D., Associate Clinical Professor.  
 ROBERT S. DOW, M.D., Associate Clinical Professor.  
 JARVIS GOULD, M.D., Associate Professor; Assistant Medical Director of Hospitals and Clinics.  
 MONTE A. GREER, M.D., Associate Professor; Head of Division of Endocrinology.  
 HERBERT E. GRISWOLD, JR., M.D., Associate Professor; Head of Division of Cardiology.  
 CARL G. HELLER, Ph.D., M.D., Associate Clinical Professor.  
 DANIEL H. LABBY, M.D., Associate Professor; Head of Division of Diabetes and Metabolism.  
 GEORGE B. LONG, M.D., Associate Clinical Professor.  
 MERLE W. MOORE, M.D., Associate Clinical Professor; Head of Division of Allergy.  
 MATTHEW C. RIDDLE, M.D., Associate Clinical Professor.  
 DEMETRIOS A. RIGAS, Ph.D., Associate Professor of Experimental Medicine.  
 ARTHUR J. SEAMAN, M.D., Associate Professor; Associate Director of Division of Experimental Medicine.  
 JOSEPH B. TRAINER, M.D., Associate Professor.  
 ZOLTON T. WIRTSCHAFTER, M.D., Associate Clinical Professor.  
 WILLIAM S. CONKLIN, M.D., Assistant Clinical Professor.  
 EARL DANFORD DuBOIS, M.D., Assistant Clinical Professor.  
 MORTON GOODMAN, M.D., Assistant Clinical Professor.  
 WILLARD F. HOLLENBECK, M.D., Assistant Clinical Professor.  
 ROBERT D. KOLER, M.D., Assistant Professor.  
 JOHN J. KRYGIER, M.D., Assistant Clinical Professor.  
 FRANK PERLMAN, M.D., Assistant Clinical Professor.  
 DONALD M. PITCAIRN, M.D., Assistant Professor.  
 LEONARD W. RITZMANN, M.D., Assistant Clinical Professor.  
 PHILIP SELLING, M.D., Assistant Clinical Professor.  
 JAMES T. SPEROS, M.D., Assistant Clinical Professor.  
 JOHN E. TUHY, M.D., Assistant Clinical Professor; Head of Division of Chest Diseases.  
 FRANK UNDERWOOD, M.D., Assistant Clinical Professor.  
 CHARLES P. WILSON, M.D., Assistant Clinical Professor.  
 HOWARD E. ALLEN, M.D., Clinical Associate.  
 JAMES H. AUSTIN, M.D., Associate.  
 RUSSEL L. BAKER, M.D., Clinical Associate.  
 EDMUND H. BERGER, M.D., Clinical Associate.  
 ARTHUR M. BERGMAN, M.D., Clinical Associate.  
 GEORGE A. BOYLSTON, M.D., Clinical Associate.  
 EDGAR MURRAY BURNS, M.D., Clinical Associate.  
 CHARLES W. COFFEN, M.D., Clinical Associate.  
 WILLIAM COHEN, M.D., Clinical Associate.  
 RUDOLPH M. CROMMELIN, M.D., Clinical Associate.  
 AUBREY M. DAVIS, M.D., Clinical Associate.  
 RUDOLPH C. H. ENGEL, M.D., Clinical Associate.  
 J. EDWARD FIELD, M.D., Clinical Associate.  
 DONALD E. FORSTER, M.D., Clinical Associate.  
 MARTIN F. GILMORE, M.D., Clinical Associate.  
 HULDRICK KAMMER, M.D., Clinical Associate.  
 CHARLES E. LITTLEHALES, M.D., Clinical Associate.

LENIER ARTHUR LODMELL, M.D., Clinical Associate.  
 ROY R. MATTERI, M.D., Clinical Associate.  
 GUY R. MCCUTCHAN, M.D., Clinical Associate.  
 RAYMOND A. MCMAHON, M.D., Clinical Associate.  
 JOSEPH MILLER, M.D., Clinical Associate.  
 ROBERT F. MILLER, M.D., Clinical Associate.  
 JOHN R. MONTAGUE, M.D., Clinical Associate.  
 JOSEPH F. PAQUET, M.D., Clinical Associate.  
 HEYES PETERSON, M.D., Clinical Associate.  
 JOHN M. PIERSON, M.D., Clinical Associate.  
 ARTHUR L. ROGERS, M.D., Clinical Associate.  
 EDWARD E. ROSENBAUM, M.D., Clinical Associate.  
 MARVIN SCHWARTZ, M.D., Clinical Associate.  
 WILLIAM C. SCOTT, M.D., Clinical Associate.  
 JANICE R. STEVENS, M.D., Associate.  
 WILLIAM J. SWETT, M.D., Clinical Associate.  
 DAVID K. TAYLOR, M.D., Clinical Associate.  
 BEN VIDGOFF, M.D., Clinical Associate.  
 JOHN D. WELCH, M.D., Clinical Associate.  
 KURT W. AUMANN, M.D., Clinical Instructor.  
 DANIEL M. BACHMAN, M.D., Clinical Instructor.  
 SAMUEL T. BEALL, M.D., Clinical Instructor.  
 ARTHUR W. BERG, M.D., Clinical Instructor.  
 JOHN A. BLANCHARD, M.D., Clinical Instructor.  
 JAMES F. BLICKLE, M.D., Clinical Instructor.  
 PAUL R. BURGNER, M.D., Clinical Instructor.  
 C. CONRAD CARTER, M.D., Clinical Instructor.  
 JOHN D. CHASE, M.D., Clinical Instructor.  
 ESTILL N. DEITZ, M.D., Clinical Instructor.  
 SAMUEL DIACK, M.D., Clinical Instructor.  
 H. LENOX H. DICK, M.D., Clinical Instructor.  
 ROY A. DOWLING, M.D., Clinical Instructor.  
 HAROLD P. DYGART, JR., M.D., Clinical Instructor.  
 STELLA FISHER, M.D., Clinical Instructor.  
 JOHN R. FLANERY, M.D., Clinical Instructor.  
 PETER J. GALANTE, M.D., Clinical Instructor.  
 WILLIAM P. GALEN, M.D., Clinical Instructor.  
 JAMES B. HAMPTON, M.D., Clinical Instructor.  
 ROBERT L. HARE, M.D., Clinical Instructor.  
 WILLIAM D. HARRISON, M.D., Clinical Instructor.  
 HARMON T. HARVEY, M.D., Clinical Instructor.  
 THOMAS S. HEALY, M.D., Clinical Instructor.  
 MARCUS M. HORENSTEIN, M.D., Clinical Instructor.  
 JAY C. HOYT, M.D., Clinical Instructor.  
 WILLIAM W. HURST, M.D., Clinical Instructor.  
 ROBERT B. JOHNSON, M.D., Clinical Instructor.  
 RUTH ILONA KOKKO, M.D., Clinical Instructor.  
 LEWIS J. KRAKAUER, M.D., Clinical Instructor.  
 MARION L. KRIPPAEHE, M.D., Clinical Instructor.  
 WILBUR L. LARSON, M.D., Clinical Instructor.  
 AARNE J. LINDGREN, M.D., Clinical Instructor.

ERNEST T. LIVINGSTONE, M.D., Clinical Instructor.  
 LAURENCE K. MACDANIELS, M.D., Clinical Instructor.  
 ROBERT E. MASS, M.D., Clinical Instructor.  
 GORDON L. MAURICE, M.D., Clinical Instructor.  
 DONALD P. MCGREEVEY, M.D., Clinical Instructor.  
 NORBERT E. MEDVED, M.D., Clinical Instructor.  
 JOHN J. MURPHY, M.D., Clinical Instructor.  
 DONALD E. OLSON, M.D., Clinical Instructor.  
 OTTO C. PAGE, M.D., Clinical Instructor.  
 NORRIS H. PERKINS, M.D., Clinical Instructor.  
 BERNARD PIROFSKY, M.D., Clinical Instructor.  
 CHARLES E. REED, M.D., Clinical Instructor.  
 OREN R. RICHARDS, JR., M.D., Clinical Instructor.  
 JAMES A. RILEY, M.D., Clinical Instructor.  
 ROBERT E. RINEHART, M.D., Clinical Instructor.  
 GEORGE M. ROBINS, M.D., Clinical Instructor.  
 WAYNE R. ROGERS, M.D., Clinical Instructor.  
 LEONARD B. ROSE, M.D., Clinical Instructor.  
 ROBERT W. SCHNEIDER, M.D., Clinical Instructor.  
 LELAND L. SEUFERT, M.D., Clinical Instructor.  
 JOHN L. SOELLING, M.D., Clinical Instructor.  
 MARGARET H. SPEROS, B.A., Clinical Instructor in Experimental Medicine.  
 JOHN W. STEPHENS, M.D., Clinical Instructor.  
 DONALD E. TATUM, M.D., Clinical Instructor.  
 DUANE R. TAYLOR, M.D., Clinical Instructor.  
 RICHARD D. WILSON, M.D., Clinical Instructor.  
 JAMES V. WOODWORTH, M.D., Clinical Instructor.  
 JACK H. HUTCHINSON, B.A., Research Assistant.  
 ROBERT H. BIGLEY, M.D., Resident.  
 MILES J. EDWARDS, M.D., Resident.  
 ABOLGHASSEM GHAEMI, M.D., Resident in Experimental Medicine.  
 MYRON R. GROVER, JR., M.D., Resident.  
 GORDON D. HAYNIE, M.D., Resident.  
 OTOTAKA HIGASHI, M.D., Resident in Experimental Medicine.  
 MARION M. LARSEN, M.D., Resident.  
 HARRY W. MASENHIMER, M.D., Resident.  
 ROBERT D. MICHEL, M.D., Resident.  
 ARTURO V. SCHNEIDER, M.D., Resident.  
 JAMES W. WARREN, M.D., Resident.

## Allergy

MERLE W. MOORE, M.D., Associate Clinical Professor; Head of Division.  
 FRANK PERLMAN, M.D., Assistant Clinical Professor.  
 ROY R. MATTERI, M.D., Clinical Associate.  
 CHARLES E. REED, M.D., Clinical Instructor.  
 GEORGE M. ROBINS, M.D., Clinical Instructor.

## Cardiology

HERBERT E. GRISWOLD, JR., M.D., Associate Professor; Head of Division.  
 HOMER P. RUSH, M.D., Clinical Professor; Senior Consultant.  
 HANCE F. HANEY, Ph.D., M.D., Associate Professor.  
 FRANK UNDERWOOD, M.D., Assistant Clinical Professor.

EDMUND H. BERGER, M.D., Clinical Associate.  
 CHARLES W. COFFEN, M.D., Clinical Associate.  
 AUBREY M. DAVIS, M.D., Clinical Associate.  
 MARVIN SCHWARTZ, M.D., Clinical Associate.  
 PHILIP SELLING, M.D., Clinical Associate.  
 WILLIAM J. SWETT, M.D., Clinical Associate.  
 WILLIAM P. GALEN, M.D., Clinical Instructor.  
 LEONARD B. ROSE, M.D., Clinical Instructor.  
 W. STANLEY WELBORN, M.D., Clinical Instructor; Irwin Fellow in Cardiology.  
 RALPH B. REAUME, M.D., Raymond D. Brown Fellow in Cardiology.

## Chest Diseases

JOHN E. TUHY, M.D., Assistant Clinical Professor; Head of Division.  
 WILLIAM S. CONKLIN, M.D., Assistant Clinical Professor.  
 MORTON GOODMAN, M.D., Assistant Clinical Professor.  
 DONALD M. PITCAIRN, M.D., Assistant Professor.  
 JAMES T. SPEROS, M.D., Assistant Clinical Professor.  
 WILLIAM COHEN, M.D., Clinical Associate.  
 SAMUEL DIACK, M.D., Clinical Instructor.  
 PETER J. GALANTE, M.D., Clinical Instructor.  
 LAWRENCE M. LOWELL, M.D., Clinical Instructor.  
 GORDON L. MAURICE, M.D., Clinical Instructor.  
 DONALD E. OLSON, M.D., Clinical Instructor.

## Diabetes and Metabolism

DANIEL H. LABBY, M.D., Associate Professor; Head of Division.  
 BLAIR HOLCOMB, M.D., Clinical Professor; Senior Consultant.  
 RUDOLPH M. CROMMELIN, M.D., Clinical Associate.  
 HULDRICK KAMMER, M.D., Clinical Associate.  
 MARCUS M. HORENSTEIN, M.D., Clinical Instructor.  
 ERNEST T. LIVINGSTONE, M.D., Clinical Instructor.  
 ROBERT W. SCHNEIDER, M.D., Clinical Instructor.  
 JOHN W. STEPHENS, M.D., Clinical Instructor.

## Endocrinology

MONTE A. GREER, M.D., Associate Professor; Head of Division.  
 CARL G. HELLER, M.D., Ph.D., Associate Clinical Professor.  
 DANIEL H. LABBY, M.D., Associate Professor.  
 HULDRICK KAMMER, M.D., Clinical Associate.  
 ARTHUR L. ROGERS, M.D., Clinical Associate.  
 KURT W. AUMANN, M.D., Clinical Instructor.  
 HARMON T. HARVEY, M.D., Clinical Instructor.  
 ERNEST T. LIVINGSTONE, M.D., Clinical Instructor.  
 ROBERT W. SCHNEIDER, M.D., Clinical Instructor.

## Gastroenterology

JOHN H. FITZGIBBON, M.D., Clinical Professor; Head of Division.  
 GEORGE B. LONG, M.D., Associate Clinical Professor.  
 WILLARD F. HOLLENBECK, M.D., Assistant Clinical Professor.  
 JOHN J. KRYGIER, M.D., Assistant Clinical Professor.  
 GEORGE A. BOYLSTON, M.D., Clinical Associate.  
 J. EDWARD FIELD, M.D., Clinical Associate.  
 CHARLES E. LITTLEHALES, M.D., Clinical Associate.  
 LENIER ARTHUR LODMELL, M.D., Clinical Associate.

THOMAS S. HEALY, M.D., Clinical Instructor.  
 LEWIS J. KRAKAUER, M.D., Clinical Instructor.  
 NORBERT E. MEDVED, M.D., Clinical Instructor.  
 JAMES A. RILEY, M.D., Clinical Instructor.  
 JOHN L. SOELLING, M.D., Clinical Instructor.

#### Hematology

EDWIN E. OSGOOD, M.D., Professor; Head of Division.  
 HANCE F. HANEY, Ph.D., M.D., Professor.  
 ARTHUR J. SEAMAN, M.D., Associate Professor.  
 ROBERT D. KOLER, M.D., Assistant Professor.  
 BERNARD PIROFSKY, M.D., Clinical Instructor.  
 MARGRET H. SPEROS, B.A., Clinical Instructor in Experimental Medicine.

#### Neurology

ROY L. SWANK, M.D., Professor; Head of Division.  
 MERL L. MARGASON, M.D., Clinical Professor; Senior Consultant.  
 ROBERT S. DOW, M.D., Associate Clinical Professor.  
 JAMES H. AUSTIN, M.D., Associate.  
 RUDOLF C. H. ENGEL, M.D., Clinical Associate.  
 JACK H. FELLMAN, Ph.D., Associate.  
 JANICE R. STEVENS, M.D., Associate.  
 JOHN G. WATKINS, M.D., Clinical Associate in Medical Psychology.  
 C. CONRAD CARTER, M.D., Clinical Instructor.  
 ROY A. DOWLING, M.D., Clinical Instructor.  
 ROBERT B. JOHNSON, M.D., Clinical Instructor.  
 IRA A. MANVILLE, M.D., Clinical Instructor.

#### Dermatology

THOMAS B. FITZPATRICK, M.D., Ph.D., Professor; Head of Division.  
 LYLE B. KINGERY, M.D., Clinical Professor; Senior Consultant.  
 JOYLE DAHL, M.D., Associate Clinical Professor.  
 ALFERD ILLGE, M.D., Associate Clinical Professor.  
 THOMAS S. SAUNDERS, M.D., Associate Clinical Professor.  
 SHELDON A. WALKER, M.D., Associate Clinical Professor.  
 FARRINGTON DANIELS, JR., M.D., M.P.H., Assistant Professor.  
 LEON F. RAY, M.D., Assistant Clinical Professor.  
 BRUCE R. CHENOWETH, M.D., Clinical Instructor.  
 DAVID C. FRISCH, M.D., Clinical Instructor.  
 JOHN CLIFFTON MASSAR, M.D., Clinical Instructor.  
 RALPH R. SULLIVAN, M.D., Clinical Instructor.  
 WILLIAM L. FOWLKS, Ph.D., Research Associate.  
 JAMES DONALD IMBRIE, Research Assistant.  
 MADU PATHAK, M.S., Research Assistant.  
 MAKOTO SEIJI, M.D., Research Assistant.  
 YOSHIO YOSHIDA, M.D., Research Assistant.  
 DONALD W. ACKER, M.D., Resident.  
 DAVID H. BRUCE, M.D., Resident.  
 JOHN J. McANDREW, M.D., Resident.

#### Dental and Oral Medicine

HAROLD J. NOYES, D.D.S., M.D., Clinical Professor; Head of Division.  
 SAMUEL A. BRANDON, D.D.S., Clinical Associate.

WILLIAM R. DAVIS, D.M.D., Clinical Associate.  
 DONALD G. ELAND, D.M.D., Clinical Associate.  
 FRANK G. EVERETT, M.S., D.M.D., M.D., Clinical Associate.  
 HENRY C. FIXOTT, D.M.D., Clinical Associate.  
 HENRY C. FIXOTT, JR., D.M.D., Clinical Associate.  
 RICHARD B. KELLER, D.M.D., Clinical Associate.  
 FRANK O. MIHNOS, D.M.D., Clinical Associate.  
 DONALD R. PORTER, D.D.S., Clinical Associate.  
 NORMAN H. RICKLES, D.D.S., Clinical Associate.  
 CHARLES E. SMITH, D.M.D., Clinical Associate.  
 THEODORE SUHER, M.S., D.M.D., Clinical Associate.  
 RONALD K. TALL, D.M.D., Clinical Associate.  
 ROBERT A. BISSETT, D.M.D., Clinical Instructor.  
 GEORGE J. COLLINGS, D.M.D., Clinical Instructor.  
 J. D. FINLAY, D.M.D., Clinical Instructor.  
 TODD GILMORE, D.M.D., Clinical Instructor.  
 THOMAS D. HOLDER, D.M.D., Clinical Instructor.  
 FLOYD G. MATTSON, D.M.D., Clinical Instructor.  
 ROBERT D. MERCER, D.M.D., Clinical Instructor.  
 ROBERT E. NELSON, D.M.D., Clinical Instructor.  
 ROBERT C. RITTEL, D.M.D., Clinical Instructor.  
 BHIM S. SAVARA, B.D.S., Clinical Instructor.  
 WALTER W. SCHAFER, D.M.D., Clinical Instructor.  
 ROBERT R. SIDDOWAY, D.M.D., Clinical Instructor.  
 JAMES L. WOODSON, D.M.D., Clinical Instructor.

#### Psychiatry

GEORGE SASLOW, Ph.D., M.D., Professor; Head of Division.  
 HENRY H. DIXON, M.D., Clinical Professor.  
 JOSEPH D. MATARAZZO, Ph.D., Professor of Medical Psychology.  
 CHARLES BRADLEY, M.D., Associate Professor.  
 HERMAN A. DICKEL, M.D., Associate Clinical Professor.  
 JOHN W. EVANS, M.D., Assistant Clinical Professor.  
 GERHARD B. HAUGEN, M.D., Assistant Clinical Professor.  
 WENDELL H. HUTCHENS, M.D., Assistant Clinical Professor.  
 RUTH G. MATARAZZO, Ph.D., Assistant Professor of Medical Psychology.  
 JAMES G. SHANKLIN, M.D., Assistant Professor.  
 DEWITT CLINTON BURKES, M.D., Clinical Associate.  
 LENA KENIN, M.D., Clinical Associate.  
 IVOR M. CAMPBELL, M.D., Clinical Instructor.  
 KENNETH D. GAVER, M.D., Clinical Instructor.  
 RUTH JENS, M.D., Clinical Instructor.  
 JOSEPH R. LANGDON, M.D., Clinical Instructor.  
 JEANNE S. PHILLIPS, Ph.D., Instructor in Medical Psychology.  
 WILLIAM W. THOMPSON, M.D., Clinical Instructor.  
 MARILYN J. EKDAHL, A.M., Research Assistant.

#### Radiology

CHARLES T. DOTTER, M.D., Professor; Head of Department.  
 WILLIAM Y. BURTON, M.D., Clinical Professor.  
 SELMA HYMAN, M.D., Associate Clinical Professor.

LOUIS H. FRISCHE, M.D., Associate Professor.  
 WAYNE G. ERICKSEN, M.D., Assistant Clinical Professor.  
 JOHN WAYNE LOOMIS, M.D., Assistant Clinical Professor.  
 JAMES R. RAINES, M.D., Assistant Clinical Professor.  
 JAMES B. HAWORTH, M.D., Clinical Associate.  
 ARTHUR F. HUNTER, M.D., Clinical Associate.  
 MILTON D. HYMAN, M.D., Clinical Associate.  
 SHERMAN E. REES, M.D., Clinical Associate.  
 IVAN M. WOOLLEY, M.D., Clinical Associate.  
 CLIFFORD V. ALLEN, M.D., Clinical Instructor.  
 NORMAN L. BLINE, M.D., Clinical Instructor.  
 VINCENT C. HINCK, M.D., Instructor.  
 CHARLES T. JESSELL, M.D., Clinical Instructor.  
 J. ROBERT LEE, M.D., Clinical Instructor.  
 GREGORY B. NICHOLS, M.D., Clinical Instructor.  
 ARTHUR L. OVREGAARD, M.D., Clinical Instructor.  
 FRED C. SHIPPS, M.D., Clinical Instructor.  
 HILDA E. DRUM, R.T., Instructor in Radiological Technique.  
 DORIS C. SMITH, R.T., Instructor in Radiological Technique.  
 ETSUKO KAWASHIMA, M.D., Resident.  
 ALAN S. MARKEE, M.D., Resident.  
 ROBERT S. MILLER, M.D., Resident.  
 HARRY NEWMAN, M.D., Resident.  
 RONALD W. PHILIPS, M.D., Resident.  
 JACK R. RABENBERG, M.D., Resident.

### Public Health and Preventive Medicine

ADOLPH WEINZIRL, M.D., Professor ; Head of Department.  
 CARL E. HOPKINS, Ph.D., Associate Professor.  
 HAROLD M. ERICKSON, M.D., Assistant Clinical Professor.  
 F. SYDNEY HANSEN, M.D., Clinical Instructor.  
 THOMAS L. MEADOR, M.D., Clinical Instructor.  
 SAMUEL B. OSGOOD, M.D., Clinical Instructor.

### Surgery

#### General Surgery

WILLIAM K. LIVINGSTON, M.D., Kenneth A. J. Mackenzie Professor of Surgery ;  
 Head of Department.  
 GEORGE M. AUSTIN, M.D., Professor ; Head of Division of Neurosurgery.  
 ARTHUR C. JONES, M.D., Clinical Professor of Physical Medicine.  
 JOHN RAAF, M.D., Professor ; Senior Consultant in Neurosurgery.  
 EUGENE W. ROCKEY, M.D., Clinical Professor.  
 DEAN B. SEABROOK, M.D., Clinical Professor.  
 JOHN C. ADAMS, M.D., Associate Clinical Professor.  
 ALLEN M. BOYDEN, M.D., Associate Clinical Professor.  
 LESTER R. CHAUNCEY, M.D., Associate Clinical Professor.  
 WILLIAM S. CONKLIN, M.D., Associate Clinical Professor  
 LOUIS P. GAMBEE, M.D., Associate Clinical Professor.  
 CHARLES E. GURNEY, M.D., Associate Clinical Professor.  
 CLIFFORD E. HARDWICK, M.D., Associate Clinical Professor.  
 KARL H. MARTZLOFF, M.D., Associate Clinical Professor.

MATTHEW MCKIRDIE, M.D., Associate Clinical Professor.  
 OLIVER M. NISBET, M.D., Associate Clinical Professor.  
 CLARE G. PETERSON, M.D., Associate Professor.  
 MILLARD S. ROSENBLATT, M.D., Associate Clinical Professor.  
 EDWARD W. ST. PIERRE, M.D., Associate Clinical Professor.  
 ROBERT A. WISE, M.D., Associate Clinical Professor.  
 CLARENCE W. BRUNKOW, M.D., Assistant Clinical Professor.  
 RALPH M. DODSON, M.D., Assistant Clinical Professor.  
 MARTIN A. HOWARD, M.D., Assistant Clinical Professor.  
 RUSSELL L. JOHNSRUD, M.D., Assistant Clinical Professor.  
 WILLIAM W. KRIPPAEHN, M.D., Assistant Professor.  
 DONALD R. LAIRD, M.D., Assistant Clinical Professor.  
 LAWRENCE M. LOWELL, M.D., Assistant Clinical Professor.  
 JOSEPH W. NADAL, M.D., Assistant Clinical Professor.  
 JOHN P. TROMMALD, M.D., Assistant Clinical Professor.  
 WERNER E. ZELLER, M.D., Assistant Clinical Professor.  
 ADALBERT G. BETTMAN, M.D., Clinical Associate.  
 DARRELL C. BOLLAM, M.D., Clinical Associate.  
 WINFRED H. BUEERMAN, M.D., Clinical Associate.  
 JOHN G. P. CLELAND, M.D., Clinical Associate.  
 EDWARD W. DAVIS, M.D., Clinical Associate.  
 ARCH DIACK, M.D., Clinical Associate.  
 THOMAS J. FOX, M.D., Clinical Associate.  
 JOHN M. GUISS, M.D., Clinical Associate.  
 EDWARD K. KLOOS, M.D., Clinical Associate.  
 KENNETH E. LIVINGSTON, M.D., Clinical Associate.  
 ROBERT W. MARCUM, M.D., Clinical Associate.  
 JOHN KARL POPPE, M.D., Clinical Associate.  
 JOSEPH M. ROBERTS, M.D., Clinical Associate.  
 ROBERT B. SMALLEY, M.D., Clinical Associate.  
 DAN N. STEFFANOFF, M.D., Clinical Associate.  
 HARVEY W. BAKER, M.D., Clinical Instructor.  
 JOHN W. BASSETT, M.D., Clinical Instructor.  
 JACK E. BATTALIA, M.D., Clinical Instructor.  
 HARRY G. BECKWITH, M.D., Clinical Instructor.  
 FREDERIC H. BENTLEY, M.D., Clinical Instructor.  
 STANLEY F. BERGQUIST, M.D., Clinical Instructor.  
 BRUCE H. BEST, M.D., Clinical Instructor.  
 JAMES E. BUCKLEY, M.D., Clinical Instructor.  
 NATHAN J. CAMPBELL, M.D., Clinical Instructor.  
 SANTE D. CANIPAROLI, M.D., Clinical Instructor.  
 KEITH M. CLISBY, M.D., Clinical Instructor.  
 ROBERT M. COFFEY, M.D., Clinical Instructor.  
 HUGH DONALD COLVER, M.D., Clinical Instructor.  
 PETER DEWITT, M.D., Clinical Instructor.  
 ZANLEY C. EDELSON, M.D., Clinical Instructor.  
 LESTER H. EISENDORF, M.D., Clinical Instructor.  
 WILLIAM M. GARNJOBST, M.D., Clinical Instructor.  
 LEROY E. GROSHONG, M.D., Clinical Instructor.  
 BERNARD P. HARPOLE, M.D., Clinical Instructor.  
 JOHN F. HAYES, M.D., Clinical Instructor.

JOHN F. HIGGINSON, M.D., Clinical Instructor.  
 TOSHIO INAHARA, M.D., Clinical Instructor.  
 J. DUNN KAVANAUGH, M.D., Clinical Instructor.  
 BRUCE N. KVERNLAND, M.D., Clinical Instructor.  
 G. PRENTISS LEE, M.D., Clinical Instructor.  
 VERNER V. LINDGREN, M.D., Clinical Instructor.  
 R. KENT MARKEE, M.D., Clinical Instructor.  
 DAVID C. MASON, M.D., Clinical Instructor.  
 WILLARD L. MATHIESON, M.D., Clinical Instructor.  
 WALTER R. MUNROE, M.D., Clinical Instructor.  
 H. MINOR NICHOLS, M.D., Clinical Instructor.  
 FRANK B. PACKARD, M.D., Clinical Instructor.  
 ROBERT W. PATTON, M.D., Clinical Instructor.  
 HAROLD D. PAXTON, M.D., Clinical Instructor.  
 IRVING PUZISS, M.D., Clinical Instructor.  
 MELVIN M. REEVES, M.D., Clinical Instructor.  
 WALTER C. REINER, M.D., Clinical Instructor.  
 EDWARD E. RIPPEY, M.D., Clinical Instructor.  
 WILLIAM M. ROSENBAUM, M.D., Clinical Instructor.  
 WILLARD D. ROWLAND, M.D., Clinical Instructor.  
 AMBROSE B. SHIELDS, M.D., Clinical Instructor.  
 NATHAN SHLIM, M.D., Clinical Instructor.  
 RUDOLPH B. STEVENS, M.D., Clinical Instructor.  
 ROBERT H. TINKER, M.D., Clinical Instructor.  
 ALVIN O. UHLE, M.D., Clinical Instructor.  
 EDWARD E. WAYSON, M.D., Clinical Instructor.  
 JAMES W. WILEY, M.D., Clinical Instructor.  
 NATHANIEL D. WILSON, M.D., Clinical Instructor.  
 GREGG D. WOOD, M.D., Clinical Instructor.  
 JUSTIN A. AALPOEL, M.D., Resident.  
 ROBERT L. ANDERSON, M.D., Resident.  
 DANIEL J. BROSE, M.D., Resident.  
 ROBERT H. DUMKE, M.D., Resident.  
 RODERICK L. JOHNSON, M.D., Resident.  
 \*GARY H. LEAVERTON, M.D., Resident.  
 FERNANDO Q. LEON, M.D., Resident.  
 DONALD F. MAHNKE, M.D., Resident.  
 MICHAEL S. MASON, M.D., Resident.  
 WAYNE L. NORTON, M.D., Resident.  
 GEORGE C. SHONAT, M.D., Resident.  
 DONALD T. SMITH, M.D., Resident.  
 PHILIP A. SNEDECOR, M.D., Resident.  
 EUGENE S. SULLIVAN, M.D., Resident.

## Urology

CLARENCE V. HODGES, M.D., Associate Professor; Head of Division.  
 J. SCOTT GARDNER, M.D., Associate Clinical Professor.  
 JOHN R. HAND, M.D., Associate Clinical Professor.  
 THOMAS R. MONTGOMERY, M.D., Associate Clinical Professor.  
 THOMAS A. DAVIS, M.D., Clinical Associate.

\* On leave for military service.

G. DONALD BEARDSLEY, M.D., Clinical Instructor.  
 CHARLES E. CATLOW, JR., M.D., Clinical Instructor.  
 MARION A. CLARK, M.D., Clinical Instructor.  
 EMERSON J. COLLIER, M.D., Clinical Instructor.  
 SABERT A. HOTT, JR., M.D., Clinical Instructor.  
 JOHN F. LARSELL, M.D., Clinical Instructor.  
 DAVID P. PAULL, M.D., Clinical Instructor.  
 ARNOLD RUSTIN, M.D., Clinical Instructor.  
 GERALD W. SCHWIEBINGER, M.D., Clinical Instructor.  
 JOHN G. VANDENBERG, M.D., Clinical Instructor.  
 HUGH ANDERSON, M.D., Resident.  
 ROBERT B. GREENE, JR., M.D., Resident.  
 THEODORE H. LEHMAN, M.D., Resident.  
 CURTIS A. MACFARLANE, M.D., Resident.  
 ROBERT J. MOORE, M.D., Resident.

## Anesthesiology

FREDERICK P. HAUGEN, M.D., Professor; Head of Division.  
 J. COLEMAN EDWARDS, M.D., Assistant Professor.  
 MARION E. PALMER, M.D., Clinical Associate.  
 DONALD P. DOBSON, M.D., Clinical Instructor.  
 RUSSELL W. ENOS, M.D., Clinical Instructor.  
 FRANK E. MATHER, M.D., Resident.  
 MARSH O. PERKINS, M.D., Resident.  
 REX J. UNDERWOOD, M.D., Resident.  
 EVERETT E. WILSON, M.D., Resident.

## Orthopedic Surgery

WILLIAM E. SNELL, M.D., Associate Professor; Head of Division.  
 LEO SHERMAN LUCAS, M.D., Clinical Professor; Senior Consultant.  
 HARRY C. BLAIR, M.D., Associate Clinical Professor.  
 CARL ELMER CARLSON, M.D., Associate Clinical Professor.  
 E. GEORGE CHUINARD, M.D., Associate Clinical Professor.  
 LAWRENCE NOALL, M.D., Associate Clinical Professor.  
 FRANK B. SMITH, M.D., Associate Clinical Professor.  
 JOE BRADY DAVIS, M.D., Assistant Clinical Professor.  
 GURNEY A. KIMBERLEY, M.D., Assistant Clinical Professor.  
 JOHN F. ABELE, M.D., Clinical Associate.  
 RODERICK E. BEGG, M.D., Clinical Associate.  
 RICHARD F. BERG, M.D., Clinical Associate.  
 GEORGE W. COTTRELL, M.D., Clinical Associate.  
 HAROLD E. DAVIS, M.D., Clinical Associate.  
 JOSEPH H. GILL, M.D., Clinical Associate.  
 RICHARD J. HOPKINS, M.D., Clinical Associate.  
 ORVILLE N. JONES, M.D., Clinical Associate.  
 JAMES A. MASON, M.D., Clinical Associate.  
 FAULKNER A. SHORT, M.D., Clinical Associate.  
 THOMAS J. BOYDEN, M.D., Clinical Instructor.  
 ROBERT E. BUCKMASTER, M.D., Clinical Instructor.  
 PAUL CAMPBELL, M.D., Clinical Instructor.  
 WINFRED H. CLARK, M.D., Clinical Instructor.  
 HOWARD L. CHERRY, M.D., Clinical Instructor.



LAURENCE J. COHEN, M.D., Clinical Instructor.  
 CALVIN E. GANTENBEIN, M.D., Clinical Instructor.  
 LAURENCE R. LANGSTON, M.D., Clinical Instructor.  
 W. ROBERT McMURRAY, M.D., Clinical Instructor.  
 ROLLAND C. MERRIFIELD, M.D., Clinical Instructor.  
 ROBERT M. RANKIN, M.D., Clinical Instructor.  
 EDWIN G. ROBINSON, M.D., Clinical Instructor.  
 DONALD B. SLOCUM, M.D., Clinical Instructor.  
 RAYMOND CASE, M.D., Resident.  
 THOMAS A. EDWARDS, M.D., Resident.  
 CHARLES A. FAGAN, M.D., Resident.  
 RICHARD G. GARDNER, M.D., Resident.  
 WILLIAM G. GUYER, M.D., Resident.  
 JAMES V. HARBER, M.D., Resident.  
 CALVIN KEST, JR., M.D., Resident.  
 RALPH E. PETERSON, M.D., Resident.

### Ophthalmology

KENNETH C. SWAN, M.D., Professor; Head of Department.  
 AUGUSTUS B. DYKMAN, M.D., Clinical Professor.  
 E. MERLE TAYLOR, M.D., Clinical Professor.  
 LEONARD CHRISTENSEN, M.D., Associate Professor.  
 JOHN E. HARRIS, M.D., Associate Professor.  
 ROBERT V. HILL, M.D., Assistant Clinical Professor.  
 JOHN P. KEIZER, M.D., Assistant Clinical Professor.  
 THOMAS E. TALBOT, M.D., Assistant Clinical Professor.  
 ROBERT W. ZELLER, M.D., Assistant Clinical Professor.  
 ROBERT E. FISCHER, M.D., Clinical Associate.  
 ALFRED J. KREFT, M.D., Clinical Associate.  
 GEORGE P. LYMAN, M.D., Clinical Associate.  
 HENRY E. SCHLEGEL, M.D., Clinical Associate.  
 ROGER M. FLANAGAN, M.D., Clinical Instructor.  
 RICHARD E. MARKLEY, M.D., Clinical Instructor.  
 EDWARD N. MCLEAN, M.D., Clinical Instructor.  
 JOSEPH I. MORELAND, M.D., Clinical Instructor.  
 LETA B. GEHRSTZ, M.D., Research Associate.  
 ELLEN L. TALMAN, Ph.D., Research Associate.  
 K. NOLAN TANNER, Ph.D., Research Associate.  
 KENNETH M. GILES, B.S., Frank Ralston Student Assistant.  
 PAUL F. BAILEY, M.D., Resident.  
 ALBERT E. CARLSON, M.D., Resident.  
 ROBERT C. COWGER, M.D., Resident.  
 CLYDE H. DUVALL, JR., M.D., Resident.  
 WALTER R. ENDERS, M.D., Resident.  
 DON W. LIM, M.D., Resident.  
 PETER P. ROWELL, M.D., Resident.

### Otology, Rhinology, and Laryngology

GUY L. BOYDEN, M.D., Clinical Professor; Head of Department.  
 PAUL BAILEY, M.D., Clinical Professor.  
 DAVID D. DEWEESE, M.D., Clinical Professor.

ROBERT M. HANSEN, M.D., Clinical Professor.  
 LESTER T. JONES, M.D., Clinical Professor.  
 GEORGE E. CHAMBERLAIN, M.D., Associate Clinical Professor.  
 ROBERT B. KARKEET, M.D., Associate Clinical Professor.  
 WILBUR M. BOLTON, M.D., Assistant Clinical Professor.  
 HARRY M. BOUVY, M.D., Assistant Clinical Professor.  
 HOWARD E. CARRUTH, M.D., Assistant Clinical Professor.  
 CLIFFORD KUHN, M.D., Assistant Clinical Professor.  
 HAROLD R. LUCAS, M.D., Assistant Clinical Professor.  
 IRVING M. LUPTON, M.D., Assistant Clinical Professor.  
 BRUCE L. TITUS, M.D., Assistant Clinical Professor.  
 LEWIS W. JORDAN, M.D., Clinical Associate.  
 PAUL B. MYERS, M.D., Clinical Associate.  
 GEORGE C. SAUNDERS, M.D., Clinical Associate.  
 T. GLEN TEN EYCK, M.D., Clinical Associate.  
 HENRY VICTOR ADIX, M.D., Clinical Instructor.  
 CANFIELD BEATTIE, M.D., Clinical Instructor.  
 DONALD H. HOLDEN, M.D., Clinical Instructor.  
 DONALD C. METTLER, M.D., Clinical Instructor.  
 JACK B. MILLER, M.D., Clinical Instructor.  
 MAX SIMONS, M.D., Clinical Instructor.  
 RALPH N. WESTFALL, M.D., Clinical Instructor.  
 RICHARD A. HODGSON, M.D., Resident.  
 ALEXANDER E. PETROFF, M.D., Resident.

### Obstetrics and Gynecology

RALPH C. BENSON, M.D., Professor; Head of Department.  
 HOWARD C. STEARNS, M.D., Clinical Professor; Senior Consultant.  
 CLIFFORD FEARL, M.D., Associate Clinical Professor.  
 GUNNAR E. C. NELSON, M.D., Associate Clinical Professor.  
 GOODRICH C. SCHAUFFLER, M.D., Associate Clinical Professor.  
 WILLIAM M. WILSON, M.D., Associate Clinical Professor.  
 RODERICK C. BLATCHFORD, M.D., Assistant Clinical Professor.  
 RAPHAEL B. DURFEE, M.D., Assistant Professor.  
 DUNCAN R. NEILSON, M.D., Assistant Clinical Professor.  
 RONALD P. NEILSON, M.D., Assistant Clinical Professor.  
 THEODORE M. BISCHOFF, M.D., Clinical Instructor.  
 MELVIN W. BREESE, M.D., Clinical Instructor.  
 CHARLES L. CHAVIGNY, M.D., Clinical Instructor.  
 C. LOUISE CLANCY, M.D., Clinical Instructor.  
 OTTO R. EMIG, M.D., Clinical Instructor.  
 RICHARD W. FRANKLIN, M.D., Clinical Instructor.  
 W. RONALD FRAZIER, M.D., Clinical Instructor.  
 REMY W. FULSHER, M.D., Clinical Instructor.  
 ROBERT B. GREENE, M.D., Clinical Instructor.  
 WILLIAM L. HARTMANN, M.D., Clinical Instructor.  
 PHILIP H. HENDERSON, JR., M.D., Clinical Instructor.  
 ROBERT C. JACKSON, M.D., Clinical Instructor.  
 DAVID W. JAMES, M.D., Clinical Instructor.  
 GERALD E. KINZEL, M.D., Clinical Instructor.  
 GEORGE H. LAGE, M.D., Clinical Instructor.

F. KEITH MARKEE, M.D., Clinical Instructor.  
 ALFRED N. MARSHALL, M.D., Clinical Instructor.  
 JOHN O. MCCALL, JR., M.D., Clinical Instructor.  
 DAVID W. MOORE, M.D., Clinical Instructor.  
 MAX H. PARROTT, M.D., Clinical Instructor.  
 JESSE L. RAY, M.D., Clinical Instructor.  
 QUINTEN SCHERMAN, M.D., Clinical Instructor.  
 WILLIAM O. THOMAS, M.D., Clinical Instructor.  
 JAMES M. WHITELY, M.D., Clinical Instructor.  
 ROBERT D. YOUNG, M.D., Clinical Instructor.  
 RICHARD N. BOLTON, M.D., Resident.  
 JOSEPH C. MITCHELL, M.D., Resident.  
 JULES V. NAPIER, M.D., Resident.

### Pediatrics

ALLAN J. HILL, JR., M.D., Professor; Head of Department.  
 JOSEPH B. BILDERBACK, M.D., Clinical Professor.  
 JAMES W. ROSENFELD, M.D., Clinical Professor.  
 S. GORHAM BABSON, M.D., Associate Clinical Professor.  
 CHARLES BRADLEY, M.D., Associate Professor.  
 MORRIS L. BRIDGEMAN, M.D., Associate Clinical Professor.  
 SCOTT GOODNIGHT, M.D., Associate Clinical Professor.  
 RICHARD L. SLEETER, M.D., Associate Professor.  
 CARL G. ASHLEY, M.D., Assistant Clinical Professor.  
 JOHN H. BENWARD, M.D., Assistant Clinical Professor.  
 QUINTEN W. COCHRAN, M.D., Assistant Clinical Professor.  
 GEORGE W. DANA, M.D., Assistant Professor.  
 WALTER A. GOSS, M.D., Assistant Clinical Professor.  
 JOHN A. LARRABEE, M.D., Assistant Clinical Professor.  
 HEROLD S. LILLYWHITE, M.D., Ph.D., Assistant Professor of Speech Pathology.  
 JAMES E. ODELL, M.D., Assistant Professor.  
 DONALD E. PICKERING, M.D., Assistant Professor.  
 EDGAR M. RECTOR, M.D., Assistant Clinical Professor.  
 PAUL E. SHICK, JR., M.D., Assistant Clinical Professor.  
 LENDON H. SMITH, M.D., Assistant Clinical Professor.  
 ALVIN D. WERT, M.D., Assistant Clinical Professor.  
 JAMES P. WHITTEMORE, M.D., Assistant Clinical Professor.  
 DANIEL K. BILLMEYER, M.D., Clinical Instructor.  
 JOHN W. BUSSMAN, M.D., Clinical Instructor.  
 DELBERT A. FISHER, M.D., Instructor.  
 JOHN R. HANSEN, M.D., Clinical Instructor.  
 JOSEPH T. HART, M.D., Clinical Instructor.  
 EDWARD L. HENDRICKS, M.D., Clinical Instructor.  
 PETER H. HURST, M.D., Clinical Instructor.  
 FRANKLIN R. JOHNSON, M.D., Clinical Instructor.  
 BRACE I. KNAPP, M.D., Clinical Instructor.  
 GLENN E. LEMBERT, M.D., Clinical Instructor.  
 JOHN ARTHUR MAY, M.D., Clinical Instructor.  
 ROBERT J. MEECHAN, M.D., Instructor.  
 GEORGE A. NASH, M.D., Clinical Instructor.  
 GEORGE J. SCHUNK, M.D., Clinical Instructor.

WILLIAM M. SNOOK, M.D., Clinical Instructor.  
 JOHN L. STEVENSON, M.D., Instructor.  
 SARAH E. STEWART, M.D., Clinical Instructor.  
 CHARLES VARGA, M.D., Clinical Instructor.  
 GEORGE F. WALLIKER, JR., M.D., Clinical Instructor.  
 GORO NISHIDA, M.D., Fellow.  
 BYRON ANDREOU, M.D., Resident.  
 HENRY L. BOEHNKE, M.D., Resident.  
 JOSEPH V. BRAZIE, M.D., Resident.  
 WILLIAM ROBERT DAY, M.D., Resident.  
 DONALD F. KELLY, M.D., Resident.  
 YUKIO KUMASAKA, M.D., Resident.  
 CLEMMENS W. VAN ROOY, M.D., Resident.  
 RUTH WALTER, M.D., Resident.

## University of Oregon Medical School Hospitals and Clinics

DAVID W. E. BAIRD, M.D., Dean.  
 CHARLES N. HOLMAN, M.D., Associate Dean, Medical Director and Administrator.  
 JARVIS GOULD, M.D., Assistant Medical Director and Assistant Administrator.  
 WILLIAM A. ZIMMERMAN, B.S., Assistant Administrator.  
 GWYNN C. BRICE, Administrative Assistant; Assistant Director of Outpatient Clinic.

GEORGE M. AUSTIN, M.D., Chief of Surgery Neurological Service.  
 RALPH C. BENSON, M.D., Chief of Obstetrical and Gynecological Service.  
 GUY L. BOYDEN, M.D., Chief of Otolaryngological Service.  
 WILLIAM S. CONKLIN, M.D., Chief of Thoracic Surgical Service.  
 CHARLES T. DOTTER, M.D., Chief of Radiological Service.  
 THOMAS B. FITZPATRICK, M.D., Chief of Dermatological Service.  
 RAYMOND D. GRONDAHL, M.D., Chief of Clinical Pathological Service.  
 FREDERICK P. HAUGEN, M.D., Chief of Anesthesiology Service.  
 ALLAN J. HILL, JR., M.D., Chief of Pediatric Service.  
 CLARENCE V. HODGES, M.D., Chief of Urological Service.  
 WARREN C. HUNTER, M.D., Chief of Pathological Service.  
 ARTHUR C. JONES, M.D., Chief of Physical Medicine.  
 HOWARD P. LEWIS, M.D., Chief of Medical Service.  
 WILLIAM K. LIVINGSTON, M.D., Chief of Surgical Service.  
 HAROLD J. NOYES, D.D.S., M.D., Chief of Dental Medical Service.  
 GEORGE SASLOW, M.D., Chief of Psychiatric Service.  
 WILLIAM E. SNELL, M.D., Chief of Orthopedic Surgical Service.  
 KENNETH C. SWAN, M.D., Chief of Ophthalmological Service.  
 ROY L. SWANK, M.D., Chief of Neurological Service.  
 MILDRED BERGHEIM, M.A., M.S.W., Supervisor of Medical Social Service.  
 GRACE BLACK, O.T., Occupational Therapist.  
 A. J. CLEMONS, Superintendent of Physical Plant.  
 HILDA E. DRUM, R.T., Chief X-Ray Technician.  
 CLARENCE HULTGREN, M.A., P.T., Physical Therapist.  
 LAURA P. MARTIN, R.N., C.R.L., Chief Record Librarian.

MARJORIE P. MAXWELL, B.A., M.T., Chief Medical Technologist.  
 MARJORIE R. MERRICK, B.S., Chief of Admitting Service.  
 JOSEPH N. GEROU, Ph.G., Chief Pharmacist.

**University of Oregon Medical School Hospital  
 Doernbecher Memorial Hospital for Children**

SHIRLEY M. THOMPSON, M.A., R.N., Director of Nursing Service.  
 MARIE D. CLAPP, B.S., R.N., Admitting Supervisor.  
 ESTHER J. ROHRER, M.A., Credit Supervisor.  
 MYRTLE BARTHOLOMEW, R.N., Nurse Aide Supervisor.  
 MIRIAM CASSADY, M.A., R.N., Psychiatric Supervisor.  
 BETTY WEIBLE, B.S., R.N., Pediatric Supervisor.  
 ELEANOR MALLORY, R.N., Surgery Supervisor.  
 MAY E. RAWLINSON, B.S., R.N., Surgical Supervisor.  
 RUTH REMLY, R.N., Evening Supervisor.  
 EVELYN BARTON, R.N., Night Supervisor.  
 THELMA CROSLAND, R.N., Assistant Night Supervisor.  
 MARGARET ORTH, B.S., Dietitian.  
 MAXINE FREEMAN, Executive Housekeeper.  
 GLEN F. CRITESER, Laundry Manager.  
 DOROTHY CAHILL, R.N., Head Nurse.  
 FAY FRAHSKE, B.S., R.N., Head Nurse.  
 FREDERICKA GRABLE, R.N., Head Nurse.  
 ELIZABETH GRAVES, R.N., Head Nurse.  
 LOIS HART, B.S., R.N., Head Nurse.  
 ESTHER KELLY, R.N., Head Nurse.  
 REGINA MOCKMORE, B.S., R.N., Head Nurse.

**General Outpatient Service**

GWYNN C. BRICE, Assistant Director.  
 MARJORIE R. MERRICK, B.S., Chief Admitting Officer.  
 MARIAN W. PARSELL, B.S., R.N., Director of Nursing Service.  
 GERALDINE F. BARDY, B.S., Dietitian.

**Multnomah Hospital Unit**

JARVIS GOULD, M.D., Administrator and Assistant Medical Director.  
 VERNA JOHNSEN, R.N., Office Supervisor.  
 GALE RANKIN, R.N., Director of Nursing.  
 MARGARET FOX, R.N., Assistant Director of Nurses.  
 GEORGANN CHASE, B.S., R.N., Obstetrical Supervisor.  
 ALICE SHARF, R.N., Surgical Supervisor.  
 BARBARA BROWNE, B.S., R.N., Supervisor.  
 CHARLOTTE SCROGIN, R.N., Supervisor.  
 LAVERNE HONEY, R.N., Evening Supervisor.  
 JUNE SATCHFIELD, B.S., R.N., Evening Supervisor.  
 PATRICIA CAMERON, R.N., Night Supervisor.  
 EMMA H. McWILLIAMS, R.N., Night Supervisor.  
 HELEN COLGAN, Ph.G., Pharmacist.  
 HENRY L. DOENEKA, Chief Engineer.  
 WILLIAM FOUCH, Laundry Manager.  
 RAMONA McAFEE, B.S., R.N., Housekeeper.  
 RUTH MERCER, M.A., Dietitian.

JEAN CALDWELL, B.S., R.N., Head Nurse.  
 ELAINE DINGLE, B.S., R.N., Head Nurse.  
 ILAH ERICKSON, R.N., Head Nurse.  
 ARDYS HOKENESS, R.N., Head Nurse.  
 JOAN NAYSMITH, R.N., Head Nurse.  
 LEANN POOLE, R.N., Head Nurse.  
 BETTY ROYER, B.S., R.N., Head Nurse.  
 JEAN SCHROFFER, R.N., Head Nurse.  
 BERNICE SETERE, B.S., R.N., Head Nurse.  
 DOROTHY YOSHITOMI, B.S., R.N., Head Nurse.

**Tuberculosis Hospital Unit**

JAMES T. SPEROS, M.D., Assistant Medical Director and Director of Outpatient Clinic.  
 BARBARA HIATT, M.S., R.N., Superintendent.  
 ELSA SWARTZ, R.N., Supervisor.  
 JACKLYN PROKOPOVICH, R.N., Evening Supervisor.  
 NELLIE WHIPPLE, R.N., Night Supervisor.  
 LUCILLE DORRIS, R.N., Head Nurse.  
 MARIAN GREEN, B.S., R.N., Head Nurse.  
 MADELYN HABIGER, B.S., Dietitian.

**Visiting Physicians' Service**

RANDALL WHITE, M.D., Multnomah County Physician.  
 HAROLD DOBBIN, M.D., Physician.  
 ANTON D. ELMER, M.D., Physician.  
 MARCEL A. EMPEY, M.D., Physician.  
 DONALD P. MCGREEVEY, M.D., Physician.  
 EDWIN A. MICKEL, M.D., Physician.  
 WAYNE R. ROGERS, M.D., Physician.  
 RUDOLPH B. STEVENS, M.D., Physician.

**Oregon Psychiatric Services for Children  
 State Child Guidance Extension**

CHARLES BRADLEY, M.D., Associate Professor of Pediatrics and Psychiatry; Director.  
 MARVIN GREENBAUM, Ph.D., Assistant Professor of Clinical Psychology.  
 THELMA M. DANILSON, M.S.S., Instructor in Psychiatric Social Work.

**Crippled Children's Division**

RICHARD L. SLEETER, M.D., Director.  
 HEROLD S. LILLYWHITE, Ph.D., Speech and Hearing Consultant.  
 HERBERT E. GRISWOLD, JR., M.D., Cardiac Consultant.  
 WILLIAM E. SNELL, M.D., Orthopedic Consultant.  
 GLADYS BELL, A.B., Medical Social Work Consultant.  
 RUTH W. SPOERLI, M.S.S., Medical Social Work Consultant.  
 ELLEN MAE STANDARD, M.A., Medical Social Work Consultant.  
 DOROTHY M. PRINZING, M.A., R.N., R.P.T., Orthopedic Nursing Consultant.  
 MARVIN GREENBAUM, Ph.D., Consultant in Clinical Psychology.  
 DORIS CARR, B.S., R.P.T., Physical Therapist.  
 ELIZABETH J. FELLOWS, B.S., R.P.T., Physical Therapist.  
 MARCHETTA ALLEN, B.S., Speech Consultant.  
 VIRGINIA R. HATCH, B.S., Occupational Therapist.  
 MARGARET A. COSTELLO, Administrative Assistant.

# Enrollment and Degrees

## Degrees Conferred June 14, 1957

### Doctor of Medicine

GRADUATE	INTERNSHIP
Henry Isamu Akiyama.....	St. Vincent's Hospital, Portland, Ore.
Robert Lynn Anderson.....	University of Oregon Medical School Hospitals and Clinics, Portland, Ore.
Robert Verne Bain.....	Meadowbrook Hospital, Hempstead, N. Y.
Michael David Baird.....	University of Oregon Medical School Hospitals and Clinics, Portland, Ore.
William Alden Bishop.....	Good Samaritan Hospital, Portland, Ore.
Donald Brand Bowman.....	Madigan Army Hospital, Tacoma, Wash.
Robert Wayne Bruechert.....	Providence Hospital, Portland, Ore.
Charles Anthony Camarata.....	U.S. Naval Hospital, San Diego, Cal.
Craig Jennings Canfield.....	Good Samaritan Hospital, Portland, Ore.
Richard William Cauthorn.....	Good Samaritan Hospital, Portland, Ore.
John Eastmure Cleland.....	San Joaquin General Hospital, French Camp, Cal.
Robert Francis Corrigan.....	University of Oregon Medical School Hospitals and Clinics, Portland, Ore.
Royal W. DeLany.....	Tripler Army Hospital, Honolulu, T. H.
Rosemary Elizabeth Dell.....	The Doctors Hospital, Seattle, Wash.
Donald Duane Denney.....	University Hospital, Ann Arbor, Mich.
William Nick Dire.....	Minneapolis General Hospital, Minneapolis, Minn.
Arthur Lloyd Eckhardt.....	Ancker Hospital, St. Paul, Minn.
James Earl Elliott.....	University of Oregon Medical School Hospitals and Clinics, Portland, Ore.
Roy John Ellsworth.....	Philadelphia General Hospital, Philadelphia, Penn.
Robert James Emerson.....	Good Samaritan Hospital, Portland, Ore.
Roger Dalton Engberg.....	St. Luke's Hospital, Fargo, N. D.
John MacNaughton Epley.....	Jackson Memorial Hospital, Miami, Fla.
Earl Keith Flesherman.....	Sacramento County Hospital, Sacramento, Cal.
Henry Hung Chong Fong.....	District of Columbia General Hospital, Washington, D. C.
Byron Lynne Fortsch.....	University of Oregon Medical School Hospitals and Clinics, Portland, Ore.
Raymond F. Friedman.....	Minneapolis General Hospital, Minneapolis, Minn.
Edwin P. Gramlich.....	U. S. Naval Hospital, Oakland, Cal.
William Brooks Griffith.....	William Beaumont Army Hospital, El Paso, Tex.
Eugene Harold Holsinger.....	Sacramento County Hospital, Sacramento, Cal.
Raymond George Jewel.....	San Bernardino County Charity Hospital, San Bernardino, Cal.
Raymond Martin Johnson, Jr.....	University of Oregon Medical School Hospitals and Clinics, Portland, Ore.
Kendrick Kemps Jones.....	Temple University Hospital, Philadelphia, Penn.
John Power Kane.....	Santa Clara County Hospital, San Jose, Cal.
Kenneth Stanley Kilborn.....	Sacramento County Hospital, Sacramento, Cal.
James Davies Krueger.....	University of Oregon Medical School Hospitals and Clinics, Portland, Ore.
Chang Ho Lee.....	St. Vincent's Hospital, Portland, Ore.
Milton Kenneth McDowell.....	Madigan Army Hospital, Tacoma, Wash.
Ann Marie Meagher.....	Milwaukee County Hospital, Milwaukee, Wis.
William James Mikkelsen.....	University of Oregon Medical School Hospitals and Clinics, Portland, Ore.
Joe Shigeru Naemura.....	Providence Hospital, Portland, Ore.
Jack Naylor.....	Receiving Hospital, Detroit, Mich.
Lawrence Wayne O'Dell.....	Good Samaritan Hospital, Portland, Ore.
Archie O. Pitman, Jr.....	Good Samaritan Hospital, Portland, Ore.
George Alvin Porter.....	University of Oregon Medical School Hospitals and Clinics, Portland, Ore.
Richard Neal Prater.....	William Beaumont Army Hospital, El Paso, Tex.
Bette V. Purtzer.....	Minneapolis General Hospital, Minneapolis, Minn.
Arlen Quan.....	Sacramento County Hospital, Sacramento, Cal.
Donald Neal ReVill.....	Southern Pacific General Hospital, San Francisco, Cal.
David Wilkie Sarazin.....	Sacred Heart General Hospital, Eugene, Ore.
Charles Henry Sawyer.....	Southern Pacific General Hospital, San Francisco, Cal.

Jack Edwin Sinclair.....	University of Oregon Medical School Hospitals and Clinics, Portland, Ore.
William Alden Spencer.....	Providence Hospital, Portland, Ore.
Richard Martin Stevens.....	Good Samaritan Hospital, Portland, Ore.
Colin Vance Taylor.....	Good Samaritan Hospital, Portland, Ore.
Robert Sloat Tether.....	Good Samaritan Hospital, Portland, Ore.
Harlan Theodore Thoreson.....	Sacramento County Hospital, Sacramento, Cal.
Fredrick William Turner.....	Good Samaritan Hospital, Portland, Ore.
Waldo Raymond Varberg.....	Milwaukee County Hospital, Milwaukee, Wis.
Daniel V. Voiss.....	U. S. Naval Hospital, Bremerton, Wash.
Ernest Alan Waterman.....	University of Oregon Medical School Hospitals and Clinics, Portland, Ore.
Alton Enoch Wiebe.....	Good Samaritan Hospital, Portland, Ore.
Cameron James Wiley.....	Jefferson Medical College Hospital, Philadelphia, Penn.
David Lee Williams.....	Milwaukee County Hospital, Milwaukee, Wis.
James Anderson Wood.....	University of Oregon Medical School Hospitals and Clinics, Portland, Ore.
Richard Clyde Zimmerman.....	University of Oregon Medical School Hospitals and Clinics, Portland, Ore.

### Master of Science

James Otis Alben	William Brooks Griffith
Michael David Baird	John Power Kane
Clayton H. deBruin	George Alvin Porter
Donald Duane Denney	William Alden Spencer
Robert James Emerson	Daniel V. Voiss

## Enrollment, 1956-57

### Medical Students

#### First-Year Class

John T. Abraham, Jr.	David W. Johnson
Royal G. Aubrey	Albert R. Kearns
Roger A. Barnhart	Malcolm M. Kirk
John A. Beare	Darwin G. Lehfeldt
Charles S. Belknap	Ronald G. Lewis
R. Lee Belknap	Robert C. Loomis
Ernest J. Benner	Laury E. Lundberg
Lester L. Bergeron	W. Thurlow McCloud
David E. Billings	Robert A. McFarlane
Marie E. Brittin	Sam L. Meyer
Richard M. Burns	Michael J. Miller
Robert B. Campbell	John R. Obye
Charles B. Carter	LaVon C. O'Dell
Gunnar E. Christiansen	Rodger M. O'Harra
Juris Cilnis	Richard P. Panian
James T. Clay	Clarence D. Peters
John H. Cooke	Richard H. Phillips
William W. Cox	William B. Pollard
William V. Coyner	Donald D. Ramsthal
Richard V. Crisera	Keith A. Robertson
Dennis G. Crockett	Robert A. Roth
Clayton H. deBruin	James A. Saunders
John M. Deeney	Alexander J. Schleuning
Rolf R. Engel	Benjamin B. Shepherd
Eldon L. Erickson	Rosemary W. Stevens
William F. Farr	John H. Stone
James A. Fraser	William R. Stoner
Fredrick T. Fraunfelder	George R. Suckow, Jr.
P. Rocca Garofalo	Kenneth I. Sutherland
Robert H. Gustafson	K. Nolan Tanner
Archie Y. Hamilton	Norio Takayama
Edwin Hansen	Andrew N. Urbanc
Chris L. Herrigfeld	Vance Vaupel
J. Ivan Hewitt	Vernon V. Viles
David L. Hicks	Jerry Wetherell
Wesley R. Jacobs	Ralph E. Whiting
Joanne Jene	Homer L. Winslow
Robert H. Jensen	Richard K. Woodward

## Second-Year Class

Walter C. Bernards  
 Betty C. Blomquist  
 David G. Bragg  
 Robert M. Brown  
 John A. Buchler  
 Peggy J. Coppie  
 Nolan R. Cordon  
 Betty Jo Davenport  
 Wayne R. DeMott  
 H. Loring Dixon  
 Robert P. Doughton  
 Richard F. Drake  
 William James Dunlap  
 Edward C. Eberdt  
 Joseph W. Edgett, Jr.  
 Donald G. Edwards  
 John H. Ellison  
 John C. English  
 Riccardo R. Foggia  
 Jerry D. Giesy  
 Kenneth M. Giles  
 G. Sheldon Green  
 Donne G. Griffith  
 Kenneth B. Haevernich  
 Lawrence H. Hansen  
 Toshi Hasuike  
 Keith D. Holmes  
 William S. Hoskinson  
 Darrell H. Hunsaker  
 Lynn S. Husband  
 James D. Imbrie  
 Harley D. Kelley  
 Walter F. Krengel  
 John L. Linn  
 Robert C. Luther  
 Richard B. Lyons  
 Richard J. McCarty

David S. McDaniel  
 Walter E. Meihoff  
 Robert A. Mendelson  
 Tate M. Minckler  
 Winston A. Mitchell  
 Wayne L. Murray  
 Lew B. Myers  
 Dean E. Neal  
 Marilyn A. Nelson  
 Richard A. Nevé  
 James R. Orendurff  
 U. Scott Page  
 Willis E. Peacock  
 James L. Petroske  
 T. James Robnett  
 John N. Roehr  
 Richard A. Romaine  
 R. Bradley Sack  
 William H. Sack  
 George J. Sakurai  
 Richard D. Saloum  
 Delbert E. Scott  
 Glen S. Shipley  
 John D. Sigurdson  
 Ronald P. Smith  
 Russell T. Stodd  
 Roy D. Strand  
 Robert W. Straumfjord  
 Howard H. Sussman  
 John W. Thompson  
 Jimmy K. Tsujimura  
 Cecil A. VanKleek  
 Gaylord C. Weeks  
 Robert W. Wesche  
 Livingston M. F. Wong  
 Marvin R. Young

## Third-Year Class

Donald V. Adams  
 Robert J. Alzner  
 Ronald K. Arbon  
 S. Hugh Atchley, Jr.  
 Joseph W. Ball  
 John R. Barnes  
 Robert C. Black  
 Thomas G. Boland  
 William J. Brady  
 Bryce D. Breitenstein, Jr.  
 James R. Briggs  
 Richard D. Brust  
 Ralph J. Cannard  
 Peter B. Carter  
 Donald L. Cleland  
 Dorothy F. Cooney  
 Stephen E. Cox  
 Winston I. Cozine  
 F. Douglas Day  
 William L. DeBolt  
 Daniel L. Dennis  
 Larry N. Doyle  
 William E. Drips, Jr.  
 Philip P. Ernstrom  
 Dee L. Fuller  
 Peter Gong  
 Robert P. Griffin  
 Robert F. Haney  
 William P. Haney  
 John R. Hazel  
 Gerald N. Hecker

Lawrence R. Heiselt  
 Kenneth W. Hjortsvang  
 Arthur H. Holmboe  
 Robert H. Kroeger  
 Otto L. Loehden  
 Ronald J. Lowell  
 Dean M. Macy  
 Martin Magi  
 Louis R. McKael  
 Mark A. Melgard  
 John R. Miewald  
 John C. Misko  
 Donald A. Morrison  
 Edward H. Murphy  
 Ayako Nagasaka  
 James C. Newman  
 John K. Newton  
 Samuel A. Ojo  
 Robert L. Olson  
 E. Mansell Pattison  
 Ralph W. Paul  
 Catherine A. Poole  
 Donald D. Price  
 William J. Reeves  
 Donald E. Remlinger  
 Robert H. Riordan  
 John H. Rippey  
 Mason W. Robison  
 Charles M. Schultz  
 Richard D. Schultz  
 David A. Sears

Ramon G. Shoen  
 David D. Smith  
 Angus B. Stewart  
 William Tomori  
 Ove A. Tønning  
 Edward T. Toyooka  
 Simone Truong-Thi-Hue  
 William C. Tubbs

George J. Vennes, Jr.  
 Gerald L. Warnock  
 Robert E. Watson  
 Dale F. Webb  
 Miles L. Weber  
 Christopher P. S. Williams  
 Arthur N. Wilson, Jr.  
 Albert C. Witt

## Fourth-Year Class

Henry I. Akiyama  
 Robert L. Anderson  
 Robert V. Bain  
 Michael D. Baird  
 William A. Bishop  
 Donald B. Bowman  
 Robert W. Bruechert  
 Charles A. Camarata  
 Craig J. Canfield  
 Richard W. Cauthorn  
 John E. Cleland  
 Robert F. Corrigan  
 Royal W. DeLany  
 Rosemary E. Dell  
 D. Duane Denney  
 William N. Dire  
 Arthur L. Eckhardt  
 James E. Elliott  
 Roy J. Ellsworth  
 Robert J. Emerson  
 Roger D. Engberg  
 John M. Epley  
 E. Keith Fleshman  
 Henry H. Fong  
 Byron L. Fortsch  
 Raymond F. Friedman  
 Edwin P. Gramlich  
 W. Brooks Griffith  
 Eugene H. Holsinger  
 Raymond G. Jewel  
 R. Martin Johnson  
 Kemps K. Jones  
 John P. Kane

Kenneth S. Kilborn  
 James D. Krueger  
 Chang H. Lee  
 Robert E. Mammen  
 Milton K. McDowell  
 Ann M. Meagher  
 William J. Mikkelsen  
 Joe S. Naemura  
 Jack Naylor  
 Lawrence W. O'Dell  
 Archie O. Pitman, Jr.  
 George A. Porter  
 Richard N. Prater  
 Bette V. Purtzer  
 Arlen Quan  
 Donald N. ReVile  
 David W. Sarazin  
 Charles H. Sawyer  
 Jack E. Sinclair  
 W. Alden Spencer  
 Richard M. Stevens  
 Colin V. Taylor  
 Robert S. Tether  
 Harlan T. Thoreson  
 Frederick W. Turner  
 Waldo R. Varberg  
 Daniel V. Voiss  
 Ernest A. Waterman  
 Alton E. Wiebe  
 Cameron J. Wiley  
 David L. Williams  
 James A. Wood  
 Richard C. Zimmerman

## Graduate Students

James O. Alben  
 James G. Crakes  
 John C. Elwood  
 Catherine L. Gruber  
 Marvin C. Hines  
 Leonard N. Johnson  
 Paul W. Jones

Nicholas Kontaxis  
 Sofjan Lamid  
 Alicia E. Marco  
 James McNeese  
 Madhukar A. Pathak  
 Rose K. L. Wong

## Special Students and Auditors

William Sims

## Medical Technology Students

Robert W. Bohlman  
 Diana C. Brunner  
 Mary Elizabeth Cribby  
 Patricia K. Hahn  
 Leland S. Johnsen  
 Arthur Koehler  
 Kiyoe L. Kotaki  
 Nancy E. Leake  
 Marilyn A. Miller  
 Marilyn V. Miller

Wayne F. Mueller  
 Gerda M. Nergaard  
 David S. Newport  
 Manuel Pajon  
 Sandra K. Proebstel  
 Carol K. Richards  
 Marlene B. Sallup  
 Donald P. Snelling  
 Shirley L. Tonole  
 Milton L. Vail

## Summary of Enrollment, 1956-57

	Men	Women	Total
First year.....	72	4	76
Second year.....	69	4	73
Third year.....	74	4	78
Fourth year.....	63	3	66
Total regular students.....	278	15	293
Graduate students.....	10	3	13
Special students and auditors.....	3	..	3
Medical technology students.....	8	12	20
Total.....	299	30	329

Aalpoel, J. A., 58  
 Abele, J. F., 59  
 Acker, D. W., 54  
 Adams, D. V., 48  
 Adams, J. C., 56  
 Adams, J. J., 45, 46  
 Adix, H. V., 61  
 Alben, James, 48  
 Allen, C. V., 56  
 Allen, H. E., 50  
 Allen, Marchetta, 65  
 Allen, Marilouise, 48  
 Anderson, C. H., 45  
 Anderson, Hugh, 59  
 Anderson, R. L., 58  
 Andreau, Byron, 63  
 Ashley, C. C., 62  
 Aubrey, R. C., 49  
 Aumann, K. W., 51, 53  
 Austin, G. M., 56  
 Austin, J. H., 50, 54

Babson, S. G., 62  
 Bachman, D. M., 51  
 Bacon, R. L., 46, 47  
 Baglio, Corrado, 48  
 Bailey, P. F., 60  
 Bailey, Paul, 60  
 Baird, D. W. E., 7, 45, 46, 49, 63  
 Baker, H. W., 57  
 Baker, R. L., 50  
 Baptist, Mary E., 42, 48  
 Bardy, Geraldine, 64  
 Bartholomew, Myrtle, 64  
 Barton, Evelyn, 64  
 Basset, J. W., 57  
 Battalia, J. E., 57  
 Baxter, Betty, 48  
 Beall, S. T., 51  
 Beardley, G. D., 59  
 Beattie, Canfield, 61  
 Beatty, Clarissa, 47  
 Beckwith, H. G., 57  
 Begg, R. E., 59  
 Bell, Gladys, 65  
 Bennett, F. B., 7  
 Benson, R. C., 46, 61, 63  
 Bentley, F. H., 57  
 Benward, J. H., 62  
 Berg, A. W., 51  
 Berg, R. F., 59  
 Berger, E. H., 50, 53  
 Bergheim, Mildred, 63  
 Bergman, A. M., 50  
 Bergquist, S. F., 57  
 Best, B. H., 57  
 Bettman, A. G., 57  
 Bigej, A. L., 46  
 Bigley, R. H., 52  
 Bilderback, J. B., 62  
 Billmeyer, D. K., 62  
 Bischoff, T. M., 61  
 Bissett, R. A., 55  
 Black, Grace, 63  
 Blair, H. C., 59  
 Blake, W. D., 49  
 Blanchard, J. A., 51  
 Blatchford, R. C., 61  
 Blickle, J. F., 51  
 Blinc, N. L., 56  
 Bocek, Rose M., 47  
 Boehnke, H. L., 63  
 Bollam, D. C., 57  
 Bolton, R. N., 62  
 Bolton, W. M., 61  
 Bork, H. A., 7  
 Bouvy, H. M., 61  
 Boyden, A. M., 56  
 Boyden, G. L., 46, 60, 63

## Index of Names

Boyd, T. J., 59  
 Boylston, G. A., 50, 53  
 Bradley, Charles, 55, 62, 65  
 Brady, W. J., 48  
 Bramble, R. B., 20  
 Brandon, S. A., 54  
 Brazie, J. V., 63  
 Breese, M. W., 61  
 Brice, Gwynn C., 45, 63, 64  
 Bridgeman, M. L., 62  
 Brill, I. C., 50  
 Brookhart, J. M., 46, 49  
 Brose, D. J., 58  
 Browne, Barbara, 64  
 Brownlee, Inez, 47  
 Bruce, D. H., 54  
 Brunet, P. C., 47  
 Brunkow, C. W., 57  
 Brust, R. D., 48  
 Buckley, J. E., 57  
 Buckmaster, R. E., 59  
 Bueerman, Winfred H., 57  
 Burgner, P. R., 51  
 Burkes, D. C., 55  
 Burns, E. M., 50  
 Burton, W. Y., 55  
 Bussman, J. W., 62  
 Byrne, C. D., 7

Cabell, H. F., 6  
 Cahill, Dorothy, 64  
 Caldwell, Jean, 65  
 Cameron, Patricia, 64  
 Campbell, I. M., 55  
 Campbell, N. J., 57  
 Campbell, Paul, 59  
 Canparoli, S. D., 57  
 Carlson, A. E., 60  
 Carlson, C. E., 59  
 Carlson, W. H., 7  
 Carr, Doris, 65  
 Carruth, H. E., 61  
 Carter, C. B., 49  
 Carter, C. C., 51, 54  
 Case, Raymond, 60  
 Cassidy, Miriam, 64  
 Catlow, C. E., Jr., 59  
 Chamberlain, G. E., 61  
 Chase, J. D., 51  
 Chauncey, L. R., 56  
 Chavigny, C. L., 61  
 Chenoweth, B. R., 54  
 Cherry, H. L., 59  
 Christensen, Leonard, 60  
 Chuinard, E. G., 59  
 Clancy, C. Louise, 61  
 Clapp, Marie D., 64  
 Clark, M. A., 59  
 Clark, Winifred H., 59  
 Cleland, D. L., 47  
 Cleland, J. G. P., 57  
 Clemons, A. J., 45, 63  
 Clisby, K. M., 57  
 Cochran, Q. W., 62  
 Coffen, C. W., 50, 53  
 Coffey, R. M., 57  
 Cohen, L. J., 60  
 Cohen, William, 50, 53  
 Colgan, Helen, 64  
 Collier, E. J., 59  
 Collings, G. J., 55  
 Collins, R. L., 7  
 Colver, H. D., 57  
 Conklin, W. S., 50, 53, 56, 63  
 Costello, Margaret A., 65  
 Cottrell, G. W., 59  
 Cowger, R. C., 60  
 Cozine, W. J., 48  
 Cramer, J. F., 7  
 Criteser, G. F., 64

Crommelin, R. M., 50, 53  
 Crossland, Thelma, 64

Dahl, Joyle, 54  
 Dana, G. W., 62  
 Daniels, Farrington, Jr., 54  
 Danilson, Thelma M., 65  
 David, N. A., 46, 49  
 Davies, G. H., 47  
 Davis, A. M., 50, 53  
 Davis, E. W., 57  
 Davis, H. E., 59  
 Davis, J. B., 59  
 Davis, T. A., 58  
 Davis, W. R., 55  
 Day, W. R., 63  
 DeBolt, W. L., 49  
 DeGraft, Clara C., 48  
 Deitz, Estill N., 51  
 Dennis, D. L., 48  
 DeWeese, D. D., 60  
 DeWitt, Peter, 57  
 Diack, Arch, 57  
 Diack, Samuel, 51, 53  
 Dickel, H. A., 55  
 Dick, H. L. H., 49, 51  
 Dingle, Elaine, 65  
 Dittebrandt, Marlowe, 42, 48  
 Dixon, H. H., 55  
 Dobbin, Harold, 65  
 Dobson, D. P., 59  
 Dodson, R. M., 57  
 Doeneka, H. L., 64  
 Doris, Lucille, 65  
 Dotter, C. T., 46, 55, 63  
 Dow, R. S., 50, 54  
 Dowling, R. A., 51, 54  
 Drum, Hilda E., 56, 63  
 DeBois, E. D., 50  
 Dumke, H. H., 58  
 Durfee, Raphael B., 61  
 DuVall, C. H., Jr., 60  
 Dygart, H. P., Jr., 51  
 Dykman, A. B., 60

Edelson, Z. C., 57  
 Edwards, J. C., 59  
 Edwards, M. J., 52  
 Edwards, T. A., 60  
 Eisendorf, L. H., 57  
 Ekdahl, Marilyn J., 55  
 Eland, D. G., 55  
 Elmer, A. D., 65  
 Elwood, J. C., 48  
 Emig, O. R., 61  
 Empey, M. A., 65  
 Enders, W. R., 60  
 Engel, R. C. H., 50, 54  
 Enos, R. W., 59  
 Ericksen, W. G., 56  
 Erickson, H. M., 56  
 Erickson, Ilah, 65  
 Evans, J. W., 55  
 Everett, F. G., 55

Fadiga, Ettore, 49  
 Fagan, C. A., 60  
 Fearl, Clifford, 61  
 Fellman, J. H., 47, 54  
 Fellows, Elizabeth J., 65  
 Fenton, R. A., 47  
 Field, J. E., 50, 53  
 Finlay, J. D., 55  
 Finseth, L. S., 6  
 Fischer, R. E., 60  
 Fisher, D. A., 62  
 Fisher, Stella, 51  
 Fitzgibbon, J. H., 46, 49, 53  
 Fitzpatrick, T. B., 54, 63

Fixott, H. C., 55  
 Fixott, H. C., Jr., 55  
 Flanagan, R. M., 60  
 Flanery, J. R., 51  
 Forrester, J. W., Jr., 6  
 Forster, D. E., 50  
 Fouch, William, 64  
 Fowlks, W. L., 54  
 Fox, Margaret, 64  
 Fox, T. J., 57  
 Frabske, Fay, 64  
 Francone, Clarice A., 46  
 Franklin, R. W., 61  
 Frazier, W. R., 61  
 Frederick, Amby, 45  
 Freeman, Maxine, 64  
 Frisch, A. W., 46, 47  
 Frisch, D. C., 54  
 Frische, L. H., 56  
 Fujikura, Toshio, 48  
 Fulsher, R. W., 61

Galante, P. J., 51, 53  
 Galen, W. P., 51, 53  
 Gambee, L. P., 56  
 Gantenbein, C. E., 60  
 Gardner, J. S., 58  
 Gardner, R. G., 60  
 Garnjobst, W. M., 57  
 Garofala, Rocca, 48  
 Gaver, K. D., 55  
 Gee, P. S., 48  
 Gehrsitz, Leta B., 60  
 Geroud, J. N., 64  
 Ghaemi, Abolghassem, 52  
 Giesy, J. D., 46  
 Giles, K. M., 48, 60  
 Gill, J. H., 59  
 Gilmore, M. F., 50  
 Gilmore, Todd, 55  
 Goodman, M. J., 20, 50, 53  
 Goodman, Ora K., 45  
 Goodnight, Scott, 62  
 Gould, Jarvis, 45, 46, 50, 63, 64  
 Grable, Fredericka, 64  
 Grant, A. S., 6  
 Graves, Elizabeth, 64  
 Green, Marian, 65  
 Greenbaum, Marvin, 65  
 Greene, R. B., 61  
 Greene, R. B., Jr., 59  
 Greer, M. A., 49, 50, 53  
 Griffin, R. P., 49  
 Griswold, H. E., Jr., 50, 52, 65  
 Grondahl, R. D., 42, 46, 48, 63  
 Groshong, L. E., 57  
 Grover, M. R., Jr., 52  
 Guiss, J. M., 57  
 Gunberg, D. L., 47  
 Gurney, C. E., 56  
 Guyer, W. G., 60

Habiger, Madelyn, 65  
 Hallam, Bertha B., 45, 46  
 Hampton, J. B., 51  
 Hand, J. R., 58  
 Hanev, H. F., 46, 49, 52, 54  
 Hansen, F. S., 56  
 Hansen, J. R., 62  
 Hansen, R. M., 61  
 Harber, J. V., 60  
 Hardwick, C. E., 56  
 Hare, R. L., 51  
 Harpole, B. P., 57  
 Harris, H. H., 42, 48  
 Harris, J. E., 46, 47, 60  
 Harrison, W. D., 51  
 Hart, Lois, 64  
 Hart, J. T., 62  
 Hartmann, W. L., 49, 61  
 Harvey, H. T., 51, 53

Hatch, Virginia R., 65  
 Haugen, F. P., 46, 59, 63  
 Haugen, G. B., 55  
 Haworth, J. B., 56  
 Hayes, J. F., 57  
 Haynie, G. D., 52  
 Healy, T. S., 51, 54  
 Heller, C. G., 50, 53  
 Henderson, P. H., Jr., 61  
 Hendricks, E. L., 62  
 Hiatt, Barbara, 65  
 Higashi, Otataka, 52  
 Higginson, J. F., 58  
 Hill, A. J., Jr., 46, 62, 63  
 Hill, R. V., 60  
 Hinck, V. C., 56  
 Hines, Marvin, 48  
 Hodges, C. V., 58, 63  
 Hodgson, R. A., 61  
 Hokeness, Ardys, 65  
 Holcomb, Blair, 49, 53  
 Holden, D. H., 61  
 Holder, T. D., 55  
 Hollenbeck, W. F., 50, 53  
 Holloway, Charles, Jr., 6  
 Holmes, K. D., 47  
 Holman, C. N., 45, 46, 49, 63  
 Honey, La Verne, 64  
 Hopkins, C. E., 46, 56  
 Hopkins, R. J., 59  
 Horenstein, M. M., 51, 53  
 Hott, S. A., Jr., 59  
 Howard, M. A., 57  
 Hoyt, J. C., 51  
 Hughes, Margaret E., 45  
 Hultgren, Clarence, 63  
 Hunter, A. F., 56  
 Hunter, F. M., 7  
 Hunter, W. C., 46, 48, 63  
 Hurst, P. H., 62  
 Hurst, W. W., 51  
 Husband, L. S., 49  
 Hutchens, Tyra T., 42, 48  
 Hutchens, W. H., 55  
 Hutchinson, J. H., 52  
 Hyman, M. D., 56  
 Hyman, Selma, 55

Illge, Alferd, 54  
 Imbrie, J. D., 54  
 Inahara, Toshio, 58

Jackson, R. C., 61  
 Jacobs, W. R., 49  
 Jacobson, S. A., 48  
 James, D. W., 61  
 Jeffrey, R. T., 45  
 Jens, Ruth, 55  
 Jessel, C. T., 56  
 Johnson, Verna, 64  
 Johnson, F. R., 62  
 Johnson, L. N., 48  
 Johnson, R. B., 51, 54  
 Johnson, R. L., 58  
 Jones, A. C., 56, 63  
 Jones, L. T., 61  
 Jones, N. W., 46, 47  
 Jones, O. N., 59  
 Johnsrud, R. L., 57  
 Jordan, L. W., 61

Kammer, Huldrick, 50, 53  
 Karkeet, R. B., 61  
 Kavanaugh, J. D., 58  
 Kawashima, Etsuko, 56  
 Keizer, J. P., 60  
 Keller, R. B., 55  
 Kelly, D. F., 63  
 Kelly, Esther, 64  
 Kenin, Lena, 55  
 Kerr, Carol E., 46  
 Kerr, W. J., 7  
 Kiest, Calvin, Jr., 60  
 Kimberley, G. A., 59

Kingery, L. B., 54  
 Kinzel, G. E., 61  
 Kleinsorge, R. E., 6  
 Kloos, E. K., 57  
 Knapp, B. I., 62  
 Kokko, Ruth I., 51  
 Koler, R. D., 50, 54  
 Kontaxis, Nicholas, 48  
 Krakauer, L. J., 51, 54  
 Kreft, A. J., 60  
 Krippaehne, M. L., 51  
 Krippaehne, W. W., 57  
 Krygier, J. J., 50, 53  
 Kuhn, Clifford, 61  
 Kumasaka, Yukio, 63  
 Kvermland, B. N., 58

Labbe, R. F., 47  
 Labby, D. H., 46, 50, 53  
 Lage, G. H., 61  
 Laird, D. R., 57  
 Landreth, E. W., 42, 48  
 Langdon, J. R., 55  
 Langston, L. R., 60  
 Larrabee, J. A., 62  
 Larsell, J. F., 20, 59  
 Larsen, M. M., 52  
 Larson, W. L., 51  
 Leaverton, G. H., 58  
 Lee, G. P., 58  
 Lee, J. R., 56  
 Lehman, T. H., 59  
 Lembert, G. E., 62  
 Leon, F. O., 58  
 Lewis, H. P., 46, 49, 63  
 Liallalen, R. E., 7  
 Lilywhite, H. S., 62  
 Lim, D. W., 60  
 Lindgren, A. J., 51  
 Lindgren, V. V., 58  
 Littlehales, C. E., 50, 53  
 Liung, J. H., 42, 48  
 Livingston, K. E., 57  
 Livingston, W. K., 46, 56, 63  
 Livingstone, E. T., 52, 53  
 Lodmell, L. A., 51, 53  
 Long, G. B., 50, 53  
 Loomis, J. W., 56  
 Losli, E. J., 48

Lowell, L. M., 53, 57  
 Lucas, H. R., 61  
 Lucas, L. S., 59  
 Lupton, I. M., 61  
 Lyman, G. P., 60  
 Lyons, R. B., 47

MacDaniels, L. K., 52  
 Macfarlane, C. A., 59  
 Macne, Xenia, 49  
 MacNaughton, Cheryl S., 6  
 Mahnke, D. F., 58  
 Mallory, Eleanor, 64  
 Mammen, R. E., 49  
 Manville, I. A., 54  
 Marco, Alicia, 48  
 Marcum, R. W., 57  
 Margason, M. L., 49, 54  
 Markee, A. S., 56  
 Markee, F. K., 62  
 Markee, R. K., 58  
 Markley, R. E., 60  
 Marshall, A. N., 62  
 Martin, Laura P., 63  
 Martzloff, K. H., 56  
 Masenhimer, H. W., 52  
 Mason, D. C., 58  
 Mason, H. S., 47  
 Mason, J. A., 59  
 Mason, M. S., 58  
 Mass, R. E., 52  
 Massar, J. C., 54  
 Mattarazzo, Ruth G., 55  
 Mather, F. E., 59  
 Mathieson, W. L., 58

Matteri, R. R., 51, 52  
 Mattson, F. G., 55  
 Maurice, G. L., 52, 53  
 Maxwell, Marjorie P., 64  
 May, J. A., 62  
 McAfee, Ramona, 64  
 McAndrew, J. J., 54  
 McCall, J. O., Jr., 62  
 McCawley, E. L., 46, 49  
 McClure, C. R., 47  
 McCutchan, G. R., 51  
 McElveny, Lolita B., 45  
 McGreevey, D. P., 52, 65  
 McKirdie, Matthew, 57  
 McLean, E. N., 60  
 McMahan, R. A., 51  
 McMurray, W. R., 60  
 McWilliams, Emma H., 64  
 Meador, T. L., 56  
 Medved, N. E., 52, 54  
 Meecham, R. J., 62  
 Meek, E. C., Jr., 46, 48  
 Melgard, M. A., 47  
 Menne, F. R., 46, 48  
 Mercer, R. D., 55  
 Mercer, Ruth, 64  
 Merrick, Marjorie R., 64  
 Merrifield, R. C., 60  
 Mettler, D. C., 61  
 Michel, R. D., 52  
 Mickel, E. A., 65  
 Mihnos, F. O., 55  
 Miller, J. B., 61  
 Miller, Joseph, 51  
 Miller, R. F., 51  
 Miller, R. S., 56  
 Minckler, Jeff, 48  
 Mitchell, J. C., 62  
 Mockmore, Regina, 64  
 Montague, J. R., 51  
 Montgomery, T. R., 58  
 Moore, D. W., 62  
 Moore, M. W., 50, 52  
 Moore, R. J., 59  
 Moreland, J. L., 60  
 Munroe, W. R., 58  
 Murphy, J. J., 52  
 Myers, L. B., 49  
 Myers, P. B., 61

Nadal, J. W., 57  
 Napier, J. V., 62  
 Nash, G. A., 62  
 Naysmith, Joan, 65  
 Neilson, D. R., 61  
 Neilson, R. P., 61  
 Nelson, G. E., 61  
 Nelson, R. E., 55  
 Nevé, Richard, 48  
 Newman, Harry, 56  
 Nichols, G. B., 56  
 Nichols, H. M., 58  
 Nickerson, F. B., 7  
 Niles, N. R., 48  
 Nisbet, O. M., 57  
 Nishida, Goro, 63  
 Noall, Lawrence, 59  
 Nohlgren, J. E., 48  
 Norris, C. F., 46  
 Norton, W. L., 58  
 Noyes, H. J., 7, 46, 54, 63

Odell, J. E., 62  
 Oginsky, Evelyn L., 47  
 Oliver, Herman, 6  
 Olson, D. E., 52, 53  
 Rogers, W. R., 65  
 Onoprvenko, Ilarin, 47  
 Orth, Margaret, 64  
 Osgood, E. E., 46, 49, 54  
 Osgood, S. B., 56  
 Ovregaard, A. L., 56  
 Oyamada, Abe, 48

Packer, P. C., 7  
 Page, O. C., 52  
 Pallett, E. M., 6, 7  
 Palmer, M. E., 59  
 Paquet, J. F., 51  
 Parks, E. W., 20  
 Parrott, M. H., 62  
 Parsell, Marian W., 64  
 Pathak, Madu, 54  
 Patton, R. W., 58  
 Paull, D. P., 59  
 Paxton, H. D., 58  
 Pearson, A. A., 46, 47  
 Perkins, M. O., 59  
 Perkins, N. H., 52  
 Perley, Anne M., 47  
 Perlman, Frank, 50, 52  
 Peterson, C. G., 57  
 Peterson, Edward, 47  
 Peterson, Heyes, 51  
 Peterson, R. E., 60  
 Peterson, Ruth D., 47  
 Petroff, A. E., 61  
 Phatak, N. M., 49  
 Phillips, R. W., 56  
 Phillips, J. S., 55  
 Phillips, J. T., 46  
 Pickering, D. E., 46, 47, 62  
 Pierson, J. M., 51  
 Pirofsky, Bernard, 52, 54  
 Pitcairn, D. M., 49, 50, 53  
 Pommarane, Caroline H., 45, 46

Queen, F. B., 48

Raaf, John, 56  
 Rabenberg, J. R., 56  
 Raines, J. R., 56  
 Rampone, A. J., 49  
 Rankin, Gale, 64  
 Rankin, R. M., 60  
 Rawlinson, May E., 64  
 Ray, J. L., 62  
 Ray, L. F., 54  
 Reaume, R. B., 53  
 Rector, E. M., 62  
 Reed, C. E., 52  
 Rees, S. E., 56  
 Reeves, M. M., 58  
 Reeves, W. J., Jr., 48  
 Reiner, W. C., 58  
 Remly, Ruth, 64  
 Richards, J. R., 6, 7, 45, 46  
 Richards, O. R., Jr., 52  
 Rickles, N. H., 55  
 Riddle, M. C., 46, 50  
 Rigas, D. A., 47, 50  
 Riley, J. A., 52, 54  
 Rinehart, R. E., 52  
 Rippey, E. E., 58  
 Rittel, R. C., 55  
 Ritzmann, L. W., 50  
 Roberts, J. M., 57  
 Robins, G. M., 52  
 Robinson, E. G., 60  
 Robnett, T. J., 49  
 Rockey, E. W., 56  
 Rogers, A. L., 51, 53  
 Rogers, W. R., 65  
 Rohrer, Esther J., 64  
 Rose, L. B., 52, 53  
 Rosenbaum, E. E., 51  
 Rosenbaum, W. M., 58  
 Rosenblatt, M. S., 57  
 Rosenfeld, J. W., 62  
 Ross, B. B., 49  
 Rowell, P. P., 60

Rowland, W. D., 58  
 Royer, Betty, 65  
 Rush, H. P., 46, 49, 52  
 Rustin, Arnold, 59

Sack, W. H., 48  
 St. Pierre, E. W., 57  
 Saslow, George, 55, 63  
 Satchfield, June, 64  
 Saunders, G. C., 61  
 Saunders, T. S., 54  
 Savarra, B. S., 55  
 Schafer, W. W., 55  
 Schaeffler, G. C., 46, 61  
 Scherman, Quinten, 62  
 Schlegel, H. E., 60  
 Schneider, A. V., 52  
 Schneider, R. W., 52, 53  
 Schropfer, Jean, 65  
 Schultz, R. D., 48  
 Schunk, G. J., 62  
 Schwartz, Marvin, 51, 53  
 Schwiebinger, G. W., 59  
 Scott, Jean, 48  
 Scott, W. C., 51  
 Scrogin, Charlotte, 64  
 Seabrook, D. B., 56  
 Seaman, A. J., 50, 54  
 Sears, D. A., 48  
 Sears, H. J., 47  
 Seiji, Madoto, 54  
 Selling, Laurence, 47  
 Selling, Philip, 50, 53  
 Setere, Bernice, 65  
 Seufert, L. L., 52  
 Shanklin, J. G., 55  
 Sharp, Alice, 64  
 Sheldon, W. H., 49  
 Shepherd, B. B., 46, 49  
 Sherburne, J. W., 7  
 Shick, P. E., Jr., 62  
 Shields, A. B., 58  
 Shippy, F. C., 56  
 Shlim, Nathan, 58  
 Shonat, G. C., 58  
 Short, F. A., 20, 59  
 Siddoway, R. R., 53  
 Sigurdson, J. D., 49  
 Simons, Max, 61  
 Sleeter, R. L., 46, 62  
 Slocum, D. B., 60  
 Smalley, R. B., 57  
 Rector, E. M., 62  
 Smith, D. T., 58  
 Smith, Doris C., 56  
 Smith, F. B., 59  
 Smith, L. H., 62  
 Snedecor, P. A., 58  
 Sneed, V. D., 48  
 Snell, W. E., 59, 63, 65  
 Snook, W. M., 63  
 Soelling, J. L., 52, 54  
 Speros, J. T., 50, 53, 65  
 Speros, Margaret H., 52, 54  
 Spoerli, Ruth W., 65  
 Standard, Ellen M., 65  
 Stearns, H. C., 61  
 Steffanoff, D. N., 57  
 Steinberg, M. E., 49  
 Stephens, J. W., 52, 53  
 Stevens, Janice R., 51, 54  
 Stevens, R. B., 58, 65  
 Stevenson, E. N., 7  
 Stevenson, J. L., 63  
 Stewart, Sarah E., 63  
 Stotler, W. A., 47  
 Straumfjord, J. V., 47  
 Straumfjord, R. W., 48  
 Strand, A. L., 7  
 Suher, Theodore, 55  
 Sullivan, A. W., 20  
 Sullivan, E. S., 58  
 Sullivan, R. R., 54  
 Swan, K. C., 46, 60, 63

- Swank, R. L., 50, 54, 63  
 Swartley, J. W., 20  
 Swartz, Elsa, 65  
 Swett, W. J., 51, 53
- Takalo, D. S., 42, 48  
 Talbot, T. E., 60  
 Tall, R. K., 55  
 Talman, Ellen L., 47, 60  
 Tanner, K. N., 47, 60  
 Tatum, D. E., 52  
 Taylor, D. K., 51  
 Taylor, D. R., 52  
 Taylor, E. M., 60  
 Ten Eyck, T. G., 61  
 Thomas, W. O., 62  
 Thompson, Shirley M., 64  
 Thompson, W. W., 55  
 Tinker, R. H., 58  
 Titus, B. L., 61  
 Todd, W. R., 46, 47  
 Toyooka, E. T., 49  
 Trainer, J. B., 45, 46, 49, 50  
 Trommald, J. P., 57  
 Tuhy, J. E., 50, 53  
 Tunturi, A. R., 47  
 Uhle, A. O., 58
- Underwood, Frank, 50, 52  
 Underwood, R. J., 59  
 Urbano, A. N., 49
- Van Bruggen, J. T., 47  
 Vandenberg, J. G., 59  
 Van Rooy, C. W., 63  
 Varga, Charles, 63  
 Varney, G. C., 20  
 Veazie, Lyle, 47  
 Vidgoff, Ben, 51
- Wagner, Marie K., 45  
 Walker, S. A., 54  
 Waliker, G. F., Jr., 63  
 Walsh, W. E., 6  
 Walter, Ruth, 63  
 Warren, J. W., 52  
 Watkins, J. G., 54  
 Wayson, E. E., 58  
 Weber, M. L., 46  
 Weible, Betty, 64  
 Weinzirl, Adolph, 46, 56  
 Welborn, W. S., 53  
 Welch, J. D., 51  
 Wert, A. D., 62  
 West, E. S., 46, 47  
 Westfall, R. N., 61
- Whipple, Nellie, 65  
 White, Randall, 65  
 Whitely, J. M., 62  
 Whittemore, J. P., 62  
 Wiley, J. W., 58  
 Wilson, C. P., 50  
 Wilson, E. E., 59  
 Wilson, N. D., 58  
 Wilson, O. M., 47, 45, 46  
 Wilson, R. D., 52  
 Wilson, W. M., 61  
 Wirtschafter, Z. T., 50  
 Wise, R. A., 57  
 Wong, Rose, 48  
 Wood, G. D., 58  
 Woodson, J. L., 55  
 Woodworth, J. V., 52  
 Woolley, I. M., 56
- Yang, Y. H., 48  
 Yasunobu, K. T., 47  
 Yoshida, Yoshio, 54  
 Yoshitomi, Dorothy, 65  
 Young, R. D., 62
- Zeller, R. W., 60  
 Zeller, W. E., 57  
 Zimmerman, W. A., 45, 46, 63