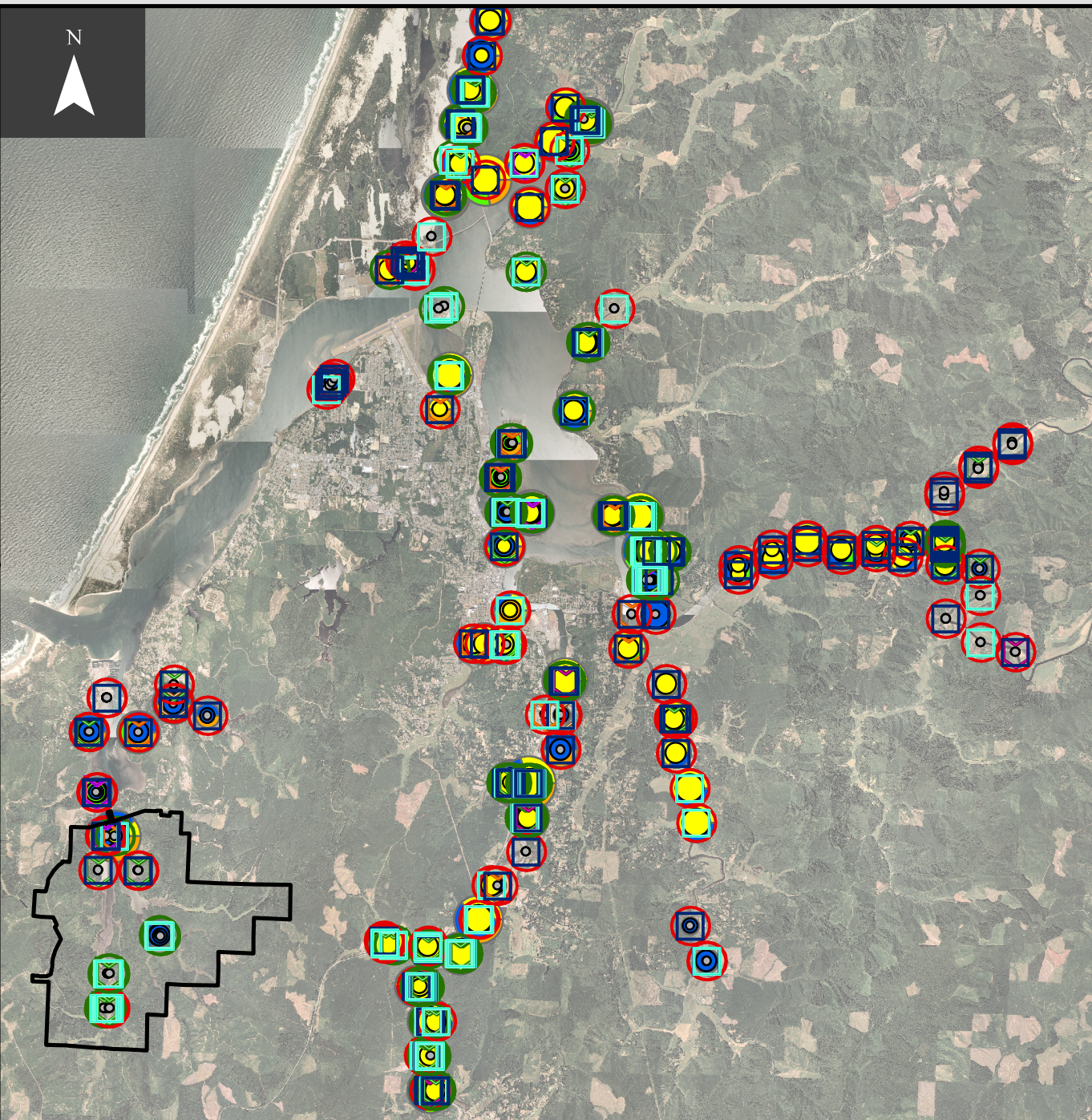


Distribution and Density of Native and Invasive Mesogastropod Snails in the Coos Bay Estuary, 2009



A. parasitologica (New Invasive)

- Absent (0)
- Rare (1-10)
- Common (11-100)
- Abundant (100+)

A. californica (Native)

- Absent (0)
- Rare (1-10)
- Common (11-100)
- Abundant (100+)

M. myosotis (Invasive)

- Absent (0)
- Rare (1-10)
- Common (11-100)
- Abundant (100+)

L. subrotundata (Native)

- Absent (0)
- Rare (1-10)
- Common (11-100)
- Abundant (100+)

All Snails Proportional Pies

- *A. parasitologica* (I)
- *A. californica* (N)
- *L. subrotundata* (N)
- *M. myosotis* (I)

Based on estimated snail numbers per 0.5m²

Dominant Vegetation

- ▭ *Carex*
- ▭ *Distichlis*
- ▭ *Jaumea*
- ▭ *Salicornia*
- ▭ *Triglochin*

Marsh Topography

- Broad
- Compressed
- High
- Low



1.5 mi 3 mi