

Appendix B

Expanded Parks Inventory

An inventory and condition assessment is critical to the process of planning for the future of a city’s park system. This process identifies what facilities are available to the city and establishes the condition they are in. This inventory includes parkland owned by the city that is both developed and undeveloped. It also includes information regarding school-owned and privately owned recreation facilities that are available to residents.

The inventory was completed using information obtained from the City, as well as field visits to each park facility. The CPW team was accompanied during the inventory by parks commission members, Gordon Mobley and Jacqueline Hanford and Public Works Superintendent Lester Naught.

Talent currently owns and maintains 36.38-acres of developed parkland and 21.61-acres of undeveloped parkland, comprising 57.99-acres of City-owned parkland.¹ A summary of developed and undeveloped facilities is presented in Table B-1.

Table B-1. Park Facility Inventory

Facility	Acres
Developed Sites	
Old Town Park	0.96
Chuck Roberts Park	12.34
Kamerin Springs Park	0.21
Lynn Newbry Park	2.46
Talent Commons	1.00
Bear Creek Greenway	19.19
Old Bridge Village Greenway	0.22
<i>Subtotal</i>	36.38
Undeveloped Sites	
Wagner Creek Park	0.76
Wagner Creek Greenway	1.53
Joseph Park	0.28
Whackers Hollow	5.15
DeYoung Property	13.89
<i>Subtotal</i>	21.61
Total	57.99

Source: CPW, City of Talent 2006

¹ This total includes three properties not currently owned by the City, the 2.46-acre Lynn Newbry Park, the 0.21-acre Kamerin Springs Park, and the 0.22-acre Old Bridge Village Greenway. Lynn Newbry Park is owned by the State of Oregon and leased by the City of Talent. The City currently maintains and operates the facility. Kamerin Springs Park is currently owned by a developer and will be deeded to the City once the surrounding residential development is complete. The Old Bridge Village Greenway is owned by the Old Bridge Village Homeowner’s Association. Public access is provided through a pedestrian easement along Wagner Creek.

Developed Park Facilities

Talent has seven developed parks, comprising 36.38-acres of developed parkland. Chuck Roberts Park, the city's largest park, and the city-owned parcels along the Bear Creek Greenway make up the majority of this acreage. Other developed parks are relatively small and dispersed. This section describes the size, location, condition and amenities for each of the park facilities.

Old Town Park

Old Town Park is a 0.96-acre special use park located along Main Street and John Street in the heart of Talent. Surrounding the park is a combination of business and civic land uses. The Central Oregon and Pacific Railroad runs along the western border of the park. The park is also located across the street from the site of the new Talent city hall and library, which will have a common area (Talent Commons).

The majority of the site is dedicated to a skateboard and bike park. This portion is entirely concrete and surrounded on all sides by fencing. Another significant section of the site is dedicated to passive recreation. The area contains lawn, four benches, a barbeque grill, shrub and flower plantings, and is bisected by a sidewalk and a mulch pathway that follows the railroad tracks. The park also contains a bathroom facility, a picnic shelter and two drinking fountains.

The site is relatively new and in good condition. Old Town Park is the only park in the area that permits bicycle use. Bicycle use is a source of significant damage to the park and concrete replacement is a concern. Vandalism is another concern. Park amenities have been damaged or stolen in the past, and a significant amount of city funds are required to clean graffiti in the skatepark bowls. The park is lighted only by the streetlights that run along John Street.





Chuck Roberts Park

Chuck Roberts Park is a 12.34-acre facility located at the intersection of Talent Avenue and Rogue River Parkway in the southern part of town. The park is bordered by an industrial park to the north, residential areas to the south and east, and the Central Oregon and Pacific Railroad to the west. Chuck Roberts Park is Talent's largest park and the only existing community park.

The park contains four developed baseball/softball fields, a basketball court, two tennis courts, and a children's play area. The park includes an open lawn area between the baseball/softball fields and the tennis and basketball courts. Two backstops are located in each corner of the lawn area, which is otherwise devoid of any improvements. Several small trees also dot this area. The courts and fields are in generally good condition; however, some of the areas surrounding these facilities, including the parking lot, are in need of maintenance and repair. Facilities on the eastern end of the park include a picnic shelter with four picnic tables, and recently constructed restrooms. The picnic areas include BBQ grills and trash cans.

The City has entered into a long-term lease arrangement with the Phoenix Talent Little League, Inc. for the operation and management of an area of the park dedicated to baseball. The League has developed covered dugouts, bleachers, a restroom, food concession, and a maintenance building. There is also a gravel parking area adjacent to the fields. The lease allows for the City's use of the area in the off-season under specific requirements.

The park is fenced on its southern boundary, but includes access points to the adjacent neighborhood. The baseball/softball fields also include a locked gated parking area. The park currently has a bike rack that is old and moveable.

This park was originally acquired and developed with Federal Land and Water Conservation Funds in 1977. The stipulation of that requires that the entire park area be perpetually dedicated to recreational uses and subject to all the terms and conditions of that original grant.



Kamerin Springs Park

Kamerin Springs is a 0.21-acre facility located between Talent Avenue and Highway 99, near the intersection of Lithia Way and David Way. The site was constructed by a developer in conjunction with the surrounding residential development.

The facility contains a half court basketball court, a children's play area and a rectangular gazebo that also serves as a picnic shelter. There is a small pond in the northeast corner of the park. The site also has a small parking lot on the west end that accommodates approximately five vehicles. It is apparent that grass will cover the majority of the site and several small trees have been introduced.

The facility is bordered to the north by a mobile home park. A fence, requested by the mobile home park owner, separates the park from the adjacent mobile home park making access from that direction problematic.





Lynn Newbry Park

Lynn Newbry Park is a 2.46-acre facility located on the east side of Bear Creek along the Bear Creek Greenway just south of the Valley View Road Bridge. The facility is not currently owned by the city but leased from the State of Oregon. Lynn Newbry Park serves as both a destination for residents as well as a stopping point for travelers along the Bear Creek Greenway.



The park has significant tree coverage, and the greenway border to the south is largely covered with shrubs. The park consists of a picnic shelter with two picnic tables, a trash can and a BBQ grill, and an exercising and stretching station. The picnic shelter and tables are in good repair, however the exercise and stretching station appears somewhat outdated, worn and perhaps underused. Other facilities include concrete fire pits, a small maintenance shed, and a small parking lot with capacity for approximately 20 vehicles. The parking lot is in need of resurfacing.

Safety is a concern in Lynn Newbry Park, particularly issues surrounding drug use. Although the park has river access, swimming is prohibited, due to high bacteria levels in Bear Creek at certain times of the year. Lynn Newbry Park provides potential wildlife viewing and, because steelhead salmon spawn in Bear Creek, presents fishing opportunities.



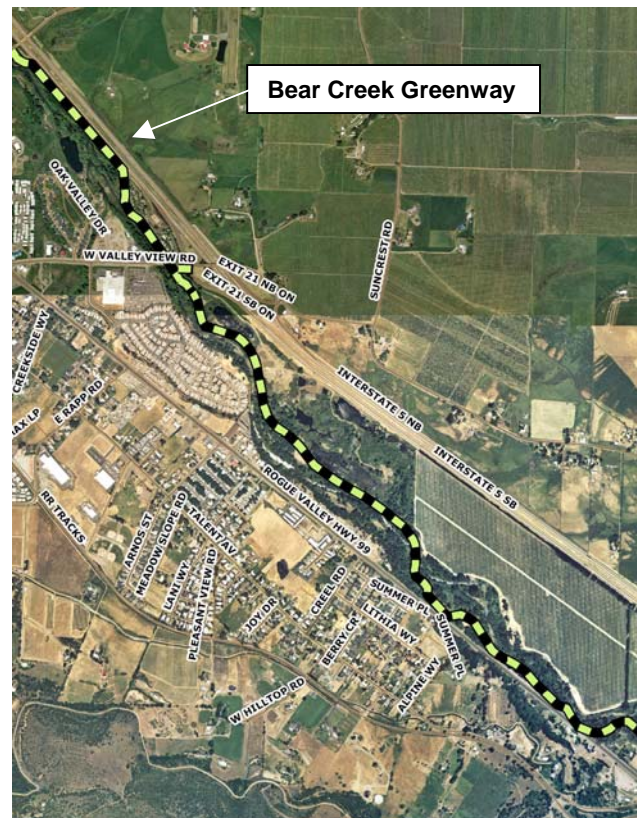
Currently under construction is a new Valley View Bridge, which is directly adjacent to this park. The new bridge will include a separated bike/pedestrian sidewalk access to the park. This will connect the park more directly to the City with pedestrian links.

Talent Commons

Talent Commons is a 1.00-acre site located northwest of Main Street on “T” Street. Talent Commons is situated between the existing County Library and the new Jackson County Library. Although neither the park facility nor the Jackson County Library have been built, they are currently under construction and therefore the park facility is included in the inventory. When constructed, the park will contain a children’s play area, restrooms, an open commons area, a gazebo, lawn, and trees. Talent Commons will connect the new library, historical society, Community Center, and new City Hall. It is expected that it will serve as a central community gathering place in the downtown.

Bear Creek Greenway

The City of Talent owns several parcels along Bear Creek comprising 19.19-acres. Within the context of this plan, **Bear Creek Greenway** refers to those City-owned parcels. Bear Creek Greenway also refers to a publicly owned corridor that stretched from Ashland to Central Point. Currently, Jackson County maintains large sections of the greenway. A shared management and maintenance agreement between the county and all the cities along the greenway is under development.





Old Bridge Village Greenway

This 0.22-acre greenway is located along the east side of Wagner Creek east of Talent Avenue. The site is part of residential development to the south and provides City residents access to the creek through a pedestrian easement.

Old Bridge Village Greenway contains a paved walkway which runs along Wagner Creek for approximately 300 feet. Tree and riparian plantings line the creek along the greenway. The site has potential for linkages to the east (East Talent and the DeYoung Property).



Undeveloped Park Facilities

Talent has five undeveloped park facilities totaling 21.61-acres. The sites vary in size and are all situated adjacent to or near Bear Creek or Wagner Creek. This section describes the location, size, condition and potential for each of these sites.

Wagner Park

Wagner Park is a 0.76-acre site located on the north side of Rapp Street, where it crosses Wagner Creek. The site is surrounded by residential areas to the north, east and west. The area to the south contains an orchard that stretches to the southwest.

Wagner Creek borders the park to the south and provides significant riparian vegetation. The park has very few improvements. It is largely grass, though the northern half of the site is populated by small pine trees planted by a local volunteer group. Large tree trunks have been laid down along the eastern border of the lawn to divert high water. There is also irrigation access on the site.



Wagner Creek Greenway

Wagner Creek Greenway is a 1.53-acre site located along Wagner Creek north of Rapp Road. The site consists of a narrow section of the eastern bank of Wagner Creek separated from Wagner Park by the creek. The site can only be accessed by crossing Wagner Creek at Rapp Street. The site contains a narrow unimproved footpath and a steep vegetated slope along the eastern creek bank. The site is one of several segments of City-owned greenway along Wagner Creek.





Joseph Park

Joseph Park is a 0.28-acre site located on Joseph Street along Wagner Creek. The site is bounded on both sides by residential homes. The City obtained the site after flooding in 1996 destroyed two homes and made the parcel unbuildable. The southern edge of the site is significantly lower in elevation and consists of the riparian area along the Wagner Creek Greenway. The remainder of the site is lawn. A sidewalk fronts the park.

The site is extremely small and bordered by private homes. Joseph Park is in very close proximity to Wagner Park. Establishing a connection to Wagner Park would require the purchase of private property to the west of the park.

Whacker's Hollow (Suncrest Park)

This 5.15-acre site is located between Suncrest Road and the Bear Creek Greenway in the northernmost corner of Talent. It is bounded to the north by residential homes along Willow Springs Drive, and on the south by residential developments along Oak Valley Drive. The site was formerly used as a driving range for golfers, hence the current name. The City has been allowing fill material from various projects to be deposited on the site in an effort to level the site in preparation for the future location of playing fields. Much of the site is still steeply sloped.



The city has expressed a desire to develop an active recreation park on the site. The site also has strong potential for linkages to the Bear Creek Greenway, the DeYoung Property, and Lynn Newbry Park.

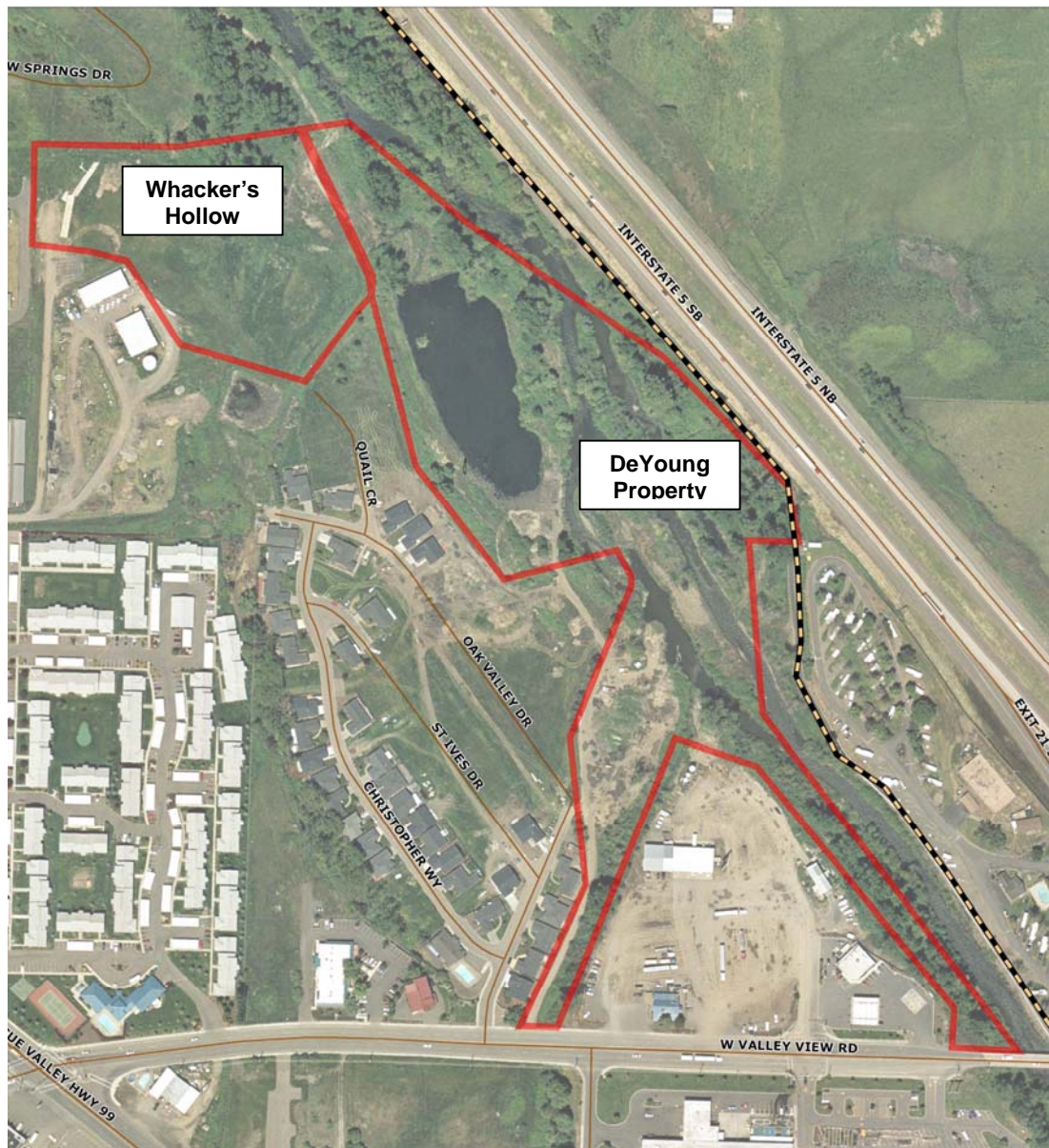
DeYoung Property

The DeYoung property is a 13.89-acre parcel located between Oak Valley Drive and the Bear Creek Greenway, just southeast of Whacker's Hollow. The City does not currently own the property but is anticipating acquiring it through dedication by a local developer. The property consists primarily of a pond, located adjacent to Bear Creek with two smaller "fingers" stretching southeast along Bear Creek and south to West Valley View Road. Although the City may acquire the property in the short-term, the current owner has indicated a desire to continue gravel operations on the south finger for a yet to be determined period to time.



The developer of the Clearview Development project located west of the property between Suncrest Road and Highway 99 is negotiating the use of the pond for stormwater detention from their proposed development. There is enormous potential for connections between the property and both the Bear Creek Greenway and the Whacker's Hollow property, where none currently exist.

Aerial Photo of Whacker's Hollow and the DeYoung Property



The inventory provides information on schools, civic and private recreation areas available to the public, as well as those parks that may be outside the community but are commonly used by Lebanon residents. Acknowledgment of these facilities, and the services they provide to the community, is important when making decisions addressing future facility siting and community needs.

School District Facilities

The Phoenix/Talent School District administers two schools in Talent, Talent Middle School and Talent Elementary School. The district also owns the Colver Road Fields northwest of the city boundaries.

Talent Middle School

Talent Middle School is located just northwest of the Rapp Road/Wagner Creek Road intersection. The school's only access is Christian Avenue off of Wagner Creek Road. The site contains approximately 8.2-acres of parkland. Facilities on the site include a sports field with football uprights and a running track around it, six basketball hoops (mounted on the school's outside wall), pull-up bars, and a large playground. Vegetation lines the southern and western boundaries of the site and the eastern half is dominated by an open area with grass. The playground is new and in excellent condition. The school's other amenities are in fair condition.

Talent Elementary School

Talent Elementary School is located just east of the middle school on the opposite side of Wagner Creek Road and along School House Road. The 6.1-acre site contains a playground area with a swing set, a full sized soccer field, a running track and a full basketball court. The site appears in good condition. A fence surrounds the site and there is signage indicating that the area is closed for school use until 4:00 pm on school days.

Colver Road Fields

The Colver Road facility is located on the south side of Colver Road approximately a ¼ mile west of the Central Oregon and Pacific Railroad line. The 25.8-acre site contains 2 baseball/softball fields and 2 soccer fields. The baseball/softball fields have covered dugouts. Several parking areas surround the fields. Approximately 20% of the site, consisting of a large area located in the southeast corner and a small section in the southwest corner, are undeveloped and currently exists as open space.

Private Park and Recreation Facilities

Private recreation providers are an important source of recreation facilities and activities for communities. The following is a summary of private park and recreation providers in Talent.

Boys and Girls Club

Talent's Boys and Girls Club is located just north of the Elementary School at the corner of Main Street and Wagner Street. The parks space on the site is less than a 1/3 of an acre and contains a mid-sized playground, picnic tables and a full basketball court. The site is fenced in with entrances on the north and south.

County/State Facilities

Talent contains one recreation facility owned by a combination of state, county, and city entities. This section provides a description of the Bear Creek Greenway.

Bear Creek Greenway

The Bear Creek Greenway runs north and south between Central Point, to the north, and Ashland, to the south. The Greenway runs approximately 3 miles along the eastern fringe of Talent paralleling Interstate 5. The Greenway is a combination of parcels under state, county, City and easements where the land is privately owned. The Greenway is a valuable natural resource amenity to the City of Talent. It provides recreational opportunities as well as connectivity to other communities both north and south.

Other Facilities

Beeson-Foss Ranch

The Beeson-Foss Ranch, now known as the Meadow Brook Farm, is located just outside of the city limits, east of where Wagner Creek Road intersects with Beeson Lane. Settled in 1853 by John Beeson, this 24.4-acre historic property has operated as a farm for 145 years and is on the National Historic Register. Located on the site is a house, barn and peach shed. The current owners sell produce, plants, flowers and garden tools.

Inventory Table

Table B-2 displays a summary of all park and recreation facilities within the Talent Parks Planning Area.

Table B-2. Summary of Park and Recreation Facilities

	City-Owned Facilities												School District/Private Facilities				TOTALS
	Old Town Park	Chuck Roberts Park	Kamerin Springs Park	Lynn Newbry Park	Talent Commons	Bear Creek Greenway	Old Bridge Village Greenway	Wagner Park	Wagner Creek Greenway	Joseph Park	Whackers Hollow	DeYoung Property	Talent Elementary School	Talent Middle School	Talent Boys and Girls Club	Colver Road Fields	
Acres	0.96	12.34	0.21	2.46	1.00	19.19	0.22	0.76	1.53	0.28	5.15	13.89	6.10	8.20	N/A	25.80	98.09
Developed Acres	0.96	12.34	0.21	2.46	1.00	19.19	0.22						6.10	8.20			50.68
Undeveloped Acres								0.76	1.53	0.28	5.15	13.89				6.50	28.11
FACILITIES																	
Softball/Baseball Field		4														2	6
Basketball Court Full		1											1				2
Basketball Court Half		2	1											6	1		10
Soccer Field													1			2	3
Tennis Court		2															2
Horseshoe Court																	0
Running Track													1	1			2
Exercise Area				1													1
Skatepark	1																1
Gazebo			1					1									2
Bicycle Rack		1															1
Picnic Shelter	1	1	1	1													4
Picnic Tables		5		2													7
BBQ Grills	1	2															3
Drinking Fountain	1	1						1									3
Playground Area		1	1		1			1					1	1	1		7
Restroom	1	1			1												3
Trails	1			1			1		1			1					5
Fishing Accessible Shore				1					1	1		1					4
IMPROVEMENTS																	
Irrigation	1	1	1														3
Parking Lot Graveled		1		1													2
Parking Lot Paved					1												1

Source: CPW 2006

