

RAISING THE GRADE FARMWORKER HOUSING, MEDFORD, OREGON



SITE PLAN
SCALE: 1" = 40'

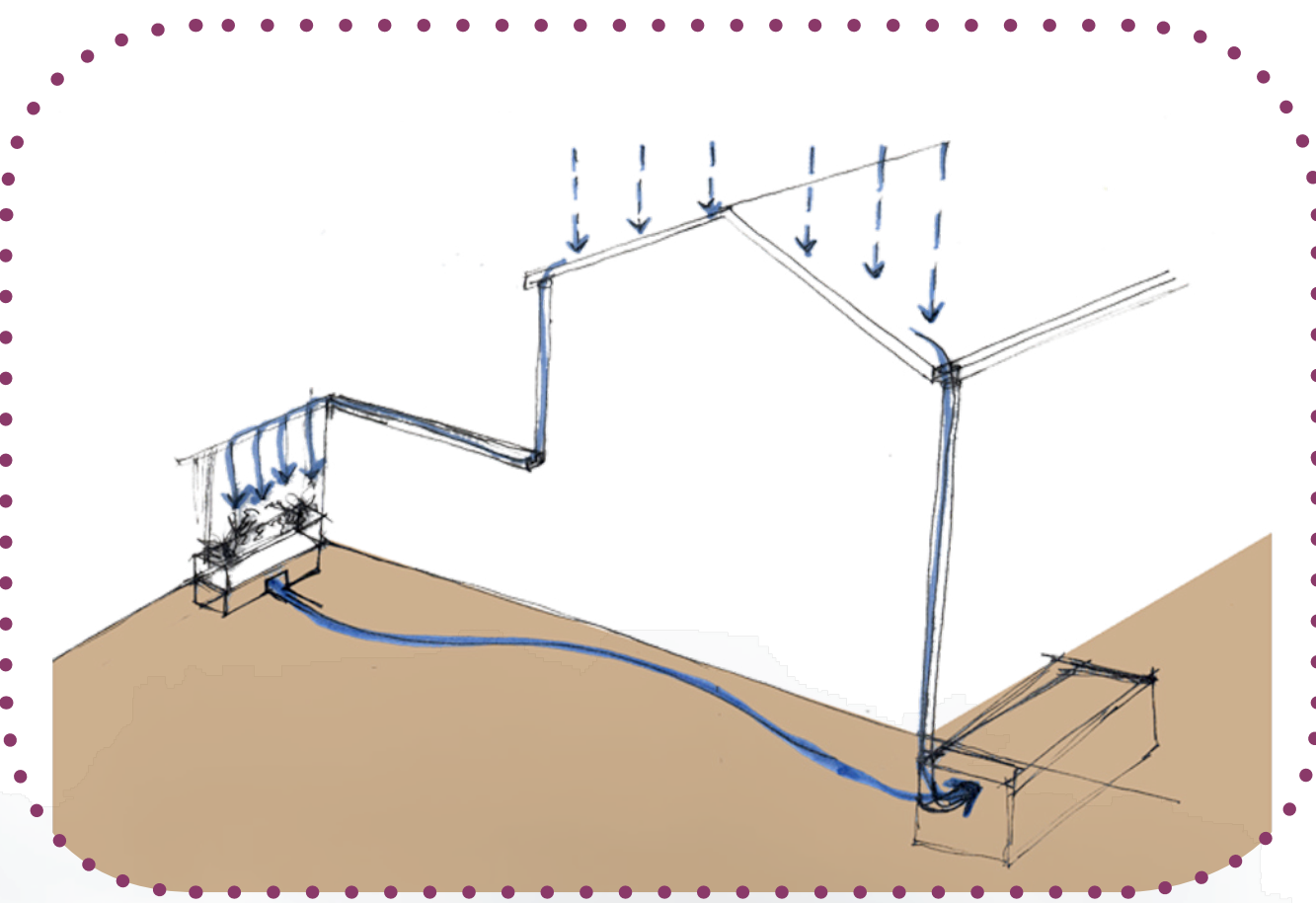
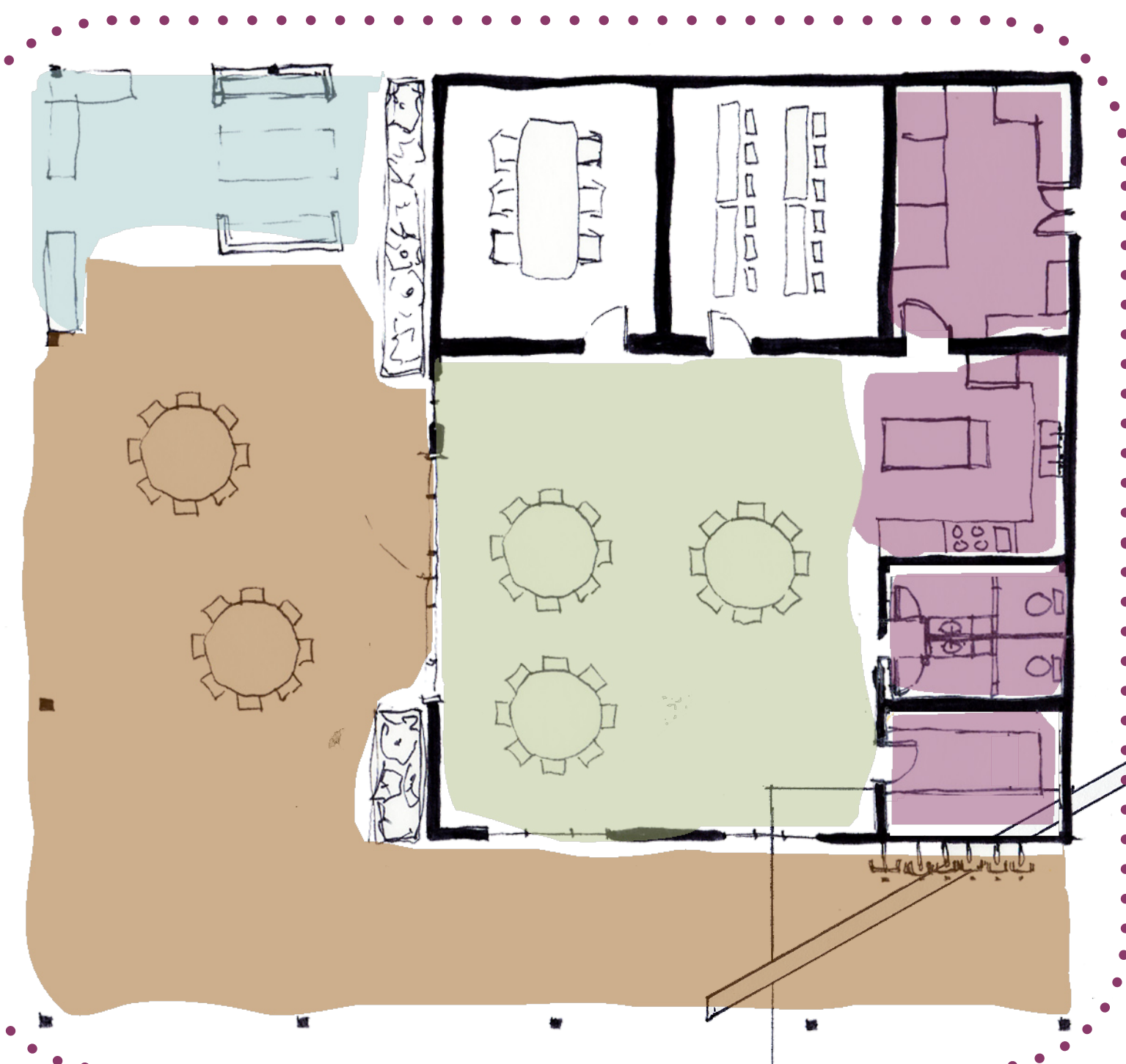
IDENTITY, COMMUNITY, AND AFFORDABILITY

For this project, we addressed three aspects of the farmworker community, *identity*, *community*, and *affordability*. Focusing on these, our goals were to:

- Create **thresholds and transitions** between levels of community
- Create **gathering space** for the internal community, as well as the external community, to come together
- Create a **prototype** that is **self empowering and self sustaining**, not only for the farmworkers but also the farm owners



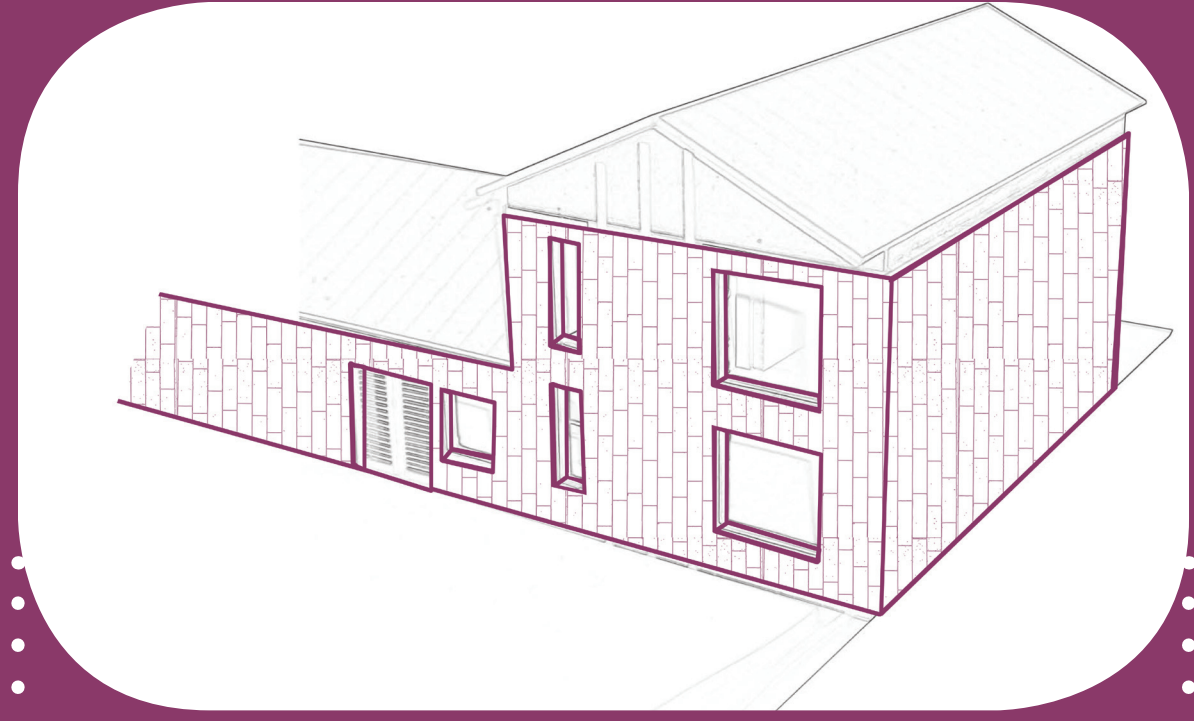
COMMUNITY CENTER



SITE SECTION A-A
SCALE: 1/4" = 1'

KIT OF PARTS

WALL SYSTEM



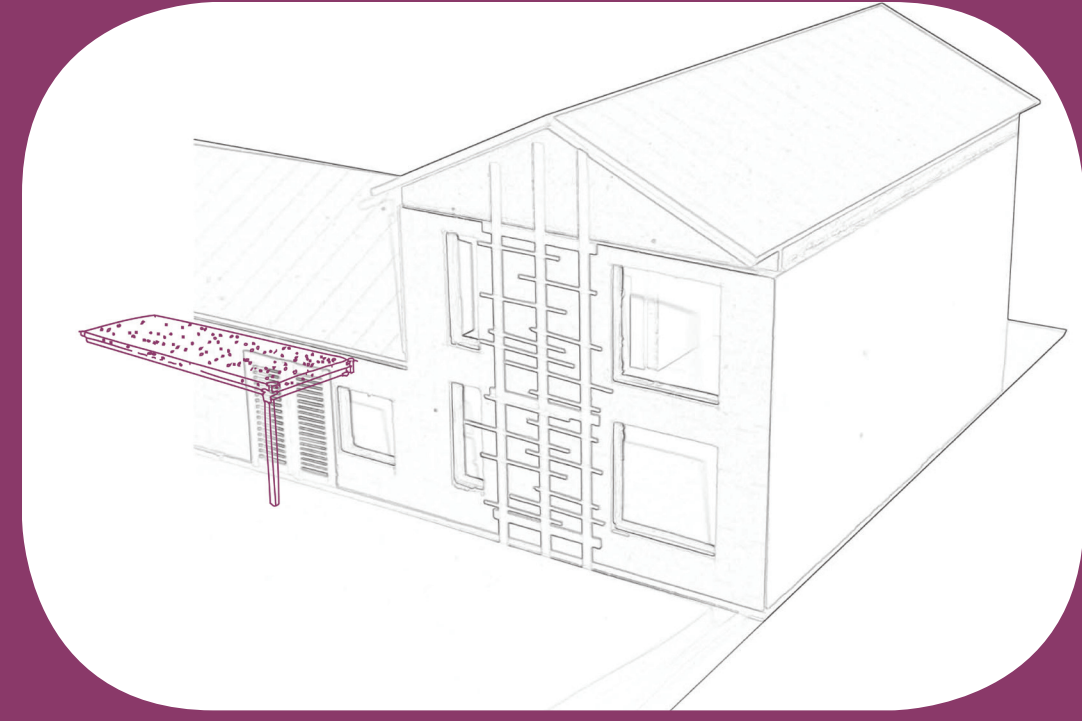
ROOF



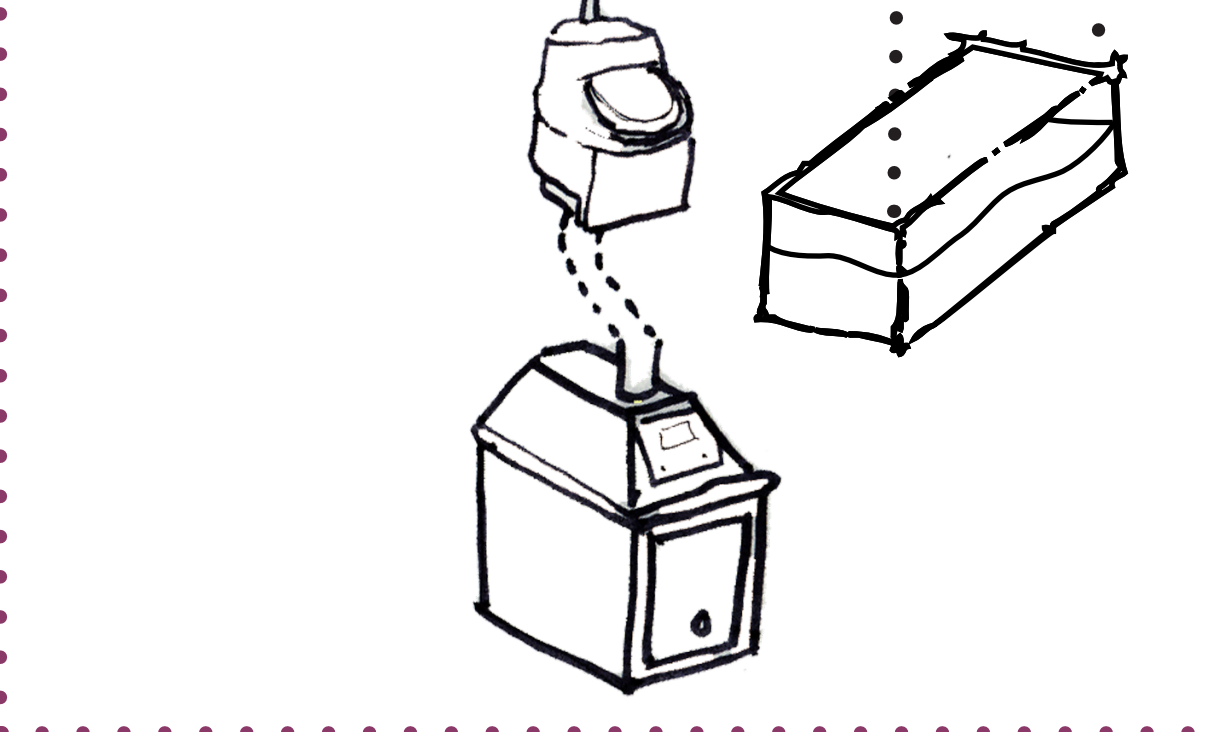
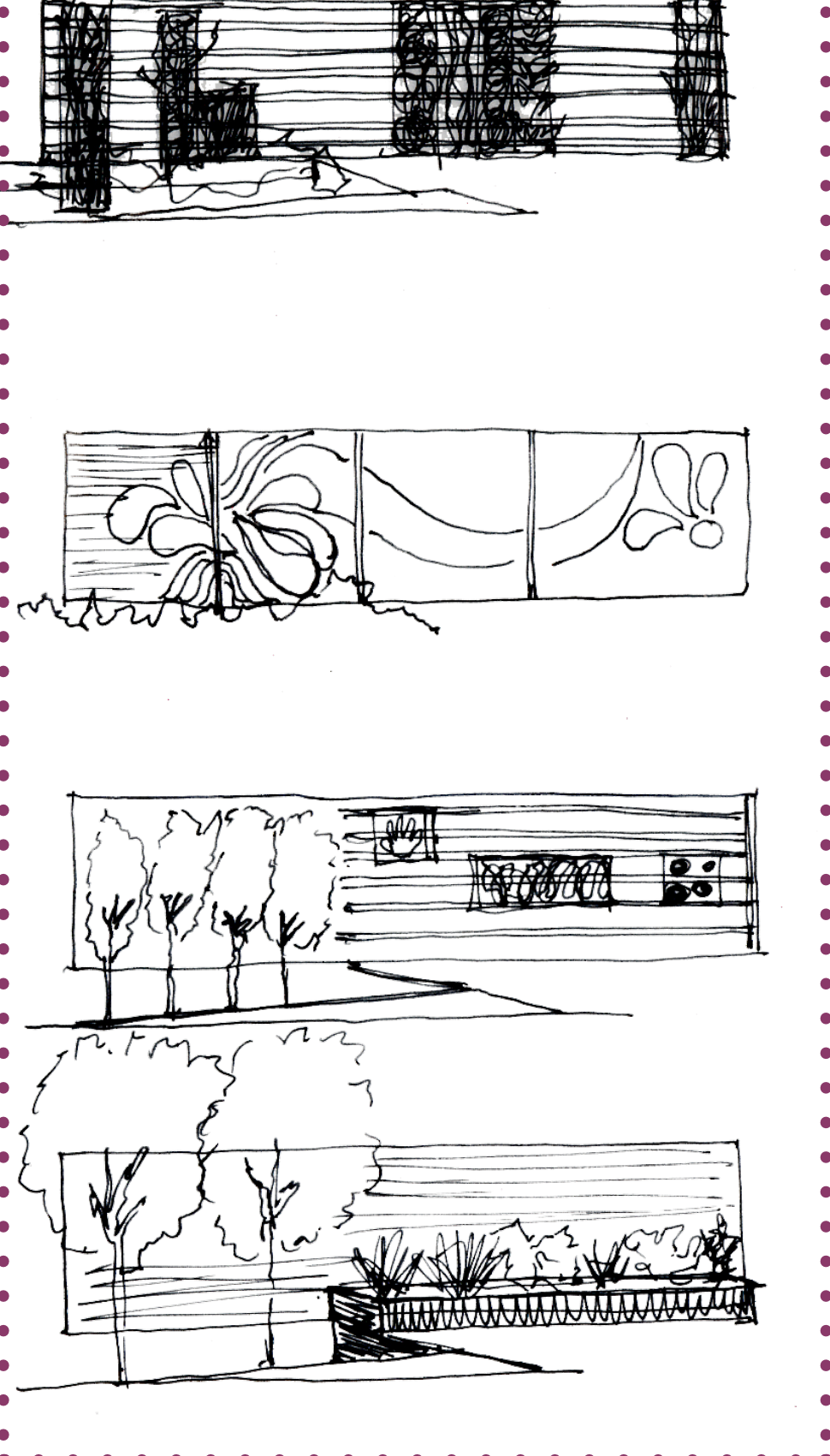
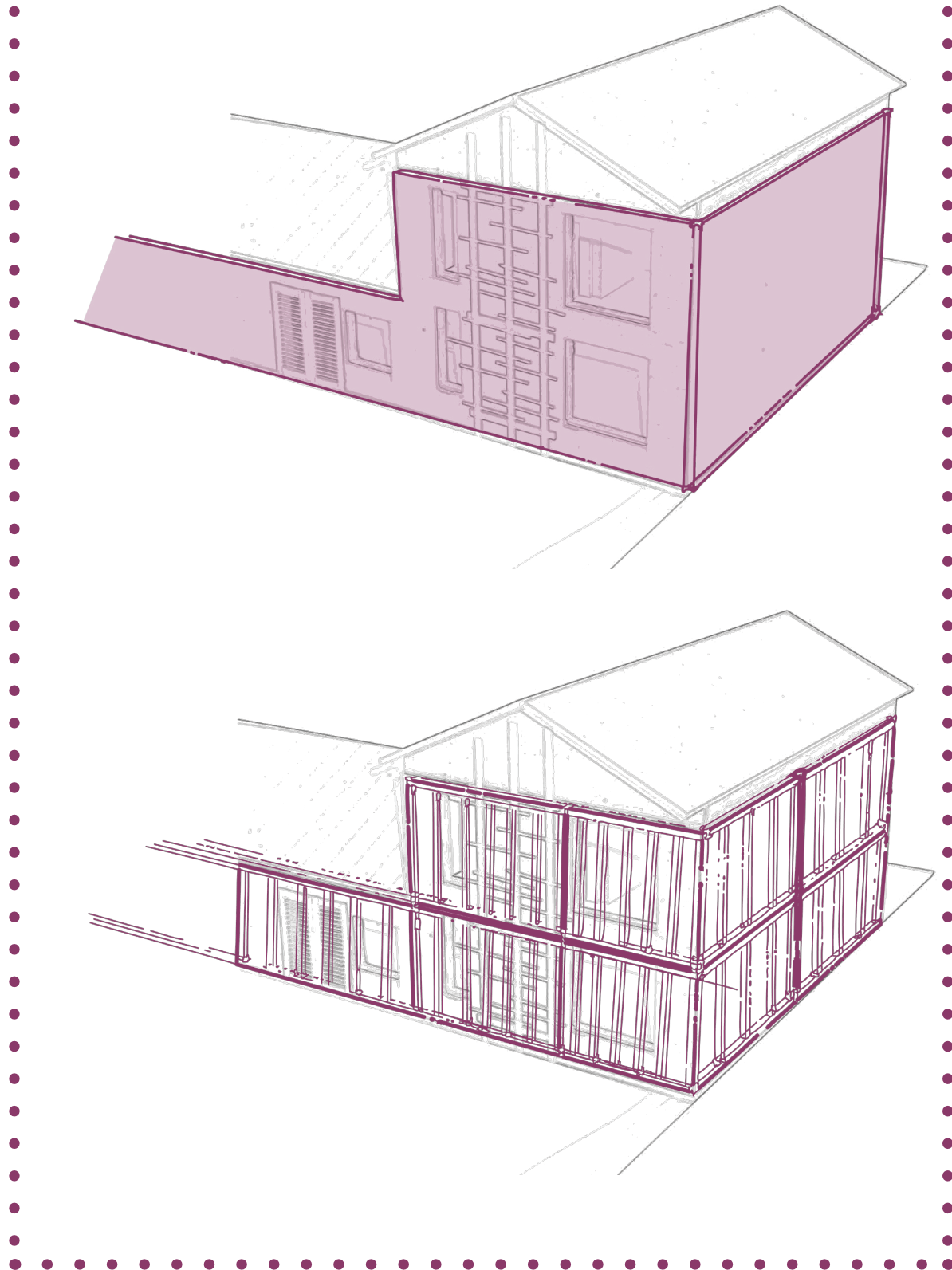
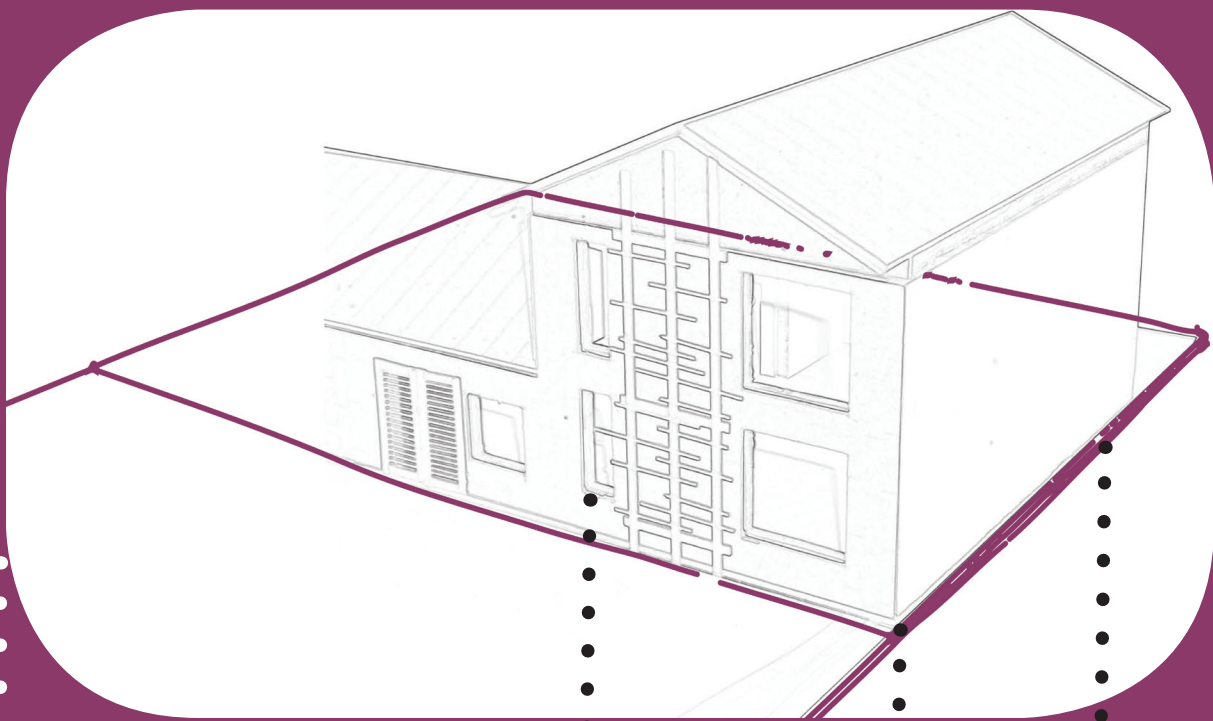
SCREENING SYSTEM



CANOPY



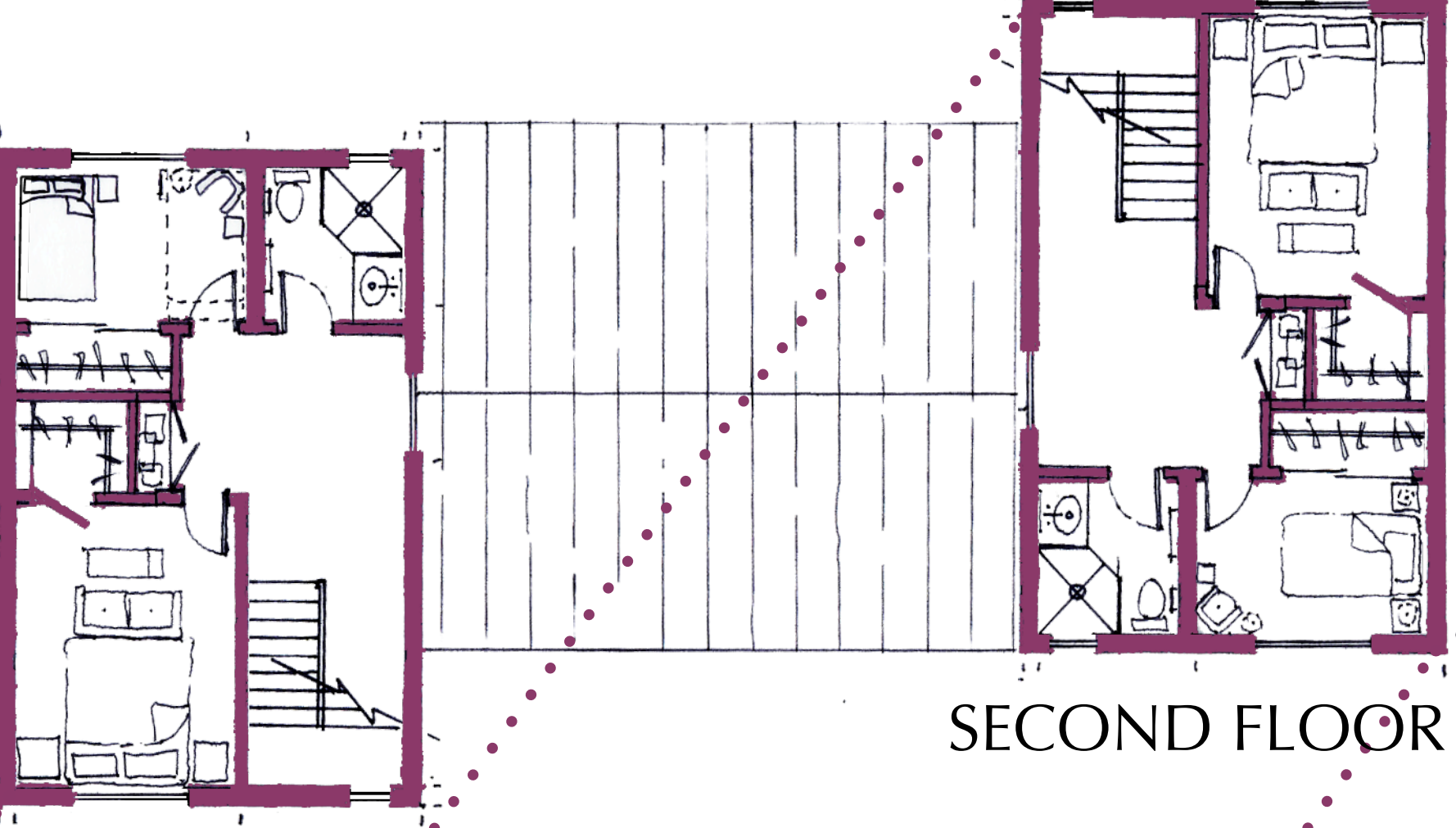
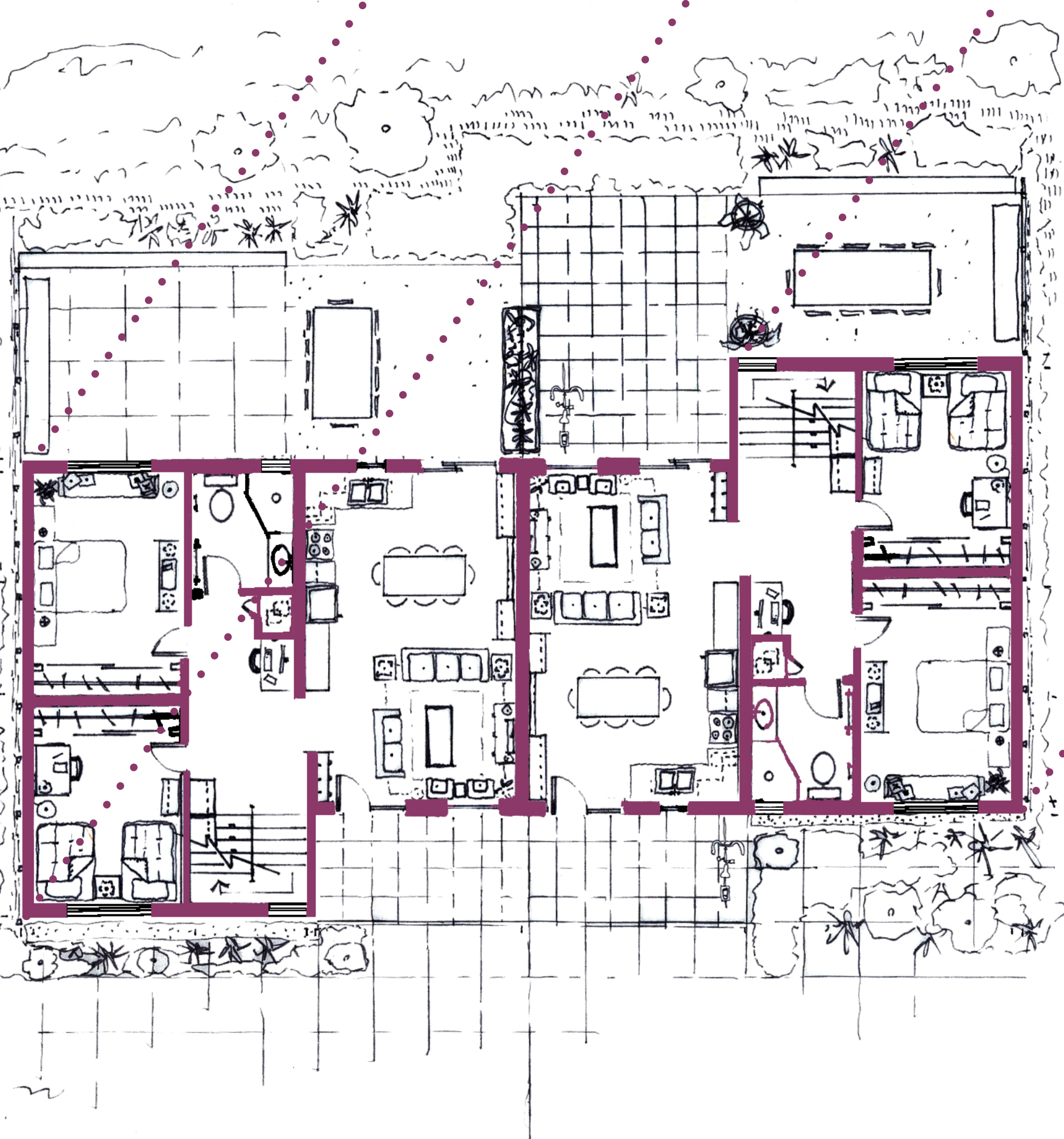
UNDERGROUND SYSTEMS



TWO STORY UNIT

GROUND FLOOR

SCALE: 1/8" = 1'



SECOND FLOOR



COURTYARD



APPROACH



GROUND FLOOR

SCALE: 1/8" = 1'

ONE STORY UNIT



INTERIOR

