



Oregon

Theodore R. Kulongoski, Governor

Department of Land Conservation and Development

635 Capitol Street, Suite 150

Salem, OR 97301-2540

(503) 373-0050

Fax (503) 378-5518

www.lcd.state.or.us



NOTICE OF ADOPTED AMENDMENT

11/29/2010

TO: Subscribers to Notice of Adopted Plan
or Land Use Regulation Amendments

FROM: Plan Amendment Program Specialist

SUBJECT: City of Medford Plan Amendment
DLCD File Number 016-10

The Department of Land Conservation and Development (DLCD) received the attached notice of adoption. Due to the size of amended material submitted, a complete copy has not been attached. A Copy of the adopted plan amendment is available for review at the DLCD office in Salem and the local government office.

Appeal Procedures*

DLCD ACKNOWLEDGMENT or DEADLINE TO APPEAL: Thursday, December 09, 2010

This amendment was submitted to DLCD for review prior to adoption pursuant to ORS 197.830(2)(b) only persons who participated in the local government proceedings leading to adoption of the amendment are eligible to appeal this decision to the Land Use Board of Appeals (LUBA).

If you wish to appeal, you must file a notice of intent to appeal with the Land Use Board of Appeals (LUBA) no later than 21 days from the date the decision was mailed to you by the local government. If you have questions, check with the local government to determine the appeal deadline. Copies of the notice of intent to appeal must be served upon the local government and others who received written notice of the final decision from the local government. The notice of intent to appeal must be served and filed in the form and manner prescribed by LUBA, (OAR Chapter 661, Division 10). Please call LUBA at 503-373-1265, if you have questions about appeal procedures.

*NOTE: The Acknowledgment or Appeal Deadline is based upon the date the decision was mailed by local government. A decision may have been mailed to you on a different date than it was mailed to DLCD. As a result, your appeal deadline may be earlier than the above date specified. NO LUBA Notification to the jurisdiction of an appeal by the deadline, this Plan Amendment is acknowledged.

Cc: Praline McCormack, City of Medford
Gloria Gardiner, DLCD Urban Planning Specialist
Ed Moore, DLCD Regional Representative
Amanda Punton, DLCD Regional Representative

<paa> YA



FORM **2**

DLCD

Notice of Adoption

In person electronic mailed

DEPT OF

NOV 22 2010

**LAND CONSERVATION
AND DEVELOPMENT**

For Office Use Only

This Form 2 must be mailed to DLCD within **5-Working Days after the Final Ordinance is signed** by the public Official Designated by the jurisdiction and all other requirements of ORS 197.615 and OAR 660-018-000

Jurisdiction: **City of Medford**

Local file number: **CP-10-001 & GLUP-10-002**

Date of Adoption: **11/4/10**

Date Mailed: 11/17/10

Was a Notice of Proposed Amendment (Form 1) mailed to DLCD? Yes No Date: 9/2/2010

Comprehensive Plan Text Amendment

Comprehensive Plan Map Amendment

Land Use Regulation Amendment

Zoning Map Amendment

New Land Use Regulation

Other:

Summarize the adopted amendment. Do not use technical terms. Do not write "See Attached".

Major Legislative Comprehensive Plan amendment to replace the Parks, Recreation, and Leisure Services section of the Public Facilities Element, amend the General Land Use Plan (GLUP) Map by adding new Parks and Schools designations, apply the Greenway designation to existing Riparian Corridors, and correct mapping errors by removing the Parks and Schools designation from several privately-owned parcels.

Does the Adoption differ from proposal? Yes, Please explain below:

Per DLCD email from Ed Moore dated September 3, 2010 and further consultation with Jackson County, City removed references in new Parks Element maps and text to future trails and parks outside of Medford's current UGB, except to note that Medford owns two parks outside the UGB and would like to pursue inclusion in the future. Also made a distinction between paved (urban) and unpaved (rural) trails.

Amended Implementation 2-C (4) to state "Increase access and public enjoyment of Prescott Park by developing appropriate facilities to enhance appreciation of natural resources, the outdoors, and Medford's unique environment. Until included within the Medford Urban Growth Boundary, improvements within Prescott Park must comply with Jackson County land use regulations, as well as state rules and statutes, which may limit the extent of improvements on land outside of UGBs."

Plan Map Changed from: **various**

to: **Parks and Schools**

Zone Map Changed from: **n/a**

to: **n/a**

Location: **various**

Acres Involved: **363**

Specify Density: Previous: **various**

New: **n/a**

Applicable statewide planning goals:

1 **2** **3** **4** **5** **6** **7** **8** **9** **10** **11** **12** **13** **14** **15** **16** **17** **18** **19**

Was an Exception Adopted? YES NO

Did DLCD receive a Notice of Proposed Amendment...

45-days prior to first evidentiary hearing?

Yes No

If no, do the statewide planning goals apply?

Yes No

DLCD File No. 016-10 (18423) [16422]

If no, did Emergency Circumstances require immediate adoption?

Yes No

DLCD file No. DLCD PAPA 016-10

Please list all affected State or Federal Agencies, Local Governments or Special Districts:

Jackson County Roads & Parks, Oregon State Parks & Recreation, Medford 549C School District, Phoenix-Talent School District, Oregon Department of Transportation, Medford Parks Commission, Bear Creek Greenway Foundation

Local Contact: **Praline McCormack, Planner II**

Phone: (541) 774-2380

Extension:

Address: **200 S. Ivy Street, Room 240**

Fax Number: **541-774-2564**

City: **Medford**

Zip: **97501**

E-mail Address: **praline.mccormack@cityofmedford.org**

ADOPTION SUBMITTAL REQUIREMENTS

This Form 2 must be received by DLCD no later than 5 days after the ordinance has been signed by the public official designated by the jurisdiction to sign the approved ordinance(s) per ORS 197.615 and OAR Chapter 660, Division 18

1. This Form 2 must be submitted by local jurisdictions only (not by applicant).
2. When submitting, please print this **Form 2** on light green paper if available.
3. Send this Form 2 and One (1) Complete Paper Copy and One (1) Electronic Digital CD (documents and maps) of the Adopted Amendment to the address in number 6:
4. **Electronic Submittals: Form 2 – Notice of Adoption will not be accepted via email or any electronic or digital format at this time.**
5. The Adopted Materials must include the final decision signed by the official designated by the jurisdiction. The Final Decision must include approved signed ordinance(s), finding(s), exhibit(s), and any map(s).
6. **DLCD Notice of Adoption must be submitted in One (1) Complete Paper Copy and One (1) Electronic Digital CD via United States Postal Service, Common Carrier or Hand Carried to the DLCD Salem Office and stamped with the incoming date stamp.** (for submittal instructions, also see # 5)] **MAIL the PAPER COPY and CD of the Adopted Amendment to:**

**ATTENTION: PLAN AMENDMENT SPECIALIST
DEPARTMENT OF LAND CONSERVATION AND DEVELOPMENT
635 CAPITOL STREET NE, SUITE 150
SALEM, OREGON 97301-2540**

7. Submittal of this Notice of Adoption must include the signed ordinance(s), finding(s), exhibit(s) and any other supplementary information (see ORS 197.615).
8. Deadline to appeals to LUBA is calculated **twenty-one (21) days** from the receipt (postmark date) of adoption (see ORS 197.830 to 197.845).
9. In addition to sending the Form 2 - Notice of Adoption to DLCD, please notify persons who participated in the local hearing and requested notice of the final decision at the same time the adoption packet is mailed to DLCD (see ORS 197.615).
10. **Need More Copies?** You can now access these forms online at <http://www.lcd.state.or.us/>. You may also call the DLCD Office at (503) 373-0050; or Fax your request to: (503) 378-5518.

Updated December 22, 2009

ORDINANCE NO. 2010-240

AN ORDINANCE approving a major amendment to the *Public Facilities* element of the *Medford Comprehensive Plan* by replacing the current Parks section planning period for 2010 to 2030; amending the General Land Use Plan Map by the designation of specific parcels to “Parks and Schools”; applying the “Greenway” designation to existing Riparian Corridors; and removing the “Parks and Schools” designation from several privately-owned parcels.

THE CITY OF MEDFORD ORDAINS AS FOLLOWS:

Section 1. A major amendment to the *Public Facilities* element of the *Medford Comprehensive Plan* by replacing the current Parks section to cover the planning period 2010 to 2030; amending the General Land Use Plan Map by changing the designation of specific parcels to “Parks and Schools”; applying the “Greenway” designation to existing Riparian Corridors; and correcting mapping errors by removing the “Parks and Schools” designation from several privately-owned parcels, is hereby approved and adopted.

Section 2. This major amendment to the *Medford Comprehensive Plan* is supported by the Findings of Fact and Conclusions of Law contained in the Staff Report dated October 18, 2010, attached as Exhibit A and incorporated herein.

Section 3. The effective date of this major amendment shall be December 6, 2010.

PASSED by the Council and signed by me in authentication of its passage this 4 day of November, 2010.

ATTEST: /s/Glenda Wilson
 City Recorder

/s/Gary H. Wheeler
 Mayor

APPROVED November 4, 2010.

/s/Gary H. Wheeler
 Mayor



CITY OF MEDFORD

PLANNING DEPARTMENT

STAFF REPORT

Date: October 18, 2010

To: Medford City Council

Reviewed By: Suzanne Myers, *SM* A.I.C.P., Principal Planner

By: Praline McCormack, Planner II

Subject: Parks Element Comp. Plan Amendments (CP-10-001 and GLUP-10-002)
City of Medford, Applicant

DESCRIPTION

Consideration of a Class 'A' Major Legislative Comprehensive Plan Amendment proposal to update the Parks, Recreation and Leisure Services section of the Public Facilities Element, amend the General Land Use Plan (GLUP) Map by changing the designation of specific parcels to "Parks and Schools", apply the "Greenway" designation to existing Riparian Corridors, and correct mapping errors by removing the "Parks and Schools" designation from several privately-owned parcels.

PROPOSAL

The purpose of the Parks, Recreation and Leisure Services section of the Public Facilities Element (hereinafter called "Parks Element") is to describe characteristics of the existing park system, project the need for parks in Medford for the 20-year period between 2010 and 2030 based upon research and analysis of public wants and funding ability, and provide the City with Goals and Policies based on Conclusions derived from the analysis of existing conditions and future needs, as well as Strategies to implement those policies.

For convenience, the draft Parks Element is attached as Exhibit A (which also includes the proposed GLUP Map amendments).

BACKGROUND

The Public Facilities Element is a chapter of the Comprehensive Plan. Public facilities and services are divided into two categories. Category "A" facilities include water, sanitary sewer and treatment, storm drainage, and transportation facilities. These are the minimum key physical facilities necessary for urban development, and those for which specific documentation is required by state rules.

Category "B" facilities include fire protection, law enforcement, **parks and recreation**, solid waste management, schools, and health services. These facilities and services enhance and protect development within the City and are provided in response to development that occurs.

PROPOSED PARKS ELEMENT

The last update to the Public Facilities Element related to Parks was in 1997. The proposed update to the Parks Element is based on a 2006 document, the *Medford Parks, Recreation and Leisure Services Plan*. The 2006 Parks Plan was approved by the Parks Commission on June 20, 2006.

Written by both City Planning and Parks staff, the Parks Element is intended to present a Public Facilities Element section that includes information from the 2006 Parks Plan as well as up-to-date information since the 2006 Parks Plan was prepared. The first sections of the Parks Element provide an introduction and a discussion about state parks planning laws. The remainder of the Parks Element presents Conclusions, as well as proposed Goals, Policies and Implementation Strategies based on those Conclusions, that will guide City policy and decision-making related to parks and recreation over the 20-year period from 2010 to 2030.

In addition, the Parks Element provides:

- A needs assessment of parks and recreation facilities, which included citizen involvement;
- An inventory of existing park facilities and functions;
- A determination of park land and facility needs;
- A funding plan;
- Guidelines for site selection and development of parks; and
- Maps of existing park resources, trails plan, and facilities plan.

PROPOSED GLUP MAP AMENDMENTS

This proposal also includes several amendments to the General Land Use Plan (GLUP) Map. The GLUP Map graphically represents the present and future land use patterns within the Medford Urban Growth Boundary (UGB). "Parks and Schools" and "Greenways" are two of 13 land use designations on the GLUP Map.

1. The first proposed GLUP Map amendment changes the designation of specific parcels to "Parks and Schools".
2. The second GLUP Map amendment applies the "Greenway" designation to existing Riparian Corridors, namely Bear Creek, Larson Creek, and Lone Pine Creek downstream of Biddle Road. This will not add any new regulations, but display the currently existing Riparian Corridors on the GLUP Map.
3. The last GLUP Map amendment corrects mapping errors by removing the "Parks and Schools" designation from several privately-owned parcels.

PROCEDURES TO DATE

- 2004 – The Parks Department began development of the 2006 Parks Plan with a community workshop, sports group questionnaire, and citywide recreation survey. A Steering Committee and the Medford Parks and Recreation Commission provided direction.
- June 2, 2005 – The City Council adopted Resolution 2005-95 initiating the process to update the Comprehensive Plan with the new Parks, Recreation, and Leisure Services Plan.
- June 20, 2006 - The Parks and Recreation Commission voted to approve the 2006 Parks and Leisure Service Plan and forward it to the Planning Department for updating of the Comprehensive Plan.
- May 10, 2010 - The Planning Commission discussed the draft Parks Element, written by both Planning and Parks staff, at a study session.
- May 18, 2010 - The Parks and Recreation Commission voted to approve the draft Parks Element with some changes.
- July 21, 2010 – A Request for Comment was sent to affected agencies and interested parties, including the Oregon Department of Land Conservation and Development (DLCD) and Jackson County, and was posted on the Planning Department website. One comment was received (Exhibit B).
- August 23, 2010 - The Planning Commission discussed the proposed GLUP Map amendments at a study session.
- September 9, 2010 – After a public hearing, the Planning Commission voted to forward a favorable recommendation to City Council (Exhibit C).
- September 14, 2010 – The Citizens' Planning Advisory Committee voted to recommend approval.
- November 4, 2010 - City Council public hearing.

ISSUES/ANALYSIS

GLUP Map Amendment #1 – Add new Parks and Schools to Map

The list of parcels to receive the “Parks and Schools” GLUP Map designation is included in Exhibit A. These publicly-owned parcels currently have school and/or park facilities in use, but have not been designated “Parks and Schools” for one of two reasons. First, they were not designated due to mapping errors associated with old mapping techniques. Or, two, they are newer facilities. This designation has not been updated in at least fifteen years. The list includes the current GLUP designation proposed to be changed.

GLUP Map Amendment #2 – Apply “Greenway” Designation to Existing Riparian Corridors

The “Greenway” GLUP designation is proposed to be applied to the City's currently adopted Riparian Corridors, namely Bear Creek, Larson Creek, and the portion of Lone Pine Creek downstream from Biddle Road. The purpose for applying the designation is to graphically display the location of the Riparian Corridors on Medford's General Land Use Plan Map. There will be no change to the underlying regulations because these are already in place for designated Riparian Corridors. The “Greenways” are subject to the

Riparian Corridor standards in Medford Land Development Code Sections 10.920 – 10.928, except that Greenways in the Southeast Area are also subject to S-E Overlay Section 10.384.

GLUP Map Amendment #3 – Correct Mapping Errors by Removing “Parks and Schools” Designation from Several Privately-Owned Parcels

Below is a list of seven privately-owned parcels that, due to mapping errors associated with old mapping techniques, currently have the “Parks and Schools” GLUP designation. The GLUP designation is proposed to be corrected to the appropriate GLUP designation based upon the parcel’s current zoning, as well as abutting GLUP designations. The list includes the current zoning, as well as the proposed GLUP designation.

| MAP ID | MAP LOT | OWNER | ACRES | CURRENT ZONING | CURRENT GLUP | PROPOSED GLUP |
|--------|--------------|--------------------------|-------------|----------------|--------------|---------------|
| 1 | 371W30CA9300 | ARTHUR WEBSTER | 0.8 | MFR-20 | PS | UH |
| 2 | 372W12D8500 | CEARLEY ENTERPRISES INC. | 6.0 | I-L | PS | GI |
| 3 | 372W12D8604 | CEARLEY ENTERPRISES INC. | 4.5 | I-L | PS | GI |
| 4 | 372W13AA100 | GERALD/SHARON WESTON | 5.8 | I-G | PS | GI |
| 5 | 372W13AA200 | CEARLEY ENTERPRISES INC. | 1.1 | I-G | PS | GI |
| 6 | 372W13AA204 | REBECCA DEBOER | 1.4 | I-L | PS | GI |
| 7 | 372W13AA300 | CEARLEY ENTERPRISES INC. | 10.3 | I-L | PS | GI |
| | | TOTAL ACRES | 29.9 | | | |

Note: MFR-20 (Multi-Family Residential Zoning District, 20 units per acre), I-L (Light Industrial Zoning District), I-G (General Industrial Zoning District), PS (Parks and Schools GLUP Designation), UH (Urban High Density Residential GLUP Designation), GI (General Industrial GLUP Designation)

COMMENTS RECEIVED

Just prior to the Planning Commission hearing, an email from DLCD dated September 3, 2010 (Exhibit B) was received. DLCD expressed concerns that the Parks Element included proposed trails and parks located outside of Medford’s UGB. DLCD noted that Jackson County would have to co-adopt such plans due to Oregon Statewide Planning Goal 2, which states that “each plan and related implementation measures shall be coordinated with the plans of affected government units.” DLCD also noted that parks to serve an urban population must be provided within Medford’s UGB to be consistent with Statewide Planning Goal 14.

City staff and Jackson County staff met to discuss these comments. Since it would take Jackson County several years to amend their Comprehensive Plan to include Medford's proposed trails and parks outside the UGB, the proposed Parks Element, including related Figures, has been revised to remove references to proposed trails and parks located outside of Medford's UGB, making the proposal compliant with Statewide Planning Goals 2 and 14.

APPROVAL CRITERIA

For Class 'A' Major Legislative Comprehensive Plan Amendments, approval criteria are found in:

- Medford Land Development Code Section 10.184, Class "A" Amendment Criteria
- Medford Comprehensive Plan, Review and Amendment Section

Other Oregon planning policies that govern parks planning:

- Statewide Planning Goal 8 – Recreational Needs
- Oregon Administrative Rule (OAR) 660 Division 34 – State and Local Park Planning

FINDINGS OF COMPLIANCE WITH APPROVAL CRITERIA

Medford Land Development Code Section 10.184

This section identifies the approval criteria for Class "A" Amendments. For Comprehensive Plan Amendments, this section refers one to the Review and Amendment section of the Comprehensive Plan.

Review and Amendments Section

The proposed amendments are Class "A" Major amendments because they involve the complete update of Conclusions, Goals, Policies, and Implementation Strategies contained within the Parks section of the Public Facilities Element. The amendments are Major amendments because they involve citywide parks and recreation resources, and include citywide changes to the General Land Use Plan Map.

Therefore, the following criteria from the Review and Amendment Section of the Comprehensive Plan must be considered when evaluating the proposal:

1. A change or addition to the text, data, inventories, or graphics which substantially affects the nature of one or more Conclusions.
2. A significant change in one or more Conclusion, Goal, Policy or Implementation Strategy.
3. Information reflecting new or previously undisclosed public needs.
4. A significant change in community attitude or priorities.
5. Demonstrable inconsistency with another Plan provision.
6. Statutory changes affecting the Plan.
7. All applicable Statewide Planning Goals.
8. Availability of new and better strategies such as may result from technological or economic changes.

9. Demonstrable ineffectiveness of present strategy(s).
10. Demonstrable budgetary constraints in association with at least one of the above criteria.
11. Demonstrated need for the change to accommodate unpredicted population trends, to satisfy urban housing needs, or to assure adequate employment opportunities.
12. The orderly and economic provision of key public facilities.
13. Maximum efficiency of land uses within the current urbanizable area.
14. Environmental, energy, economic and social consequences.
15. Compatibility of the proposed change with other elements of the Comprehensive Plan.

Criterion #1 – A change or addition to the text, data, inventories, or graphics which substantially affects the nature of one or more Conclusions.

This criterion has been met.

The text, data, inventories, and graphics of the Parks section of the Public Facilities Element have been updated and supplemented, which has led to the formulation of new Conclusions about parks and recreational needs in Medford.

Criterion #2 – A significant change in one or more Conclusion, Goal, Policy or Implementation Strategy.

This criterion has been met.

New and revised Conclusions about parks and recreational needs in Medford have led to the development of new and revised Goals, Policies and Implementation Strategies.

Criterion #3 - Information reflecting new or previously undisclosed public needs.

This criterion has been met.

Parks and recreational needs in Medford were assessed, and this update to the Parks section of the Public Facilities Element reflects newly identified or previously undisclosed public parks and recreation needs.

Criterion #4 - A significant change in community attitude or priorities.

This criterion has been met.

Community priorities were assessed and included in this update.

Criterion #5 - Demonstrable inconsistency with another Plan provision.

This criterion is not applicable to the proposed amendments.

No inconsistencies with other Comprehensive Plan policies were identified.

Criterion #6 - Statutory changes affecting the Plan.

This criterion is not applicable to the proposed amendments.

There are no new statutory changes affecting this update of the Parks section of the Public Facilities Element.

Criterion #7 – All Applicable Statewide Planning Goals

This criterion has been met.

Upon investigation, it was determined that Statewide Planning Goals 1, 2, 8 and 11 apply to the proposed amendment.

GOAL 1: CITIZEN INVOLVEMENT - To develop a citizen involvement program that insures the opportunity for citizens to be involved in all phases of the planning process.

The City of Medford has an established citizen involvement program consistent with Goal 1 that includes review of proposed legislative Comprehensive Plan amendments by the Citizens' Planning Advisory Committee, the Planning Commission, and the City Council in study sessions, regular meetings, and public hearings. Affected agencies and interested persons are also invited to review and comment on such proposals, and meeting and hearing notices are published in the local newspaper. This process has been adhered to in the development of the amendment.

The draft document was made available for review by the public (via the internet), the media, affected agencies, departments, and interested persons. The Citizens' Planning Advisory Committee reviewed the amendment at a regular meeting on September 14, 2010, and voted to recommend approval. The Planning Commission reviewed the amendment at an appropriately noticed public hearing on September 9, 2010 and made a recommendation for adoption to the City Council. The City Council conducted an appropriately noticed legislative public hearing on November 4, 2010. The citizen involvement process followed for this amendment is consistent with Statewide Planning Goal 1.

GOAL 2: LAND USE PLANNING – To establish a land use planning process and policy framework as a basis for all decisions and actions related to use of land and to assure an adequate factual base for such decisions and actions.

The City of Medford has followed the procedural requirements for Major Comprehensive Plan Amendments contained in Medford Land Development Code Sections 10.100 - 10.176 and 10.180 - 10.184, and the approval criteria for Comprehensive Plan Amendments contained in the "Review and Amendment" section of the Comprehensive Plan. These requirements comply with the requirements of the state statutes and rules. The process has included newspaper notices, request for comments from affected agencies, disclosure of facts, staff reports, public hearings, and findings. These items are included in the record of this land use action. The decision-making process used by the City of Medford is consistent with the acknowledged Land Development Code, Comprehensive Plan, and Statewide Planning Goal 2.

GOAL 8: RECREATIONAL NEEDS - To satisfy the recreational needs of the citizens of the state and visitors and, where appropriate, to provide for the siting of necessary recreational facilities including destination resorts.

Compliance with Administrative Rules for Statewide Planning Goal 8

Upon investigation, it has been determined that Oregon Administrative Rule 660, Division 34 – State and Local Park Planning - applies to the proposed amendment.

OAR 660-034-0040 – Planning for Local Parks

- (1) *Local park providers may prepare local park master plans, and local governments may amend acknowledged comprehensive plans and zoning ordinances pursuant to the requirements and procedures of ORS 197.610 to 197.625 in order to implement such local park plans. Local governments are not required to adopt a local park master plan in order to approve a land use decision allowing parks or park uses on agricultural lands under provisions of ORS 215.213 or 215.283 or on forestlands under provisions of OAR 660-006-0025(4), as further addressed in sections (3) and (4) of this rule. If a local government decides to adopt a local park plan as part of the local comprehensive plan, the adoption shall include:*
 - (a) *A plan map designation, as necessary, to indicate the location and boundaries of the local park; and*
 - (b) *Appropriate zoning categories and map designations (a "local park" zone or overlay zone is recommended), including objective land use and siting review criteria, in order to authorize the existing and planned park uses described in local park master plan.*
- (2) *Unless the context requires otherwise, this rule does not require changes to:*
 - (a) *Local park plans that were adopted as part of an acknowledged local land use plan prior to July 15, 1998; or*
 - (b) *Lawful uses in existence within local parks on July 15, 1998.*
- (3) *All uses allowed under Statewide Planning Goal 3 are allowed on agricultural land within a local park and all uses allowed under Statewide Planning Goal 4 are allowed on forest land within a local park, in accordance with applicable laws, statewide goals, and rules.*
- (4) *Although some of the uses listed in OAR 660-034-0035(2)(a) to (g) are not allowed on agricultural or forest land without an exception to Goal 3 or Goal 4, a local government is not required to take an exception to Goals 3 or 4 to allow such uses on land within a local park provided such uses, alone or in combination, meet all other statewide goals and are described and authorized in a local park master plan that:*
 - (a) *Is adopted as part of the local comprehensive plan in conformance with Section (1) of this rule and consistent with all statewide goals;*
 - (b) *Is prepared and adopted applying criteria comparable to those required for uses in state parks under OAR chapter 736, division 18; and*
 - (c) *Includes findings demonstrating compliance with ORS 215.296 for all uses and activities proposed on or adjacent to land zoned for farm or forest use.*

The City of Medford complies with ORS 660-034-0040(1)(a) and (b) through implementation of the General Land Use Plan "Parks and Schools" designation, which depicts existing public parks and schools. There is no specific zoning district associated with this designation. Instead, parks and schools are permitted as a conditional use in all residential, commercial, and light industrial zones. The City intends to further pursue the development of objective land use and siting review criteria.

The purpose of this update to the Parks section of the Public Facilities Element is to plan for the parks and recreational needs of Medford's citizens for the next 20 years, to 2030. The proposed amendment is consistent with Statewide Planning Goal 8.

GOAL 11: PUBLIC FACILITIES AND SERVICES: To plan and develop a timely, orderly and efficient arrangement of public facilities and services to serve as a framework for urban and rural development.

Included within the broad spectrum of public facilities and services are park and recreation facilities and services. The proposed amendments will adopt an updated Parks Element into the Comprehensive Plan and update the General Land Use Plan Map to accurately depict existing Parks and Schools facilities. The proposed adoption of these park-related plans into the Comprehensive Plan and General Land Use Plan Map are consistent with Goal 11 in that the plans contain an inventory of existing facilities and a list of anticipated projects that would result in public facilities being created in support of this goal, as well as planned and realistic means to fund such facilities.

Criterion #8 - Availability of new and better strategies such as may result from technological or economic changes.

This criterion has been met.

Proposed funding strategies for capacity-increasing parks and facilities development is based upon a new strategy called an "improvements-driven" approach that identifies projects needed to address growth needs. Once staff identified needed parks and facilities projects, the "wish list" was scaled down to a fiscally-constrained list which results in Parks System Development Charges (SDCs) deemed to be reasonable.

Criterion #9 - Demonstrable ineffectiveness of present strategy(s).

This criterion has been met.

All of the Implementation Strategies have been updated, but not because all of the present strategies are ineffective. See the finding for Criterion #8.

Criterion #10 - Demonstrable budgetary constraints in association with at least one of the above criteria.

This criterion has been met.

Public needs and priorities were identified for this update. The resultant list of projects was then scaled down to address budgetary constraints. See the finding for Criterion #8.

Criterion #11 - Demonstrated need for the change to accommodate unpredicted population trends, to satisfy urban housing needs, or to assure adequate employment opportunities.

This criterion has been met.

Provisions in Medford Municipal Code 3.890 require City review of the SDC Methodology Report no later than every five years to ensure funding accurately contemplates the most current trends in population growth, community needs and changing construction costs.

Criterion #12 - The orderly and economic provision of key public facilities.

This criterion has been met.

The "improvements-driven" approach is based on a specific list of planned capacity-increasing capital improvements. The portion of each project that is attributable to growth is determined, and the SDC-eligible costs are calculated by dividing the total costs of growth-required projects by the projected increase in population and employment, as applicable. This approach is derived from a needs assessment with substantial public input and a project list that is apportioned between growth and current users.

Criterion #13 - Maximum efficiency of land uses within the current urbanizable area.

This criterion is not applicable to the proposed amendments.

Criterion #14 - Environmental, energy, economic and social consequences.

This criterion has been met.

New park development applications must successfully demonstrate that adverse impacts, including environmental and social consequences, if any, have been adequately addressed through public input into the City's planning process prior to development. The planning process most often used is the City's Conditional Use Permit process, which balances adverse impacts with public benefit, and utilizes mitigation measures.

Social consequences have been considered in the development of standards for Neighborhood and Community Parks where facilities that generate noise or include sports' night lighting, as an example, are reserved for larger park sites where social impacts can be buffered or mitigated. The Parks and Recreation Department conducts a master planning process which must uphold these standards for each park being planned for development.

Criterion #15 - Compatibility of the proposed change with other elements of the Comprehensive Plan.

This criterion has been met.

The Medford Comprehensive Plan has been reviewed for compatibility with this proposal and no conflicts were identified.

CONCLUSION

The City Council can find that the applicable criteria have been met as per this Staff Report, including the facts, evidence, comments, and noted compliance with the Review and Amendment criteria addressed herein.

RECOMMENDED ACTION

The Medford Planning Commission, at their meeting of September 9, 2010, voted to forward a favorable recommendation for CP-10-001 and GLUP-10-002 per the Staff Report dated August 31, 2010, including Exhibits A through C.

Staff requests that the ordinance adopting CP-10-001 and GLUP-10-002 become effective 30 days from the date of approval to allow time for producing the final documents and maps as adopted.

SUGGESTED MOTION

Adopt Ordinance 2010 - ____ amending the Medford Comprehensive Plan, Public Facilities Element, by replacing the current Parks section with an updated Parks section covering the planning period 2010 to 2030; amending the General Land Use Plan Map by changing the designation of specific parcels to "Parks and Schools"; applying the Greenway designation to existing Riparian Corridors; and correcting mapping errors by removing the "Parks and Schools" designation from several privately-owned parcels, per

the Staff Report dated October 18, 2010, including Exhibits A through C. Ordinance 2010 - _____ to become effective in 30 days.

EXHIBITS

Exhibit A - Draft Parks Element dated October 15, 2010, including:

Figure 1: Existing Park and Recreation Resources

Figure 2: Trails Plan

Figure 3: Facilities Plan

Map and Table: Parks & Schools GLUP Map Amendment, Proposed Tax
Lots Addition to Parks & Schools GLUP

Map and Table: Parks & Schools GLUP Map Amendment, Proposed Tax
Lots Removed from Parks & Schools GLUP

Exhibit B - Email from Ed Moore, DLCD, dated September 3, 2010

Exhibit C - Excerpt of minutes from Planning Commission hearing of September 9, 2010

***Note:** The current Parks Element, the proposed Parks Element Update, and the 2006 Parks, Recreation, and Leisure Services Plan can be accessed on the Planning Department page of the City of Medford website www.ci.medford.or.us.*

PLANNING COMMISSION AGENDA:
CITY COUNCIL AGENDA:

September 9, 2010
November 4, 2010

PUBLIC FACILITIES ELEMENT

PARKS, RECREATION, AND LEISURE SERVICES

The Parks, Recreation, and Leisure Services section of the Public Facilities Element (hereinafter called "Parks Element") is a component of the City of Medford *Comprehensive Plan*.

This section is intended to comply with statewide planning policies and requirements that govern recreational planning, including Goal 8 (Recreational Needs), and OAR 660 Division 34. The primary purpose of this section is to (1) describe characteristics of the existing park system, (2) project the need for parks in Medford for the 20-year period between 2010 and 2030 based upon research and analysis of public wants and funding ability, and (3) provide the City with Goals and Policies based on Conclusions derived from the analysis of existing conditions and future needs as well as Strategies to implement those policies.

INTRODUCTION

Medford is the largest city in Southern Oregon and a regional provider of park and recreation services. Rapid population growth has increased the demand for parks, recreation facilities, and programs community-wide, and the City has developed this new plan to address existing financial challenges while expanding recreation opportunities and maintaining existing resources.

In the past, the City has shown vision in acquiring and developing park and recreation facilities to meet community needs. Facilities such as numerous sports fields, U.S. Cellular Community Park, the Bear Creek Greenway and Bear Creek Park have become great community assets, attracting residents from all parts of Jackson County. In addition, through a cooperative effort with the Medford School District, the City has developed one of the best neighborhood school/park systems in the Northwest. However, a funding deficit has created problems in maintaining many park sites, and some parks are underdeveloped. Moreover, the City continues to utilize outdated facilities, such as Hawthorne and Jackson pools, which accrue operations costs that are not offset due to lower than typical user fees. Past levels of recreation programming and community participation in City programs were lower than comparable communities; particularly for youth, teens, and seniors, driving a recent priority to increase recreation programs and services.

As Medford continues to grow and the City looks to the future, this plan will address community needs and provide direction for the development of parks and leisure services for the twenty-year period. The City has an excellent foundation for a thriving park system and the potential to provide comprehensive recreation programming for the entire community. However, to provide a higher level of service to residents, this plan supports both improvements to the existing system and early acquisition of new park land while the opportunity exists to do so.

STATE RECREATIONAL PLANNING LAWS

Statewide Planning Goal 8

Oregon's Statewide Planning Goal for Recreational Needs (Goal 8) states:

"To satisfy the recreational needs of the citizens of the state and visitors and, where appropriate, to provide for the siting of necessary recreational facilities including destination resorts."

PUBLIC FACILITIES ELEMENT

Goal 8 requires recreation planning, including an inventory of needs and existing opportunities, and a long-range plan with an action program. It recommends that the highest priority be given to facilities that: meet the needs of high density population centers; meet the needs of persons of limited mobility and finances; conserve energy; minimize environmental deterioration; are available to the public at nominal cost; and meet the needs of visitors to the state.

Goal 8 recommends that unique areas or resources that also meet recreational needs be inventoried and protected, or acquired, with high priority given to enhancing recreational opportunities on the public waters of the state and Oregon Recreational Trails. The Bear Creek Greenway path is a designated "Oregon Recreation Trail". Recreational plans should consider the carrying capacity of the air, land and water resources of the planning area, and actions should not exceed the capacity of such resources. It also recommends that parks and recreation planning take into account various techniques for acquisition, such as easements, cluster developments, preferential assessments, development rights acquisition, subdivision park land dedication that benefits the subdivision, etc.

The Parks Element includes an inventory of areas and resources unique to Medford including special use areas, natural open space areas, trails, paths, bikeways, and greenways.

OAR Division 660 Division 34 – State and Local Park Planning

660-034-0040 – Planning for Local Parks:

- (1) Local park providers may prepare local park master plans, and local governments may amend acknowledged comprehensive plans and zoning ordinances pursuant to the requirements and procedures of ORS 197.610 to 197.625 in order to implement such local park plans. Local governments are not required to adopt a local park master plan in order to approve a land use decision allowing parks or park uses on agricultural lands under provisions of ORS 215.213 or 215.283 or on forestlands under provisions of OAR 660-006-0025(4), as further addressed in sections (3) and (4) of this rule. If a local government decides to adopt a local park plan as part of the local comprehensive plan, the adoption shall include:
 - (a) A plan map designation, as necessary, to indicate the location and boundaries of the local park; and
 - (b) Appropriate zoning categories and map designations (a "local park" zone or overlay zone is recommended), including objective land use and siting review criteria, in order to authorize the existing and planned park uses described in local park master plan.
- (2) Unless the context requires otherwise, this rule does not require changes to:
 - (a) Local park plans that were adopted as part of an acknowledged local land use plan prior to July 15, 1998; or
 - (b) Lawful uses in existence within local parks on July 15, 1998.
- (3) All uses allowed under Statewide Planning Goal 3 are allowed on agricultural land within a local park and all uses allowed under Statewide Planning Goal 4 are allowed on forest land within a local park, in accordance with applicable laws, statewide goals, and rules.
- (4) Although some of the uses listed in OAR 660-034-0035(2)(a) to (g) are not allowed on agricultural or forest land without an exception to Goal 3 or Goal 4, a local government is not required to take an exception to Goals 3 or 4 to allow such uses on land within a local park provided such uses, alone or in combination, meet all other statewide goals and are described and authorized in a local park master plan that:
 - (a) Is adopted as part of the local comprehensive plan in conformance with Section (1) of this rule and consistent with all statewide goals;
 - (b) Is prepared and adopted applying criteria comparable to those required for uses in state parks under OAR chapter 736, division 18; and
 - (c) Includes findings demonstrating compliance with ORS 215.296 for all uses and activities proposed on or adjacent to land zoned for farm or forest use.

The City of Medford complies with ORS 660-034-0040(1)(a) and (b) through the adoption and implementation of a Parks and Schools designation on the *General Land Use Plan Map*, which depicts existing public parks and schools. There is no specific zoning district associated with this designation. Instead, parks and schools are permitted conditionally in all single-family residential zones, multi-family residential zones, commercial and light industrial zones. The City intends to pursue the development of objective land use and siting review criteria for parks.

PUBLIC FACILITIES ELEMENT

NEEDS ASSESSMENT

Citizen Involvement

One of the nineteen Statewide Planning Goals that must be addressed in a comprehensive plan is Citizen Involvement (Goal 1). The development of this Parks Element update incorporated citizen involvement in several ways, including: a community workshop, a sports group questionnaire, a city-wide recreation survey, and steering committee and Parks Commission involvement.

Community Workshop

A community workshop was held on September 14, 2004, in the Santo Community Center to obtain the attendees' vision for parks, recreation facilities, and programs in Medford.

Key findings are summarized below:

- Participants identified the following as the top facilities for priority development:
 - Sports field complex
 - Indoor recreation center
 - City-wide path and trail system
- Preservation of Prescott Park as a natural area was emphasized. Greater notoriety, easier access, additional parking and a trail-head were desired, along with improved trail systems for pedestrians, bicycles, and horses.
- Participants supported the expansion of recreational programming.
- The top three issues identified for Medford parks and recreation were:
 1. Funding
 2. Park and facility maintenance
 3. Upgrades to existing parks

Sports Group Questionnaire

In Fall 2004, organizations providing sports leagues in Medford were asked to fill out a questionnaire regarding the number of teams and players in the league, season of play, and field requirements. The sports group survey obtained information regarding twenty-seven different programs for adults and youth provided by both the City and private providers in Medford. This data was used to determine sports field and facility needs.

City-Wide Recreation Survey

A city-wide survey of public attitudes, recreation interests, and recreation participation was conducted in Fall 2004. Completed questionnaires were obtained from 438 households from the four quadrants of the City.

Key findings included:

- Neighborhood parks were the most frequently visited type of park or facility by respondents.
- Of all park and recreation services, respondents wanted most:
 - Upgrades to existing parks
 - Sports field development

PUBLIC FACILITIES ELEMENT

- More trails and paths
- Respondents clearly preferred an indoor aquatic center to meet future needs.
- The respondents supported increased programming for seniors, one of the fastest growing segments of the City of Medford population.
- The respondents supported increases to youth and teen programming. A growing national trend and awareness associating relatively minor teen programming costs with exponentially greater reduced law enforcement costs point to a substantial City cost benefit.
- Respondents wanted more off-street, paved multi-purpose paths throughout Medford.

Committee and Commission

A Steering Committee consisting of key City staff and citizens representing a variety of community interests met regularly throughout the planning process. This group provided advice and insight by discussing critical issues facing Medford parks and recreation and by reviewing key reports in the development of this Parks Element. Similarly, the Medford Parks and Recreation Commission also provided direction during the planning process.

EXISTING PARK FACILITIES AND FUNCTIONS

The Medford park system consists of both active and passive recreational areas, including a variety of park types, paths, trails and facilities. As can be seen in *Figure 1, Existing Park & Recreation Resources*, the City of Medford manages approximately 2,500 acres of park land, including nearly 75 acres leased from the Medford and Phoenix/Talent School Districts. The park land inventory includes over 454 acres of active parks, 14 acres of linear parks, nearly 1,923 acres of natural areas and greenways, and more than 124 acres of undeveloped sites. In addition, the City maintains nearly 15 acres of beautification areas, including greenways, roadway strips and islands, and landscaped areas around buildings.

Per *Figure 2, Path and Trails Plan*, the City has the foundation to a path and trail system. The Bear Creek Greenway path connects the City to adjacent cities from Ashland to Central Point as well as parks within the City. The path and trail system includes two standards: ten foot wide asphalt multi-use paths and five foot wide gravel or native soil multi-use trails built to the International Mountain Bike Association standards. Maintenance of paths and trails includes repairs from root damage, occasional flooding and erosion, removal of trees that have fallen, and general wear from use. The City has entered into a Joint Powers Agreement with Jackson County for the maintenance of the portion of the Bear Creek Greenway Path that is within the City of Medford Urban Growth Boundary. Development and maintenance of the Bear Creek Greenway Path is overseen by the Bear Creek Greenway Foundation. Adopted in January 2003, the Bear Creek Master Plan is an action plan for current and future redevelopment of the corridor.

The City of Medford is a significant provider of recreation and sport facilities. Additional facilities are provided by other entities as well, such as school districts and private providers. When all resources are counted, the total inventory for all recreation facilities in Medford is relatively high. However, some sports fields suffice as practice fields only, because they are inadequate for games. Other facilities have scheduling restrictions. The City provides many sports fields, but depends on school facilities for use of gymnasiums and adult baseball fields. The City has two outdoor pools, but the community relies on private providers to meet indoor swimming needs.

PUBLIC FACILITIES ELEMENT

The following facilities in Medford were counted as part of Medford's unrestricted inventory in 2006, meaning they were considered adequate for games/practice at that time:

- One adult baseball field
- Six adult softball fields
- Six youth softball/baseball fields
- Twelve soccer fields
- One football field
- Two gymnasiums
- Zero square feet of pool space

Medford's 2010 unrestricted inventory is listed below. As a note, the new artificial turf fields at the U.S. Cellular Community Park (USCCP) all are rated as having the capacity of three natural grass fields. This equivalency has been promoted by the industry for many years and was demonstrated by the Tualatin Hills Parks and Recreation District in their *HMT Complex, Field One "Artificial Surface" Usage Comparison*. This has more recently been confirmed by the increase in usage of the artificial turf fields at the USCCP during the 2009 - 2010 season and the information is documented in the *2010 Parks & Recreation Artificial Turf Comparison to Natural Grass Ball Fields Use*.

- One natural grass and one artificial turf adult baseball field (four equivalent fields)
- Five natural and five artificial* turf (60% use) adult softball fields (fourteen equivalent fields)
- Eight natural and five artificial** turf (40% use) youth softball/baseball fields (fourteen equivalent fields)
- Fifteen natural turf and five artificial turf soccer fields (thirty equivalent fields)
- Five artificial turf football fields (fifteen equivalent fields)
- One gymnasium
- Zero square feet of indoor pool space

* Adults share use of these five fields with youth leagues. Adult use is 60% of the total use. Five fields multiplied by three and then by 60% equal thirteen equivalent fields when the four natural fields are added in.

** Youth share use of these five fields with adult leagues. Youth league use is 40% of the total use. Five fields multiplied by three and then by 40% equal thirteen equivalent fields when the four natural fields are added in.

Additional inventory exists in a restricted capacity which is not considered readily available or adequate for games/practice.

In addition to park lands, path/trails, and sports facilities, the City of Medford has a public arts program, an urban forestry program and Tree Committee. As well, the Parks Department reviews landscape plans for all multi-family, commercial and industrial developments in the City for the Site Plan and Architectural Commission.

The Arts Commission was formed in 2000 to begin the process of bringing to fruition the vision for arts and culture in Medford. The Commission has developed a master plan which was adopted in 2009 (Public Art Selection and Acquisition Policy) to improve existing City sites with the addition or incorporation of public art. The plan includes funding sources and a priority listing for existing sites.

PUBLIC FACILITIES ELEMENT

The Arts Commission administers a Partnership Program whereby non-profit organizations, and their affiliates, may apply twice a year to partner with the Arts Commission on art-related projects/programs that serve Medford residents. By providing access to art they hope to create an environment of enrichment and pride for all citizens. Public art within our City adds a sense of discovery and vibrancy to public spaces.

The City of Medford recognizes the benefits and importance of its trees and urban forest. Therefore, the City has instituted an Urban Forestry Program and hired a Certified Professional Arborist in 2005 to manage that resource. One of the goals of the Urban Forestry Program is to inventory the current tree population and develop a system that is composed of a wide variety of species and age classes that will protect the urban forest from insect and disease outbreaks. The Urban Forestry Program manages trees on public rights-of-ways, in parks, and open spaces. Education on tree care is also provided to residents, and all tree care and maintenance is performed to currently accepted professional standards. The program is funded through the City's general fund with the goal to develop an urban forest that will be an environmental and economic asset and a source of community pride.

The City of Medford's ongoing excellence in urban forestry has been awarded with two prestigious honors from the Arbor Day Foundation. Medford received "Tree City USA" status for the fourteenth consecutive year as a result of meeting four required standards: having a tree board, a tree care ordinance, a comprehensive community forestry program and an Arbor Day observance and proclamation. Medford's municipal urban forestry efforts also earned a Growth Award for the fifth year, an accolade that hails environmental improvement and higher levels of tree care as a result of excellence in providing education programs, effective public relations, fruitful partnerships and wildland fire prevention coordination. The City's tree program has spurred the planting of 1,233 trees and pruning of 2,133 others on civic property along with an overall investment of over \$1.46 million from a variety of funding sources since 2005.

The Tree Committee is a sub-committee of the Parks and Recreation Commission. It was formed to advise the Commission on matters regarding trees in the right-of-ways and in park lands. The Committee strives to maintain and enhance the livability of the community through education on the benefits of trees, proper tree maintenance and fostering planting and preservation of trees where appropriate. Each year they plan and develop an Arbor Day observance and celebration for the City.

The Site Plan and Architectural Commission consists of seven City residents, including one Planning Commissioner. The Commission's duties include making quasi-judicial decisions on proposed multi-family, commercial and industrial development projects relative to architecture, landscaping, and site design. The Parks and Recreation Director is charged with ensuring that a department review of landscape code requirements occurs to assist the Commission. A Parks Planner currently serves as staff to the Commission, providing said reviews.

PUBLIC FACILITIES ELEMENT

Inventory of Existing Parks

**Table 1
Existing Parks**

| Site Number | Site Name |
|-------------|---------------------------------|
| NP-16 | Alba Park |
| OSG-8 | Bear Creek Greenway |
| OSG-3 | Bear Creek Greenway Park |
| CP-22 | Bear Creek Park |
| LP-30 | Biddle Road Path |
| SU-14 | Carnegie Building |
| NP-60/SU | Chrissy Park |
| NP-34 | Delta Waters School Park |
| NP-37 | Donahue-Frohnmayr Park |
| MP-32 | Earhart Park |
| LP-52 | East McAndrews Path |
| CP-23 | Fichtner-Mainwaring Park |
| CP-31 | Hawthorne Park |
| NP-40 | Holmes Park |
| NP-41 | Hoover School Park |
| NP-5 | Howard School Park |
| SU-39 | IOOF/Eastwood Historic Cemetery |
| NP-11 | Jackson School Park |
| NP-24 | Jefferson School Park |
| NP-35 | Kennedy School Park |
| OSG-44 | Larson Creek Greenway |
| OSG-42 | Lazy Creek Greenway |
| NP-17 | Lewis Park |
| NP-46 | Lone Pine School Park |
| CP-26/OSG | U.S. Cellular Community Park |
| CP-36 | North Medford High School Park |
| NP-43 | Orchard Hill School Park |
| NP-54 | Oregon Hills Park |
| OSG-61 | Prescott Park |
| NP/SU-7 | Railroad Park |
| OSG-6 | Railroad Park Greenway |
| NP-33 | Roosevelt School Park |
| MP-38 | Ruhl Park |
| SU-48 | Summerfield Park |
| SU-9 | Santo Community Center |
| NP-2/OSG | Table Rock Park |
| NP-18 | Union Park |
| NP-25 | Veterans Park |

¹ Each site is coded with letters and numbers (such as NP-12). The letter represents the park type, the legend to these abbreviations can be found at the bottom of the Table. Some sites have more than one designation. For example, CP/OSG is a Community Park with Open Space Areas within part of the park land. The site number is for site identification only. These site numbers are included in *Figure 3, Facilities Plan*.

PUBLIC FACILITIES ELEMENT

| Park Type Site Number | |
|--------------------------|------------------------|
| SU-15 | Virginia Vogel Plaza |
| NP-19 | Washington School Park |
| NP-20 | Wilson School Park |

Park Type Legend:

| | | | |
|----|-------------------|-----|------------------------------------|
| NP | Neighborhood Park | LP | Linear Park |
| CP | Community Park | OSG | Natural Open Space Areas/Greenways |
| SU | Special Use Area | UD | Undeveloped Park Land |
| | | P | Path |

**Table 2
Existing /Path/Trails**

| Site Number | Site Name | Park Type | Comments |
|-------------|----------------------------|-----------|--|
| NP-16 | Alba Park | NP | Minimal path system |
| P-13 | Bear Creek Greenway | OSG | North/south through Medford |
| CP-22 | Bear Creek Park | CP | Numerous paved paths & trails |
| LP-30 | Biddle Road | LP | Hawthorne Park to Morrow Lane |
| NP-34 | Delta Waters School Park | NP | Moderate loop path & trail |
| NP-37 | Donahue-Frohnmayr Park | NP | Moderate loop path & trail |
| LP-52 | East McAndrews Rd. Path | LP | North side of McAndrews Road |
| NP-40 | Holmes Park | NP | Path & trails |
| NP-5 | Howard Park | NP | Moderate loop path |
| NP-11 | Jackson Park | NP | Moderate path system |
| OSG-44 | Larson Creek Path/Trail | OSG | Black Oak Dr. to N. Phoenix Rd. |
| OSG42 | Lazy Creek Path | OSG | Burgundy to Siskiyou Blvd. |
| NP-46 | Lone Pine Park | NP | Moderate loop path |
| CP-55 | Prescott Park Trail system | OSG | Numerous trails |
| NP-48 | Summerfield | NP | Short loop path |
| NP-38 | Rhul Park | NP | Short path |
| P-16 | Lone Pine Creek Path | OSG | Lone Pine Creek at Navigators' Landing |
| NP-18 | Union Park | NP | Short path |

Prescott and Chrissy Parks

During the public involvement process, citizens expressed a desire to improve trails within Prescott Park and envisioned a path/trail system within Chrissy Park once brought into the UGB.

Prescott Park, located on and around Roxy Ann Peak, totals 1,740 acres. The park was established with an initial gift of 200 acres purchased by the Lions Club and donated to the City of Medford in 1930. An additional 1,500 acres was acquired by the City through the Federal Lands to Parks Act of 1931. An additional 40 acre parcel was later purchased by the City and added to the park holdings. Prescott Park

² The site number is for site identification only. These site numbers are included in *Figure 3, Facilities Plan*.

PUBLIC FACILITIES ELEMENT

in its entirety has been set aside and reserved for exclusive park use and federal regulations restrict the land from being used for other than public park purposes. Prescott Park is largely undeveloped but has a network of hiking trails, overlooks, and picnic areas with restrooms. Communication facilities are located near the summit. Efforts to more fully improve and utilize the land as an urban public park has been hampered by its being located outside but adjacent to Medford's corporate jurisdiction. That Prescott Park is located outside Medford, has made land use permitting and public facility extensions difficult, time consuming and costly, requiring the City of Medford to obtain land use approvals for park improvements through Jackson County.

Chrissy Park, located east of Medford, south of Hillcrest Road on Cherry Lane, totals 160 acres. The site, located just outside City limits, was donated to the City in 1997 by a Medford resident. The park is undeveloped, and the City will have to reverse damage done to the land over the past century due to orchard operations, development and open grazing. Mitigation of soil and water problems due to the site's steep, unstable slopes also needs to occur throughout the park.

In the future, Prescott and Chrissy Parks, currently outside but abutting the current Urban Growth Boundary, will serve to meet a variety of park needs for Medford residents. These include provisions of open space that is conveniently located and economically accessible to all City residents. Medford has a policy to pursue inclusion of Prescott and Chrissy Parks in the Medford Urban Growth Boundary for eventual inclusion within the City limits. This will enable the City to extend needed urban infrastructure and services, such as police and fire protection, streets and sanitary sewer, to these parks.

Medford's policy of striving to acquire parkland having natural features or resources, or that is of significant interest to the public, is partially met through these parks. Prescott Park is given special consideration in protecting the City's most significant natural and recreational resource and most significant scenic view and viewpoint for the enjoyment of present and future generations. Prescott Park contains 1,725 acres of natural open space.

The identified need for nature trails, trailheads, and overlooks/viewpoints can also be well accommodated in these parks. By the year 2030, Medford will need an additional 15 miles of recreational trails. Upon annexation, the City plans to develop Chrissy Park, as both a Neighborhood Park and a Special Use Area, combining path/trail uses with a Neighborhood Park. An interconnected system of trails, paved paths and bikeways will provide a safe place for non-motorized transportation in east Medford.

Thus, both Prescott and Chrissy Parks, upon inclusion into the City of Medford UGB, are planned to include an integrated park environment that includes both intensive urban park elements and natural park elements. The urban park elements are expected to function as activity centers that attract concentrations of urban populations into these unique areas where City residents can enjoy recreation experiences with urban and natural dimensions in immediate proximity to the largest population center in Jackson County. The special mix of land uses expected for these parks can be better administered pursuant to the objectives of Statewide Planning Goal 8 where the urban park elements may be freely planned to support intensive urban elements and appropriate planning for the natural areas. This will assure the parks are planned under the City's Comprehensive Plan to include use intensities that balance the unique resources and assets these parks represent in a manner that advances the City's Statewide Planning Goal 8 objectives.

PUBLIC FACILITIES ELEMENT

PARKS FACILITIES PLAN

A new planning concept involves improving pedestrian and bicycle access and connectivity for parks and facilities in Medford. Strategies include developing bike lanes and paths connecting into the existing Bear Creek Greenway path and adding east-west connections, along with connections between parks.

The strategies in the facility plan are designed, in part, to provide facilities that will accommodate new programs and services, as the City expands its role in providing recreation programs and services to the Medford community and the region overall.

The Facilities Plan Map is a graphic representation of the park system at build-out. **Figure 3, Facilities Plan**, illustrates the conceptual location and routing of proposed park sites and paths/trails, along with the location of existing facilities. This conceptual plan takes into account general land-use patterns, the expertise of key City staff, and existing plans for parks (i.e., the Southeast Plan). However, the map does not pinpoint exact locations for these sites. Some important notes about the Facility Plan include:

1. Each site is coded with letters and numbers (such as NP-12). The letter represents the park type, and the number is for site identification only. These references are included on the **Figure 3, Facilities Plan** and with project descriptions for each site. Some sites have more than one designation (CP/OSG, a Community Park with Open Space Areas within part of the park land).

| | |
|-----|------------------------------------|
| NP | Neighborhood Park |
| CP | Community Park |
| SU | Special Use Area |
| LP | Linear Park |
| OSG | Natural Open Space Areas/Greenways |
| UD | Undeveloped Park Land |
| P | Path |

2. On **Figure 3, Facilities Plan**, colored asterisks indicate proposed neighborhood parks, community parks, and special use areas. The symbols show a general location for each proposed park. The final location of park sites will be determined later in the development of City plans and will be influenced by land availability, acquisition costs, and property ownership. When possible, the proposed location matches existing City plans.
3. Names for proposed sites are for *reference only* and have not been approved by City staff, the Parks Commission, or the City Council.

Key points of the facilities plan are summarized below:

- Improvements are proposed to most of the City's parks. Improvements include replacement or repair of aging facilities, changes to facilities to reduce maintenance costs, repair due to vandalism, and the addition of new facilities to reflect the changing needs of a maturing park system. These projects are not growth-related, and therefore not eligible for System Development Charge (SDC) funding.
- Significant upgrades are proposed for the outdoor pools at Hawthorne and Jackson parks. Maintenance costs for these two pools (which have aged beyond a pool's typical lifecycle) have

PUBLIC FACILITIES ELEMENT

become extreme. It recommends that the City evaluate the feasibility of replacing Hawthorne Pool with a water park at some location within the City.

- The plan also recommends that the City develop an indoor recreation center/aquatic facility in the long term to meet swimming and gymnasium needs.
- One new gymnasium with two courts was funded in the 2005 – 2007 biennial budget at the existing Santo Community Center, and was completed in 2009.
- Four new community park sites have been identified to meet future service area needs as well as community needs for sports facilities.
- The plan identifies U.S. Cellular Community Park as having mixed park uses.
- The acquisition and development of several small greenway connectors is planned to support the intra-community path/trail system and to increase park connectivity.
- A joint plan for developing Alba Park and the Carnegie Building is contemplated.
- The plan supports efforts for funding and implementing the *Bear Creek Master Plan* and completing path/trail linkages along Bear Creek.
- Existing City park land will be utilized for new parks whenever park service area requirements can be met.
- Working with partner agencies to help meet the demand for indoor and outdoor sports facilities will be a high priority.
- The City will seek to acquire park land in advance of need to reduce land acquisition costs.
- Opportunities for program marketing and public information will continually be sought out.
- An increase in the following recreation programs and services is anticipated: aquatics, instructional classes, special interest programs, outdoor programs, special events, and senior programs.
- The Plan anticipates increasing recreation programs fees in alignment with fees charged by other providers community-wide, while implementing scholarship programs and discounted services for residents in need.
- Improved maintenance management through cost tracking to improve maintenance levels of service at parks and recreation facilities is identified as a priority.
- The City will consider all sources of funding, including bonds, levies, grants, donations, and sponsorships, to address existing financial challenges.

PARK LAND AND FACILITY NEEDS

Proposed Park Land

Ten additional neighborhood park sites and four community park sites were identified by the community to meet Medford's vision for parks. However, the 25-year project list adopted on January 19, 2006 did not include a number of the proposed sites because the City could not support a Parks System Development Charge (SDC) large enough to include all park projects. As these are typical facilities for a city the size of Medford, additional creative funding sources will be pursued for these facilities.

As opportunities to develop greenways and linear parks along creeks, canals, utility corridors, and roadways arise, the City will seek to develop a path/trail system that will interconnect parks, schools, and recreation facilities. The City will also seek opportunities to add linear park and open space/greenways to include trails and paths.

**Table 3
Proposed Parks**

| Site Number | |
|-------------|---------------------------------|
| NP-47 | Brookdale Park |
| NP-45 | Cedar Links Park |
| NP-56 | Cherry Park |
| NP-21 | Columbus Park |
| NP-49 | Country Club Park |
| NP-51 | Foothills Park |
| CP-55 | Hillcrest Park |
| CP-27 | Hopkins Creek Park |
| SU-62 | Larson Creek (Middle Fork) Park |
| SU-50 | Larson Creek (North Fork) Park |
| SU-59 | Larson Creek (South Fork) Park |
| NP-12 | Liberty Park |
| NP-4 | Midway/Merriman Park |
| NP-13 | Oak Grove Park |
| NP-58 | Oak Tree Park |
| CP-53 | Orchard Park |
| NP-10 | Ross Lane Park |
| CP-57 | Shamrock Park |
| CP-20 | Sunset Park |
| NP-28 | Whittle Avenue Park |

Legend:

- NP Neighborhood Park
- CP Community Park
- SU Special Use Area
- LP Linear Park
- OSG Natural Open Space Areas/Greenways
- UD Undeveloped Park Land
- P Path

Proposed Paths and Trails

The following table lists the proposed paths/trails that are noted in the Path and Trails Plan. Each proposed path/trail should be assessed for its suitability to develop as part of a linear park or greenway, in order to meet community needs for these park types. Preliminary indications for path/trail inclusion as a linear park (LP) or open space greenway (OSG) are noted in the table, along with any applicable comments. Each proposed path/trail should also be assessed to determine its type. As new parks are developed, internal paths/trails will be constructed in addition to those noted in the following Table 4.

Figure 2, Path and Trails Plan shows the proposed path/trails, including existing paths and conceptual routes for proposed multi-use paths, planned sidewalks, and planned bicycle lanes. Park trails are typically too short to be visible on a City-wide map, at the scale shown. Note that bike lanes not only

³ Each site is coded with letters and numbers (such as NP-12). The letter represents the park type, the legend to these abbreviations can be found at the bottom of the Table. Some sites have more than one designation. For example, CP/OSG is a Community Park with Open Space Areas within part of the park land. The site number is for site identification only. These site numbers are included in *Figure 3, Facilities Plan*.

PUBLIC FACILITIES ELEMENT

provide connections where off-street paths are not possible, but they also support commuter bicycle travel. The 2009 project list funds a new category of “trails” to be constructed in Prescott Park.

**Table 4
Proposed Paths**

| Site Number | Name | Trail Type (LP and/or OSG) | Comments |
|-------------|----------------------------------|----------------------------|--|
| P-2 | East Vilas Road Path | | |
| P-3 | Medco Haul/Cedar Links Road Path | LP | Connects P-2, Kennedy School, NP-45 and P-6 |
| P-4 | Crater Lake Hwy Path | | |
| P-5 | Hopkins Creek Path | OSG | Follows the Hopkins Canal |
| P-6 | Foothill Road/Main Canal Path | LP/OSG | Connects Prescott, East McAndrews Path, SU-48, SU-50, and Larson Creek Greenway |
| P-7 | North Fork Lazy Creek Path | OSG | Connects Prescott, East McAndrews Path, Oregon Hills Park, SU-48, P-6, and P-8 |
| P-8 | East McAndrews Path Extension | LP | Connects East McAndrews Path, Oregon Hills Park, and CP-55 |
| P-9 | Prescott/Chrissy/SE Area Path | LP | Connects Prescott and Chrissy Parks |
| P-10 | Larson Creek (North Fork)Path | OSG | Connects P-9, NP-56, CP-57, and SU-50 |
| P-11 | Larson Creek (Middle Fork) Path | OSG | Connects the Bear Creek Greenway to the two existing OSG for Larson Creek |
| P-12 | Larson Creek (South Fork)Path | OSG | South Larson Creek |
| P-14 | Garfield Street Path | LP | Connects Jefferson School Park to Bear Creek Greenway |
| P-15 | S. Stage Road Path | OSG | Connects Bear Creek Greenway at the Medford US Cellular Community Park along S. Stage Road |
| P-16 | Table Rock Path | OSG | Connects Biddle Rd. to Table Rock Rd. |

Proposed Specialized Facilities

Aquatic Facilities

As of summer 2010, the City of Medford is involved in a multi-year evaluation of the City’s aquatic facilities needs. Therefore, this 2010 update does not report any final conclusions from the multi-year aquatic facilities study because it is still underway. Although outdated, 2006 aquatic facility needs have

⁴ The site number is for site identification only. These site numbers are included in *Figure 3, Facilities Plan*.

PUBLIC FACILITIES ELEMENT

been included for historical reference, and will be updated upon the conclusion of the current evaluation of the City of Medford aquatic facilities needs.

In January 2007, the City retained ORW Architecture and Counsilman-Hunsaker to evaluate an aquatic master plan (called the Aquatic Facility Planning Study) to focus on the future of aquatics for the community. Seven concepts for continuing aquatic improvement for the City of Medford were developed for consideration.

In November of 2008, REMI Northwest completed an analysis evaluating fiscal regional economic impacts of pool facilities improvement alternatives for the City. In November of 2009, the City of Medford contracted Ogden, Roemer Wilkerson Architecture (ORW) with the following scope of work:

Follow a public input process along with major considerations that have been made through recommendations to the City of Medford through the 2007 Aquatic Facility Planning Study and REMI Northwest Feasibility Study in developing a master plan for a regional water park facility. Identify necessary land use studies that will need to be completed and develop cost estimates associated with the facility. Identify possible sites for relocation of the current dog park and BMX facilities along with cost estimates for those relocations.

1. **Indoor Swimming Pool:** For many years, City residents have desired an indoor swimming pool. In 1999, a bond measure was introduced to fund such a facility, but it failed. The 2004 recreation survey, conducted as part of the Parks Element update effort, showed continued support for an indoor pool. The needs assessment identified market support for an indoor swimming pool. However, it was recognized that an indoor aquatic complex would have a regional draw and should be developed and funded by either a regional agency or a partnership with adjoining cities. The City has identified a need for one indoor pool, and the future need for two additional indoor pools.
2. **Outdoor Swimming Pool:** Currently, both outdoor pools managed by the City are old and have reached the end of their useful life. The future of Hawthorne and Jackson pools will depend on the timing of the construction of an indoor swimming pool. In the near-term, the City will seek to keep both pools operational. In the long-term, they will become prohibitively expensive to maintain, and the pools will need to be replaced. Replacement of these pools will not be eligible for System Development Charge (SDC) funds.
3. **Large Water Park/Playground:** This Parks Element proposes the development of a large water park/playground. The proposed water park/playground may replace one or both of the aging outdoor pools in a manner that recognizes the most contemporary trends for outdoor pool facilities.

Youth Activity Center

Youth activities that were formerly offered at the Jackson Park Activity Center have been moved across the street to the Santo Community Center into an existing building which has been converted for this purpose. This facility compliments the existing meeting/class rooms and gymnasium at the Santo Center.

PUBLIC FACILITIES ELEMENT

Jefferson Nature Center

A natural resource center has been developed at the U.S. Cellular Community Park. This facility utilized an existing farmhouse located on the site. The facility houses offices, exhibits, and educational opportunities focusing on local ecosystems, as well as the current and historic aspects of the Rogue Valley. This facility is operated and managed by the Jefferson Nature Center, a non-profit special interest group.

Indoor Recreation Center

Because of the demand for indoor recreation space including gymnasiums, the City has adopted a project list that includes the development of three multi-purpose indoor recreation centers, twelve gymnasium courts, and a 10,500 square foot indoor swimming pool. Currently, access to school facilities has become difficult because of the demands of other user groups. Such indoor facilities would expand recreation opportunities considerably and help meet community needs for gymnasium and programming space. According to the 2004 survey and input at the public meetings, recreation centers would have substantial community support.

Desired amenities within or adjacent to a recreation center include:

- Indoor pool/outdoor water park
- Gymnasium space for basketball, volleyball and similar activities, and organized sports
- Fitness space (exercise/aerobics areas and weight training rooms)
- Places for large group gatherings
- Multi-purpose classrooms and meeting space
- Specialized activity areas, such as dance studios, stage for performing arts, and other indoor recreation activities. An indoor recreation center could become a part of an indoor aquatic complex described above.

Public Restrooms

The public has clearly requested that restrooms be placed in public parks. Although public restrooms in parks are expensive to construct and maintain, they provide a convenience to the park user.

- Permanent restrooms will be provided in Neighborhood and Community parks
- Portable restrooms may be provided to facilitate seasonal uses of parks

Sports Facilities

The current deficiencies in sports facilities are:

- Two adult natural turf or one artificial turf baseball fields
- One additional indoor pool to meet the current need

The need for additional sports fields and facilities were noted in the survey and documented in the Needs Assessment. The following is a list of objectives for the development and management of sports facilities:

Sports Facility Development Objectives

- Work with partner agencies, especially schools, to help meet demand for indoor and outdoor sports facilities. Develop and maintain inventories and evaluations of shared sports facilities.

PUBLIC FACILITIES ELEMENT

- Continue partnering with the school districts to ensure community access to school gymnasiums.
- Assess existing and proposed sites for the feasibility of developing additional sports fields, particularly adult softball fields, youth baseball/softball fields, and adult and youth soccer fields.
- Design soccer fields to accommodate related field sports, such as lacrosse, ultimate Frisbee, and rugby.
- Provide all-weather field surfaces and outdoor lighting to expand usability and playing seasons in community parks, special use facilities, or in shared school/park facilities. Consider lighting impacts to nearby residences when developing plans for these facilities.
- Design sports fields in complexes to facilitate tournament play and league play, as well as to improve maintenance and programming efficiencies.
- Pursue partnerships to develop a multi-use, indoor aquatic complex (in the long term).

Sports Facility Management and Operations Objectives

- Consider a three-tier maintenance schedule for sport fields with tournament fields receiving the highest level of maintenance and practice fields receiving the lowest level of maintenance.
- Create a field scheduling committee to maintain the most efficient use of fields. This committee should be headed by City staff, but include representatives of the user groups and school officials. The procedure for scheduling should follow the methodology created in the Needs Assessment.
- To maintain the fields for quality playing conditions, a rest and rotation schedule should be developed and followed.

PATH AND TRAILS PLAN

The Path and Trails Plan identifies potential routes for recreational trails, paths, and bikeways to provide a safe path network that links neighborhoods, parks, schools, recreation sites, and other community attractions.

The plan includes:

- Off-street paved, multi-purpose paths for walking and recreational biking.
- A geographic distribution of path/trails balanced throughout the City. Acquisition of additional routes for future trails and paths can be extremely challenging and/or expensive, especially in West Medford where development is extensive.
- Creation of a path and trail system will require inter-departmental cooperation for successful development of off-street paths during the construction of new streets.

The Path and Trails Plan includes a major intra-community system to provide linkages between parks, community facilities, residential areas, schools, and open space sites. The system is based on providing east-west linkages to connect to the Bear Creek Greenway path.

Some of the path pieces are already owned and maintained by the City. However, most of the system is not in place. Much of Medford will have to be retrofitted to accommodate paths. With an aggressive approach toward connecting existing and future pieces, Medford could create an extensive network to provide a wide variety of path/trail experiences. The focus of path/trail development should be placed on

PUBLIC FACILITIES ELEMENT

undeveloped areas with consideration for development in “future growth areas” outside the current Urban Growth Boundary. Since the City’s undeveloped areas are fast being developed, these paths/trails are most urgent. Medford also needs to place more emphasis on the maintenance of paths and trails already in existence.

In public involvement venues, the community expressed a preference for off-street, paved paths for pedestrian and bicycle use. However, where path opportunities have been lost to development, it may be necessary to construct on-street sidewalks and bike lanes to complete specific segments. The plan also contemplates coordinating with Jackson County the joint planning and/or development of paths or trails that lay outside of the City’s Urban Growth Boundary.

Several of the proposed paths may be developed within linear parks and greenways, where wider corridors (minimum fifty feet) can be acquired. This development will help meet identified community needs for open space, greenways, and linear parks.

Paths will have concrete or asphalt surfacing, with their width varying from five feet to twelve feet. Paths currently exist throughout the City, within parks, along streets, and adjacent to greenways. The Parks Element identifies the need for 18.7 miles of paths. The 2009 SDC Capacity Improvements Plan has included thirteen miles of paths for development to serve future needs.

Trails will have gravel or natural soil surfacing, with their width varying from five feet to twelve feet. Trails currently exist within Prescott Park and are scattered throughout a few Neighborhood and Community Parks, such as Bear Creek, Donahue-Frohnmyer and Holmes Park. The Parks Element identifies the need for 13.2 miles of trails. The 2009 SDC Capacity Improvements Plan has included 11.3 miles of trails for development to serve future needs.

Path and Trail Types

The purpose of the *Path and Trails Plan*, shown in *Figure 2*, is to show how existing and proposed park and recreation facilities can be interconnected via a path system. The proposed plan identifies conceptual routes for paths. However, park trails would require a level of detail that can not be made visible on a City-wide map, at the scale shown.

Paths within Public Street Rights-of-Way

- The easiest walkways and bikeways to build are those within public street rights-of-way. These include three types:
 - *Sidewalks and on-street bicycle lanes:* Pedestrian/bicycle ways within public street rights-of-way are typically sidewalks and on-street bicycle lanes. By state law, all new streets must have sidewalks and all new major streets must have bicycle lanes. Medford also requires sidewalks to be set back from traffic lanes by a planter strip. The adopted *Medford Transportation System Plan* (TSP) indicates existing and planned bicycle lanes and sidewalks. The planned walkways and bikeways will be part of new streets or improvement projects. The Medford Bicycle and Pedestrian Advisory Committee have developed recommendations regarding funding priorities.
 - *Paths within street rights-of-way but separated:* Paths that are within street rights-of-way but separated have two major concerns: (1) they can be dangerous, and (2) they result in having to acquire a much wider right-of-way. These separated paths are undesirable because they are not

PUBLIC FACILITIES ELEMENT

perceived as a sidewalk, yet they cross many driveway and street intersections. These paths require very detailed design for even minimal safety. Paths that are along a continuous feature, such as the Biddle Road Path, can be safer since there are few intersections. These routes are ideal within linear parks; however, they are unsafe for cyclists if they do not have suitable locations to enter or exit from the street without causing the cyclist to ride against traffic. Additional on-street bicycle lanes are needed when a path abuts a major street to avoid conflicts between walkers and faster cyclists. This results in the need for a very wide right-of-way which can be nearly impossible to acquire in a developed area due to cost and impact. A separated path along a street, if necessary, can be accommodated more easily in undeveloped areas and would have to be coordinated very closely with street design engineers.

- *Accessways*: Accessways are short public paths that serve as connections for non-vehicular travel. The City requires accessways to be constructed when cul-de-sacs are necessary or where there are overly long blocks. They are also useful to provide access to parks and schools if they do not abut a street.

Paths Not Within Street Rights-of-Way

- Rights-of-ways for paths that are not within streets are very difficult to acquire unless done at the time of initial land planning and development. Property owners are often reluctant to grant or sell easements or land, and often object to having the public near their property if not on a street. These issues can be reduced if a detailed path and trail plan is adopted prior to any development. Studies have shown that properties near paths/trails have higher values. Paths should not be crossed frequently by at-grade intersections, so the best locations are along linear features that have few access points or crossings such as creeks, canals, freeways, airports, railroads, etc. Several proposed paths have been adopted in the *Medford Transportation System Plan*. Many irrigation canals exist in Medford, usually within easements granted to the Irrigation Districts. The City should work with the property owners and districts to obtain public access easements along the canals as some other Southern Oregon cities are doing. This opportunity will peak when the canals are piped to reduce evaporative loss from the open ditch that exists today. The path can then be developed over the piped irrigation canal.

Paths/trails in Greenways

- Greenways are typically linear open space areas and contain natural habitat or vegetation, and most often, a waterway or wetland. Greenways can be less difficult to acquire since they are undevelopable, and property owners may be willing to donate or sell them. Medford already has regulations that restrict disturbance within fifty feet of the top-of-bank of Bear Creek, Larson Creek, and other fish-bearing streams. Medford also has an adopted Greenways and Paths Plan for the Southeast Plan Area. Policies to guide the management of these existing greenways are needed.

To meet community needs for both path/trails and greenways, it is recommended that the City Council set a policy to strive to acquire all remaining natural areas that lend themselves to being greenways. Eugene has similar policies in place to protect riparian habitat. A Riparian Area Inventory and Assessment has already been prepared for the Medford UGB. In the past, Medford has avoided acquiring natural areas or their maintenance responsibility due to a lack of committed funding. However, public agencies may be the best stewards of such areas and greenways lend themselves to outdoor education/recreation opportunities as well as creating open space and separation between residential areas. Greenway path/trails also provide opportunities for many top

PUBLIC FACILITIES ELEMENT

ranking recreational activities, both in terms of measured local participation and national and state trends.

Greenways often contain paths/trails, which can conflict with habitat preservation. However, path/trails in greenways are less objectionable to property owners because few greenway path/trails directly abut private properties. It is recommended that the City Council set a policy to acquire public access easements when storm water maintenance easements are acquired within and along waterways. This dual purpose use is required within the Southeast Area.

FUNDING

The following 25-Year Capital Improvement Plan was adopted by the City Council on January 19, 2006, funded by a three-step Parks System Development Charge (SDC) increasing over three years. A Parks SDC fee for new single family residences of \$2,544 started at 80% of this amount in 2006, moved to 90% in 2007, and 100% in 2008.

| Capital Improvement Plan, 2007-2032 | |
|-------------------------------------|---------------------|
| Item | Cost |
| 2007 - 2012 Budget | |
| Neighborhood Parks | \$1,860,000 |
| Community/Urban Parks | \$2,718,765 |
| Recreation Facilities | <u>\$444,300</u> |
| Sub-total: | \$5,023,065 |
| 2012 - 2017 Budget | |
| Neighborhood Parks | \$1,200,000 |
| Community/Urban Parks | \$3,000,000 |
| Recreation Facilities | <u>\$549,000</u> |
| Sub-total: | \$4,749,000 |
| 2017 - 2022 Budget | |
| Neighborhood Parks | \$1,860,000 |
| Community/Urban Parks | \$2,589,300 |
| Recreation Facilities | <u>\$596,700</u> |
| Sub-total: | \$5,046,000 |
| 2022 - 2027 Budget | |
| Neighborhood Parks | \$1,207,500 |
| Community/Urban Parks | \$2,589,300 |
| Recreation Facilities | <u>\$889,000</u> |
| Sub-total: | \$4,685,800 |
| 2027 - 2032 Budget | |
| Neighborhood Parks | \$2,835,000 |
| Community/Urban Parks | \$0 |
| Recreation Facilities | <u>\$1,916,420</u> |
| Sub-total: | \$4,751,420 |
| 25-year Compliance Costs | <u>\$1,575,000</u> |
| TOTAL | \$27,822,500 |

The total cost for the 2005 preliminary 25-Year Parks Master Plan was estimated to be \$118,951,250, requiring an SDC for new single family residences of \$5,900. This was far more than the City financed through SDC at that time. The City adopted a reduced project list in 2006 totaling \$27,822,500 by eliminating a standard for Special Use Areas and linear parks; eliminating five Neighborhood and two Community Parks; eliminating five Adult Baseball/softball fields, two Football fields, nine Soccer

PUBLIC FACILITIES ELEMENT

Fields, and one Gymnasium; and by not including Community Centers, an Aquatic Center, and many proposed path/trails. These eliminated facilities may be developed using alternative funding sources or developed with an increase to current SDC rates.

The 2006 25-Year Plan identifies five new Neighborhood Parks for City Council funding, three utilizing existing park land. It also funds the completion of three existing and unfinished Neighborhood Parks. One additional new Neighborhood Park, Summerfield Park, was completed in 2007.

The plan also identifies the sports fields at the existing U.S. Cellular Community Park, the development of one Community Park adjacent to the existing park land at Prescott Park, and the acquisition and development of two new Community Parks for City Council funding.

The following recreational facilities are also included the 2006 25-Year Plan:

Eighteen Youth Baseball/Softball Fields (\$628,200)
Thirteen Adult Softball Fields (\$1,006,200)
Ten Soccer Fields (\$1,941,800)
Two Gymnasium Basketball Courts (\$1,500,000)
Two and forty-five hundredths (2.45) miles of trails (\$1,126,000)

Summary of Costs for SDC Eligible Growth Required and Deficiency Projects

| Item | Cost |
|-----------------------------|---------------------|
| 1) SDC Eligible Growth Cost | \$23,940,720 |
| 2) Park SDC Deficiency | <u>\$3,881,780</u> |
| TOTAL | \$27,822,500 |

As the City's population increases, new facilities must be built to maintain the City's current level of park, recreation and leisure services. Growth-required facilities that were not built in the past become deficiency projects which can no longer be funded through park SDC funds. The 2006 25-year cost of deficiency projects totals \$3,881,780, which, when spread out over a 25-year period, will require \$155,271 per year to complete. This is considered achievable, anticipating grants, donations through the Parks and Recreation Foundation, volunteer efforts, as well as non-SDC funding sources, both existing and proposed, such as the Car Rental Tax, the Park Utility Fee, and a \$10,000,000 bond which is assumed in the January 2009 Parks and Recreation System Development Charges Methodology Update.

The City Council established a Park Utility Fee to be paid by the responsible party for each developed property within the corporate limits of the City. Such fee shall not be imposed in amounts greater than that which is necessary, in the judgment of the City Council, to provide sufficient funds to properly maintain parks, facilities, beautification and right-of-way areas. Collection of the fee for each property shall be made by a monthly charge which shall commence on the first day of August, 2005. The City Council may, from time to time, by ordinance, change the fee based upon revised estimates of the cost of properly maintaining parks, facilities, beautification and right-of-way areas, or other factors identified in the ordinance.

PUBLIC FACILITIES ELEMENT

In 2009, the Medford City Council adopted an update to the 2006 project list with a proportional increase to the Park SDC. The SDC for new single family residences increased May 1, 2009 to \$2,986.00 and May 1, 2010 to \$3,433.00. The 2009 project list added the following projects to the 2006 project list :

- Twenty-eight acres of Neighborhood Park Acquisition and fifty-nine acres of existing and/or new park development
- Fifty acres of Community Park Acquisition and sixty-five acres of existing and/or new park development
- Three Youth and three Adult ball fields
- Nine Gym courts
- Eleven miles unpaved and thirteen miles of paved paths
- 10,500 square feet of indoor swimming pool
- Two Santo size Community Centers and one small Neighborhood Center

The Parks Element contemplates all future park funding needs, both required and hoped for. It includes current maintenance and deferred maintenance from past funding shortfalls; replacement of aging facilities; upgrades needed to reduce maintenance costs; and new facilities expected of a vital and contemporary park system. The Parks and Recreation Department proposes a number of innovative funding strategies for the creation and maintenance of a park system the citizens of Medford have envisioned and need for their health and welfare.

GUIDELINES FOR SITE SELECTION AND DEVELOPMENT OF PARKS

The following design guidelines apply to the acquisition and/or development of parks within each park classification. Each park classification includes a description of the park type, site selection and development guidelines, features to consider, and features to avoid.

Mini Parks

Mini Parks Description:

- The typical mini park user:
 - Comes from within a quarter mile or half mile of the park.
 - Arrives on foot or by bicycle.
 - Visits the park on a short time basis.

Mini Parks Site Selection and Development Guidelines:

- Mini parks may be considered when they are privately developed and maintained, or in neighborhoods where there are no other viable options.
- Typical size is less than one (1) acre
- Access to the site should be provided via a local street with sidewalks.
- Mini parks fronting on arterial streets are discouraged.
- The site should have a minimum of 100-150 feet of street frontage.
- Parking Requirements: On-street parking should be provided as street frontage allows.

Mini Parks Features and Amenities to Consider:

PUBLIC FACILITIES ELEMENT

- General landscape improvements (including tree planting)
- Children's playground or tot-lot
- Path connecting park elements
- Picnic tables and/or small picnic shelter
- Interpretive signage

Mini Parks Features to Avoid:

- Indoor recreation facilities
- Active sports facilities

Neighborhood Parks

Neighborhood Parks Description:

- Neighborhood parks provide nearby residents with access to basic recreation opportunities.
- These parks are designed to enhance neighborhood identity, preserve or provide neighborhood open space, and improve the quality of life of nearby residents.
- They are designed for passive and unstructured activities.
- The typical neighborhood park user:
 - Comes from within a half mile of the park.
 - Arrives on foot or by bicycle.
 - Visits the park on a short time basis.

Neighborhood Parks Site Selection and Development Guidelines:

- Optimum size is three to five acres, depending upon the availability of land.
- At least 50% of site should be relatively level and usable, providing space for both active and passive uses.
- The site should have at least 200 feet of street frontage.
- Access to the site should be provided via local streets with sidewalks.
- Neighborhood parks fronting on arterial streets are discouraged.
- Parking Requirements: A minimum of three spaces per acre of usable active park area. Generally, if on-street parking is available, this guideline can be reduced by one car per 25 feet of street frontage. City code requirements may provide more specific parking requirements.
- Active and noise producing facilities, such as tennis and basketball courts, should be located at least 100-feet from nearby homes or property zoned for a residential use.

Neighborhood Parks Features and Amenities to Consider:

- Open turf area for unstructured play
- General landscape improvements (including tree planting)
- Children's playground
- Basketball (full or half) court
- Path connecting park elements
- Internal trail system
- Picnic tables
- Small picnic shelter
- Volleyball court

PUBLIC FACILITIES ELEMENT

- Multi-use fields for practice
- Interpretive signage
- Natural area/green space
- Permanent restrooms
- Community Garden

Neighborhood Parks Features to Avoid:

- High maintenance horticultural or annual plantings, unless sponsored and maintained by a neighborhood or community group
- Indoor recreation facilities
- Wading pools and similar types of amenities that require staff supervision or highly specialized maintenance

Additional Considerations for School Parks:

- The City may encourage joint acquisition and use of contiguous school and park sites for recreational purposes that are beneficial to both City and School agencies.
- Because of jointly developed school/park sites, facilities will be a mixture of active and passive uses.
- This could include:
 - Paths systems
 - Picnic areas/facilities
 - Multi-purpose paved court
 - Small playground equipment
 - Baseball and soccer fields
- Because these sites are adjacent to school grounds, landscaping will address safety and security issues.
- Facilities generating crowds and/or noise will be located in a manner so as not to disturb adjoining residential areas.
- When sport fields utilized for league play are located on school grounds, the City should assist in maintaining these fields.

Community Parks

Community Parks Description:

- Community Parks (CP) provide visitors with active and passive recreation opportunities.
- These parks often accommodate large group activities and include major recreation facilities, such as sports fields.
- Community Parks are designed to enhance neighborhood and community identity, preserve open space, and enhance the quality of life of community residents.
- Typical community park users:
 - Come from within one mile of the park.
 - Arrive by auto, bus, bicycle or foot.
 - Visit the park for one to three hours.

PUBLIC FACILITIES ELEMENT

Community Parks Site Selection and Development Guidelines:

- Average site size will be 15 acres with the optimum at 20 to 30 acres, but may exceed 50 acres.
- Due to their size requirements, the acquisition of CP park sites will occur far in advance of need. Park development should occur when the area it serves becomes 50% developed.
- When possible CP sites will be located adjacent to middle or high schools.
- At least two-thirds of the site will be available for active recreation use. Adequate buffers or natural open space areas will separate active recreation areas from nearby homes.
- The site will be visible from adjoining streets and have a minimum of 400-feet of street frontage.
- Parking Requirements: Dependent upon facilities provided. Generally, 50 off-street spaces per ball field are required, plus five spaces per acre of active use areas. City code requirements may provide more specific parking requirements.
- Permanent restrooms are appropriate for this type of park.
- Access to the site will be provided via a collector or arterial street with sidewalks and bicycle lanes.

Community Parks Facilities and Amenities to Consider:

- Tot and youth playground
- Designated sports fields for baseball, softball, and soccer. Fields may be in a complex within the park
- Open turf area for unstructured play
- General landscape improvements
- Looped path system
- Internal trails system
- Picnic shelters, including at least one capable of accommodating groups of 25 to 50 people
- Permanent restrooms
- Volleyball courts
- Tennis courts
- Basketball courts
- Horseshoe pits
- Other sporting facilities (lawn bowling, croquet, bocce court)
- Community scale skate park
- Water playground
- Off-leash dog area or designated dog park
- Community gardens
- Concessions or vendor space
- Interpretive signage
- Natural area/green space
- Indoor recreation center or other indoor recreation space
- Public art
- Performance space, such as a stage area or band shell
- Special facilities such as an indoor recreation center or swimming pool
- Storage or maintenance buildings. If visible, these will be architecturally compatible with other park elements and any exterior work areas will be screened from view

PUBLIC FACILITIES ELEMENT

Special Use Areas

Special Use Areas Description:

- Special use areas are unique sites often occupied by a specialized facility.
- Some uses that fall into this category include waterfront parks, boat ramps, botanical gardens, memorials, community gardens, single purpose sites used for a particular field sport, or sites occupied by buildings.
- Typical users of special use areas:
 - May come from throughout the city or beyond (depends on use).
 - Arrive by auto, bus, bicycle or foot.
 - May visit the park for one hour to more than three hours (depends on use)

Special Use Areas Site Selection and Development Guidelines:

- Siting criteria depend on the types of facilities proposed.
- Prior to the development of any specialized recreation facility, such as a pool, recreation center, sports complex, etc., the City will prepare a detailed cost/benefit analysis and maintenance impact statement.
- Size will depend upon the facilities to be provided.
- Site should front on a public street.
- Parking Requirements: Depends on facilities provided.

Special Use Areas Facilities and Amenities to Consider:

- Facilities and amenities will depend on the proposed activities and site use.

Linear Parks

Linear Parks Description:

- Linear parks are developed or landscaped areas and other lands that follow linear corridors such as railroad rights-of-way, creeks, canals, power lines, and other elongated features. This type of park usually contains path/trails, landscaped areas, viewpoints, and seating areas. Activities are generally passive in nature, such as walking, biking, wildlife watching, etc.
- Typical linear park users:
 - May come from throughout the city (depends on site).
 - Arrive by auto, bus, bicycle, or foot.
 - May visit the park for one (1) or more hours.

Linear Parks Site Selection and Development Guidelines:

- Linear parks should generally follow continuous special feature strips, with a minimum corridor width of fifty (50) to seventy-five (75) feet.
- Due to the shape, configuration, and potential for user noise in linear parks, user impacts on adjoining neighbors will be considered. Fences, walls, or landscaping may be used to provide some privacy for neighbors, but the provision of these features will consider user safety.
- Paved paths will be designed to accommodate maintenance and patrol vehicles.

PUBLIC FACILITIES ELEMENT

Linear Parks Facilities and Amenities to Consider:

- Paved paths
- Trails
- Landscaped areas
- Maintained natural vegetation
- Picnic tables
- Orientation and information signage
- Trailhead or entry/ kiosk
- Turf areas
- Ornamental plantings
- Fences, landscaping, or other features to control access near adjoining residential areas
- Viewpoints
- Seating areas
- On-street or off-street parking at trailheads. Amount depends on facilities and anticipated use of the path/trails

Linear Parks Facilities to Avoid:

- Active use areas (sport fields, paved courts, etc.)

Natural Open Space/Greenways

Natural Open Space/Greenways Description:

- Natural open space/greenways are publicly owned or controlled natural resources that are managed for conservation, environmental education, and passive recreational use, such as walking and nature viewing. This type of land may include wetlands, steep hillsides, or other similar spaces.
- Environmentally sensitive areas are considered open space and can include wildlife habitats, stream and creek corridors, or areas with unique and/or endangered plant species.
- Typical open space/greenway users:
 - Come from throughout the city.
 - Arrive by auto, bus, bicycle or foot.
 - Visit the park for one (1) or more hours.

Natural Open Space/Greenways Site Selection and Development Guidelines:

- Site size will be based on natural resource needs. Acreage will be sufficient to preserve or protect the resource.
- The City will consider alternative ways of preserving natural open space besides outright purchase, such as acquiring conservation easements, encouraging donations of land, land trades, etc.
- Emphasis for acquisition will be on lands offering unique features or have the potential to be lost to development.
- An analysis should be made to determine if unique qualities and conditions exist to warrant acquisition.
- Development and site improvements should be kept to a minimum, with the natural environment, interpretive and educational features emphasized.

PUBLIC FACILITIES ELEMENT

- Natural open space areas should be managed and maintained for a sense of solitude, separation, or environmental protection.
- Parking and site use should be limited to the numbers and types of visitors the area can accommodate while still retaining its natural character and the intended level of solitude.
- Where feasible, public access and use of these areas should be encouraged, but environmentally sensitive areas should be protected from overuse.

Natural Open Space/Greenways Facilities and Amenities to Consider:

- Interpretive signage
- Off-street parking if a trail is located within the site
- Picnic shelters
- Picnic areas
- Path and trail system
- Trailhead or entry/ kiosk
- Viewpoints or viewing blinds
- Interpretive or educational facilities

Natural Open Space/Greenways Facilities and Amenities to Avoid:

- Turf areas
- Ornamental plantings
- Active use areas

Recreation Path and Trails

Recreation Path and Trails Description:

- Recreation path, as described here, provide off-street bicycle and pedestrian links to parks, with recreation emphasized. These include paths within greenways and linear parks. Guidelines are not presented for on-street bikeways or accessways intended mainly for transportation.
- Typical trail and path users:
 - May come from throughout the city (depends on site).
 - Arrive by auto, bus, bicycle, or foot.

Recreation Path Site Selection:

- Non-motorized routes provide the following primary purposes: 1) recreation off street paths providing a recreation experience; or 2) non-motorized transportation links which may be identified in the *Medford Transportation System Plan*; 3) on-street bike lanes.
- The city will seek to develop non-motorized routes to provide linkages to parks, schools, and other destination points.
- Recreation paths will be located outside street rights-of-ways, or will be separated by traffic lanes by a generous landscaped separation.
- Where routes use street rights-of-way, the street should be designed to minimize potential conflicts between motorists and pedestrians and bicyclists.
- Paths that are within street rights-of-way but separated will be designed, when possible, along continuous features, so that they do not pose hazards when crossing driveways and intersections.
- If possible, path crossings by streets should occur at signalized intersections.
- Paths may need to utilize street rights-of-way in order to complete a segment link.

PUBLIC FACILITIES ELEMENT

- Since paths are so difficult to provide after an area has been developed, advanced detailed path planning for developing areas is essential.
- Developers should be encouraged to provide public paths through proposed developments, where such improvements would provide needed linkages between path/trail routes and access to public destinations.

Recreation Paths and Trails Facilities and Amenities to Consider:

- Staging areas for path/trail access
- Picnic sites
- Seating areas
- Trailhead or entry/ kiosk
- Interpretive signage
- Orientation and information signage
- Amenities should be site specific

Trail Guidelines:

- Trail alignments should take into account soil conditions, steep slopes, surface drainage and other physical limitations that could increase construction and/or maintenance costs.
- Trail alignments should avoid sensitive environmental areas such as wetlands, riparian vegetation, large trees, etc.
- Trails should be planned, sized, and designed for non-motorized multiple uses, developed to the standard necessary to minimize potential user conflicts.
- Centralized and effective staging areas should be provided for trail access. Trailheads should include parking, orientation and information, and any necessary specialized unloading features.
- Trails should be looped and interconnected to provide a variety of trail lengths and destinations. They should link various parts of the community, as well as existing park sites.
- Recreation trails should be interesting to the user and maximize the number and diversity of enjoyable viewing opportunities.
- Trails should be located and designed to provide a diversity of challenges. Enhance accessibility wherever possible.
- Linkages and trail location and orientation should encourage users to walk or bicycle to the trail, depending upon the expected and desired level of use.

CONCLUSIONS

The following are conclusions about the provision of parks, open space and leisure services in Medford drawn from public involvement activities, a community needs assessment, and analysis of existing facilities and operations. These conclusions provide a foundation for the Parks Goals, Policies, and Implementation Strategies.

1. Medford's population is growing rapidly and will continue to do so over the planning period of 2005 to 2030. This population increase is the primary reason for the increasing demands for parks and recreation services.
2. In the past, the City has shown great vision in acquiring and developing park and recreation facilities to meet the growing need. As Medford grows, the City will need to meet existing financial challenges in order to build new parks, facilities, and paths/trails and adequately maintain current ones.
3. Medford is a very active community, with higher measured recreation participation levels than the average of other Northwest cities surveyed. This level of participation would support an expansion of recreation programs and facilities to meet existing and future community needs.
4. The basic concept of the proposed park system is to assure that every neighborhood in Medford is served by a neighborhood or community park. Thirteen additional neighborhood parks and five community parks are needed to meet community needs in the years 2005-2030. Some of the facilities are not on the 2009 25-year Project List because the city will not support a park system development fee large enough to include all proposed park facilities.
5. Of all park and recreation services, surveyed residents mostly want the City to upgrade existing parks, provide more sports fields, and develop a city-wide path/trail system.
6. The City of Medford is a significant provider of recreational programs in the region. Programs and services need to be expanded in nearly all areas, especially for youth, teens, and seniors, to meet increasing community needs.
7. To increase program participation, recreation programs could be expanded in several areas identified by survey respondents, including arts and crafts, cultural arts, concerts, special events, and family activities.
8. Recreation programs are often subsidized by the City to keep programs affordable. According to the results of the survey, residents would like program subsidies to continue, particularly for youth and seniors. However, recreation programming must be more cost-effective.
9. Future park and recreation services in Medford must reflect the needs of a changing population. Medford has an above average and increasing proportion of senior citizens.
10. The City needs to replace the deteriorating swimming pools at Hawthorne Park and Jackson Park.
11. While Prescott Park is valued as a natural area, community residents want park access improved, with overlooks/viewpoints and trailheads developed at the site.

PUBLIC FACILITIES ELEMENT

12. Medford has several creek corridors that offer exceptional recreation and conservation opportunities.
13. By the year 2030, Medford will need an additional 15 miles of paved paths and 11 miles of trails. A system of recreational trails, paths, and bikeways would provide a safe place for walking, biking, and non-motorized transportation.
14. City of Medford General Fund, grants, and donations are the primary sources of funding for improvements, maintenance, and the expansion of facilities in existing parks.
15. An increase in the use of concessionaires in the City's parks would generate needed revenue for the park and recreation system, while providing user support services and business opportunities.
16. Parks System Development Charges (SDCs) are an important source of funding for the acquisition and development of new parks and open space areas. Since SDCs are paid by new residential development, the fees are meant to fund capacity enhancement projects. The City regularly updates its SDC methodology and increases the SDC rate for all housing units. SDC funds will be particularly important to fund new parkland in Southeast Medford, where the City is rapidly growing.

GOALS, POLICIES, AND IMPLEMENTATION STRATEGIES

The goals, planning policies, and implementation strategies listed below create a framework for the realization of the Parks Element and also will help measure its success.

Goal 1: To provide for a full range of recreational activities and opportunities to meet the needs of all residents of Medford.

Policy 1-A: The City of Medford shall use the Parks Element as a factual basis in the land use decision-making process.

Policy 1-B: The City of Medford shall recognize the social and economic value of other providers in the City and nearby county, state, and national recreation resources that provide recreation for Medford residents, create tourist expenditures within the City of Medford, and attract businesses and industries to the City.

Implementation 1-B (1): Provide park and recreation programs that complement nearby county, state, and national recreation resources.

Implementation 1-B (2): Pursue partnerships as a key means for leveraging community resources and minimizing duplications of effort.

Policy 1-C: The City of Medford shall be a primary provider of recreation programs and services community-wide.

Implementation 1-C (1): Provide park and recreation facilities to support community programming needs.

PUBLIC FACILITIES ELEMENT

Implementation 1-C (2): Expand the City's role as a primary provider of recreation programs and services and increase programming to meet changing demographics and growing community needs.

Implementation 1-C (3): Establish more revenue-generating programs to increase program funding to help fund or subsidize other programs and services.

Implementation 1-C (4): Provide a new water park to generate additional revenue and to meet a growing, community-wide demand for aquatic services.

Implementation 1-C (5): In the long-term, consider an indoor recreation center/aquatic facility to help meet future community needs for swimming, gymnasium, and programming space.

Implementation 1-C (6): Consider other financing approaches, including a general obligation bond, to fund the development of additional facilities and significant park upgrades.

Policy 1-D: The City of Medford shall provide park land and facilities conveniently located and economically accessible to all members of the community.

Implementation 1-D (1): Locate parks and facilities in underserved areas.

Implementation 1-D (2): Provide program services to all ages, abilities, and economic and cultural backgrounds.

Implementation 1-D (3): Offer programs at a range of costs (free, low-cost, full price) and implement other strategies to ensure program affordability, while meeting city financial goals.

Implementation 1-D (4): Implement the *Southeast Medford Area Plan Map* with regards to greenway paths/trails, parks, and recreation facilities.

Goal 2: *To preserve natural resources in the Medford Urban Growth Boundary that provide open space or have unique recreational potential, encouraging development with parks and recreation facilities if appropriate.*

Policy 2-A: The City of Medford shall emphasize acquiring park land having natural features or resources that need protection or are of significant interest to the public.

Implementation 2-A (1): The City should seek to acquire riparian corridors where feasible to protect these natural resources and to offer potential sites for path/trail development.

Implementation 2-A (2): Develop effective natural resource management plans for significant natural areas within parks and other City-owned or controlled lands, such as oak savanna, riparian areas, and wetlands, to identify management priorities and to guide acquisition, development, and restoration decisions.

PUBLIC FACILITIES ELEMENT

Policy 2-B: The City of Medford shall give special consideration to the Bear Creek corridor in order to protect this dynamic natural and recreational resource for the enjoyment of present and future generations.

Implementation 2-B (1): Directly and/or cooperatively acquire and plan appropriate park and recreation sites and public access along the Bear Creek corridor.

Policy 2-C: The City of Medford shall give special consideration to Prescott Park in order to protect this dynamic natural and recreational resource and most significant scenic view for the enjoyment of present and future generations.

Implementation 2-C (1): Follow the recommendations of the *Prescott Park Management Plan* and regularly update the *Plan*.

Implementation 2-C (2): Pursue land additions to Prescott Park when opportunities become available.

Implementation 2-C (3): Pursue inclusion of Prescott Park in the Medford Urban Growth Boundary for eventual inclusion within the City of Medford.

Implementation 2-C (4): Increase access and public enjoyment of Prescott Park by developing appropriate facilities to enhance appreciation of natural resources, the outdoors, and Medford's unique environment. Until included within the Medford Urban Growth Boundary, improvements within Prescott Park must comply with Jackson County land use regulations, as well as state rules and statutes, which may limit the extent of improvements on land outside of UGBs.

Goal 3: *To provide an interconnected park and recreation system that is well integrated with the community.*

Policy 3-A: The City of Medford shall seek to develop a major intra-community system of paths to provide linkages between parks, neighborhoods, community facilities, schools, and open space sites.

Implementation 3-A (1): Seek links to other transportation methods, such as developing parks along bus routes or encouraging bus transit to serve the parks.

Implementation 3-A (2): Develop a detailed path and trails plan to recommend routes for meeting future community needs for an additional fifteen miles of paths and 11 miles of trails by the year 2030.

Policy 3-B: The City of Medford shall seek to acquire natural and other corridors to link parks and open space throughout the community.

Implementation 3-B (1): Develop a long-range public open space plan that provides for an interconnected system of creek corridors, greenways, wetlands, and other significant natural resource areas.

PUBLIC FACILITIES ELEMENT

Implementation 3-B (2): Acquire missing links in corridors and parcels that are contiguous to other public open spaces to provide maximum benefits for recreation and wildlife.

Goal 4: *To coordinate park and recreation planning, acquisition, maintenance, and development in the City of Medford to serve a broad spectrum of citizen and institutional interests.*

Policy 4-A: The City of Medford shall design and maintain parks and recreation facilities in a safe, attractive manner, to serve as positive amenities for the community and the neighborhoods in which they are located.

Implementation 4-A (1): Adopt and utilize the *Guidelines for Site Selection and Development* in the acquisition and/or development of parks within each park classification.

Implementation 4-A (2): Implement a consistent park signage program for use throughout the system and install signage where needed.

Policy 4-B: The City of Medford shall evaluate and design park and recreation facilities to minimize operation and maintenance costs.

Implementation 4-B (1): Include projected maintenance costs in design proposals for parks and recreation facilities.

Implementation 4-B (2): Consider maintenance costs, including transportation and loading/unloading of equipment, before acquiring park sites smaller than one acre.

Policy 4-C: The City of Medford shall define and standardize maintenance procedures, including cost estimates for maintaining Medford parks, recreation facilities, and beautification areas.

Implementation 4-C (1): Allocate an average minimum maintenance cost per acre annually for maintenance of each park type and increase maintenance funds using this guideline as new parks are added to the City's system.

Implementation 4-C (2): Develop an Integrated Pest Management Plan to define use of herbicides and pesticides on City-owned or controlled properties.

Implementation 4-C (3): Develop a parks maintenance management plan that defines maintenance levels, performance standards, and budget allocation.

Policy 4-D: The City of Medford shall encourage joint acquisition and use of contiguous school and park sites for recreational purposes that are beneficial to both City and School agencies.

Policy 4-E: The City of Medford shall work with partner agencies, especially schools, to help meet demand for indoor and outdoor sports facilities.

Implementation 4-E (1): Develop and maintain inventories and evaluations of shared sports facilities.

PUBLIC FACILITIES ELEMENT

Implementation 4-E (2): Continue partnering with the school districts to ensure community access to school gymnasiums and other sports facilities.

Policy 4-F: The City of Medford shall allow compatible, revenue-producing concession facilities and services within parks that enhance visitor use and enjoyment of the City's parks.

Policy 4-G: The City of Medford shall have a parks planning process that implements the park uses described herein.

Implementation 4-G (1): Investigate development of objective land use and siting review criteria.

Goal 5: *To maintain and enhance community livability in Medford by promoting the aesthetic quality of the urban environment.*

Policy 5-A: The City of Medford shall recognize trees as valuable amenities that contribute to the livability of our city through the proper selection, placement, preservation and maintenance of trees along our streets, in open spaces, and in parks.

Implementation 5-A (1): Develop a tree protection ordinance for adoption by the City Council.

Implementation 5-A (2): Develop a street tree ordinance for adoption by the City Council.

Implementation 5-A (3): Provide a mechanism for a tree recognition program.

Policy 5-B: The City of Medford shall require the provision and continued maintenance of appropriate landscaping in conjunction with new development.

Policy 5-C: The City of Medford shall encourage the establishment of public art in parks, on public grounds, and in public buildings.

Implementation 5-C (1): Investigate mechanisms for displaying art in public places.

PUBLIC FACILITIES ELEMENT

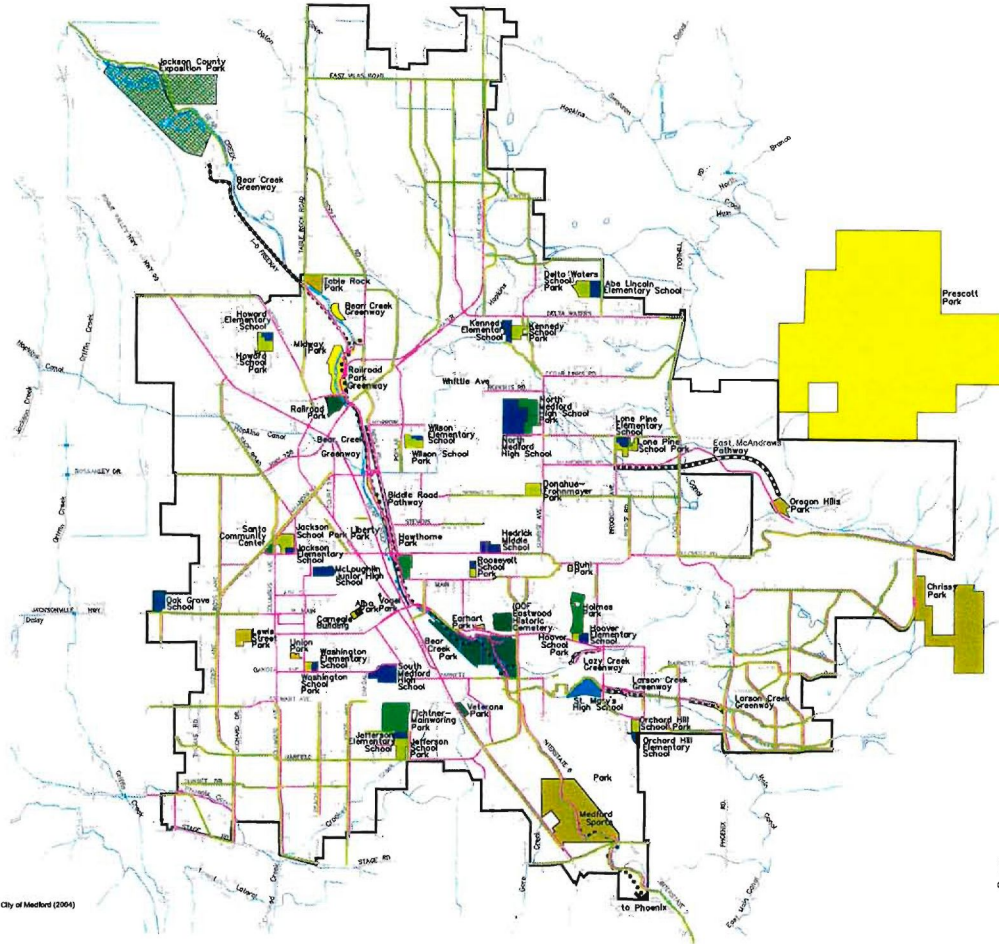
WORKS CITED:

Following is a list of documents that are referred to within this Parks Element. They are listed in the order that they appear in the Parks Element. These documents are available online at the website indicated. In addition, a copy is available at the City of Medford Planning Department, City Hall Lausmann Annex, 200 South Ivy Street, 2nd Floor, Medford, OR 97501.

1. Joint Powers Agreement with Jackson County Regarding Maintenance of the Bear Creek Greenway Path within the City's Urban Growth Boundary (www.ci.medford.or.us/Page.asp?NavID=2365)
2. Bear Creek Master Plan (www.ci.medford.or.us/Page.asp?NavID=1690)
3. HMT Complex, Field One "Artificial Surface" Usage Comparison (www.ci.medford.or.us/Page.asp?NavID=2365)
4. *2010 Parks & Recreation Artificial Turf Comparison to Natural Grass Fields* (www.ci.medford.or.us/Page.asp?NavID=2365)
5. Public Art Selection and Acquisition Policy (www.ci.medford.or.us/Page.asp?NavID=2121)
6. 25 Year Project List Adopted 1/19/06 (can be found in the 2006 Parks and Recreation System Development Charges Methodology Update - www.ci.medford.or.us/Page.asp?NavID=2365)
7. 2009 Updated Project List (can be found in the January 2009 Parks and Recreation System Development Charges Methodology Update – see #16 below)
8. Prescott Park Management Plan (www.ci.medford.or.us/Page.asp?NavID=2365)
9. Prescott Park Management Plan – 2008 Update (www.ci.medford.or.us/Page.asp?NavID=2365)
10. Aquatic Facility Planning Study, ORW Architecture and Councilman Hunsaker (www.ci.medford.or.us/Page.asp?NavID=2365)
11. REMI Northwest Feasibility Study (www.ci.medford.or.us/Page.asp?NavID=2365)
12. Medford Transportation System Plan (www.ci.medford.or.us/Page.asp?NavID=864)
13. Southeast Plan (www.ci.medford.or.us/Page.asp?NavID=1691)
14. Riparian Area Inventory and Assessment (www.ci.medford.or.us/Page.asp?NavID=870)
15. January 2009 Parks and Recreation System Development Charges Methodology Update (www.ci.medford.or.us/Page.asp?NavID=2365)

PUBLIC FACILITIES ELEMENT

Parks & Recreation Figure 1- Existing Park & Recreation Resources



Base data provided by the City of Medford (2004)

LEGEND

- Urban Growth Boundary
- Public Schools
- Private Schools
- Neighborhood Parks
- Community Parks
- Linear Parks
- Greenways/ Open Space
- Special Use Areas
- Undeveloped Areas
- Large Urban Parks
- Mini Parks
- Existing pedestrian/bike path

KEY

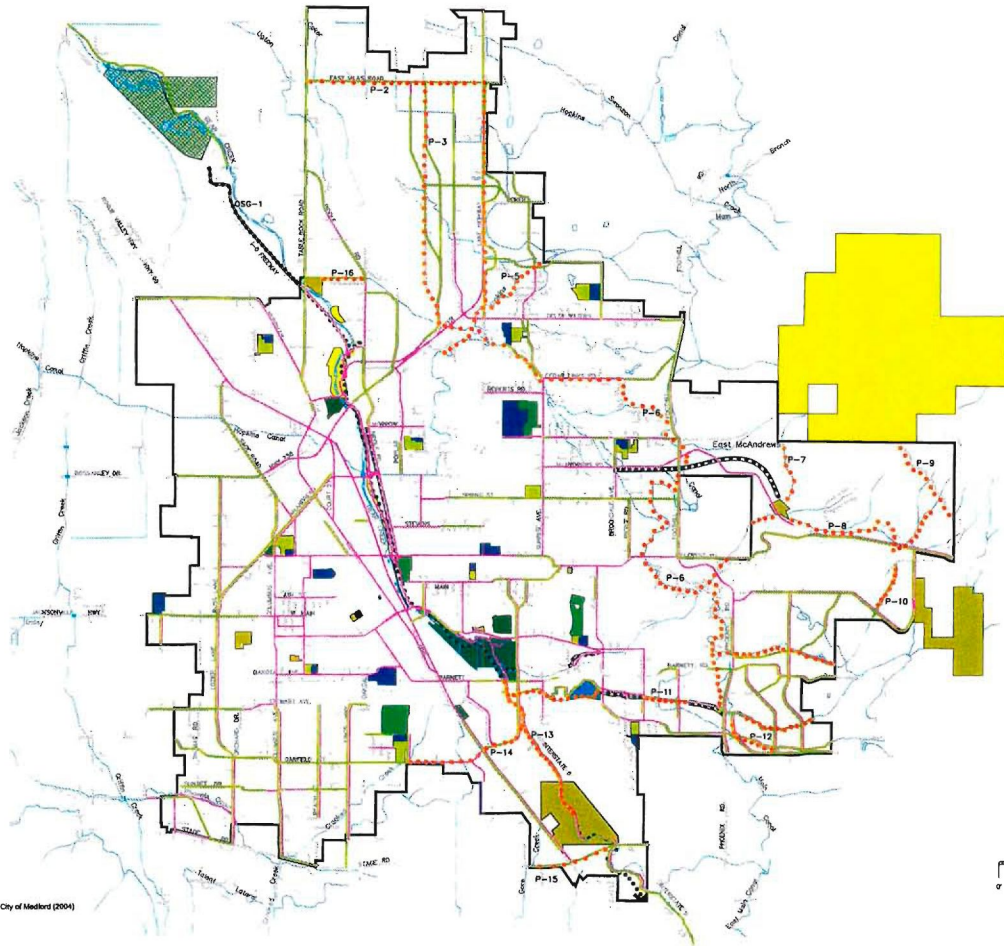
- Planned sidewalk as part of road improvement projects
- Planned/proposed bike lanes
- Proposed pedestrian/bike path



Oct 2010

PUBLIC FACILITIES ELEMENT

Parks & Recreation Figure 2- Path and Trails Plan



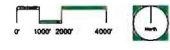
Base data provided by the City of Medford (2004)

LEGEND

- Urban Growth Boundary
- Public Schools
- Private Schools
- Neighborhood Parks
- Community Parks
- Linear Parks
- Greenways/ Open Space
- Special Use Areas
- Undeveloped Areas
- Large Urban Parks
- Mini Parks
- Recreation Land (outside UGB)
- Existing pedestrian/bike path

KEY

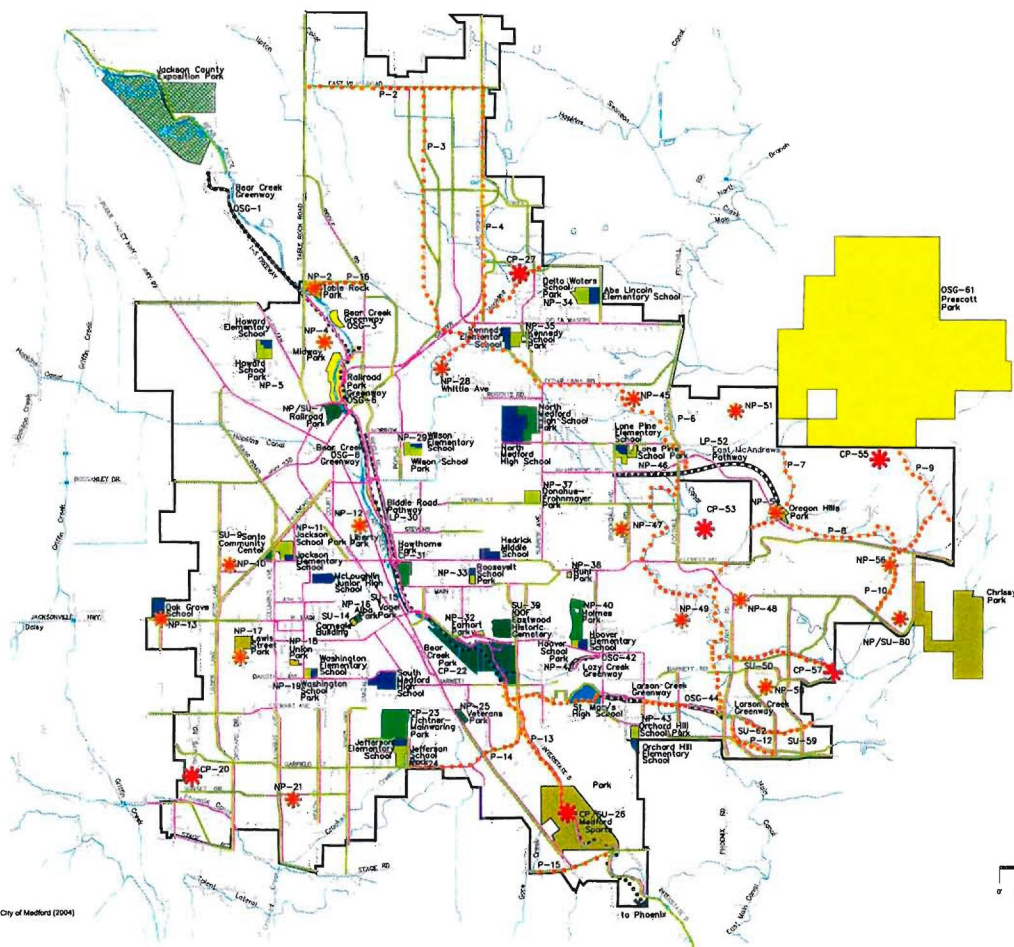
- Planned sidewalk as part of road improvement projects
- Planned/proposed bike lanes
- Proposed pedestrian/bike path



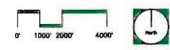
Oct 2010

PUBLIC FACILITIES ELEMENT

Parks & Recreation Figure 3- Facilities Plan



Base data provided by the City of Madford (2004)



Oct 2010

LEGEND

- Urban Growth Boundary
- Public Schools
- Private Schools
- Neighborhood Parks
- Community Parks
- Linear Parks
- Greenways/ Open Space
- Special Use Areas
- Undeveloped Areas
- Large Urban Parks
- Mini Parks
- Recreation Land (outside UGB)
- Existing pedestrian/bike path

KEY

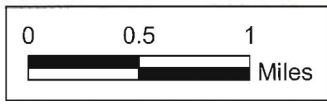
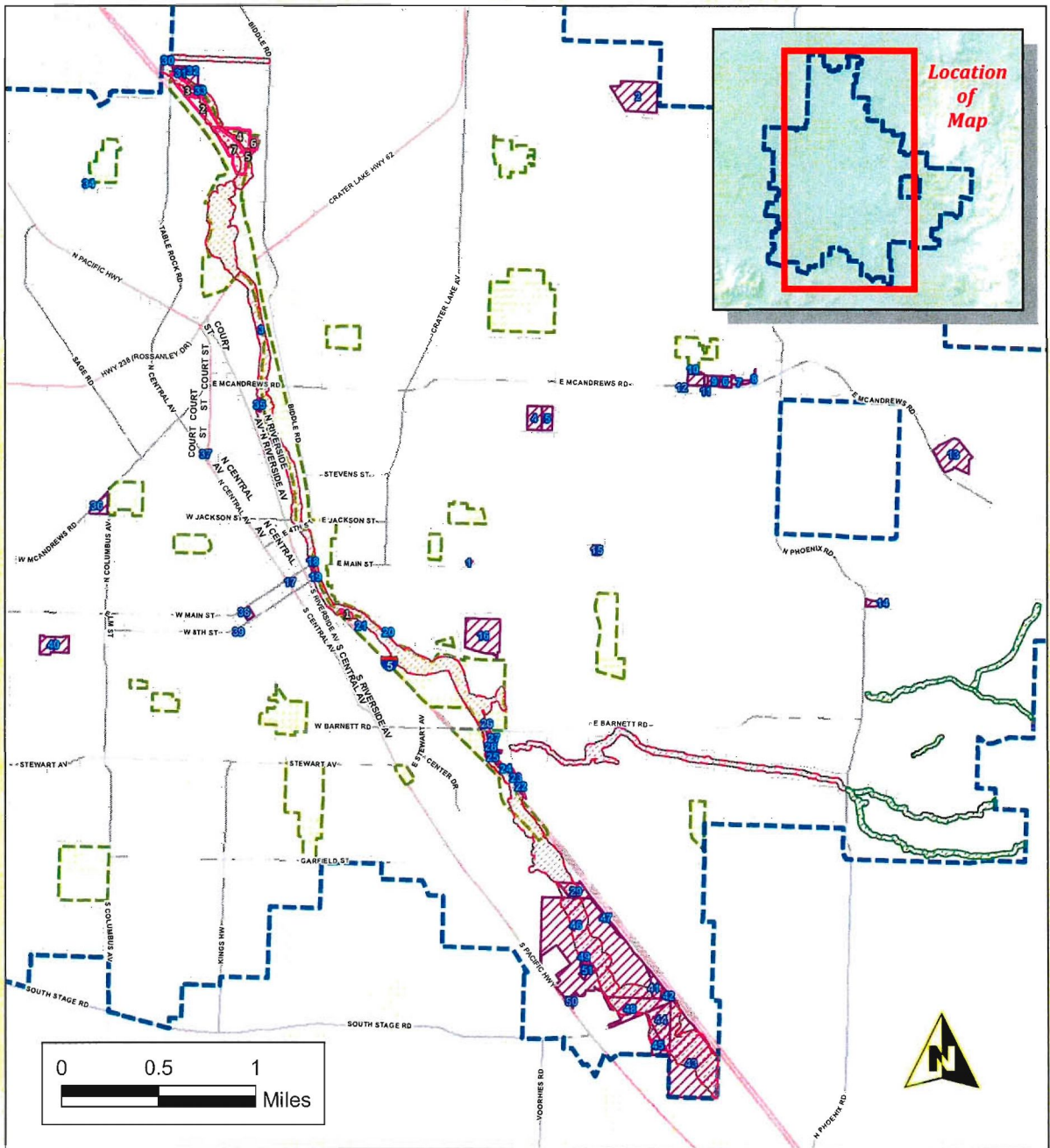
- Planned sidewalk as part of road improvement projects
- Planned/proposed bike lanes
- Proposed pedestrian/bike path

Proposed Community Park

Proposed Neighborhood Park







Parks & Schools GLUP Map Amendment

Proposed Taxlots Addition to Parks & Schools GLUP



General Land Use Plan (GLUP) Amendment Proposal

**L
E
G
E
N
D**

-  Proposed Addition to Parks/Schools GLUP (with labeled blue ID)
-  Existing Greenway GLUP - see Code Section 10.384
-  Proposed Greenway GLUP - see Code Sections 10.920-10.928
-  Proposed Removal from Parks/Schools GLUP (with labeled pink ID)
-  Existing Parks/Schools GLUP
-  Urban Growth Boundary

File #
**CP-10-001/
GLUP-10-002**



CITY OF MEDFORD
EXHIBIT # **A-2/4**
File # **CP-10-001/6LUP-10-002** Date: **10.14.10**

PROPOSED TAXLOTS ADDITION TO PARKS SCHOOLS GLUP - CP-10-001/GLUP-10-002

August 30, 2010

| MAP ID | NAME OF PARK/SCHOOL FACILITY | MAPLOT | FEEOWNER | ACRES | CURRENT GLUP DESIGNATION | PROPOSED GLUP DESIGNATION |
|--------|---------------------------------|--------------|------------------------------|-------|--------------------------|---------------------------|
| 1 | E. Main Street Green | n/a | RIGHT OF WAY | 0.27 | n/a | PS |
| 2 | Delta Waters School Park | 371W081400 | MEDFORD SCHOOL DISTRICT 549C | 19.75 | UR | PS |
| 3 | Bear Creek Greenway | 371W19BB3300 | MEDFORD CITY OF | 0.13 | CM | PS |
| 4 | Donahue-Frohnmayr Park | 371W20BD2101 | CITY OF MEDFORD | 5.83 | UH | PS |
| 5 | Donahue-Frohnmayr Park | 371W20BD2200 | CITY OF MEDFORD | 4.29 | UR | PS |
| 6 | E. McAndrews Pathway | 371W21BA1101 | MEDFORD CITY OF | 2.20 | UH | PS |
| 7 | E. McAndrews Pathway | 371W21BA1200 | MEDFORD CITY OF | 1.11 | UR | PS |
| 8 | E. McAndrews Pathway | 371W21BA1300 | MEDFORD CITY OF | 0.81 | UR | PS |
| 9 | E. McAndrews Pathway | 371W21BA502 | MEDFORD CITY OF | 2.02 | UH | PS |
| 10 | E. McAndrews Pathway | 371W21BA503 | MEDFORD CITY OF | 0.48 | UH | PS |
| 11 | E. McAndrews Pathway | 371W21BB2803 | MEDFORD CITY OF | 0.62 | UH | PS |
| 12 | E. McAndrews Pathway | 371W21BB2804 | MEDFORD CITY OF | 3.19 | UH | PS |
| 13 | Oregon Hills Park | 371W22216 | MEDFORD CITY OF | 14.91 | UR | PS |
| 14 | Summerfield Park | 371W27BC4000 | MEDFORD CITY OF | 1.56 | UR | PS |
| 15 | Ruhl Park | 371W29AB9400 | MEDFORD CITY OF | 1.22 | UR | PS |
| 16 | IOOF Eastwood Historic Cemetary | 371W29C1800 | MEDFORD CITY OF | 19.32 | UR | PS |
| 17 | Vogel Plaza | 371W30BC5500 | MEDFORD CITY OF | 0.24 | CC | PS |
| 18 | Bear Creek Greenway | 371W30BD5100 | MEDFORD CITY OF | 0.22 | CC | PS |
| 19 | Bear Creek Greenway | 371W30BD6500 | MEDFORD CITY OF | 0.10 | CC | PS |
| 20 | Bear Creek Park | 371W30DB1700 | MEDFORD CITY OF | 0.18 | UH | PS |
| 21 | Bear Creek Park | 371W30DB3100 | MEDFORD CITY OF | 0.13 | SC | PS |
| 22 | Bear Creek Greenway | 371W32B3602 | JACKSON COUNTY | 1.31 | UR | PS |
| 23 | Bear Creek Greenway | 371W32BA2501 | JACKSON COUNTY | 0.46 | UR | PS |
| 24 | Bear Creek Greenway | 371W32BA2701 | JACKSON COUNTY | 0.39 | UR | PS |
| 25 | Bear Creek Greenway | 371W32BA3001 | JACKSON COUNTY | 1.55 | UR | PS |

CITY OF MEDFORD
 EXHIBIT # A-3/4
 File # CP-10-001/GLUP-10-002

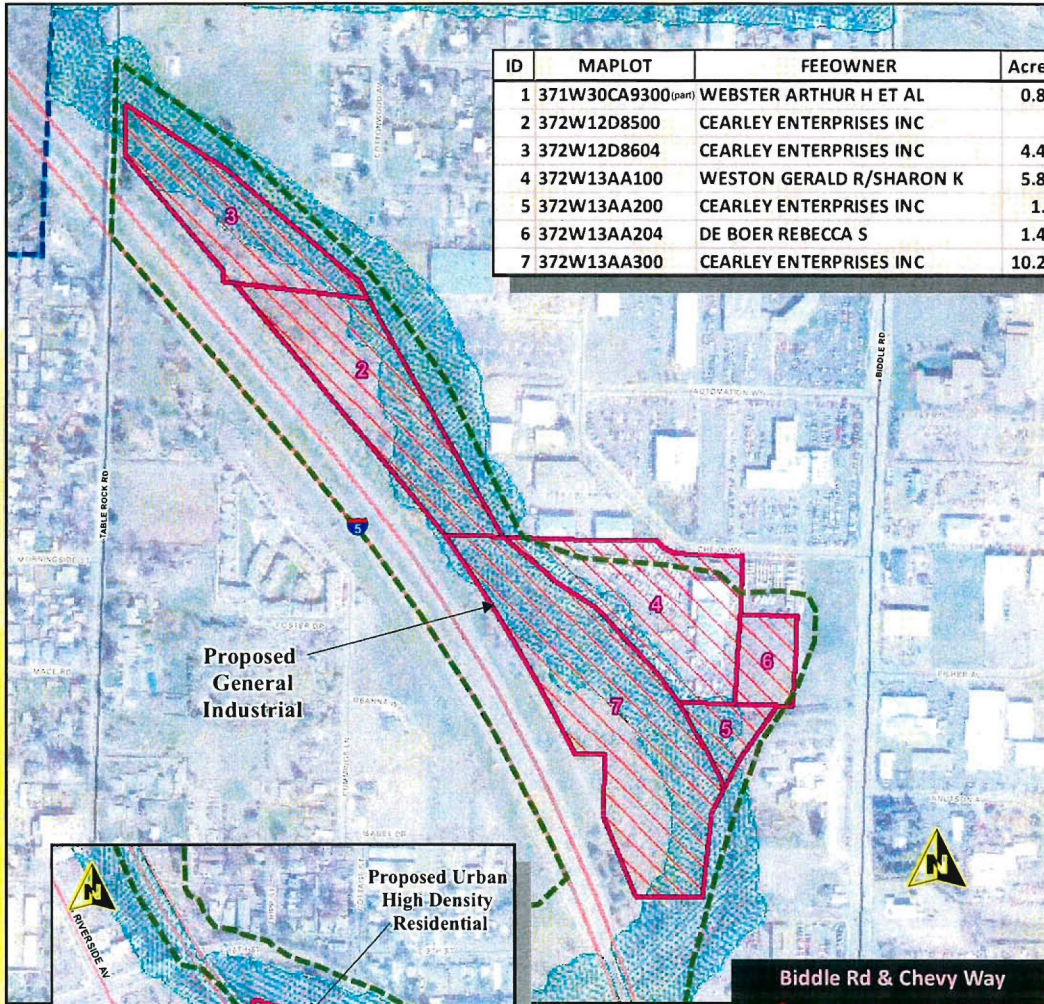
PROPOSED TAXLOTS ADDITION TO PARKS SCHOOLS GLUP - CP-10-001/GLUP-10-002

August 30, 2010

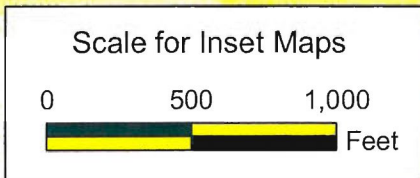
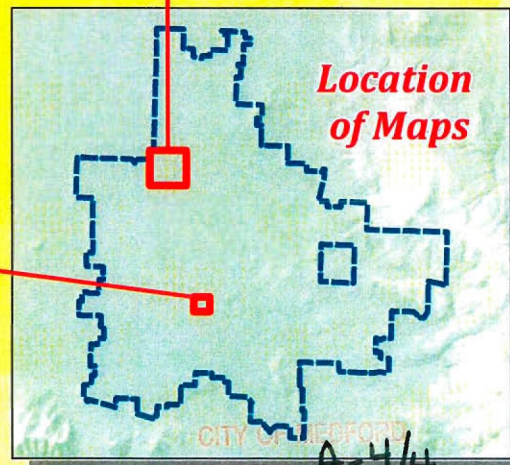
| ID | NAME OF PARK/SCHOOL FACILITY | MAPLOT | FEEOWNER | ACRES | CURRENT GLUP DESIGNATION | PROPOSED GLUP DESIGNATION |
|-----------|-------------------------------------|---------------|----------------------------|---------------|---------------------------------|----------------------------------|
| 26 | Bear Creek Greenway | 371W32BA3401 | JACKSON COUNTY | 0.20 | CM | PS |
| 27 | Bear Creek Greenway | 371W32BA3500 | JACKSON COUNTY | 0.57 | CM | PS |
| 28 | Bear Creek Greenway | 371W32BA3600 | MEDFORD CITY OF | 0.47 | CM | PS |
| 29 | Bear Creek Greenway | 371W32D606 | JACKSON COUNTY | 5.73 | UR | PS |
| 30 | Bear Creek Greenway | 372W12C805 | JACKSON COUNTY COURT HOUSE | 0.47 | UR | PS |
| 31 | Table Rock Park | 372W12D1001 | CITY OF MEDFORD | 2.25 | GI | PS |
| 32 | Table Rock Park | 372W12D1002 | CITY OF MEDFORD | 4.39 | GI | PS |
| 33 | Bear Creek Greenway | 372W12D5100 | MEDFORD CITY OF | 0.81 | GI | PS |
| 34 | Howard School Park | 372W13BC1601 | MEDFORD CITY OF | 0.38 | UR | PS |
| 35 | Bear Creek Greenway | 372W24AD8200 | MEDFORD CITY OF | 0.73 | CM | PS |
| 36 | Santo Community Center | 372W24CC3100 | MEDFORD CITY OF | 3.80 | UR | PS |
| 37 | Court St. Beautification Area | 372W24DB2200 | MEDFORD CITY OF | 0.30 | CM | PS |
| 38 | Alba Park | 372W25AD11900 | MEDFORD CITY OF | 1.49 | CC | PS |
| 39 | Mayor's Fountain | 372W25DA3500 | MEDFORD CITY OF | 0.29 | CC | PS |
| 40 | Lewis Park | 372W26DA2000 | MEDFORD CITY OF | 8.14 | UH | PS |
| 41 | US Cellular Community Park | 381W04201 | CITY OF MEDFORD | 3.87 | CM | PS |
| 42 | Bear Creek Greenway | 381W04202 | JACKSON COUNTY | 1.19 | CM | PS |
| 43 | Bear Creek Greenway | 381W04301 | JACKSON COUNTY | 57.82 | CM | PS |
| 44 | Bear Creek Greenway | 381W04C100 | JACKSON COUNTY | 11.28 | CM | PS |
| 45 | US Cellular Community Park | 381W04C200 | CITY OF MEDFORD | 5.16 | UR | PS |
| 46 | US Cellular Community Park | 381W05106 | CITY OF MEDFORD | 123.55 | CM | PS |
| 47 | US Cellular Community Park | 381W05107 | CITY OF MEDFORD | 1.29 | CM | PS |
| 48 | Bear Creek Greenway | 381W05601 | JACKSON COUNTY | 15.99 | CM | PS |
| 49 | US Cellular Community Park | 381W05A100 | CITY OF MEDFORD | 1.00 | CM | PS |
| 50 | US Cellular Community Park | 381W05A1100 | CITY OF MEDFORD | 0.63 | CM | PS |
| 51 | US Cellular Community Park | 381W05A200 | CITY OF MEDFORD | 2.64 | CM | PS |
| | | | TOTAL ACRES = | 333.45 | | |

Parks & Schools GLUP Map Amendment

Proposed Taxlots Removed from Parks & Schools GLUP



| ID | MAPLOT | FEOWNER | Acres |
|----|---------------------|--------------------------|-------|
| 1 | 371W30CA9300 (part) | WEBSTER ARTHUR H ET AL | 0.85 |
| 2 | 372W12D8500 | CEARLEY ENTERPRISES INC | 6 |
| 3 | 372W12D8604 | CEARLEY ENTERPRISES INC | 4.48 |
| 4 | 372W13AA100 | WESTON GERALD R/SHARON K | 5.83 |
| 5 | 372W13AA200 | CEARLEY ENTERPRISES INC | 1.1 |
| 6 | 372W13AA204 | DE BOER REBECCA S | 1.44 |
| 7 | 372W13AA300 | CEARLEY ENTERPRISES INC | 10.28 |



LEGEND

- Proposed Taxlot Removal from Parks GLUP (with labeled ID)
- Existing Parks/Schools GLUP
- Existing Riparian Corridor
- Urban Growth Boundary

File # CP-10-001/
GLUP-10-002



Date: 8.30.10

EXHIBIT # A-4/4
File # CP-10-001/6/PLUP-10-002

Praline M. McCormack

From: Moore, Ed W [ed.w.moore@state.or.us]
Sent: Friday, September 03, 2010 10:34 AM
To: Praline M. McCormack
Cc: Punton, Amanda; Ed Moore
Subject: CP-10-001 and GLUP-10-002, DLCD PAPA 016-10

Praline,

As we discussed on the phone, I have reviewed the above PAPA for the Medford Comprehensive Plan to update the parks and recreation portion of the Public Facilities Element to incorporate the 2006 Parks, Recreation and Leisure Services Plan (PRLSP). It is my understanding that the PRLSP was approved by the Medford Parks and Recreation Commission back in 2006 and forwarded to City Council for adoption. This PAPA represents the process through which the City Council will consider adopting the PRLSP and incorporating its recommendations into the City's comprehensive plan.

After reviewing the material provided with the proposed PAPA submittal to the department against the currently adopted Parks and Recreation Section of the Public Facilities Element of the Medford Comprehensive Plan, the Department has several concerns with the proposal that need to be addressed:

1. The PRLSP includes parks and trails that are located outside of the City's UGB and outside the existing Comprehensive Plan planning area. Is it the City's intent to expand the planning area of the comprehensive plan to include these facilities beyond the UGB?
2. Since the PRLSP extends beyond the Medford UGB and appears to be outside the scope of the City/County Urban Growth Management Agreement (UGMA), how has Jackson County been involved in the adoption process to-date? Is the County going to co-adopt those aspects of the PRLSP into the County's comprehensive plan that are outside Medford's UGB and beyond the scope of the UGMA? DLCD has not received a proposed post acknowledgement plan amendment notice from Jackson County. Unless Jackson County co-adopts those portions of the PRLSP that are outside Medford's UGB, adoption of the PRLSP would violate Goal 2 which states that "Each plan and related implementation measure shall be coordinated with the plans of affected governmental units."
3. Page 4 of the PRLSP identifies 2 standards for trail construction, but Figure 2 does not distinguish which trails are built to which standard. From the discussion in the PRLSP, one of the trail standards could be considered "urban" by design (10-foot paved) and the other "rural" (Mountain bike). Figure 2 needs to be amended to distinguish between trails that will be built to urban standards and those that will be built to rural standard.
4. The PRLSP proposal provides urban level services outside the Medford UGB and states that it would be the City's intent in implementing the PRLSP and seek land outside the UGB for new park sites "where large parcels are not available or where land cost are prohibitive"(Page 11). In fact, Figure 3 shows proposed community park in Prescott Park (outside the UGB on resource zoned land) and a future neighborhood park in Chrissy Park, also located outside the UGB. The provision of parks to serve urban population must be provided within the Medford UGB to be consistent with Goal 14. In order to implement the recommendations of the PRLSP for Prescott and Chrissy parks, the UGB will need to be expanded to bring them inside the UGB.

Aside from the above, the proposed PRLSP appears to be very comprehensive in its dealing with the park, recreation and leisure services needs of Medford. Please place this e-mail in the record of all proceedings for this plan amendment. Please feel free to contact me should you need additional clarification regarding our concerns.

Respectfully,

CITY OF MEDFORD
 EXHIBIT # B
 File # CP-10-001/6LUP-10-002

10/11/2010

Ed

Ed Moore, AICP | Regional Representative
Community Services Division
Dept. Land Conservation and Development

South Willamette Valley Office

644 A Street | Springfield, OR 97478

Southern Oregon Office

155 N First Street | Central Point, OR 97502

Voice: 971.239.9453 | Fax: 541.726.2509

ed.w.moore@state.or.us | www.oregon.gov/LCD/

Motion: Forward a favorable recommendation to the City Council for approval of TF-10-052 per the Revised Staff Report dated September 2, 2010, including Exhibits A through E.

Moved by: Commissioner Shean Seconded by: Commissioner Potter

Roll Call Vote: Motion passed, 8 - 0

- * 50.4 CP-10-001/CP-10-002 Consideration of a Class "A" Major Legislative Comprehensive Plan Amendment proposal to replace the Parks, Recreation, and Leisure Services section of the Public Facilities Element, adopt the 2006 Parks, Recreation and Leisure Services Plan into the Comprehensive Plan by reference, amend the General Land Use Plan (GLUP) Map by adding new Parks/Schools, apply the Greenway designation to existing Riparian Corridors, and correct mapping errors by removing the Parks/Schools designation from several privately-owned parcels. City of Medford, Applicant

Praline McCormack, Planner II, presented a staff report. There were two additional handouts, a letter received on September 3, 2010, from DLCD and a memo from Pete Young, City of Medford Parks Department. Staff recommended forwarding a favorable recommendation to the City Council.

Commissioner McFadden asked what property owners would have to do to if they wanted to change their GLUP designation in the future. Ms. McCormack responded that it would require a Comprehensive Plan Map Amendment to change the designation.

There was discussion on amending the UGB to include Chrissy Park and Prescott Park. Ms. Petrou reported that they would not propose a UGB amendment just for the parks; the intent is that when the UGB amendment is done it will include the parks. There was discussion on the concerns that it could hold up the UGB amendment. Ms. Petrou noted that staff will discuss the issue with the new local DLCD representative.

Commissioner Tull asked why remove the parks designation on the proposed parcels. Ms. McCormack responded that the parcels are not parks or schools. It is a correction to a mapping error. Commissioner Tull asked if it was related to developing Bear Creek. Ms. McCormack responded that it was not.

Commissioner McFadden indicated that he has seen different language for trails and paths scattered throughout the Land Development Code. He would like them to be gathered into a more concise location in the code.

Pete Young, Parks and Recreation Department, commended Ms. McCormack for her work on the amendment.

The public hearing was opened and no testimony was given. The public hearing was closed.

Commissioner Tull commented that Ms. McCormack spoke to the issues raised in DLCD's letter.

Motion: Forward a favorable recommendation to City Council for approval of CP-10-001 & GLUP-10-002, as per the Staff Report dated August 31, 2010, including Exhibits A through P with the following changes: 1) Amend figures 2 and 3 to remove trails that are not located in proposed Urban Reserve areas; 2) Correct references to trails and paths as necessary; and 3) Add language regarding trail and path standards.

Moved by: Commissioner Tull Seconded by: Commissioner Shean

Commissioner Jackle conveyed that Chrissy Park, Prescott Park, and any other pathway, greenway, or other park amenity can be included on the Parks Plan in spite of the fact they are not in the City or the UGB with the notation that they are on the Parks Plan and will become city parks to the extent they are ultimately brought into the UGB and the City. Ms. Petrou responded that they would be talking to the local DLCD rep to see what it takes to get this acknowledged.

EXHIBIT # C
File # CP-10-001/GLUP-10-002

Commissioner Locke indicated that he was very concerned that the City does not have an eradication policy in place for parasitic plants, especially Mistletoe. Infestations are concentrated primarily among established oak trees, creating on-going destruction of the host trees. It is short-sighted to the point of being shameful that the City is not actively engaged in protecting its legacy oaks.

Commissioner Tull asked why we should not initiate a UGB expansion for only Chrissy and Prescott Parks. Ms. Petrou noted that right now it was not something that was important enough to take staff away from their current tasks. Commissioner Nelson clarified that the motion was to include Ms. McCormack's changes.

Roll Call Vote: Motion passed, 9 – 0

60. Report of Citizens Planning Advisory Committee. None

70. Report of the Site Plan and Architectural Commission.

70.1 Commissioner Entenmann reported that the Commission approved the Great Harvest Bakery application at the meeting of September 3, 2010.

80. Report of the Joint Transportation Subcommittee. None

90. Report of the Southeast Plan Implementation Advisory Committee.

90.1 Commissioner Tull reported that the Committee met on September 8, 2010, and discussed further planning done for Master Plan development commercial core area, particularly about how to facilitate the planning for the Riparian Area, the north portion of the commercial core, and how to resolve some of the property owner issues as it presently stands.

100. Report of the Planning Department.

100.1 Bianca Petrou reported that Staff spoke to the City Council about the Housing Element during a recent study session. It is scheduled for a public hearing on October 7, 2010. At the last City Council meeting, the property line adjustment code amendment was approved, along with the Meadows Lane UGB mapping correction. Ms. Petrou reported that the study session scheduled for Monday, September 13 has been cancelled. She noted that the terms for Commissioners Hokanson, Nelson, and Tull will expire this January. They will receive a letter from the City Manager's office this month. An open house on the Riparian Corridor will be held on Tuesday September 21, 2010, at the Santo Center.

Commissioner Tull asked if there was dialogue between Jackson County and the City on street development. Ms. Petrou responded that there were ongoing discussions, and they are working toward not having it hold up the Regional Problem Solving process.

110. Messages and Papers from Chair of Planning Commission. None

120. Remarks from the City Attorney. None

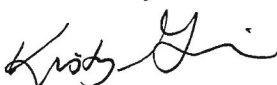
130. Propositions and Remarks from the Commission.

130.1

140. Adjournment.

140.1 The meeting was adjourned at 6:45 p.m. The proceedings of this meeting were digitally recorded and are filed in the City Recorder's office.

Submitted by:

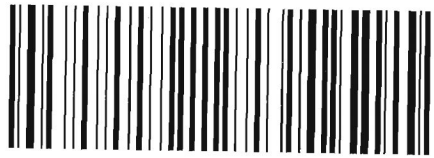


Kristy Grieve
Recording Secretary



Norman Nelson
Planning Commission Chair

Approved: September 23, 2010



7007 0710 0001 0567 1749

City Of Medford
Planning Department
200 South Ivy Street
Medford, OR 97501

ATTN: Plan Amendment Specialist
Dept. of Land Conser. & Develop.
635 Capitol St. NE, Ste. 150
Salem, Or 97301-2540



Hasler

016H26507632

\$07.17⁰

11/18/2010

Mailed From 97501
US POSTAGE

RETURN RECEIPT
REQUESTED