



Sitgreaves Communities Wildfire Protection Plan Update 2009

Prepared for:

**Navajo County, Coconino County, City of Show Low,
Town of Pinetop-Lakeside**

Sitgreaves Communities Wildfire Protection Plan

TABLE OF CONTENTS

Plan Background.....	3
Progress Update.....	4
Table Summaries and Maps	
Ownership and Treatment Summary.....	5
Surface Land Management Map.....	6
2009 Comprehensive Fuel Treatment Map.....	7
Comprehensive Fuel Treatment Map.....	8
USDA Apache-Sitgreaves National Forests Fuel Treatment Summary.....	9
USDA Apache-Sitgreaves National Forests 2009 Fuel Treatment Map.....	10
USDA Apache-Sitgreaves National Forests Comprehensive Fuel Treatment Map....	11
White Mountain Apache Tribal Lands Fuel Treatment Summary.....	12
White Mountain Apache Tribal Lands 2009 Fuel Treatment Map.....	13
White Mountain Apache Tribal Lands Comprehensive Fuel Treatment Map.....	14
City of Show Low Fuel Treatment Summary.....	15
City of Show Low 2009 Fuel Treatment Map.....	16
City of Show Low Comprehensive Fuel Treatment Map.....	17
Town of Pinetop-Lakeside Fuel Treatment Summary.....	18
Town of Pinetop-Lakeside 2009 Fuel Treatment Map.....	19
Town of Pinetop-Lakeside Comprehensive Fuel Treatment Map.....	20
Heber-Overgaard Fuel Treatment Summary.....	21
Heber-Overgaard Fuel 2009 Treatment Map.....	22
Heber-Overgaard Comprehensive Fuel Treatment Map.....	23
Navajo County Unincorporated Areas Fuel Treatment Summary	24
Coconino County (Forest Lakes) Fuel Treatment Summary.....	25
Coconino County (Forest Lakes) 2009 Fuel Treatment Map.....	26
Coconino County (Forest Lakes) Comprehensive Fuel Treatment Map.....	27
Coconino County (Forest Lakes) Private Land Hazard Assessment Map.....	28
Acknowledgements	29

Plan Background

The Sitgreaves Communities Wildfire Protection Plan (SCWPP), born out of the ashes of the Rodeo-Chediski Fire, was finalized and signed by 18 signatories in 2004. The stakeholders financially supporting the plan are Navajo County, Coconino County, the City of Show Low, and the Town of Pinetop-Lakeside. Other supporters are the University of Arizona, Navajo County Cooperative Extension; Apache-Sitgreaves National Forests; the White Mountain Apache Tribe; the Fort Apache Agency Bureau of Indian Affairs; the Arizona State Land Department; and the following fire departments: White Mountain Apache Tribe, Pinetop, Lakeside, Show Low, Linden, Clay Springs-Pinedale, Heber-Overgaard, and Forest Lakes. Apache County also signed the plan originally, and has since developed its own plan to address fire risk issues within the county.

The plan was developed in accordance with the Healthy Forest Restoration Act of 2003, on the heels of six severe fires in our area during the previous nine years in which over 500,000 acres burned. These large fires threatened and greatly impacted all of the communities in the White Mountain region. The impacts included the destruction of over 400 residences and out-buildings, the evacuation of over 25,000 residents and visitors, and a price tag of over \$312 million dollars in suppression and associated costs.

The SCWPP identifies needed fuel reduction forest treatments across jurisdictional boundaries of private lands, the Apache-Sitgreaves National Forests, and Fort Apache tribal lands. These seamless treatments are providing cumulative improvements in fire risk mitigation.

Progress Update

Highlights in 2009

This document is an update and cumulative progress report of the work accomplished since the Sitgreaves Communities Wildfire Protection Plan was adopted.

90,545 acres of land have been treated within the plan area.

5,238 acres of private property have been treated on 2,975 parcels.

6,629 parcels have been assessed.

\$1,000,000 in grant funds has been awarded for fire mitigation work in the plan area in 2009.

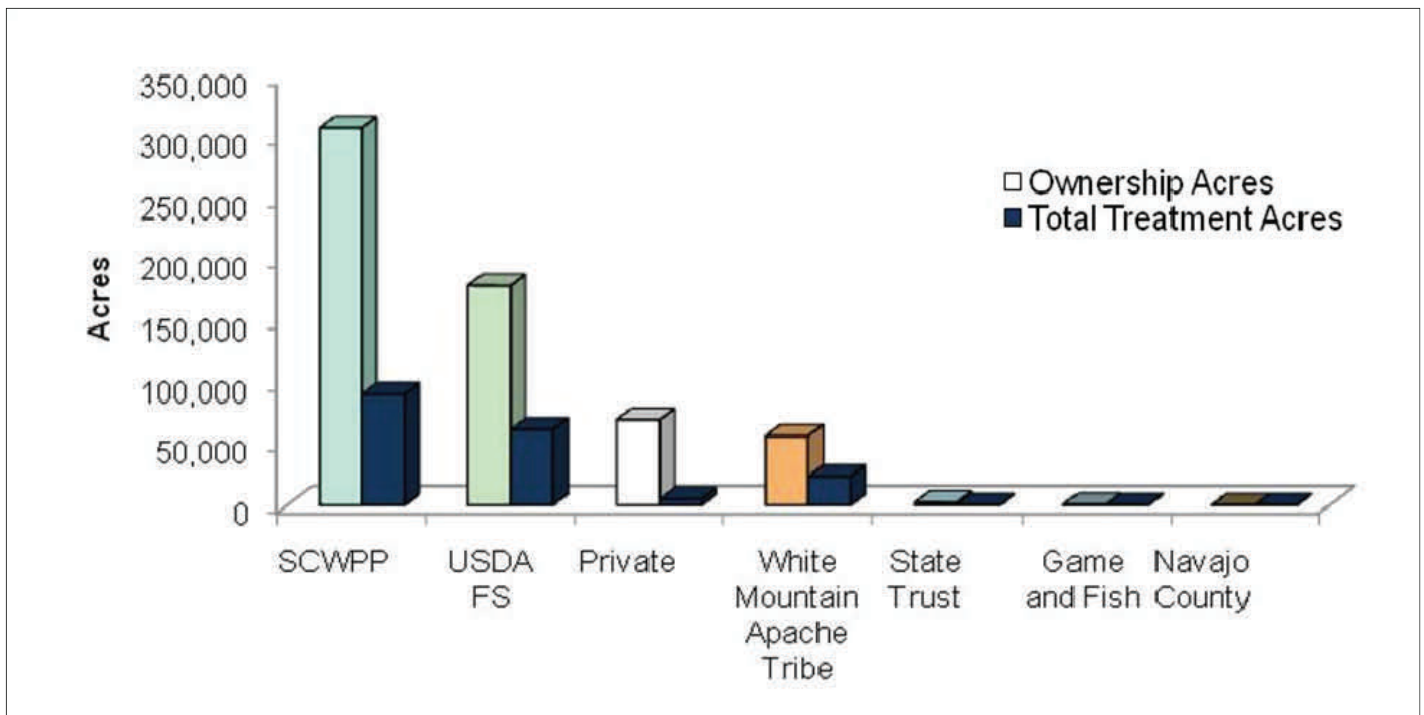
Maintenance of previously treated areas and new treatments are being addressed with a cooperative initiative between the City of Show Low, Homeowners Association Management Company (HOAMCO), Arizona Division of Forestry, and the University of Arizona Cooperative Extension.

Private Land Assessment Methodology

Assessments are based on the National Fire Protection Association (NFPA) 1144 Home Hazard Assessment. They include the FIREWISE Communities USA three-zone survivable space concept. The cumulative risk score for each parcel (low, moderate, or high) is determined by the average of the three zones and the structure hazard values assigned by the assessor.

Ownership and Treatment Summary

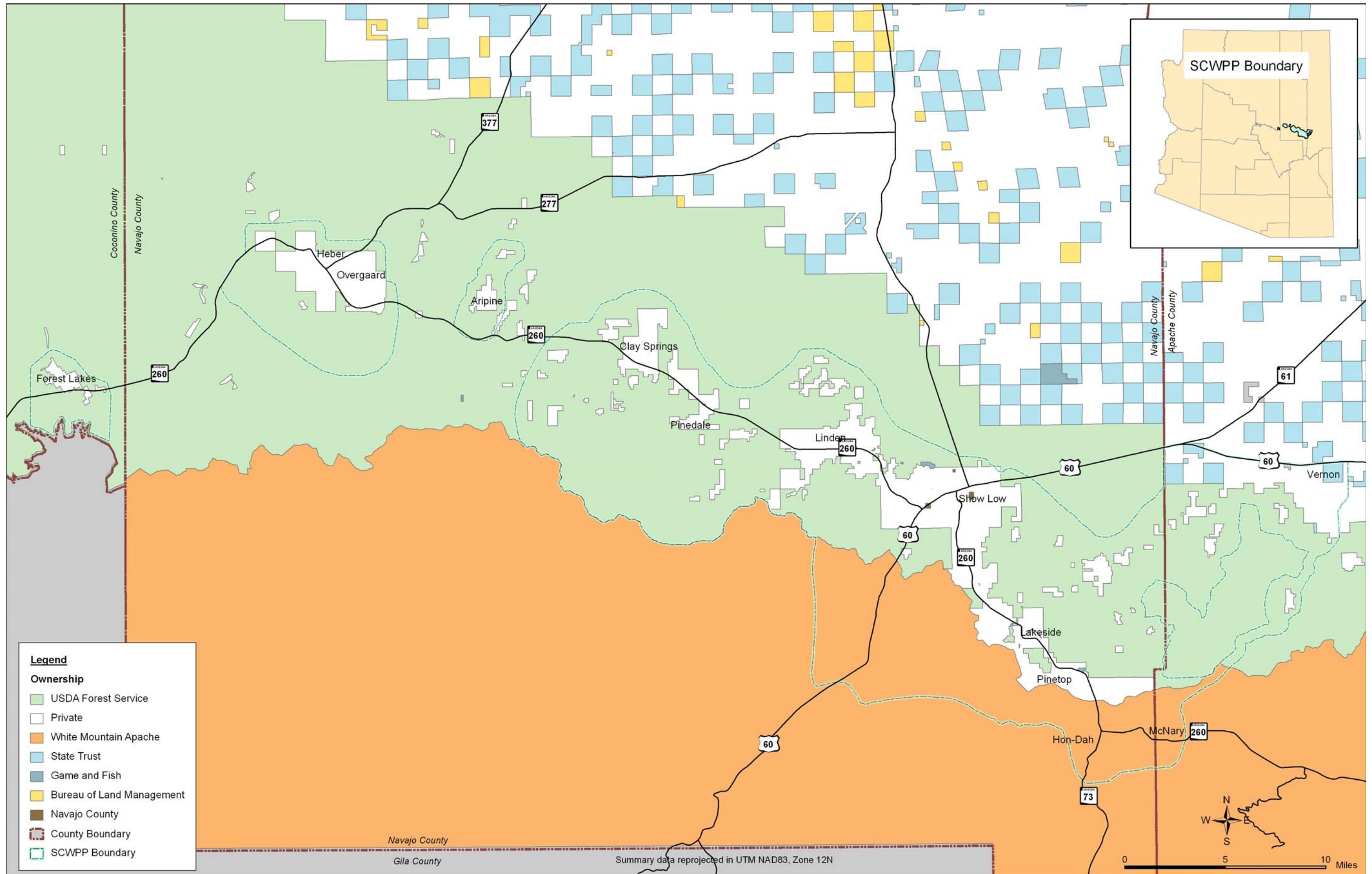
The land in the SCWPP is comprised of 307,711 acres, with land ownership divided among six entities. The USDA Forest Service manages 58.15% (178,866 acres) as part of the Apache-Sitgreaves National Forests. Private property owners account for 22.64% (69,635 acres) located in two incorporated municipalities and several unincorporated communities. The White Mountain Apache Tribe accounts for 18.34% (56,440 acres) of the total SCWPP land area. State Trust Lands, Arizona Game and Fish, and Navajo County property account for less than 1% of the total area (2,770 acres).



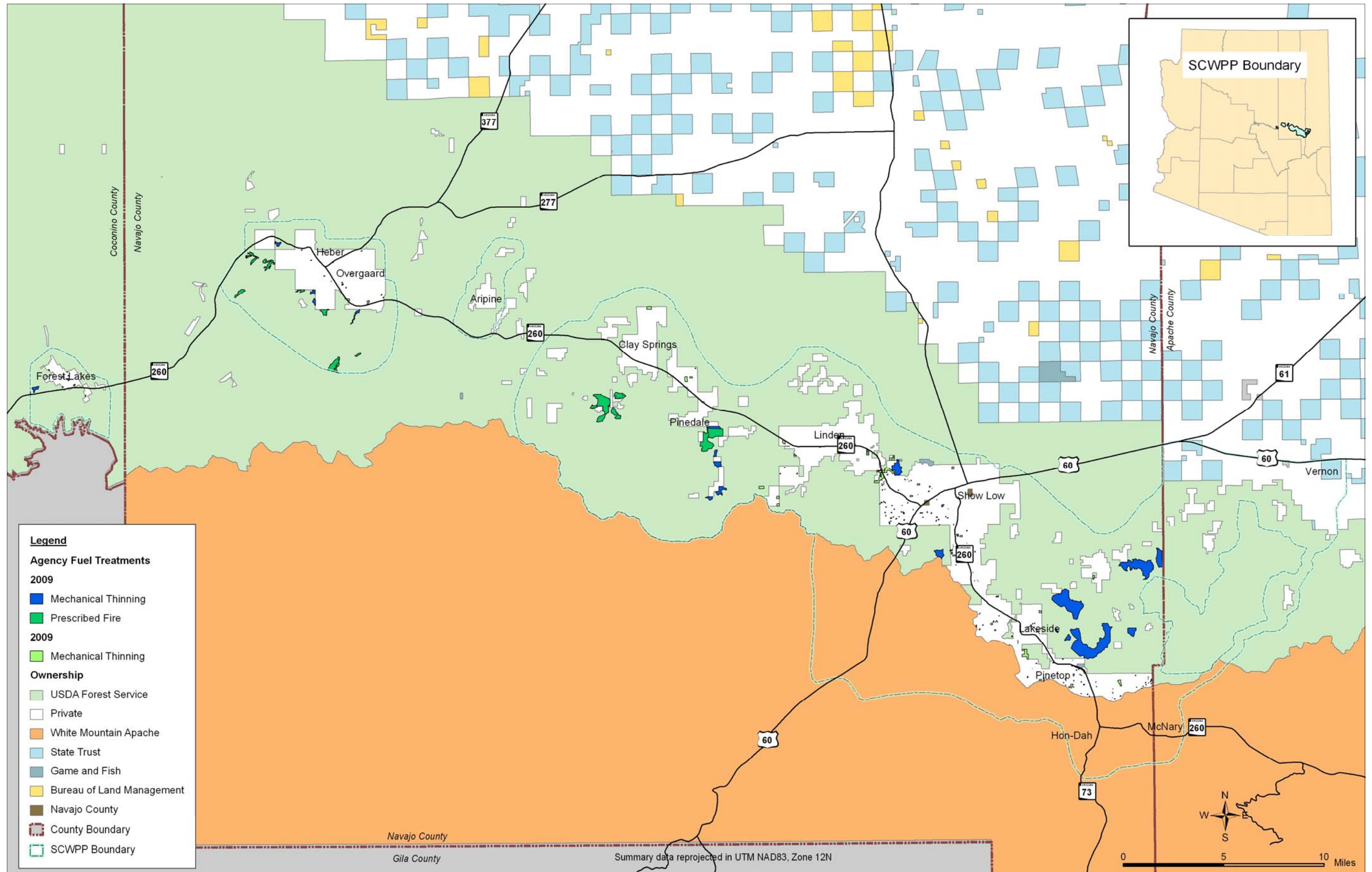
Consolidated Ownership and Treatment Summary Table

	Acres	% of the SCWPP	Total Treated Acres	2009 Treated Acres	% of Total Land Treated	Total Assessed Parcels	2009 Assessed Parcels
SCWPP	307,711	100.00%	90,545	7,416	31.8%	6,629	476
USDA Forest Service	178,866	58.13%	61,725	5,023	35.5%		
Private	69,635	22.63%	5,238 (2,975 parcels)	523 (306 parcels)	7.5%	6,629	476
White Mountain Apache Tribe	56,440	18.34%	23,515	1,870	41.7%		
State Trust	2,261	0.73%	0	0	0.0%		
Game and Fish	363	0.12%	35	0	9.6%		
Navajo County	126	0.04%	32	0	25.4%		

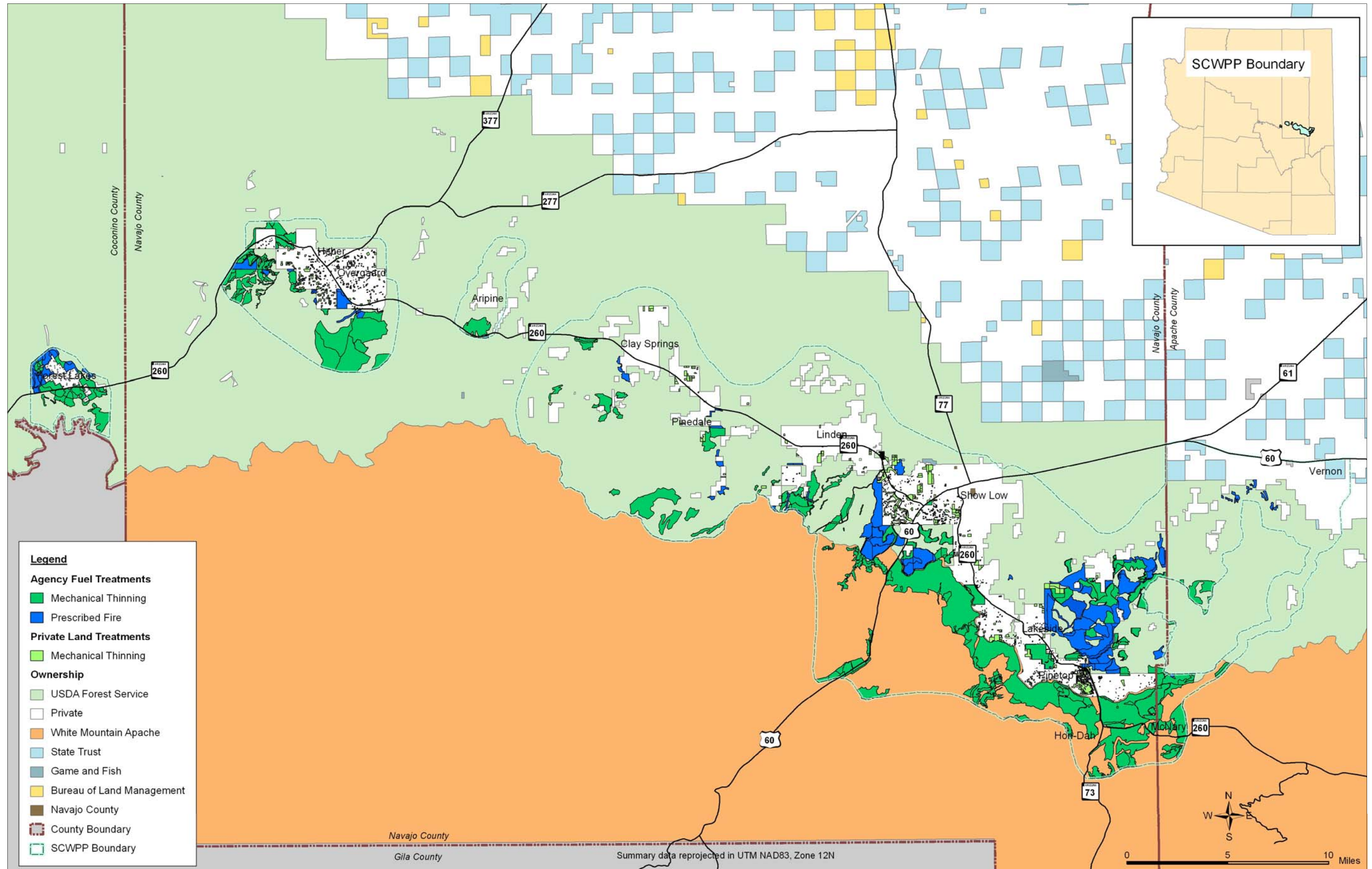
Surface Land Management



2009 Fuel Treatments



Comprehensive Fuel Treatments



USDA Apache-Sitgreaves National Forests Fuel Treatments Summary

Highlights in 2009

Substantial work was accomplished in the Los Burros planning area with more work expected in 2010 and beyond.

About 400 acres were treated in the Pinyon-Juniper fuel type north of Highway 260 (Carlisle area) with 11,000 acres scheduled for thinning and mastication. Additional work of this type is scheduled southwest of Vernon.

Biomass was removed on 435 acres near Pinedale, while 350 acres of site preparation of piling and crushing took place along the Farnsworth and Forest Road 130 roads.

Fires for resource benefit were a large part of the efforts and achievements on the Black Mesa District, and to a smaller extent, on the Lakeside Ranger District.

Work is moving forward on several land exchange projects and planning is taking place for the Timber Mesa-Vernon Wildland Urban Interface project and the Rodeo-Chediski prescribed burn environmental analysis.

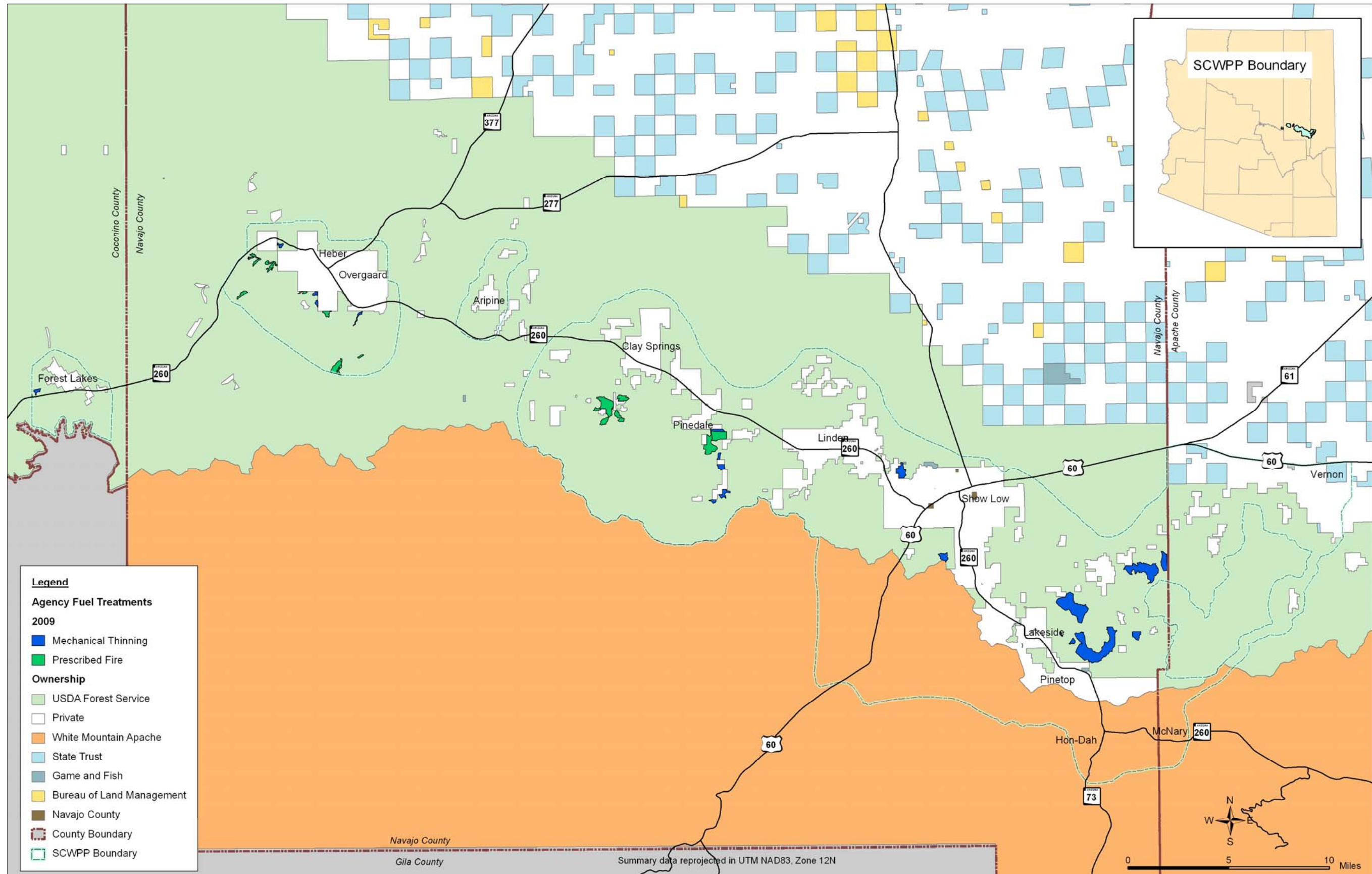
An important agreement was reached between Renegy Holdings Inc. and Future Forest LLC concerning biomass transport and delivery. Cleaner air will be a major benefit from the agreement. More biomass will be removed from the forest, ultimately resulting in less smoke from prescribed burns and wildfires.

Forest Fuel Treatments on USDA Forest Service Lands (acres)

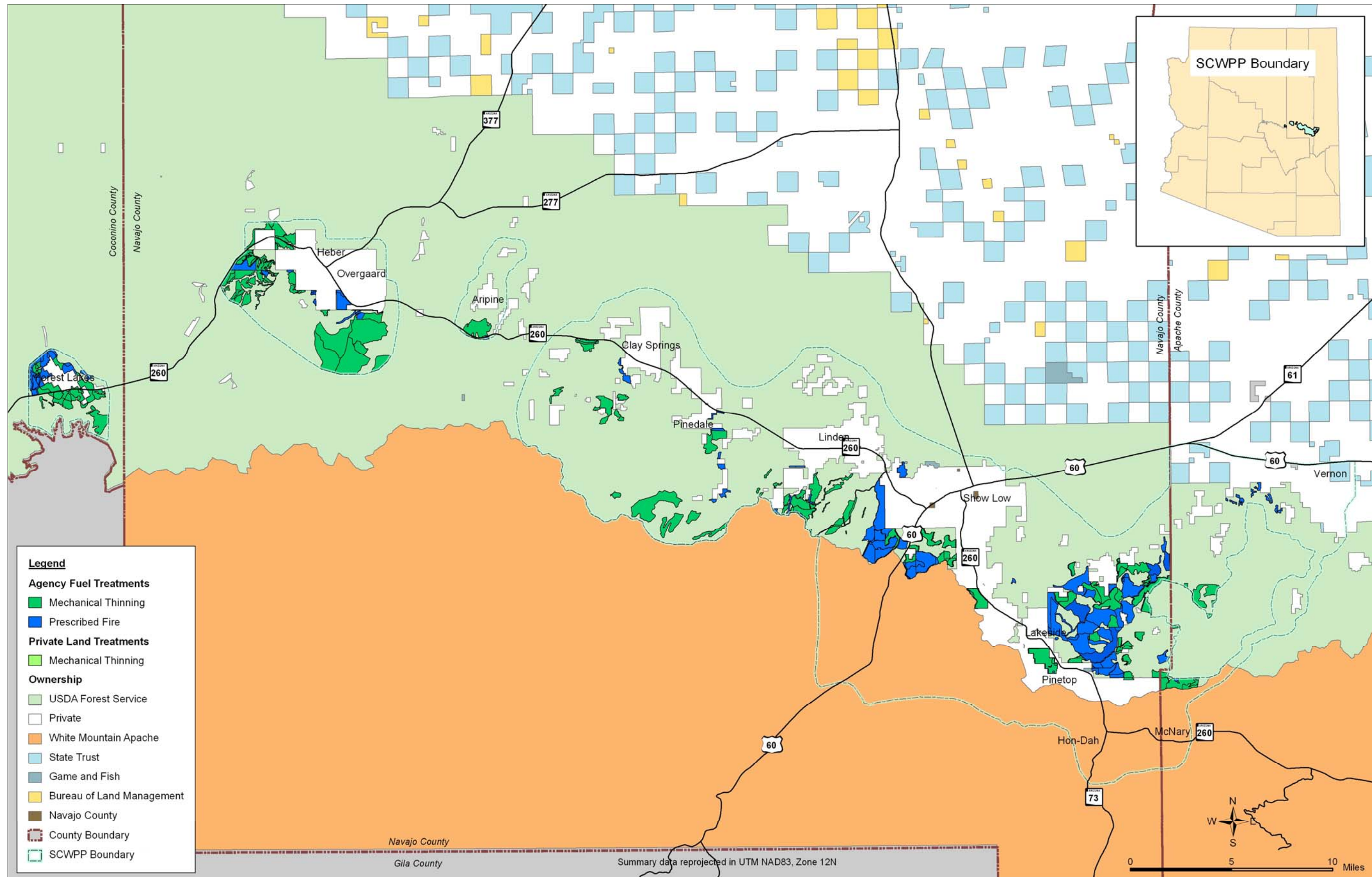
	2009	Previous Years	Total
Mechanical Thinning	2,062	36,407	38,469
Prescribed Fire	2,961	20,295	23,256
Total	5,023	56,702	61,725

USDA Apache Sitgreaves National Forests

2009 Fuel Treatments



USDA Apache Sitgreaves National Forests Comprehensive Fuel Treatments



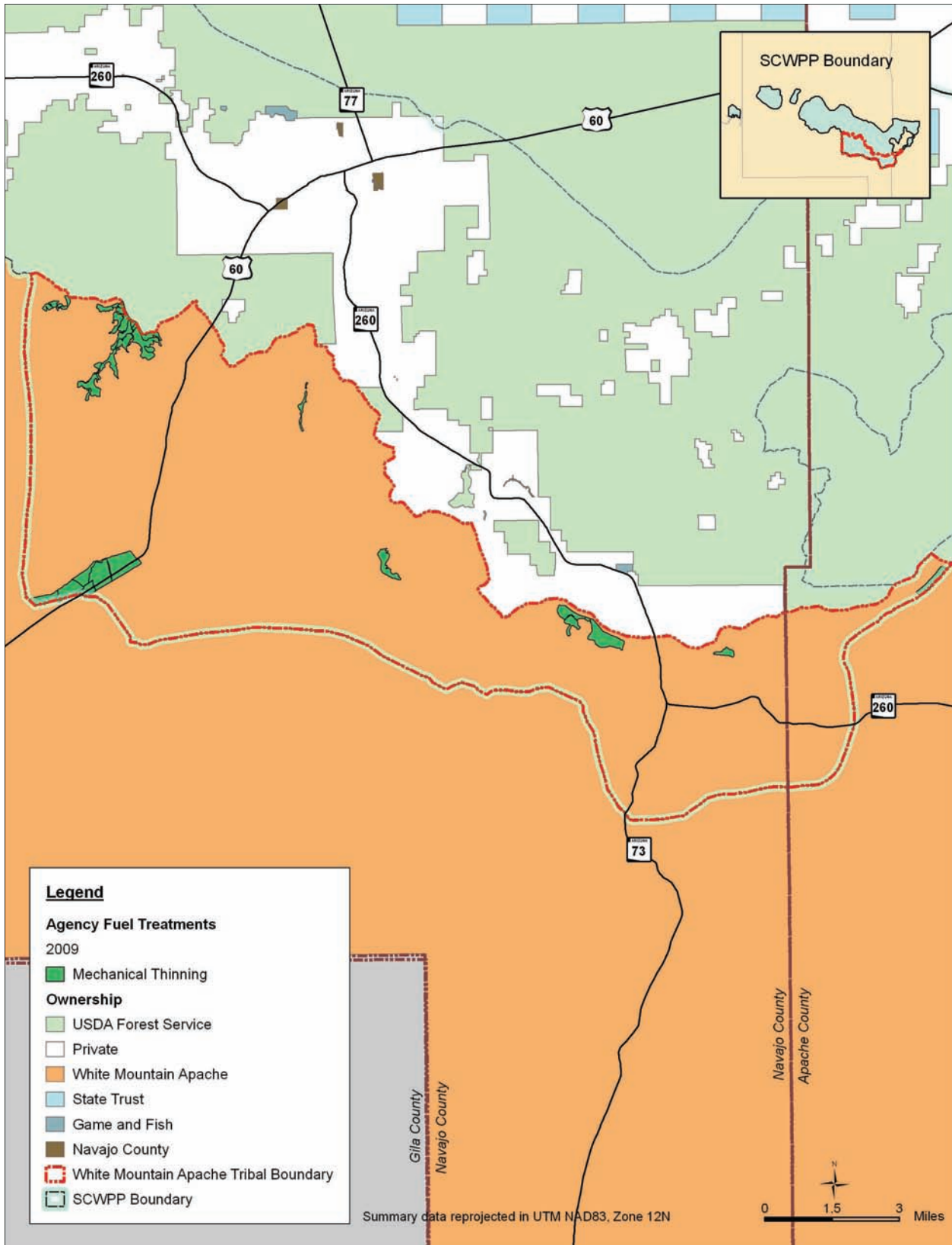
White Mountain Apache Tribal Lands Fuel Treatment Summary

Cumulative fuel treatments on the Fort Apache Indian Reservation within the SCWPP area exceeds 23,000 acres. The Bureau of Indian Affairs has been burning an extensive backlog of slash piles (acreage not reported). Maintenance is needed on much of the land treated in 2002 and 2003 along the northern boundary.

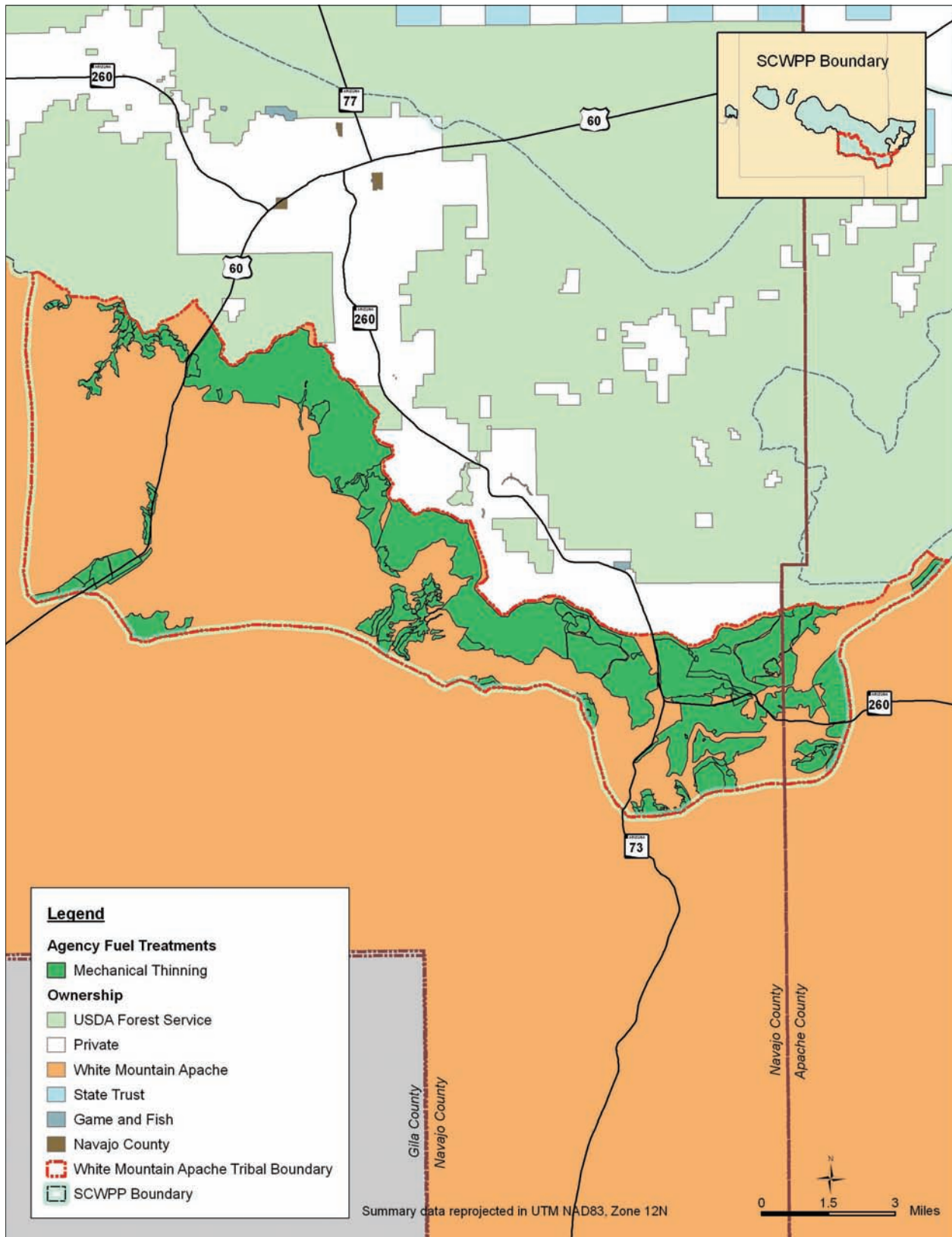
Forest Fuel Treatments on White Mountain Apache Tribal Land (acres)

	2009	Previous Years	Total
Mechanical Thinning	1,870	21,645	23,515
Prescribed Fire	0	0	0
Total	1,870	21,645	23,515

White Mountain Apache Tribal Lands 2009 Fuel Treatments



White Mountain Apache Tribal Lands Comprehensive Fuel Treatments



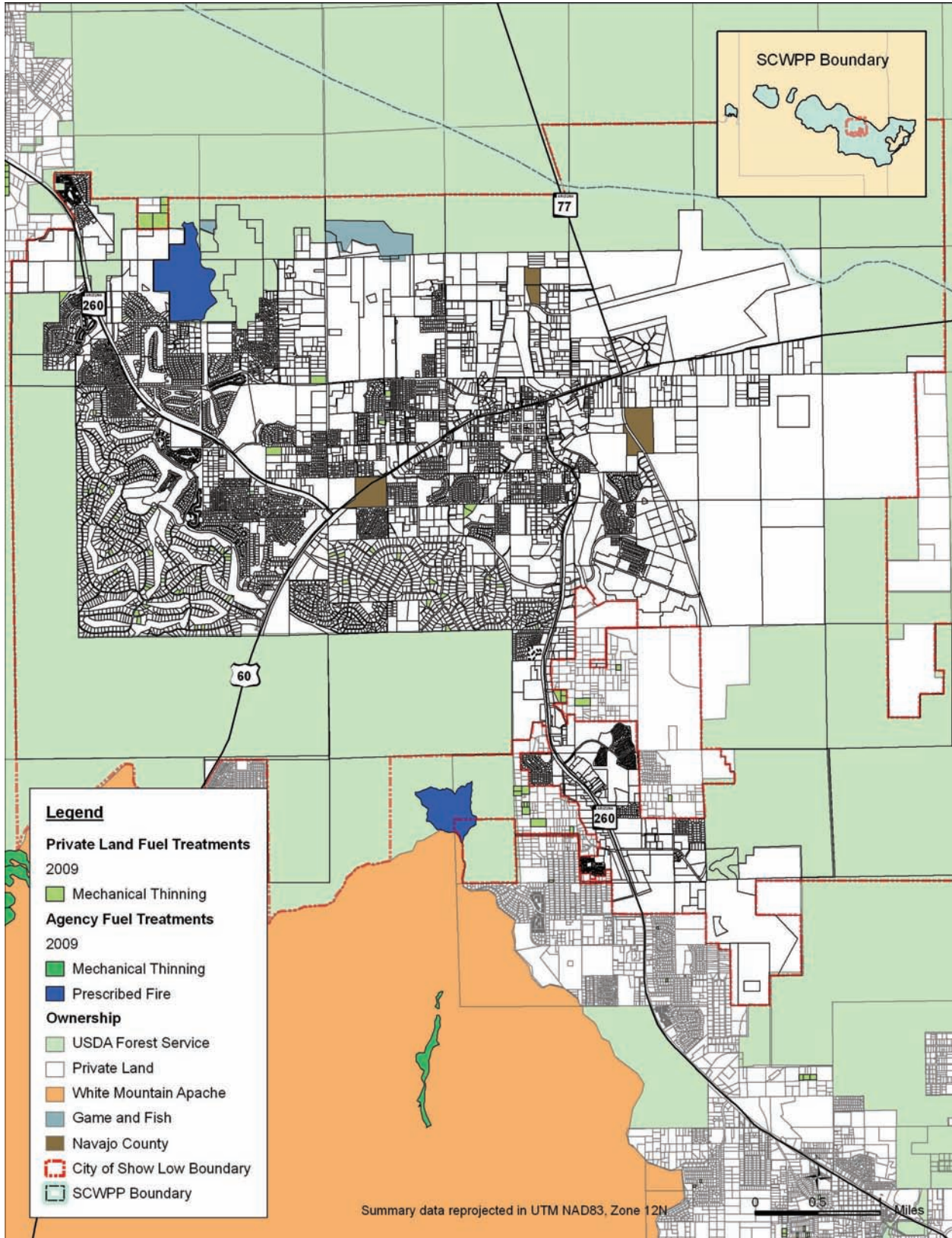
City of Show Low Fuel Treatment Summary

Six thousand four hundred and twenty-five acres have been treated in Show Low since the wildfire protection plan's inception. Of those acres, the Forest Service has treated 3,991 acres and 2,402 acres (1,237 parcels) have been treated on private lands. Collaboration between the City of Show Low, Homeowners Association Management Company (HOAMCO), University of Arizona Cooperative Extension and the Arizona Division of Forestry, brought \$500,000 in grant funds to Show Low for fire risk mitigation work. Efforts by city staff, the mayor and council focused attention on work needed south of Show Low on National Forest lands, and enabled funds to be directed toward required analysis for the project.

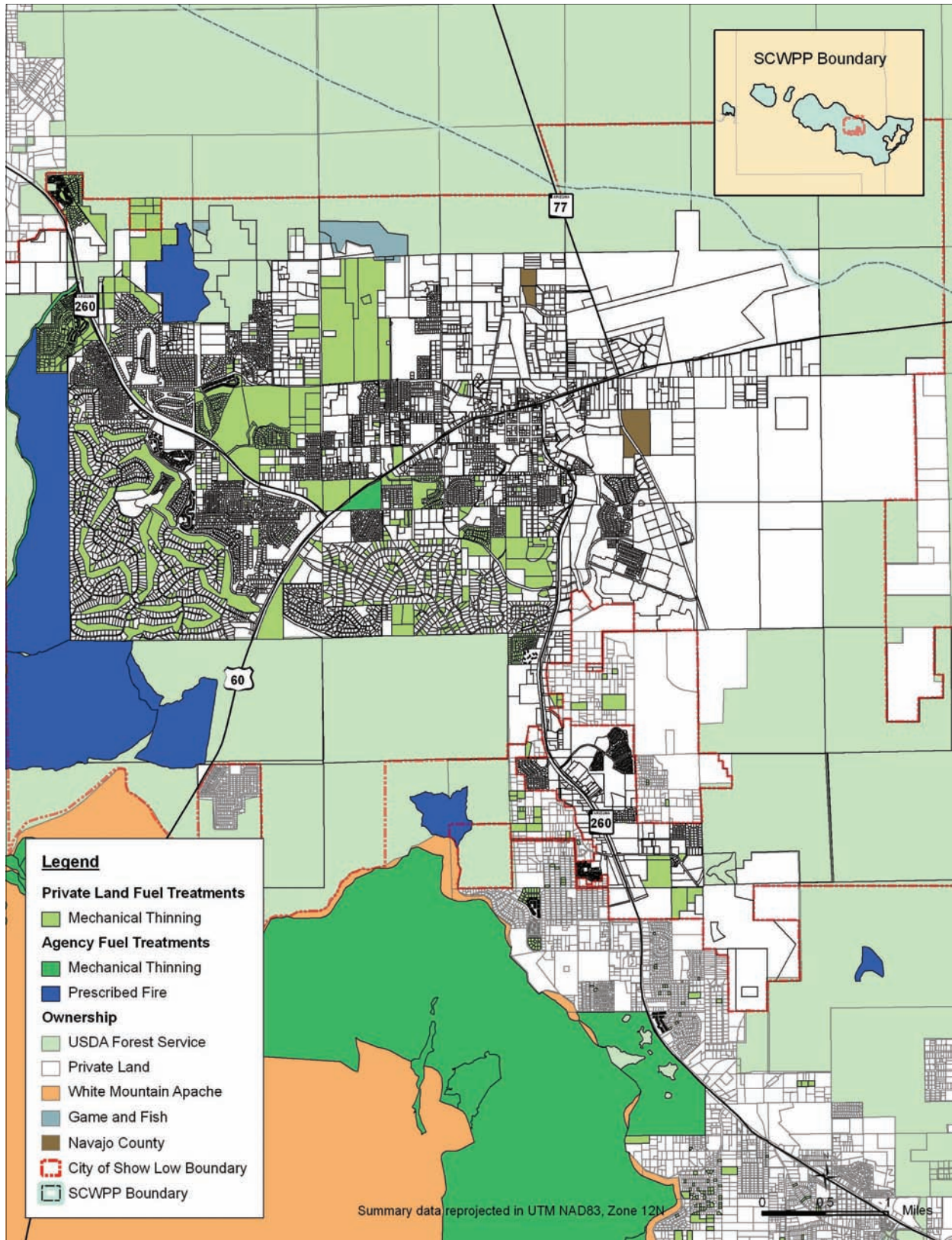
Forest Fuel Treatments within the City of Show Low (acres)

2009	Private Land	USDA FS	Game and Fish	Navajo County	Total
Mechanical Thinning	152 (117 parcels)	0	0	0	152
Prescribed Fire	0	160	0	0	160
Total	152	160	0	0	312

City of Show Low 2009 Fuel Treatments



City of Show Low Comprehensive Fuel Treatments



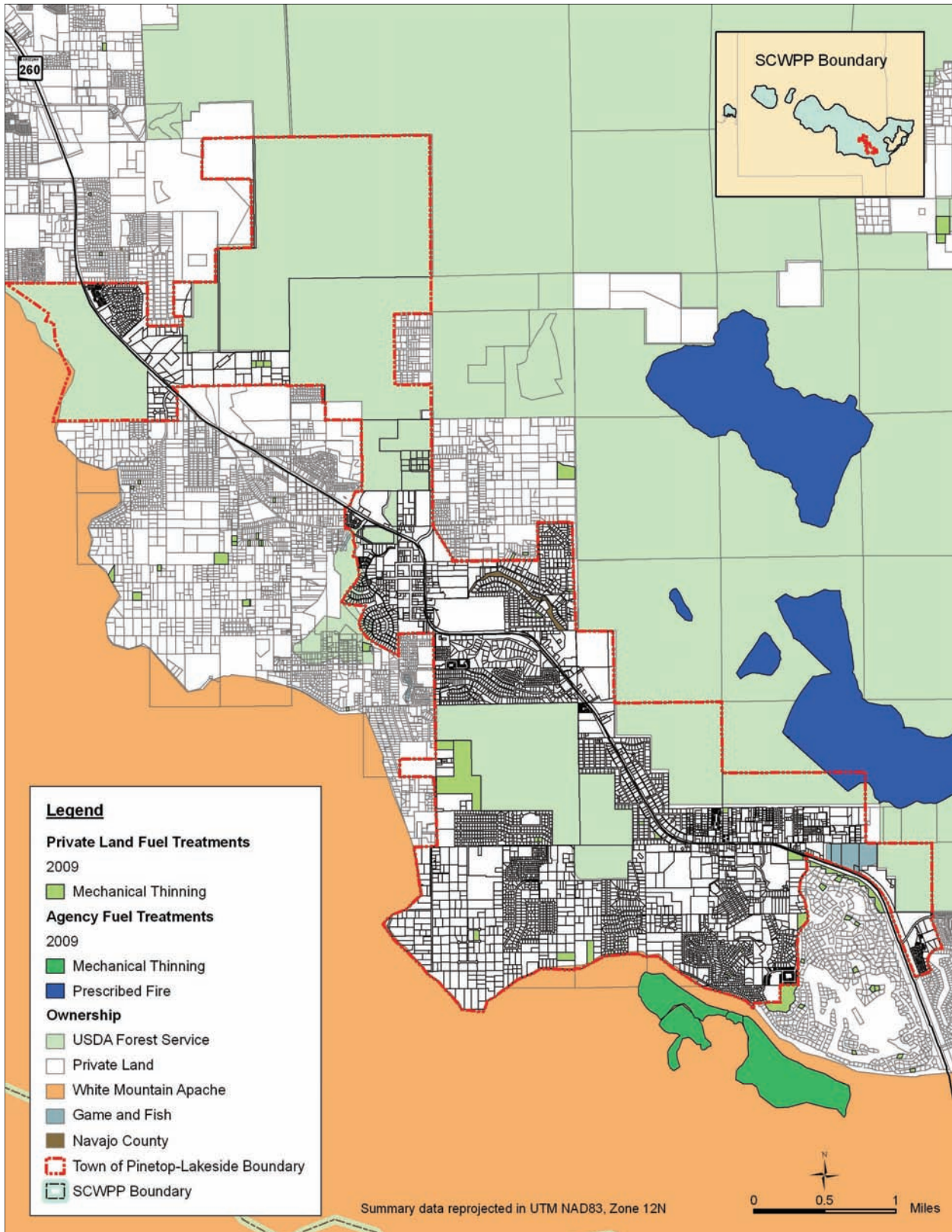
Town of Pinetop-Lakeside Fuel Treatment Summary

The total number of acres treated in Pinetop-Lakeside reached 2,726 by the end of 2009. Of those acres, the Forest Service has treated 2,276 acres. Four hundred and fifteen acres of private lands have been treated in Pinetop-Lakeside using the cost-share grant program since the wildfire protection plan's inception. Maintenance is needed on many properties previously treated.

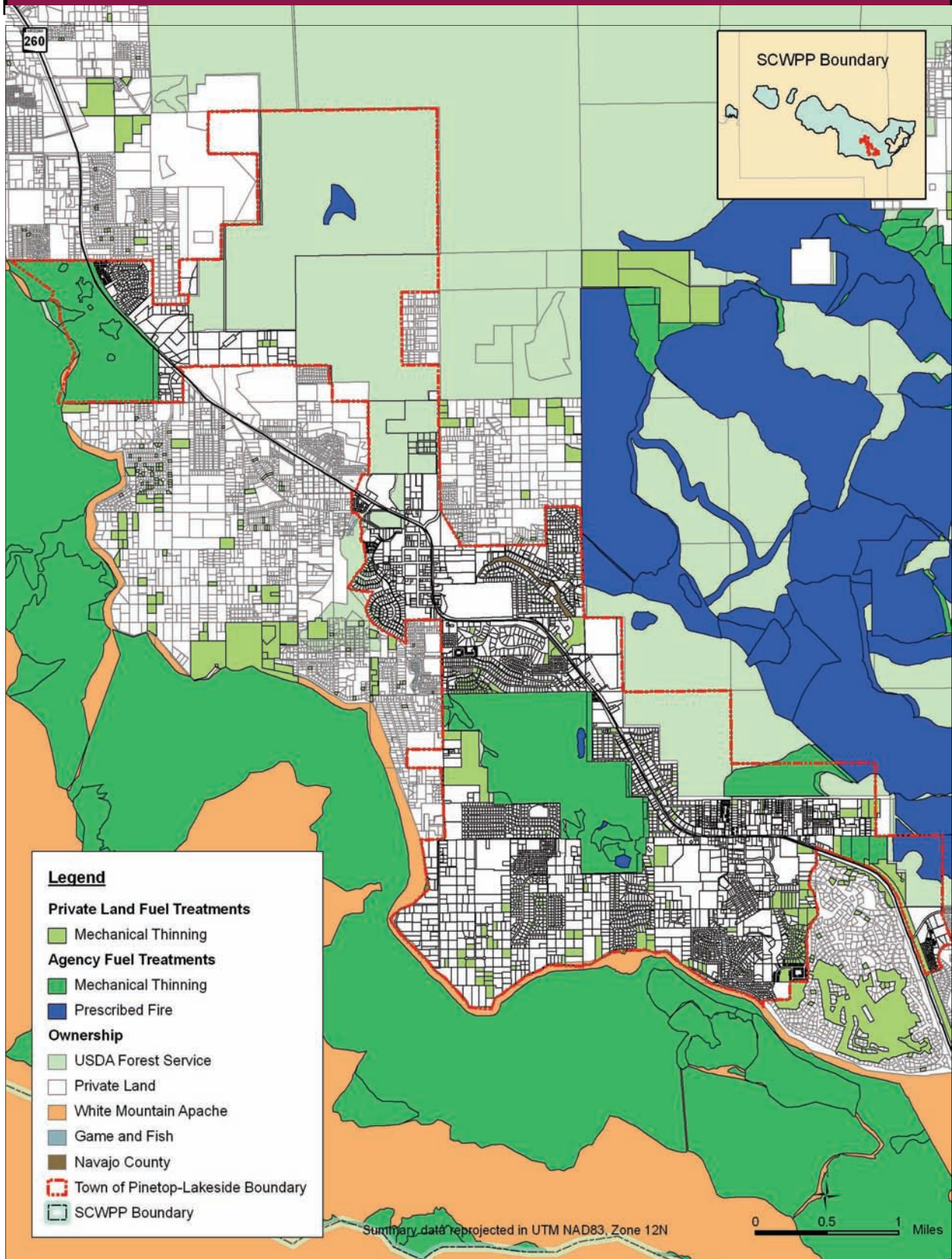
Forest Fuel Treatments within the Town of Pinetop-Lakeside (acres)

2009	Private Land	USDA FS	Game and Fish	Navajo County	Total
Mechanical Thinning	34 (22 parcels)	0	0	0	34
Prescribed Fire	0	14	0	0	14
Total	34	14	0	0	48

Town of Pinetop-Lakeside 2009 Fuel Treatments



Town of Pinetop-Lakeside Comprehensive Fuel Treatments



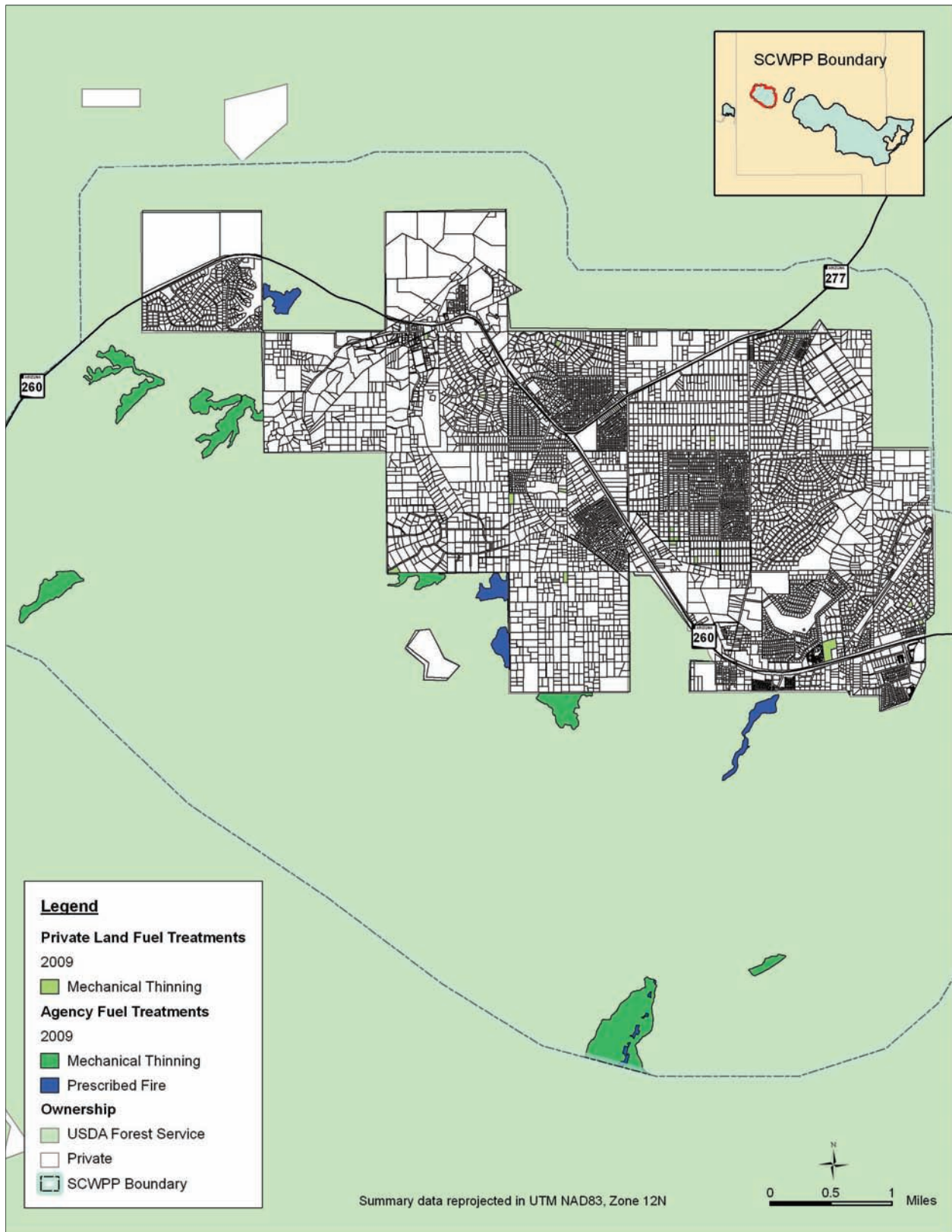
Heber-Overgaard Fuel Treatment Summary

The Heber-Overgaard Fire Department has facilitated treatment on 885 acres (583 parcels) through its grant cost-share program since reporting began. The Forest Service has completed 14,982 acres of treatment in the SCWPP area around Heber-Overgaard.

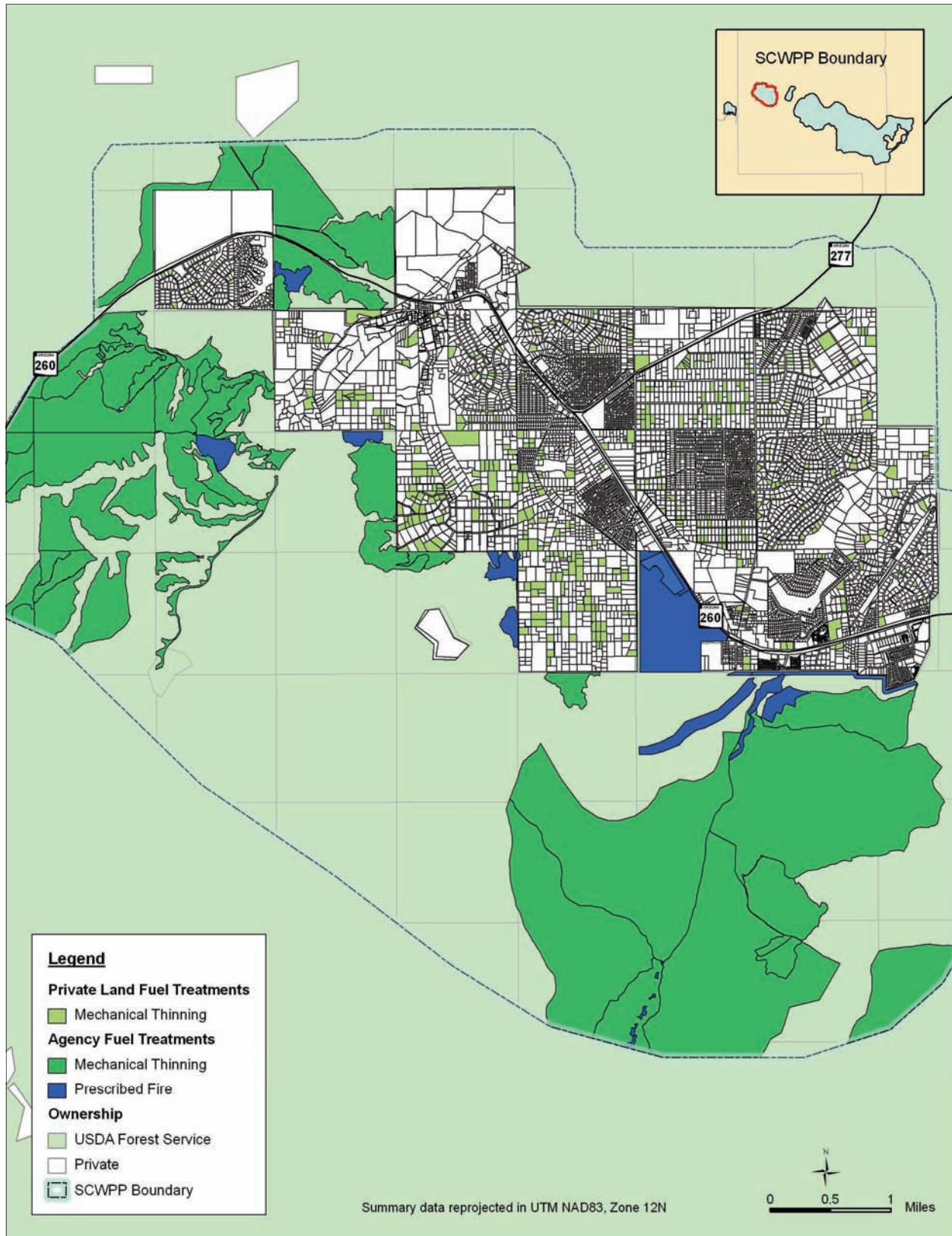
Forest Fuel Treatments within the Unincorporated Area of Heber-Overgaard (acres)

2009	Private Land	USDA FS	Total
Mechanical Thinning	32 (26 parcels)	609	641
Prescribed Fire	0	104	104
Total	32	713	745

Heber-Overgaard 2009 Fuel Treatments



Heber-Overgaard Comprehensive Fuel Treatments



Navajo County Unincorporated Areas (excluding Heber-Overgaard) Fuel Treatment Summary

Private land owners have treated 1,556 acres (540 parcels) through the grant cost share program in unincorporated acres of Navajo County.

Forest Fuel Treatments within the unincorporated SCWPP areas of Navajo County, excluding Heber-Overgaard (acres)

2009	Private Land	USDA FS	Total
Mechanical Thinning	292 (128 parcels)	1,448	1,740
Prescribed Fire	0	2,652	2,652
Total	292	4,100	4,392

Coconino County (Forest Lakes) Fuel Treatment Summary

One hundred and two acres of private lands have been treated within Forest Lakes. The Apache-Sitgreaves National Forests have treated 5,798 acres adjacent to the development. The Forest Lakes Fire Department is managing a \$500,000 fire risk mitigation grant for the area.

Forest Fuel Treatments within the unincorporated SCWPP Area of Coconino County (acres)

2009	Private Land	USDA FS	Total
Mechanical Thinning	14 (14 parcels)	3	17
Prescribed Fire	0	31	31
Total	14	34	48

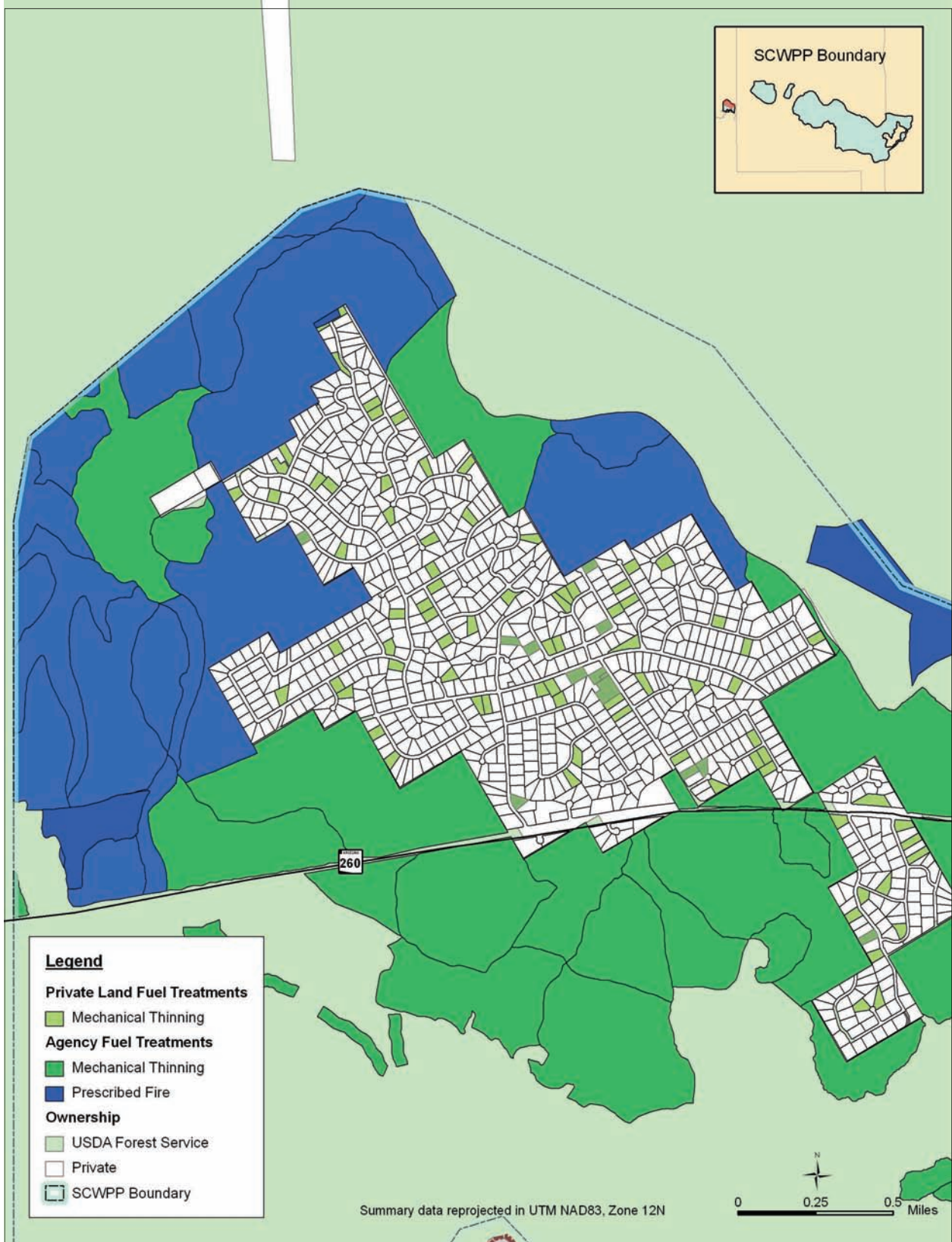
Assessments within the unincorporated SCWPP area of Coconino County (Forest Lakes)

2009	Low Risk	Moderate Risk	High Risk	Total
Parcels	95	219	162	476

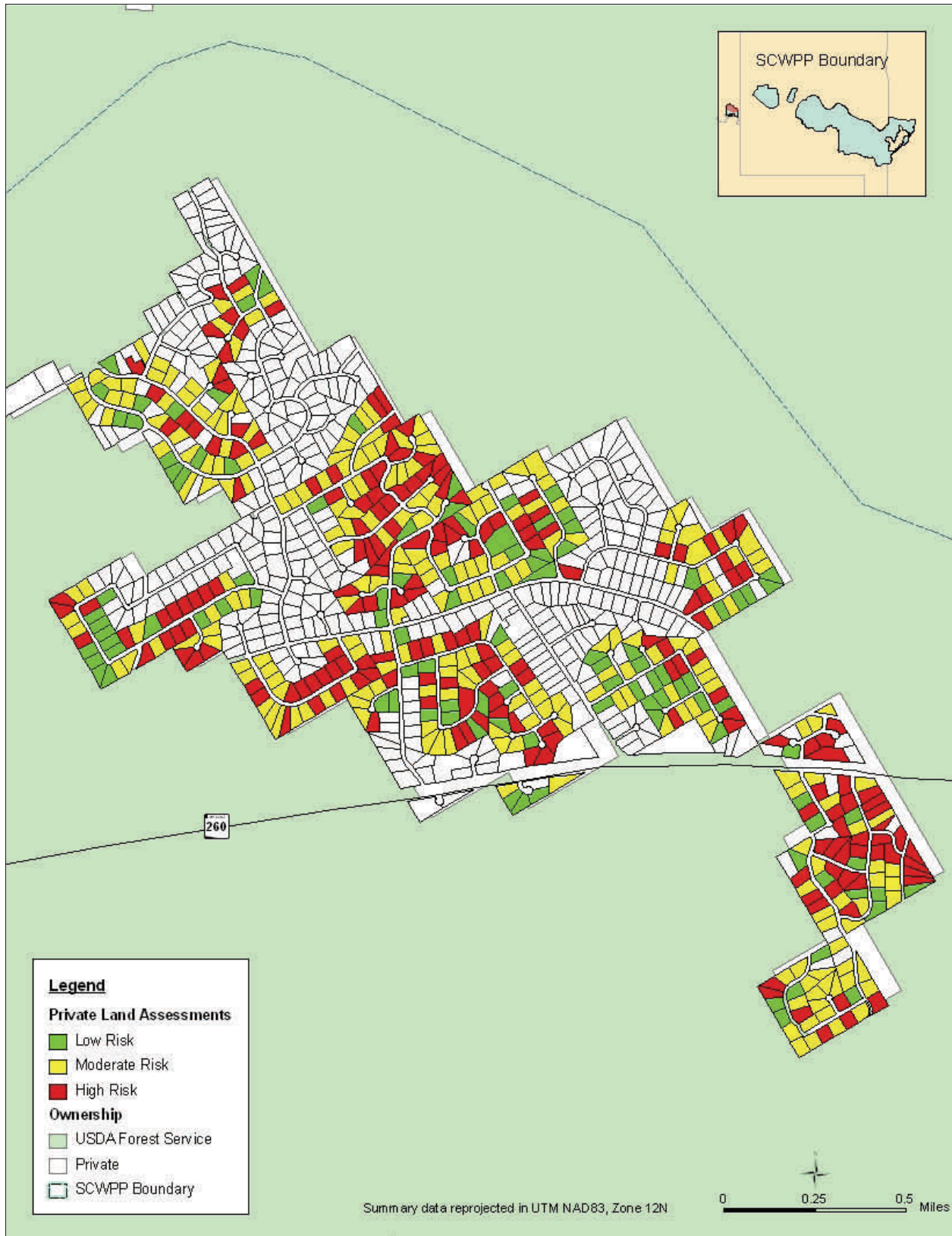
Coconino County (Forest Lakes) 2009 Fuel Treatments



Coconino County (Forest Lakes) Comprehensive Fuel Treatments



Coconino County (Forest Lakes) Private Land Hazard Assessments



Acknowledgments

The following individuals and entities are thanked for their contributions to this report:

University of Arizona, Navajo County Cooperative Extension

Lloyd Wilmes, SCWPP Administrator
Meckenzie Helmandollar-Powell, GIS Analyst

Navajo County

Jimmy Jayne, County Manager
Ryan Taylor, GIS Manager

The City of Show Low

Ed Muder, City Manager
Rob Jones, GIS Manager
Brandon Merklin, GIS Technician

Town of Pinetop-Lakeside

Kelly Udall, Town Manager
Brian McCabe, Town Planner

Show Low Fire Department

Ben Owens, Fire Chief
Chris Jessop, Assistant Fire Chief
Tom Lopez, Fuels Crew Field Supervisor

Lakeside Fire Department

Tim Van Scoter, Fire Chief
Toni Russell, Administrative Manager

Forest Lakes Fire Department

Dave Rodriques, Fire Chief
Al Major, Grant Administrator

USDA Forest Service

Edward Collins, District Ranger, Lakeside Ranger District
Pamela Klein-Taylor, GIS Analyst, Lakeside Ranger District
Steve Richardson, GIS Analyst, Black Mesa Ranger District

White Mountain Apache Tribe

Jonathan Brooks, Tribal Forester
Rachel Endfield, GIS Manager