



---

**Construction update**  
**July 28, 2009**

The Oregon Department of Transportation will begin building a work bridge over the Willamette River where it passes under Interstate 5 as early as Thursday, July 30.

Work crews will use pile drivers, creating some noise disturbance for neighbors, rivers users and visitors to Alton Baker Park. This work will occur intermittently between 7 a.m. and 6 p.m., Mondays through Saturdays, through Oct. 31.

Contractors are also starting work in Alton Baker Park in early August. Bicyclists and pedestrians can move safely around the construction area on detour paths. Detour information is provided at kiosks located throughout the park. Please visit our Web site at [www.willamettebridge.org](http://www.willamettebridge.org) for detour routes and information.

For more information, please contact:

- Rick Little, ODOT Region 2 Public Information Officer, (541) 726-2442.
- Suzanne Roberts, Public Involvement Coordinator, (503) 471-6866.

# Stay Informed!

Construction of the Interstate 5 Bridge over the Willamette River will begin in May. The Oregon Department of Transportation will build detours for some of the bicycle and pedestrian paths to ensure safe mobility around the construction areas.

ODOT's project team will have stations in the parks near the bridge on April 17 and April 18 to provide information about the locations and schedules of the detours.

Look for us along the path at **Alton Baker Park**

Friday, April 17 from 4 p.m. to 6 p.m.

Saturday, April 18, from 9 a.m. to 11 a.m.

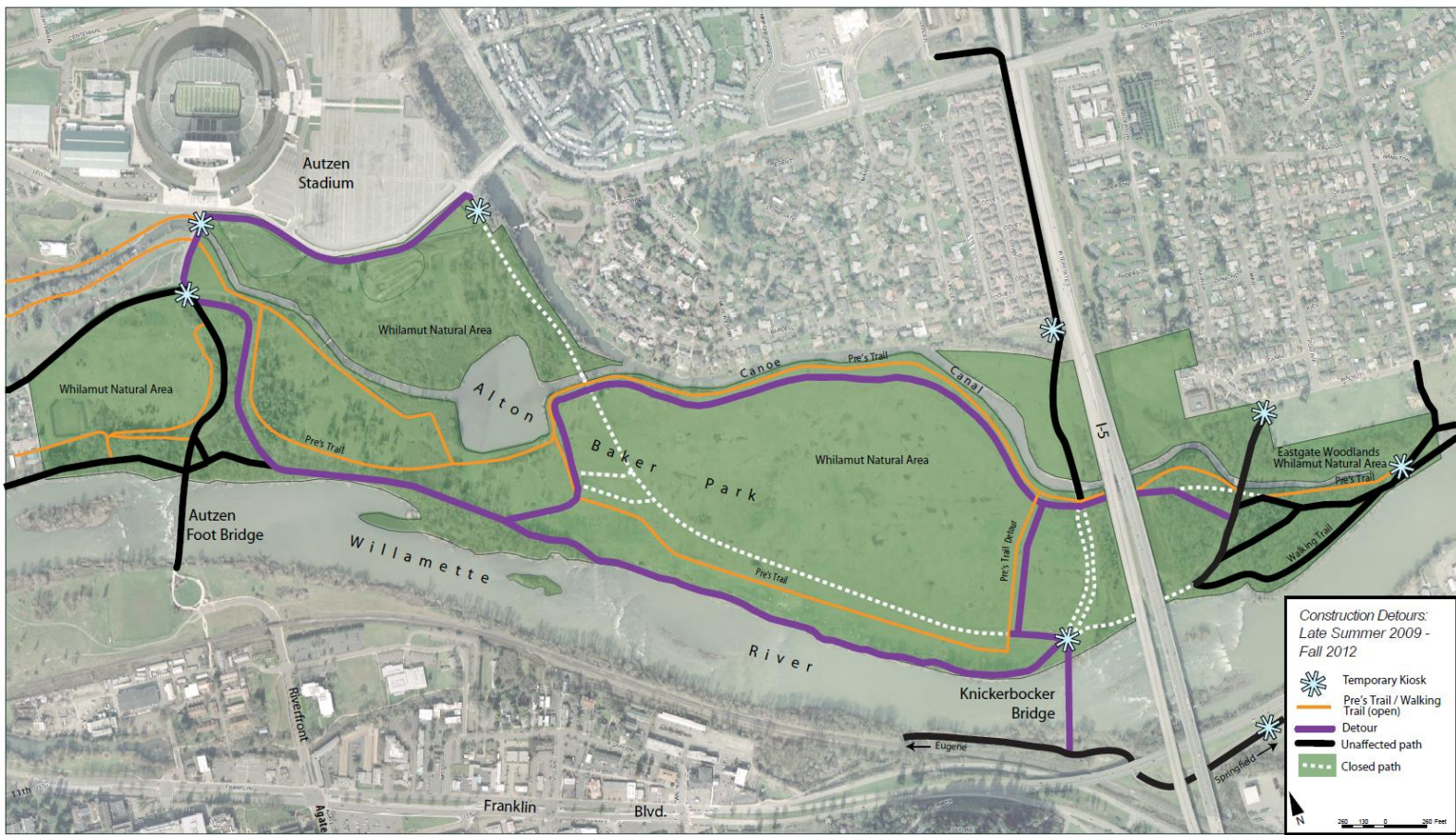
Visit our Web site at [www.willamettebridge.org](http://www.willamettebridge.org) and watch for kiosks in the park showing the detours as the project continues.

## For more information, contact:

**Joe Harwood**, ODOT Region 2 Public Information Officer,  
(541) 726-2442, [Joseph.D.Harwood@odot.state.or.us](mailto:Joseph.D.Harwood@odot.state.or.us); or

**Megan Banks**, Public Involvement Manager, (541) 682-7413, [mbanks@lcog.org](mailto:mbanks@lcog.org)





This section contains a large amount of blank white space, likely representing the main body of a report or document that was not fully rendered in this view.

# Willamette River Boaters Near I-5 Bridge Should Stay North



Boaters are cautioned to watch for construction on the Willamette River Interstate 5 bridge, which will be continuing through December 2012.

Those using the river in this area should avoid the channel near the south bank. Always use the north bank channel.

Signs posted at ramps and in the river will direct you to the safest channel. For your safety, please obey the signs.



For the more information, please visit:  
[www.Willamettebridge.org](http://www.Willamettebridge.org)  
[www.twitter.com](http://www.twitter.com) (Username: OregonDOT)  
[www.Keepusmoving.com](http://www.Keepusmoving.com)

# All Path Users: Detour change, expect delays



## The Canoe Canal Path under Interstate 5 will be closed Aug. 1 - 26.

Beginning Aug. 1, path users will be detoured along the North Bank Path, which will be reopened during this time.

Though an east-west route will always be open, expect delays. Please obey all signs and stay on marked detours. Flaggers will direct traffic through the area as needed.

Bicyclists: for the safety of all path users, please slow down when passing through the construction area. Cyclists are subject to the same rules as motorists. Fines in construction zones double for not obeying flaggers or riding on a road or path that is closed.

During the path closure, construction crews will modify the walls of the Canoe Canal and make other improvements.



For Project updates, please visit  
[www.willamettebridge.org](http://www.willamettebridge.org), or follow us on  
Twitter: @OregonDOT and our blog at  
[www.willametteriverbridge.blogspot.com](http://www.willametteriverbridge.blogspot.com).

# **Bicyclists in construction zones must follow Rules of the Road**

## **Watch for construction in the East Alton Baker Park**

Bicyclists are subject to the same rules as other motorists, including doubling of fines in construction zones for not obeying a flagger or riding on a road or path that is closed. Closures and delays are necessary to protect the safety of people using the paths, as well as construction workers.

Detours will be well marked, and flaggers will be on the paths to direct bicyclists, walkers and runners. Expect intermittent delays.

### **For the more information, please visit:**

[www.Willamettebridge.org](http://www.Willamettebridge.org)

[www.twitter.com](https://www.twitter.com) (Username: OregonDOT)

[www.Keepusmoving.com](http://www.Keepusmoving.com)

