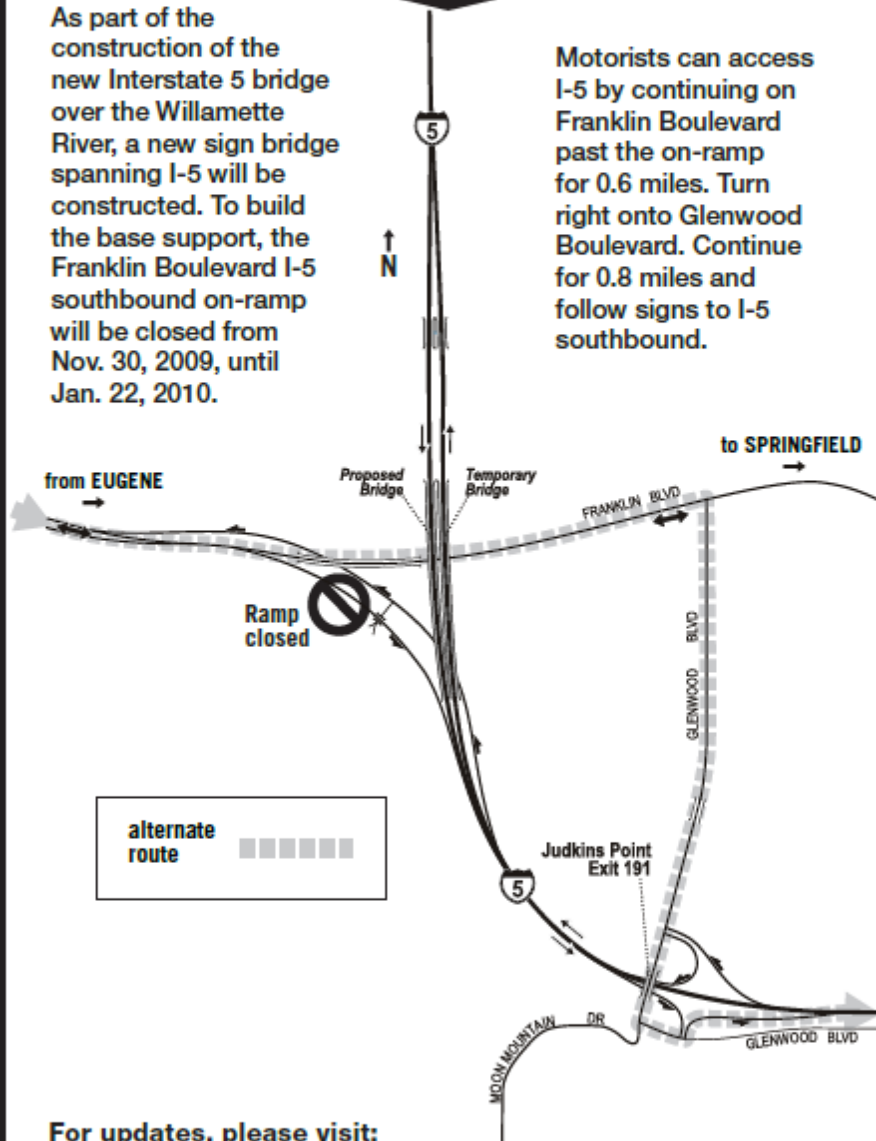


# Franklin on-ramp to Interstate 5 southbound closed Nov. 30, 2009, to Jan. 22, 2010

As part of the construction of the new Interstate 5 bridge over the Willamette River, a new sign bridge spanning I-5 will be constructed. To build the base support, the Franklin Boulevard I-5 southbound on-ramp will be closed from Nov. 30, 2009, until Jan. 22, 2010.

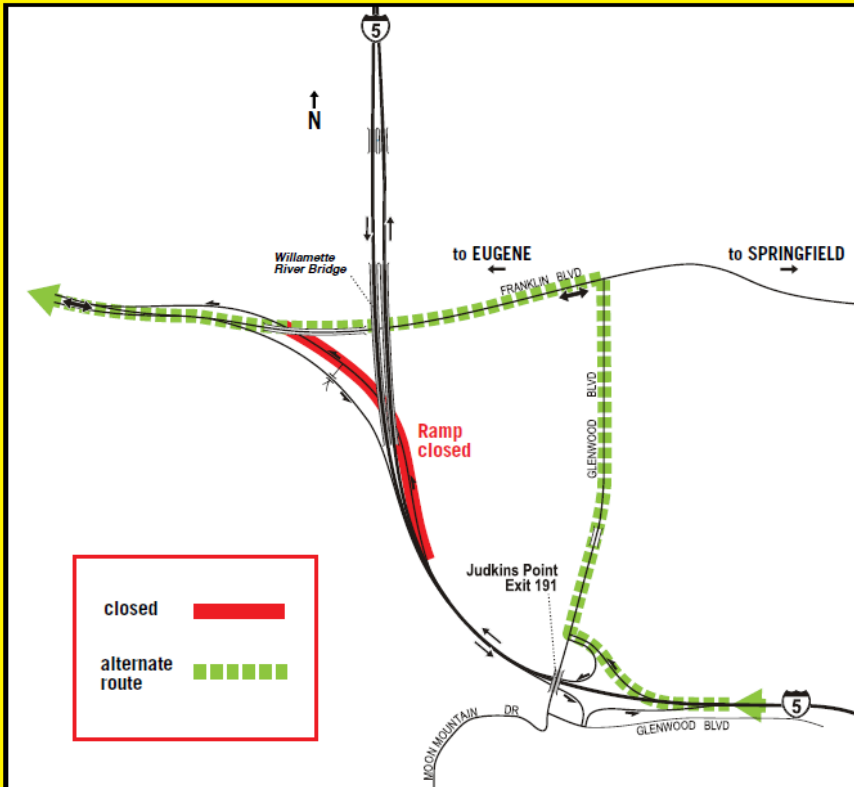
Motorists can access I-5 by continuing on Franklin Boulevard past the on-ramp for 0.6 miles. Turn right onto Glenwood Boulevard. Continue for 0.8 miles and follow signs to I-5 southbound.



For updates, please visit:  
[www.willamettebridge.org](http://www.willamettebridge.org)  
[www.twitter.com \(username: OregonDOT\)](https://twitter.com/OregonDOT)  
[www.keepusmoving.com](http://www.keepusmoving.com)



# Interstate 5 northbound off-ramp to Franklin Boulevard closed Feb. 15 to Feb. 19



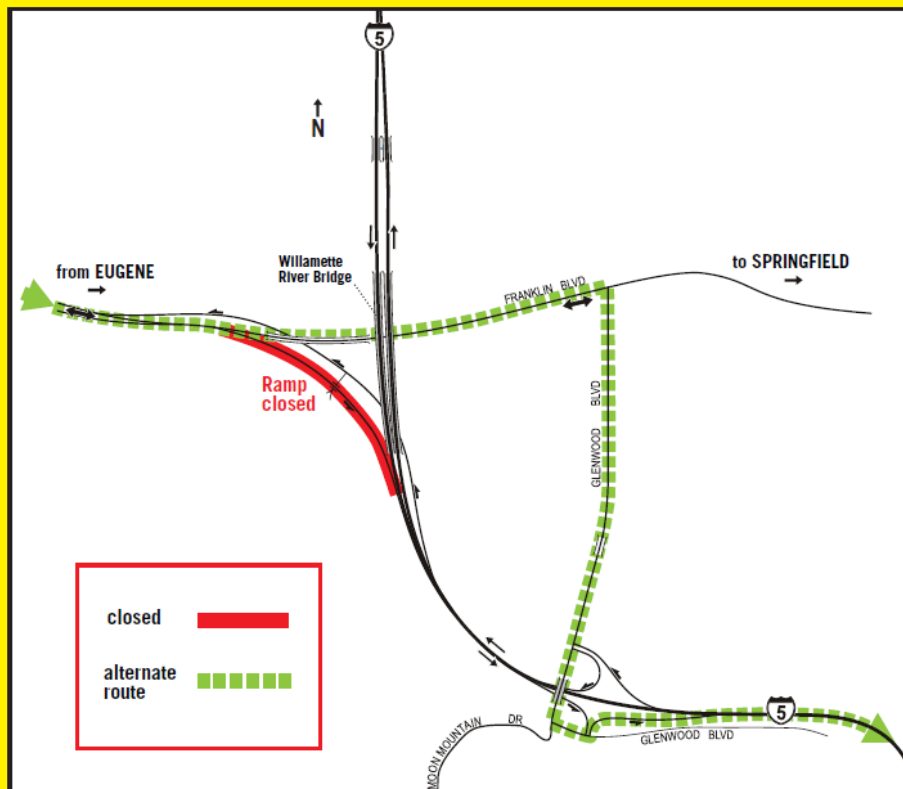
Contractors for the Oregon Department of Transportation will close the Interstate 5 northbound off-ramp to Franklin Boulevard for five days while crews demolish the decommissioned bridge. The northbound off-ramp will close again the first week in April for eight weeks while the support for the I-5 sign bridge is constructed.

Motorists northbound on I-5 can access Franklin Boulevard by using Glenwood Boulevard, exit 191. After exiting I-5, turn right and continue on Glenwood Boulevard approximately 0.8 miles to Franklin Boulevard. Turn left (west) and proceed to Eugene.

For updates, please visit:  
[www.willamettebridge.org](http://www.willamettebridge.org)  
twitter (username: OregonDOT)  
[www.keepusmoving.com](http://www.keepusmoving.com)



# Franklin on-ramp to Interstate 5 southbound closed June 21 to Dec. 30



As part of the construction of the new Interstate 5 bridge over the Willamette River, the Franklin Boulevard on-ramp to southbound I-5 will be realigned with the new I-5 bridge. A sound wall will also be built on the west side. The on-ramp will be closed from June 21 through December for this construction.

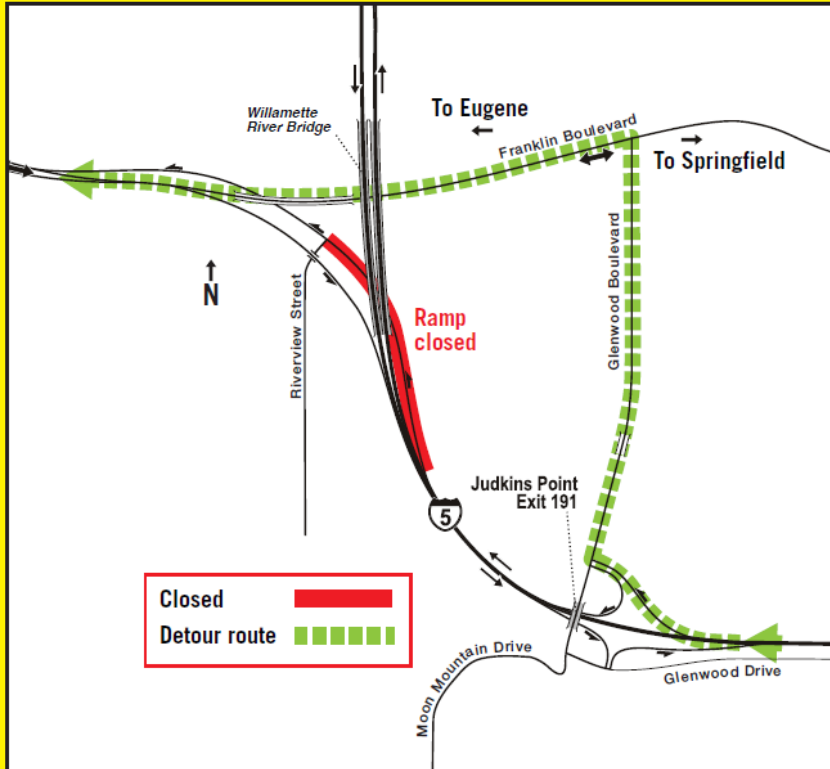
Motorists can access I-5 by travelling east on Franklin Boulevard past the closed on-ramp and continuing for 0.6 miles to Glenwood Boulevard. Turn right and follow the signs to I-5 southbound, about 0.8 miles.

Riverview Street access will remain open throughout the construction for local traffic.

For updates, please visit:  
[www.willamettebridge.org](http://www.willamettebridge.org)  
[www.twitter.com \(username: OregonDOT\)](https://twitter.com/OregonDOT)  
[www.KeepusMoving.com](http://www.KeepusMoving.com)  
<http://willametteriverbridge.blogspot.com>



# Interstate 5 northbound off-ramp to Franklin Boulevard closed Oct. 2011 to Oct. 2013



Contractors for the Oregon Department of Transportation will close the Interstate 5 northbound off-ramp to Franklin Boulevard, exit 192, for two years during construction of the new northbound Willamette River Bridge.

Motorists traveling northbound on I-5 can access Franklin Boulevard using Glenwood Boulevard, exit 191. After exiting I-5, turn right and continue on Glenwood Boulevard approximately 0.8 miles to Franklin Boulevard. Turn left (west) and proceed to Eugene.

Residents of the Laurel Hill Valley neighborhood will still be able to access westbound Franklin Boulevard from Riverview Street.

For current project updates, please visit [www.willamettebridge.org](http://www.willamettebridge.org), and follow us on Twitter: @OregonDot or our blog at [willametteriverbridge.blogspot.com](http://willametteriverbridge.blogspot.com).



# I-5 off-ramp to Franklin Boulevard will close for two years

As part of the construction of the new Interstate 5 bridge over the Willamette River, the I-5 northbound off-ramp to Franklin Boulevard, exit 192, will be closed from Oct. 3, 2011 to October 2013.

Motorists traveling northbound on I-5 to Franklin Boulevard will detour using exit 191 to Glenwood Boulevard. See the detour map below. Local access between Riverview Street and Franklin Boulevard will remain open.

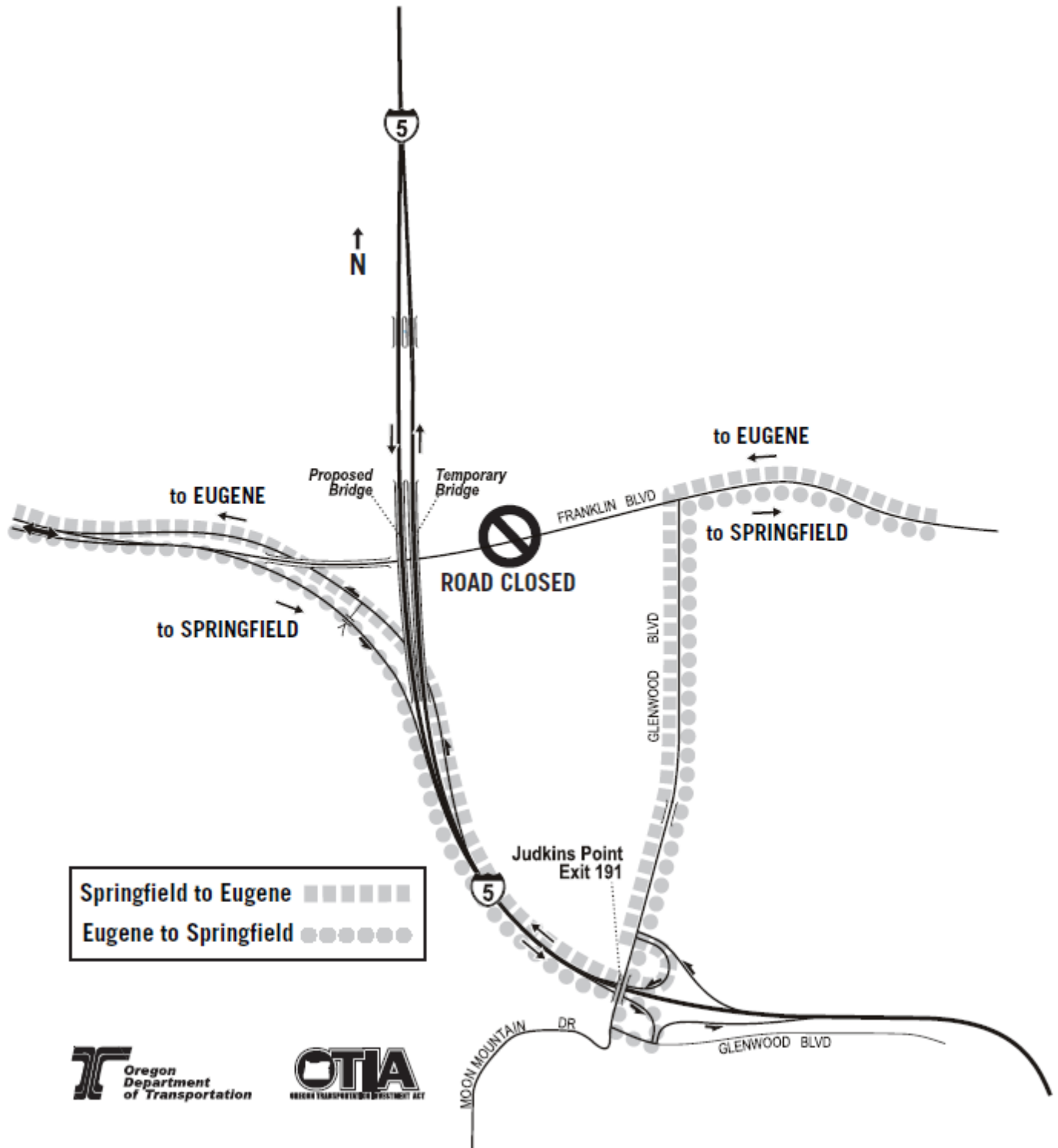


For project information and updates, please visit:  
[www.willamettebridge.org](http://www.willamettebridge.org)  
[www.twitter.com](http://www.twitter.com) (username: @OregonDOT)  
[www.KeepUsMoving.info](http://www.KeepUsMoving.info)  
Or call (541) 726-2442



# Franklin Boulevard Closure Detour Routes

Nov. 20 at 8 p.m. through Nov. 23 at 7 a.m.



# Franklin Boulevard on-ramp to southbound Interstate 5 now open

RAMP TO  
I-5 SO.  
OPEN

The Oregon Department of Transportation has reopened the southbound Interstate 5 on-ramp from Franklin Boulevard.

ODOT closed the ramp in June to realign it with the new southbound I-5 Willamette River Bridge scheduled to open to traffic late in 2011.

Drivers using the new on-ramp will also notice:

- Improved lighting.
- A new retaining wall to support the raised roadway.
- A sound wall to decrease the noise of I-5 traffic to the adjacent neighborhood.



Southbound on-ramp



Soundwall: neighborhood side.

## Thank you

ODOT and Hamilton Construction appreciate your support and understanding while the ramp was closed. We are committed to keeping you up to date as the bridge project continues.



For the latest online information about the project, please visit [www.willamettebridge.org](http://www.willamettebridge.org) or follow @OregonDOT on Twitter. Visit [www.TripCheck.com](http://www.TripCheck.com) for current travel conditions.