



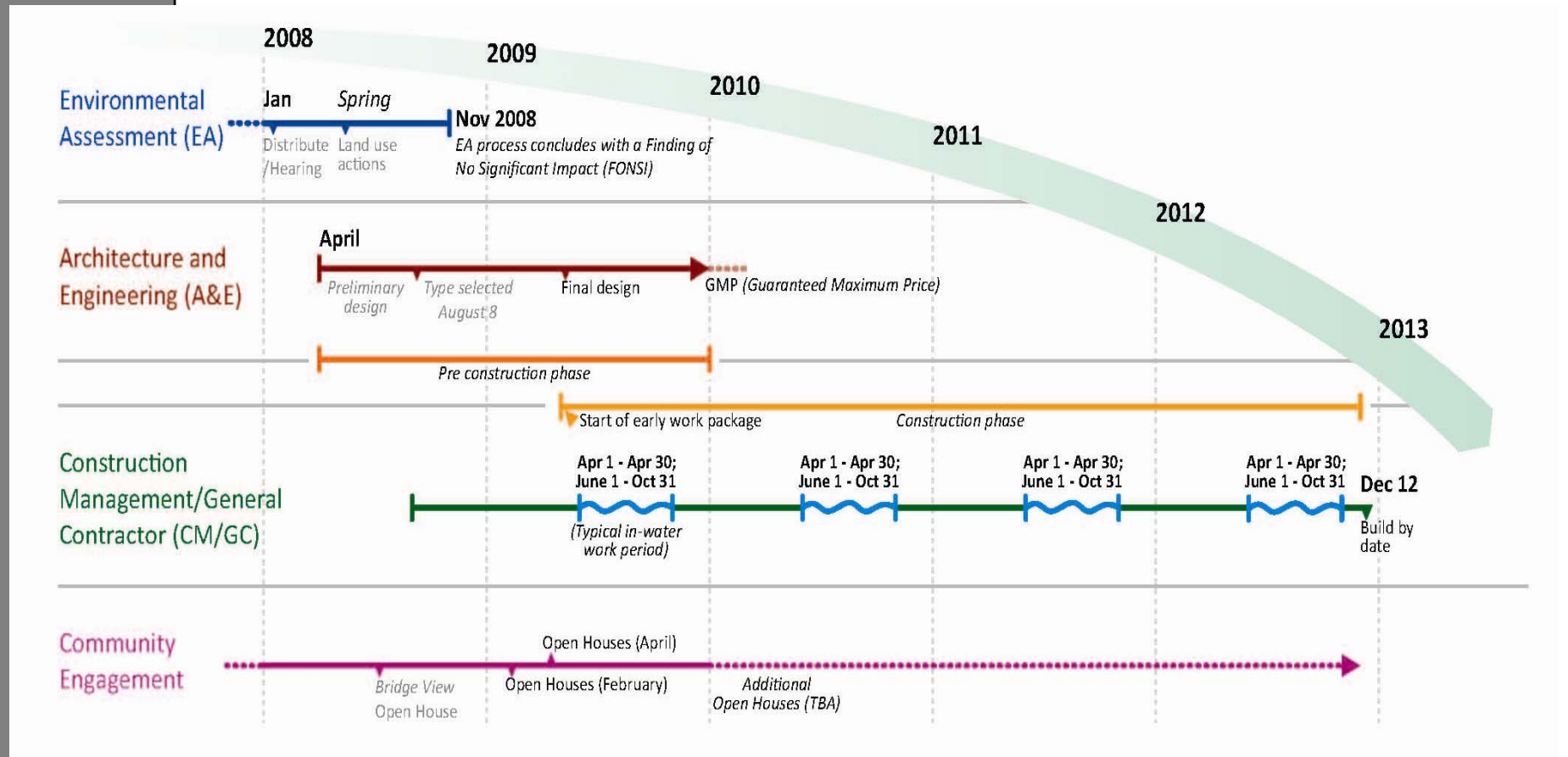
I-5 Willamette River Bridge

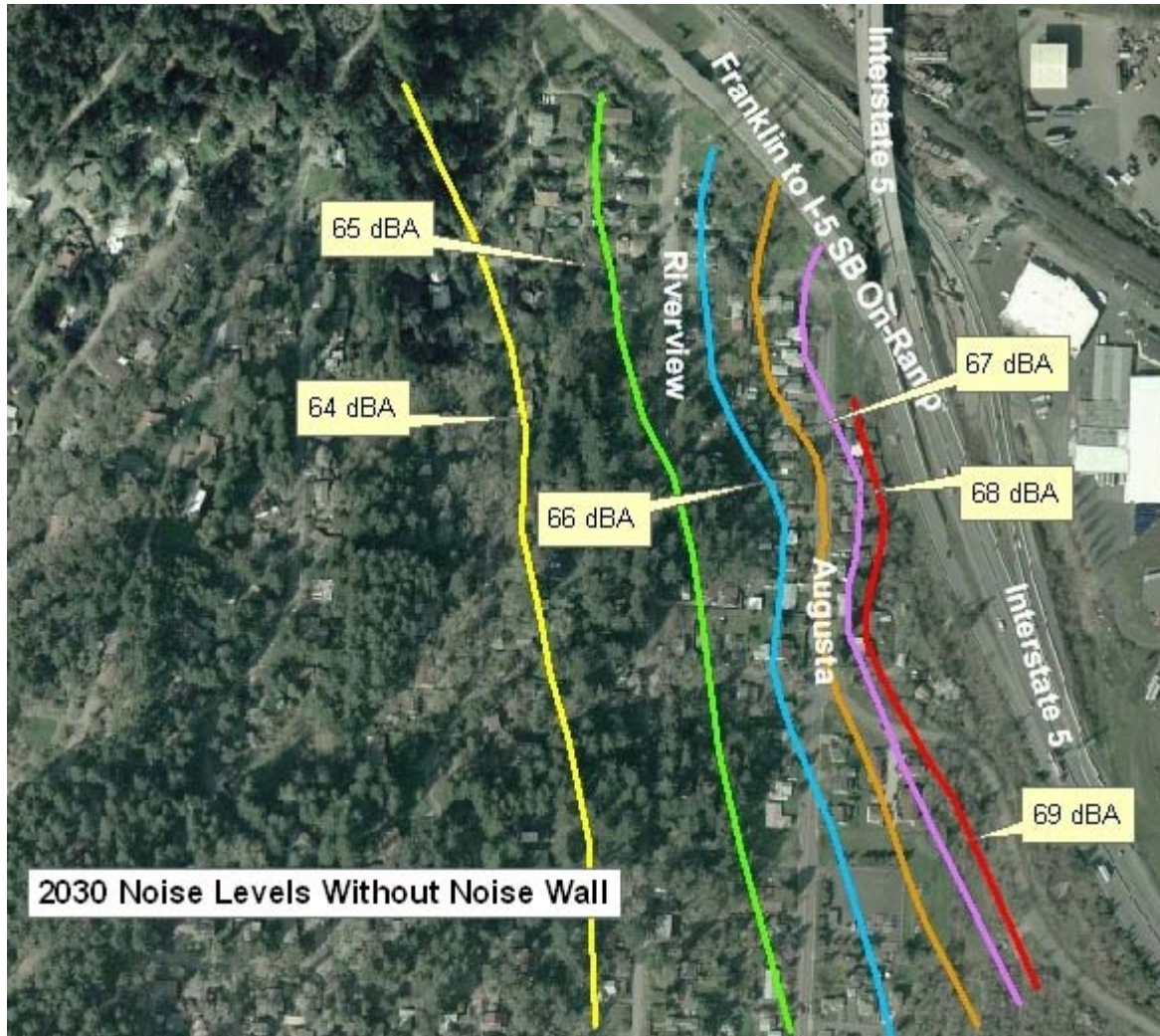
***Laurel Hill Valley Citizens
Neighborhood Association
Sound Wall
Presentation***

April 7, 2009



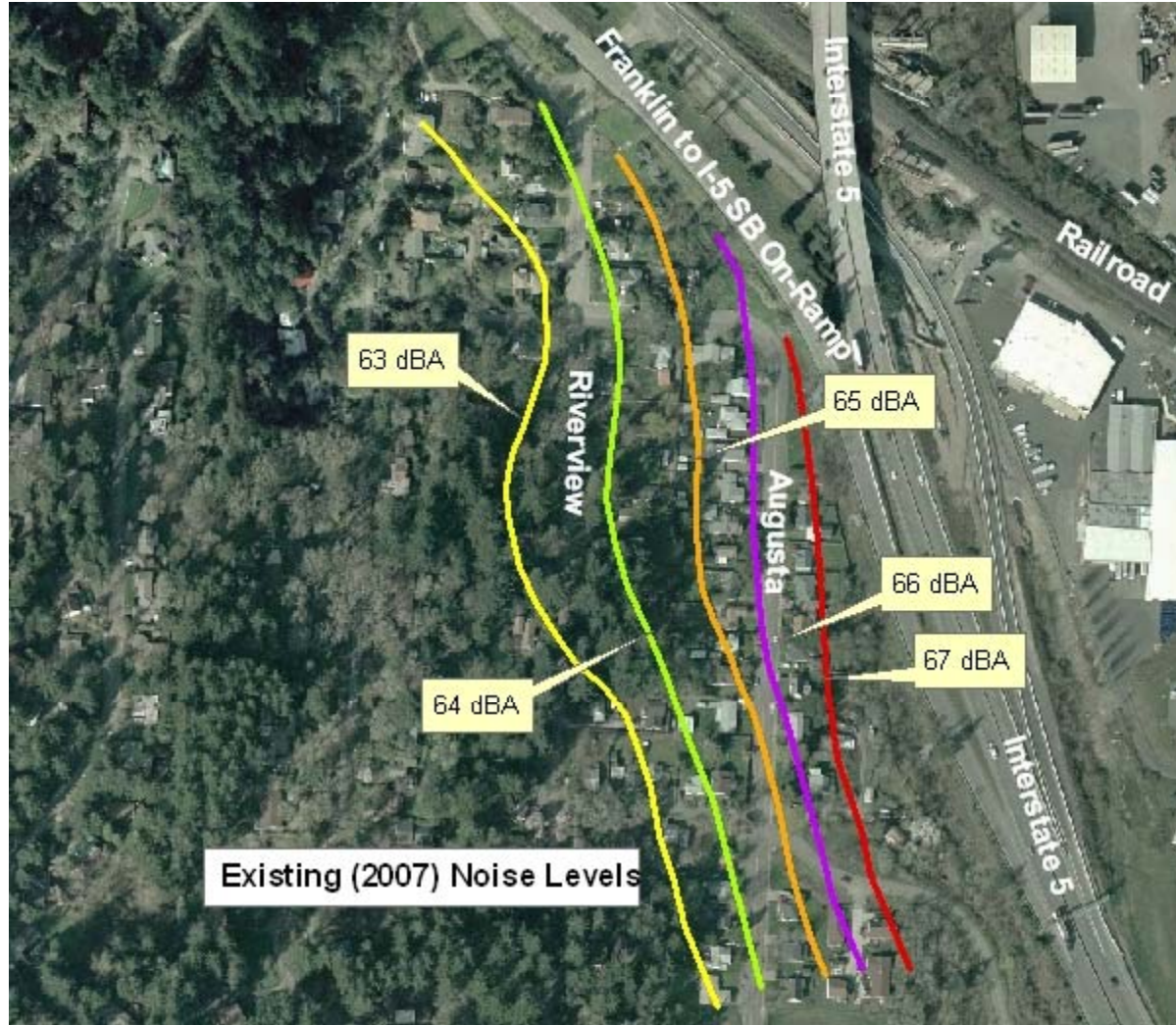
Project schedule







Oregon Department of Transportation

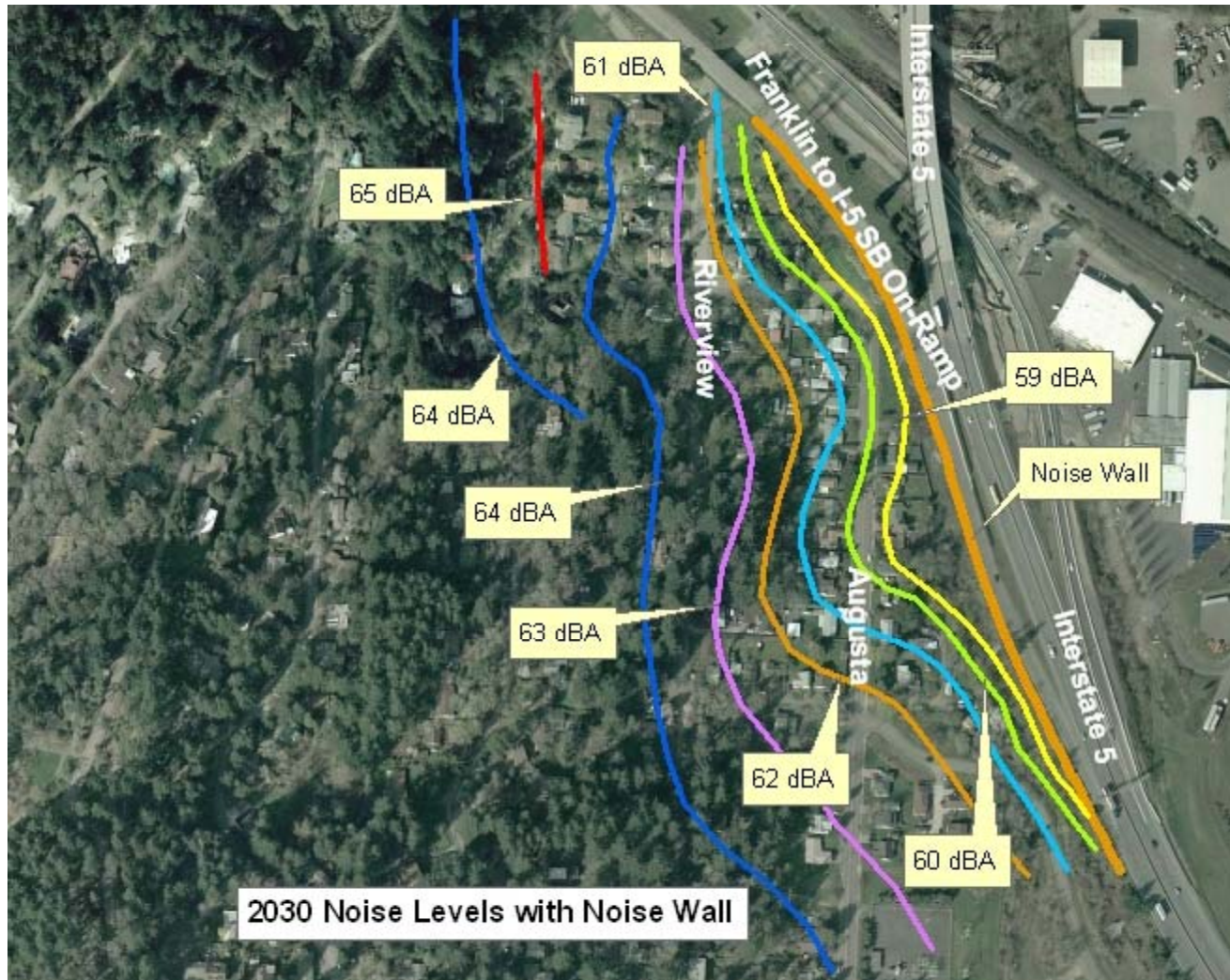




Oregon Department of Transportation



I-5 Willamette River
Bridge
Eugene & Springfield

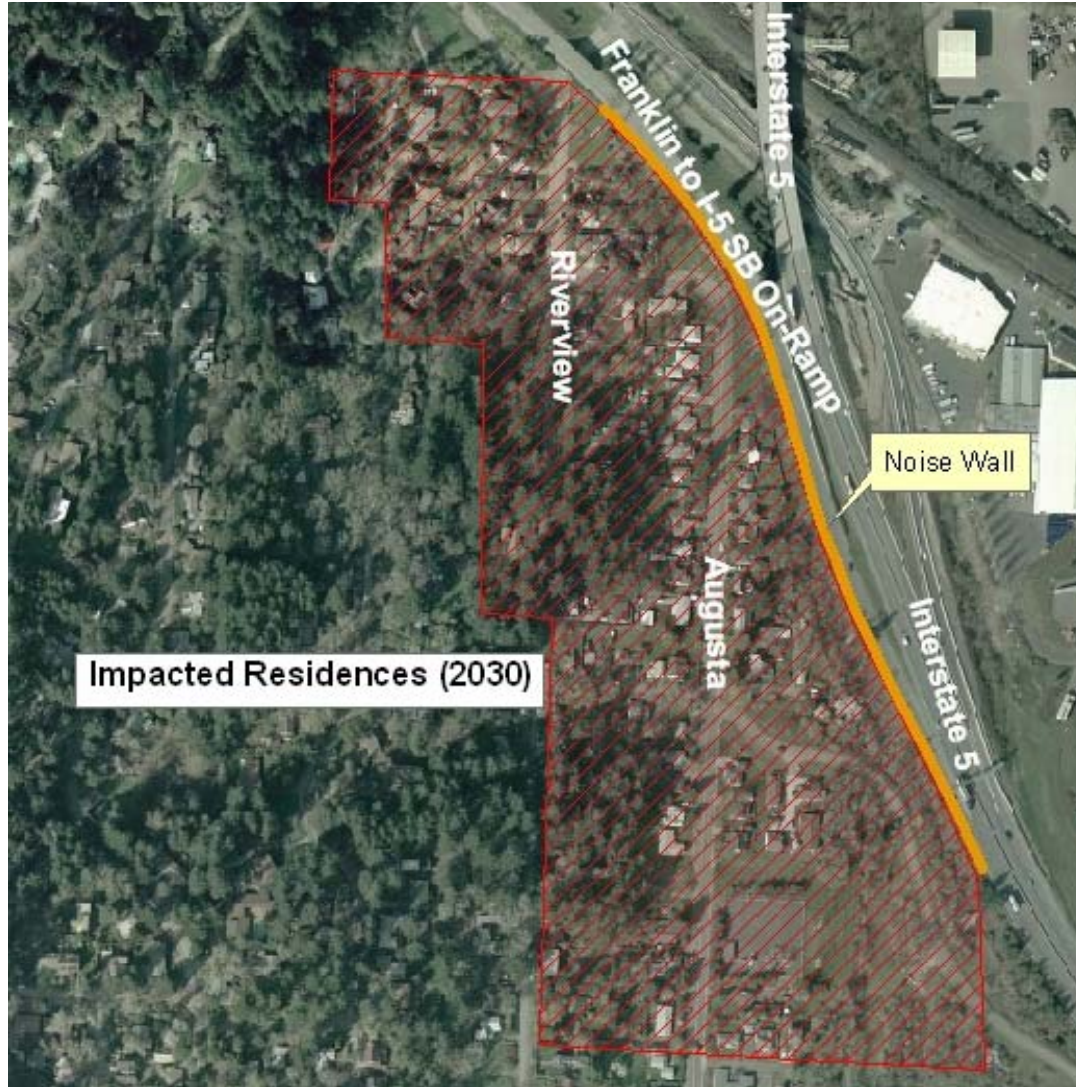




Oregon Department of Transportation



I-5
Willamette River
Bridge
Eugene & Springfield



Impacted Residences (2030)

Riverview

Augusta

Franklin to I-5 SB On-Ramp

Interstate 5

Interstate 5

Noise Wall



Oregon Department of Transportation



I-5
Willamette River
Bridge
Eugene & Springfield

Current view

**I-5: WILLAMETTE RIVER BRIDGE - BUNDLE 220
VIEW FROM SB RAMP LOOKING SOUTH - PHOTO 4**



04-03-2009



Oregon Department of Transportation



I-5
Willamette River
Bridge
Eugene & Springfield

View with rendering of proposed wall

I-5: WILLAMETTE RIVER BRIDGE - BUNDLE 220
VIEW FROM SB RAMP LOOKING SOUTH - PHOTO 4

OREGON DEPARTMENT OF TRANSPORTATION
CONSTRUCTION
DIVISION
www.oregon.gov

Corporate Office: 800 COUNTY CLUB ROAD, SUITE 1000, SEASIDE, OREGON 97138-4000
503 574 8800 FAX: 503 574 8801
2000 WASHINGTON STREET, SUITE 100, LAKE OSWEGO, OREGON 97035-4000
503 574 8800 FAX: 503 574 8801
1200 POPP LANE, MEDFORD, OREGON 97504-0001





Oregon Department of Transportation



I-5
Willamette River
Bridge
Eugene & Springfield

Current view





Oregon Department of Transportation



I-5
Willamette River
Bridge
Eugene & Springfield

View with rendering of proposed wall





Oregon Department of Transportation



I-5
Willamette River
Bridge
Eugene & Springfield

Current view





Oregon Department of Transportation



I-5
Willamette River
Bridge
Eugene & Springfield

View with rendering of proposed wall

I-5: WILLAMETTE RIVER BRIDGE - BUNDLE 220
VIEW FROM SB RAMP LOOKING NORTH - PHOTO 6

OREGON DEPARTMENT OF TRANSPORTATION
CONSULTING ENGINEERS
CORPORATION
1000 NE BROADWAY, SUITE 1000, PORTLAND, OREGON 97232-3000
WWW.ODOT.OREGON.GOV



04-03-2008



Oregon Department of Transportation



I-5
Willamette River
Bridge
Eugene & Springfield

Current view

**I-5: WILLAMETTE RIVER BRIDGE - BUNDLE 220
VIEW FROM AUGUSTA ST. LOOKING S.E. - PHOTO 7**

OREGON DEPARTMENT OF TRANSPORTATION
Consulting Engineers
1200 POLK AVENUE, MEDFORD, OREGON 97504
503-753-8300
WWW.ODOT.OREGON.GOV



04-03-2006



Oregon Department of Transportation



I-5
Willamette River
Bridge
Eugene & Springfield

View with rendering of proposed wall





Oregon Department of Transportation



I-5
Willamette River
Bridge
Eugene & Springfield

Current view





Oregon Department of Transportation



I-5
Willamette River
Bridge
Eugene & Springfield

View with rendering of proposed wall





Oregon Department of Transportation



I-5
Willamette River
Bridge
Eugene & Springfield

Current view





Oregon Department of Transportation



I-5
Willamette River
Bridge
Eugene & Springfield

View with rendering of proposed wall





Oregon Department of Transportation



I-5
Willamette River
Bridge
Eugene & Springfield

Current view

I-5: WILLAMETTE RIVER BRIDGE - BUNDLE 220
VIEW FROM AUGUSTA ST. LOOKING EAST - PHOTO 10

OREGON DEPARTMENT OF TRANSPORTATION
CORPORATE OFFICE: 800 EXHIBIT CENTER DRIVE, SUITE 1000, EUGENE, OREGON 97401
503 586-6000 FAX: 503 586-6001
WWW.ODOT.OREGON.GOV
CONTRACTING OPPORTUNITIES: 503 586-6000
1-800-455-4545
WWW.ODOT.OREGON.GOV



04-03-2008



Oregon Department of Transportation



I-5
Willamette River
Bridge
Eugene & Springfield

View with rendering of proposed wall

I-5: WILLAMETTE RIVER BRIDGE - BUNDLE 220
VIEW FROM AUGUSTA ST. LOOKING EAST - PHOTO 10

OREGON DEPARTMENT OF TRANSPORTATION
CONSULTING ENGINEERS
COMPASS CONSULTING ENGINEERS, INC. 1000 NE 10TH AVENUE, SUITE 1000, PORTLAND, OREGON 97232-4000
1000 NE 10TH AVENUE, SUITE 1000, PORTLAND, OREGON 97232-4000
WWW.COMPASS-CE.COM



04-03-2006



Oregon

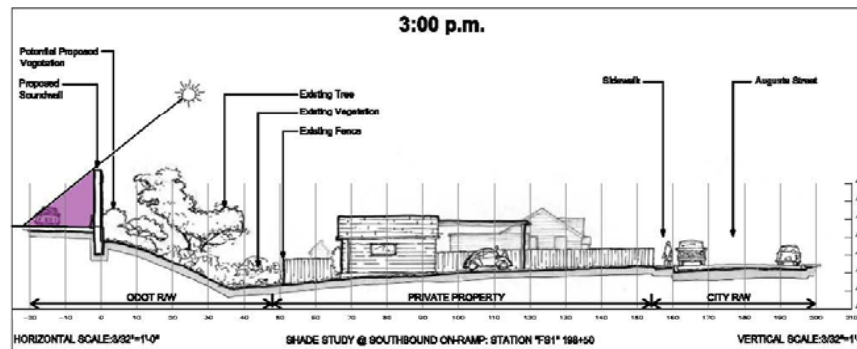
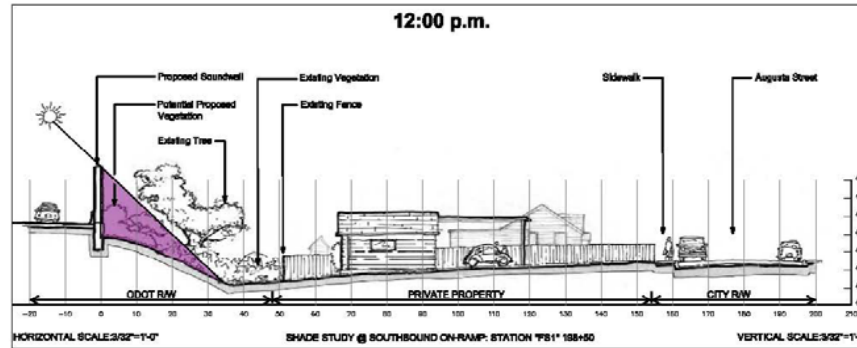
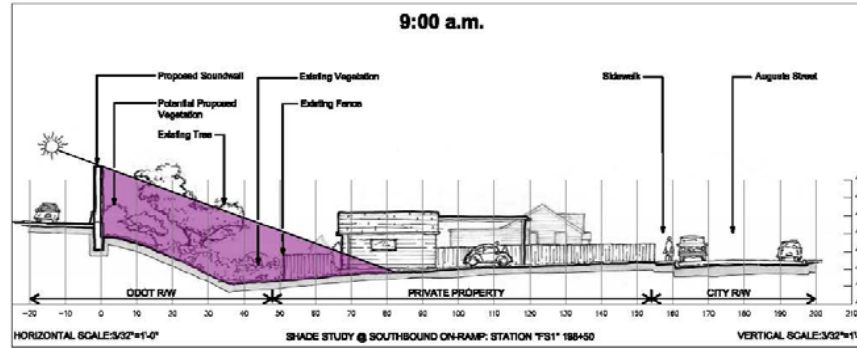
ODOT I-5 WILLAMETTE RIVER BRIDGE

SHADOW STUDY

APRIL 07, 2009



I-5 Willamette River Bridge Eugene & Springfield



I-5 SOUTHBOUND ON-RAMP SOUNDWALL & RETAINING WALL SHADOW STUDY

March 21



Oregon

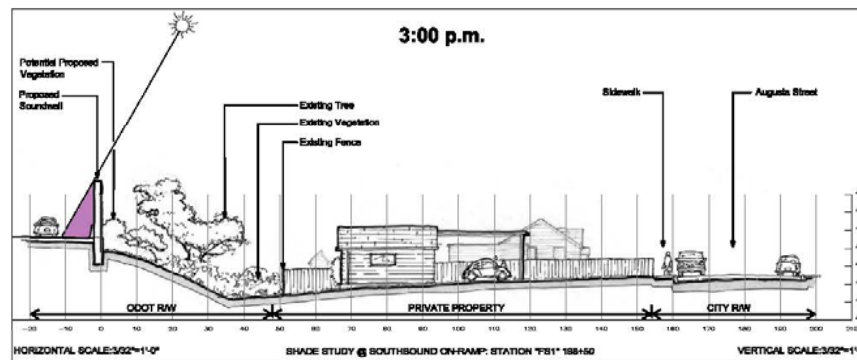
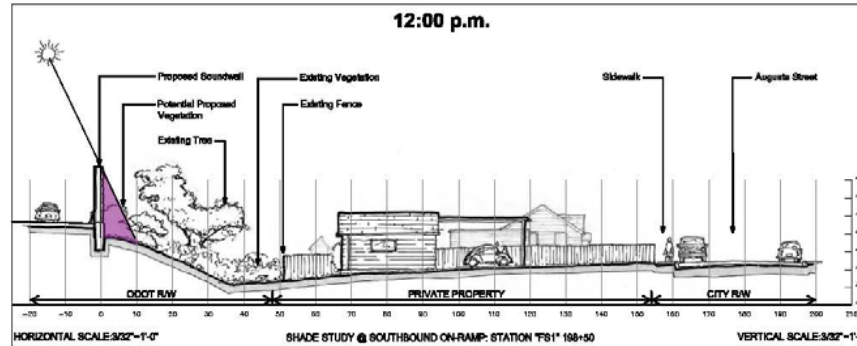
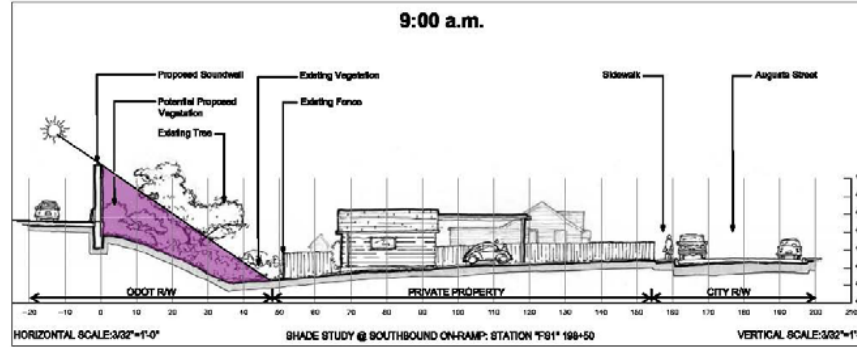
ODOT I-5 WILLAMETTE RIVER BRIDGE

SHADOW STUDY

APRIL 07, 2009



I-5 Willamette River Bridge Eugene & Springfield



I-5 SOUTHBOUND ON-RAMP SOUNDWALL & RETAINING WALL SHADOW STUDY

June 21



Oregon

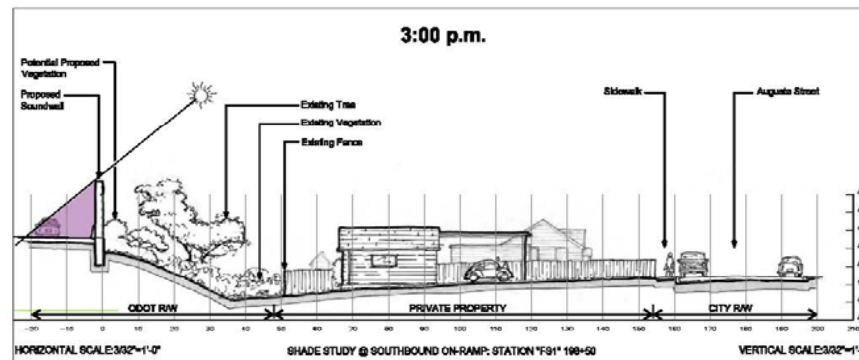
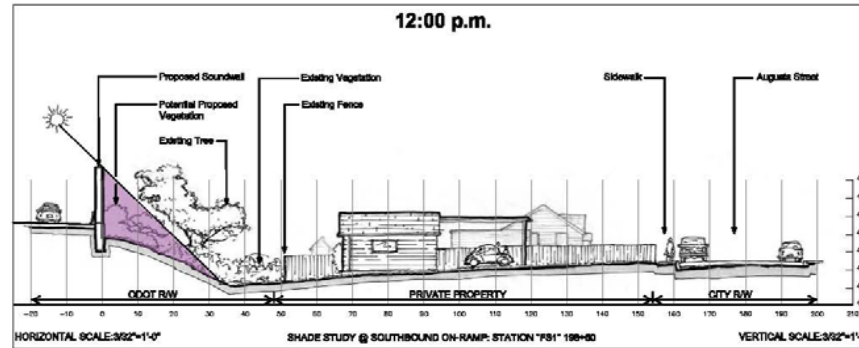
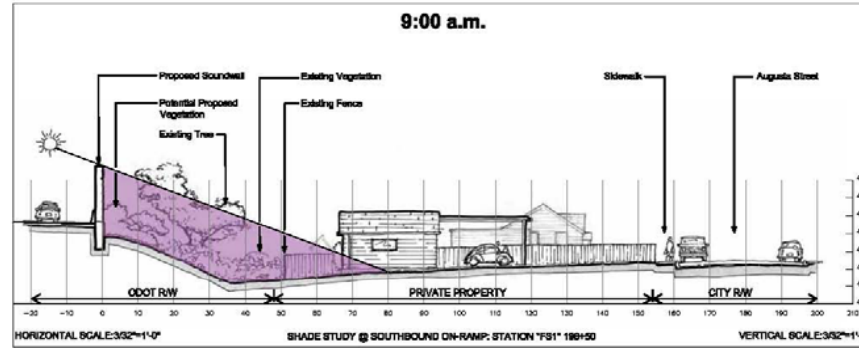
ODOT I-5 WILLAMETTE RIVER BRIDGE

SHADOW STUDY

APRIL 07, 2009



I-5 Willamette River Bridge Eugene & Springfield



I-5 SOUTHBOUND ON-RAMP SOUNDWALL & RETAINING WALL SHADOW STUDY

September 21



Oregon

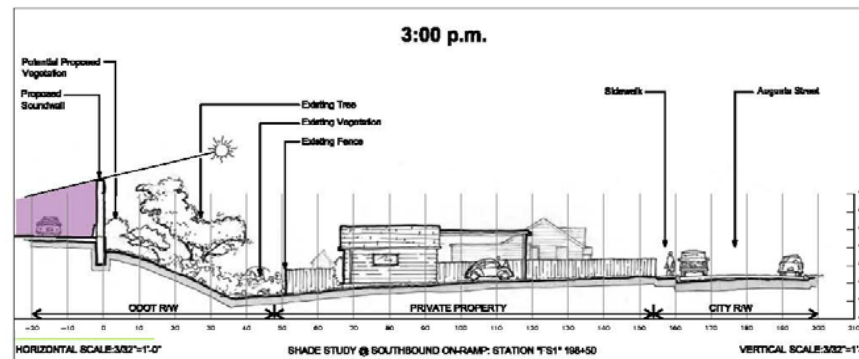
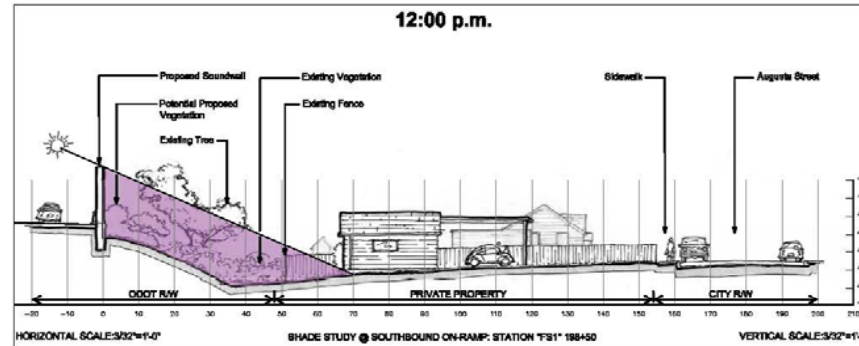
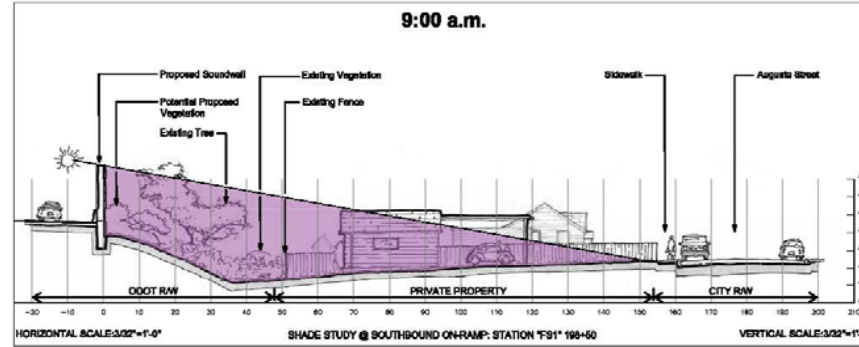
ODOT I-5 WILLAMETTE RIVER BRIDGE

SHADOW STUDY

APRIL 07, 2009



I-5 Willamette River Bridge Eugene & Springfield



I-5 SOUTHBOUND ON-RAMP SOUNDWALL & RETAINING WALL SHADOW STUDY

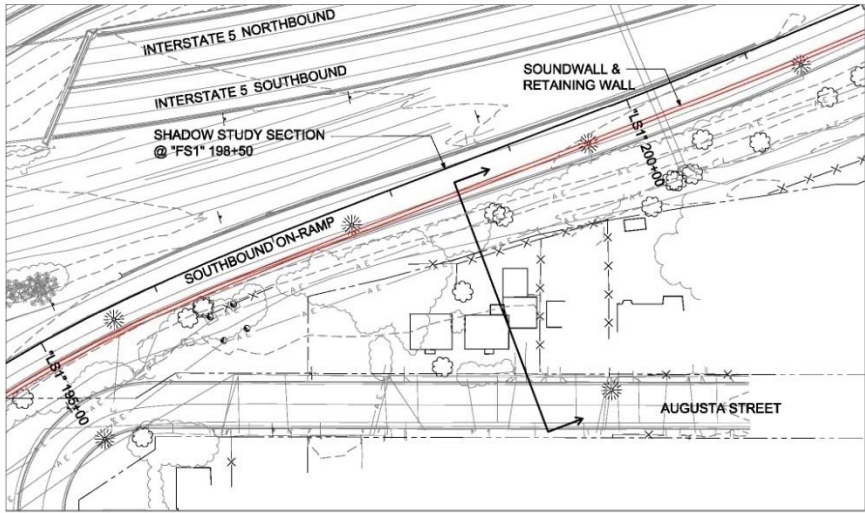
December 21

ODOT I-5 WILLAMETTE RIVER BRIDGE SHADOW STUDY

APRIL 07, 2009



AERIAL SHADE STUDY @ SOUTHBOUND ON-RAMP: STATION "FS1" 198+50 SCALE: 1"=30'-0" 0' 15' 30' 60'



SURVEY SHADE STUDY @ SOUTHBOUND ON-RAMP: STATION "FS1" 198+50 SCALE: 1"=30'-0" 0' 15' 30' 60'

I-5 SOUTHBOUND ON-RAMP SOUNDWALL & RETAINING WALL SHADOW STUDY

AERIAL & SURVEY



For more information, contact:

Joe Harwood, ODOT Region 2 Public Information Officer
(541) 726-2442, Joseph.D.Harwood@odot.state.or.us

Megan Banks, Willamette River Bridge Public
Involvement
(541) 682-7413, mbanks@lcog.org

Visit the project web site:

www.WillametteBridge.org

- Thank you -