

ZONING

Urban North Clackamas County

Clackamas County
Urban Growth Boundary
City Boundary
City of Damascus



20 September 2005

DATA LAYER SOURCES
 Title: Clackamas County Assessment & Taxation, March 2004
 Zoning, City Limits, and Mapping Product: Clackamas County GIS, March 2004
 Urban Growth Boundary: Boundary set by Metro/RLS, Dec. 2002

- Timber District (TBR)
- AG / Forest District (AG/F)
- Exclusive Farm Use (EFU)
- Rural Center SFR 1 acre (RA-1)
- Future Urban (FU-10)
- Rural Area SFR 2 acre (RA-2)
- Rural Res. Farm/Forest Sac (RRFF-5)
- Farm/Forest (FF-10)
- Urban Low Density Res (R-15, R-20 & R-30)
- Urban Low Density Res (R-8.5 & R-10)
- Single Family Residential (R-2.5 & R-5)
- Village Small Lot (VR-4/5)
- Village Standard Lot (VR-5/7)
- Urban Low Density (R-7)
- Medium Density Res (MR-1)
- Village Townhouse (VTH)
- Medium High Density Res (MR-2)
- Plan Medium Density Res (PMD)
- High Density Res. (HDR)
- Village Apartment (VA)
- Special High Density (SHD)
- Regional Center Special High Density (RCHD)
- Neighborhood Commercial (NC)
- Community Commercial (C-2)
- General Community (C-3)
- Planned Commercial (PC)
- Retail Commercial (RT)
- Village Commercial (VC)
- Rural Commercial (RC)
- Rural Tourist Commercial (RTC)
- Low Traffic Impact Com. (LTIC)
- Regional Center Commercial (RCC)
- Corridor Commercial (CC)
- Office Apartment (OA)
- Office Commercial (OC)
- Regional Center Office (RCO)
- Village Office (VO)
- General Industrial (I-3)
- Campus Industrial (CI)
- Light Industrial (I-2)
- Campus Industrial Park (CIP)
- Business Park (BP)
- Rural Industrial (RI)
- Planned Mixed Use (PMU-1, PMU-2, PMU-3)
- Village Community Service (VCS)
- Open Space Management (OSM)
- Incorporated Cities



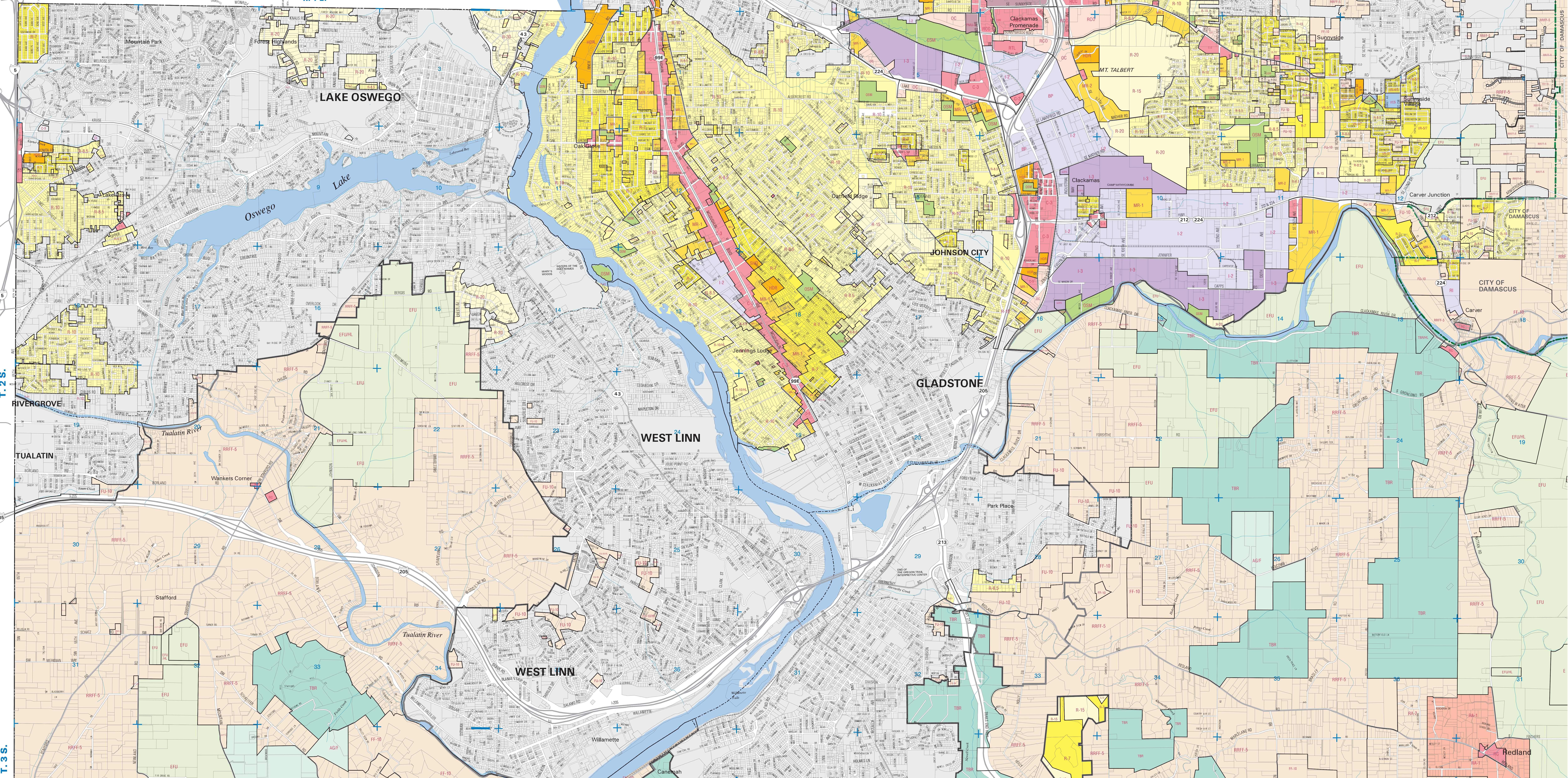
Scale = 1:15840
 Scale: 1" = 1330'

R. 1 E.

R. 1 E.

MULTNOMAH COUNTY

R. 2 E. PORTLAND



T. 2 S.

T. 3 S.

URBAN ZONING MAP

CITY OF DAMASCUS

CITY OF DAMASCUS

CITY OF DAMASCUS

CITY OF DAMASCUS

URBAN ZONING MAP