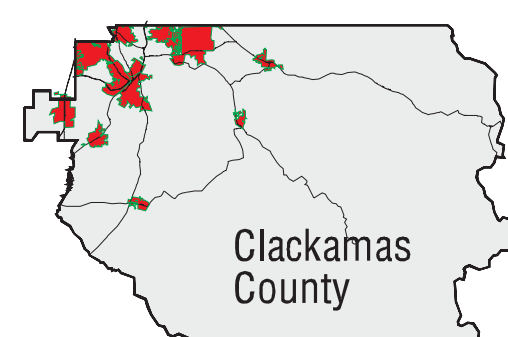
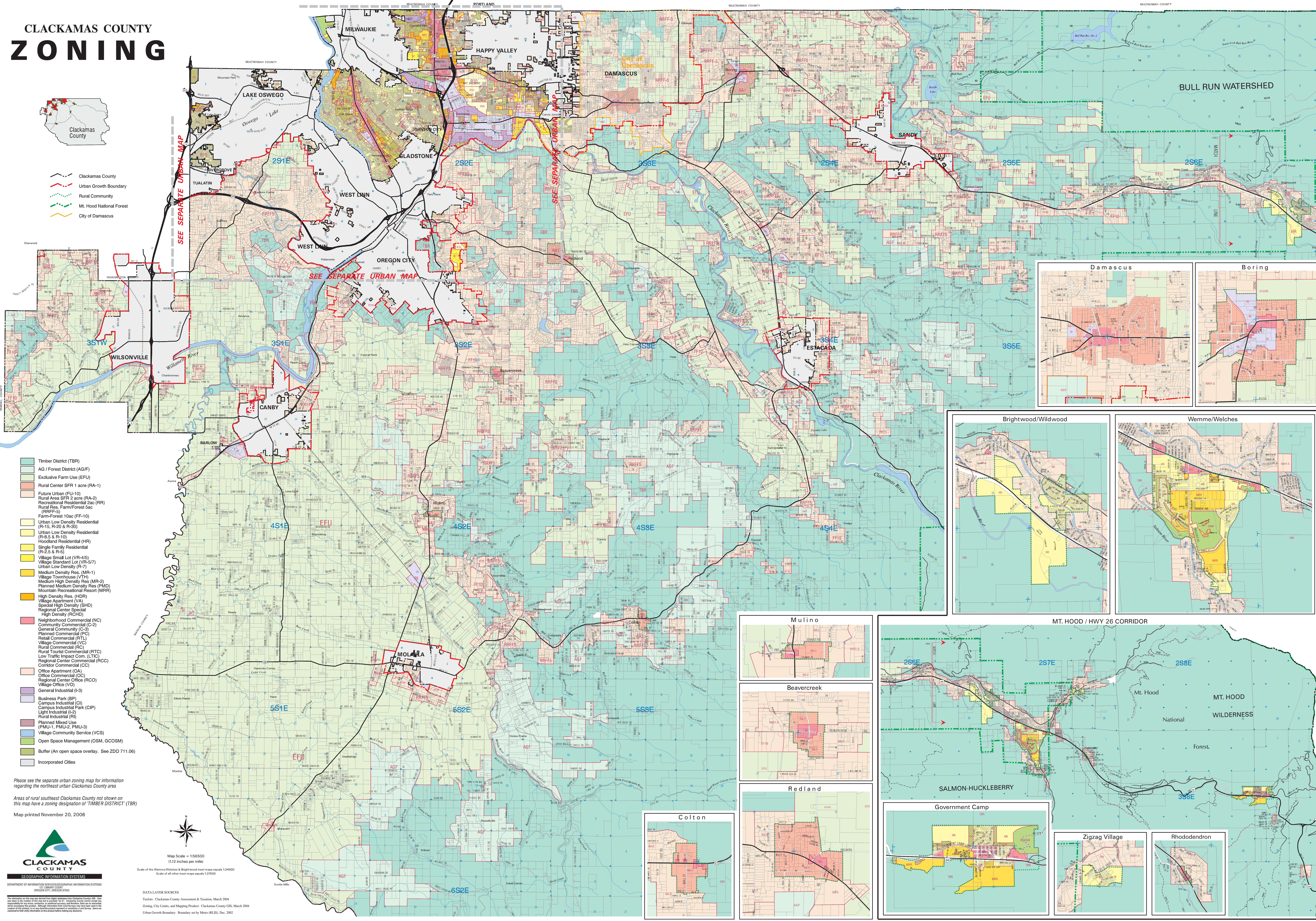
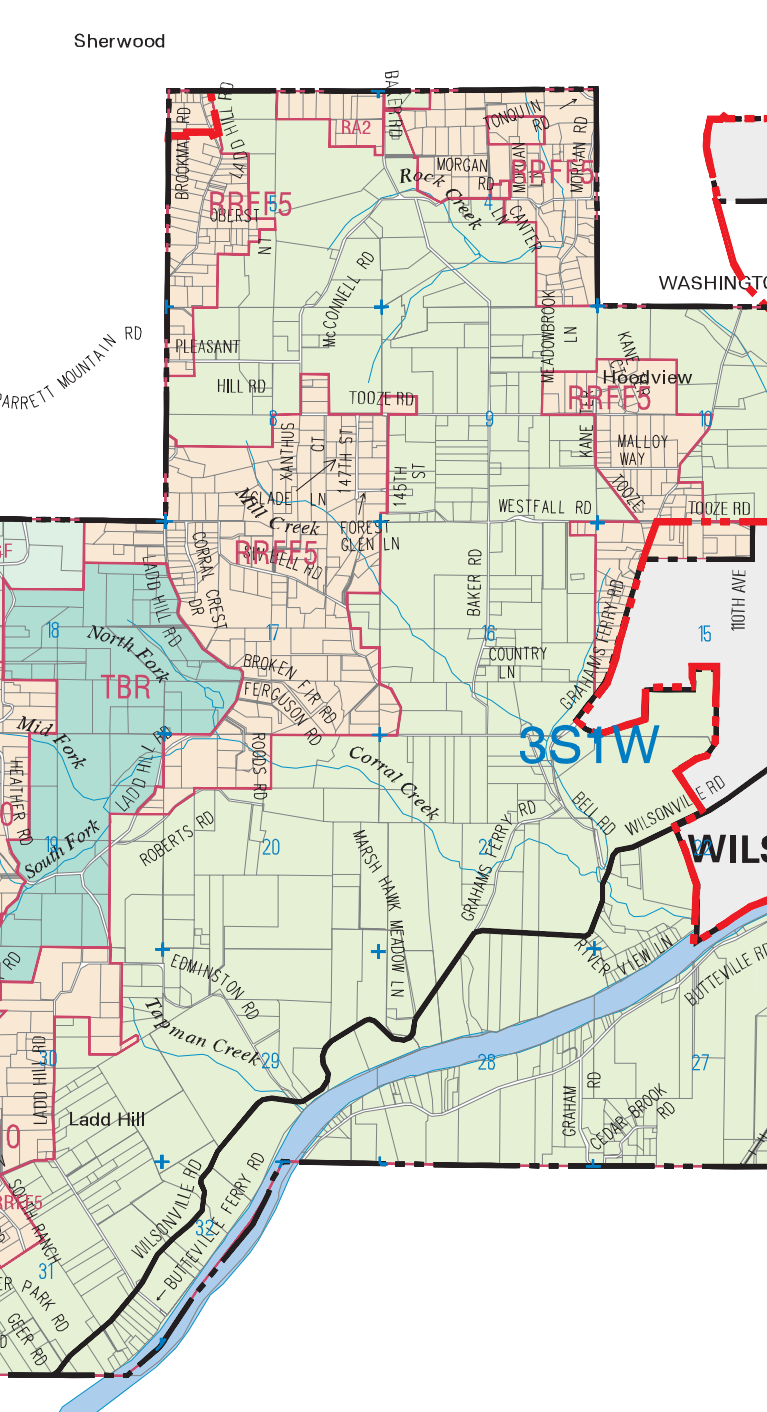


# CLACKAMAS COUNTY ZONING



- Clackamas County Boundary
- Urban Growth Boundary
- Rural Community
- Mt. Hood National Forest
- City of Damascus

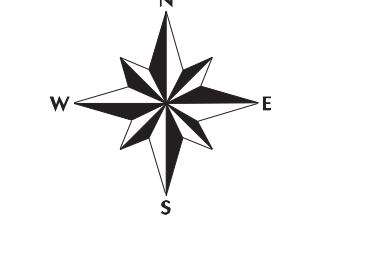


- Timber District (TBR)
- AG / Forest District (AG/F)
- Exclusive Farm Use (EFU)
- Rural Center SFR 1 acre (RA-1)
- Future Urban (FU-10)
- Rural Area SFR 2 acre (RA-2)
- Recreational Residential Zec (RR)
- Rural Res. Farm/Forest 5ac (RRFF-5)
- Farm-Forest 10ac (FF-10)
- Urban Low Density Residential (R-15, R-20 & R-30)
- Urban Low Density Residential (R-8.5 & R-10)
- Hoodland Residential (HR)
- Single Family Residential (R-2.5 & R-5)
- Village Small Lot (VR-4/5)
- Village Standard Lot (VR-5/7)
- Urban Low Density (R-7)
- Medium Density Res. (MR-1)
- Village Townhouse (VTH)
- Planned Medium Density Res (PMD)
- Mountain Recreational Resort (MRR)
- High Density Res. (HDR)
- Village Apartment (VA)
- Special High Density (SHD)
- Regional Center Special High Density (RCHD)
- Neighborhood Commercial (NC)
- Community Commercial (C-2)
- General Commercial (C-3)
- Planned Commercial (PC)
- Retail Commercial (RTL)
- Village Commercial (VC)
- Rural Commercial (RC)
- Rural Tourist Commercial (RTC)
- Low Traffic Impact Com. (LTI)
- Regional Center Commercial (RCC)
- Corridor Commercial (CC)
- Office Apartment (OA)
- Office Commercial (OC)
- Regional Center Office (RCO)
- Village Office (VO)
- General Industrial (I-3)
- Business Park (BP)
- Campus Industrial (CI)
- Campus Industrial Park (CIP)
- Light Industrial (L-2)
- Rural Industrial (RI)
- Planned Mixed Use (PMU-1, PMU-2, PMU-3)
- Village Community Service (VCS)
- Open Space Management (OSM, GCOSM)
- Buffer (An open space overlay. See ZDO 711.06)
- Incorporated Cities

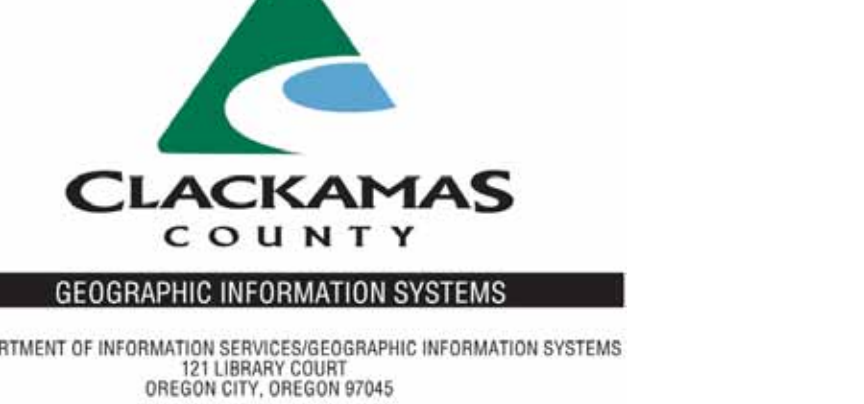
Please see the separate urban zoning map for information regarding the northeast urban Clackamas County area

Areas of rural southeast Clackamas County not shown on this map have a zoning designation of TIMBER DISTRICT (TBR)

Map printed November 20, 2006



Map Scale = 1:56,500  
(1/2 inch equals 1 mile)  
Scale of the Wemme/Wildwood & Brightwood inset maps equals 1:24,000  
Scale of all other inset maps equals 1:12,500



DATA LAYER SOURCES  
Taxlots: Clackamas County Assessment & Taxation, March 2004  
Zoning: City Limits and Mapping Project - Clackamas County GIS, March 2004  
Urban Growth Boundary: Boundary set by Metro (RELS), Dec. 2002

