

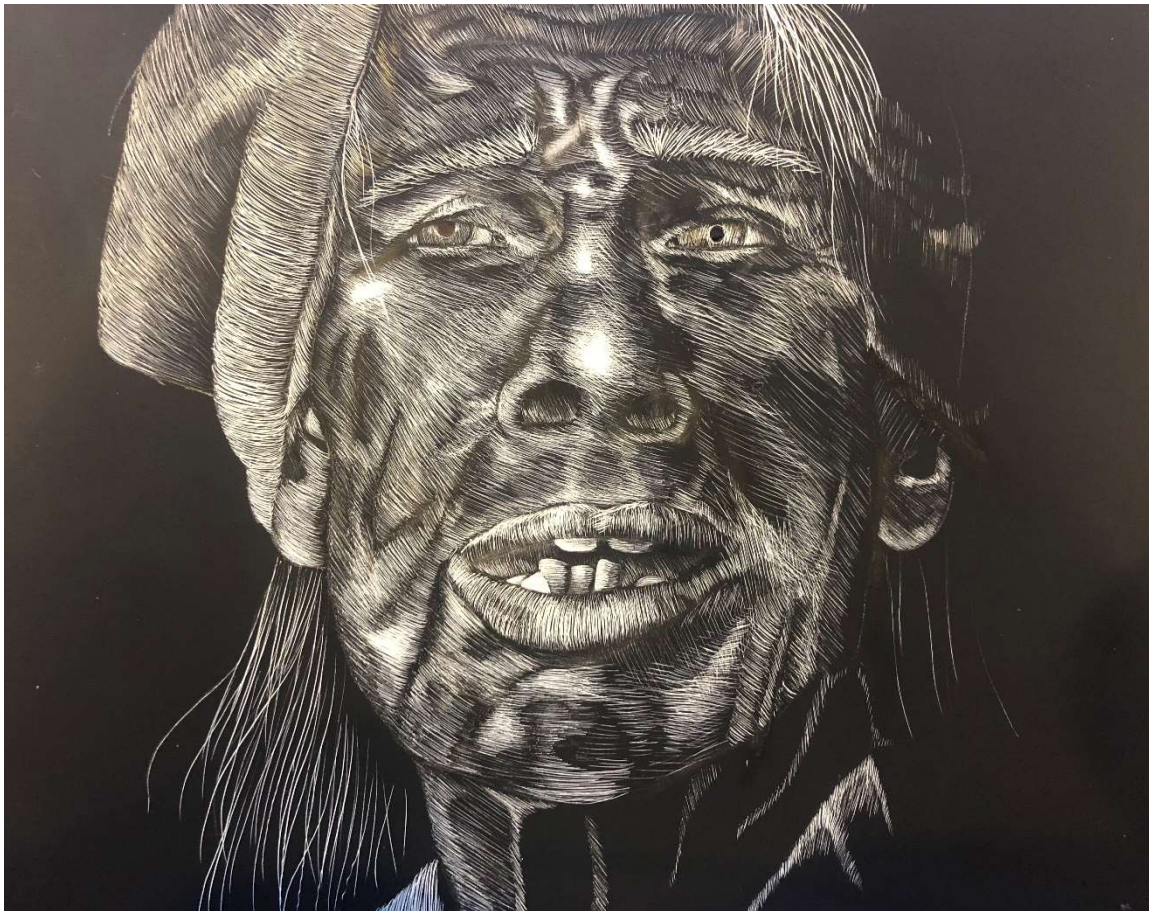


## Cover Art—“The Woman”

Clara Hollowgrass, Psychology\*

This piece is part of a series I did which focuses on the refinement found in a face. The medium is scratchboard, which I made myself from wood and black and white paint, and I used an old, empty fountain pen as my carving tool. I focus on the face because it is the part of people that we usually judge first. Ancient humans used a person’s smile or eyes to distinguish between friend and foe. But why do we still make such snap judgements today, and what could we be missing by relying on the physical appearance of solely a face? What is going on beneath someone’s surface? What about them can we not see? The process of making art on scratchboard itself exemplifies this concept. Through the action of scraping back layers to reveal a new dimension on the board, I mimicked the process of getting familiar with a person. You work to look beneath the surface, realizing that there is more than meets the eye.

---



\*Clara Hollowgrass is a freshman psychology major. She enjoys the outdoors as well as the exploration of creative expression. She aspires to partake in public relations or community outreach after her undergraduate degree is complete. Please direct correspondence to [clarah@uoregon.edu](mailto:clarah@uoregon.edu)