

Alumni Art League  
Edition

# Old Oregon

Vol. XVI

April, 1935

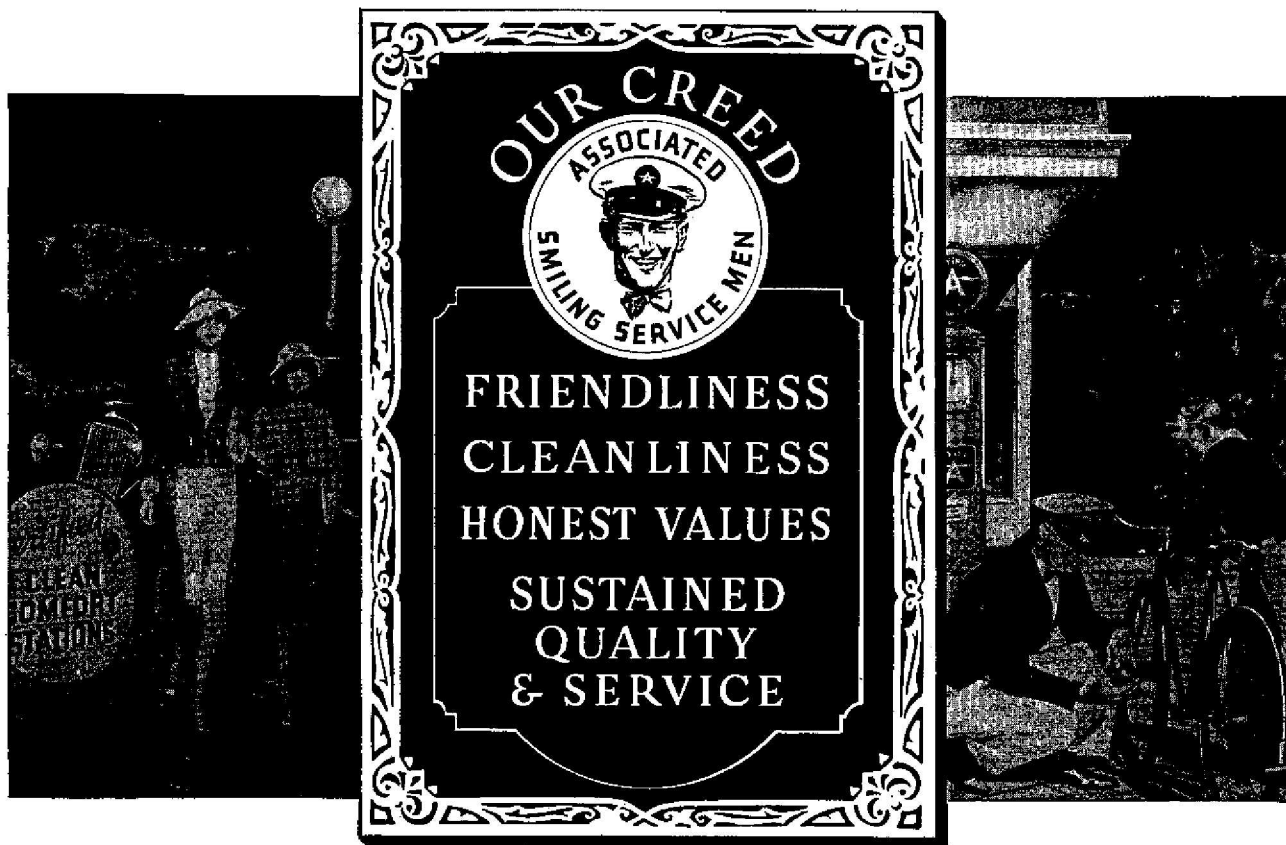
No. 9



Public Lib  
Eugene, Ore

"ST. MARLO"

Drypoint etching by Louis C. Rosenberg, internationally famous etcher and architect, displayed at first annual University Alumni Art League exhibition.



# OUR CREED—

means a lot to us—

means better motoring to you—

A Creed to work by! An ideal of service to live up to! That is what our Creed means to us. The words carved upon it express our sincere desire to give you the best there is in us—and to have that “best” please you more than any other service.

**OUR CREED.** To us it is the good old fashioned quality of being a good neighbor—expressed in the friendly interest in you and your car. **CLEANLINESS.** It is evidenced in the appearance of each dealer’s station, rest rooms and his person. **HONEST VALUES.** They are the very foundations of

our business. **SUSTAINED QUALITY PRODUCTS.** They tell their own story in performance. **SERVICE—to us is the pleasure of giving pleasure.**

That is what the Creed means to us. Won’t you give us the chance to show what it can mean to you? Ask any Smiling Associated Dealer for a Credit Courtesy Card and for more miles of motoring pleasure, use his products and services: *Aero-type Flying A and Associated Aviation Ethyl Gasolines, Solvent-Refined Cylcol Motor Oil and Certified Clean Comfort Stations.*

*Your Smiling*  *Associated Dealer*

# Old Oregon

Published by the University of Oregon  
Alumni Association

Vol. XVI

April, 1935

No. 9

## NEWS AND COMMENT

By The Editor

### The Art League Edition

With this issue *Old Oregon* presents with some pride a special Alumni Art League edition. It is not so much the contents of the edition nor the style in which it is gotten up of which we are proud, as is the fact that the magazine is in reality a tangible expression of a growing alumni-consciousness on the part of the University's graduates.

In the newly formed Alumni Art League the Alumni Association has added a valuable adjunct to its program of extending the services of the University to its graduates, and conversely, of offering organized alumni support to the functions and needs of the University.

The good that the Alumni Art League can and is already doing for the School of Architecture and Allied Arts may not be a conscious effort on the part of the membership. Organized primarily to band together those alumni of the school in a common enterprise of artistic expression and fellowship, based on a unity of interest, the many benefits of the League to the individual members and the University can not be easily classified. The prestige of an educational unit can be measured fundamentally only by the successes and personalities of its graduates. To organize a group of graduates of the calibre represented by the Art League adds, by the very impressiveness of numbers, to the prestige and popular pride in Oregon's School of Architecture and Allied Arts.

### Other Schools to Follow

It is *Old Oregon's* intention that future issues of the magazine shall be turned over to other academic departments and schools and their alumni. The Art League alumni have pointed a way for a new and more useful type of alumni organization and participation.

And to President Abbott Lawrence, to Mrs. Hodge, Stuart Biles, and other officers and members, we offer the full co-operation of the alumni office, the alumni magazine and the facilities and

experience of the general Alumni Association, in a most worthy undertaking.

— :: —

### Historical Material Wanted

Frederic S. Dunn, head of the Latin department, has been attempting to gather together old University records and documents which he uses in connection with a series of articles he has been writing for the *Emerald* this year on University history and historical anecdotes of former days on the campus. The attempt to gather this material has demonstrated a sad lack of adequate archives and files of historical documents and records. So now he is attempting, together with Miss Pauline Walton of the library staff, to gather material enough to form a creditable nucleus for an archives museum. He is especially interested in finding trace of the minutes and records of the old Laurean and Eutaxian societies. Any alumni who have material (such as commencement programs, class pictures, early day campus pictures, etc.) that might be added

to Professor Dunn's already sizeable collection are urgently requested to communicate with him. All material sent in will be credited to its donor and may either be loaned or given to the University. As the University extends its life well along into its second half-century, it becomes more and more important to collect and preserve a record of early campus life and activities.

— :: —

### Helping Hand Needed

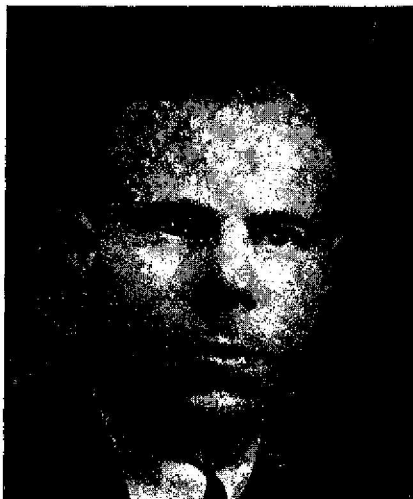
Under the capable direction of Miss Janet Smith, University employment secretary, and Dean of Personnel Onthank many of this year's graduating class will have jobs waiting for them upon leaving school. Also, many students are being furnished summer employment. Alumni assistance in reporting openings either for summer or permanent employment will be greatly appreciated by the Alumni Office.

— :: —

¶ *Old Oregon* is in receipt of two rather lengthy communications from alumni objecting to last month's comments on the compulsory-optional student fee situation. We regret that limitations of space, due to the special Art League material in this issue, prevents us from publishing these letters. *Old Oregon* solicits and encourages letters for publication from its readers. Lack of space, however, sometimes presents a problem, as at this time. Consideration of this problem in addressing letters to the magazine will be appreciated by the editor.

\* \* \*

¶ The editor just can't resist handing out a bit of editorial commendation to Mrs. Elsie Fitzmaurice Dickson, society editor of the *Pendleton East Oregonian*, who has contributed many news notes appearing in this issue, especially those of Pendleton alumni. If more alumni would send in these brief paragraphs about themselves and their alumni friends it would be a great aid in our efforts to publish as much news as possible about what alumni are doing.



### PORTLAND PREXY

Paul D. Hunt, '30, recently elected to the presidency of the Portland Alumni Association to succeed Bert S. Gooding, '26, who has served for two years.

stance Cole, ex-'25, water colors by Herbert Heywood, ex-'18, Stuart Biles, ex-'25, and Lowell Anderson, '34, pastels by Marian Serebrennikov and Forrest Evans, ex-'29, a small still life also by Forrest Evans, book plates and sketches by Anita Kellogg, ex-'28, a poster and book plate by Maxine Bradbury Brown, ex-'29, MacBeth stage designs by Fred Harris, director of Portland civic theater productions, and small sketches in oil and pencil by Glenn Gardiner, '31.

## DEPARTMENTS

### Architecture

An inventory of the department of architecture will disclose the number of students, the amount of floor space, the staff of instructors and a curriculum, but will also include the school as a functioning organization based on continuing ideals.

Competent practicing architects, possessed with imagination, the ability to solve functional, technical and structural problems of building, to judge the influences determining the character of structures, and to appreciate the relation of architecture to socialized life, are the aim of the department. Pure artistry is likewise fostered in the interest of handsome and appropriate architecture.

Throughout the five years of the



"GUATE MALICAN"  
A woodblock by Ray Bethers, ex-'25, of San Francisco; displayed at the Art League exhibition.

University course, problems in practical designing are constant studies. The complexity of these problems is increased with each year's advance. Supporting the major work in design

### DEAN'S MESSAGE

To the Alumni and former students of the School of Architecture and Allied Arts:

This last year, 1934, Grant La Farge, the New York architect who is the son of John La Farge, the painter, visited the school as chairman of the architect's committee appointed by President Nicholas Butler of Columbia University to make recommendations regarding the reorganization of the school of architecture at Columbia. After his visit he wrote:

"I shall say, of all those I have seen, the school at Oregon is the liveliest, the happiest and the most significant."

The reorganized Columbia has in many ways followed Oregon as a result of Mr. La Farge's visit and study.

In spite of conditions that tested the courage and the soul about to the breaking point, the staff has carried on with amazing spirit. The high morale you know has been maintained even though salaries were severely cut, and budgets became inadequate. Other institutions with higher salary rates are offering attractive openings, but so far none of the staff has left us to take advantage of them.

Under the unification plan, landscape architecture was assigned to the school of architecture and allied arts. This has rounded out our field and strengthened both architectural design and landscape architecture. The fine spirit of collaboration which has dominated both the college and university groups is to be commended and indicates what can be accomplished when human relationships are properly adjusted.

I congratulate the alumni on the fine showing made in their first exhibition. We at the schools look forward to future exhibitions and it is good to know that the spirit of team play and good fellowship which marked your life as students around the Art Court at the University now finds a place in the new alumni organization.

When you can, look in on the school. You will find the old welcome waiting for you.

Sincerely, Dean Lawrence.

are the courses presenting the special and detailed phases of architecture, such as historical, constructional, technical and professional or ethical.

Architectural graduates of the University have achieved notable success in this country and abroad. Ten of them have been granted scholarships in the graduate school of the Massachusetts Institute of Technology in the past five years. For the past three years that institution's coveted annual award, the

Chamberlin prize, has gone to Oregon men.

The Ion Lewis traveling scholarship, endowed in 1930 by the late Portland architect whose name it bears, provides for a year's travel and study abroad to the winning Oregon graduate. It has been won by Linn A. Forrest, Abbott Lawrence, and this year by Harlow E. Hudson.

W. R. B. WILLCOX

— :: —

### General Arts

A three-fold purpose gives direction to the work of the department of general arts in the school of architecture and allied arts. The needs of students are recognized by the department in three fields. Industrial arts, such as ceramics, textiles, fashion illustration and stage design; the combination of work in two or more departments for more individualized courses of study, and the training of lecturers and special teachers in art appreciation.

No one aim or purpose can be stated for serving these highly diversified interests, which contain the nuclei of distinct divisions in future industrial and cultural development. In the industrial arts given, the department aids in the growth of the understanding necessary for successful work in modern crafts. In the laboratory, creative work is planned to fit the individual for producing pottery and decorative textiles in his own studio.

The demand for the highly individualized, hand wrought article will always exist, in spite of the increasing



### BILLIE !

Known to many hundreds of art students who have frequented the architecture building since 1917 when he first took up his duties as caretaker. His intimacy with an institution of which he has become an indispensable part began in 1914 when he helped to construct the building in which he now works.



attractions of modern industrial wares which are offered at prices which threaten the existence of craftsmen.

The important profession of the industrial designer will expand with the undoubted future development of Oregon resources. The field of industrial



**"THE HILLS"**

A distinctive watercolor by Maude I. Kerns, assistant professor of normal arts on the campus and a graduate of the class of '99. This was one of a number of watercolors, oils, woodcuts and linoleum prints shown at the Alumni Art League's exhibit this month by Miss Kerns, who is recognized as a leading Pacific coast artist.

design is already absorbing the creative talents of many architects, painters and sculptors. It is now recognized that the economic battles of the future will be fought in the design laboratory.

For the second group of students whose aims are less professional than cultural, all the resources of the school offer a wide choice. Foundation courses have already enabled resourceful students to enter into costume and commercial designing.

A third phase of general art specialization involves the training of students in the teaching of the nature and functions of the arts, as well as how to develop a sincere appreciation of them, to those not familiar with the arts. This most recent aspect of art specialization holds much promise since the problem of enriching an increasing leisure time has gained importance in American social life.

Training in this field must familiarize the student with a wide range of the world's art forms, and develop an understanding of human appreciative reactions, as well as a social consciousness with regard to these reactions. Its aim is an increased understanding between artists and public, with a mutual

comprehension of values.

Courses in drawing, painting, design, beginners' and advanced appreciation, and art history, together with studies in education, psychology and the social sciences, comprise the major part of this training.

VICTORIA AVAKIAN  
N. B. ZANE



### *Drawing and Painting*

The old studios of the department of drawing and painting have undergone quite a change during the past year as a result of painting and kalsomining and the work of gangs of carpenters. Walls and ceilings have been painted a high value and the atmosphere is one of airiness and light. A sense of spaciousness, together with the increased light, gives an importance and freshness to the canvases under way on the easels and leaning against the walls.

Instruction methods have changed, and a new artist has been added to the staff, David McCosh of Chicago, who assists Mrs. Louise Schroff, Andrew Vincent and Lance Hart in studio direction.

Canvases of large dimensions have been unusually popular—a canvas of 36 by 40 inches no longer excites comment. One canvas of five by seven feet, in fact, is commented on only for composition even by freshmen. Composition classes have interested themselves more than ever in campus and town material with resulting sincerity and honesty replacing studio-bound, formula mumbly repetition.

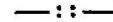
Large lower division drawing classes have done exciting things working from the figure, using white chalk on black paper and modeling directly. The work has a solidity and force strange to the drawings of beginning students. Models

have been increased in number, and four different classes now use them for their work. The lower division drawing group added a large sketch book to its equipment, and bits of fraternity life, of Saturday afternoon crowds, of the mill race, have been brought in for criticism.

A seriousness of purpose is easily sensed, as well as a new movement about the "court" towards a professional-like group of artists, a guild group, away from the "school" with "students" and "teachers." The government art projects under way throughout the country have given new hope for the artist, and discussion turns to walls to paint, to the new public interest in design of all forms.

The smell of oxatine, turpentine and paint, and the tap of the hammer as some one stretches a new canvas, these with the same old friendly atmosphere assure the returning students that, in spite of changes, the art "court" is the same old place.

ANDREW VINCENT.



### *Structural Architecture*

Some individuals are intrigued by the structural aspects of architecture rather than by the aesthetic. There is a lively interest in the questions of strength and stability. How is it possible to determine in advance the necessary sizes of beams and columns to insure this safety and stability? How may a tall chimney be constructed so that it will not tip over when struck by a heavy wind or a retaining wall constructed so the pressure of earth and water cannot make it slide or tip?

The answers to these and many more similar questions constitute the objectives of this branch of architecture. The approach to the problems is largely mathematical in character and therefore



ART SCHOOL — QUADRANGLE ENTRANCE

appeals to those who are fond of scientific research.

Since 1932, the two first years of the curriculum are given on the University of Oregon campus in the school of architecture and allied arts while the junior and senior years are given in the school of engineering on the Oregon State college campus.

PERCY P. ADAMS.

—:—

### Sculpture

Clay, long the plaything of trifling dilttante, has been definitely discarded from the sculpture department and stone cutting adopted in its stead. The pointing machine, never a tool for an artist of creative impulses, has vanished and the student is faced with a block of solid stone from which he is to condition a clarified design. (As stone cutting is understood, the Brownsville sandstone, a tawny, faintly streaked stone now in use in the department, is relatively soft when first quarried but subsequently hardens upon exposure to the air.)

The student understands at the outset of his effort that he cannot do anything but a rather stark, simple design owing to the nature of his material. Structure and design are understood as inseparable. Clay, with its almost fluid plasticity, can be built up into an elaborate and weak mass of refinements. With the Brownsville stone as a medium a definite concept must be in the mind of the student from the very first, for the external shape of the stone block will be the index of the finished design. The essence of the created design will be a definite relation to its basic outer form—the original block.

The attitude of the sculpture department is not entirely at variance with the early Egyptian sculptors. They aim for a monolithic character, and they avoid surfaces troubled with realistic textures. Such design elements as hair, draperies and certain ornamentation of dress are treated only as changes of density which are integral parts of the architectural whole.

OLIVER BARRETT.

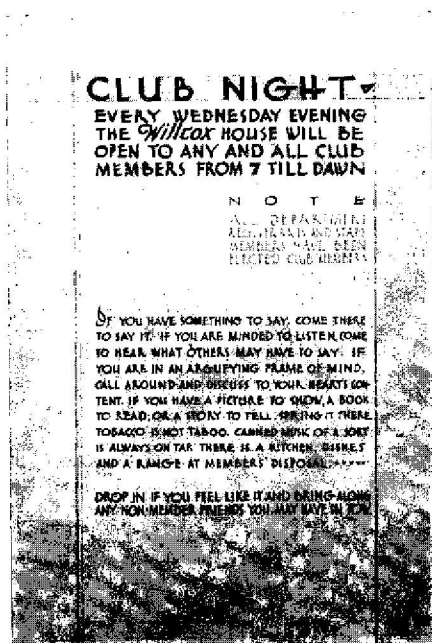
—:—

### Interior Design

The interior design department is organized with its relationships to architectural design in view. The work is so planned that the student has two years of architectural training at the beginning of the course, which gives him an excellent background for his chosen profession. The last three years are devoted to specialized problems related to interior design.

The purpose of this department is to impart a thorough understanding of the

profession and its relationships to architectural design, landscape architecture, painting, sculpture, crafts and the art of living. The student is encouraged to make experiments in the related arts to help him find certain truths which can only come through actual exper-



A STANDING INVITATION

ience, and which result in a broadening influence upon his own profession and a keen appreciation of the other arts.

Down in the class rooms surrounding the charming art court interior design students model in clay, using color in a decorative painting, or glazing a lovely bowl. Others are in the drafting room with the architectural designers planning a mighty cathedral or with the landscape architects discussing an intimate garden.

So they come to know these other personalities, their aims, problems and dreams. Through these associations, the field of interior design is enlarged and colored.

The work in the interior design department is divided between class room projects, lectures upon related subjects and field trips to department stores and private homes. At times the student is also given an opportunity to plan and carry out some actual problem pertaining to interior design.

Graduates find places as assistants to decorators or consulting decorators with architectural firms. Often they begin their professional experience as salesmen in the drapery department of some city department store.

A recent graduate from the department, Edward Burke, '33, has had a year's art study in Sweden and is now

in Arizona building his first house in the modern style. He plans to do consulting decorating. Another graduate, Frances Humphrey, '32, who made splendid progress in painting with Archipencho at Mills last year, has been exhibiting her water colors in Mexico, California and the Portland Art museum. One of last year's graduates, John Spittle, has a promising position at Gump's in San Francisco.

BROWNELL FRASIER.

—:—

### Normal Art

The budding poplars, warm sunshine and spring costumes bring to life the spirits of the students concentrating around the art court these spring days, as outdoor sketching relieves the winter studio atmosphere. The painters are rendering the cerulean blue and subtle yellow-green on the slopes of distant Baldy with foregrounds of fluttering weeping willows framed by the ancient Condon oaks.

PWA workers digging underground passages for the heating system in faded blue overalls with shovels, dumping trucks and cement mixers serve as models for the freshmen struggling with the human figure in action.

Yellow-jackets, bees and hot beeswax stimulate the workers of Batik while odors of burning glue, dye and gasoline creep up the stairs accompanied by the rappings of the wood block printers.

The walls and halls about the court take on more color as frescoes are added by ambitious students. The present exhibition of modern textiles, designed by leading artists of France, Germany, England, Austria and America is of interest to students and townswomen.

There is promise of positions for the graduate as the depression begins to depart from our midst. Art experience, via the scheme of social betterment, takes its normal place as a balance wheel between the intellectual and emotional life of the individual and this need is being expressed in the modern educational world.

An added emphasis on the creative ability of the student is placed by the normal art department and methods courses are related to the teaching problem. The major, the group, the University requirements, and the educational norms with two minor norms to complete have been retained. Anyway, our graduates have a liberal academic education, as well as an all around experience within all the allied art groups.

Many changes happen in the lives of the graduates. Some arrive in Europe to study, others remain in the teaching field in Oregon, Washington and California, while others just will get mar-

ried. Keep us informed of the interesting new adventures happening to you and your work.

MAUDE KERNS.

— :: —

### Landscape Architecture

Landscape architecture is a relatively new addition to the professional course offerings of the University. Within recent years the scope of this profession has broadened from what was known as landscape gardening to land planning for every use. It is as closely related to architecture and to engineering as it is to horticulture.

The ability of the landscape architect to design land areas so that they will serve best functionally as well as artistically, has placed him in the position of co-ordinator on all large land planning work. Parks, parkways, waterfront developments, civic center and street design are a part of the city planning phases of the landscape architect's work. The design of golf courses, airports, campuses and institutional grounds, cemeteries and real estate subdivisions also call for the co-ordination of the abilities of the architect, gardener and engineer, with the landscape architect in the position of general designer and co-ordinator of the work of the various professions involved.

By training, therefore, the landscape architect must have a broad and thorough background in the four related fields of art, architecture, horticulture and engineering to the extent that they are applied to problems involving land planning. He must have the ability to design for utility and for beauty.

In normal times the work of the landscape architect is largely confined to the design of country estates, realty developments and also to park design and general city planning practice. During the depression there has been an extraordinary demand for landscape architects in parks and recreation area design, and the supervision of the construction of such work in the national and state parks and in the national forests.

Landscape architecture is one profession which is not overcrowded, at least not up to the present time. Graduates have not only been successful in professional employment, but because of the tremendous impetus that park, recreational and civic improvement work has been given by the government recently, it is impossible to satisfy one-tenth of the demand for graduates of this department.

The department of landscape architecture is not interested, however, in turning quantities of graduates into a field which in normal times will only

absorb a limited number each year. It is interested in maintaining the highest standards of cultural and technical education in order that its graduates will be employable and will be a credit both to school and to profession.

F. A. CUTHBERT.

— :: —

### Artist Adventurer

A wanderer into distant art fields is Edgar Bohlman, graduate with the class of '26. His conquests as a painter and designer have taken him to New York, Paris, Morocco, and among North African tribes. His work has been hailed for an "incomparable youthful freshness and charm," and has been declared the possessor of permanence.

The theatrical world of New York accepted him soon after graduation, and he designed for Norman Bel Geddes and for Don Marquis in the Theater Art Guild. Out of five operas produced in English in one Broadway season, he staged and costumed one and designed scenery for two more. Robert Edmund Jones and Bel Geddes handled the other two.

His staging and costuming for an opera by Bach, first given in New York, was acclaimed by critics as "a most exquisite and rare production." His ability won him an invitation to a conference with Max Reinhardt in Germany. One of his designs was accepted for a Metropolitan Opera production.

After several summers abroad he became an artist for a scientific expedition into Northern Africa in 1932. He painted the people, costumes and landscapes of remote districts, and exhibit-

ed his work in the Modern gallery of Casablanca, in Morocco in 1933.

Last year his paintings and costume designs were shown at "Solon des Tuileries," "Museum de Tracadero," at the Sahara exposition, and at "Galeria Mona Lisa," all in Paris, as a one-artist show. His costume plates of African tribes have been published by the director of the library and archives of the protectorate in France and the plates have been acquired by French museums as well as having been reproduced in a number of magazines.

Bohlman's work is recognized for exactness of color and line and delicacy of sentiment and grace of life. One French critic has declared: "I do not hesitate to prophesy that Edgar Bohlman will leave a name."

The Oregon graduate expects to return to New York this year, where he will exhibit his work. A number of his watercolors were displayed at the alumni exhibit in Portland during April. One of these paintings, "Elatoge," was sold to Mrs. May Gilliland Gay, '33, a former art teacher of Mr. Bohlman's at Jefferson high school, Portland.

— :: —

### Harada Heralded

London, Paris and Eugene have been chosen by the Japanese people as the three cities of the western world to be granted her highest ranking art scholars and teachers next year, Burt Brown Barker declared in announcing to assembled students and faculty the coming this fall of Jiro Harada, a foremost Japanese archaeologist and art scholar.

The University vice-president described the attainments of the coming guest instructor in Oriental studies, and judged Harada's decision to come to Eugene rather than to eastern centers as one of the highest tributes ever paid the University in the field of scholarship.

While depicting the social life of Japan, which he visited a few months ago, the speaker stated: "The Japanese are efficient, friendly and more hospitable than any other people, once you gain their respect. No other people has their sense of honor, or their courtesy."

— :: —

### Murals in New York

When the American Mural Painters' society exhibited in New York during April, several works were included by Lucia M. Wiley, art department graduate with the class of 1928. The exhibition was housed at the Grand Central galleries.

Work of unusual merit was found among the murals shown, and feelings of optimism regarding the prospects of American murals were expressed by critics, particularly by Edward Alden

---

## COIN OF THE REALM

(A department manifesto from the pen of W. R. B. Willcox)

The coin of this little realm, here in the department, is CONSIDERATION for one another. The more of it put into circulation, the more profitably can business be carried on.

It comes in three denominations: CONSIDERATION for everybody's TIME, PROPERTY and NERVES—your own included.

TIME: There is only so much of it. Another's loss of it by one's own thoughtless interference is total—it can never be restored—and there's your own!

#### HAVE A WILL!

PROPERTY: Nobody has too much for his own use. If one borrows, let him repay in full. As one values his own, let him value no less that of another.

#### HAVE A CARE!

NERVES: One's own noise doesn't bother him so much, but it raises hob with everybody else.

#### HAVE A HEART!

---



Jewell, New York Times writer, who commented on the Oregon graduate's work as follows: "Room must be found for mention of Lucia Wiley's altogether charming panel of 'The March of Youth'."

Since the New York exhibition, Miss Wiley has shown her work in one-person exhibits at Omaha, Nebraska, and Bennington, Vermont. She has exhibited with the University of Minnesota's spring show and the Minneapolis Woman's club spring show. Two of her pieces are being shown in Seattle, after having won first and second prizes.

Her murals in the entryway to the Little Museum on the University campus are familiar to many alumni. These were presented in partial fulfillment of work done for her master's degree, obtained at Oregon.

---

## A L U M N I

---

### MEETINGS

#### *Rose City Election*

More than 250 University alumni, attending the annual banquet of the Portland Alumni association, Thursday evening, April 11, elected Paul D. Hunt to the presidency for the coming year.

Other officers elected were George Mimnaugh, vice-president; Henryetta Lawrence, secretary, and John Yerko-vich, treasurer.

President Hunt succeeded Bert S. Gooding, who has held the office during the past two years. Since his graduation in 1930, Hunt has served on numerous committees in the interests of the University. For one year during his collegiate career, he acted as chairman of the Greater Oregon committee. He is a member of Friars, of Kappa Sigma fraternity, and has been secretary of the Multnomah chapter of Oregon Republicans for two years. He is at present associated with the Pagef Mortgage company in Portland.

John Veatch, '03, served as banquet toastmaster. Prink Callison and William Reinhart spoke on University athletics, and Colonel William Hayward as guest of honor was presented with a plaque from the organization as an expression of gratitude for his 30 years of service on the campus.

#### *Washington Dinner*

When alumni dined in Washington recently there were present one alumni president, one member of the state board of higher education, one senator, two congressmen, one former congressman, four ex-student body presidents, three ex-professors, one national vice-com-

#### **Hudson Wins Stipend**

Harlow Hudson, ex-'30, former student in the University school of architecture and allied arts and now a graduate student at the Massachusetts Institute of Technology, was awarded the Ion Lewis traveling scholarship in architecture by its managing committee in Portland April 13. Mrs. Hudson, formerly Kathryn Kjosness, is a graduate with the class of '31.

Hudson's recent work has concentrated on city planning, though a number of his sketches shown at the art alumni exhibit in Portland this month is evidence of his work in other art fields. He will probably leave for Europe early in the summer to take advantage of the traveling stipend included under terms of the scholarship.

mander, numerous doctors, colonels, majors, commanders and one ex-governor.

University alumni residing in and about Washington took advantage of the annual session of the American Alumni council and the presence in the national capital of University alumni president, Merle Chessman, to meet for dinner at the Highland's on April 3. Don C. Beelar, '28, was in charge of arrangements and acted as toastmaster.

Oldest alumni present was Thomas M. Roberts of the class of '93. Fifty-two persons were present. Among the speakers were Senator Frederick Steiwer; Congressmen James Mott and Walter Pierce; Mrs. Walter Pierce; Justin Miller, dean of law at Duke university and now assistant to the attorney general, formerly dean of law at the University of Oregon; President Harry Rogers, Brooklyn Institute of

Technology, former dean of engineering at Oregon State college; Harold Warner, national vice-commander of the American Legion, and President Chessman.

Plans are already underway for a repetition of the event next year, with Don Beelar appointed as acting chairman, and Helen Beelar secretary.

— :: —

#### **Fifty-Two Attend**

Among those attending the dinner were the following:

Merle Chessman, '09, Hon. Frederick Steiwer, '06, Mrs. Frederick Steiwer, Hon. James W. Mott, ex-'07, Hon. and Mrs. Walter Pierce, MacLeod Maurice, ex-'19, Mrs. MacLeod Maurice (Helen Bracht, '18), Paul Biggs, ex-'33, Col. C. C. McCornack, '01, Mrs. C. C. McCornack (Nina Wilkins, ex-'05), Mr. and Mrs. Luther Ellis (Dorothy Groman, '16), Dr. F. C. Wooton, '26, Mrs. F. C. Wooton, Edward D. McAlister, '24, Mrs. Edward D. McAlister (Bertha A. Hays, '22), Major William O. H. Prosser, '08, Mr. and Mrs. R. H. Stalder (Georgia Stone, ex-'28), Jack Miller, Hon. Franklin Korell, L.L.B. '10, Mrs. Franklin Korell, Miss Elizabeth Babcock, ex-'29, Mr. and Mrs. Norborne Robinson (Alice Gram, ex-'18), Miss Margaret Stauff, '34, Charles "Cap" Roberts, '33, Captain Elmer Hall, ex-'14, Kenneth H. Hunter, '25, Carlton Savage, '21, Roy Neil Veatch, '22, George Verne Blue, '22, Col. Harry L. Dale, '06, Mr. and Mrs. Justin Miller, John Rae, former faculty member, Mrs. Dorah A. May, '30, Kenton Hamaker, '32, Mrs. Kenton Hamaker, Mrs. Frieda Goldsmith Gassin, '12, Commander and Mrs. L. A. Odlin (Dorothy Wheeler, '17), Mr. and Mrs. Robert E. Smith (Sibyl Kuykendall, '03), President and Mrs. Harry S. Rogers, Harold J. Warner, '13, Mr. and Mrs. Robert Myers (Dorothy Smith), Donald C. Beelar, '28, Mrs. Donald C. Beelar (Helen Webster, '29).

— :: —

### COACHES

#### *Hobson, Warren Named*

Two Oregon graduates, Howard Hobson, '26, and John Warren, '28, will join the Webfoot coaching staff at the start of the athletic year in September. Hobson will become varsity basketball and baseball coach, leaving Southern Oregon Normal school to take over reins now held by William J. Reinhart, resigned after 12 years at Oregon. Warren will come from Astoria, where he coaches high school sports to take over the frosh mentorship left vacant with the advancement three years ago of Prince Callison to varsity football coach.

Announcement followed several lengthy sessions of the student executive committee held since Reinhart's resignation on March 18. The amounts of salaries were not announced.

Oregon will have one of the youngest, yet most experienced graduate coaching groups on the Pacific coast, with the arrival of her latest additions. The Webfoot staff will include six full-time coaches, only one of whom is not an Oregon alumnus. The lone exception is Colonel Bill Hayward, famed track coach and trainer who is starting his thirty-third year. Prink Callison, Gene Shields and John Kitzmiller, as well as Reinhart, are all ex-Webfoot stars.

#### **Records Brilliant**

Hobson, though but one of 40 aspirants to Reinhart's vacant berth, had

---

#### "HOW SMART IS A COLLEGE GRADUATE?"

A few days after you receive this magazine, there will be mailed to you a new kind of questionnaire for graduates. During the past 7 years, thirteen editions of this questionnaire have been issued to the graduates of the 44 leading colleges and universities.

We are anxious for University of Oregon graduates to make a good showing on the return card which will be mailed to The Graduate Group, our national advertising representatives in New York.

Every University of Oregon alumnus who fills out and mails back this card will be rendering a distinctive service of value to the University of Oregon Alumni Association.

---



been generally regarded as the most likely prospect. His unusual coaching record began after a brilliant three-sport career as a Webfoot athlete. Appointed as athletic director at Southern Oregon Normal three years ago, he ran up a phenomenal winning record, including only 15 defeats in a three-year schedule of 83 contests. For the past two



**NEW VARSITY COACH**

Howard Hobson, '26, who will take over basketball and baseball destinies on the campus, succeeding William J. Reinhart who has resigned in favor of an eastern mentorship. Hobson marked up a sensational coaching record during his three years at Southern Oregon Normal.

years his hoop squads have won series from Oregon, three games out of four. This year his team made an unexpected showing at the national A.A.U. tournament at Denver.

His preliminary high school coaching record included highly successful terms at Kelso high school in Washington, and at Benson Polytechnic in Portland. His record at the three schools includes 139 victories out of 176 starts. He holds a master's degree from Columbia university, and for six years played professional baseball.

Warren's record as coach of the Astoria Fishermen has been equally notable. Following graduation in 1928 he went to the river city and has since turned out four state basketball championship teams, the last of them this winter. Widely known as "Honest John," he has guided his teams through 276 contests, and in seven years has lost only 28 of them. He played football for four years on Oregon squads.

His duties on the campus will include coaching of yearling teams in football, basketball and baseball. For the past three years these tasks have been hand-

led by varsity coaches out of their regular seasons and by volunteer and student coaches.

— :: —

**Society Editor Speaks**

Gwladys Bowen, ex-'22, society editor of the Morning Oregonian, Portland, was the honored speaker at the annual Matrix Table banquet held in Eugene by Theta Sigma Phi, women's national honorary journalism group, April 25. More than 150 feminine leaders of Oregon were in attendance.

Miss Bowen is recognized as an accomplished writer, and has traveled extensively in Europe. She has been active in drama, both as actress and director. While a student on the Oregon campus, she was a charter member of Pot and Quill, and was winner of the Edison Marshall short story contest.

— :: —

**Young Demos Elect**

Among officers named by the Young Democratic clubs of Oregon for the next year are several University alumni. Selection of the group's leaders was made during a state convention held in Portland April 12 and 13.

Ray Martin, '31, of Eugene, was named treasurer; Karl Huston, J.D. '34, of Corvallis, legal adviser; Ruth Gaunt, ex-'32, of Portland, publicity assistant.

A special constitutional interim committee includes Stanford Brooks, ex-'31, of Astoria, chairman; Virgil Langtry, LL.B. '34, of Tillamook; Roscoe Krier, ex-'33, of The Dalles, and Gladys Everett, LL.B. '23, of Portland.

On the Young Democrat advisory board will serve these alumni: Alfred E. Reames, ex-'92, of Medford; Milton Miller, ex-'88, of Portland; R. R. Turner, ex-'26, of Dallas; Earl Nott, '10, of McMinnville; Dr. Jacob F. Hosch, M.D. '05, of Bend; Henry Hess, LL.B., '34, of La Grande, and Dr. Joseph F. Wood, M.D. '00, of Portland.

— :: —

**Alums Write Articles**

Two University alumni, well known on the campus in recent years, were authors of articles appearing last month in the *National Student Mirror*, publication of the National Student Federation of America.

Wallace J. Campbell, '32, wrote an article entitled, "Consumers Band to Bargain." He is now employed with the Cooperative League of America, which maintains headquarters in New York City. He obtained his master's degree from the University in 1934, and was active until then in progressive movements on the campus. A few months ago he was contributor of an article to the *Railway Clerk*, a labor magazine.

The second article in the *Mirror* was written by Elinor Henry, '34, entitled "A College Co-operative." The former *Emerald* feature editor described the University of Washington housing co-operative with which she is now connected while taking graduate work on the Seattle campus.

— :: —

**Pearson Sings "Elijah"**

Before an Easter audience so large that the aisles were crowded for the entire performance, Eugene Pearson, '32 (M.F.A. '33), sang the leading role in Mendelssohn's masterful oratorio, "Elijah." Pearson returned to the campus from Los Angeles to lead an impressive list of soloists, accompanied in the presentation by the polyphonic choir and University orchestra.

Since his years on the Oregon campus, stated J. J. Landsbury, dean of the music school, Pearson, who always possessed a fine quality of voice tone, has shown great improvement while studying in California. The Easter appearance was his second as the leading soloist in a campus oratorio.

— :: —

¶ Twenty-six short stories entered in the eighteenth annual Edison Marshall contest were led by "Last Day," written by Ruth McClain, senior in journalism, who was recently declared winner of the \$50 prize. One of the University's foremost alumni, Edison Marshall, class of '17, is donor of the award offered each year.



**"HONEST JOHN" WARREN '28**

who will handle all freshman athletics at the University, following a highly successful career as coach of the Astoria high school Fishermen since his graduation from Oregon in 1928. The campus position has been vacant since the advancement of Prink Callison to varsity football coach three years ago.

## S P O R T S

## BASEBALL

**Opening Day Victory**

With Don McFadden hurling two-hit ball and a total of 17 hits ringing from Webfoot bats, Oregon's defending baseball champions of the coast conference's northern division opened their 1935 campaign with a crushing victory over Oregon State, 17 to 0.

The tilt, held on April 26, climaxed a colorful series of events celebrating the University's "Baseball Day" and officially dedicating Oregon's new \$10,000 baseball diamond south of McArthur court. The baseball schedule was opened when President "CV" Boyer

sey collected at least one hit, and two Beaver pitchers went to the showers.

Oregon opened with one run in the first inning, and scored five times in the second on four hits, a pair of walks and two errors. Six more runs followed in

the next four innings, and five in an uproarious seventh.

**Beavers Bite Back**

Four Oregon pitchers failed to stem the tide of vengeance loosed by the Oregon State Beavers the day following, and the series stands at one game each as a result of a 12 to 7 score. The tilt, held in Corvallis, gave the Beaver bats-

## CONFERENCE GAMES

## BASEBALL

Oregon.....	17	O. S. C.....	0
Oregon.....	7	O. S. C.....	12
Oregon.....	5	Idaho.....	4
Oregon.....	5	Idaho.....	6
Oregon.....	7	W. S. C.....	0
Oregon.....	7	W. S. C.....	8

## TRACK

Oregon.....	5	O. S. C.....	3
(Relay Meet)			
Oregon.....	65 2/5	W. S. C.....	65 3/5

## GOLF

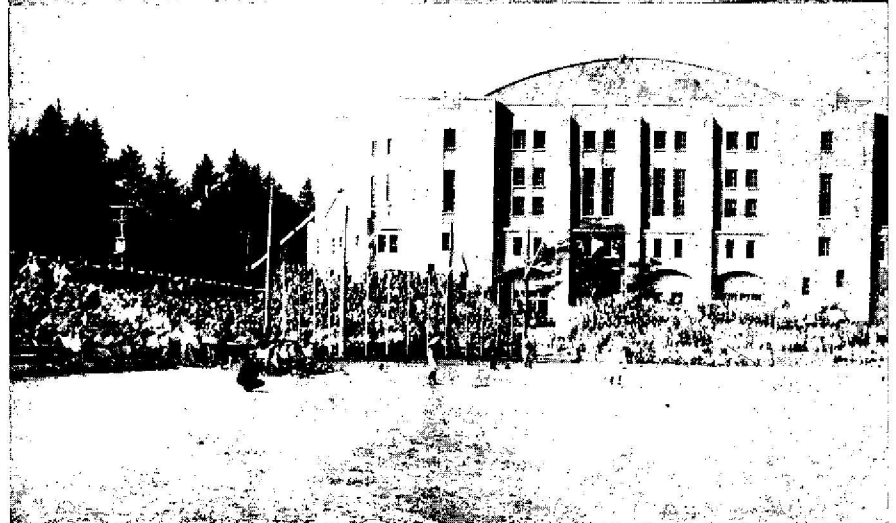
Oregon.....	12½	Wash.....	14½
Oregon.....	7½	O. S. C.....	19½
Oregon.....	14½	O. S. C.....	12½

"went down swinging" before a low fast ball delivered by Chancellor "Bill" Kerr to Catcher - and - Mayor Elisha Large of Eugene. The day's festivities began with a down-town parade and field ceremonies. The new diamond was not christened.

Superlatives were the order of the day. The greatest crowd assembled on a Eugene diamond, numbering more than 3000 persons, turned out to cheer a team considered by throngs of fans to be the greatest in Duck history.

Ray Koch, speedy second-baseman, led the hitting barrage with four hits and four runs, two of the hits doubles and one a home run, in four trips to the plate. He cleaned the sacks in the sixth with a long home-run into deep right center. His teammate at short-stop, Joe Gordon, followed with two out of three, and contributed the handling and eight flawless chances in the field.

McFadden's mound work resulted in his fourth win in four starts. Only one Orangeman reached third base during the nine innings. All Webfoots but Kel-



## SCENES OF OREGON'S SUCCESSFUL "BASEBALL OPENER"

"Baseball Day" was a gala event this year, featuring the start of the Webfoot's drive for another championship, dedication of the new baseball diamond and Reinhart's last season as varsity coach. Above, Chancellor Kerr (left) who pitched the first ball to Dr. Boyer (right) to open the game. Upper right: the Oregon band and a portion of the R.O.T.C. unit parading the streets of Eugene on their way to the opening ceremony. Center, right: varsity men caught in action as they proceeded to beat O.S.C. 17 to 0.

Below: the crowd that attended and a portion of the new field.

men the opportunity for showing their prowess at heavy hitting, a feature of their pre-season games.

Bob Bergstrom, Orange third baseman, lifted a four-base clout in the third with the bases loaded, after the Ducks had taken a first inning lead of three runs. Maurie Van Vliet, Duck center fielder, and John Lewis, third baseman, led the Oregon nitters, with two in five trips to the plate.

In six pre-season games, the Duck nine broke even with each opponent. Two games each were played with Willamette, Linfield and Portland university. The final contest against Willamette, played on April 19, was the feature of Salem's celebration honoring Coach Bill Reinhart, who is a native of that city and who will leave this summer to take over coaching duties in the east. Oregon won on Ray Koch's single in the tenth which brought Clausen home, breaking a 5 to 5 deadlock.



**Trackmen Take Relays**

Track prospects for the Webfoot cindermen were indicated for the first time this season when Colonel Bill Hayward took his squad to Corvallis Saturday afternoon, April 27, and came back with a five to three victory in the seventh annual dual relay meet against Oregon State. Oregon won the two-mile, 880-yard, shuttle hurdle, sprint medley and distance medley, while the Beavers took the 440, four-mile and mile.

Although for the third successive year no present marks were broken, the Webfoots showed sufficient all-around strength to merit consideration as a contender in this year's northwest meets. Hayward has four champions and co-champions to enter in the field events, as well as recognized performers in the running events, when the Webfoots meet other northwest teams, the first on the schedule being Washington State on May 4.

Conference titlists among the Webfoot stars are Bob Parke, national record holder in the javelin throw; Arne Lindgren, broad jumper; Bob Voegtly, pole vaulter, and Fred Nowland, high jumper. Parke's position has been threatened by Warren Demaris, ace of the northwest tossers in 1933. Both are tossing the spear around 200 feet in practice.

Fast times have been turned in by practicing varsity runners. Sam McGaughey, sophomore distance star, has upset Captain Bobby Wagner, northern division two-mile champion, in the varsity mile. George Scharpf, letterman half-miler, has made 1:58.7 in practice 880-yard runs.

Sprint teams will probably include Bob Shoemake, Kenneth Miller, Wal-

Patterson. Leading distance men are Bob Wagner, for two years two-mile ter Hopson and either Bob Parke or



**SECOND BASEMAN**

Ray Koch, who should repeat his record of proficiency as a part of last season's air-tight infield on the Webfoot varsity by holding down his old position on the keystone sack.

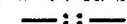
champion in the northwest; Will Pad-dock, Sam McGaughey, Alfred Johnson, Clayton Wentz and Bob Ludington.



**Netmen Lose Opener**

Oregon's varsity tennis squad, handicapped by unsettled practice conditions but numbering six lettermen, moved into its conference schedule with two wins and one tie in early contests. The opener, against Washington May 4, went to the Huskies by a score of six matches to one. The Huskies had defeated Oregon State by the same score the previous day.

Coach Paul Washke's racket-wielders took six matches and dropped only one against Linfield. Against Portland university the Webfoots won four matches to three in the first contest held on the campus courts. A second encounter ended in a deadlock on Portland cement, when rain interrupted



**Golfers Win, Lose**

An unseasoned squad of three sophomores and three one-year men has upheld the Webfoot colors on the golf links against three collegiate competitors thus far this year, winning once and losing twice.

Tom Stoddard's divotmen lost a close match on April 13 to Washington's team of veterans, 14½ to 12½. Three days later the Ducks came back under the leadership of a sophomore, Sid Milligan, to beat Linfield decisively, 15 to 2. Oregon State, however, took the following Saturday as the occasion for throwing the University golfers off-stance with a clear-cut win of 19½ to 7½, garnered on a Corvallis course.

However, the return match at Eugene was taken by the Webfoots, 14½ to 12½.

---

**C A M P U S**

---

**Summer Session**

Summer session at the University of Oregon will open June 24 in Eugene and Portland and close August 25. A post session of six weeks will be held on the Eugene campus from August 5 to 30, it has been announced by Dan E. Clark, assistant director of extension.

With an expected enrollment increase over last year's total of 1273, the summer session will include work in nearly every scholastic field, in both lower division and graduate studies with special attention being given to group requirement courses.

The list of visiting professors includes

Bernard Hinshaw, art department head at Illinois Wesleyan; Dr. W. C. Reusser, professor of education at the University of Wyoming; Dr. Ernest Sutherland Bates, writer and critic from New York City; Walter C. Barnes, professor of history at Smith College; and Dr. Merle Hugh Elliott, instructor in psychology at Harvard.



The Carnegie art center will be repeated in Eugene, with the addition of sculpture to the curriculum. Dr. Eugene G. Steinhof, distinguished European art expert, will return for the session. Library courses and the clinical

school in education will again be featured.

Catalogues are being sent from the office of Alfred Powers, director of summer sessions, 814 Oregon building, Portland.

— :: —

### A.S.U.O. Helmsmen Named

From spring term's annual political haze has emerged the crew of officers who will guide University student body destinies in 1935-36. As a result of campus elections and appointive sessions of the executive council during the later weeks of April, administrative heads and the editors and managers of publications have been named.

James Blais of Eugene won over Edmond Labbe of Portland for A.S.U.O. president by the scant margin of 40 votes. Other officers elected were: Roland Rourke, also of Eugene, over Arne Lindgren of Astoria for vice-president; Adele Sheehy over Virginia Proctor, both of Portland, for secretary; Roberta Moody of Eugene over Eleanor Norblad of Astoria for executive woman; Robert Thomas over Howard Patterson, both of Portland, for executive man, and Robert Prentice of Medford over Cecil Barker of Myrtle Point for junior finance officer.

The Daily Emerald will be edited by Robert Lucas of Portland, who was selected from a list of ten aspirants, and managed by Eldon Haberman of Grants Pass. The 1935-36 Oregana will bear the artistic stamp of Editor George Root of Portland, and will be financed by Business Manager Newton Stearns, also of Portland, who succeeds himself to the position.

— :: —

### Prep Bands Compete

Gayly garbed high school bands from Corvallis, La Grande, Burns and Beaverton were crowned champions in the four classes of competition at the close of the 12th annual state high school band contest held on the campus April 12 and 13. Twenty-four bands, numbering more than 900 musicians, participated.

The red-jacketed players from Corvallis, directed by Ervin Kleffman, were judged winners of the class A division, and were given permanent possession of the Morning Oregonian trophy and first inscription on the Seiberling-Lucas cup. Eugene and Grant high of Portland followed closely in the final rating.

Oregon City and West Linn received special mention in class B, won by La Grande. In class C, Beaverton was followed by Tillamook and University high of Eugene, all of them rated excellent. Burns, which came the farthest distance, in winning class D, a

new division for bands of not more than 25 members, was named over Santa Clara.

In a colorful marching contest through the Eugene business section, featuring more than a dozen bands, Eugene's black and white clad performers were awarded the Eugene American Legion trophy.

— :: —

### Peace Parade

With colorful banners, emblazoned slogans and enthusiastic speeches more than 1,000 University, Northwest Christian College and high school students gathered on the campus Friday morning, April 12, to articulate their demand for a repudiation of the "war method."

Well organized and tinged with an atmosphere of good humor that was lacking on numerous other campuses of the country on which peace gatherings were held, the demonstration followed six speeches with a street parade.

The protest "against the method of war" was given the sanction of the faculty without a dissenting vote two days previously.

— :: —

### Junior Week-end

Junior Week-end, the most memorable social event of the college year, will retain all of its traditional atmosphere when it takes place on May 10, 11 and 12. Main attractions will again include the Mother's Day program, the Canoe Fete, Junior Prom, and Campus Day events.

Mothers of the University of Oregon will not only have their own schedule but will be honored guests at student functions. The program for Mothers will open with a tea on Friday afternoon, will reach a climax Saturday evening at a banquet in the John Straub memorial building, and will close with

dinners at all living organizations on Sunday.

Gay lights and dream-like floats, embodying the theme of a "Melody in Spring" will transform the quiet current of the mill race into a medley of color and song on Saturday evening during the annual Canoe Fete. Floats entered by living organizations will depict popular song numbers, including "The Good Ship Lollypop," "Three Little Pigs," "Chinatown," "A Picture Playhouse in My Heart," and others.

— :: —

### Grade List Soars

Largest in campus scholarship annals of recent years the winter term honor roll boasted a list of 121 students, 14 of them earning perfect, or all "A," grades. To gain the distinction of being on the honor roll a student must make a grade point average of 2.50 based on 12 or more term hours. The highest grade obtainable, "A," counts three points, "B" counts two, and "C" one. The lowest passing grade, "D," does not count.

Perfect grade records were earned by Jack W. Huggins, Marie L. Saccomanno, Leland J. Thielemann, Polly P. Thompson, all of Portland; Frances G. Brockman, Margaret M. Cass, L. M. Faust, L. G. Humphreys, Sister Miriam C. Murphy, Eugene; Helen G. Abel, Astoria; Jean M. Aikin, Ontario; Mary L. Nelson, Junction City; Mary Kessi, Harlan; Floy Young, Ashland.

\* \* \*

Alpha hall, high ranking men's dormitory unit for the past several terms, continued highest in grade standings for winter term, with a point average of 1.792. Alpha Xi Delta, national sorority, scored 1,755 for second place, while Sigma hall, another men's group, and Pi Beta Phi, national sorority, followed with 1.663 and 1.635. Delta Upsilon lead the fraternities.



THE 1935 VARSITY BUSY AT SPRING PRACTICE



## ART LEAGUE DIRECTORY

Editor's Note: The following four pages contain the names and addresses and wherever possible the present occupation of most of the graduates of the School of Architecture and Allied Arts. The Art League and the Alumni Office would appreciate additions or corrections to the information contained herein.

CATHERINE ADAMS (Mrs. Orville Lindstrom), 441 E. 13th, Eugene, Oregon, (General Art, 1933). Working in the registrar's office at the University.

MARIAN E. ADY, 316 Hargadine St., Ashland, Oregon, (Normal Art, 1921). Head of the art department at Southern Oregon Normal School. 1933 Carnegie scholarship.

VELNA J. ALEXANDER, 378 Bellevue St., Salem, Oregon, (Normal Art, 1932). Pottery and batik exhibited at Oregon State Fair. Attended the extension course in painting at Eugene.

MARIE L. ALLEN (Mrs. Louis C. Rosenberg), "Lomaro," Greenfield Hill, Fairfield, Conn. (Arch. Design, 1917). Chiefly occupied in keeping her etcher husband's home in order. Accompanies him on his frequent visits to Europe. Has collaborated with him on his several architectural monographs. Plays gracefully the role of mistress to the charming estate of "Lomaro," their country place near Fairfield, Connecticut.

EDWIN A. ANDREN, 1430 Locust Street, Medford, Oregon, (Arch. Des., 1932). Car loading for the Owen Oregon Lumber Co.

CATHERINE A. ANDERSON (Mrs. Zene Spreadborough), 2006 N. Emerson St., Portland, Oregon, (Draw. & Paint., 1923). Commercial artist with Peterson-Schon Engraving Co.

LOWELL F. ANDERSON, 2748 N. E. 9th Ave., Portland, Oregon, (Arch. Des., 1934). U.A. Exhibition, exhibition committee. Was Miss Avakian's assistant, working in ceramics.

WINNIFRED E. ANDERSON, La Center, Washington, (Normal Art, 1934). Teaching in high school at La Center, Washington.

GRACE I. ASH (Mrs. Charles H. Davis), Court House, Boise, Idaho, (Normal Art, 1928). M.F.A. 1930. Keeping house. Was assistant to Miss Kerns.

KATHERINE ASHMEAD (Mrs. Ralph H. Kock), 4246 Center Ave., Inglewood, California, (Arch. Des., 1925). Worked for various architects in southern California. Small house designing for 2 years in Carmel-by-the-Sea.

VICTORIA AVAKIAN, Scff. of A. & A.A., Eugene, Oregon, (General Art, 1927). Teaching crafts and ceramics in the school. Studied in California School of Design.

EDITH M. BAIN, North Shore Blvd., Oswego, Oregon, (Normal Art, 1928).

DAVID C. BAIRD, Rt. 2, Eugene, Oregon, (Arch. Des., 1926). After working as a draftsman with several western architectural firms, he worked with the noted firm of John Gamble Rogers in N. Y., assisting Otto Eggers, the well-known delineator and designer on many projects. Has traveled extensively in Europe and is now at work in Eugene.

MARIAN BARNES (Mrs. John C. Skottowe), 1501 N. 5th St., Tacoma, Washington, (Draw. & Paint., 1929). Housewife.

LYLE P. BARTHOLOMEW, 1455 Saginaw St., Salem, Oregon, (Arch. Des., 1922). Practicing architecture in Salem. Member of Oregon Building Congress.

PAULETTE BEALL, Eugene, Oregon. Studied last two years under Hans Hoffman in Munich. Now painting in Eugene. U.A.A.L.

WILHELMINA A. BECKSTED (Mrs. Paul R. Morrison), 1730 N. W. Couch St., Portland, Oregon, (General Art, 1923). Worked for 3 years with Povey Bros. in stained glass, diced glass composition, forming translucent mosaic for illuminating effects. Free lancing for three years, drawings for engravers.

ALLAN BEDFORD, 701 Architects Bldg., Los Angeles, California, c/o Roland Choate.

MANSON BENNETT, Box 384, Beaverton, Oregon, (Arch. Des., 1933). Working in office of Harold P. Doty, architect, in Portland.

JOHN BALLATOR, 1966 S. W. 4th Ave., Portland, Oregon, (Paint. & Sculp. ex-'32). Graduated Yale School of Fine Arts, 1934. Murals in New Haven. Just finished murals at Franklin High School in Portland. Leaving for New York soon. U.A.A.L. exhibition.

JUANITA BABBITT, 1625 S. W. Clifton Ave., Portland, Oregon, (Gen. Art, ex-'30). Designer for Mitchell Dress Manufacturing Co., Royal Bldg., Portland.

NELL BEST, Uni. of Idaho, Moscow, (Draw. & Paint., 1929), M.F.A. 1930. Teaching adult art class in Moscow, Idaho. U.A.A.L. exhibition.

RAYMOND BETHERS, 1270 Taylor St., San Francisco, California, (Draw. & Paint.), U.A.A.L. exhibition. Traveled in Europe. Magazine and advertising illustration. Sketches have appeared in "Old Oregon." Exhibited in California.

STUART BILES, Garden Home, Oregon, (Arch. Des., ex-'25). Studied at Chicago Art Institute. Commercial art in Portland. U.A.A.L. exhibition.

MUZETTA M. BLAIR (Mrs. Edgar Backus), Apt. 208, 45 Prospect Pl., New York City, (Gen. Art, 1931).

DAVID BLOOM, Centralia, Washington, (Arch. Des., 1932, B. Arch). Practicing architecture.

THORWALD M. BOCK, (Draw. & Paint., 1932).

EDGAR L. BOHLMAN, Rabat Morocco Theatre, New York City, (Draw. & Paint., 1926). Painting purchased by French government. Famed for his stage settings in New York. Exhibited in New York and Paris. At present traveling and sketching in Morocco.

KATHLEEN BLAKELY (Mrs. Marion L. Anderson), Rt. 3, Box 101, Newberg, Oregon, (General Art, ex-'29). Housewife.

HAZEL BORDERS (Mrs. Curtis C. Miller), Robinson Dept. Store, Los Angeles, California, (Normal Art, 1925). Lists her residence as 861 S. Fedora St., L. A. She has been employed as stylist in the display department of J. W. Robinson Company for the last five years.

MAXINE BRADBURY (Mrs. Ross Brown), Rt. 2, Box 243B, Klamath Falls, Oregon, Farming. U.A.A.L. exhibition. Poster designs for Klamath Falls pageant.

JAMES BRADWAY, Jasper, Oregon, (Arch. Des., 1923). Working in post office department.

RUTH M. BRAUTI, Salem High School, Salem, Oregon, (Normal Art, 1926). Has been teaching in Salem, and has studied abroad.

MABELL BRECKON (Mrs. Ransom McArthur), Kula Sanitarium, Waiakoa, Maui, T. H., (Gen. Art, 1926). Teaching in School of Decorative Accessories in Kula Maui.

JOHN BRENEISER, Box 547, Santa Maria, California, (Draw. & Paint., 1929). Exhibited wood cuts, lithographs, oils and water colors in California, Washington, D. C., and New York. One man exhibition at Stendahls and the Biltmore in Los Angeles, and Sears Roebuck Galleries in Washington, D. C. U.A.A.L. exhibition.

AGNES J. BROOKS, c/o St. John Baptist School, Mendham, New Jersey, (Normal Art, 1923). Teaching.

EYLER BROWN, 1953 Garden St., Eugene, Oregon, (Arch. Des., 1916). Teaching since 1922 in the University. Leave of absence for 1933-34. Studied etching with C.R.B. Educational Foundation and with Jules DeBruycker, Ghent, Belgium. Now teaching in the architecture department at the University. U.A.A.L. exhibition.

L. LOUISE BUCHANAN, 694 Jerome Ave., Astoria, Oregon, (Gen. Art, 1926). Working in store in Astoria.

CECIL BUCKINGHAM, 1648 E. 24th St., Eugene, Oregon, (Str. Design, ex-'33).

MAXINE BUREN, c/o Prudence Penny Dept., Post Intelligence, Seattle, Washington, (Normal Art, 1923). Newspaper writer.

EDWARD T. BURKE, Box 1474, Phoenix, Arizona, (Int. Des., 1933 B. of Arch.). Spent a year abroad studying in Stockholm, Sweden. Now in Arizona.

CHARLES L. BURROW, 1332 N. E. Weidler St., Portland, Oregon, (Draw. & Paint., 1934).

DOROTHEA M. BUSHNELL (Mrs. Drew Perkins), 204 Florence Apts., Eugene, Oregon, (Normal Arts, 1930). Teaching in Woodrow Wilson Junior High School in art department.

WILBUR C. BUSHNELL, Box 51, Ashland, Oregon, (Arch. & Des., 1930). Commercial finishing. Photography.

OLIVE R. CALEF (Mrs. Richard Averill), c/o Pendleton High School, Pendleton, Oregon, (Normal Arts, 1931). Teaching.

CLARISSA CAMPBELL, 7100 S. W. Brier Place, Portland.

HARRIET M. CANTRALL, 853 Grand Blvd., Springfield, Illinois, (Normal Art, 1933). Art supervisor in public schools of Springfield. Ex-president of Western Arts Association, one of the vice-presidents of the Illinois Vocational Association, also of Illinois High School Association. Co-author of "Art in Daily Activities."

CLEONE CARROLL (Mrs. Julius Wadsworth), American Consulate, Shanghai, China, (Arch., 1918). Wife of American consul.

DOROTHY CASH (Mrs. Leo Munly), 232 Wildwood, Piedmont, California, (Draw. & Paint., ex-'23). Housewife.

LESTER FULLER CHAFFEE, Amenia, North Dakota, (Arch. Des., 1926). Farming.

DOROTHY FLORENCE CHAPMAN, 1209 S. W. 6 Ave., Apt. 501, Portland, Oregon, (Gen. Art, 1929). Art director and office work with Sunbeam Sign Corp.

LORENE CHRISTENSON (Mrs. Eugene Laird), Co. 1652 C.C.C., Gold Beach, Oregon, (Normal Art, 1933). Housewife. Husband physical education director at C.C.C. camp.

MRS. PETER E. CHRISTENSON, 103 Holmes Ave., Oregon City, Oregon, (Normal Art, ex-'23). Teaching art in high school at Oregon City.

WALTER E. CHURCH, 225 S. W. Collina, Portland, Oregon, (Arch. Des., 1916). Attended Boston Tech 1921. Traveled in Europe. Member of architectural firm of Whitehouse, Stanton & Church. U.A.A.L. exhibition.

CATHERINE C. CLEAVER (Mrs. Herbert H. Jasper), Brown University, Providence, Rhode Island, (Normal Art, 1926).

ELINORE M. CLEVELAND, Portland, Oregon, (Gen. Art, 1934). Working in china department of Meier & Frank Co., Portland, Oregon.

GRETTA COCKING, Kimberly, Idaho, (Normal Art, 1933 M.F.A.). Teaching in high school. U.A.A.L. exhibition.

GRACE E. COEY (Mrs. Mervyn E. Hardingham), 1843 N. Schofield St., Portland, Oregon, (Interior Des., 1930). Housewife. Was an interior decorator for Lipman Wolfe and Co., Portland.

CONSTANCE COLE, 1903 S. W. Jackson St., Portland, Oregon, Studio in Worcester Bldg. Designing and illustrating. Working part time in Bergman Clinical Laboratory as technician, U.A. A.L. exhibition.

CARLETON U. COLLINS, 929 Glenn Ave., Portland, Oregon, (Arch. Des., ex-'31).

VERA L. COLLINGS, 1904 Washington St., Vancouver, Washington, (Normal Art, 1929).

MARVIN CONE, C.C.C., Rainier, Washington, (Arch. Des., 1929). Worked for Meier & Frank Co. in Portland. Officer in C.C.C.

ROSA MADELINE COSTANTINO, 425 Fernanda Court, Glendale, California, (Sculpture, 1931). Commercial art, and window displays in California.

HELEN CONNELL (Mrs. Kenneth Patterson), 975 22nd Ave. E., Eugene, Oregon, (Arch. Des., ex-'30). Housewife.

JAMES W. COOMBS, Oregon Inst. of Technology, Portland, Oregon, (Struc. Des., 1929). Teaching mathematics, structural design and drafting.

JACK CREAGER, 2104 N. E. 25th, Portland, Oregon, (Arch. Des., ex-'30). Working for Pacific Telephone and Telegraph Co. in Portland, Oregon.

HOPE CROUCH (Mrs. Raymond Nash), 110 Morningside Dr., New York City, (Draw. & Paint., 1928).

DOROTHY CUNNINGHAM, 2727 N. W. Westover Rd., Portland, Oregon, (Gen. Art, 1934). Working with her father in office of Bar and Cunningham, Civil Engineers.

ELIZABETH DARLING, 1090 Nicola St., Vancouver, Washington, (Norm. Art, 1932).

WILBERT L. DAVIES, c/o Hammond Sadler, Los Angeles, California, (Arch. & Des., ex-'32). Working for landscape architect, Hammond Sadler, in Los Angeles.

BETTY DAY (Mrs. Kermit W. Campbell), Walla Walla, Washington, (Int. Des., 1934).

DOROTHY DERLETH, 2834 Webster St., Berkeley, California, (Draw. and Paint., ex-'32).

JUANITA LEONE DIETZE (Mrs. Floyd A. Van Atta), Northwestern University, Evanston, Illinois, (Draw. and Paint., 1928).

FRANK DORMAN, 131 Ave. B. New York City, (Arch. & Des., 1924). Assistant Management Secretary, New York City Housing Authority. Several years of architectural drafting and designing. Nine months with the Encyclopedia Britannica Art department.

MARY ELLEN DRISCOLL, 1931 N. E. Weidler St., Portland, Oregon, (Normal Art, 1929). Teaching art at Franklin high school, Portland, Oregon.

GEO. MURLIN DRURY, 528 Lincoln Rd., Miami Beach, Florida, (Arch. Des., 1930). Architectural practice with Arnold and Schuyler Southwell.

DOROTHY DUPUIS (Mrs. F. Lyle Wynd), Dept. of Botany, Washington University, St. Louis, Missouri, (Gen. Art. ex-'32). Housewife.

HOWARD D. EBERHART, Corvallis, Oregon, (Struc. Des., 1929). Instructor in P. E. Dept., O.S.C.

ALFRED C. EDWARDS, 3633 Bayside, Mission Beach, California, (Arch. Des., 1933).

WILLARD A. ELKINS, Monmouth, Oregon, (Draw. & Paint., 1930). Preacher in First Christian Church.

LORAN J. ELLIS, 333 East 41 St., New York City. Practicing architecture.

DOROTHY BELLE ENDICOTT, Apt. B, 1630 Jones St., San Francisco, California, (Draw. & Paint., 1930).

HELEN ELIZABETH ERNST (Mrs. Donald Nelson), 53 King St., Portland, Oregon, (Normal Art, 1927).

CECIL J. ESPY, Jr., 1735 S. E. 23rd St., Portland, Oregon, (Arch. Des., 1933). Working for government hydrographic survey of Columbia and Snake rivers.

ADALIA F. EVERTS, 2465 Albatross Ave., San Diego, California, (Gen. Art, 1930).

MARY M. FERRALI (Mrs. James P. Johnson), 1235 Alewa Drive, Honolulu, T. H., (Norm. Art, 1929).

MARIAN R. FIELD, 2200 Willamette St., Eugene, Oregon, (Draw. & Paint., 1930). Now taking her master's degree and working in the art library. Making botanical drawings.

OLIVINE FISCH (Mrs. Mark Siddall, Jr.), 70 Lexington St., Astoria, Oregon, (Draw. & Paint., 1928).

FLORAL FLANIGAN (Mrs. Donald McCormick), 332 Park St., Salinas, California, (Gen. Art, 1930).

ROBERT E. FLEMING, Box 1295, Albuquerque, New Mexico, (Arch. Des., 1930). Instructor industrial arts. Studying Spanish colonial arts and passing it on to a group of Spanish-American boys at Menaul School.

ELIOT FLETCHER, 32 Aegean Ave., Tampa, Florida, (Arch. Des. M.F.A., 1931).

LILLIAN E. FLINT, (Mrs. Frank M. Penecker), 3503 S. E. Glenwood Ave., Portland, Oregon, (Norm. Art, 1926).

LINN A. FORREST, 3623 S. E. Carlton St., Portland, Oregon, (Arch. Des., ex-'27). After leaving U. of O. he completed his training at Massachusetts Institute of Technology where he worked under Jacques Carlu. Shortly after his return to Portland, where he was employed as a draftsman by Whitehouse Stanton and Church, architects, he was awarded the Ion Lewis Traveling Fellowship in Architecture and after a year in Europe he exhibited his work at the Art Museum in Portland. He has since been working as a designer and draftsman in Portland.

MILDRED FRENCH, Sutherlin, Oregon, (Int. Des., ex-'30).

DAVID FOULKES, 2405 S. W. 5th Ave., Portland, Oregon, (Arch. Des. B. Arch., 1929). Worked as draftsman with Fred Hiron in New York City. Has just passed his architectural examination and is now practicing in Portland.

HORACE FOULKES, 8701 Shore Road, Brooklyn, New York, (Arch. Des., 1920). Arch. draftsman with Fred Hiron, New York.

CECILE M. FRAZIER, 1315 N. E. 15th Ave., Portland, Oregon, (Norm. Art, 1934). Now teaching art in the Girls Polytechnic School in Portland.

PHEBE E. GAGE (Mrs. Sydney B. Hayslip), 2601 S. W. Corona Ave., Portland, Oregon, (Norm. Art, 1922). Another housewife keeping an architect husband in order. A charmingly decorated home bespeaks her taste and training.

RUTH M. GALLOWAY, 2nd and Hawthorne, Weiser, Idaho, (Gen. Art, 1931). Teaching art in the Vale High School.

GLEN N. GARDINER, 1925 Hill Drive, Los Angeles, California, (Arch. Des., B. of Arch., 1931). Worked for Lloyd Wright, architect, 1931-33. Now teaching architectural and mechanical drawing in Torrance High School, Torrance, California. U.A.A.L. exhibition.

S. NEAL GARDINER, School of A. & A.A., U. of O., Eugene, Oregon, (Sculp., 1934). Taking his master's degree. U.A.A.L. exhibition.

MAY GILLILAND GAY, 2656 S. W. Ravensview Dr., Portland, Oregon, (Norm. Art, 1933). Teacher at Jefferson High School.

WESLEY H. GILMORE, 2472 Onyx St., Eugene, Oregon, (Arch. Des., 1931). Now surveying and mapping with the C.C.C. company 1314, Cascadia, Oregon, and making working drawings for some of the new camp buildings.

MARY E. GOLDSMITH, 1507 N. W. 24th, Portland, Oregon, (Gen. Art, 1930). Now engaged in commercial art work in Portland.

G. ROBERT GOODALL, 1922 Moss St., Eugene, Oregon, (Landscape, 1933). Working drafting for a landscape architect in Eugene. Still going to the University.

MARGARET GOODIN (Mrs. Frederick A. Fritsch), 1601 Public Service Bldg., Portland, Oregon, (Arch. Des., 1923). Has been working as draftsman for architects in this city and in Philadelphia. Now engaged in private practice here. Recently accepted as an associate member A.A. One of first women so accepted in Oregon. U.A.A.L. exhibition.

SAVERINA M. GRAZIANO, 1924 S. E. Division St., Portland, Oregon, (Norm. Art, 1931). At present teaching art at Grant High School in Portland. Portrait painting in Oregon extension class.

EDWARD GREEN, 3275 N. E., U. S. Grant Pl., Portland, Oregon, (Arch. Des., 1933). Private practice in Portland.

JESSE WILLIAM GREEN, Mulatos, Sonora, Mexico, (Arch. Des., 1924). He received his M.A. from the Massachusetts Institute of Technology in 1925. Now in Mexico.

FRANCES L. HABERLACH, Clackamas, Oregon, (Norm. Art, 1932).

GLADYS HABERLACH, Clackamas, Oregon, (Norm. Art, 1931).

KENTON D. HAMAKER, 32½ Wilson Blvd., Clarendon, Va., (Arch. Des. B. of Arch., 1932). Successfully practicing architecture.

CLARE HAMLIN, 1340 Mill St., Eugene, Oregon, (Arch. Des., ex-'32). Working for Eugene Fruit Growers Association.

THOMAS J. HANSEN, 105 College Ave., Pullman, Washington, (Arch. Des. B. of Arch., 1930). Teaching in architecture department of Washington State College.

ROBERT HARBISON, 1773 Hilyard St., Eugene, Oregon, (Arch. Des., ex-'28). Has been making a name for himself with his sculptured animals in wood. Exhibited in Eugene and Portland.

GRACE ELIZABETH HARDINGHAM, 1843 N. Schofield St., Portland, Oregon, (Int. Des., 1930). Now an interior decorator with Lipman Wolfe and Company in Portland.

VIVIAN HARGROVE, 323 Filbert St., San Francisco, California, (Arch. Des., 1927).

WINIFRED HARVEY, R. F. D. No. 1, Box 143, Clackamas, Oregon. Doing painting and designing. Visited Europe in 1932.

CLARENCE HARTMAN, 2062 N. W. Marshall St., Portland, Oregon, (Draw. & Paint., 1929). Now playing in the orchestra at "Club Victor" in Portland.

MORGAN HARTFORD, c/o Chas. Ertz, Arch., Pittock Block, Portland, Oregon, (Arch. Des. 1932). Working in office of Chas. Ertz, architect.

CAMILLE HARRIS (Mrs. Morris Kline), c/o Boise High School, Boise, Idaho, (Arch. Des., ex-'29). Husband teaching in high school.

WALLACE HAYDEN, School of Arch. & Allied Arts, U. of O., Eugene, Oregon, (Arch. Des., 1928). Now an assistant to Professor Willcox at the school in Eugene. U.A.A.L. exhibition.

WEBB HAYES, Bigelow-Sanford Carpet Co., 1932-1st Ave., Seattle, Washington, (Arch. Des., 1933).

SYDNEY B. HAYSLIP, 2601 S. W. Corona Ave., Portland, Oregon, (Arch. Des., 1923). Architect, chiefly employed in Portland, by Lawrence Holford & Allen. Now on duty as an inspector on the Bonneville Dam.

IVAN HOUSER, Keystone, North Dakota, (Sculpture, ex-'25). Worked with Borglum on the mountain sculpture at Rushmore, North Dakota. Now established at clay and pottery work in Keystone, North Dakota.

ELIZABETH HAYTER, c/o E. L. Crawford, Lawyer, Salem, Oregon, (Norm. Art, 1928).

A. MARJORIE HAZARD (Mrs. H. B. Eubanks), Coquille, Oregon, (Draw. & Paint., 1924). A year of graduate work in the art department of Boston University. One year of designing greeting cards for an engraving company in Boston. This winter studying oil painting.

EARL W. HECKART, 435 S. Second St., Corvallis, Oregon, (Arch. Des., 1916). In contracting business.

CARL HEILBORN, 2722 Green St., San Francisco, California, (Arch. Des., ex-'29). One of our outstanding art alumni. Has had numerous illustrations in the following publications: Pencil Points, Architecture, American Architect, etc. Has had exhibitions at Gump's, San Francisco, Architectural League, N.M.C., & Bullocks Wilshire in Los Angeles.

EDWARD M. HICKS, Mass. Inst. of Tech., Boston, Mass., (Arch. Des. B. of Arch., 1934). A student at Massachusetts Institute of Technology. U.A.A.L. exhibition.

ROSCOE HEMENWAY, Bedell Building, 520 S. W. 6th Ave., Portland, Oregon, (Arch. Des., ex-'23). Engaged in private practice in architecture.

ALICE LENORE HINSHAW, 2210 Lincoln St., Eugene, Oregon, (Norm. Art, 1933). Working at McMorran & Washburne store.

DELI F. HINSON, Box 573, Oswego, Oregon, (Arch. Des., 1922).

ALBERT HILGERS, 713 N. W. 15th., Portland, Oregon. Working as a civil engineer on a government job.

DOROTHY B. HOBSON (Mrs. Louis Strickland), 49 N. 20th St., Portland, Oregon, (Norm. Art, 1928). Housewife.

WAYFE E. HOCKETT (Mrs. Roger De Busk), Enterprise, Oregon, (Normal Art, 1931). Housewife.

HERBERT HEYWOOD, 509 McKay Bldg., Portland, Oregon, (Arch. Des., ex-'18). Commercial artist. Teaches commercial art at Oregon Institute of Technology one evening a week. U.A.A.L. exhibition.

FLORENCE INGHAM (Mrs. Roy T. Norton), 3675 S. E. Glenwood, Portland, Oregon, (Draw. & Paint., 1926).

CHAS. A. IRLE, Casilla 283, Santiago, Chile, S. A., (Arch. Des., 1927).

CLARENCE H. IRWIN, 4219 Brandywine Street, N. W., Washington, D. C., (Arch. Des., 1924). Working in Bureau of Buildings for the government. U.A.A.L. exhibition.

FAITH JACOBS (Mrs. E. F. Conyngham), 3820-36th St., San Diego, California, (Draw. & Paint., ex-'26).

EDYTHE L. JACKSON, 135 S. E. 7th Ave. Portland, Oregon, (Sculp., 1934).

CLEO H. JENKINS, 527 E. 4th St., Albany, Oregon, (Arch. Des., 1921). Architectural practice.

OREN A. JENKINS, Mill Valley, California, (Arch. Des., 1919).

LETHA O. JENKS, Tangent, Oregon, (Norm. Art, 1928).

FRANCIS JACOBBERGER, 7436 S. E. 21st, Portland, Oregon, (Arch. Des., ex-'21). Practicing architecture with office in McKay Building. Active last few months on the architectural bill before the state legislature. Finds time to give the boys at the Portland University some of the fine points on football.

HALLEY P. JOHNSON, School of A.A.A., U. of O., Eugene, Oregon, (Draw. & Paint., ex-'33). Exhibited in Portland. Taking master's degree. U.A.A.L. exhibition.

HOLLIS E. JOHNSTON, 7325 S. W. Brier Pl., Portland, Oregon, (Arch. Des., ex-'21). Engaged in architectural practice in Portland and now working as head architect at Bonneville dam on the "20 permanent houses" for the government.

ELVIRA B. JENSEN, Woodburn, Oregon, (Norm. Art, 1931).

L. EDWIN JENSEN, Ohio View Drive, Rt. 1, Beaver, Pennsylvania, (Struc. Des., 1930).

LUTHER L. JENSEN, 930 Hood St., Salem, Oregon, (Arch. Des., 1930).

MABLE JOHNSON, Trinity Place Apts., Portland, Oregon, (Fine Arts, ex-'23). Commercial artist with Meier and Frank Co.

DOROTHY JONSRUD, 1931 S. W. 14th Ave., Portland, Oregon, (Draw. & Paint., 1927). For three years made lampshades for Semele Barker Studio, Portland. Now has own business designing lampshades for decorators.

MYRTLE JOYNER (Mrs. Marier), 4411 S. W. 46th St., Portland, Oregon, (Norm. Art, 1923).

ANNA KEENEY, 1501 N. La Salle, Chicago, Illinois, (Sculpture, 1928). Now attending the Chicago Art Institute.

ROBERT KEENEY, 3623 N. Farragut, Portland, Oregon, (Arch. Des., ex-'28). Employed by Big Pines Lbr. Co.

VIRGINIA KEENEY (Mrs. Walter G. Smith), 2 Beacon Hill, Boston, Massachusetts, (Arch. Des., 1927). Practicing architect in Boston. U.A.A.L. exhibition.

ROBERT KEISER, Western Ave., Wenatchee, Washington, (Arch. & Des., ex-'31).

JOSEPH KEYSER, 7911 S. E. 30th Ave., Portland, Oregon, (Arch. Des., 1934). Working for Geo. Wasie, contractor, for last three months at Bonneville, Oregon, building for the government.

ANITA KELLOGG, 3847 N. E. 22nd, Portland, Oregon, (Draw. & Paint., ex-'28). Making maps for government forest service. U.A.A.L. exhibition.

MAUDE I. KERNS. See writup.

ELEANOR F. KILHAM (Mrs. Neil Campbell), Renton, Washington, (Norm. Art, 1924).

MARY B. KIRKWOOD, Dept. of Art. and Arch., Univ. of Idaho, Moscow, Idaho, (Draw. & Paint., M.F.A., 1930). Last year spent at Royal Art School, Stockholm, Sweden. U.A.A.L. exhibition. Teaching art at University of Idaho.

EVELYN KJOSNESS, 2515 N. E. 9th., Portland, Oregon, (Int. Des., 1930). Secretary international auto freight. Pencil sketches and portraits. Worked in a wallpaper and paint store in Spokane last spring. Gave lectures on design and interior decoration to mothers in F.E.R.A. program.

KATHRYN G. KJOSNESS (Mrs. Harlow Hudson), Mass. Inst. of Tech., Boston, Massachusetts, (Arch. & Des., 1931).

ROLF KLEP, 128 E. 35th, New York City, (Draw. & Paint., 1927). After two years in Port-

land which included copy writing, layout, and art work, spent five years in Chicago—three with the firm of Stevens, Sunblom and Stults, and remaining two free lancing during which time he did work for western advertising agencies. Has been in New York for the last three months.

GUY O. KOEPP, Carmel-by-the-Sea, California, Box 644, (Arch. Des., 1923). Practicing architecture.

MARY KOON (Mrs. Clarence Wick), 1011 S. E. 60th Ave., Portland, Oregon, (Gen. Art, ex-'31).

GEORGE KOTCHIK, School of A.A.A., U. of O., Eugene, Oregon, (Arch. Des., 1933). Working in the school.

HELENE KUYKENDALL (Mrs. Wm. W. Deadman), 509 S. Main St., Demopolis, Alabama, (Norm. Art, 1922).

CLARA E. LAMB (Mrs. Geo. L. Wilhelm), 2308 Fairmount Blvd., Eugene, Oregon, (Norm. Art, 1929). Housewife.

LEWIS A. LAMB, 6106 Princeton Ave., Chicago, Illinois, (Arch. Des., 1931).

HENRYETTA M. LAMOREE (Mrs. Francis T. Moon), 1335 S. E. Stark St., Portland, Oregon, (Int. Des., 1931). Housewife.

HENRY L. LANDT, 419 25th St., San Diego, California, (Arch. Des., 1932).

C. MEREDITH LANDAKER, Box 17, Rt. A., Ealem, Oregon, (Arch. Des., ex-'29). Marine radio operator.

J. ALDEN LANKER, 4607 S. E. Taylor St., Portland, Oregon, (Arch. Des., 1932).

FOOK TAI LAU, Dept. of Arch., National Central Univ., Nanking, China, (Arch. Des., 1924). Head of department of architecture.

ALICE B. LAUDIEN (Mrs. G. W. Foott), 1015 A. Ave., Mission Apts., Coronado, California, (Norm. Arts, 1929).

H. ABBOTT LAWRENCE, 925 Failing Bldg., Portland, Oregon, (Arch. Des., 1928). Worked as a draftsman in his father's firm for a year after graduation. A year at M.I.T. under Professors Emerson and Jacques Carlu was followed by the Lou Lewis Traveling Fellowship in Architecture which took him to Europe. After his travels he was employed by the American architect, Middlehurst, in Palma de Mallorca, Spain. Now busy in Portland. President of the University Alumni Art League. U.A.A.L. exhibition.

KENNETH LEGGE, 7505 S. E. 36th Ave., Portland, Oregon, (Arch. Des., ex-'24). Member of the Board of Arch. Examiners. Architect for the renovated house project in Portland in 1934. At present doing P.W.A. work in Klamath Falls.

HOWARD B. LEWIS, c/o Hugh Lewis, 118 Canal St., Placerville, California, (Arch. Des., ex-'33).

JESSIE LA RUE LEWIS (Mrs. Cedric B. Baldwin), Makaweli, Kauai, T. H., (Norm. Art, 1924).

MARGARET LITSCHER, 357 E. 15th St., Eugene, Oregon, (Norm. Arts, 1935). Assistant to Miss Kerns and Mrs. Houck.

KENNETH C. LONG, 245 W. 13th St., Eugene, Oregon, (Arch. Des., 1934, B. of Arch.).

MIL O. MARLATT, Bartle Court, Eugene, Oregon, (Arch. Des., ex-'33). Working for Shell Oil Co.

MILDRED McDERMOTT (Mrs. Roy C. Brady), 659 Jefferson St., Corvallis, Oregon, (Norm. Arts, 1930). Housewife.

FRED C. MACDONALD, Jr., 2805 N. E. 25th Ave., Portland, Oregon, (Interior Des., 1932). Working for Portland Woolen Mills.

HELEN G. McGEE (Mrs. Russell D. Henderson), Irvine, Alberta, Canada, (Norm. Art, 1927).

KEITH R. MAGUIRE, Kernville, Oregon, (Arch. Des., 1934, B. of Arch.). Timekeeper in a sawmill.

ESTHER MALKASIAN (Mrs. Kenneth D. Hiron), 768 W. 10th St., Eugene, Oregon, (Int. Des., 1931). Wife of prominent Eugene druggist.

RICHARD J. MARLITT, 303 Boldt Tower, Cornell University, Ithaca, New York, (Arch. Des., 1933). Received his degree in architecture last year; is doing graduate work at Cornell University.

DAYE MARSHALL, 1599 Moss St., Eugene, Oregon, (Norm. Art, 1930). Art supervisor and instructor in Roosevelt Jr. High School.

CLAIR C. MEISEL, Long Creek, Oregon, (Struc. Des., 1931). Working for state highway commission.

THELMA W. MELLIEN, 242 Powell St., E. Grand Rapids, Michigan, (Gen. Art, 1929).

MARJORIE MERRICK (Mrs. Emberson Wright), 5 Prospect Place, New York City, (Norm. Art, 1927).

HARRIET ALOISE MEYER, 2711 Summit Drive, S. W., Portland, Oregon, (Gen. Art, 1931). Teaching art in her home-studio. Summer of 1932 on a scholarship from Mills College. Studied sculpture with Alexander Archipenko. Studied in summer of 1933 with Gusto Steinhoff. Has been teaching at home for four years. Had gallery in home

for two years (1932-33). Affiliated with beaux art gallery from San Francisco. Taught in Rudolf Schaefer school in San Francisco in winter of 1933. U.A.A.L. exhibition.

HOWARD B. MINTURN, Rt. 3, Box 93, Salem, Oregon, (Struc. Des., 1932).

GEORGIA LOU MILLER, c/o G. O. Miller, 3464 E. Burnside St., Portland, Oregon, (Int. Des., ex-'33).

BASIL B. MILES, Apt. 205 Stockbridge, 1330 Boren Ave., Seattle, Washington, (Arch. Des., 1935).

JEAN E. MILICAN, Math. & Extension Dept., O. S. C., Corvallis, Oregon, (Norm. Art, 1925). Teaching.

TOM MORAN, c/o T. W. Moran, 361 Perry St., Oakland, California, (Arch. Des., ex-'32).

FRANCES IRENE MORGAN (Mrs. Clarence O. Carter), 435 Fourth St., Camas Washington, (Norm. Art, 1927). Teaching art.

BEATRICE MORROW (Mrs. Alfred Christopherson), Hermiston, Oregon, (Draw. & Paint., 1923).

FAY PATRICIA MURPHY, Box A-1, Carmel, California, (Arch. & Des., 1930).

ANDREW FOSTER MURRAY, 633-14th St., Santa Monica, California, (Arch. Des., 1933).

KATHERINE E. MUTZIG (Mrs. Fred West), Apt. 403, 2280 Pacific Ave., N. W., San Francisco, California, (Gen. Art, 1928). Housewife.

ELIZABETH GOODRICH NASH (Mrs. Peck), 2647 Morslay Rd., Altadena, California, (Norm. Art, ex-'27).

KATHRYN NICHOLSON, 796 S. 7th St., Marshfield, Oregon, (Norm. Art, 1925).

J. WALTER NEWELL, c/o Rex Newell, R. F. D. 1, Box 23, Newberg, Oregon, (Arch. Des., ex-'32).

WILMAR NORMAN, 2748 N. E. 19th St., Portland, Oregon, (Arch. Des., 1932). Portland Trust Company, property management department.

HOWARD P. NULL, 1925 Hill Drive, Los Angeles, California, (Arch. Des., ex-'32).

HELENGRAY GATENS O'BRIEN, 7305 N. Concord St., Portland, Oregon, U.A.A.L. exhibition.

HAROLD ONSTAD, c/o Whitehouse, Stanton and Church, Railway Exchange Bldg., Portland, Oregon, (Arch. Des., ex-'34). Working in office of Whitehouse, Stanton and Church, architects, in Portland.

HERMAN OPPENLANDER, West Linn, Oregon, (Arch. & Des., 1929). Teaching in West Linn High School.

HAZEL LOUISE PAETSCH, Banks, Oregon, (Norm. Art, 1932). High school teacher.

FRIEDA C. PAHL, 715 River Drive, Pendleton, Oregon, (Norm. Art, 1930).

GERTRUDE PARKER, 1732 Grant St., Denver, Colorado, (Norm. Art, 1930).

ELEANOR C. PATTEN (Mrs. Ivan Kafoury), 2321 N. W. Irving St., Portland, Oregon, (Draw. & Paint., 1932). Has been working for Meier & Frank Co., in Portland. Recently married. U.A.A.L. exhibition.

JOAN PATTERSON, Baker, Oregon, (Int. Art, 1931, B. of Arch.). Worked for some time as assistant to Professor Zane at the University and is now busy in Baker, Oregon, on her decorative work. She is active in the art life of the community. U.A.A.L. exhibition.

KENNETH PATTERSON, 975 22nd E., Eugene, Oregon, (Arch. Des., ex-'29). Now working for the telephone company in Eugene.

ELIZABETH PENNOCK, R. F. D., So. Coos River, Marshfield, Oregon, (Arch. Des., ex-'30).

MARION PENNINGTON (Mrs. Bernard Lindeman), Rainier, Oregon, (Gen. Art, 1930).

KATHERINE R. PETERSON (Mrs. Larsen), Box 244, Monmouth, Oregon, (Norm. Art, 1927). Teaching at Oregon Normal School.

MILDRED PIKE (Mrs. Chas. Dawson), c/o Shell Oil Co., Martinez, California, (Norm. Art, 1929).

FRANCIS N. PLIMPTON, Errol Station, Milwaukee, Oregon, (Norm. Art, 1928). Works in circulation department of Portland public library.

TRUMAN PHILLIPS, 2505 S. E. 67th Ave., Portland, Oregon, (Arch. Des., ex-'25). Working with Hollis Johnston at Bonneville.

AMY PORTER (Mrs. Lee Rapp), 2006 N. E. Davis, Portland, Oregon, (Arch. Des., 1931).

EDNA I. PRESCOTT, 1785 N. Capitol, Salem, Oregon, (Int. Art, 1931).

WALTER L. PRITCHARD, 1563 Lawrence St., Eugene, Oregon, (Sculp., 1931). One year tuition scholarship at Art Students League in N. Y. C. Exhibited in Eugene and Portland sculptured animals and figures. Figures and reliefs for P.W.A. project last year.

THEODORE POPE, 1405 S. E. 36th, Portland, Oregon, (Arch. Des., ex-'29). Working for Foster and Kleiser in Portland, construction department.

WILLIAM S. PROCTOR, 3048 E. Laurelhurst Dr., Seattle, Washington, (Arch. Des., ex-'32). Had his early training in Rome and Brussels under the watchfulness of his illustrious father, Phimister Proctor, noted sculptor of animal and western subjects. After several years under Prof. Willcox he has deserted temporarily the profession of architecture and is now assisting his brother-in-law, Campbell Church, Jr., in a yacht chartering business out of Seattle. Conducting expeditions of sportsmen and naturalists to Alaska. Has recently designed his own charming residence in Seattle.

ARTHUR L. REMMEN, 1229 G St., San Diego, California, (Arch. Des., 1928).

J. LAURIN REYNOLDS, 2876 N. W. Thurman St., Portland, Oregon, (Arch. Des., 1928). Worked as a designer for General Petroleum Company in Portland. Now working with Ernest Tucker, architect, in Portland. Has recently completed some residential work in California.

MERRILL D. RICHMOND, 622 Chester St., Bremerton, Washington, (Arch. Des., 1924). Working in P.O. Dept.

ARTHUR RIEHL, Arch. Dept., M.I.T., Boston, Massachusetts, (Arch. Des., 1932). Studying architecture at M.I.T., under Prof. Emerson. U.A.A.L. exhibition.

MARIE K. RING, Rt. 1, Oswego, Oregon, (Gen. Art., 1932). Teaching. Designs costumes and settings for local theatrical productions.

MILDRED E. RINNEL, Oakridge, Oregon, (Norm. Art, 1930). Teaching art.

OLIVE H. RITAN (Mrs. Dwight S. Hedges), Lake Oswego, Oregon, (Int. Des., 1931).

ALBERTA M. RIVES (Mrs. Lawrence T. Slauson), 3643 7th St., Chico, California, (Norm. Art, 1931).

BELL M. ROBINETTE, c/o W. D. Robinette, Summer Lake, Oregon, (Draw. & Paint., ex-'27).

LOYD ROBERTSON, Box 216, Rocky Ford, Colorado, (Arch. Des., 1927).

FRANK ROEHR, 3727 S. E. Carlton Ave., Portland, Oregon, (Arch. Des., 1927). Designer with Whitehouse, Stanton and Church.

JOHN ROGERS, Sch. of A. & A.A., U. of O., Eugene, Oregon, (Arch. Des., 1934). Working in the school.

EDWIN J. ROLL, c/o E. J. Roll, 828 N. E. 21st St., Portland, Oregon, (Arch. Des., ex-'34). Working in a Shell service station.

FLORENCE A. ROSS (Mrs. Clifton H. Boggs), 42 Fort Charles Pl., New York City, (Norm. Art, 1928).

LOUIS C. ROSENBERG, "Lomaro," Greenfield Hill, Fairfield, Connecticut, (Arch. Des., 1917). Mass. Inst. of Technology 1918. Technology Travelling Fellowship. Arch. practice in New York. Traveled in Europe. Studied under Sir Malcolm Osborn in England. Member of many etching societies, prizes and medals. Now working for the government in Washington, D. C.

SARAH ROULSTONE, 768 Redondo Ave., Long Beach, California, (Norm. Art, 1933).

ARTHUR RUNQUIST, Worcester Bldg., Portland, Oregon, (Arch. Des., 1919). Instructor in art department after graduation. Commercial work in Seattle, San Francisco and Portland. Shares the penthouse studio atop the Worcester Bldg. with his brother Al.

ALBERT RUNQUIST, Worcester Bldg., Portland, Oregon, (1921). Two years at Benson and three years at Grant High School in Portland teaching art. Commercial work in San Francisco.

FLOYD H. RUNK, 1208 S. E. 23rd Ave., Portland, Oregon, (Int. Des., 1929). Working in furniture department of Meier & Frank Co. in Portland.

KATE SCHAEFER (Mrs. Palmer M. Gunnell), 1222 Summit Ave., Arcadian Apts., Seattle, Washington, (Sculp., 1918).

FREDERICK A. SCHAFER, School of A. & A.A., U. of O., Eugene, Oregon, (Arch. Des., 1933).

MARIAN SCHLESSER (Mrs. Leroy C. Bendix), Colfax, Washington, (Norm. Art, 1927).

MILLARD H. SCHMEER, 1545 S. W. Elizabeth, Portland, Oregon, (Arch. Des., 1933, B. of Arch.). Working as draftsman on Boulder Dam project. Recently returned from trip to Europe which was also a honeymoon.

MARIAN SERREBRENNEKOV, 2600 S. Hoover St., Los Angeles, California. Painting and working in an art shop in Los Angeles. U.A.A.L. exhibition.

PAULINE F. SCHUELE (Mrs. Carl Kurz), 5821 S. E. Madison, Portland, Oregon, (Norm. Art, 1931).

MARIE SCHULDERMAN, 1724 N. E. 10th, Portland, Oregon, (Norm. Arts, 1927). Teaching art at Grant High School in Portland. Preparing thesis for master's degree.

LORA C. SCOTT (Mrs. Sprague), Enterprise, Oregon, (Norm. Art, 1926).

CORD E. SENGSTAKE, Jr., Seaside, Oregon, (Arch. Des., 1918). In insurance business.



ELLEN M. SERSANOUS (Mrs. Harold Franendorf), 3085 Broderick, San Francisco, California, (Draw. & Paint., 1933).

DOROTHY SHAW, 2906 S. E. Tacoma St., Portland, Oregon, (Norm. Art., 1931). Taught art in Tigard High School for three years, and now teaching in Girls Polytechnic. Studied with Steinhoff in Eugene on a Carnegie Fellowship. Now has a studio in the Fine Arts building in Portland, where she teaches creative illustration. U.A.A.L. exhibition. Treasurer of U.A.A.L.

LYDIA HERRICK HODGE (MRS.), 2915 N. W. Luray Terrace, Portland, Oregon, (Sculpture, 1927). Besides being busy keeping track of her geologist-professor husband, she finds time to execute many interesting commissions in her sculpture studio. Is secretary to the new University Alumni Art League and is its prime moving force. Has traveled extensively. Studied sculpture in Paris and has exhibited in most large cities in the United States. Besides being an artist of ability, she is a graceful hostess in faculty circles at both the U. of O. and O.S.C. Listed in "Who's Who" in art. U.A.A.L. exhibition.

HARRIETTE HOLLAND (Mrs. Chas. L. Hassmann), 4540 W. Broadway, Louisville, Kentucky, (Int. Des., 1930). Housewife. Husband is an army officer.

LOUISE HOLLENBACK, 815 S. Maryland Ave., Glendale, California, (Norm. Art., 1931). Formerly supervisor in Medford public schools. Now teaching art in the Rosemead school district in Los Angeles. Miss Hollenback had a Carnegie Foundation Art Scholarship in the University in 1934.

HELEN JEAN HOLT (Mrs. Tom LaFollette), 1107 17th Ave., Seattle, Washington, (Int. Art, 1929).

ELIZABETH HORSTMAN (Mrs. Irving Jensen), 2055 N. W. Lovejoy St., Portland, Oregon, (Norm. Art, 1931).

FRANCES HUMPHREY, 3892 N. E. Alameda, Portland, Oregon, (Int. Des., 1932). Painting. Exhibited with U.A.A.L. first annual. Studied painting last year at Chouinard School in Los Angeles.

HARLOW HUDSON, 436 Columbus Ave., Apt. 10, Boston, Massachusetts, (Arch. Des., ex-'30). At Massachusetts Institute of Technology. U.A.A.L. exhibition.

HELEN HUCHINSON, (Int. Des., ex-'32).

DOROTHY ILLIDGE, Glendale, Oregon, (Draw. & Paint., 1933).

LOIS IRENE SHIELDS (Mrs. Raymond Voegtly), Burns, Oregon, (Norm. Art, 1926).

KATHRYN S. SHORT (Mrs. Francis Schanck), 3343 N. E. 19th Avenue, Portland, Oregon, (Norm. Art, 1927).

BESSIE SCHOENBERG (Mrs. Dimitry Varley), 55 Morton St., New York City, (Draw. & Paint., ex-'29). Teaching dancing in Bennington, Vermont.

WILLIAM SHUMATE, 824 S. E. Peacock Lane, Portland, Oregon, (Arch. Des., ex-'33).

BEATRICE G. SIMON, Forest Grove, Oregon, (Norm. Art, 1933). Teaching in high school.

LAWRENCE T. SLAUSON, 3643 7th St., Chico, California, (Arch. Des., 1931).

HELEN E. SMITH (Mrs. H. D. Schade), 3125 N. E. 28th Ave., Portland, Oregon, (Draw. & Paint., 1924).

MARGARET B. SMITH, c/o Dr. Alan W. Smith, Medical Dental Bldg., Portland, Oregon, (Norm. Art, ex-'25).

IRVING G. SMITH, 3205 N. E. U. S. Grant Pl., Portland, Oregon, (Arch. Des., 1920). Working with U. S. Army engineers on models and maps.

WILBUR SOHM, 827 N. E. 25th Ave., Portland, Oregon, (Arch. Des., 1931). Designed shops for Siberian Ice Cream Co.

DELLA SOMERS, 426 E. 12th St., Eugene, Oregon, (Gen. Art, 1927). Doing weaving.

REX M. SORENSEN, Oak Grove, Oregon, (Sculp., 1932). Has done heads of Miss Lida Wilcox, Patsy Stewart, Governor Meier, Judge John B. Cleland and Bill Hayward, and is now doing a 9-foot educational memorial in stone for Lake Grove School. Teaches at his studio in Oak Grove. U.A.A.L. exhibition.

ARNOLD B. SOUTHWELL and SCHUYLER A. SOUTHWELL, 528 Lincoln Rd., Miami Beach, Florida, (Arch. Des., 1925 and 1932). Architectural brothers working together in their own office.

JOHN SPITTLE, Hotel Cornell, 715 Bush St., San Francisco, California, (Int. Art, 1934, B. of Arch.). Working in interior decoration department of a San Francisco department store.

MARGARET STAHL (Mrs. Edward D. Smith), 6740 S. E. 35th Ave., Portland, Oregon, (Norm. Art, 1926).

JOS. W. STANIFORD, Sch. of A.&A.A., U. of O., Eugene, Oregon, (Arch. Des., 1934).

ARTHUR GLENN STANTON, 2611 N. E. Mason St., Portland, Oregon, (Arch. Des., 1918). Massachusetts Institute of Technology 1920-21, M.

A. Student mission to France, 1921. Member of A.I.A. in 1926. Now member of firm of Whitehouse, Stanton and Church. U.A.A.L. exhibition.

MARTHA STEVENS (Mrs. Donald Hay), 1083 Lombard St., San Francisco, California, (Gen. Art, 1930).

FRED J. STEVENS, Jr., 19th Observation Squadron, Crissy Field, San Francisco, California, (Struc. Art, 1929). Aviator in U. S. Army Air Corps at Crissy Field.

PHYLLIS STOKES c/o Frank L. Stokes, Bucoda, Washington, (Norm. Art, ex-'33).

NADA STOCKS, 79 Broadway, Dobbs Ferry, New York, (Norm. Art, ex-'31). Teaching in St. Christophers School.

GLADYS STONE (Mrs. Henry Voiss), c/o J. E. Stone, Kelso, Washington, (Gen. Art, ex-'31).

KATHARINE TALBOTT, 1010 Craigmont Ave., Berkeley, California, (Draw. & Paint., ex-'30). Studied for a year at Art Students League, New York City. Now residing in Berkeley, California, "sculpting" in a converted garage for a studio. Active in the enthusiastic art circles of the bay region. Has recently completed, along with many other interesting commissions, a massive limestone fountain for a San Francisco park. Has exhibited in Oregon and California.

### ART LEAGUE ALUMNI!

Because the Alumni Office feels that this issue of Old Oregon will be of special interest to all graduates of the School of Architecture and Allied Arts, a free copy is being mailed to all those persons appearing on this list who are not now regular subscribers to the magazine. We cordially invite your subscription, believing that you would enjoy reading your alumni magazine regularly and keeping in touch with your classmates and former students in the school.—The Editor.

RICHARD SUNDELEAF, 7728 S. E. 7th Ave., Portland, Oregon, (Arch. Des., 1923). Practicing architecture in Portland. Architect for new Chi Psi house in Eugene.

NELLIEBELL SWAN (Mrs. Irvin F. Schulz), 2672 Emerald St., Eugene, Oregon, (Gen. Art, 1930).

ESTHER LEE TAYLOR, (Mrs. Herman H. Hob), Box 328, Eugene, Oregon, (Norm. Art, 1929).

ALFRED S. TELLER, 2445 N. E. 46 Ave., Portland, Oregon, (Arch. Des., 1924). In contracting business, Teiler Construction Co.

VERA ALICE THEIN, Box 104, Port Orchard, Washington, (Norm. Art, 1929). Teaching.

DOROTHY THOMAS, 2737 N. E. 62 Ave., Portland, Oregon, (Int. Art, 1933).

EDITHE THOMPSON (Mrs. H. G. Nash), 1536 Cherry Drive, Pasadena, California, (Gen. Art, 1931).

RAYMOND K. THOMPSON, Wentworth Inst., 151 Audubon Rd., Boston, Massachusetts, (Arch. Des., 1929). Teaching at Wentworth. U.A.A.L. exhibition.

HELEN THWAITE (Mrs. Webster Taylor), 1004 8th St., Bremerton, Washington, (Norm. Art, 1928).

FRANCES TIGGLEBECK, 1802 Third St., La Grande, Oregon, (Draw. & Paint., 1934).

JOKICHI TOMINAGA, 38 Tajima Cho, Azabu-ku, Tokio, Japan, (Arch. Des., 1916). Architectural practice.

BEATRICE I. TOWERS, Kingsley House, Cor. Larimer Ave. and Auburn St., Pittsburgh, Pennsylvania, (Sculp., 1924). Teaching.

DENNIS K. TRULOVE, Headquarters Battery, 14th Coast Artillery, Fort Worden, Washington, (Struc., 1932).

PAUL TOWNSEND, Honolulu, T. H., (Gen. Art, ex-'33).

DEAN H. TUTTLE, Tuckahoe, New York, (Int. Art, ex-'33).

HIROSHI TSUBOI, Tokio, Japan, (Arch. Des., 1929). Now on architectural mission in Manchukuo.

STEWART TUFT, 2834 N. E. 20th, Portland, Oregon, (Arch. Des., 1930). Working in office of Chas. Ertz, architect, in Portland. Oregon.

EUGENIA VAN CLEVE (Mrs. Wm. B. Pittman), c/o A. J. Van Cleve, Exeter, California, (Gen. Art, 1932).

ROBERT L. VAN NICE, Sch. of A.&A.A., U. of O., Eugene, Oregon, (Arch. Des., 1934). Working in the school.

MILDRED G. VAUGHAN (Mrs. LeRoy Draper), 5330 N. E. Halsey St., Portland, Oregon, (Int. Art, 1929). Housewife.

GEO. H. VAUGHAN, 2312 Union Ave., North Bend, Oregon, (Arch. Des., ex-'33). Lumber, exporting for Coos Bay Logging Co. Has made maps for Oregon Coast highway. Interested in wood carving.

HAROLD WAGNER, 1002 Crocker 1st National Bank, San Francisco, California, (Arch. Des., 1933). Painting. Exhibiting at the Legion of Honor in San Francisco. Architect. U.A.A.L. exhibition.

WILFRED M. WAGNER, Ashland, Oregon, (Gen. Art, 1933).

LELAND T. WALKER, 130 N. Belmont, Glendale, California, (Struc., 1927).

GEORGE R. WALLMAN, 1938 N. W. Irving St., Portland, Oregon, (Arch. Des., 1933, B. of Arch.). Now designer with Ernest Tucker, architect, in Portland.

EUGENE P. WALTERS, Suite 900, 111 W. 7th, Los Angeles, California, (Draw. & Paint., 1924).

JAMES J. WALTON, St. Highway Dept., Enterprise, Oregon, (Struc. Des., 1931).

HILDA F. WANKER (Mrs. Don Bichnase), Garden Home, Oregon, (Int. Des., 1929), M.F.A., 1931. Corresponding secretary U.A.A.L. Assistant to Mr. Zane. Worked as an interior decorator at Lipman Wolfe and Co. in Portland. Busy taking care of her young daughter.

GEORGE H. WARDNER, Jr., 3004 N. E. 21st, Portland, Oregon, (Arch. Des., 1929). Took graduate work at M.I.T. Worked in office of Cram & Ferguson in Boston. Free lance delineation in San Francisco and Portland. Now practicing architecture in Portland and doing government forestry survey work. U.A.A.L. exhibition.

EVELYN M. WARNEK, 138 S. Plymouth, Apt. 3, Rochester, New York, (Arch. Des., 1929). Studying psychology.

JO-ANN WARWICK (Mrs. Geo. F. Childs), 2355 Leavenworth St., San Francisco, California, (Norm. Art, 1926).

IONE WEDEMEYER, 2626 N. E. 22nd Ave., Portland, Oregon, (Norm. Art, 1930). Recently married to Philip Briegleb.

MILDRED WEEKS, 2155 Center St., Salem, Oregon, (Gen. Art, 1931).

CLARENCE H. WICK, 1011 S. E. 60th Ave., Portland, Oregon, (Arch. Des., 1931). U. S. Army engineers as draftsman.

ESTHER L. WILCOX, Silverton, Oregon, (Int. Des., 1934). Teaching art in Silverton.

LUCIA M. WILEY, 2655 Irving Ave. S., Minneapolis, Minnesota, (Draw. & Paint., 1928). Worked on murals in art department at the University. Has just had a successful traveling exhibition of her work in the middle west and the east. U.A.A.L. exhibition.

JUANITA L. WILKINSON (Mrs. Lloyd Lee, Jr.), 2031 N. Watts St., Apt. 11, Portland, Oregon, (Int. Des., ex-'31).

FRANK WILKE, 1130 Shattuck Ave., Berkeley, California, (Arch. Des., 1934).

LUCILE P. WIRTH, 745 W. 10th St., Eugene, Oregon, (Arch. Des., 1931). Working at the Broadway Department Store in Eugene.

JOSEPHINE WISEMAN (Mrs. H. James Overturf), 749 E. 13th, Eugene, Oregon, (Draw. & Paint., 1931). Around school. Sculpturing. U.A.A.L. exhibition.

GEORGE WOLFF, 2301 N. E. Ridgewood Dr., Portland, Oregon, (Arch. Des., ex-'23). Practicing architecture in the firm of Cash and Wolff.

MARY E. WOOD (Mrs. C. Longmire), 223 East 3rd St., Albany, Oregon, (Gen. Art, 1931).

RACHAEL P. WOODWARD, Bremerton High School, Bremerton, Washington, (Norm. Art, 1926). Teaching art and English in Bremerton High School. Studied art in summer school at W.S.C. last year.

CHLOETHIEL B. WOODARD (Mrs. Elliott Wright), 64 Park Ave., Bloomfield, New Jersey, (Arch. Des., 1932, B. of Arch.). Secretary on State Planning Commission under Henry Wright. Worked with Catherine Bauer on "Housing," a recent publication.

EMMABELL WOODWORTH (Mrs. Wallace S. Larkin), Newberg, Oregon, (Gen. Art, 1929). Housewife.

DOROTHY WRIGHT, 296 Columbia, Pomona, California, (Landscape, 1934).

GEORGE E. YORK, 1975 Onyx St., Eugene, Oregon, (Arch. Des., ex-'24).

RHOEN YORK, 1975 Onyx St., Eugene, Oregon, (Draw. & Paint., ex-'33). Painting. U.A.A.L. exhibition.

DOROTHY YORK, 2745 N. E. Weidler, Portland, Oregon, Worked at Meier & Frank in china department. To be married in July.

ELMER ZELLER, 3365 S. E. Stark, Portland, Oregon, (Arch. Des., ex-'30). Now with Richard Sundeleaf, architect, in Portland.

EUNICE ZIMMERMAN (Mrs. John R. Noyes), 221 W. Griggs Ave., Las Cruces, New Mexico, (Sculp., 1922).



# NEWS OF THE CLASSES

## 1883

Mrs. Luella Dunn Dorris, ex-'83, wife of George A. Dorris, ex-'80, died at her residence at the Tawno Kerr Apartments in Eugene, on April 5, following an illness of two weeks. Mrs. Dorris was a member of an early pioneer family and was a daughter-in-law of Ben F. Dorris, one of the first regents of the University of Oregon. She is survived by her widower, George A. Dorris, and three sisters, Amy L. Dunn, ex-'04, of Palo Alto, California; Mrs. Catherine Dunn Williams, ex-'81, of Eugene, and Mrs. Edna Diggles, of Berkeley, California, and one brother, Professor Frederick S. Dunn, '92, head of the Latin department at the University.

## 1888

Dr. Henrietta E. Moore and her sister, Mary B. Moore, of Portland were passengers on the President Cleveland, leaving San Francisco April 5 for a trip to the orient.

## 1889

Isabell Gray, ex-'89, pioneer resident of Philomath, died in Corvallis on April 3. Miss Gray had served as a teacher for many years, having retired from her profession several years ago to operate a small farm near Philomath.

## 1891

Mr. and Mrs. J. C. Veazie and daughter, Lyle Veazie, '28, of Portland, have been enjoying a boat trip to New York via Central American ports. Mr. Veazie has practiced law in Portland for many years.

## 1896

Frank Maxon Taylor, B.A. '96, M.D. '01, of 2025 Northeast Sixteenth Avenue, Portland, died on April 1. He is survived by his mother, Mrs. Mary B. Taylor, of Corvallis, and a sister, Edna Lytle. He was an uncle of Mrs. Alice Van Schoonhoven Chapel, '20, Los Angeles; Vera Van Schoonhoven, '20, and Ruth Van Schoonhoven, ex-'32, both of Portland.

Mrs. Jennie McNeal Cooper, Oregon pioneer, died at the home of her daughter, Mrs. Frances Cooper Kraus, at Aurora, on March 28. She is survived by six daughters: Mrs. Maude Cooper Ireland, ex-'96, of Brownsville, Mrs. Dorothy Cooper Parker, '97, San Francisco, Mrs. Pearl Cooper Moreland, ex-'99, Portland, Mrs. Mabel Cooper Williams, '07, Centralia, Washington, Mrs. Frances Cooper Kraus, '09, Aurora, Genevieve Cooper, '15, Seattle, Washington, and one son, James S. Cooper, Jr., ex-'10, Pomeroy, Washington.

## 1897

Fred Fisk, county judge of Lane county, who was appointed by Governor Martin one of nine advisers to Guy V. Lintner, federal re-employment director for Oregon, was elected chairman of the group at a recent meeting held in Portland. The board of nine, according to a new law passed at the last state legislative session, will advise Lintner in the establishment of state employment offices throughout Oregon.

## 1898

Howard Davis, of 4346 Northeast Ninetieth Avenue, Portland, died on April 18. Mr. Davis, who received his B.A. degree from Oregon in 1898, is survived by his widow, Mrs. Ada Davis.

William D. Simpson, ex-'98, died at the Keizer Hospital in North Bend, Oregon, on April 12, after an illness of five weeks. Mr. Simpson had served as lumber inspector for the Coos Bay Logging Company for several years prior to his illness. He is survived by his widow, Mrs. Gertrude Simpson, three daughters, Edith, Bernice and Willa Simpson, his mother, three brothers, and two sisters, Mrs. Ethel Simpson Worrel, '93, of North Bend, and Mrs. Edna Simpson Fahy, ex-'99, of Bandon.

## 1900

Will H. Ross, ex-'00, president of Ross and Marks, Inc., Portland realtors, was one of three recently appointed to represent the national committee on real estate taxation in Portland, according to an announcement received from Walter S. Schmidt, president of the National Association of Real Estate Boards.

## 1901

When the list of sons and daughters of Oregon alumni now attending the University was published in January Old Oregon, the name of Grace Eleanor Martin, who is taking the pre-library course with the class of 1937, was inadvertently omitted. She is the youngest daughter of Mrs. Sadie Atwood Martin, assistant matron at the Children's Farm Home at Corvallis, who received her master's degree from Oregon in 1901. Mrs. Martin is also the mother of Mrs. Margaret Martin Harrison, ex-'30, and A. Ray Martin, B.B.A., '31.

## 1902

"An Anatomical Study of Traumatic and Other Abnormal Tissues in *Carnegeia Gigantea*" by Dr. Ansel F. Hemenway, professor of botany at the University of Arizona, appeared in the November issue of the "American Journal of Botany." Dr. Hemenway, who holds B.A. and M.A. degrees from Oregon, was cited recently by the World Almanac for his work on the evergreens of the Pacific Northwest. After leaving the campus, Dr. Hemenway was in 1909 awarded an M.A. degree by Harvard College and in 1912 received his Ph.D. from Chicago.

## 1903

Homer I. Watts, of Athena, was elected president of the sixth judicial district bar association, composed of lawyers from Umatilla and Morrow counties, at the annual meeting held in Pendleton in April.

## 1909

Robert E. Hickson, senior engineer in charge of lower Columbia river maintenance for the United States engineers for several years, has been promoted to the newly established position of chief engineer in charge of all regular river and harbor projects in the Oregon district. Mr. Hickson first entered the district engineer's office in 1909 as an engineer assign-

ed to river work and has been connected with river and jetty projects since then.

Edgar W. Smith, ex-'09, of Portland, has been appointed a member of the State Milk Control Board. Mr. Smith, a democrat, has served as treasurer of the state central committee of his party and is a former owner of the Astoria Flouring Mills. He was later vice-president of the Kerr-Gifford Company in Portland and is now with the Oregon Mutual Life Insurance Company.

## 1910

Dean Alfred Powers, of the Extension Division of the State System of Higher Education, has been appointed a member of the board of the Museum Association of Oregon by Governor Martin.

Earl V. Morrow, M.D. '10, has returned to Portland and has offices at 404 Broadway building.

Blanche E. Ferdine lives at 1325 North Ross street, San Ana, California, and has a teaching position in the schools there.

## 1913

Mr. and Mrs. John M. "Jack" Hickson (Edith Sheehy, ex-'14) live in Portland where Mr. Hickson is an attorney. They have one son, Hamilton.

## 1914

Mr. and Mrs. Wallace B. Caufield and son have returned to Portland after an absence of six years, and will live at 355 Southwest Edgecliff road, Dunthorpe. They had been living in Peoria, Illinois.

Lyman G. Rice resides in Portland and is treasurer for the Farmers National Grain Corporation.

## 1915

Bert Jerard is in the insurance business in Pendleton. He is active in civic affairs and is a member of the board of Happy Canyon, night show of the Round-up.

## 1916

Sister Miriam Teresa, head of the department of social sciences at Marylhurst College, Oswego, recently attended the labor conference in San Francisco to which she was summoned by Secretary of Labor Frances Perkins, and invited to give her conclusions about labor problems, based upon her experience as a social service worker and an industrial investigator during the past twenty years. Sister Teresa, who before entering the sisterhood of the Holy Names, was Miss Caroline Gleason, of Portland, was awarded an honorary M.A. degree from the University in 1916 in Public Service and Research. Her acquaintance with Miss Perkins began in 1912 when she was making studies in the east relative to working conditions for women engaged in various industrial plants, while she was serving as the first secretary of the Oregon industrial welfare commission.

Martel I. Mickey, ex-'16, writes that in addition to his work with the California Economic survey, he is editing "The White Flag" which runs in the Junction City, Oregon, "Times" weekly, and which is the official organ of the Junction City plan of world supernational government, based upon American constitutional principles.

Kate Stanfield and Mary Johns, '19, are operating the historic Stanfield ranch at Echo.

Grace Arnold, LL.B. '16, writes that she is still secretary to Judge Curtis D. Wilbur, doing research work in the U. S. circuit court of appeals. Her mailing address is 319 Postoffice building, San Francisco.

Mr. and Mrs. H. Sherman Mitchell (Claire Raley) make their home in Walla Walla where Mr. Mitchell is city editor of the Walla Walla Bulletin. They have two sons.

## 1917

Robert M. Fitzmaurice, ex-'17, now resides in Salem and is with the Clifford Brown Wool company.

Mrs. Delphie Meek Meyers has been elected a member of the faculty of Santa Clara High school for next year. She will teach mathematics and science.

Alan L. Hart, M.D. '17, Seattle physician, is the author of "Dr. Mallory," a late novel dealing with present-day medical problems.

## 1918

Mr. and Mrs. James R. Bowler (Leura Jerard) reside in Spokane where Mr. Bowler is with the Federal Land bank.

Glenn Dudley, formerly of Athena, Oregon, now lives in Los Angeles and is superintendent of a pea cannery there.

## 1919

Henry F. English, principal of the Myrtle Creek public school for the past ten years, has accepted an offer to serve next year as principal of the high school at Oakland.

Frank D. Hunt, for many years superintendent of transportation of the Portland Electric Power company, died April 6, on the Southern Pacific train at Albany, Oregon, while en route home from a short vacation in California. He is survived by his widow, Mrs. Nellie Hunt, a daughter, Mrs. Irene Geneste, of Friday Harbor, Washington, and three sons, Frank D. Hunt, Jr., ex-'19, John B. Hunt, ex-'20, and Paul D. Hunt, '30, all of Portland.

## 1920

Clifford L. Chase, ex-'20, of 3219 Northeast Sixty-sixth avenue, Portland, died at a Portland hospital on April 14, following an appendicitis operation the day before. Mr. Chase was a member of the Oregonian copy desk staff for eight years. He is survived by his widow, Mrs. Sylvia Rowland Chase, ex-'19, and four children, Richard Lee, Betty Ann, Charles and Bobby.

Harold R. Brock, in the hardware business in Pendleton, recently completed a year as commander of the Pendleton post American Legion.

Margaret Monroe, faculty member of the Franklin High school, Portland, has retired from active service because of ill health.

John B. Hunt, ex-'20, is president of the Portland Oil company, a new concern in the oil distribution field. The firm has been appointed exclusive distributor in the Portland territory for Texaco diesel and fuel oils. Mr. Hunt, a former football player at the University, was for some time connected with the Liberty Coal and Ice company in Portland.

Helen Engberg Sherman, ex-'20, resides in Salem and is employed at the state house.

## 1921

Merle Best, ex-'21, teaches in the Hawthorne school, in Pendleton.

Janet Frasier, Kappa Kappa Gamma, is now Mrs. Clayton Slawter. Mr. Slawter is managing editor of one of the popular publication magazines. They reside at 135 West Fifty-eighth street, New York City.

Dr. Abram A. Groening, M.A. '21 (Jan), has resigned his position as dean of Albany College, effective August 31. Dr. Groening will remain as head of the science department to which he will devote his entire time.

## 1922

Francis E. Marsh, ex-'22, twin brother of Eugene E. Marsh, ex-'22, city attorney of McMinnville, has joined the latter's law firm of Vinton and Marsh, which will be known hereafter as Vinton, Marsh and Marsh. Francis Marsh was formerly district attorney in Jefferson county.

A daughter, Janie L., was born on March 30 to Mr. and Mrs. Troy A. Phipps, of 3141 Northeast Thirty-sixth, Portland.

Dorothy A. Miller, Kappa Kappa Gamma, was married in February to Len Douglas Owens, Jr., of Cushman and Wakefield, New York City. Their address is 307 East Forty-fourth street.

Phillip E. "Phil" Owens, ex-'22, is manager of the Hobart Manufacturing Company in Spokane, Washington. He is married and has one daughter, Caroline, who is seven.

Sylvester H. Burleigh, LL.B. '22 has his law offices in the West-Jacobson building in La Grande. He is married and has two children, Doris, who is nearly nine, and Sidney Loree, one and one-half years old.

## 1923

A daughter was born on April 19 to Emily Stoneberg Simmons (Mrs. Gilbert Simmons) of Route 2, Eugene. Her older daughter, Gladeus, is ten years old.

Frank "Ducky" Holmes, ex-'23, is employed in the new business department of the United States National bank in Portland.

A daughter, Verlaine Valerie, was born on April 10 to Mr. and Mrs. Frederic Berrian Dunn, of 1349 Columbus avenue, Burlingame, California. The new young lady is a granddaughter of Professor Frederic S. Dunn, head of the Latin department at the University, and Mrs. Dunn (Anna M. Matthews, ex-'95).

A daughter, Laurie A., was born on April 3 to Mr. and Mrs. Edward S. Goodell, of 3424 Northeast Eighteenth avenue, Portland.

Donald Randall, ex-'23, is practicing law in Milton.

Eugene S. Kelty has been promoted to the post of assistant administrator of the Oregon liquor control commission in addition to his duties as supervisor of the license and revenue division. Mr. Kelty will be second in command to Jack E. Allen, who was named administrator recently by the commission.

A daughter, Rosemary Leslie, was born on April 10 to Mr. and Mrs. Ivan F. Phipps of Portland.

## 1924

Fremont "Monte" Byers is sports and telegraph editor for the Pendleton East Oregonian.

Miss Erma King and James Mason Dillard were married in Olympia, Washington, on March 29. They will reside at 708

Westwood drive, Portland. Mr. Dillard is assistant United States district attorney, in Portland.

## 1925

Gordon E. Wilson writes: "Have been transferred from local manager of the Shell Oil company, Bend, to local manager at Salem. Mrs. Wilson (Ruth Corey, ex-'28) and myself are very happy to be back in the valley. Will be able to visit Eugene very easily now."

A daughter was born on April 10 to Mr. and Mrs. Harold Burkitt (Eleanor Holman, ex-'26) of Portland.

From Mrs. Helen Schuppel Steffanoff (wife of Dan N. Steffanoff, M.D. '34), in Honolulu, comes the following: "Received the card to be filled in and returned with pertinent information about us. And now I want to add an aloha greeting from Honolulu, 'the cross roads of the Pacific'—for it is surely that and more.

"Scenically speaking, it is one of earth's garden spots—housing a cosmopolitan population. East and West rub elbows companionably. Being a Honolulu, one is neither East nor West.

"We are in contact with Marjorie Flegel, '23, of Mid-Pacific 'U' here. Yes—another 'alum.' Lots of Oregon folk here—especially from Portland.

"Who knows but through this channel we may soon be in touch with school pals of whom we have lost track? Which reminds me—did you know that Charlotte Kirkwood, ex-'25, and for some years, Mrs. J. F. Geisler, is living in Westport, Oregon? Two little girls in her family, too. Mr. Geisler attended Oregon State College. And Katherine Edgar '27, M.D. '31, now Dr. Edgar, is resident physician at the Strong Memorial hospital, Rochester, New York.

"Helen Louise Steffanoff, '25  
"2260 Liliha Street  
"Honolulu, T. H."

Anne M. Mylne is instructor in chemistry and biology at the Mountain View, California, high school.

Dorothy Poill Durree, ex-'25, has taken over the millinery shop at the Hadley, Inc., store in Eugene, which will be known as "Dorothy's Shop." Mrs. Durree has had several years experience in millinery work in Portland, San Francisco and in Eugene.

## 1926

Oscar J. Closset, husband of June Reid Closset, ex-'26, of 4929 Southeast Stark street, Portland, was drowned on March 30 when he jumped from his stalled power boat, thinking it was about to be run down by the freighter, Walter Luckenbach. He is survived by his widow and one child, Joie.

A son, John A., was born on March 28 to Mrs. Ruth McCulloch Masterson, ex-'26 (Mrs. R. R. Masterson) of 6306 North Maryland avenue, Portland.

Carlton E. Sox, ex-district attorney of Linn county, died at his home in Albany on April 17. He was the father of Edward E. Sox, Salem attorney, now associated with the state corporation commission, Dr. Harold C. Sox, '27, San Francisco physician, and Ellis D. Sox, '31, a senior in the University medical school.

Mr. and Mrs. Waldon F. Byers (Dorothy Statter, ex-'29) live in Salem where "Bus" is with the Texaco company.

Helen Scott Cantine, formerly director for the Portland council of Girl Scouts, is now local director of the Pasadena, California, Girl Scouts.

Gertrude Harris is a member of the Pendleton High school faculty.

Mrs. K. Jane Seel Williamson, ex-'26, and Frank H. Cole were married in Hankow, China, on February 19. Mr. Cole is a mechanical and aeronautical engineer on the staff of Marshal Chang Hsueh-Liang with headquarters in Hankow, where the couple will reside.

Margaret Livesley, ex-'26, and sister, Ethel Livesley, of Salem, have returned from an extended cruise around the world. They spent most of March in the British isles with the English branch of their family, both in London and down in Kent.

A son, Thomas W., Jr., was born on March 20 to Mr. and Mrs. Thomas W. Dant, of Portland.

1927

A son, Rolla Ware, was born on March 24 to Mr. and Mrs. Hugh Biggs, of 2836 Northeast Tenth avenue, Portland. Their daughter, Suzanne, was two years old in January. Mr. Biggs, former dean of men on the campus, is assistant United States attorney, in Portland.

John L. Wilson, M.S. '27, is director of research for Economics Laboratory, Inc., at St Paul, Minnesota. Mr. Wilson is still single.

Faith Jean Kimball and John Edwin Black, ex-'28, were married at Independence on March 16. Mr. and Mrs. Black will reside at Independence where he has a position with the Independence Enterprise. Mrs. Black, following her graduation from the University in 1927, attended Columbia University in New York from which she was granted a one-year secretarial certificate, and since 1930 has been serving as secretary to J. A. Churchill, president of the Oregon Normal schools.

A son, Robert C. Jr., was born on April 6 to Mr. and Mrs. Robert C. Thurston, of 3314 Northeast Twenty-fifth avenue, Portland.

A son, Lynn Allen, was born on March 23 to Mr. and Mrs. H. Lynn Jones of Portland.

A daughter, Katherine L., was born on March 21 to Mr. and Mrs. Andrew L. Rapp (Amy K. Porter, '31) of 2006 Northeast Davis, Portland.

A daughter, Nell L., was born on April 4 to Margaret Swan Effinger (Mrs. Alton K. Effinger), of 2023 Northeast Thompson, Portland.

Mrs. Eloise Huggins Haines, ex-'27 (Mrs. Frederick Haines) and small son were March visitors to Portland. The Haines' are moving from San Francisco to Seattle.

Lucille Pearson is teaching in the high school at West Linn.

G. Richard Eckman, ex-'27, district manager for the Northern Life Insurance company in Eugene, has resigned to accept a general agency appointment in Portland. During the eighteen months Mr. Eckman has had the Eugene territory, since coming from Los Angeles, the company's production in this part of Oregon has more than doubled.

C. Laird McKenna, Portland attorney, was appointed early in April the NRA compliance director for Oregon, the appointment coming from Washington, D. C. He has been connected with the Oregon NRA headquarters for about a year and a half as legal adviser.

Oscar E. McKinney, late of 7854 North Washburne avenue, Portland, died in April following a long illness. He is sur-

vived by his widow, Mrs. Dorothy Abbott McKinney, '26, and by his parents, Mr. and Mrs. J. S. McKinney.

1928

Margaret Smith, of Yakima, Washington, recently returned home from a year spent in Europe.

Homer J. Dixon, principal of schools at Madras and former University football star, has been elected principal of schools at Wasco, succeeding Paul R. McCulloch, '23, who has been elected principal at The Dalles for next year.

A daughter, Carol Anne, was born on April 21 to Mr. and Mrs. Kenneth G. Wilshire (Ellen G. McClellan, '26) of Ashland.

Joseph G. Wilson, B.S. '28, M.D. '31, is located at Moscow, Idaho, and has a good practice.

Mr. and Mrs. La Verne Pearson ("Teddy" Swafford, '29) reside in Pendleton where Mr. Pearson is in the sheep business with his father, Enoch Pearson.

Mr. and Mrs. Lawrence W. Bome (Muriel A. Harrison, ex-'28) live at 1504 Southeast Madison Street, in Portland. They were married last November.

1929

A son, Paul M., was born on April 3 to Mr. and Mrs. Herman F. Oppenlander of West Linn, Oregon.

A son, Roy L., Jr., was born on March 3 to Mr. and Mrs. Roy L. Herndon, of Mesa, Arizona. Mr. Herndon, Sr., who is practicing law in Mesa, writes that from

the first the young man has expressed himself with great force and vigor.

Wesley V. Frick, B.S. '29, M.D. '31, is enjoying a good practice at Dayton, Washington.

Edward G. Daniel, B.A. '29, M.A. '31 (Jan.), who has been doing graduate work at Harvard University, has accepted the position of assistant professor of economics at that institution.

Marvin C. Davis, ex-'29, is completing his course in medicine at Stanford University this spring and will serve his internship at St. Luke's hospital in Kansas City.

Maisie V. Wetzel is employed as health nurse at the Southern Oregon Normal School at Ashland.

Arthur "Art" Anderson, ex-'29, lives in Pendleton and is with the Northwest Cities Gas company. He is president of the Junior Chamber of Commerce and is a member of the Happy Canyon board.

Mrs. Marion Look Miller, ex-'29 (Mrs. James F. Miller), of Portland, sailed from Seattle late in March on the American Mail liner, President Jackson, for Shanghai, to spend the summer with her sister, Mrs. Eleanor Look Marden, ex-'31, (Mrs. John Victor Marden).


Mr. and Mrs. Wade Newbegin (Margaret E. Hall, ex-'30), of Portland, have moved into the new home they recently built on Greenhills.

Mr. and Mrs. Glenn D. Duncan (Dorothy M. Riordan) live at Haines, Oregon. Their small son, James, will be one year old in June.

Elsie V. Moller is a member of the faculty of the Marshfield High school this year.

Lungwha Pagoda,  
Shanghai





Spacious Promenade Deck, M. S. Hikawa Maru

## TO THE ORIENT IN N. Y. K. LUXURY LINERS


Whether it's a conducted tour or an independent trip N.Y.K. offers you modern motor liners with modern ship comforts and world-famous meals . . . with fares equally attractive.

Seattle to	Cabin Class	Tourist Cabin
YOKOHAMA (and return) .....	\$375	\$195
KOBE (and return) .....	390	202
SHANGHAI (and return) .....	435	225
HONGKONG (and return) .....	465	232
MANILA (and return) .....	495	232

Effective April 1 to July 31 going; return good to October 31. Also sailings direct from Portland and San Francisco.

**TOURS** of every nature available to you this summer—three leaving from Seattle in June—all led by experienced travelers.

Seattle—1404 4th Ave.  
Portland—Powell Shipping Co., 407 Railway Exchange Bldg.



## 1930

Mr. and Mrs. Joseph Erkenbrecher (Ruby M. Hayes, ex-'30) of Pasadena, California, recently visited Mr. and Mrs. Roy L. Herndon at their home in Mesa, Arizona. Young Joseph Hayes Erkenbrecher is now ten months old.

A daughter, Barbara Jane, was born on February 10 to Edna Dunbar Moser (Mrs. Ernest H. Moser) of Kribi, Cameroun, West Africa.

Mr. and Mrs. Roy Davis (Thelma J. Brock, ex-'30) of Pendleton, left recently for Piedmont, California, to visit Mrs. Davis' parents, also her brother and sister-in-law, Mr. and Mrs. Harry L. Brock (Editha Barthel, '29).

Edward N. Dunn, M.D. '30, is located at Moscow, Idaho.

Carl Gregory, circulation manager of the Oregon City Enterprise since 1931, has resigned to take a position with the Portland Oregonian's country circulation department.

Ione Wedemeyer and Philip Briegleb were married in Portland on April 13. They will live at 2867 Southwest Greenway avenue, Portland. Mrs. Briegleb is a member of Apha Phi sorority.

A daughter, Gayle Marie, was born on April 13 to Mr. and Mrs. Harold L. Davidson (Marjorie I. Douglas, ex-'32) of Portland. Mr. Davidson is deputy city attorney.

Ralph H. Millsap is city reporter for The Dalles Chronicle.

Evelyn Hollis, who taught in the Woodrow Wilson Junior High school last year, is teaching English in the Eugene High school.

Mr. and Mrs. C. W. Clements (Arlene R. Earhart) live at Route One, Central Point, Oregon.

Miriam B. Campbell is a member of the faculty at the Arlington High school this year. Miss Campbell's home is in Portland.

## 1931

Dorris Hardy and John M. Walker, '28, were married in Eugene on April 7. They will reside at the Wilder apartments, 259 East Thirteenth avenue, Eugene. Mrs. Walker is the daughter of Mr. and Mrs. Charles A. Hardy (Emma Dorris, '89, M.A. '90) of Eugene, and is a member of Kappa Alpha Theta sorority. Mr. Walker belongs to Phi Delta Theta fraternity.

Leone C. Barlow and John Edgar were married in Portland on April 4. Mrs. Edgar is a member of Alpha Gamma Delta sorority at the University.

Mrs. Pauline Lehman Vaaler, ex-'31 (Mrs. Adrian Vaaler), has been visiting her parents, Mr. and Mrs. P. H. Lehman, of route 3, Eugene, from her home in Grand Forks, North Dakota.

A daughter, Grace J., was born on April 7 to Grace Vath Elle (Mrs. Ralph C. Elle) of 1827 Southeast Fifty-seventh avenue, Portland.

Lloyd A. Wheelwright, M.D. '31, who has been assistant Multnomah county physician at Portland, is locating for general practice at Grangeville, Idaho.

Eleanor M. Welcome, ex-'31, is employed as a deputy sheriff at Burns, Oregon.

Dr. Francis Tucker Jones is professor of chemistry at Pacific University at Forest Grove this year. Dr. Jones received

his bachelors degree from Pacific University, his M.A. from Oregon in 1931 and later his doctor's degree from Cornell.

Violet A. Grek, ex-'31, and Clement M. Sanders were married in Portland on March 17. They will reside at Newport.

Edgar J. Lewis, M.D., is practicing at Waitsburg, Washington.

Margaret Elizabeth McGee, ex-'31, and Kenneth Richard Curry were married in Portland on March 18. Mrs. McGee is a member of Gamma Phi Beta sorority and Mr. McGee belongs to Sigma Alpha Epsilon fraternity, Phi Delta Phi and Friars.

Elise Creighton Sundbom and Phil Manning were married last November 4 in Kelso, Washington, according to a recent announcement. Mrs. Manning is a member of Alpha Phi sorority.

Dorothy Sue Mutzig and Joseph O. Freck, Jr., '31, were married, in Portland, on March 7. Mrs. Freck is a member of Alpha Chi Omega sorority and Mr. Freck of Sigma Phi Epsilon fraternity. The couple will live in Portland where Mr. Freck is in business.

Walter Norblad, Jr., B.S. '31, J.D. '32, has been appointed a member of the public relations committee which will cooperate with the state re-employment director, Guy V. Lintner. Mr. Norblad served as representative during the last legislative session.

## 1932

Mrs. Margaret Keep Long, wife of Watt A. Long, M.A. '32 (Sept.), of 3021 Northeast Fremont street, Portland, was drowned in the Willamette river on March 22. Mrs. Long had been prominent for many years in Portland musical circles. She had

# Oregon Summer Sessions

SIX SESSIONS IN AN IDEAL CLIMATE FOR SUMMER STUDY AND RECREATION

University of Oregon  
EUGENE

University of Oregon  
PORTLAND

Oregon Normal School  
MONMOUTH

Oregon State College  
CORVALLIS

Southern Oregon Normal School  
ASHLAND

Eastern Oregon Normal School  
LA GRANDE

Opening date for College and University, June 24 — registration fee \$20 for six-weeks session, \$10 for post session; opening date for Normal Schools, June 10 — registration fee \$11.50 for six-week session, \$14 for eleven week session.

A preliminary bulletin lists courses in all institutions,  
followed by full descriptive institutional  
catalogues.

Address: Director of Summer Sessions  
814 Oregon Building  
Portland, Oregon  
or The Institution

Authorized by State  
Board of Higher Education



*You're Invited to*  
**DEL MONTE**



BRASSIE SHOT

Del Monte is a private estate on the Monterey Peninsula close to San Francisco and a comfortable day's run north of Los Angeles. Here, on 20,000 pine and cypress covered acres, you're invited to come and enjoy yourself; to play the championship Pebble Beach and Del Monte golf courses; to swim in outdoor pools or in the blue Pacific; to use as you will the hundred miles of shaded bridle path, the tennis courts, the polo fields; to motor on the winding, scenic 17-mile drive.

Here, too, not five minutes from Hotel Del Monte or from Del Monte Lodge at Pebble Beach, you'll find the crude adobe buildings of Old Monterey, capital of Cali-

fornia under three flags. Nearby is Carmel, the artists' refuge, and Carmel Mission, founded in 1771 by the kindly Junipero Serra who chose this enchanted place to be the home of all the California Missions.

Two people can live in a sunny, outside room with bath at Hotel Del Monte (with all meals included) for as little as \$7.50 each a day; for one person, \$8.50. At Del Monte Lodge, in reality a clubhouse on the famous Pebble Beach Links, the rates start at \$3.50 a day European Plan. Discounts are in effect for stays of a week or longer. For literature or for reservations, address Carl S. Stanley, Manager, Hotel Del Monte, Del Monte, California.

## **HOTEL DEL MONTE**

and DEL MONTE LODGE at PEBBLE BEACH

*Carl S. Stanley, Manager*

# Cruising BENEATH THE MIDNIGHT SUN



**E**XPLORING NEW LANDS! Meeting new people! Thrilling at strange sights! Finding a new freshness and zest in living! Cruising to Alaska is crammed full of such experiences. For here is a land so fascinating and vast in scenic splendor that it leads your fancy on dizzy flights.

Yesterday, quiet sapphire bays entranced you. Today, close-by shores and deep-walled fjords lure you. Tonight, a crazy sun turns artist and stays up all night to display her fanciful colors. Tomorrow, you'll be astounded by massive "living" glaciers. Each day your eye climbs majestic mountain peaks up into the sky. Then follow interesting days exploring Alaska towns...totem poles make faces at you...you see reminders of gold-madness. Cool mountain trails lead to a profusion of flowers...to waterfalls and leaping salmon...to hidden lakes that are like deep wells of jade-green ink. And always there are gay evenings and happy days on friendly decks.

This summer, when Alaska days are delightful, plan to cruise up-top. There's a thrilling treat for the whole family here...and all for such a moderate outlay. The coupon will bring you colorful Alaska-cruise literature. Read it...study it...and, well, we'll be seeing you close up-under the midnight sun.

Only The Alaska Line takes you to ALL Alaska. See your local Travel Agent or Dollar, American Mail and Pacific Steamship Lines. [General Agents]

#### GOOD-NATURED MAP

Send 10c for good-natured map of Alaska. Instructive... humorous, and of interest to the whole family.

#### FARES INCLUDE BERTH AND MEALS

AS LOW AS **85** FIRST CLASS  
ROUND TRIP FROM SEATTLE

**ALASKA  
STEAMSHIP CO.**  
Room 552 - Pier Two  
SEATTLE

Please send me Alaska Vacation Cruise literature   
Good-Natured Map   
Name.....  
Address.....  
City..... State.....

received B.M. and M.A. degrees from Pacific university at Forest Grove and was for five years head of the junior department of Pacific Conservatory. Survivors are her husband, Mr. Long, who is principal of the George school in Portland, and small daughter, Lois Elinor.

Wilbur F. Preble, president of the Spokane, Washington, Junior Chamber of Commerce, has been appointed to the Pacific Northwest regional planning board.

Edith E. Hollenbeck and Earl W. Harbin, '30, were married in Portland on April 6. They will live at apartment 103, 816 Southeast Twenty-ninth, Portland. Mrs. Harbin is secretary in the department of nursing education, University of Oregon Medical School.

A son, Laurel III, was born on April 9 to Mr. and Mrs. Laurel M. Hoyt (Ruth L. Frazier, '33) of 517 Bryant, Walla Walla, Washington.

Miss Josephine Mears and John P. McVay, M.D. '32, were married in Seattle on April 11. Mrs. McVay is a graduate of Vassar College.

A son, Charles L. II, was born on April 3 to Mr. and Mrs. C. Lauren Deach (Claribel M. Tathwell, ex-'32) of 3604 North Commercial avenue, Portland.

The marriage of Dorothy Barthel and Ralph Laumeister was a January event. They are living in Pendleton.

Myrtle McDaniel is doing social service work in Portland.

Elizabeth Blew, ex-'32, and Phil T. Liddy were married in San Francisco on March 24. Mrs. Liddy is a member of Delta Delta Delta sorority on the campus. The couple will reside at the Graystone apartments, San Francisco.

Ernest McKittrick, who was a graduate assistant on the campus last year, now has a graduate assistantship at the University of California.

Dorothy H. Lindeman is music supervisor in the St. Helens public schools.

Delilah B. Endicott, who taught in the high school at Thurston last year, and has been doing graduate work at the University this year, will resume her former position in the Thurston school for 1935-6.

William T. Starr, M.A., '32, graduate assistant in Romance languages, at the University, has been appointed national secretary of Sigma Delta Pi, Spanish honorary.

Gerald L. Murray, ex-'32, is employed as a salesman for the Neon Sign Company in Eugene.

Richard H. Torrey, ex-'32, whose home is in Altadena, California, visited the campus recently. Mr. Torrey is employed as a traveling salesman for knit goods, jersey wear, etc., out of New York City.

Lloyd H. Brown is teaching in the Reedsport High school.

Almona A. Kerry is a member of the faculty of the Waldport High school.

Margaret Kent Atwood, of Corvallis, is teaching English in the Monroe high school this year.

Mr. and Mrs. R. M. Caldwell (Ella Hattan) live at 1955 Northwest Hoyt street, Portland. Mrs. Caldwell teaches at the Couch school.

Emmajane Rorer and Ralph Clifton Cave were married in San Francisco on March 30. Mrs. Cave, a former resident of Eugene, is a member of Kappa Alpha Theta sorority. Mr. Cave is a graduate of Culver Military Academy and is in business in San Francisco, where they will live.

1933

Mr. and Mrs. S. M. Mikkelsen (Sara Jullum) are living in Portland at 2125

Southeast Grant street. Their marriage was an event of last December.

**Ruth Staton**, ex-'33, and **Laurence E. Fischer** were married in Eugene on Easter Sunday. They will reside in Portland. Mr. Fischer is a member of Phi Kappa Psi fraternity on the campus, and is connected with the Morrill and Sturgeon Lumber company.

**Orville "Red" Bailey**, former football star at the University, has been appointed to coach at the McMinnville High school next year, succeeding **George L. Allison**, '27, who will coach at the Baker High school. Mr. Bailey has been coaching at Dallas High school this year and before that spent a year as coach at Reedsport.

**Mary A. Schaefer** is Pendleton correspondent for the Walla Walla Bulletin.

The marriage of **Margaret Louise St. Clair**, ex-'33, and **Theodore Okrasinski** last June 18, was recently announced on the campus. They were married in Aberdeen, Washington, and are living at 604 Southeast Seventy-eighth avenue, Portland.

Miss **Edna Reindeau** and **Lucien C. Liston**, ex-'33, were married in Juneau, Alaska, on April 13. They will live in Juneau where Mr. Liston is in business. Mrs. Liston is an alumna of Washington State College.

**James F. Henderson**, ex-'33, is a student at the Northwestern School of Commerce, Portland.

Mr. and Mrs. **W. Russell Burdett** (Margaret L. Frey, ex-'33) have taken a residence at 4437 Northeast Ninetieth avenue, Portland, near Maywood park. Mr. Burdett, who will be remembered for his activity in golfing circles, is now working for Liggett and Myers Tobacco company.

**Cleo Hoselton**, who has been employed for the past several years by C. F. Hyde, Eugene realtor, and who had charge of the local office of the government farm loan commission, left for Washington, D. C., early in April, where she had accepted a position as stenographer for the government security and exchange commission.

A son was born on April 3 to **Wilda Dyer Hostick**, ex-'33 (Mrs. Roy Hostick), of Junction City.

**Ruth Charlotte Bracher**, ex-'33, and **Fred A. Anderson**, ex-'33, were married, in Portland, on March 9. They will make their home in Portland. Mrs. Anderson is a member of Chi Omega and Mr. Anderson of Sigma Phi Epsilon.

Mr. and Mrs. **Eugene F. Bettner** (Eleanor H. Parry, ex-'33) whose marriage was an event of last fall, live in Portland at the Bryson Apartments, East Twelfth and Harrison Street.

**Anne Kistner** returned to her home in Portland recently after spending the winter in Boston.

**Clyde Dodge**, who graduated from Oregon in 1933, majoring in English, is teaching in the Waldport High school.

Mr. and Mrs. **Carson G. Mathews** (Betty Butler, ex-'35) moved recently to Pendleton from Portland. Mr. Mathews is now eastern Oregon manager for the Zellerebach Paper company.

**Milton L. Mauzey** is employed as secretary and stenographer for the Barbey Packing company at Astoria. His mailing address is 345 Twelfth street.

**Rudolph M. Crommelin, Jr.**, ex-'33, is studying medicine at Creighton University.

**Roscoe S. Krier**, ex-'33, state representative from The Dalles, has been appointed by Governor Martin as a member of

the advisory council for federal and state employment to assist Guy Lintner, employment officer.

**Ilo W. Wilson**, ex-'33, is assistant district manager of the Woodmen of the World lodge, in Portland.

**Elizabeth Keene**, ex-'33, will not teach in the grade school at Westfir again next year since she plans to attend school.

The morgue in the Portland Oregonian office is a neatly arranged array of files, pictures and such, made that way by "Ed" Cruikshank.

Mr. and Mrs. **Richard U. Ford** (Amelia E. Anderson, ex-'33) are living at 1514 West Twentieth street, Los Angeles. Janis Lee is now six months old.

Since their recent marriage, Mr. and Mrs. **Laurence E. Fischer** (Ruth Staton) are living at 1512 Southeast Sixteenth avenue, in Portland.

1934

Miss **Elizabeth T. Thayer** and **Charles A. Van Dine** were married in Portland on March 30. Mrs. Van Dine is an alumna of the College of Puget Sound in Tacoma. Mr. Van Dine graduated from the University last June and is a member of Sigma Alpha Epsilon fraternity. They will reside in Portland.

**Frances E. Row**, ex-'34, and **John C. Jones** were married in Vancouver, Washington, on March 22. They are living at 3046 Northeast Holladay street, Portland.

**Kathryn Goodpasture**, ex-'34, is in training at St. Vincent's hospital, Portland.

**Gerald B. Gray** writes requesting that his address be changed from Prineville to Eagle Point, Oregon. He is working for his father.

**Geneva Turner** is employed as a case worker in the family relief unit at Portland.

**May Masterton**, of Eugene, has been elected to teach another year in the Lorange High school.

**Earl E. Boushey**, M.S. '34 (Jan), has been elected president of the University of

Oregon chapter of Phi Delta Kappa, national education honorary.

Miss **Roberta Jane Mullineaux** and **Harry Brand Cooper**, ex-'34, were married in Beverly Hills, California, on April 2. Mr. Cooper is an affiliate of Phi Gamma Delta fraternity.

Mr. and Mrs. **James R. Ferguson** (Marion Sheldon, ex-'35) make their home in Pendleton. Mr. Ferguson is in the automobile business with his father, George Ferguson.

**Charles E. Bockman, Jr.**, ex-'34, of Portland, has successfully completed the first four months of an intensive training course at Randolph field, Texas. Upon completion of the course, Mr. Bockman will enter Kelly field for advanced work preliminary to his appointment as second-lieutenant in the army air corps.

**Velma Jane Hamilton** and **Harry C. Visse**, '33, were married in Corvallis on March 31. Mrs. Visse is a member of Alpha Delta Pi sorority on the campus and Mr. Visse of Phi Sigma Kappa fraternity. They will reside in Portland.

Mr. and Mrs. **John F. Kilkenny** (Virginia Sturgis, ex-'34) live in Pendleton where Mr. Kilkenny is a member of the law firm of Raley, Kilkenny and Raley. They have one son, Mike.

**Frances Marks**, ex-'34, and **Jack R. Cate** were married on March 9 and are making their home in Medford. Mr. Cate is office manager of the Firestone Service stores.

Mr. and Mrs. **Keith R. Maguire** (Margaret Ellen Douty, '29) live at Depoe Bay and work at Kernville, Oregon. Mr. Maguire has a job as timekeeper in a sawmill there and Mrs. Maguire as stenographer. Mr. Maguire majored in architecture on the campus and plans to become an architect some day.

A daughter was born on April 12 to **Elizabeth Steiwer McElvenny** (Mrs. Ralph T. McElvenny) of Washington, D. C. The new young lady is a granddaughter of Senator and Mrs. **Frederick Steiwer**, now in Washington.

**Clarence J. Pike**, M.A. '34 (Oct), is president of the Portland Bible Institute, which is completing one of the best years of its existence with the largest all-time enrollment. Mr. Pike recently announced that the school of music in the Institute will be enlarged another year to encompass a three-year course, with introduction of a completely new music curriculum.

**Mrs. Gertrude Grogan Phillips**, ex-'34, who for the past five years has been secretary to Miss Florence Alden, professor of physical education at the University, has resigned to accept a position in the Umpqua National Forest office, at Roseburg. The position in Miss Alden's office will be filled by **Elmadoris Havemann**, '33.

Mr. and Mrs. **John J. Gross** left Eugene for California, early in February. They are now living at 2328 Fulton Street, in Berkeley; Mr. Gross is planning to enter the University of California next fall to do graduate work.

Mr. and Mrs. **Marshall F. Wright** (Caroline Holt Card) who were married last November, are living at 1519 B. Wilder Avenue, Honolulu, T. H. Mr. Wright is connected with the Honolulu Iron Works.

**Alvhild Ericksen** writes from eastern Oregon: "I enjoy OLD OREGON very much. It is quite an experience teaching music and English in the Crane High school. This is a dormitory school where the students live while going to school. Some of the students live 150 miles apart.



EDITOR AND MANAGER.....ROBERT K. ALLEN  
 NEWS EDITOR.....MERLIN BLAIS  
 CIRCULATION MANAGER.....VERA POWERS

OFFICERS


University of Oregon Alumni Association

- Merle Chessman, '09.....President
- James H. Raley, Jr. '31.....Vice-President
- Henry Fowler, '14.....Three-Year Director
- Omar Palmer, '32.....Two-Year Director
- Robert K. Allen, '32.....Secretary-Treasurer

Subscription price: One year, \$2; three years, \$5; Alumni subscribers to OLD OREGON are granted full membership in the Alumni Association. Two weeks notice required for change of address. When ordering a change, please give both the new address and the old address. Address all communications to: OLD OREGON, University of Oregon, Eugene, Oregon.





  
**MODERN**  
**ENGRAVING COMPANY**  
 935 Oak Street -- Eugene, Oregon

Crane is in the wide open spaces of sagebrush with lots of snow. We had dinner for Oregon alums in Burns last fall celebrating Oregon's founding."

**Helen M. Valentine** is teaching in the high school at Rufus, Oregon.

**Belding E. Richmond**, formerly of Eugene, is working for the Watkins Company, in San Diego. His mailing address is 3421 Van Dyke Avenue.

Miss Fern Naylor and **Leonard E. Hall**, ex-'34, were married, in Longview, Washington, on February 3. They will reside at the Marian Court Apartments, 2062 Northwest Marshall Street, in Portland.

**Mr. and Mrs. Stewart C. Carlson** (Angeline Fisher) are living in Cottage Grove where Mr. Carlson is superintendent of the remanufacturing plant of the Woodard Lumber Company.

**Elizabeth L. Bruhn**, who graduated last June, has a teaching position in the high school at Newport. Miss Bruhn's home is in Portland.

**Janice J. McKinnon** has a secretarial position with Geigy Company, Inc., importers, of Portland. Miss McKinnon was formerly secretary to Dr. R. W. Leighton, Executive Secretary of Research, on the campus.

### 1935

**Margaret Wickersham**, ex-'35, of Portland, the winner of a scholarship at Sherwood Music School, Chicago, gave an entire program at the school April 2. She is studying with Leo Podolsky and has been chosen to play the Grieg concerto with orchestra at the commencement exercises.

**Ariel E. V. Dunn**, B.A. '35 (Jan), of Portland, writes: "I finished two years of college in night school for the most part, so the diploma is arriving quite a few years late, but I'm proud to have one. Especially now that I am in educational

work where a diploma is considered important.

"I'm hard at work every day, trying to find jobs for young people fourteen to twenty years old, of which we have about two thousand in the 'open' file. As manager of the placement bureau I visit factories, offices, etc., to get jobs, contact clubs, write publicity, interview the jobless and supervise some class work.

"During vacations I travel. Last year drove seven thousand miles over ten western states; the year before went to the Chicago fair; the year before that to California. I have been as far east as Berlin, as far west as Honolulu and as far south as Columbia, South America, since I was on the campus.

"I will be glad to see any University of Oregon ex-students at the bureau at any time and will do what I can for them if they are looking for employment. The vocational committee of the Chamber of Commerce, the sole purpose of which is to help our bureau, is planning to sponsor a drive for jobs this spring, so we hope to have more work to offer."

**Freeman W. Allen**, ex-'35, is employed in the Pendleton branch of the United States National bank of Portland.

**Lois Howe** and **David McDonald** were married in Eugene on Easter Sunday. Mrs. Howe is a member of Alpha Delta Pi sorority on the campus and will be graduated from the University in June. Mr. McDonald is working for his Ph.D. degree at the University and is an assistant in the school of education.

A son, **Mack**, was born on February 28, to **Roberta Spicer Moffitt**, ex-'35 (Mrs. V. Hugh Moffitt) of 2163 South Washington Street, Eugene.

Miss **Elouise Gilmore** and **Charles A. Shea, Jr.**, ex-'35, were married in Portland, on March 2. They will reside at Cascade Locks.

**Elisabeth Lorraine McCandless**, ex-'36, and **Glenn Allen Bechtold**, ex-'35, were married, in Portland, on March 9. Mrs. Bechtold was a member of Alpha Phi and Mr. Bechtold of Kappa Sigma, at the University. The couple is to spend the next three months at their cottage at Watseco, near Rockaway.

**Jean Elizabeth Holden**, ex-'35, and **Lloyd H. Griggs** were married in Eugene, on March 14. Mr. and Mrs. Griggs will live at Comstock. Mrs. Griggs is a member of Kappa Kappa Gamma sorority and Mr. Griggs, an alumnus of Oregon State College, belongs to Lambda Chi Alpha fraternity.

### 1937

**Marian Elnor Davis**, '37, and **Arthur O. Richardson**, '38, were married in Eugene on Easter Sunday. Mrs. Richardson is a member of Alpha Chi Omega sorority on the campus and he of Alpha Tau Omega fraternity.

### Kennell-Ellis

ARTIST PHOTOGRAPHERS

Eugene—Salem—Klamath Falls—  
Medford—Seattle—Tacoma

### College Flower Shop

"Flowers of Unusual Distinction"

Phone 3018 829 E. 13th

Lester McDonald, '30 Willetta Hartley, '32

When WOMEN and CHILDREN  
Travel Alone—



HARRY E. HEATHMAN  
Manager

—they find the luxury, comfort and protection of home life, plus real economy, at either of the

## HEATHMAN HOTELS

Portland's newest and finest hotels...located in the hub of the shopping and recreational district...are the unquestioned choice of experienced travelers.

THE NEW  
HEATHMAN  
BROADWAY AT SALMON

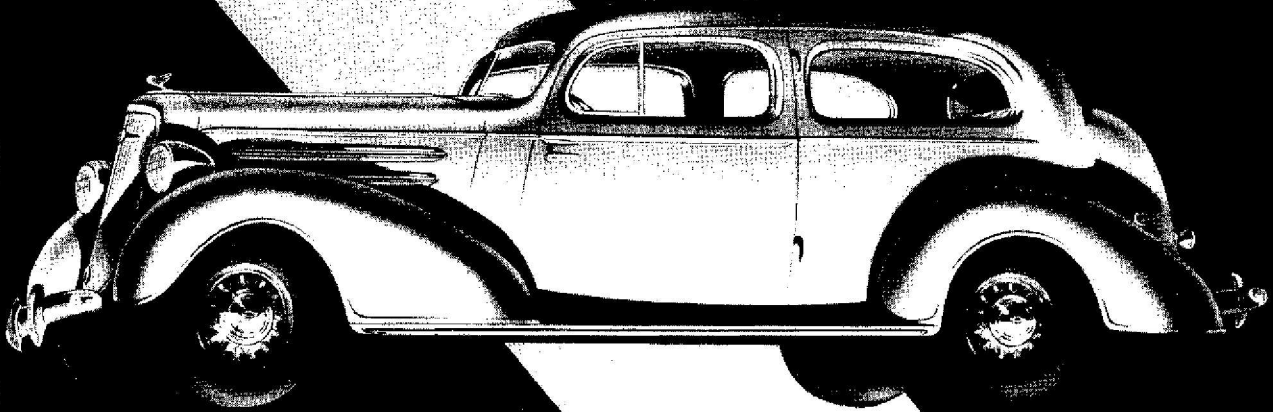


THE  
HEATHMAN  
PARK AT SALMON

PORTLAND  
OREGON

# Chevrolet

for 1935



*The Master De Luxe Town Sedan*

## **ITS OUTER BEAUTY REFLECTS ITS INNER QUALITY**

Chevrolet has given as much care to the manufacture of hidden parts as to the fashioning of the bodies of this aristocrat of low-priced cars. Careful selection of materials—precision engineering—and rigid inspections—assure sterling quality all the way through. When you buy a Master De Luxe Chevrolet, you may expect performance that equals its beauty . . . comfort and safety fully as advanced as its streamline styling. The prices are an added inducement to choose Chevrolet for quality at low cost.

**CHEVROLET MOTOR CO., DETROIT, MICH.**  
*Compare Chevrolet's low delivered prices and easy G. M. A. C. terms. A General Motors Value.*

PUBLIC LIBRARY

EUGENE, ORE.

READING ROOM

*It always has stopped raining*



*Life begins at sixty*

*It Satisfies*