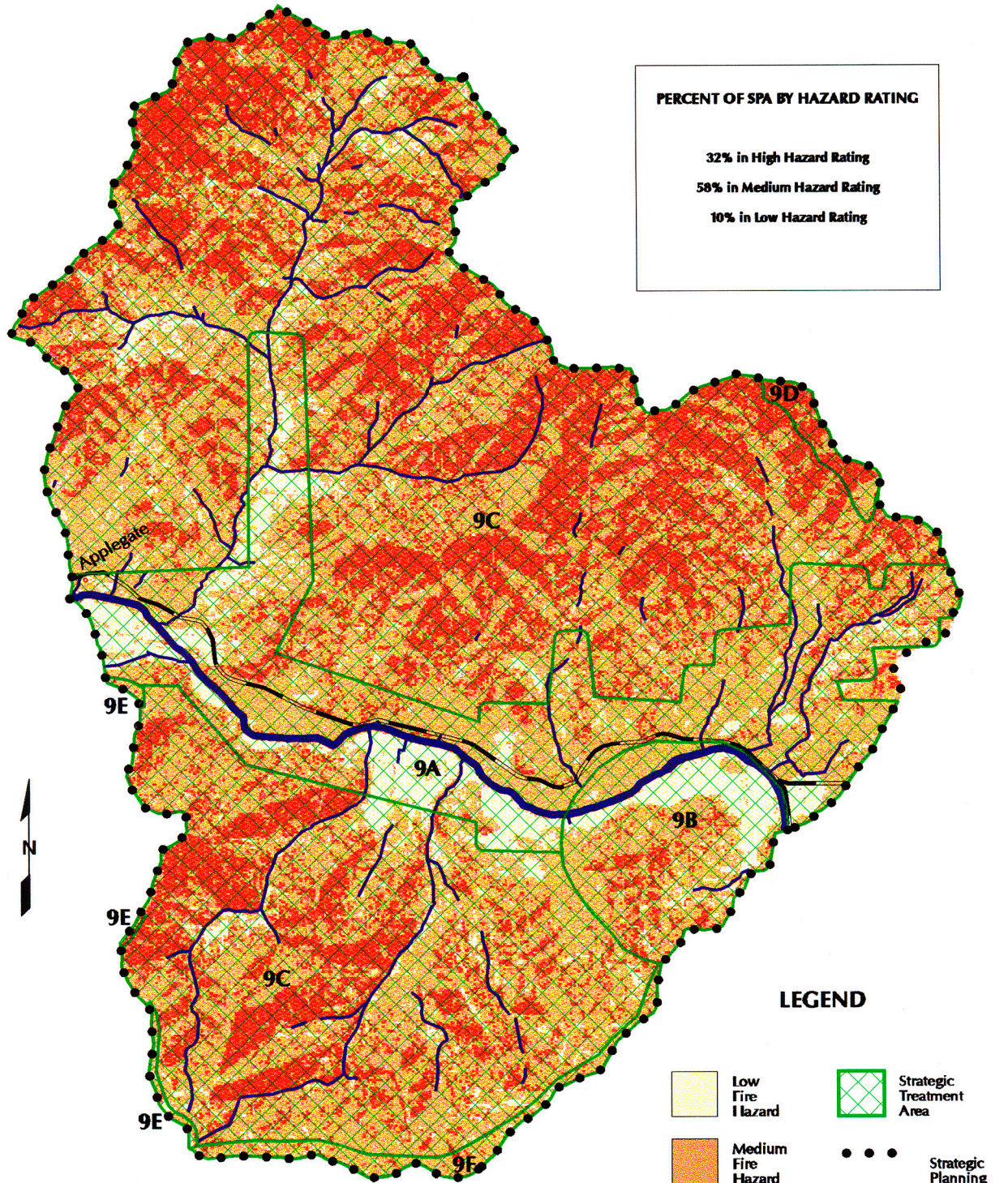




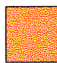

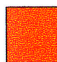



Fire Hazard Ratings and Strategic Treatment Areas Humbug SPA (9)



PERCENT OF SPA BY HAZARD RATING

32% in High Hazard Rating
58% in Medium Hazard Rating
10% in Low Hazard Rating

LEGEND

- | | |
|--|--|
|  Low Fire Hazard |  Strategic Treatment Area |
|  Medium Fire Hazard |  Strategic Planning Area Boundary |
|  High Fire Hazard |  Major Road |
| |  Major Stream |
| |  Applegate River |

**HUMBUG CREEK
STRATEGIC PLANNING AREA #9**

Recommendations for Fuel Reduction Work

9. Humbug Creek

- a. CARs are very high risk. Recommendation: Do fuel reduction work around homes and on private property, checking road access & driveways.
- b. Cantrall Buckley park side of river, Lomas and Dunlap area.
Recommendation: Do fuel reduction work on private and park lands.
- c. Recommendation: Complete fuel reduction portions of BLM's Ferris Bugman and Keeler Crick projects; include private land owner collaboration with BLM for fuels treatments.
- d. Recommendation: Continue the fuel break between Humbug and Forest Creeks.
- e. Recommendation: Construct a fuel break along the ridge between Thompson Creek, east to the Chapman/Keeler area.
- f. Recommendation: Continue the fuel break between the Star SPA and the Chapman/Keeler area.

**< #1 PRIORITY FOR ALL SPAs WITH CARs:
TO DO WORK AROUND HOMES >**

GLOSSARY:

SPA: Strategic Planning Area

CAR: Communities-at-Risk

LSR: Late Seral Reserve

T & E: Threatened & Endangered (species)

WUI: Wildland-Urban Interface