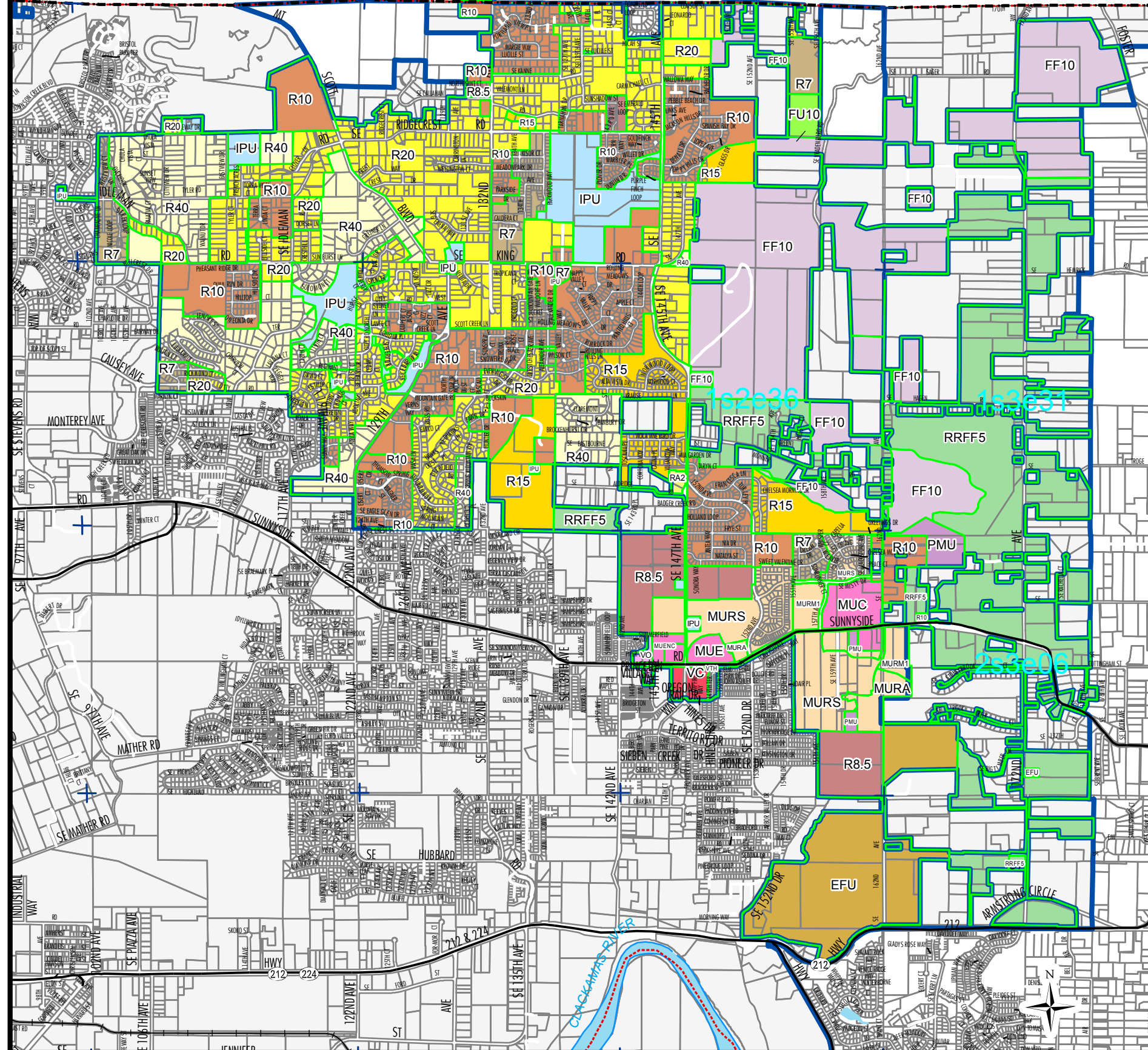
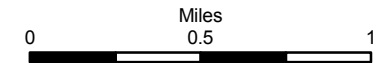


City of Happy Valley Landuse Zoning



- R-7 (1 Unit / 7,000 Sq. Ft.)
- R-8.5 (1 Unit / 8,500 Sq. Ft.)
- R-10 (1 Unit / 10,000 Sq. Ft.)
- R-15 (1 Unit / 15,000)
- R-20 (1 Unit / 20,000 Sq. Ft.)
- R-40 (1 Unit / 40,000 Sq. Ft.)
- Rural Residential Farm Forest – RRF5 (5 acres)
- Farm & Forest – 10 acres (FF10)
- Future Urban – 10 acres (FU10)
- Mixed Use Residential – Single Family (MUR-S)
- Mixed Use Residential – Attached (MUR-A)
- Mixed Use Residential – Multi-Family Low Density (MUR-M1)
- Mixed Use Residential – Multi-Family Medium Density (MUR-M2)
- Mixed Use Residential – Multi-Family High Density (MUR-M3)
- Mixed Use Residential – Mixed Buildings (MUR-X)
- Exclusive Farm Use
- Institutional and Public Use – IPU (Overlay Zone)
- Planned Mixed Use (PMU)
- Sunnyside Village: Townhouse (VTH)
- Sunnyside Village: Office (VO)
- Sunnyside Village: Commerical (VC)
- Mixed Use Commercial (MUC)
- Mixed Use Employment (MUE)
- Mixed Use Employment – Neighborhood Commercial Subdistrict (MUE-NC)
- County Zoning
- R-2.5 (1 Unit / Per 2500 Sq. Ft)
- Office Commerical (OC)
- Medium High Density Residential District (MR-2)
- High Density Residential (HDR)
- Zone Boundaries
- City Limits
- Tax Lot Parcels

1:28,000



Sources:
 Geographic data from Clackamas County (2005)
 Urban Growth Boundary set by Metro, 2002
 Map Printed: August 2005

