

LANDSCAPE RESOURCE SURVEY
 University of Oregon Campus Heritage Landscape Plan
 Eugene, Lane County, Oregon • Spring 2007

■ RESOURCE IDENTIFICATION & SUMMARY

LANDSCAPE AREA NAME

Gerlinger Entrance Green (w)

HISTORIC NAME(S)

none known

CAMPUS PLAN DESIGNATION

Green

CURRENT HISTORIC DESIGNATION

National Register Listing
 name: Women's Memorial Quad

ERA(S) OF GREATEST SIGNIFICANCE

Lawrence/Cuthbert Era

LEVEL OF HISTORIC SIGNIFICANCE

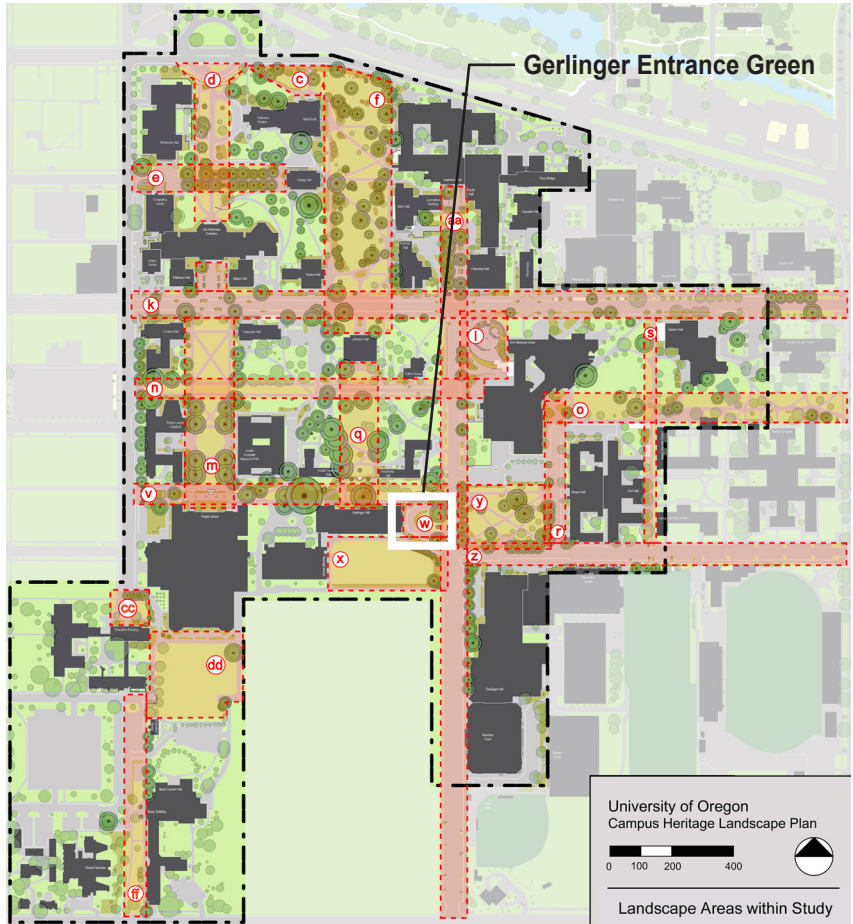
High

LEVEL OF INTEGRITY

Excellent

RANKING

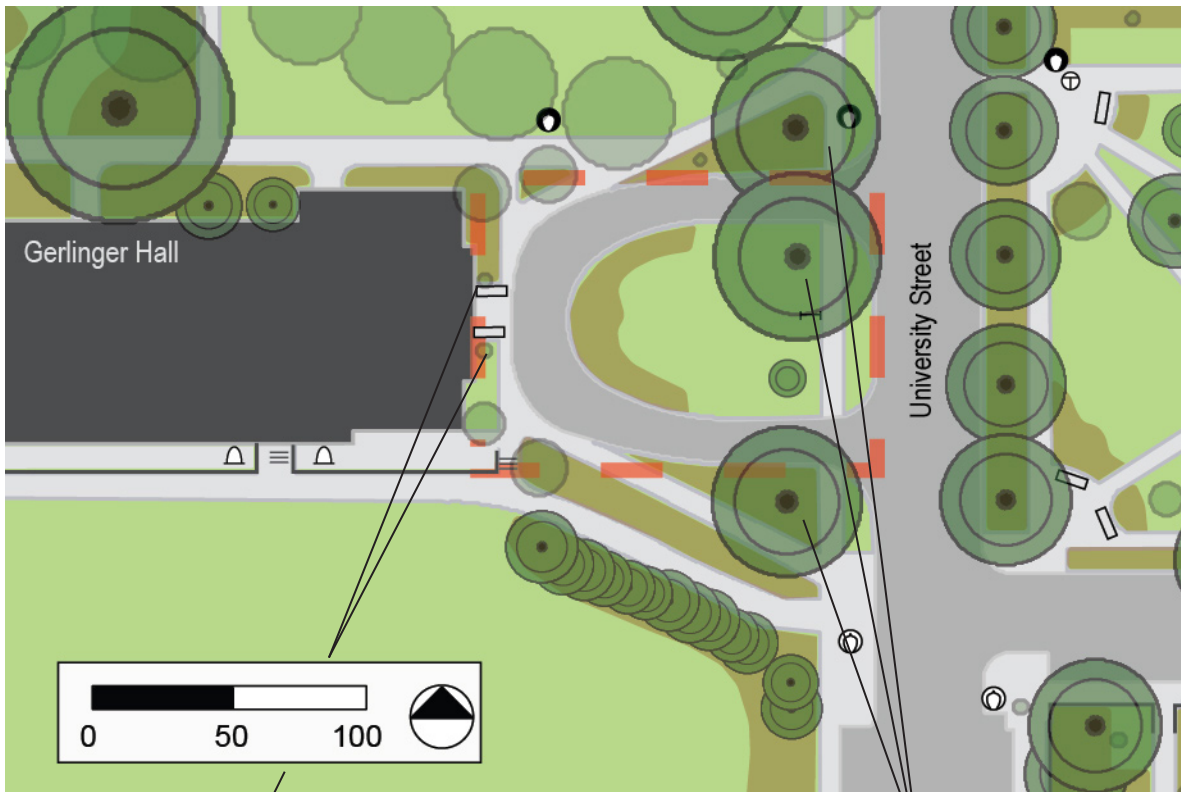
Primary



View looking west at Gerlinger Hall.

Landscape Resource Survey
GERLINGER ENTRANCE GREEN

LANDSCAPE AREA SITE MAP — Highlighting existing elements from the period of significance (1876-1974).



Two Irish yew trees at the entrance to Gerlinger Hall may have been planted during the Lawrence/Cuthbert Era

Four Red maples were planted in front of Gerlinger Hall along University Street during the Lawrence/Cuthbert Era, three of which remains.

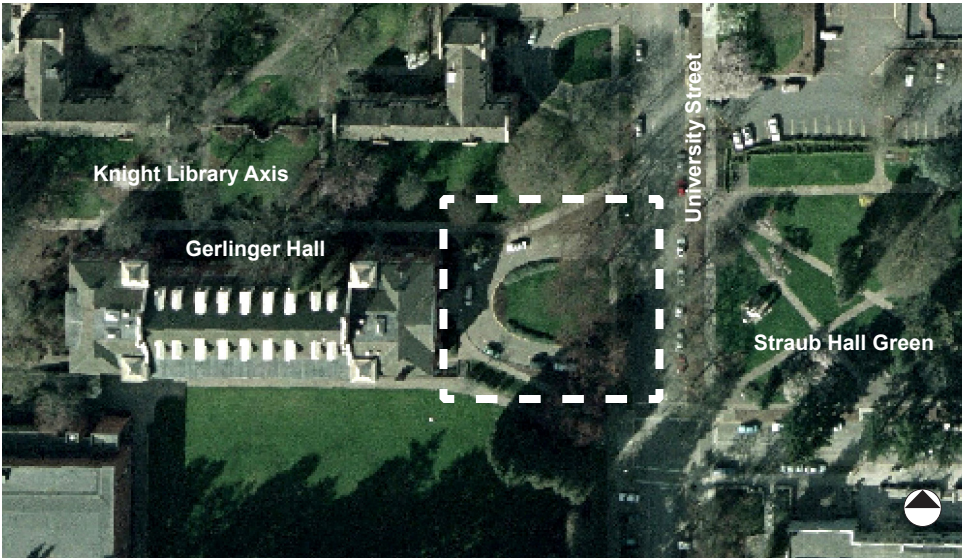
LEGEND			
TRASH CANS	⊕	BIKE RACKS	⌒
NEWS STANDS	Ⓜ	TREES FROM PERIOD OF SIGNIFICANCE	● (dark green)
SMALL SCALE FEATURES FROM PERIOD OF SIGNIFICANCE	▲	MEMORIAL TREES AFTER PERIOD OF SIGNIFICANCE	● (medium green)
SMALL SCALE FEATURES AFTER PERIOD OF SIGNIFICANCE	△	CAMPUS TREES AFTER PERIOD OF SIGNIFICANCE	● (light green)
PLAQUES AND MEMORIALS FROM PERIOD OF SIGNIFICANCE	● (black)	UNIVERSITY STANDARD LIGHTPOSTS	⦿
PLAQUES AND MEMORIALS AFTER PERIOD OF SIGNIFICANCE	○	NON-UNIVERSITY STANDARD LIGHTPOSTS	⦿ (white)
BENCHES FROM PERIOD OF SIGNIFICANCE	▬ (thick)	LANDSCAPE AREA BOUNDARY	⋯ (red dashed)
BENCHES AFTER PERIOD OF SIGNIFICANCE	▬ (thin)		
MEMORIAL BENCHES AFTER PERIOD OF SIGNIFICANCE	▬ (dashed)		

* note: Period of Significance refers to the project period of 1876-1974

SUMMARY OF EXISTING HISTORIC FEATURES

Since the construction of Gerlinger Hall in 1921, the Gerlinger Entrance Green has acted as its formal entry space. The horseshoe-shaped entry drive, the mowed lawn in between and the Red maples planted along University Street are the

most significant historic features within the Green. The chain and bollards along with the plantings on the lawn are not historic. The Irish yew trees on either side of Gerlinger’s entrance are historic, appearing in photos as early as 1925.



2004 aerial of the Gerlinger Entrance Green



Northwest view across the Green and towards Hendricks Hall.



View west from University Street towards Gerlinger Hall.

■ **RESOURCE HISTORY**

ERA(S) OF GREATEST SIGNIFICANCE

Designated Eras within the Period of Historic Significance Determined for this Survey (1876-1967) are listed below. Check the era/eras determined to be of highest significance for this landscape area.

- Inception Era (1876-1913)
- Lawrence/Cuthbert Era (1914-1946)
- Mid-Century Era (1947-1974)

DATE(S) OF CONSTRUCTION DURING ERA(S) OF SIGNIFICANCE

- 1918: Hendricks Hall is constructed.
- 1919: Gerlinger Hall is construction begins.
- 1921: Gerlinger Hall is completed, along with the Entrance Green.
- 1921: The Women's Open Air Gymnasium is constructed.
- 1921: Gerlinger Field Green is constructed.

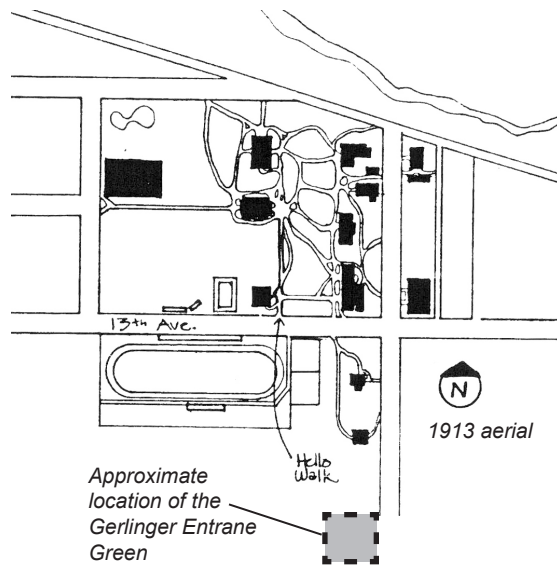
MAJOR ALTERATIONS OCCURRING AFTER ERA(S) OF SIGNIFICANCE

- 1950: Trees planted along southern edge of Green.
- 1969: Gerlinger Annex is constructed.
- 1995: A crescent shaped planting bed and a chain and bollard fence is added to the lawn, along with a pair of cast stone benches placed at the entrance to Gerlinger Hall.
- 2005: a young Sugar maple memorial tree was planted to replace one of the Red maples in the Green.

ERA DESCRIPTION:

The Inception Era (1876-1913)

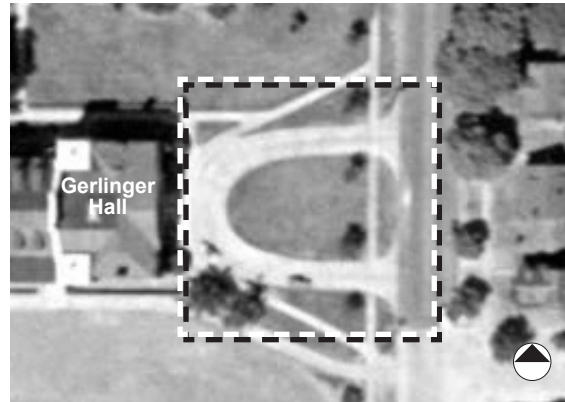
The Gerlinger Entrance Green was originally an empty field owned by the university, and bordered by the I.O.O.F. Cemetery to the south and an empty field to the north. Mary Spiller Hall and the Collier house were nearby. To the east across University Street was an open field under recent ownership by the university. This area still had a fairly rural character and would have been considered to be the edge of town.



ERA DESCRIPTION:

The Lawrence/Cuthbert Era (1914-1946)

A horseshoe-shaped entry drive connected Gerlinger Hall's east facade to University Street. The area within was open lawn. Four young Red maples were planted in a row along the University Street sidewalk. During this era the wooden ramp that connected Gerlinger Field to the University Street sidewalk was replaced with concrete.

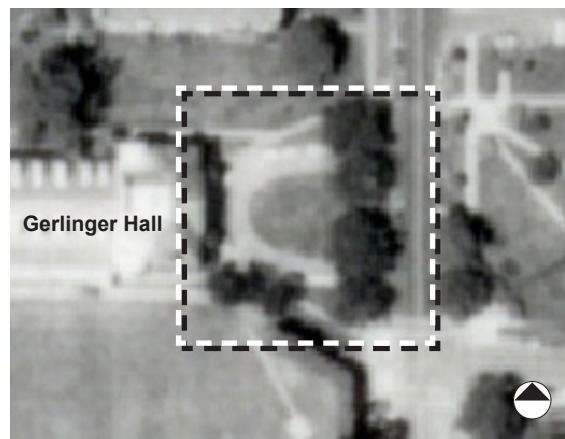


1944 aerial

ERA DESCRIPTION:

The Mid-Century Era (1947-1974)

Very little changed within the Green from the Lawrence/Cuthbert to the Mid-Century Era, except a row of trees was planted along the southern edge. Most changes occurred across University Street when Straub Hall Green replaced the residential block circa 1950, about the same time as the Erb Memorial Union was constructed.



1968 aerial



1951 aerial

■ **DESCRIPTION OF LANDSCAPE CHARACTERISTICS**

LAND USE

Describing both the historic and current use of the Area.

Gerlinger Entrance Green serves as a forecourt to Gerlinger Hall. The vehicle turnaround provides drop-off and parking. No active or passive recreation occurs within the Green.

DESIGN INTENT

Describing the overall design intent of the Area.

The original design intention of the Green is to provide a fairly simple and aesthetically pleasing landscape space in front of iconic Gerlinger Hall. It also allows for vehicular access near the building entry.

SPATIAL ORGANIZATION

Describing the arrangement of physical elements that create a three-dimensional sense of space.

The Green is formed by the mature trees to the north and south, the maples along University Street, and Gerlinger Hall itself. The interior of the Green contains little or no vegetation that would obscure the view to the Hall.

TOPOGRAPHY & SITE ORIENTATION

Describe/document gradient, slope orientation and solar access.

The Gerlinger Green is on a plane that slopes uniformly to the northeast (see diagram below). It has unobstructed southern exposure and high solar access.

VEGETATION

Describing tree, plant, shrub, ground layer groupings and arrangements.

Three large red maples, a cork oak, and two large Irish yews are the significant trees within the Green. A crescent shaped planting bed along the perimeter of the green contains ornamental grasses and viburnum, and are non-historic plantings.

NATURAL SYSTEMS AND FEATURES

Describing natural processes, water flow, and habitat, if applicable.

There is little habitat value within the Gerlinger Green due to its lawn and non-native trees.

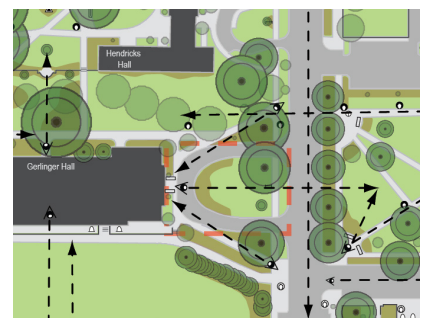
Some of the water that falls into the largely pervious interior of the green percolates into the soil, with excess water flowing towards University Street and into a storm drain.



The area's topography.



Diagram showing circulation paths.



Significant views through the area.

BUILDINGS/STRUCTURES

Describing built physical elements in and around perimeter of the Area, and their relationship to the landscape.

Gerlinger Hall (1921) is the only building adjacent to the Green. No significant changes have altered the outward appearance of the Hall.

SMALL-SCALE ELEMENTS

Describing elements such as monuments, markers, seating, fences etc.

There are only a few small scale features within the Green, and none of them are historic. These features include a bollard and chain fence, benches, two plaques and a sign.

EDGE CONDITIONS AND ADJACENCIES

Describing the perimeter of the site and important adjacent connections to spaces beyond.

The strongest physical connection to the Gerlinger Green is with Gerlinger Hall. The Green connects to Knight Library Axis, Gerlinger Field Green, University Street Axis, and is within viewing distance of Straub Hall Green.

CIRCULATION

Describing movement paths and associated materials for: pedestrian; automobile; bicycle; other (e.g. system, alignment, materials, character).

The University Street sidewalk along the east edge of the Green is an important north-south connector on campus (see diagram, pg.6). The Knight Library Axis provides an east-west pedestrian corridor. There is no circulation across the interior of the turnaround area, effectively discouraged by a knee-high chain link fence along the western edge.

VIEWS/VISTAS

Describing focal points and views to and from the Area.

Gerlinger Hall's eastern façade is a well-known view on campus (see diagram, pg.6). There is also a strong view corridor to Straub Hall Green.

■ **DETERMINATION OF SIGNIFICANCE**

CURRENT HISTORIC DESIGNATION

- City Landmark
- National Register - full listing
name: Women's Memorial Quad
- National Register - partial listing
name:
- National Historic Landmark
- No historic designation

NATIONAL REGISTER CRITERIA

Criterion A: Significant Events

Describe events with the landscape area that have influenced the broad patterns of campus history.

Gerlinger Entrance Green meets Criterion A for its association with the movement to recognize women's history and role in Oregon. The Green has a strong association with Gerlinger Hall, which was part of the first complex of buildings constructed specifically for women on campus.

Criterion B: Significant People

Describe connections with the lives of significant persons, including designers.

Not Applicable.

Criterion C: Distinctive Characteristics

Describe elements that embody the distinctive characteristics of a type, period, or method of construction, or that represent the work of a master, or that possess high artistic values.

Gerlinger Entrance Green meets Criterion C for its association with Ellis Lawrence's campus plan. He designed a series of buildings intended just for female students. One of these was Gerlinger Hall, of which the Green is its main entrance. Additionally, Irene H. Gerlinger, first woman member of the University of Oregon Board of Regents, ran the fundraising campaign and was involved in the design of the Women's Quadrangle Ensemble. Unique features of the Green include the horseshoe-shaped entry drive to Gerlinger Hall.

LEVEL OF SIGNIFICANCE

Rank the landscape area in term of its level of contribution to the historic significance of the university campus as a whole.

- High Significance
Considerable contribution to the history of the campus and its growth.
- Medium Significance
Noteworthy contribution the history of the campus and its growth.
- Low Significance
Discernable contribution to the history of the campus and its growth.
- Very Low/No Significance
No discernable importance to the history of the campus and its growth.

■ **DETERMINATION OF INTEGRITY**

Integrity of the Landscape Area is evaluated based on the retention of the historic characteristics described in the categories below.

LOCATION / SETTING

Are important elements still in their original location and configuration?

Gerlinger Entrance Green is much the same today as it was at the end of the Lawrence/Cuthbert Era. Neither the alignment of the vehicle turnaround nor the vegetated composition of the landscape have changed dramatically since the era of significance.

DESIGN

How has the general structure of the landscape changed since its period of significance?

The Green still serves as a formal entry to Gerlinger Hall, and provides vehicular access.

MATERIALS

Are original materials/vegetation that were used to structure and shape the landscape still present?

The majority of the landscape is mowed lawn, and in keeping with its historic design. The large maples within and adjacent to the Green date back to the era of significance.

WORKMANSHIP

Does the landscape retain characteristic workmanship from the period of significance?

The historic façade of Gerlinger Hall, one of Ellis Lawrence’s most significant buildings, remains intact.

FEELING

Does the landscape evoke the period of significance?

The Green still evokes its era of significance.

ASSOCIATION

Is it possible to associate elements of the landscape with significant people/events?

Gerlinger Green is closely associated with Gerlinger Hall, one of Ellis Lawrence’s most important campus buildings.

■ **INTEGRITY & CONDITION FINDINGS**

HISTORIC INTEGRITY

Determine the level of historic integrity, based on the Era(s) of Significance – check one

- Excellent Integrity**
Retains a very high percentage of original fabric, and the original design intent is apparent.
- Good Integrity**
Retains a significant percentage of original fabric, with a discernable design intent.
- Fair Integrity**
Original fabric is present, but diminished.
- Poor Integrity**
Contains little historic fabric, and the original design intent is difficult to discern.

OVERALL CONDITION OF LANDSCAPE AREA

– check one

- Excellent**
- Good**
- Fair**
- Poor**

■ RESOURCES

— List all primary sources used (plans, maps, surveys, photographs, drawings, newspapers, periodicals, and autobiographies) and secondary sources (books, theses, guidebooks).

Dunton, F.E. and Schwan W.J., A Biological Map of the University of Oregon Campus: Showing the Specimen Trees on the Campus. July 1913. duplicate held by the University of Oregon Planning Office.

Eaton, Allen H. ed. The '02 Webfoot (Eugene: University of Oregon, 1901) 1-168.

Hendricks, Leland G. ed. The Oregana volume V (Eugene: the class of 1914, 1914).

Long, Stephen W. "Historic Continuity A Diagnosis Report" (Eugene: University of Oregon Office of Planning and Campus Development, 1980) 1-67.

Lowrie, Chris, "University acquires 13th Avenue." Eugene, Oregon Daily Emerald, 26 January, 1971.

Marshall Brothers, 1921 map of Campus, duplicate held by the University of Oregon Planning Office.

McMillan, Adell, A Common Ground. (Eugene, Oregon: Erb Memorial Union, 2003) 1-637.

The Oregana (Eugene: the class of 1945, 1945).

Rice, Donald B. ed. The Oregana volume V (Eugene: the class of 1914, 1914).

Sandahl, David A. and Castro, Ricardo. "An architectural history of the University of Oregon," (unpublished manuscript, University of Oregon, 1975) Architecture and Allied Arts Library.

Shellenbarger, Michael. ed. Harmony in Diversity: The Architecture and Teaching of Ellis F. Lawrence (Eugene: University of Oregon, 1989), 1-91.

Teague, EH. (2004, Oct. 10). The Architecture of the University of Oregon. Retrieved Mar. 1, 2006, from <http://libweb.uoregon.edu/guides/architecture/oregon/>

University of Oregon, 1935 map of Campus, duplicate held by the University of Oregon Planning Office.

University of Oregon, 1953 map of Campus, duplicate held by the University of Oregon Planning Office.

University of Oregon Catalogue: 1913-1914. (Eugene, Oregon: University of Oregon, 1914) 1-276.

University of Oregon Catalogue: 1945-1946. Campus Map (Eugene, Oregon: University of Oregon, 1945)

University of Oregon Catalogue: 1955-1956. Campus Map (Eugene, Oregon: University of Oregon, 1955)

University of Oregon Map Library, Aerial Photo Collection. Aerial photograph of the University of Oregon, 1936.

University of Oregon Map Library, Aerial Photo Collection. Aerial photograph of the University of Oregon, 1944.

University of Oregon Map Library, Aerial Photo Collection. Aerial photograph of the University of Oregon, 1947.

University of Oregon Map Library, Aerial Photo Collection. Aerial photograph of the University of Oregon, 1952.

University of Oregon Map Library, Aerial Photo Collection. Aerial photograph of the University of Oregon, 1960.

University of Oregon Map Library, Aerial Photo Collection. Aerial photograph of the University of Oregon, 1968.

Electronic version available on the University of Oregon Planning Office web page: <http://uplan.uoregon.edu/projects/HLP/hlpsurveyoflandareas.htm>

Survey research by Dustin Welch and Daniel Schaible.

Survey form completed in Spring 2006 under the supervision of Fletcher Farr Ayotte, Inc.

Edited by the University of Oregon Planning Office, Spring 2007.