

LANDSCAPE RESOURCE SURVEY
 University of Oregon Campus Heritage Landscape Plan
 Eugene, Lane County, Oregon • Spring 2007

■ **RESOURCE IDENTIFICATION & SUMMARY**

LANDSCAPE AREA NAME

Pioneer Axis (q)

HISTORIC NAME(S)

Women's Quad

CAMPUS PLAN DESIGNATION

Axis

CURRENT HISTORIC DESIGNATION

National Register - partial listing
 name: Women's Mem. Quad

ERA(S) OF GREATEST SIGNIFICANCE

Lawrence/Cuthbert Era

LEVEL OF HISTORIC SIGNIFICANCE

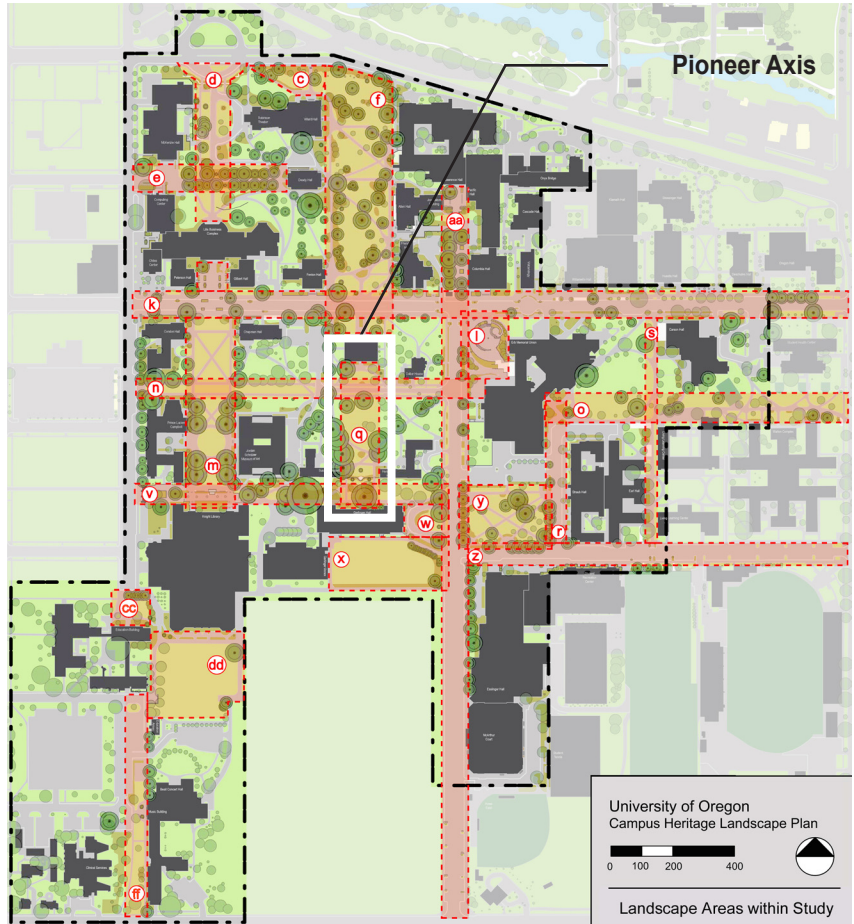
High

LEVEL OF INTEGRITY

Excellent

RANKING

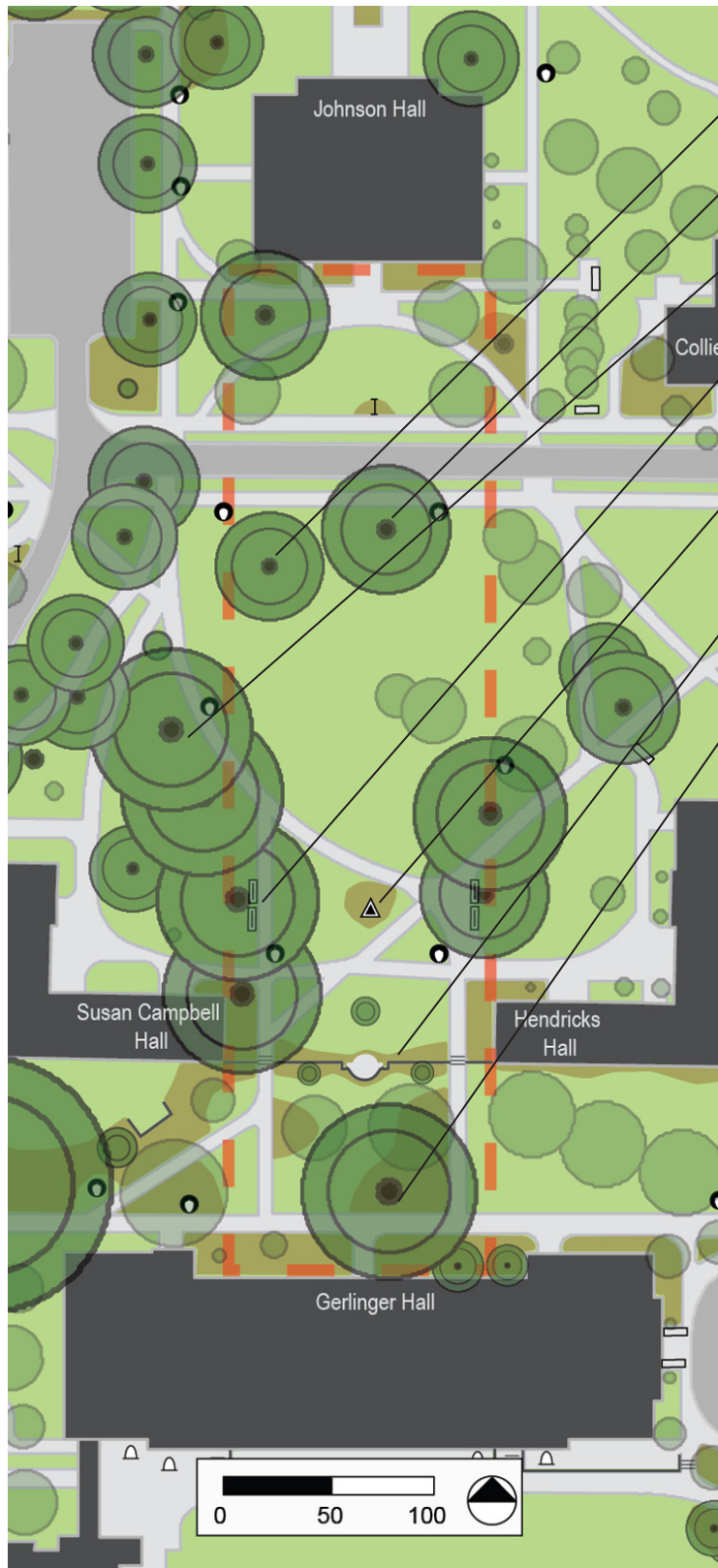
Primary



Panoramic view looking directly towards Gerlinger Hall, with the Pioneer Mother statue at center.



LANDSCAPE AREA SITE MAP — Highlighting existing elements from the period of significance (1876-1974).



- Giant sequoia from the era of significance
- Black walnut tree from the era of significance
- Oaks planted during the Lawrence/Cuthbert Era help reinforce the Axis
- Cast stone benches appear in early photos of the Women's Quad during the 1920s
- The Pioneer Mother statue located here in 1930
- Brick and cast stone terrace wall built in the 1920s
- Walnut tree predating the 1930s

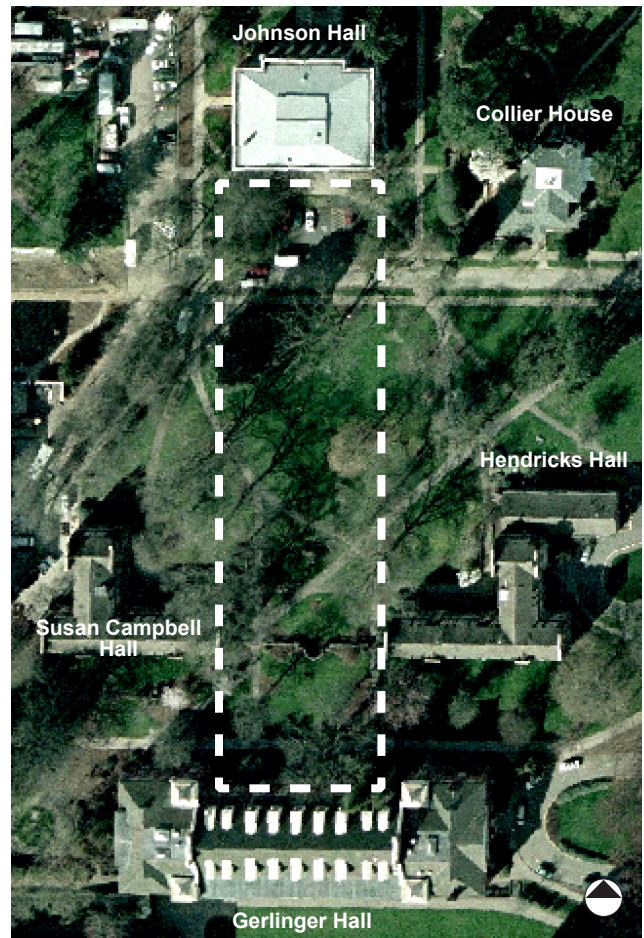
LEGEND	
BIKE RACKS	⏏
TRASH CANS	⊕
NEWS STANDS	Ⓝ
SMALL SCALE FEATURES FROM PERIOD OF SIGNIFICANCE	▲
SMALL SCALE FEATURES AFTER PERIOD OF SIGNIFICANCE	△
PLAQUES AND MEMORIALS FROM PERIOD OF SIGNIFICANCE	●
PLAQUES AND MEMORIALS AFTER PERIOD OF SIGNIFICANCE	○
BENCHES FROM PERIOD OF SIGNIFICANCE	≡
BENCHES AFTER PERIOD OF SIGNIFICANCE	▬
MEMORIAL BENCHES AFTER PERIOD OF SIGNIFICANCE	▬
TREES FROM PERIOD OF SIGNIFICANCE	●
MEMORIAL TREES AFTER PERIOD OF SIGNIFICANCE	●
CAMPUS TREES AFTER PERIOD OF SIGNIFICANCE	●
UNIVERSITY STANDARD LIGHTPOSTS	⦿
NON-UNIVERSITY STANDARD LIGHTPOSTS	⦿
LANDSCAPE AREA BOUNDARY	⋯
* note: Period of Significance refers to the project period of 1876-1974	

SUMMARY OF EXISTING HISTORIC FEATURES

The Pioneer Axis is a rectangular area within a space that has historically been called the Women’s Quad. The landscape area contains the Pioneer Mother statue by Alexander Phimster Proctor, the same sculptor who created the Pioneer statue located in the Old Campus Quad. Six cast stone benches and a brick and cast stone terrace wall date back to the Lawrence/Cuthbert Era. The vegetation of the area has matured since the end of the Mid-Century Era and contains many large oaks that are remnants of Fred Cuthbert’s original planting plan.

Although Ellis Lawrence’s building plan for the Quad was never fully realized, the Pioneer Axis today retains much of the symmetry and open views as originally intended, and serves as an important campus open space. The grouping of Susan Campbell, Hendricks and Gerlinger Halls is one of the best examples of the Lawrence legacy on campus. Additional trees planted after the period of significance appear to be arranged in a manner that is inconsistent with Cuthbert’s planting plan.

A designed view has been maintained within the Pioneer Axis, starting at the Pioneer Mother and extending through the glazed doors of Johnson Hall across to the Pioneer statue.



2004 aerial of the Pioneer Axis



The Pioneer Mother statue, sited here in 1930.



Looking southeast across the Pioneer Axis, towards Hendricks Hall (left) and Gerlinger Hall (center).

PIONEER AXIS

RESOURCE HISTORY

ERA(S) OF GREATEST SIGNIFICANCE

Designated Eras within the Period of Historic Significance Determined for this Survey (1876-1974) are listed below. Check the era/eras determined to be of highest significance for this landscape area.

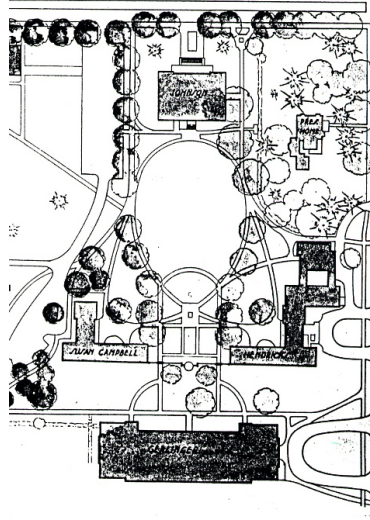
- Inception Era (1876-1913)
- Lawrence/Cuthbert Era (1914-1946)
- Mid-Century Era (1947-1974)

DATE(S) OF CONSTRUCTION DURING ERA(S) OF SIGNIFICANCE

- 1914: Construction begins on Johnson Hall.
- 1918: Hendricks Hall is completed.
- 1921: Gerlinger and Susan Campbell Halls are completed. The terrace wall between Hendricks and Susan Campbell Halls was built between 1918 and 1921.
- 1932: Pioneer Mother statue placed within the Woman's Quadrangle.

MAJOR ALTERATIONS OCCURRING AFTER ERA(S) OF SIGNIFICANCE

- 1951: Mary Spiller Hall razed.
- 1962: Columbus Day Storm.

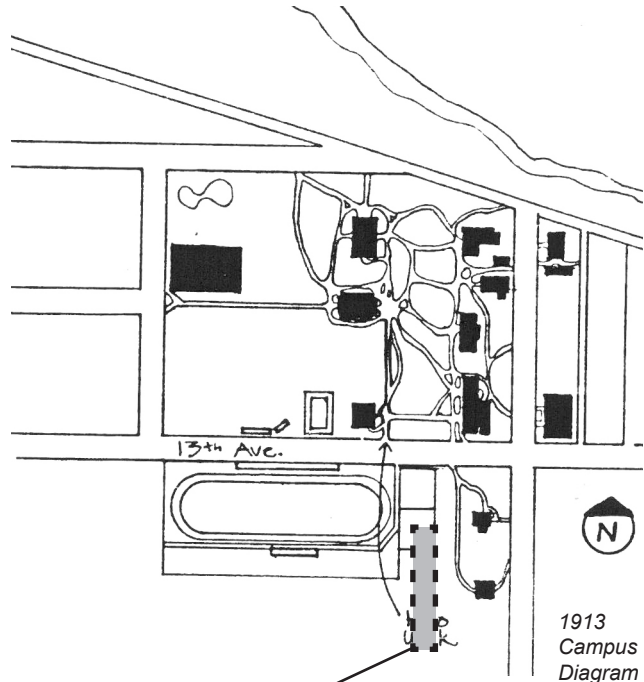


Cuthbert's 1939 plan for the Women's Quad.

ERA DESCRIPTION:

The Inception Era (1876-1913)

The 1913 campus map (right) shows the Pioneer Axis site being bounded by Kincaid Field to the west, and the Collier House and Mary Spiller Hall to the east. The construction of Johnson Hall was soon to begin, and would eventually form the northern boundary. A 1912 Sanborn Map shows the university's ownership of a long lot that extended from 13th Avenue to the I.O.O.F. cemetery. During this era, the northwest portion of the Axis bordered Kincaid Field and contained several tennis courts. Women students living in the adjacent Mary Spiller Hall used the open space for both passive and active recreation.



Approximate location of Pioneer Axis

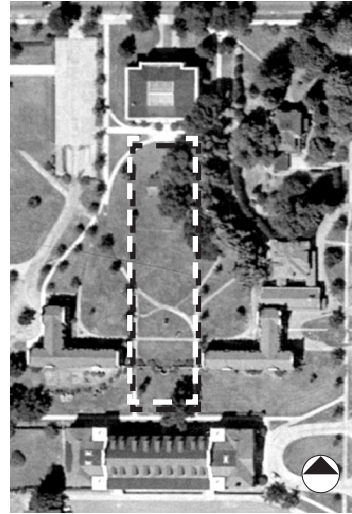
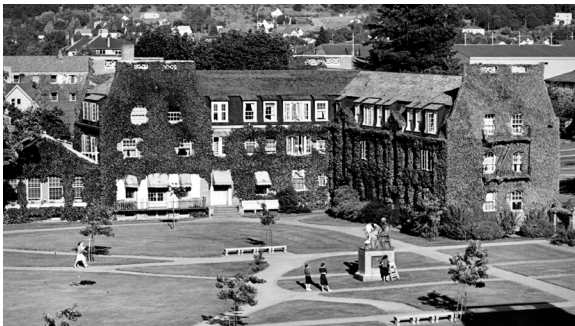
1913 Campus Diagram

Photograph taken shortly after the completion of Johnson Hall, showing women playing tennis in what would later be known as the Women's Quad. Johnson Hall is just visible on the left and Mary Spiller Hall is in the background.

ERA DESCRIPTION:

The Lawrence/Cuthbert Era (1914-1946)

The Pioneer Mother statue was sited here in 1930. By 1944 (see aerial at right) oaks had been planted along the curving main walks of the Quad. The trees around Mary Spiller Hall were quite mature and larger than the new plantings designed by Fred Cuthbert. The eastern half of the Axis was contained by these mature plantings, while the western half would have seemed comparatively open. The curved row of mature trees that connects Johnson Hall to Mary Spiller Hall is reflected in the same gesture of young trees and curving paths on the western half of the Axis.



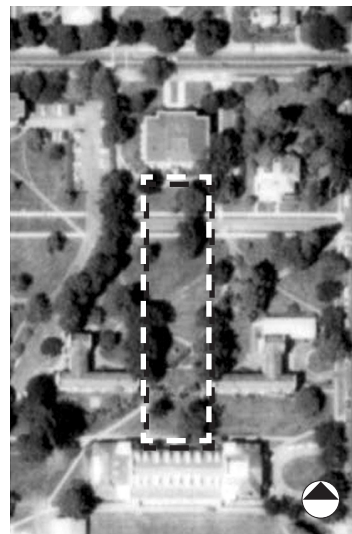
1944 aerial

A ca. 1940 photograph of Hendricks Hall shows the openness of the Women's Quad before the newly planted oaks defined the space. The Pioneer Mother statue is in the foreground.

ERA DESCRIPTION:

The Mid-Century Era (1947-1974)

The 1968 aerial photo shows the removal of Mary Spiller Hall (1951) and the relocation of the Gift Campaign Building. The Columbus Day Storm of 1962 has blown down many of the older trees that were associated with Mary Spiller Hall. Certain paths of the Quad were slightly reconfigured but still retained a sense of their previous symmetry. With the completion of the Johnson Lane Axis and the Erb Memorial Union, circulation was increased and vehicles were accommodated within Johnson Lane.



1968 aerial

A circa 1952 photograph, taken just after the removal of Mary Spiller Hall, the last major architectural alteration to the Women's Quad.

■ **DESCRIPTION OF LANDSCAPE CHARACTERISTICS**

LAND USE

Describing both the historic and current use of the Area.

The Pioneer Axis today is used for informal and quiet recreation, along with occasional formal gatherings. During the Inception Era, women students living in the adjacent Mary Spiller Hall used the open space for both passive and active recreation, taking advantage of the tennis courts. In the Lawrence/Cuthbert Era, the addition of two women’s dormitories (Hendricks and Susan Campbell Halls) and a women’s physical education building (Gerlinger Hall) resulted in a formal “Women’s Quadrangle”. This area held symbolic meaning to the women of campus, who annually placed flowers around the Pioneer Mother in the Flower and Fern Procession that continued into the Mid-Century Era.

DESIGN INTENT

Describing the overall design intent of the Area.

The Pioneer Axis was part of a formal quadrangle intended by Ellis Lawrence to be the center of female student activities on campus. Lawrence worked in concert with landscape architect F.A. Cuthbert to develop the layout and planting plan for the Quad. The bilateral symmetry of the ensuing design has diminished over time. In 1930 the Pioneer Mother was placed within the Quad and became an important focal point. Additional

women’s dormitories similar to Hendricks and Susan Campbell Halls were planned for the Quad, but were never constructed.

SPATIAL ORGANIZATION

Describing the arrangement of physical elements that create a three-dimensional sense of space.

The Pioneer Axis is spatially defined by the Women’s Quad, through which it passes. The buildings that surround the Quad provide a sense of enclosure and privacy, and augmented by the full tree canopy.

TOPOGRAPHY & SITE ORIENTATION

Describe/document gradient, slope orientation and solar access.

The Axis is situated on a gentle, uniform slope that dips down to the northern edge of the site (see diagram below). Along the center of the Axis there are noticeably fewer trees than at the periphery. Although the large canopy trees within the Axis keeps much of this space in heavy shade, the center of the Axis does allow for some solar access during midday.

VEGETATION

Describing tree, plant, shrub, ground layer groupings and arrangements.

Many large oaks distinguish this space, with several of the largest oaks arranged in rows that

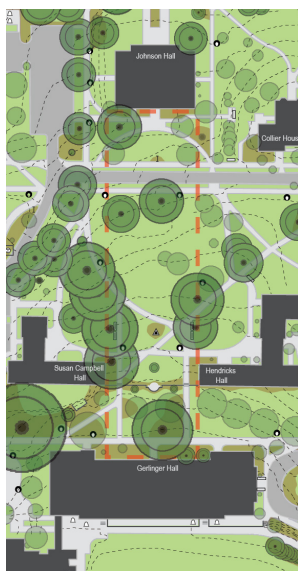


Diagram showing the topography of the area.



Diagram showing circulation paths.



Significant views through the area.

begin to form the eastern and western edge of the Axis. A large sequoia and three large black walnuts date back to the era of significance. The canopy cover from the large shade trees is nearly continuous along the east and west edge, from Gerlinger Hall to Johnson Hall. The large lawn is broken by a road, paths and the brick terrace wall between Susan Campbell Hall and Hendricks Hall. Shrub beds occur along this terrace, at the base of the Pioneer Mother statue, and along the buildings foundations. Typical shrubs include rhododendrons, deciduous azaleas and Oregon grape.

NATURAL SYSTEMS AND FEATURES

Describing natural processes, water flow, and habitat, if applicable.

The large trees within the Quad are part of a recognized wildlife corridor that connects the Pioneer Cemetery to the Millrace. There are two designated wildlife trees within this space.

BUILDINGS/STRUCTURES

Describing built physical elements in and around perimeter of the Area, and their relationship to the landscape.

The buildings and structures that surround the Pioneer Axis and the Women's Quad retain much of their exterior historic integrity, and include Johnson Hall (1915), Hendricks Hall (1918), Gerlinger Hall (1921), and Susan Campbell Hall (1921). Missing, however, is Mary Spiller Hall, which was originally in the northeast corner of the Women's Quad and razed in 1951. The Collier House is at the periphery of the site and provides further definition to this space. Most all buildings have secondary entries facing the Quad.

SMALL-SCALE ELEMENTS

Describing elements such as monuments, markers, seating, fences etc.

There are many historic and non-historic small scale features within the Pioneer Axis. Historic elements include the Pioneer Mother statue (1930) by Alexander Phimster Proctor, sculptor of the "Pioneer" (1918), concrete benches and a brick masonry terrace wall. Non-historic features include plaques, lamps and signs.

EDGE CONDITIONS AND ADJACENCIES

Describing the perimeter of the site and important adjacent connections to spaces beyond.

The edge conditions and adjacencies have remained largely unchanged since the end of the era of significance. The buildings loosely define the Axis, which is bounded by Johnson and Gerlinger Halls.

CIRCULATION

Describing movement paths and associated materials for: pedestrian; automobile; bicycle; other (e.g. system, alignment, materials, character).

The northern edge of the Axis is crossed by the Johnson Lane Axis, an important east/west connector for the campus (see diagram on page 6). The southern edge is intersected by the Knight Library Axis, also an important connector route. Vehicles have access to parking lots via Johnson Lane Axis. Circulation within the Axis occurs principally on concrete and asphalt paths.

VIEWS/VISTAS

Describing focal points and views to and from the Area.

The most celebrated view from the Pioneer Axis is through Johnson Hall, which links the Pioneer Mother statue to the Pioneer statue (see diagram on page 6). Another significant view from this space is the view from Johnson Hall and Johnson Lane towards the north façade of Gerlinger Hall. There are noteworthy linear views along the two east/west circulation routes that the Pioneer Axis intersects, Johnson Lane Axis and the Knight Library Axis.

PIONEER AXIS

■ DETERMINATION OF SIGNIFICANCE

CURRENT HISTORIC DESIGNATION

- City Landmark
- National Register - full listing
name:
- National Register - partial listing
name: Women's Mem. Quad
- National Historic Landmark
- No historic designation

NATIONAL REGISTER CRITERIA

Criterion A: Significant Events

Describe events with the landscape area that have influenced the broad patterns of campus history.

The Pioneer Axis meets Criterion A for its role in the movement to recognize women in Oregon's history. Because of the university's desire to facilitate the education of female students, the Pioneer Axis also symbolizes equality in education. The Pioneer Mother statue by Alexander Phimster Proctor pays tribute to the struggles and ultimate triumph of women pioneers.

Criterion B: Significant People

Describe connections with the lives of significant persons, including designers.

Not Applicable.

Criterion C: Distinctive Characteristics

Describe elements that embody the distinctive characteristics of a type, period, or method of construction, or that represent the work of a master, or that possess high artistic values.

The Pioneer Axis meets Criterion C for its association with Ellis Lawrence's campus plan. Lawrence designed an area specifically for the women on campus and recruited landscape architect, Fred Cuthbert, to assist him. Irene H. Gerlinger also helped in the design of the Women's Quadrangle Ensemble. Gerlinger Hall bears her name. The Axis is surrounded by some of Ellis Lawrence's most celebrated buildings on campus. The Pioneer Mother statue is a fine and distinctive piece of campus statuary done by Alexander Phimster Proctor in 1932. The brick and cast stone terrace wall between Hendricks and Susan Campbell Halls was designed by Lawrence and is an excellent example of landscape masonry on campus. The planting plan harkens back to a symmetrical and cohesive design by Fred Cuthbert.

LEVEL OF SIGNIFICANCE

Rank the landscape area in term of its level of contribution to the historic significance of the university campus as a whole.

- High Significance
Considerable contribution to the history of the campus and its growth.
- Medium Significance
Noteworthy contribution the history of the campus and its growth.
- Low Significance
Discernable contribution to the history of the campus and its growth.
- Very Low/No Significance
No discernable importance to the history of the campus and its growth.



One of the cast stone benches, placed here sometime within the 1920s.



The brick and cast stone terrace wall, designed by Ellis Lawrence and constructed in the 1920s.

■ DETERMINATION OF INTEGRITY

Integrity of the Landscape Area is evaluated based on the retention of the historic characteristics described in the categories below.

LOCATION / SETTING

Are important elements still in their original location and configuration?

The Axis is named after the Pioneer Mother statue, which remains in its original location in direct axial alignment with the Pioneer statue. All of the existing buildings within the Axis date back to the era of significance.

DESIGN

How has the general structure of the landscape changed since its period of significance?

The Women's Quad was designed to be bilaterally symmetrical, as evidenced by the configuration of the buildings and the retaining wall. Over time, however, the symmetry of the planting plan has been diminished.

MATERIALS

Are original materials/vegetation that were used to structure and shape the landscape still present?

The majority the trees within the Quad date back to the era of significance. Furthermore, the expansive lawn is in keeping with its historic character. There are many historic materials and elements present, including concrete benches and the brick and masonry retaining wall.

WORKMANSHIP

Does the landscape retain characteristic workmanship from the period of significance?

The historic facades of the surrounding buildings and the historic small scale elements within the Axis retain a high degree of characteristic workmanship.

FEELING

Does the landscape evoke the period of significance?

The era of significance is strongly evoked within the current landscape.

ASSOCIATION

Is it possible to associate elements of the landscape with significant people/events?

This Axis was originally the center of campus activities for female students at the university, as announced by the matriarchal Pioneer Mother statue. All of these features still exist within the landscape and harken back to the initial use of this space.

■ INTEGRITY & CONDITION FINDINGS

HISTORIC INTEGRITY

Determine the level of historic integrity, based on the Era(s) of Significance – check one

- Excellent Integrity
Retains a very high percentage of original fabric, and the original design intent is apparent.
- Good Integrity
Retains a significant percentage of original fabric, with a discernable design intent.
- Fair Integrity
Original fabric is present, but diminished.
- Poor Integrity
Contains little historic fabric, and the original design intent is difficult to discern.

OVERALL CONDITION OF LANDSCAPE AREA

– check one

- Excellent
- Good
- Fair
- Poor

■ **RESOURCES**

— *List all primary sources used (plans, maps, surveys, photographs, drawings, newspapers, periodicals, and autobiographies) and secondary sources (books, theses, guidebooks).*

- Aerial photograph of the University of Oregon, 1936. The University of Oregon Map Library, Aerial Photo Collection.
- Aerial photograph of the University of Oregon, 1944. The University of Oregon Map Library, Aerial Photo Collection.
- Aerial photograph of the University of Oregon, 1947. The University of Oregon Map Library, Aerial Photo Collection.
- Aerial photograph of the University of Oregon, 1952. The University of Oregon Map Library, Aerial Photo Collection.
- Aerial photograph of the University of Oregon, 1960. The University of Oregon Map Library, Aerial Photo Collection.
- Aerial photograph of the University of Oregon, 1968. The University of Oregon Map Library, Aerial Photo Collection.
- Dunton, F.E. and Schwan W.J., A Biological Map of the University of Oregon Campus: Showing the Specimen Trees on the Campus. July 1913. duplicate held by the University of Oregon Planning Office
- Lee, Soyhun Park. preparer. National Register Nomination Form, for the Women's Memorial Quadrangle Ensemble. 1991.
- Long, Stephen W. "Historic Continuity A Diagnosis Report" (Eugene: University of Oregon Office of Planning and Campus Development, 1980) 1-67.
- Marshall Brothers, 1921 map of Campus, duplicate held by the University of Oregon Planning Office
- McMillan, Adell, A Common Ground. (Eugene, Oregon: Erb Memorial Union, 2003) 1-637.
- The Oregana (Eugene: the class of 1945, 1945).
- Rice, Donald B. ed. The Oregana volume V (Eugene: the class of 1914, 1914).
- Sandahl, David A. and Castro, Ricardo. "An architectural history of the University of Oregon," (unpublished manuscript, University of Oregon, 1975) Architecture and Allied Arts Library
- Shellenbarger, Michael and Lakin, Kimberly, Ellis Lawrence building survey. Salem, OR: State Historic Preservation Office, 1989.
- Shellenbarger, Michael. ed. Harmony in Diversity: The Architecture and Teaching of Ellis F. Lawrence (Eugene: University of Oregon, 1989), 1-91.
- South Central Campus Diagnosis Report (University of Oregon Planning Office, 2004)
- Teague, EH. (2004, Oct. 10). The Architecture of the University of Oregon. Retrieved Mar. 1, 2006, from <http://libweb.uoregon.edu/guides/architecture/oregon/>
- University of Oregon Catalogue: 1913-1914. (Eugene, Oregon: University of Oregon, 1914) 1-276.
- University of Oregon, 1935 map of Campus, duplicate held by the University of Oregon Planning Office
- University of Oregon, 1953 map of Campus, duplicate held by the University of Oregon Planning Office
- University of Oregon Catalogue: 1945-1946. Campus Map (Eugene, Oregon: University of Oregon, 1945)
- University of Oregon Catalogue: 1955-1956. Campus Map (Eugene, Oregon: University of Oregon, 1955)
- Electronic version available on the University of Oregon Planning Office web page: <http://uplan.uoregon.edu/projects/HLP/hlp-surveyoflandareas.htm>
- Survey research by Dustin Welch and Daniel Schaible.
- Survey form completed in Spring 2006 under the supervision of Fletcher Farr Ayotte, Inc.
- Edited by the University of Oregon Planning Office, Spring 2007.