

Straub Hall Window Condition Assessment

May 2011 (updated January 2016)

University of Oregon

Campus Planning, Design and Construction



The scale of Condition used for this survey is as follows: EXCELLENT = only superficial damage (like chipping paint), GOOD = will require some invasive repair to parts, FAIR = will require extensive invasive repair to parts, and POOR = window parts are unsalvageable.

Overall, the assessed Straub Hall windows are in GOOD condition. This survey sought to assess all windows in the building, including basement windows and roof windows/skylights. Most of the damage to the windows is superficial. Areas most affected are the brick sills and the exterior wood sill/casings' paint. In areas that have been without proper paint coverage (mainly the south and west facades), checking of the wood sills has occurred.

Unless otherwise noted all window parts and hardware appear to be original. Most windows in the building, excluding select few that correspond with staircases or the like, have been designed to be operable. Some of these windows have since become inoperable for various reasons. Some of these windows are currently considered inoperable but only need new weight cords to be operable. The majority of the windows on the first, second, and third floors are double hung with wood muntins. The basement windows are mostly double casement windows or double hung, both with wood muntins. There are four windows that are double height. These are in the staircases stretching between the third and fourth floors.

Project Contacts

Eleni Tsivitzi, Planning Associate


University of Oregon
Campus Planning, Design and Construction
1276 University of Oregon
Eugene, Oregon 97403-1276
<http://cpdc.uoregon.edu>
(541) 346-5562

Additional information about the history of Straub Hall and campus development is available in the UO Heritage Landscape Plan on the CPDC website: <http://cpdc.uoregon.edu/>.

Special thank you to Straub Hall Building manager, George Helbling.

STRAUB WINDOW CONDITION ASSESSMENT

Window Parts Key: J = Jamb, IC = Interior Casing, RS = Rail and Stiles, St = Stool

 Indicates that there is a current issue with the window impeding its function

* All parts in excellent condition otherwise unless mentioned

Window #	Window Type	Conditions							Facing Elev.	Comments	Photo
		Paint	Window Parts*	Brick Sill Condition	Hardware	Operability	Dry Rot	Overall			
024a	double hung w / wood muntins, opening from top	excellent	excellent	NA	excellent	poor, right weight cord broken	no	good	north		
025a	double hung clearstory, w / wood muntins	fair	excellent	NA	excellent	no, painted into place	no	good	north		
028a	aluminium slider clearstories	excellent	excellent	excellent, concrete sill	excellent	excellent	no	excellent	south		yes
028b	aluminium slider clearstories	excellent	excellent	excellent, concrete sill	excellent	excellent	no	excellent	south		
028c	aluminium slider clearstories	excellent	excellent	excellent, concrete sill	excellent	excellent	no	excellent	south		
030Aa	casement	good	poor, only casing remains	NA	NA	open to foundations	no	good, but no longer connects to outdoors	north	window is now an open connection to foundation	yes
030Ab	casement	good, some chipping	good	NA	excellent	yes, opens to foundations	no	good, but no longer connects to outdoors	north	window is now a closable connection to foundation	yes

* All parts in excellent condition otherwise unless mentioned

Window #	Window Type	Conditions							Facing Elev.	Comments	Photo
		Paint	Window Parts*	Brick Sill Condition	Hardware	Operability	Dry Rot	Overall			
051a	double hung w/ wood muntins, opening from top & bottom	good	excellent	moss and debris covered	fair, chipped but functional	poor, right weight cord broken	no	fair	south	only one window is noted on plans, while there are two windows in this room	
051b	double hung w/ wood muntins, opening from top & bottom	good	large gouges in top sash	moss and debris covered	excellent	poor, left weight cord broken	no	fair	south	only one window is noted on plans, while there are two windows in this room	

* All parts in excellent condition otherwise unless mentioned

Window #	Window Type	Conditions							Facing Elev.	Comments	Photo
		Paint	Window Parts*	Brick Sill Condition	Hardware	Operability	Dry Rot	Overall			
105a	double hung, lower portion operable, with wood muntins	excellent	excellent	excellent	excellent, modified	yes	no	excellent	south	opens into courtyard	yes
109a	double hung, lower portion operable, with wood muntins	excellent	excellent	excellent	excellent, modified with secondary locks	poor, right weight cord broken	no	excellent	east	windows new (2001), they do not open windows in this room to control humidity, due to its proximity to the MRI.	
109b	double hung, lower portion operable, with wood muntins	excellent	excellent	excellent	excellent, modified with secondary locks	no, painted into place	no	excellent	east		
109c	double hung, lower portion operable, with wood muntins	excellent	excellent	excellent	excellent, modified with secondary locks	no, painted into place	no	excellent	east		
109d	double hung, lower portion operable, with wood muntins	excellent	excellent	excellent	excellent, modified with secondary locks	poor, broken left weight cord	no	excellent	north		
109e	double hung, lower portion operable, with wood muntins	excellent	excellent	excellent	modified with secondary locks, broken left weight cord	poor	no	excellent	north		

* All parts in excellent condition otherwise unless mentioned

Window #	Window Type	Conditions							Facing Elev.	Comments	Photo
		Paint	Window Parts*	Brick Sill Condition	Hardware	Operability	Dry Rot	Overall			
111a	double hung, lower portion operable. with wood muntins	excellent	excellent	excellent	modified with secondary locks, broken left weight cord	poor	no	good	north		
111b	double hung, lower portion operable, with wood muntins	excellent	excellent	excellent	excellent, modified with secondary locks	poor, sticky	no	good	north	window not on current drawings	
113a	double hung, lower portion operable, with wood muntins	excellent	excellent	excellent	excellent, modified with secondary locks	yes	no	excellent	north		
S113a	double hung, lower portion operable, with wood muntins	excellent	excellent	excellent	none	no, not an operable window	no	excellent	south	opens into courtyard	
119a	double hung, lower portion operable, with wood muntins	excellent	excellent	excellent	excellent, modified with secondary locks	yes	no	excellent	south		
119b	double hung, lower portion operable with wood muntins	excellent	excellent	excellent	excellent, modified with secondary locks	yes	no	excellent	north		

* All parts in excellent condition otherwise unless mentioned

Window #	Window Type	Conditions							Facing Elev.	Comments	Photo
		Paint	Window Parts*	Brick Sill Condition	Hardware	Operability	Dry Rot	Overall			
119c	double hung, lower portion operable with wood muntins	excellent	excellent	excellent	excellent, modified with secondary locks	yes	no	excellent	north		
S120a	fixed wood window with muntins	excellent	excellent	excellent	none	no	no	excellent	east	window not on current plan	
122a	double hung w / wood muntins, opening from top & bottom	excellent	excellent	good, some moss accumulation	fair, chipped but functional	top window has been fixed	no	excellent	north		
122b	double hung w / wood muntins, opening from top & bottom	excellent	excellent	good, some moss accumulation	excellent	yes	no	excellent	north		
122c	double hung w / wood muntins, opening from top & bottom	excellent	excellent	excellent	excellent	top window has been fixed	no	excellent	north		
122d	double hung w / wood muntins, opening from top & bottom	excellent	excellent	good, some moss accumulation	fair, chipped but functional	yes	no	excellent	west		

* All parts in excellent condition otherwise unless mentioned

Window #	Window Type	Conditions							Facing Elev.	Comments	Photo
		Paint	Window Parts*	Brick Sill Condition	Hardware	Operability	Dry Rot	Overall			
126a	double hung w/ wood muntins, opening from bottom	excellent	excellent	excellent	fair, chipped but functional	no longer operable, window has been fixed in place and one of the top panes fit with a fan	no	excellent, but altered	east	window diffuse glass, lower one painted white.	yes
127a	double hung w/ wood muntins, opening from top & bottom	excellent	excellent	excellent	excellent	excellent	no	excellent	west		
128a	double hung w/ wood muntins, opening from top & bottom	excellent	excellent	excellent	excellent	excellent	no	excellent	east		
129a	double hung w/ wood muntins, opening from top & bottom	excellent	excellent	excellent	excellent	excellent	no	excellent	west	Screen on exterior, lower window does not remain open on its own.	
130a	double hung w/ wood muntins, opening from top & bottom	excellent	excellent	excellent	excellent	excellent	no	excellent	east	has weight cord protectors.	
S130a	fixed wood window with muntins	excellent	excellent	excellent	none	no	no	excellent	east		

* All parts in excellent condition otherwise unless mentioned

Window #	Window Type	Conditions							Facing Elev.	Comments	Photo
		Paint	Window Parts*	Brick Sill Condition	Hardware	Operability	Dry Rot	Overall			
131a	double hung w/ wood muntins, opening from top	excellent	excellent	excellent	excellent	excellent	no	excellent	west	With exterior screen. May had been top opening as well and painted in place.	
131b	double hung w/ wood muntins, opening from top & bottom	excellent	excellent	excellent	excellent	poor, right weight cord broken	no	excellent	west		
137a	double hung w/ wood muntins, opening from top & bottom	flaking on muntins	excellent	good, some moss accumulation	good, has been modified with an additional sling lock on bottom sash	excellent	no	good	west	signs of past condensation accumulation on muntins	
139a	double hung w/ wood muntins, opening from bottom	fair, flaking on sill and outer casing	good	good moss accumulation	good, lock and pulls are intact	yes	no	good	west		yes
139b	double hung w/ wood muntins, opening from bottom	fair, extensive flaking on sill and outer casing	good	good moss accumulation	good, lock and pulls are intact	yes	no	good	west		yes

* All parts in excellent condition otherwise unless mentioned

Window #	Window Type	Conditions							Facing Elev.	Comments	Photo
		Paint	Window Parts*	Brick Sill Condition	Hardware	Operability	Dry Rot	Overall			
140a	double hung w/ wood muntins, opening from bottom	excellent	excellent	excellent	fair, initial lock no longer functions, but is still in place, a new lock placed next to old one	yes	no	excellent	north	modified with various types of diffuse glass	
141a	double hung w/ wood muntins, opening from top & bottom	good	excellent	good, some moss accumulation	fair, chipped but functional	poor, right weight cord broken, top fixed in place with paint	no	fair	west		
142a	fixed wood window w/ muntins over a double hung w/ wood muntins which is operable from top & bottom	excellent	excellent	good, large amount of moss accumulation	excellent	poor, top window stuck in place, lower window operable	no	excellent	north	opens into courtyard	yes
142b	fixed wood window w/ muntins over a double hung w/ wood muntins which is operable from top & bottom	excellent	excellent	good, large amount of moss accumulation	excellent	poor, top window stuck in place, lower window operable	no	excellent	north	opens into courtyard	

* All parts in excellent condition otherwise unless mentioned

Window #	Window Type	Conditions							Facing Elev.	Comments	Photo
		Paint	Window Parts*	Brick Sill Condition	Hardware	Operability	Dry Rot	Overall			
142c	transome window, fixed wood window with muntins	excellent	excellent	excellent, wood sill	none	no	no	excellent	north	opens into courtyard	
142d	fixed wood window w/ muntins over a double hung w/ wood muntins which is operable from top & bottom	excellent	excellent	good, large amount of moss accumulation	excellent	poor, top window stuck in place, lower window operable	no	excellent	north	opens into courtyard	
146a	gable end clearstories, w/ wood muntins and mullions	excellent	excellent	unable to evaluate due to height	appears to be in excellent condition	yes, the windows on either end appear to be operable, due to the presence of hardware	no	excellent	north	Assessment was made from ground level, window height ~ 12'	yes
146a	gable end clearstories, w/ wood muntins and mullions	excellent	excellent	unable to evaluate due to height	appears to be in excellent condition	yes, the windows on either end appear to be operable, due to the presence of hardware	no	excellent	north	Assessment was made from ground level, window height ~ 12'	

* All parts in excellent condition otherwise unless mentioned

Window #	Window Type	Conditions							Facing Elev.	Comments	Photo
		Paint	Window Parts*	Brick Sill Condition	Hardware	Operability	Dry Rot	Overall			
L150a	arched transoms, w/ wood mullions & muntins	excellent	excellent	good, heat damage	lock and chain attached in Lobby interior	no	no	excellent	east	Does the lock and chain suggest that these windows were operable before the connecting corridor was installed?	yes
L150b	arched transoms, w/ wood mullions & muntins	excellent	excellent	good, heat damage		no	no	excellent	east	interior	yes
L150c	arched transoms, w/ wood mullions & muntins	excellent	excellent	good, heat damage		no	no	excellent	east	interior	yes
L150d	arched transoms, w/ wood mullions & muntins	excellent	excellent	excellent, wood sill	none	no	no	excellent	west		yes
L150e	arched transoms, w/ wood mullions & muntins	excellent	excellent	excellent, wood sill	none	no	no	excellent	west		
L150f	arched transoms, w/ wood mullions & muntins	excellent	excellent	excellent, wood sill	none	no	no	excellent	west		
152Aa	double hung w/ wood muntins, opening from bottom	excellent	excellent	excellent	excellent	yes	no	excellent	west	diffuse glazing	

* All parts in excellent condition otherwise unless mentioned

Window #	Window Type	Conditions							Facing Elev.	Comments	Photo
		Paint	Window Parts*	Brick Sill Condition	Hardware	Operability	Dry Rot	Overall			
152Ba	double hung w/ wood muntins, opening from top & bottom	deeply flaked sill and lower exterior casing	excellent	major moss accumulation	excellent	yes	no	fair	south	major moss accumulation, sill sits ~1" above ground level	yes
153a	double hung w/ wood muntins	excellent	excellent	major moss accumulation	excellent	no	no	excellent	west	this window has been sheetrocked over from the interior, it is located in the women's bathroom. Assessment made from exterior.	
154a	double hung w/ wood muntins and a fixed upper	excellent, some chipping on exterior	excellent with exterior wood framed screen	good, minor moss accumulation	excellent	not accessible	no	excellent	south		yes
155a	double hung w/ wood muntins and a fixed upper	good, some chipping	excellent with exterior wood framed screen	good	excellent	yes	no	excellent	south		yes
155b	double hung w/ wood muntins and a fixed upper	good, some chipping	excellent	good	excellent	no	no	good	south		yes
156Ba	double hung w/ wood muntins and a fixed upper	good, some chipping	excellent	good	excellent, weight cord painted	no	no	good	south		yes
156Da	double hung w/ wood muntins	not accessible	not accessible	not accessible	not accessible	not accessible	not accessible	not accessible	south	Window blocked by a testing machine and is unreachable to assess	

* All parts in excellent condition otherwise unless mentioned

Window #	Window Type	Conditions							Facing Elev.	Comments	Photo
		Paint	Window Parts*	Brick Sill Condition	Hardware	Operability	Dry Rot	Overall			
156Db	double hung w/ wood muntins	good	excellent with exterior wood framed screen	good	right weight cord missing	no	no	good	east		yes
156Dc	double hung w/ wood muntins	not accessible	not accessible	not accessible	not accessible	not accessible	not accessible	not accessible	east	Window blocked by a testing machine and is unreachable to assess	
156Dd	double hung w/ wood muntins	excellent	excellent with exterior wood framed screen	excellent	good, lock and pulls are intact	no	no	good	east	the top section of the window was loose so it was unsafe to attempt to open the window	yes
168Cb	vinyl, horizontal slider	excellent	excellent	flushed with metal	excellent	yes	no	excellent	west	bars and screens on new vinyl windows, exterior plants obstructing opening	yes
168Ca	vinyl, horizontal slider	excellent	excellent	flushed with metal	excellent	yes	no	excellent	north	bars and screens on new vinyl windows	yes
170a	casement window with wood muntins	excellent	good	good, minor moss accumulation	new locking hardware - two sliders on top and two on bottom	yes	no	excellent	west	altered from original configuration	yes
S170a	6 pane fixed window with wood muntins	good, some chipping	good	excellent	none	no	no	good	east	has this window been replaced? There seems to be grooving for movement but it is unoperable.	yes
172a	6 pane double hung w/ wood muntins	good, some chipping	good	good, moss accumulation	good, lock and pulls are intact	yes	no	excellent	west		yes

* All parts in excellent condition otherwise unless mentioned

Window #	Window Type	Conditions							Facing Elev.	Comments	Photo
		Paint	Window Parts*	Brick Sill Condition	Hardware	Operability	Dry Rot	Overall			
178a	double hung w/ wood muntins	excellent	excellent with exterior wood framed screen	excellent	excellent	yes	no	excellent	east		yes
178b	double hung w/ wood muntins	good	good, lower 3 panels have been replaced with textured glass	not accessible	excellent	no	no	good	west		yes
178c	double hung w/ wood muntins	good	excellent with exterior wood framed screen	excellent	excellent	no	no	good	west	the top section of the window was loose so it was unsafe to attempt to open the window	yes
178Aa	double hung w/ wood muntins	good, some chipping	good	excellent	not accessible	not accessible	no	good	east	This window was only able to be accessed from exterior	
180a	double hung w/ wood muntins	excellent	excellent	excellent	excellent	not accessible	no	excellent	east		
180b	double hung w/ wood muntins	excellent	excellent with vertical blinds attached to casement	excellent	excellent	yes	no	excellent	west		yes
180c	double hung w/ wood muntins	excellent interior, severe chipping on exterior	excellent with vertical blinds attached to casing	good, some moss accumulation	right weight cord missing	no	no	good	west		yes

* All parts in excellent condition otherwise unless mentioned

Window #	Window Type	Conditions							Facing Elev.	Comments	Photo
		Paint	Window Parts*	Brick Sill Condition	Hardware	Operability	Dry Rot	Overall			
186a	hopper with wood muntins	excellent	top of casing removed for pipe	not accessible	N/A	no	not accessible	fair	west	this window leads to a concrete cove below grade and does not let in air or much light at all	yes
186b	hopper with wood muntins	good, some chipping	good	good, some moss accumulation	excellent	yes	no	excellent	south		yes
189a	double casement	interior muntins and sash showing signs of past condensation accumulation	good, one glass pane has wires	good, minor moss accumulation	excellent	no	no	good	south		yes
189b	double casement	interior muntins and sash showing signs of past condensation accumulation	good	good, minor moss accumulation	excellent	no	no	good	south		yes
191a	double hung w/ wood muntins	good, some chipping	excellent	good moss accumulation	missing pulls	yes	no	good	north		yes

* All parts in excellent condition otherwise unless mentioned

Window #	Window Type	Conditions							Facing Elev.	Comments	Photo
		Paint	Window Parts*	Brick Sill Condition	Hardware	Operability	Dry Rot	Overall			
193a	double hung w/ wood muntins	good, some chipping	good, wood framed screen attached outside	excellent	missing pulls	yes	no	excellent	north		
194a	double hung w/ wood muntins	excellent, some chipping on exterior	excellent with horizontal blinds attached to casing	good, some moss accumulation	missing pulls	yes	no	good	south		yes
195a	double hung w/ wood muntins	good	good, bottom 6 panels are wood, top 6 panels are painted glass	not accessible	good, lock and pulls are intact	yes, top falls down if unlocked	no	good	north		yes
196a	double hung w/ wood muntins	excellent	excellent with exterior wood framed screen	excellent	excellent	yes	no	excellent	north		yes
196Aa	double hung w/ wood muntins	good, some chipping	excellent with exterior wood framed screen	good, minor moss accumulation	missing pulls	no, painted into place	no	excellent	north	This window does not appear on plans	yes
S198a	fixed wood window with muntins	excellent	excellent	good	N/A	no, not an operable window	no	excellent	north		yes

* All parts in excellent condition otherwise unless mentioned

Window #	Window Type	Conditions							Facing Elev.	Comments	Photo
		Paint	Window Parts*	Brick Sill Condition	Hardware	Operability	Dry Rot	Overall			
199a	double hung w/ wood muntins	good, some chipping on interior, extensive chipping on exterior	good, a few glass panels are cracked or broken	excellent	missing upper left cord	no, top falls down if unlocked	no	good	south	the wood casing around this window is stained to match wainscot	yes
199b	double hung w/ wood muntins	fair, extensive flaking on muntins	good	good, minor moss accumulation	excellent	yes	no	excellent	east		yes
199Aa	double hung w/ wood muntins	excellent	excellent	excellent	excellent	yes, but the top drops when unlocked	no	excellent	east	the wood casing around this window is stained to match wainscot	yes
199Ab	double hung w/ wood muntins	excellent	excellent	good, minor moss accumulation	excellent	yes	no	excellent	north	the wood casing around this window is stained to match wainscot	yes
201a	double hung w/ wood muntins	good, some chipping	excellent	good, some moss accumulation	excellent	yes	no	good	east		yes
201b	double hung w/ wood muntins	excellent	excellent	good, large amount of moss accumulation	excellent	not accessible	no	excellent	north		yes
202a	double hung w/ wood muntins	good, some chipping	good, some splitting in the lower casing	excellent	excellent	yes	no	good	east		yes
202b	double hung w/ wood muntins	good, some chipping	good	good, metal sheathing covering sill	excellent	yes, a bit sticky	no	good	east	This window does not appear on plans	yes
H202a	stacked wood awning window with muntins	interior good, exterior poor	good	good, metal sheathing covering sill	missing lock	yes, opens to rooftop	no	good	south		yes

* All parts in excellent condition otherwise unless mentioned

Window #	Window Type	Conditions							Facing Elev.	Comments	Photo
		Paint	Window Parts*	Brick Sill Condition	Hardware	Operability	Dry Rot	Overall			
203a	double hung w/ wood muntins	excellent	excellent with scars from locks	good, large amount of moss accumulation	excellent, right weight cord is freying	yes, a bit sticky	no	good	north		yes
204a	stacked wood awning windows with wood muntins	poor, sill w/out paint, deep flaking on exterior casing, interior muntins showing signs of past condensation accumulation	stool cracked	sill flashed metal, good condition	excellent	yes	yes	fair	south	interior muntins showing signs of past condensation accumulation	yes
204b	stacked wood awning windows with wood muntins	poor, sill out/out paint, deep flaking on exterior casing, interior muntins showing signs of past condensation accumulation	lower jamb on upper window with multiple cracks at hardware attachment	sill flashed metal, good condition	excellent	yes	yes	fair	south	interior muntins showing signs of past condensation accumulation	yes
205a	double hung w/ wood muntins	excellent	excellent	good moss accumulation	excellent	yes	no	excellent	north		yes
207a	double hung w/ wood muntins	excellent	excellent with horizontal blinds attached to casing	good moss accumulation	excellent	not accessible	no	excellent	north		yes

* All parts in excellent condition otherwise unless mentioned

Window #	Window Type	Conditions							Facing Elev.	Comments	Photo
		Paint	Window Parts*	Brick Sill Condition	Hardware	Operability	Dry Rot	Overall			
208a	double hung w/ wood muntins	good, some chipping on interior, extensive chipping on exterior	stool damaged, lower 8 glass panes painted white	good, metal sheathing covering sill	good, lock and pulls are intact	top window sits on exterior supports for ventilation, bottom is fixed	no	fair	south	sill damage is from stall sizes changing through the years and the slot for stall supports moving	yes
209a	double hung w/ wood muntins	excellent, some chipping on interior	good, few chips and dents	good moss accumulation	excellent	yes	no	good	north		yes
210a	stacked wood awning window with muntins	good, some chipping	dropped ceiling attached to upper casing, vertical blinds attached	excellent	excellent	yes	no	excellent	south	opens to rooftop	yes
210b	stacked wood awning window with muntins	good, some chipping	dropped ceiling attached to upper casing, vertical blinds attached	good, mortar crack evident	excellent	yes	no	excellent	south	opens to rooftop	yes
210c	stacked wood awning window with muntins	good, some chipping	dropped ceiling attached to upper casing, vertical blinds attached	excellent	excellent	not accessible	no	excellent	south	opens to rooftop	

* All parts in excellent condition otherwise unless mentioned

Window #	Window Type	Conditions							Facing Elev.	Comments	Photo
		Paint	Window Parts*	Brick Sill Condition	Hardware	Operability	Dry Rot	Overall			
210d	stacked wood awning window with muntins	good, some chipping	dropped ceiling attached to upper casing, vertical blinds attached	excellent	double lock, no pull above awning	yes	no	excellent	south		
S210a	double hung w/ wood muntins	good, some chipping on interior, extensive chipping on exterior	good, few chips and dents	excellent	excellent	no, painted into place	no	excellent	south		yes
211a	double hung w/ wood muntins	excellent	excellent	good, moss accumulation	lock is broken but functional	yes, but the top drops when unlocked	no	excellent	north		yes
212a	double hung w/ wood muntins	excellent	excellent with scars from locks	good, large amount of moss accumulation	excellent	yes, but the top drops when unlocked	no	excellent	north		yes
H219a	16 pane, double hung w/ wood muntins	excellent	excellent, minor flaking on sill	good, some moss accumulation	excellent	yes	no	excellent	east		yes
220a	double hung w/ wood muntins, opening from top & bottom	excellent	excellent	good moss accumulation	excellent	fair, sticky	no	excellent	north		

* All parts in excellent condition otherwise unless mentioned

Window #	Window Type	Conditions							Facing Elev.	Comments	Photo
		Paint	Window Parts*	Brick Sill Condition	Hardware	Operability	Dry Rot	Overall			
221a	double hung w/ wood muntins, opening from top & bottom	excellent	excellent	good, moss accumulation	excellent	poor, very sticky	no	excellent	north		
221b	double hung w/ wood muntins, opening from top & bottom	fair, extensive flaking on sill	excellent	good, minor moss accumulation	excellent	excellent	no	excellent	west		
223a	double hung w/ wood muntins, opening from top & bottom	fair, extensive flaking on sill	left jamb cracked, sill checked,	good, minor moss accumulation	upper left weight cord broken	poor	no	fair	east	window not on current plan	
224a	double hung w/ wood muntins, opening from top & bottom	fair, extensive flaking on sill	excellent	excellent	excellent	yes	no	excellent	east		
225a	double hung w/ wood muntins, opening from top & bottom	fair, extensive flaking on sill	excellent	good, some moss accumulation	excellent	yes, a bit sticky	no	excellent	west		
226a	stacked wood awning windows with wood muntins	excellent		excellent	excellent	yes	no	excellent	east	two large nails in sill	yes

* All parts in excellent condition otherwise unless mentioned

Window #	Window Type	Conditions							Facing Elev.	Comments	Photo
		Paint	Window Parts*	Brick Sill Condition	Hardware	Operability	Dry Rot	Overall			
226b	stacked wood awning windows with wood muntins	excellent	excellent	excellent	excellent	yes	no	excellent	east		
227a	double hung w/ wood muntins, opening from top & bottom	fair, extensive flaking on sill and outer casing	upper jamb damaged	good, minor moss accumulation	excellent	yes	no	good	west	signs of past condensation accumulation on muntins	
228a	stacked wood awning windows with wood muntins	sill flaking	excellent	excellent	excellent	yes	no	excellent	east	opens onto fire escape	
228b	stacked wood awning windows with wood muntins	sill flaking	excellent	excellent	excellent	yes	no	excellent	east		
229a	double hung w/ wood muntins, opening from top & bottom	fair, extensive flaking on sill and outer casing	stool cracked and repaired	good, minor moss accumulation	excellent	yes	no	excellent	west		
230a	stacked wood awning windows with wood muntins	sill flaking	excellent	excellent	excellent	yes	no	excellent	east	opens onto fire escape	

* All parts in excellent condition otherwise unless mentioned

Window #	Window Type	Conditions							Facing Elev.	Comments	Photo
		Paint	Window Parts*	Brick Sill Condition	Hardware	Operability	Dry Rot	Overall			
S230a	16 pane, double hung w/ wood muntins	sill flaking	good	excellent	missing upper left cord	yes, a bit sticky	no	good	east		yes
231a	double hung w/ wood muntins, opening from top & bottom	fair, extensive flaking on sill and outer casing	sill damaged	good, some moss accumulation	upper left cord broken	yes	no	excellent	west	minor damage to upper sill on top window	
232a	stacked wood awning windows with wood muntins	sill flaking, minor flack on lower interior muntins due to past water accumulation	excellent	excellent	excellent	yes	no	excellent	east		
232b	stacked wood awning windows with wood muntins	sill flaking, minor flack on lower interior muntins due to past water accumulation	excellent	excellent	excellent, top lock has been replaced	yes	no	excellent	east	opens onto fire escape	yes
233a	double hung w/ wood muntins, opening from top & bottom	no paint on sill, flaking on exterior casing	excellent	good, some moss accumulation	excellent	yes	no	good	west		
235a	double hung w/ wood muntins, opening from top & bottom	flaking on sill	sash damaged	good, some moss accumulation	excellent	yes	no	fair	west	top sash of top window deeply cracked	

* All parts in excellent condition otherwise unless mentioned

Window #	Window Type	Conditions							Facing Elev.	Comments	Photo
		Paint	Window Parts*	Brick Sill Condition	Hardware	Operability	Dry Rot	Overall			
H236a	N/A	N/A	N/A	N/A	N/A	N/A	N/A	N/A	east	this is not a window but rather the elevator shaft. If a window once existed, all trace is gone	yes
237a	double hung w/ wood muntins, opening from top & bottom	paint gone from sill	jamb cracked, casing cracked	good, some moss accumulation	excellent	yes	no	fair	west	casing and jamb on left side are cracked.	
238a	stacked wood awning window with muntins	excellent	excellent	excellent	excellent, with cord protectors	yes	no	excellent	east		yes
239a	double hung w/ wood muntins, opening from top & bottom	fair, flaking on sill and outer casing	sash and muntins damaged by hardware rubbing	good, minor moss accumulation	excellent	yes	no	fair	west	sill used for planters	yes
240a	stacked wood awning window with muntins	flaking on sill	excellent	excellent	Lots of leftover hardware remains on window, not currently serving any function	yes	no	good	east	altered from original configuration	yes

* All parts in excellent condition otherwise unless mentioned

Window #	Window Type	Conditions							Facing Elev.	Comments	Photo
		Paint	Window Parts*	Brick Sill Condition	Hardware	Operability	Dry Rot	Overall			
240b	stacked wood awning window with muntins	flaking on sill	excellent	excellent	excellent	yes	no	good	east	cracked bottom sash on top window, upper sash on bottom window (appears to be result of hardware retrofit).	yes
241a	double hung w/ wood muntins, opening from top & bottom	sill and bottom exterior casing flaking	excellent	good, some moss accumulation	weight cord on lower right window broken	OK, top window sticky	no	excellent	west		
242a	stacked wood awning window with muntins	excellent	excellent	good, some moss accumulation	excellent	yes	no	excellent	east		yes
242b	stacked wood awning window with muntins	excellent	excellent	good, some moss accumulation	excellent	yes	no	excellent	east		
243a	double hung w/ wood muntins, opening from top & bottom	fair, extensive flaking on sill and outer casing	excellent	good	upper left cord broken	OK	no	good	north		yes
245a	double hung w/ wood muntins, opening from top & bottom	fair	excellent, minor flaking on sill	good	upper left cord broken	OK	no	good	north		

* All parts in excellent condition otherwise unless mentioned

Window #	Window Type	Conditions							Facing Elev.	Comments	Photo
		Paint	Window Parts*	Brick Sill Condition	Hardware	Operability	Dry Rot	Overall			
H245a	**see L150a**										
H245b	**see L150b**										
H245c	**see L150c**										
251a	double hung w/ wood muntins	fair, extensive flaking on sill and outer casing	good	excellent	right weight cord broken	no	no	good	south		yes
252a	stacked wood awning window with muntins	good, some chipping	good, dropped ceiling attached at top	excellent	excellent	yes	no	excellent	east	opens to rooftop	yes
253a	double hung w/ wood muntins	good, some chipping	good, vertical blinds attached at top	good, some moss accumulation	left weight cord broken	no, top falls down if unlocked, bottom painted into place	no	good	west		yes
254a	12 pane double hung, with wood muntins	excellent	good, lower 6 panels have been replaced with white painted wood	excellent	excellent	bottom is non-operable but top sinks 2" resting on unseen exterior supports	no	good	east	lower panels wood for privacy - this space is a restroom	yes
255a	double hung w/ wood muntins	good, some chipping on interior, extensive chipping on exterior	excellent	good, some moss accumulation	excellent	not accessible	no	good	west		yes

* All parts in excellent condition otherwise unless mentioned

Window #	Window Type	Conditions							Facing Elev.	Comments	Photo
		Paint	Window Parts*	Brick Sill Condition	Hardware	Operability	Dry Rot	Overall			
256a	double hung w/ wood muntins	good, some chipping on interior, extensive chipping on exterior	excellent	good	excellent	yes	no	good	east		
257a	double hung w/ wood muntins	excellent interior, severe chipping on exterior	good, simple case to match wainscot	good, minor moss accumulation	excellent	yes	no	excellent	west		yes
258a	double hung w/ wood muntins	good, some chipping	excellent	good, minor moss accumulation	right weight cord missing	yes, but the top drops when unlocked	no	good	east		yes
258b	double hung w/ wood muntins	good, some chipping	right case cut	good, minor moss accumulation	excellent	no, painted into place	no	good	east	This window does not appear on plans	yes
259a	double hung w/ wood muntins	excellent interior, severe chipping on exterior	good, cracked stool	good, moss accumulation	excellent	yes	no	good	west		yes
270a	stacked wood awning window with muntins	good, some chipping	dropped ceiling attached to upper casing, vertical blinds attached,	excellent	excellent	yes	no	good	east	split in bottom rail	yes
270b	stacked wood awning window with muntins	good, some chipping	dropped ceiling attached to upper casing, vertical blinds attached	excellent	excellent	yes	no	good	east		yes

* All parts in excellent condition otherwise unless mentioned

Window #	Window Type	Conditions							Facing Elev.	Comments	Photo
		Paint	Window Parts*	Brick Sill Condition	Hardware	Operability	Dry Rot	Overall			
5270a	16 pane, double hung w/ wood muntins	good, some chipping	excellent	excellent	missing lock	yes, very sticky	no	good	east		yes
271a	double hung w/ wood muntins	good, some chipping	splitting in case	good, minor moss accumulation	excellent	no, top falls down if unlocked	no	good	west		yes
272a	stacked wood awning window with muntins	good, some chipping	dropped ceiling attached to upper casing, vertical blinds attached	good, minor moss accumulation	double lock, no pull above awning	yes	no	good	east		
272b	stacked wood awning window with muntins	good, some chipping	dropped ceiling attached to upper casing, vertical blinds attached	good, minor moss accumulation	double lock, no pull above awning	yes	no	good	east		
273a	double hung w/ wood muntins	good, some chipping	righ case in wall...	good moss accumulation	excellent	yes, a bit sticky	no	good	west		yes
274a	12 pane double hung, with wood muntins	excellent	all glass replaced with white painted wood	excellent	excellent	yes	no	good	east	wood replacing glass for privacy - another restroom	yes
278a	double hung w/ wood muntins	good, some chipping	good, horizontal blinds attached at top, chips and dents	excellent	excellent	not accessible	no	good	east		

* All parts in excellent condition otherwise unless mentioned

Window #	Window Type	Conditions							Facing Elev.	Comments	Photo
		Paint	Window Parts*	Brick Sill Condition	Hardware	Operability	Dry Rot	Overall			
278b	double hung w/ wood muntins	good, some chipping	good, horizontal blinds attached at top, chips and dents	excellent	excellent	not accessible	no	good	east		
279a	double hung w/ wood muntins	good, some chipping	good, horizontal blinds attached at top	good moss accumulation	excellent	yes, but the top drops when unlocked	no	good	west		yes
279b	double hung w/ wood muntins	good, some chipping	good, horizontal blinds attached at top, chips and dents	good moss accumulation	excellent	yes	no	good	west		yes
283a	not accessible	not accessible	not accessible	not accessible	not accessible	not accessible	not accessible	N/A	west	this room is under lock and key due to confidential files	
283b	not accessible	not accessible	not accessible	not accessible	not accessible	not accessible	not accessible	N/A	west	this room is under lock and key due to confidential files	
284a	double hung w/ wood muntins	good, some chipping	good, horizontal blinds attached at top	good, some moss accumulation	broken right weight cord	no, painted into place	no	good	south		yes
284b	double hung w/ wood muntins	good, some chipping	good, horizontal blinds attached at top	good moss accumulation	excellent	no, painted into place	no	good	south		yes
S284a	16 pane, double hung w/ wood muntins	excellent	excellent	good, some moss accumulation	excellent	no, painted into place	no	good	east		yes

* All parts in excellent condition otherwise unless mentioned

Window #	Window Type	Conditions							Facing Elev.	Comments	Photo
		Paint	Window Parts*	Brick Sill Condition	Hardware	Operability	Dry Rot	Overall			
H286a	stacked wood awning windows with wood muntins	excellent	excellent	good, some moss accumulation	excellent	bottom is operable, top is not	no	good	north		yes
H286b	stacked wood awning windows with wood muntins	excellent	excellent	good, moss accumulation	excellent	yes	no	excellent	north		yes
H286c	stacked wood awning windows with wood muntins	good, some chipping	excellent	good, some moss accumulation	missing pulls	yes	no	good	north		yes
287a	double hung w/ wood muntins	excellent interior, severe chipping on exterior	good, horizontal blinds attached at top, split in casing	good, minor moss accumulation	excellent	yes, but the top drops when unlocked	no	good	south		
288a	double hung w/ wood muntins	good, some chipping on interior, extensive chipping on exterior	good, horizontal blinds attached at top	good	left weight cord broken	yes, top sinks	no	good	south		
289a	double hung w/ wood muntins	excellent interior, severe chipping on exterior	excellent	good, minor moss accumulation	missing upper left cord	no, painted into place	no	good	north		

* All parts in excellent condition otherwise unless mentioned

Window #	Window Type	Conditions							Facing Elev.	Comments	Photo
		Paint	Window Parts*	Brick Sill Condition	Hardware	Operability	Dry Rot	Overall			
290a	stacked wood awning window with muntins	excellent	excellent	good, minor moss accumulation	excellent	yes	no	good	north		
290b	stacked wood awning window with muntins	excellent	excellent	good, minor moss accumulation	excellent	yes	no	good	north		
S290a	16 pane, double hung w/ wood muntins	good, some chipping	excellent	good, some moss accumulation	broken cord on left	no	no	good	north		yes
291a	double hung w/ wood muntins	good, some chipping	good, horizontal blinds attached at top	good, minor moss accumulation	excellent	yes	no	excellent	south		yes

* All parts in excellent condition otherwise unless mentioned

Window #	Window Type	Conditions							Facing Elev.	Comments	Photo
		Paint	Window Parts*	Brick Sill Condition	Hardware	Operability	Dry Rot	Overall			
292a	stacked wood awning window with muntins	excellent	excellent	good moss accumulation	excellent	yes	no	excellent	north		
292b	stacked wood awning window with muntins	excellent	excellent	good moss accumulation	excellent	yes	no	excellent	north		
293a	double hung w/ wood muntins	excellent interior, severe chipping on exterior	excellent	good, minor moss accumulation	excellent	yes, but the top drops when unlocked	no	excellent	south		yes
294a	double hung	excellent	good, lower 8 panels have been painted white	not accessible	excellent	no	no	good	north		
295a	double hung w/ wood muntins	excellent interior, severe chipping on exterior	excellent	good, minor moss accumulation	excellent	yes	no	excellent	south		yes
295b	double hung w/ wood muntins	excellent interior, severe chipping on exterior	excellent, horizontal and vinyl blinds attached	good, minor moss accumulation	excellent	yes	no	excellent	south		yes
295c	double hung w/ wood muntins	good, some chipping	excellent, horizontal and vinyl blinds attached	good moss accumulation	excellent	no, painted into place	no	excellent	east		yes

* All parts in excellent condition otherwise unless mentioned

Window #	Window Type	Conditions							Facing Elev.	Comments	Photo
		Paint	Window Parts*	Brick Sill Condition	Hardware	Operability	Dry Rot	Overall			
298a	double hung w/ wood muntins	good, some chipping	excellent	good moss accumulation	excellent	not accessible	no	good	east		
298b	double hung w/ wood muntins	excellent	excellent	good, some moss accumulation	excellent	not accessible	no	excellent	north		
301a	double hung w/ wood muntins	good, some chipping	good, horizontal blinds attached at top	good, some moss accumulation	excellent	yes, but the top drops when unlocked	no	good	east		
301b	double hung w/ wood muntins	excellent	good, horizontal blinds attached at top	good, some moss accumulation	excellent	yes	no	good	north		
302a	double hung w/ wood muntins	excellent interior, severe chipping on exterior	good, horizontal blinds attached at top	excellent	excellent	yes, but the top drops when unlocked	no	good	south		yes
302b	double hung w/ wood muntins	good, some chipping	good, horizontal blinds attached at top	good, some moss accumulation	excellent	no, painted into place	no	good	east		
H302a	stacked wood awning window with muntins	interior is good with minimal chipping, exterior is very poor with extensive chipping	excellent	excellent	excellent	yes	no	excellent	south		yes

* All parts in excellent condition otherwise unless mentioned

Window #	Window Type	Conditions							Facing Elev.	Comments	Photo
		Paint	Window Parts*	Brick Sill Condition	Hardware	Operability	Dry Rot	Overall			
H302b	stacked wood awning window with muntins	excellent	excellent	excellent	excellent, all new hardware	yes	no	excellent	south	this window to seems to be new construction. It has new hardware and does not appear as a window with casement on the current plans	yes
303a	double hung w/ wood muntins	excellent	minor cracking or splitting in casing	good, minor moss accumulation	excellent	yes	no	good	north		yes
304a	stacked wood awning window with muntins	poor, sill w/out paint, deep flaking on exterior casing, interior muntins showing signs of past condensation accumulation	dropped ceiling attached to upper casing, horizontal blinds attached	excellent	excellent	yes	no	good	south	most 'damage' to this window is superficial and can be repaired	yes
304b	stacked wood awning window with muntins	poor, sill w/out paint, deep flaking on exterior casing, interior muntins showing signs of past condensation accumulation	dropped ceiling attached to upper casing, horizontal blinds attached	excellent	excellent	yes	no	good	south	most 'damage' to this window is superficial and can be repaired	
305a	double hung w/ wood muntins	good, some chipping	good, vertical blinds attached at top	good, minor moss accumulation	excellent	yes	no	excellent	north		yes

* All parts in excellent condition otherwise unless mentioned

Window #	Window Type	Conditions							Facing Elev.	Comments	Photo
		Paint	Window Parts*	Brick Sill Condition	Hardware	Operability	Dry Rot	Overall			
307a	double hung w/ wood muntins	excellent	good, horizontal blinds attached at top	good, some moss accumulation	excellent	yes, a bit sticky	no	excellent	north		
308a	double hung w/ wood muntins	good, some chipping on interior, extensive chipping on exterior	good, lower 8 panels have been painted white	good, some deterioration of mortar joints	new lock on right, missing left weight cord	yes	no	good	south		yes
309a	double hung w/ wood muntins	good, some chipping	excellent	good, some moss accumulation	excellent	yes, but the top drops when unlocked	no	good	north		yes
310a	stacked wood awning window with muntins	not accessible	not accessible	not accessible	not accessible	not accessible	not accessible	N/A	south	blocked by bookcases and furniture	
310b	stacked wood awning window with muntins	poor, sill w/out paint, deep flaking on exterior casing, interior muntins showing signs of past condensation accumulation	dropped ceiling attached to upper casing, vertical blinds attached	excellent	excellent	yes	no	good	south		yes

* All parts in excellent condition otherwise unless mentioned

Window #	Window Type	Conditions							Facing Elev.	Comments	Photo
		Paint	Window Parts*	Brick Sill Condition	Hardware	Operability	Dry Rot	Overall			
310c	stacked wood awning window with muntins	poor, sill w/out paint, deep flaking on exterior casing, interior muntins showing signs of past condensation accumulation	dropped ceiling attached to upper casing, vertical blinds attached	excellent	excellent	yes	no	good	south		yes
310d	stacked wood awning window with muntins	poor, sill w/out paint, deep flaking on exterior casing, interior muntins showing signs of past condensation accumulation	dropped ceiling attached to upper casing, vertical blinds attached	excellent	excellent	yes	no	good	south		yes
S310a	double hung, rounded arch, 32 pane w/ wood muntins	interior is good with minimal chipping, exterior is very poor with extensive chipping	good, lower portion may be newer construction	excellent	missing pulls	no	no	good	south	This is a double height window and is also qualified as S410a	yes
311a	double hung w/ wood muntins	good, some chipping	good, horizontal blinds attached at top	good moss accumulation	excellent	yes	no	good	north		
312a	double hung w/ wood muntins	good, some chipping	good, horizontal blinds attached at top	good moss accumulation	excellent	yes	no	good	north		

* All parts in excellent condition otherwise unless mentioned

Window #	Window Type	Conditions							Facing Elev.	Comments	Photo
		Paint	Window Parts*	Brick Sill Condition	Hardware	Operability	Dry Rot	Overall			
H319a	double hung 16 pane w/ wood muntins, opening from bottom	interior is good with minimal chipping, exterior is very poor with extensive chipping	excellent	excellent	excellent	no, top falls down if unlocked	no	good	east		yes
320a	double hung w/ wood muntins	good, some chipping	split in case, horizontal blinds attached	good, moss accumulation	excellent	yes	no	excellent	north		yes
321a	double hung w/ wood muntins	good, some chipping	excellent with vertical blinds attached to casement	good, minor moss accumulation	excellent	yes	no	excellent	north		
321b	double hung w/ wood muntins	excellent	excellent with vertical blinds attached to casement	good, some moss accumulation	excellent	not accessible	no	excellent	west		
323a	double hung w/ wood muntins	good, some chipping on interior, extensive chipping on exterior	excellent with vertical blinds attached to casement	good, minor moss accumulation	excellent	yes	no	excellent	west		yes
324a	double hung w/ wood muntins	good, some chipping	good, vertical blinds attached at top, some splitting in case	good, minor moss accumulation	broken cord on left	top sinks, bottom no (painted?)	no	good	east		yes

* All parts in excellent condition otherwise unless mentioned

Window #	Window Type	Conditions							Facing Elev.	Comments	Photo
		Paint	Window Parts*	Brick Sill Condition	Hardware	Operability	Dry Rot	Overall			
325a	double hung w/ wood muntins	good, some chipping on interior, extensive chipping on exterior	split in case, horizontal blinds attached	good, minor moss accumulation	missing pulls	yes	no	good	west		yes
326a	stacked wood awning window with muntins	good, some chipping	dropped ceiling attached to upper casing, vertical blinds attached	excellent	excellent	yes	no	good	east		yes
326b	stacked wood awning window with muntins	good, some chipping	dropped ceiling attached to upper casing, vertical blinds attached	good, minor moss accumulation	excellent	yes	no	good	east		
327a	double hung w/ wood muntins	good, some chipping	good, horizontal blinds attached at top	good, minor moss accumulation	excellent	yes	no	excellent	west		
328a	stacked wood awning window with muntins	excellent interior, severe chipping on exterior	dropped ceiling attached to upper casing, vertical blinds attached	good, minor moss accumulation	excellent	yes	no	excellent	east		

* All parts in excellent condition otherwise unless mentioned

Window #	Window Type	Conditions							Facing Elev.	Comments	Photo
		Paint	Window Parts*	Brick Sill Condition	Hardware	Operability	Dry Rot	Overall			
328b	stacked wood awning window with muntins	excellent	dropped ceiling attached to upper casing, vertical blinds attached	excellent	excellent	yes	no	excellent	east		yes
329a	double hung w/ wood muntins	good, some chipping	excellent, horizontal and vinyl blinds attached	excellent	excellent	yes, but the top drops when unlocked	no	excellent	west		
S330a	double hung, rounded arch, 32 pane w/ wood muntins	good, some chipping	excellent	excellent	broken cord on left	no	no	good	east	This is a double height window and is also qualified as S430a	yes
331a	double hung w/ wood muntins	excellent interior, severe chipping on exterior	good, horizontal blinds attached at top	excellent	excellent	yes, but the top drops when unlocked	no	good	west		
H331a	stacked wood awning window with muntins	excellent	excellent	excellent	pull on upper awning was replaced with another lock	no, locked into place	no	fair	east		yes

* All parts in excellent condition otherwise unless mentioned

Window #	Window Type	Conditions							Facing Elev.	Comments	Photo
		Paint	Window Parts*	Brick Sill Condition	Hardware	Operability	Dry Rot	Overall			
332a	stacked wood awning window with muntins	excellent interior, severe chipping on exterior	dropped ceiling attached to upper casing, vertical blinds attached	excellent	excellent	yes	no	good	east		yes
332b	stacked wood awning window with muntins	excellent interior, severe chipping on exterior	dropped ceiling attached to upper casing, vertical blinds attached	excellent	excellent	yes	no	good	east		
333a	double hung w/ wood muntins	excellent interior, severe chipping on exterior	good, horizontal blinds attached at top	good, some moss accumulation	broken cord on right, no pulls	yes, but the top drops when unlocked	no	good	east		yes
335a	double hung w/ wood muntins	good, some chipping	good, horizontal blinds attached at top, split in jamb	good, some moss accumulation	missing left pull	yes	no	good	west		yes
H336a	double hung 16 pane w/ wood muntins, opening from bottom	excellent	excellent	good, some moss accumulation	excellent, with cord protectors	no, top falls down if unlocked, bottom painted into place	no	fair	east		yes
337a	double hung w/ wood muntins	excellent interior, some chipping on exterior	excellent, horizontal blinds attached	good, minor moss accumulation	excellent	yes, but the top drops when unlocked	no	excellent	west		

* All parts in excellent condition otherwise unless mentioned

Window #	Window Type	Conditions							Facing Elev.	Comments	Photo
		Paint	Window Parts*	Brick Sill Condition	Hardware	Operability	Dry Rot	Overall			
337b	double hung w/ wood muntins	excellent interior, some chipping on exterior	good, horizontal blinds attached at top, crack in stool	good, minor moss accumulation	missing upper left cord	yes, but the top drops when unlocked	no	good	west		yes
338a	double hung 12 pane w/ wood muntins	excellent	all transparent glass replaced with textured or frosted glass	good	excellent, with cord protectors	no, painted into place	no	good	east		yes
339a	double hung w/ wood muntins	good, some chipping	good, some chips and cracks in case	good, some moss accumulation	excellent	yes, but the top drops when unlocked	no	good	west		yes
H340a	stacked wood awning window with muntins	interior is excellent, exterior is good with some chipping	excellent	excellent	excellent	yes	no	excellent	east		yes
341a	double hung w/ wood muntins	good, some chipping on interior, extensive chipping on exterior	good, horizontal blinds attached at top	good, minor moss accumulation	excellent	yes	no	good	west		
342a	stacked wood awning window with muntins	good, some chipping on interior, extensive chipping on exterior	dropped ceiling attached to upper casing, vertical blinds attached	excellent	excellent	yes	no	excellent	east		yes

* All parts in excellent condition otherwise unless mentioned

Window #	Window Type	Conditions							Facing Elev.	Comments	Photo
		Paint	Window Parts*	Brick Sill Condition	Hardware	Operability	Dry Rot	Overall			
342b	stacked wood awning window with muntins	good, some chipping on interior, extensive chipping on exterior	dropped ceiling attached to upper casing, vertical blinds attached	excellent	excellent	yes	no	excellent	east		
343a	double hung w/ wood muntins	good, some chipping on interior, extensive chipping on exterior	good, horizontal blinds attached at top, split in case	excellent	excellent	yes	no	good	west		
344a	stacked wood awning window with muntins	good, some chipping	dropped ceiling attached to upper casing, vertical blinds attached	excellent	excellent	yes	no	excellent	east		
344b	stacked wood awning window with muntins	good, some chipping	dropped ceiling attached to upper casing, vertical blinds attached, cracks on exterior of inner sash	excellent	excellent	yes	no	good	east		yes

* All parts in excellent condition otherwise unless mentioned

Window #	Window Type	Conditions							Facing Elev.	Comments	Photo
		Paint	Window Parts*	Brick Sill Condition	Hardware	Operability	Dry Rot	Overall			
345a	double hung w/ wood muntins	good, some chipping on interior, extensive chipping on exterior	good, horizontal blinds attached at top	good, minor moss accumulation	excellent	yes, top sinks	no	good	west		
346a	stacked wood awning window with muntins	good, some chipping	dropped ceiling attached to upper casing, vertical blinds attached, added strip on stool	good, minor moss accumulation	excellent	yes	no	good	east		yes
346b	stacked wood awning window with muntins	good, some chipping	dropped ceiling attached to upper casing, vertical blinds attached	good, minor moss accumulation	excellent	yes	no	good	east		
347a	double hung w/ wood muntins	good, some chipping	good, vertical blinds attached at top, some splitting in case	good, minor moss accumulation	excellent	yes	no	good	west		yes
348a	stacked wood awning window with muntins	good, some chipping on interior, extensive chipping on exterior	some cracking in the sash	excellent	excellent	yes	no	good	east		

* All parts in excellent condition otherwise unless mentioned

Window #	Window Type	Conditions							Facing Elev.	Comments	Photo
		Paint	Window Parts*	Brick Sill Condition	Hardware	Operability	Dry Rot	Overall			
348b	stacked wood awning window with muntins	good, some chipping on interior, extensive chipping on exterior	some cracking in the sash	excellent	excellent	yes	no	good	east		yes
349a	double hung w/ wood muntins	good, some chipping	good, horizontal blinds attached at top	good, minor moss accumulation, with a chip on one brick edge	missing left weight cord	no	no	good	west		yes
350a	stacked wood awning window with muntins	excellent interior, some chipping on exterior	dropped ceiling attached to upper casing, horizontal blinds attached and some cracking in stool	good	excellent	yes	no	good	east		yes
350b	stacked wood awning window with muntins	excellent interior, some chipping on exterior	dropped ceiling attached to upper casing, horizontal blinds attached	good	excellent	yes	no	good	east		
351a	double hung w/ wood muntins	good, some chipping	good, vertical blinds attached at top	good, minor moss accumulation	missing lock	yes	no	good	west		yes

* All parts in excellent condition otherwise unless mentioned

Window #	Window Type	Conditions							Facing Elev.	Comments	Photo
		Paint	Window Parts*	Brick Sill Condition	Hardware	Operability	Dry Rot	Overall			
352a	stacked wood awning window with muntins	good, some chipping	dropped ceiling attached to upper casing, horizontal blinds attached, sash pulling away from itself	excellent	excellent	yes	no	good	east		yes
352b	stacked wood awning window with muntins	good, some chipping	dropped ceiling attached to upper casing, horizontal blinds attached, sash pulling away from itself	excellent	excellent	yes	no	excellent	east		
353a	double hung w/ wood muntins	good, some chipping	excellent	good, minor moss accumulation	excellent	yes	no	excellent	west		
354a	Picture window with awning, 12 panes and wood muntins	good, some chipping	good	excellent	double lock, no pull above awning	yes	no	good	east		yes

* All parts in excellent condition otherwise unless mentioned

Window #	Window Type	Conditions							Facing Elev.	Comments	Photo
		Paint	Window Parts*	Brick Sill Condition	Hardware	Operability	Dry Rot	Overall			
355a	double hung w/ wood muntins	excellent interior, some chipping on exterior	good, vertical blinds attached at top, small crack in casing	good, some moss accumulation	excellent	yes	no	good	west		yes
356a	double hung w/ wood muntins	poor, sill w/ out paint, deep flaking on exterior casing, interior muntins showing signs of past condensation accumulation	splitting in case and sash, with horizontal blinds attached at top of case	excellent	excellent	yes	no	good	east		yes
357a	double hung w/ wood muntins	good, some chipping	excellent	good, some moss accumulation	missing lock	yes	no	excellent	west		
358a	double hung w/ wood muntins	excellent interior, some chipping on exterior	excellent, horizontal blinds attached	good, some chipping on corners of bricks	excellent	yes	no	excellent	east		yes
359a	double hung w/ wood muntins	good, some chipping	excellent, horizontal blinds attached	good, some moss accumulation	excellent	yes	no	excellent	west		
370a	stacked wood awning window with muntins	excellent interior, some chipping on exterior	dropped ceiling attached to upper casing	excellent	excellent	yes	no	excellent	east		

* All parts in excellent condition otherwise unless mentioned

Window #	Window Type	Conditions							Facing Elev.	Comments	Photo
		Paint	Window Parts*	Brick Sill Condition	Hardware	Operability	Dry Rot	Overall			
370b	stacked wood awning window with muntins	excellent interior, some chipping on exterior	dropped ceiling attached to upper casing	excellent	new lock on lower right	yes	no	excellent	east		yes
S370a	double hung, rounded arch, 32 pane w / wood muntins	interior is good with minimal chipping, exterior is very poor with extensive chipping	good	excellent	good	yes	no	good	east	This is a double height window and is also qualified as S470a	yes
371a	double hung w / wood muntins	good, some chipping	good, horizontal blinds attached at top	good, some moss accumulation	right weight cord broken	no	no	good	west		
H372a	Picture window with awning, 12 panes and wood muntins	excellent	good	good, some moss accumulation	intact non-painted lock and pull with an additional locking mechanism	yes	no	good	east	the new lock is because the old lock's groove no longer holds the original lock in place	yes
373a	double hung w / wood muntins	good, some chipping	good, horizontal blinds attached at top, some splitting in casing	good, some moss accumulation	excellent	yes, but the top drops when unlocked	no	good	west		

* All parts in excellent condition otherwise unless mentioned

Window #	Window Type	Conditions							Facing Elev.	Comments	Photo
		Paint	Window Parts*	Brick Sill Condition	Hardware	Operability	Dry Rot	Overall			
375a	double hung w/ wood muntins	good, some chipping	good, horizontal blinds attached at top, some splitting in casing	good, some moss accumulation	excellent	yes	no	good	west		yes
377a	double hung w/ wood muntins	good, some chipping	good, vertical blinds attached at top	good, minor moss accumulation	excellent	yes, top sinks	no	good	west		
380a	stacked wood awning window with muntins	good, some chipping	dropped ceiling attached to upper casing, horizontal blinds attached	good, minor moss accumulation	excellent	yes	no	excellent	east		
380b	stacked wood awning window with muntins	good, some chipping	dropped ceiling attached to upper casing, horizontal blinds attached	good, minor moss accumulation	excellent	yes	no	excellent	east	attacheemnts remain for unknown object in header	yes
380c	stacked wood awning window with muntins	good, some chipping	dropped ceiling attached to upper casing, horizontal blinds attached	good, minor moss accumulation	excellent	yes	no	excellent	east		

* All parts in excellent condition otherwise unless mentioned

Window #	Window Type	Conditions							Facing Elev.	Comments	Photo
		Paint	Window Parts*	Brick Sill Condition	Hardware	Operability	Dry Rot	Overall			
380d	stacked wood awning window with muntins	good, some chipping	dropped ceiling attached to upper casing, horizontal blinds attached	excellent	new lock on lower right	yes	no	excellent	east		
381a	double hung w/ wood muntins	good, some chipping	good, roll down blinds attached at top of case	good, moss accumulation	excellent	yes	no	good	west		
382a	double hung w/ wood muntins	good, some chipping	good, lower 8 panels have been painted white and urinal is attached to front of case/ stool	excellent	excellent	top window sits on exterior supports for ventilation, bottom is fixed	no	good	east		
383a	double hung w/ wood muntins	good, some chipping	good, horizontal blinds attached at top, some splitting in casing	good, some moss accumulation	both weight cords are broken	no, because of lack of cords	no	good	west		yes
S384a	double hung 16 pane w/ wood muntins, opening from bottom	good, some chipping	good	excellent	good	yes	no	excellent	east		yes

* All parts in excellent condition otherwise unless mentioned

Window #	Window Type	Conditions							Facing Elev.	Comments	Photo
		Paint	Window Parts*	Brick Sill Condition	Hardware	Operability	Dry Rot	Overall			
385a	double hung w/ wood muntins	excellent	good, horizontal blinds attached at top, some splitting in casing	good, minor moss accumulation	excellent	yes, top sinks	no	good	west		
385b	double hung w/ wood muntins	good, some chipping	good, horizontal blinds attached at top, some splitting in casing	good, moss accumulation	excellent	not accessible	no	good	south		
386a	double hung w/ wood muntins	good, some chipping on interior, extensive chipping on exterior	good, blinds attached at top, crack in stool	good, moss accumulation	excellent	yes	no	fair	south		yes
387a	double hung w/ wood muntins	good, some chipping on interior, extensive chipping on exterior	good, horizontal blinds attached at top	good, minor moss accumulation	missing right pull	yes, but the top drops when unlocked, bottom is stuck	no	good	south		yes
387Aa	double hung w/ wood muntins	good, some chipping on interior, extensive chipping on exterior	good, horizontal blinds attached at top	excellent	excellent	yes, top sinks	no	excellent	south		

* All parts in excellent condition otherwise unless mentioned

Window #	Window Type	Conditions							Facing Elev.	Comments	Photo
		Paint	Window Parts*	Brick Sill Condition	Hardware	Operability	Dry Rot	Overall			
388a	stacked wood awning window with muntins	good, some chipping	bottom casing and stool have been removed, and major cracks appear in remaining case	good, minor moss accumulation	excellent	yes	no	fair	north	bottom of casing has been removed and will have to be reconstructed	yes
388b	stacked wood awning window with muntins	good, some chipping	bottom casing and stool have been removed, and major cracks appear in remaining case	good, moss accumulation	excellent	yes	no	fair	north	bottom of casing has been removed and will have to be reconstructed	yes
389a	double hung w/ wood muntins	good, some chipping	good, horizontal blinds attached at top, one glass pane cracked	excellent	excellent	yes, top sinks	no	good	south		yes
H389a	Picture window with awning, 12 panes and wood muntins	excellent	good	good, moss accumulation	good	yes	no	excellent	north		yes

* All parts in excellent condition otherwise unless mentioned

Window #	Window Type	Conditions							Facing Elev.	Comments	Photo
		Paint	Window Parts*	Brick Sill Condition	Hardware	Operability	Dry Rot	Overall			
390a	stacked wood awning window with muntins	excellent	dropped ceiling attached to upper casing, horizontal blinds attached	good, minor moss accumulation	excellent	yes	no	excellent	north		
390b	stacked wood awning window with muntins	excellent	dropped ceiling attached to upper casing, horizontal blinds attached	good, minor moss accumulation	slide lock disabled, new side lock	yes, now operates as a casement window	no	good	north	altered from original configuration	yes
391a	double hung w/ wood muntins	good, some chipping on interior, extensive chipping on exterior	good, horizontal blinds attached at top	good, some spalling of bricks	excellent	yes	no	excellent	south		
392a	stacked wood awning window with muntins	excellent	dropped ceiling attached to upper casing, horizontal blinds attached	good	excellent	yes	no	excellent	north		

* All parts in excellent condition otherwise unless mentioned

Window #	Window Type	Conditions							Facing Elev.	Comments	Photo
		Paint	Window Parts*	Brick Sill Condition	Hardware	Operability	Dry Rot	Overall			
392b	stacked wood awning window with muntins	excellent	dropped ceiling attached to upper casing, horizontal blinds attached	good	excellent	yes	not accessible	excellent	north		
393a	double hung w/ wood muntins	good, some chipping on interior, extensive chipping on exterior	good, horizontal blinds attached at top, a few cracks in glass	good, minor moss accumulation	excellent	yes	no	good	south		
394a	16 pane, double hung w/ wood muntins	excellent	good, lower 8 panels have been painted white	good, some moss accumulation	broken left cord	bottom is non-operable but top sinks 2" resting on unseen exterior supports	no	good	north		yes
395a	double hung w/ wood muntins	good, some chipping on interior, extensive chipping on exterior	good, horizontal blinds attached at top	good, minor moss accumulation	missing left weight cord	yes, top sinks	no	good	south		
397a	double hung w/ wood muntins	good, some chipping on interior, extensive chipping on exterior	good, one muntin severely deteriorated	good, some moss accumulation	both weight cords are broken	yes, top sinks	no	good	south		yes

* All parts in excellent condition otherwise unless mentioned

Window #	Window Type	Conditions							Facing Elev.	Comments	Photo
		Paint	Window Parts*	Brick Sill Condition	Hardware	Operability	Dry Rot	Overall			
397b	double hung w/ wood muntins	good, some chipping	good, horizontal blinds attached at top	good, moss accumulation	missing left weight cord	not accessible	no	good	east		
398a	double hung w/ wood muntins	good, some chipping on interior, extensive chipping on exterior	good, horizontal blinds attached at top, some splitting in casing	good, moss accumulation	excellent	yes	no	good	east		yes
398b	double hung w/ wood muntins	excellent	good, horizontal blinds attached at top	good, some moss accumulation	broken right weight cord	yes	no	good	north		yes
S398a	double hung, rounded arch, 32 pane w/ wood muntins	excellent	casing is cracking at top right and mid-arch	good, some moss accumulation	broken left cord	no	no	good	north	This is a double height window and is also qualified as S498a	yes
401a	stacked wood awning window with muntins	excellent	excellent	excellent	new lock and pull	yes	no	excellent	south	this window appears to have been reconstructed recently	yes
401b	double hung w/ wood muntins	good, some chipping	good, vertical blinds attached at top, some splitting in case	excellent	excellent	yes	no	good	north		yes

* All parts in excellent condition otherwise unless mentioned

Window #	Window Type	Conditions							Facing Elev.	Comments	Photo
		Paint	Window Parts*	Brick Sill Condition	Hardware	Operability	Dry Rot	Overall			
401Aa	double hung w/ wood muntins	poor, sill w/ out paint, deep flaking on exterior casing, interior muntins showing signs of past condensation accumulation	splitting in case, large chunk missing from upper left case	good, some concrete	excellent	not accessible	no	fair	south		yes
401Ab	double hung w/ wood muntins	good, some chipping, some moisture damage on muntins	good, vertical blinds attached at top, some splitting in case	excellent	excellent	yes	no	good	east		
401Ac	double hung w/ wood muntins	good, some chipping	good, vertical blinds attached at top, some splitting in case	excellent	excellent	yes	no	excellent	east		
401Ad	double hung w/ wood muntins	good, some chipping	good, vertical blinds attached at top, some splitting in case	excellent	broken right weight cord	no	no	good	north		yes
H402a	stacked wood awning window with muntins	excellent, dark brown rather than salmon or white	excellent	excellent	new lock and pull	no, taped off	no	excellent	south		yes

* All parts in excellent condition otherwise unless mentioned

Window #	Window Type	Conditions							Facing Elev.	Comments	Photo
		Paint	Window Parts*	Brick Sill Condition	Hardware	Operability	Dry Rot	Overall			
404a	stacked wood awning window with muntins	poor, sill w/out paint, deep flaking on exterior casing, interior muntins showing signs of past condensation accumulation	poor, sash and muntins are damaged (condensation accumulation)	excellent	excellent	yes	yes	fair	south		yes
404b	stacked wood awning window with muntins	poor, sill w/out paint, deep flaking on exterior casing, interior muntins showing signs of past condensation accumulation	poor, sash and muntins are damaged (condensation accumulation)	excellent	excellent	yes	yes	fair	south		yes
405a	double hung w/ wood muntins	good, some chipping	excellent, vertical blinds attached	excellent	excellent	not accessible	no	excellent	north		
406a	double hung w/ wood muntins	good, some chipping on interior, extensive chipping on exterior	good, horizontal blinds attached at top	excellent	new lock	yes	no	excellent	south		
407a	double hung w/ wood muntins	good, some chipping	good, minor splitting in case	excellent	broken right weight cord	no	no	good	north		

* All parts in excellent condition otherwise unless mentioned

Window #	Window Type	Conditions							Facing Elev.	Comments	Photo
		Paint	Window Parts*	Brick Sill Condition	Hardware	Operability	Dry Rot	Overall			
408a	stacked wood awning window with muntins	fair, paint generally in good condition except for sash/muntins showing signs of moisture damage	good, some signs of moisture damage	excellent	excellent	not accessible	no	good	south		
408b	stacked wood awning window with muntins	fair, paint generally in good condition except for sash/muntins showing signs of moisture damage	good, some signs of moisture damage	excellent	excellent	not accessible	yes	fair	south		yes
408c	stacked wood awning window with muntins	fair, paint generally in good condition except for sash/muntins showing signs of moisture damage	good, some signs of moisture damage	excellent	excellent	yes	no	good	south		
408d	stacked wood awning window with muntins	fair, paint generally in good condition except for sash/muntins showing signs of moisture damage	good, some signs of moisture damage	excellent	excellent	yes	no	good	south		
409a	double hung w/ wood muntins	good, some chipping	good, minor splitting in case	good, some moss accumulation	excellent	yes	no	excellent	north		yes
S410a	**see S310a**								south		

* All parts in excellent condition otherwise unless mentioned

Window #	Window Type	Conditions							Facing Elev.	Comments	Photo
		Paint	Window Parts*	Brick Sill Condition	Hardware	Operability	Dry Rot	Overall			
411a	double hung w/ wood muntins	excellent	excellent, roll down blinds attached	excellent	excellent	yes, top sinks	no	excellent	north		
413a	double hung w/ wood muntins	good, some chipping	good amount of splitting in case	excellent	excellent	yes	no	good	north		yes
419a	double hung w/ wood muntins	good, some chipping	good, horizontal blinds attached at top	good, minor moss accumulation	excellent	yes	no	excellent	north		
H419a	**see H319a**								east		
420a	double hung w/ wood muntins	good, some chipping	good, horizontal blinds attached at top	good, minor moss accumulation	excellent	yes	no	excellent	north		
420b	double hung w/ wood muntins	good, some chipping, some moisture damage on muntins	good, horizontal blinds attached at top	excellent	excellent	not accessible	no	good	west		yes
420c	double hung w/ wood muntins	good, some chipping, some moisture damage on muntins	good, horizontal blinds attached at top, cracking in exterior sash	excellent	excellent	yes	no	good	west		yes

* All parts in excellent condition otherwise unless mentioned

Window #	Window Type	Conditions							Facing Elev.	Comments	Photo
		Paint	Window Parts*	Brick Sill Condition	Hardware	Operability	Dry Rot	Overall			
422a	double hung w/ wood muntins	good, some chipping	good, lower 8 panels have been painted white	not accessible	missing left pull	top window sits on exterior supports for ventilation, bottom is fixed	not accessible	good	east	restroom	
423a	double hung w/ wood muntins	good, some chipping	good, horizontal blinds attached at top, some splitting in casing	good, minor moss accumulation	excellent	not accessible	no	good	west		yes
424a	stacked wood awning window with muntins	good, some chipping, some moisture damage on muntins	signs of moisture damage on sash and muntins	excellent	excellent	yes	no	good	east		
424b	stacked wood awning window with muntins	good, some chipping, some moisture damage on muntins	signs of moisture damage on sash and muntins	excellent	excellent	yes	no	good	east		
425a	double hung w/ wood muntins	good, some chipping	good, horizontal blinds attached at top, some splitting in casing	excellent	excellent	yes	no	good	west		

* All parts in excellent condition otherwise unless mentioned

Window #	Window Type	Conditions							Facing Elev.	Comments	Photo
		Paint	Window Parts*	Brick Sill Condition	Hardware	Operability	Dry Rot	Overall			
425b	double hung w/ wood muntins	good, some chipping	good, horizontal blinds attached at top, some splitting in casing	excellent	excellent	yes	no	good	west		
426a	stacked wood awning window with muntins	good, some chipping	good, vertical blinds attached at top, crack in stool	excellent	no pull	not accessible	no	fair	east		yes
426b	stacked wood awning window with muntins	good, some chipping	good, vertical blinds attached at top	excellent	excellent	yes	no	good	east		
427a	double hung w/ wood muntins	good, some chipping	splitting in case, chipping in sash and muntins	excellent	right weight cord needs to be replaced	yes	no	good	west		yes
H427a	stacked wood awning window with muntins	excellent, dark brown rather than salmon or white	excellent, shared casement with fire door	excellent	excellent	no, painted into place	no	good	east		yes
428a	stacked wood awning window with muntins	good, some chipping on interior, extensive chipping on exterior	good, vertical blinds attached at top	excellent	excellent	yes	no	excellent	east		

* All parts in excellent condition otherwise unless mentioned

Window #	Window Type	Conditions							Facing Elev.	Comments	Photo
		Paint	Window Parts*	Brick Sill Condition	Hardware	Operability	Dry Rot	Overall			
428b	stacked wood awning window with muntins	good, some chipping on interior, extensive chipping on exterior	good, vertical blinds attached at top	excellent	excellent	yes	no	excellent	east		
429a	not accessible	not accessible	not accessible	not accessible	not accessible	not accessible	not accessible	not accessible	west		
S430	**see S330a**								east		
431a	double hung w/ wood muntins	good, some chipping on interior, extensive chipping on exterior	good, roll down blinds attached at top of case, some splitting in case	good, minor moss accumulation	excellent	no	no	good	west		yes
H432a	double hung 12 pane w/ wood muntins	excellent, dark brown rather than salmon or white, exterior has some chipping	excellent, shared casement with fire door	excellent	missing pull	no, painted into place	no	good	east		yes
433a	double hung w/ wood muntins	good, some chipping on interior, extensive chipping on exterior	good, vertical blinds attached at top, some splitting in case	excellent	excellent	yes	no	good	west		yes

* All parts in excellent condition otherwise unless mentioned

Window #	Window Type	Conditions							Facing Elev.	Comments	Photo
		Paint	Window Parts*	Brick Sill Condition	Hardware	Operability	Dry Rot	Overall			
435a	double hung w/ wood muntins	good, some chipping on interior, extensive chipping on exterior	some splitting in case, also signs of past condensation accumulation on the lower muntins	excellent	excellent	yes	no	good	west		yes
441a	double hung w/ wood muntins	good, some chipping	good, horizontal blinds attached at top, one glass pane cracked	excellent	excellent	yes	no	excellent	west		
H442a	stacked wood awning window with muntins	excellent, dark brown rather than salmon or white, exterior has some chipping	excellent	excellent	pull is of a different sort than the rest	no, painted into place	no	good	east		yes
443a	double hung w/ wood muntins	good, some chipping	good, horizontal blinds attached at top	excellent	excellent	not accessible	no	excellent	west		
443b	double hung w/ wood muntins	good, some chipping	good, horizontal blinds attached at top, some splitting in casing	excellent	excellent	not accessible	no	good	west		

* All parts in excellent condition otherwise unless mentioned

Window #	Window Type	Conditions							Facing Elev.	Comments	Photo
		Paint	Window Parts*	Brick Sill Condition	Hardware	Operability	Dry Rot	Overall			
444a	stacked wood awning window with muntins	good, some chipping on interior, extensive chipping on exterior	good, horizontal blinds attached at top, some splitting in casing	excellent	excellent	yes	no	good	east		
444b	stacked wood awning window with muntins	good, some chipping on interior, extensive chipping on exterior	good, horizontal blinds attached at top, some splitting in casing	excellent	excellent	yes	no	good	east		
445a	double hung w/ wood muntins	good, some chipping	good, horizontal blinds attached at top, some signs on past condensation accumulation	good, some moss accumulation	excellent	not accessible	no	good	west		
451a	double hung w/ wood muntins	excellent interior, some chipping on exterior	good, vertical blinds attached at top, some splitting in case	good, minor moss accumulation	left weight cord broken	no	no	good	west		

* All parts in excellent condition otherwise unless mentioned

Window #	Window Type	Conditions							Facing Elev.	Comments	Photo
		Paint	Window Parts*	Brick Sill Condition	Hardware	Operability	Dry Rot	Overall			
446a	stacked wood awning window with muntins	good, some chipping, some moisture damage on muntins	good, vertical blinds attached at top	excellent	pull on upper awning broken	yes	no	good	east		
446b	stacked wood awning window with muntins	good, some chipping, some moisture damage on muntins	good, vertical blinds attached at top	excellent	excellent	yes	no	good	east		
448a	stacked wood awning window with muntins	good, some chipping, some moisture damage on muntins	good, some signs of moisture damage	excellent	excellent	yes	no	fair	east		yes
448b	stacked wood awning window with muntins	good, some chipping, some moisture damage on muntins	good, some signs of moisture damage	excellent	excellent	yes	no	fair	east		
450a	stacked wood awning window with muntins	good, some chipping, some moisture damage on muntins	good, some signs of moisture damage	excellent	excellent	not accessible	no	good	east		
450b	stacked wood awning window with muntins	good, some chipping, some moisture damage on muntins	good, some signs of moisture damage	excellent	excellent	not accessible	no	good	east		

* All parts in excellent condition otherwise unless mentioned

Window #	Window Type	Conditions							Facing Elev.	Comments	Photo
		Paint	Window Parts*	Brick Sill Condition	Hardware	Operability	Dry Rot	Overall			
452a	stacked wood awning window with muntins	good, some chipping	good, vertical blinds attached at top	excellent	excellent	yes	no	excellent	east		
452b	stacked wood awning window with muntins	good, some chipping	good, vertical blinds attached at top	excellent	new pull on upper awning	yes	no	excellent	east		
453a	double hung w/ wood muntins	good, some chipping on interior, extensive chipping on exterior	good, horizontal blinds attached at top	excellent	no lock	yes	no	excellent	west		
453b	double hung w/ wood muntins	good, some chipping on interior, extensive chipping on exterior	good, horizontal blinds attached at top	excellent	excellent	not accessible	no	good	west		
454a	stacked wood awning window with muntins	good, some chipping	good, some signs of moisture damage	excellent	excellent	yes	no	excellent	east		yes
454b	stacked wood awning window with muntins	good, some chipping	excellent	excellent	excellent	yes	no	excellent	east		

* All parts in excellent condition otherwise unless mentioned

Window #	Window Type	Conditions							Facing Elev.	Comments	Photo
		Paint	Window Parts*	Brick Sill Condition	Hardware	Operability	Dry Rot	Overall			
455a	double hung w/ wood muntins	excellent interior, some chipping on exterior	excellent, with scars from lock hitting muntins	excellent	excellent	yes	no	excellent	west		
H455a	stacked wood awning window with muntins	excellent, dark brown rather than salmon or white, exterior has some chipping	excellent	excellent	excellent	yes	no	excellent	east		yes
456a	double hung w/ wood muntins	good, some chipping	good, horizontal blinds attached at top	excellent	excellent	yes	no	excellent	east		
457a	double hung w/ wood muntins	good, some chipping	good, horizontal blinds attached at top, some splitting in casing	excellent	excellent	not accessible	no	excellent	west		
457b	double hung w/ wood muntins	good, some chipping	good, horizontal blinds attached at top, cracking in stool	excellent	both weight cords are broken	no	no	good	west		yes
458a	double hung w/ wood muntins	good, some chipping on interior, extensive chipping on exterior	good, horizontal blinds attached at top, some splitting in casing	excellent	excellent	yes	no	good	east		

* All parts in excellent condition otherwise unless mentioned

Window #	Window Type	Conditions							Facing Elev.	Comments	Photo
		Paint	Window Parts*	Brick Sill Condition	Hardware	Operability	Dry Rot	Overall			
459a	double hung w/ wood muntins	good, some chipping	good, horizontal blinds attached at top, some splitting in casing	excellent	excellent	yes	no	good	west		
470a	stacked wood awning window with muntins	good, some chipping on interior, extensive chipping on exterior, with signs of past condensation accumulation	good, some signs of moisture damage	excellent	excellent	yes	no	good	east		
470b	stacked wood awning window with muntins	good, some chipping on interior, extensive chipping on exterior, with signs of past condensation accumulation	good, horizontal blinds attached at top	excellent	excellent	yes	no	excellent	east		
S470a	**see S370a**								east		
471a	double hung w/ wood muntins	good, some chipping	excellent	excellent	excellent	not accessible	no	excellent	west		
H472a	stacked wood awning window with muntins	good, some chipping	excellent	excellent	excellent	yes	no	excellent	east		yes

* All parts in excellent condition otherwise unless mentioned

Window #	Window Type	Conditions							Facing Elev.	Comments	Photo
		Paint	Window Parts*	Brick Sill Condition	Hardware	Operability	Dry Rot	Overall			
473a	double hung w/ wood muntins	good, some chipping	good, minor splitting in case	excellent	excellent	yes	no	good	west		
474a	stacked wood awning window with muntins	good, some chipping, some moisture damage on muntins	cracking/ chipping in exterior sash	excellent	excellent	yes	no	good	east		
474b	stacked wood awning window with muntins	severe flaking seems to be caused by water /condensation	cracking/ chipping in exterior sash	excellent	excellent	yes	no	good	east		yes
475a	double hung w/ wood muntins	good, some chipping	excellent	excellent	excellent	yes	no	excellent	west		
476a	stacked wood awning window with muntins	excellent interior, some chipping on exterior	excellent	excellent	excellent (new chains)	yes	no	excellent	east		
476b	stacked wood awning window with muntins	excellent interior, some chipping on exterior	excellent, some cracking on exterior sash	excellent	excellent	yes	no	excellent	east		
477a	double hung w/ wood muntins	good, some chipping	good amount of splitting in case	excellent	excellent	yes	no	good	west		yes

* All parts in excellent condition otherwise unless mentioned

Window #	Window Type	Conditions							Facing Elev.	Comments	Photo
		Paint	Window Parts*	Brick Sill Condition	Hardware	Operability	Dry Rot	Overall			
478a	double hung w/ wood muntins	good, some chipping	good, lower 8 panels have been painted white	excellent	excellent	yes, sticky	no	good	east	restroom - wood panels needed for privacy	yes
480a	double hung w/ wood muntins	excellent interior, some chipping on exterior	good, minor splitting in case	excellent	broken left weight cord	not accessible	no	good	west		
483a	double hung w/ wood muntins	excellent	excellent, horizontal blinds attached	excellent	excellent	not accessible	no	excellent	west		
483b	double hung w/ wood muntins	excellent	excellent, horizontal blinds attached	excellent	excellent	yes	no	excellent	west		
483c	double hung w/ wood muntins	excellent interior, some chipping on exterior	excellent, horizontal blinds attached	good, some moss accumulation	excellent	yes	no	excellent	south		
484a	double hung w/ wood muntins	good, some chipping on interior, extensive chipping on exterior	excellent, horizontal blinds attached, a few dents	good, some moss accumulation	excellent	yes	no	good	south		yes
S484a	double hung w/ wood muntins	good, some chipping	fair	excellent	excellent	yes	no	good	east	scars from replaced sections and lock damage seen on casement	yes
485a	double hung w/ wood muntins	good, some chipping on interior, extensive chipping on exterior	good, minor splitting in case	excellent	excellent	yes	no	good	south		

* All parts in excellent condition otherwise unless mentioned

Window #	Window Type	Conditions							Facing Elev.	Comments	Photo
		Paint	Window Parts*	Brick Sill Condition	Hardware	Operability	Dry Rot	Overall			
487a	double hung w/ wood muntins	good, some chipping on interior, extensive chipping on exterior	chips and cracks in stool and lower muntins/sash	excellent	excellent	yes	no	good	south		yes
488a	stacked wood awning window with muntins	excellent	excellent, horizontal blinds attached	excellent	excellent	yes	no	excellent	north		
488b	stacked wood awning window with muntins	excellent	excellent, horizontal blinds attached	good, minor moss accumulation	excellent	yes	no	excellent	north		
489a	double hung w/ wood muntins	good, some chipping on interior, extensive chipping on exterior	major splitting in meeting rail	excellent	excellent	no	no	fair	south		yes
H489a	stacked wood awning window with muntins	excellent	excellent	good, some moss accumulation	excellent	yes	no	excellent	north		yes
490a	stacked wood awning window with muntins	excellent	excellent, horizontal blinds attached	excellent	excellent	yes	no	excellent	north		

* All parts in excellent condition otherwise unless mentioned

Window #	Window Type	Conditions							Facing Elev.	Comments	Photo
		Paint	Window Parts*	Brick Sill Condition	Hardware	Operability	Dry Rot	Overall			
490b	stacked wood awning window with muntins	excellent	joined at the middle, opening at the right	excellent	slider and new lock at middle right	yes	no	good/fair	north	this window was originally a stacked awning configuration, and has been sealed at the meeting to now operate as a casement window	yes
491a	double hung w/ wood muntins	good, some chipping on interior, extensive chipping on exterior, with signs of past condensation accumulation	some splitting in case, also signs of past condensation accumulation on the lower muntins	excellent	excellent	yes	no	good	south		yes
492a	stacked wood awning window with muntins	good, some chipping	good, horizontal blinds attached at top	excellent	excellent	yes	no	excellent	north		
492b	stacked wood awning window with muntins	excellent	good, horizontal blinds attached at top	excellent	excellent	yes	no	excellent	north		

* All parts in excellent condition otherwise unless mentioned

Window #	Window Type	Conditions							Facing Elev.	Comments	Photo
		Paint	Window Parts*	Brick Sill Condition	Hardware	Operability	Dry Rot	Overall			
493a	double hung w/ wood muntins	good, some chipping on interior, extensive chipping on exterior, with signs of past condensation accumulation	some splitting in case, also signs of past condensation accumulation on the lower muntins	excellent	excellent	yes	no	good	south		
494a	double hung w/ wood muntins	good, some chipping	all panels painted white, urinal attached to case at lower right	not accessible	wood blocks around weight cords, right weight cord broken	top window sits on exterior supports for ventilation, bottom is fixed	not accessible	fair	north		yes
497a	double hung w/ wood muntins	good, some chipping on interior, extensive chipping on exterior	excellent, horizontal blinds attached	excellent	missing lock, broken left weight cord	no	no	good	south		
497b	double hung w/ wood muntins	good, some chipping on interior, extensive chipping on exterior	excellent, horizontal blinds attached	excellent	excellent	yes	no	excellent	south		
497c	double hung w/ wood muntins	good, some chipping on interior, extensive chipping on exterior	excellent, horizontal blinds attached	good, minor moss accumulation	broken lach for lock	yes	no	excellent	east		

* All parts in excellent condition otherwise unless mentioned

Window #	Window Type	Conditions							Facing Elev.	Comments	Photo
		Paint	Window Parts*	Brick Sill Condition	Hardware	Operability	Dry Rot	Overall			
498a	double hung w/ wood muntins	good, some chipping on interior, extensive chipping on exterior	excellent, horizontal blinds attached	good, minor moss accumulation	excellent	yes	no	good	east		
498b	double hung w/ wood muntins	good, some chipping on interior, extensive chipping on exterior	splitting in case	excellent	excellent	not accessible	no	good	north		
S498a	**see S398a**										
Sky1	Skylight domed	lots of flaking on interior	fair	NA	none	no	not able to thoroughly assess	good		peeling interior paint indicates possible water infiltration or condensation accumulation. Opening covered on interior with vent and dropped ceiling.	yes
Sky2	Skylight domed	excellent	fair	NA	none	no	not able to thoroughly assess	excellent			
Sky3	Skylight straight gable	excellent	fair	NA	none	no	not able to thoroughly assess	good		some mildew at joints, sealant compromised	
Sky4	Skylight domed	excellent	fair	NA	none	no	not able to thoroughly assess	excellent			

* All parts in excellent condition otherwise unless mentioned

Window #	Window Type	Conditions							Facing Elev.	Comments	Photo
		Paint	Window Parts*	Brick Sill Condition	Hardware	Operability	Dry Rot	Overall			
Sky5	Skylight domed	excellent	fair	NA	none	no	not able to thoroughly assess	excellent			
Sky6	Skylight domed	excellent	fair	NA	none	no	not able to thoroughly assess	excellent			
Sky7	Skylight straight gable	excellent	fair	NA	none	no	not able to thoroughly assess	fair to poor		large amount of mildew at joints, sealant compromised	yes
Sky8	Skylight domed	excellent	fair	NA	none	no	not able to thoroughly assess	excellent			
Sky9	Skylight domed	lots of flaking on interior	fair	NA	none	no	not able to thoroughly assess	good		peeling interior paint indicates possible water infiltration or condensation accumulation. Opening enclosed by dropped ceiling.	
Sky10	Skylight domed	excellent	fair	NA	none	no	not able to thoroughly assess	excellent			yes
Sky11	Skylight domed	excellent	fair	NA	none	no	not able to thoroughly assess	good		peeling interior paint indicates possible water infiltration or condensation accumulation.	

* All parts in excellent condition otherwise unless mentioned

Window #	Window Type	Conditions							Facing Elev.	Comments	Photo
		Paint	Window Parts*	Brick Sill Condition	Hardware	Operability	Dry Rot	Overall			
Sky12	Skylight domed	lots of flaking on interior	fair	NA	none	no	not able to thoroughly assess	excellent		peeling interior paint indicates possible water infiltration or condensation accumulation.	



30Ab ^



28Aa ^



30Aa ^



^ 152Ba



178c ^



170a >



^ 202b



^ 274a



^ 204b



^ S290a



^ 208a



^ 204a





^ 304a



^ 310b



^ H331a



< 344b



308a >





^ 404a



413a ^



4



426a >



^ Sky #7



Sky #1 ^



^ Sky #7

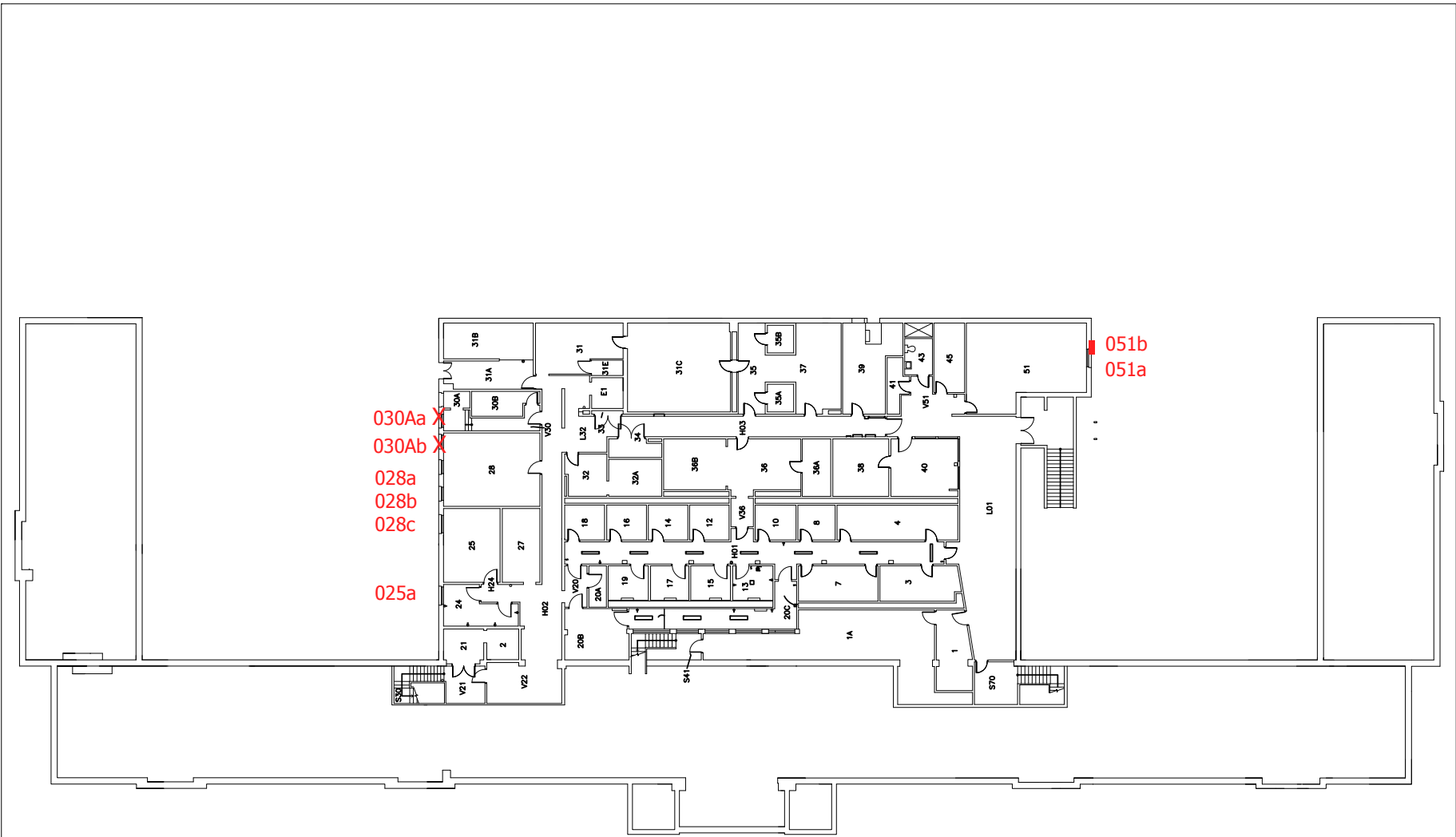


^ Sky #7



Sky #1 ^





BASEMENT FLOOR PLAN



FEET 16 32

SHEET
1 OF 7

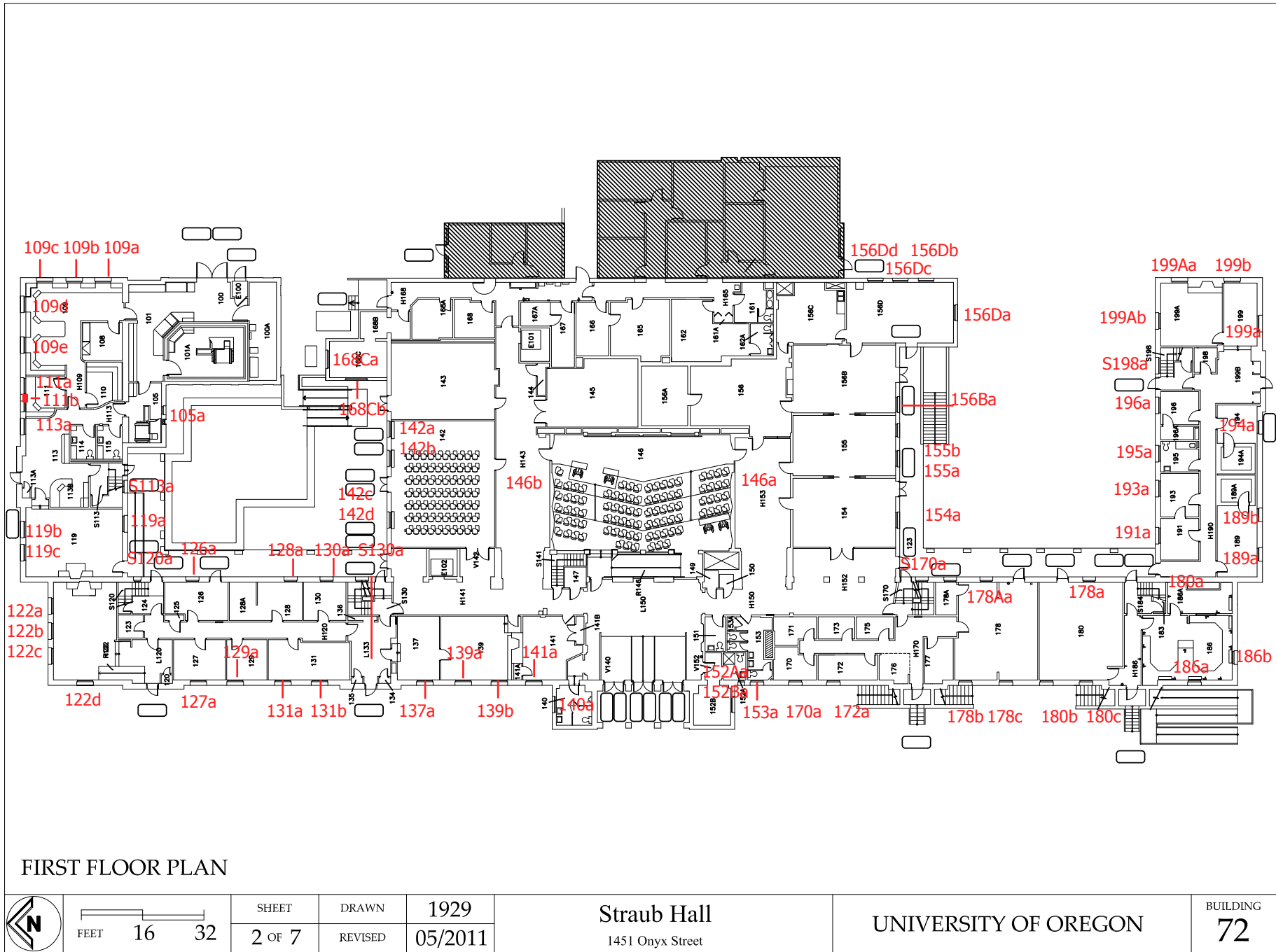
DRAWN
REVISED

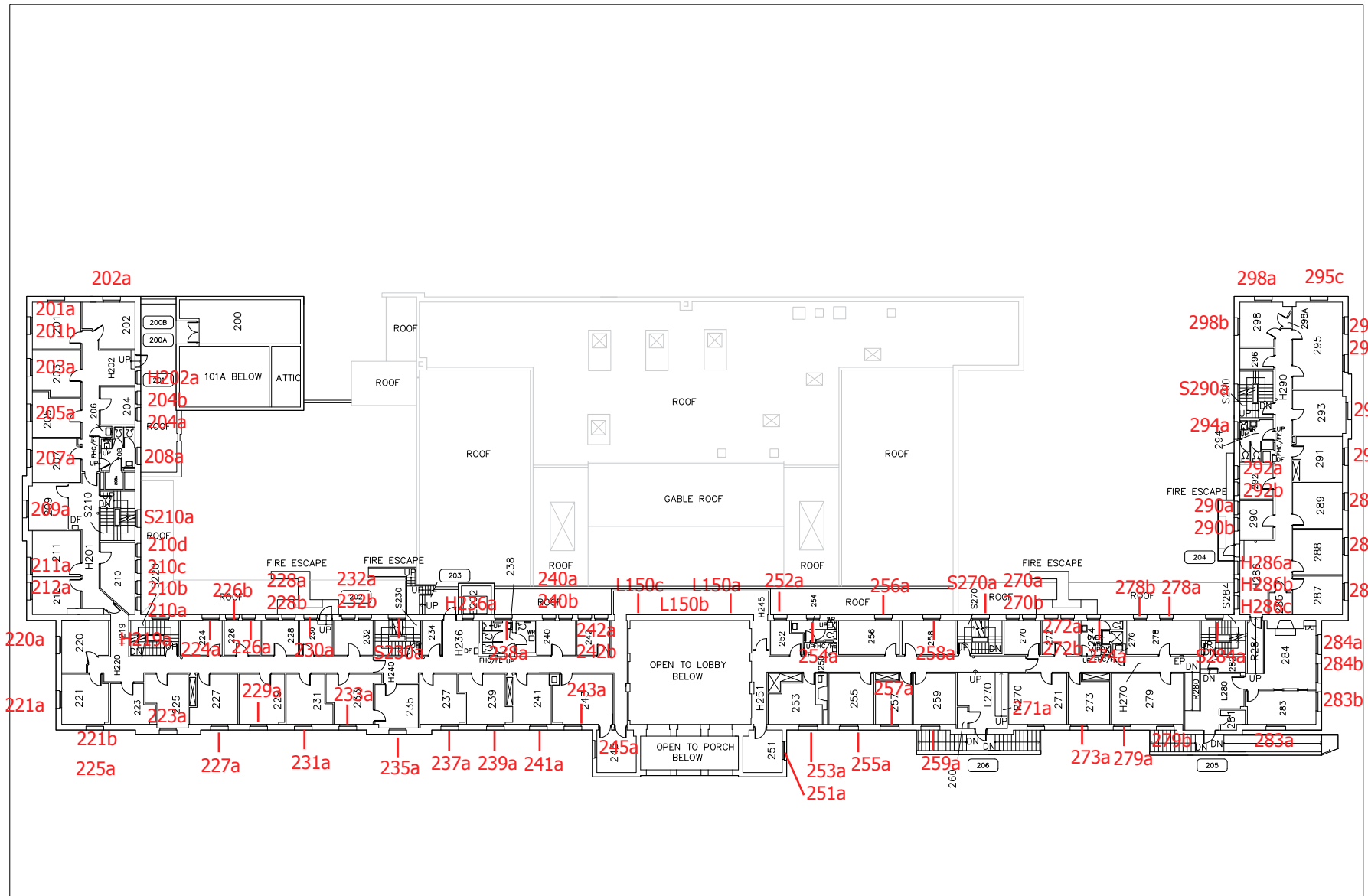
1929
05/2011

Straub Hall
1451 Onyx Street

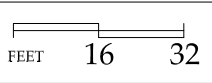
UNIVERSITY OF OREGON

BUILDING
72





SECOND FLOOR PLAN

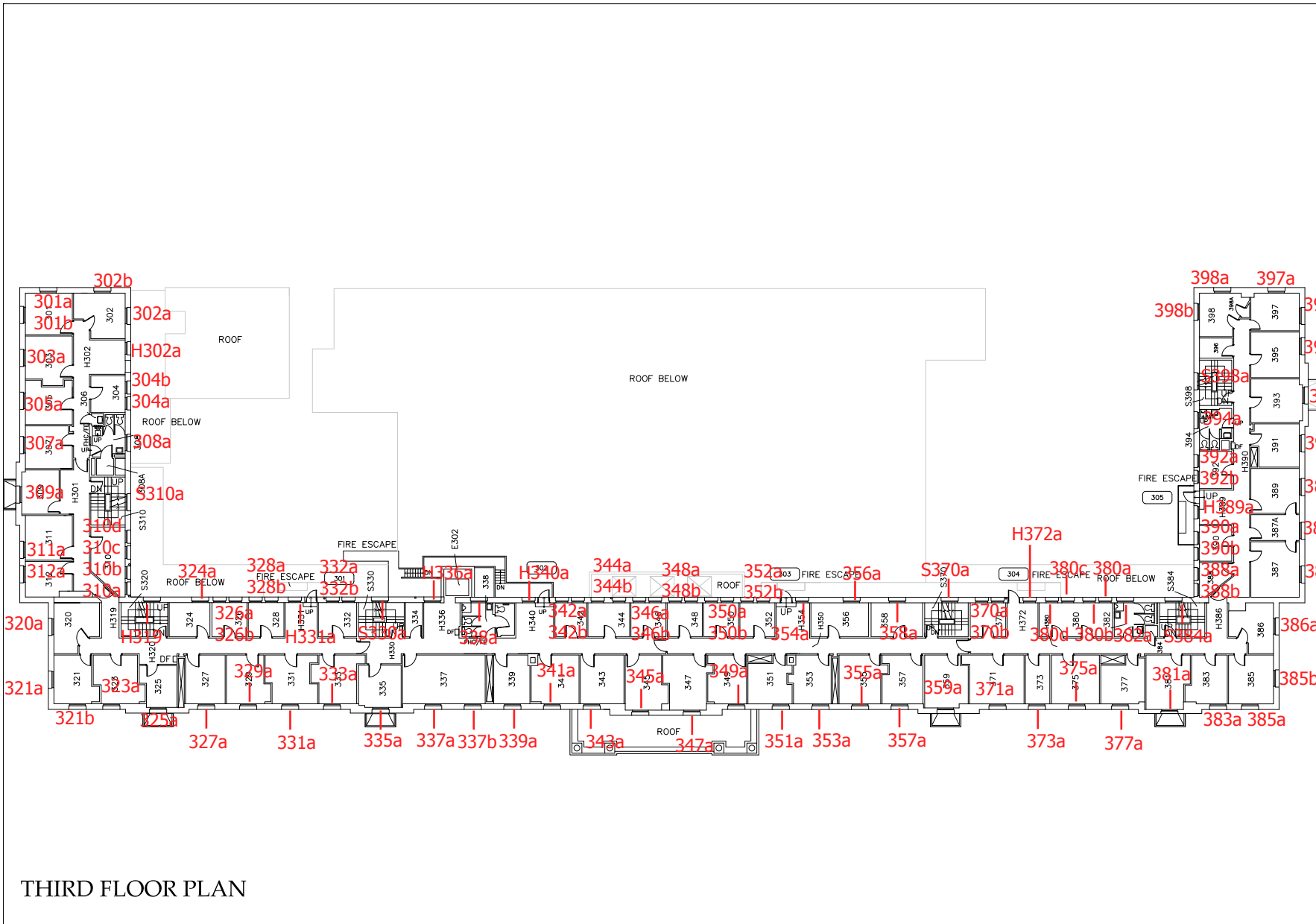


SHEET	DRAWN	1929
3 OF 7	REVISED	05/09



Straub Hall
1451 Onyx Street

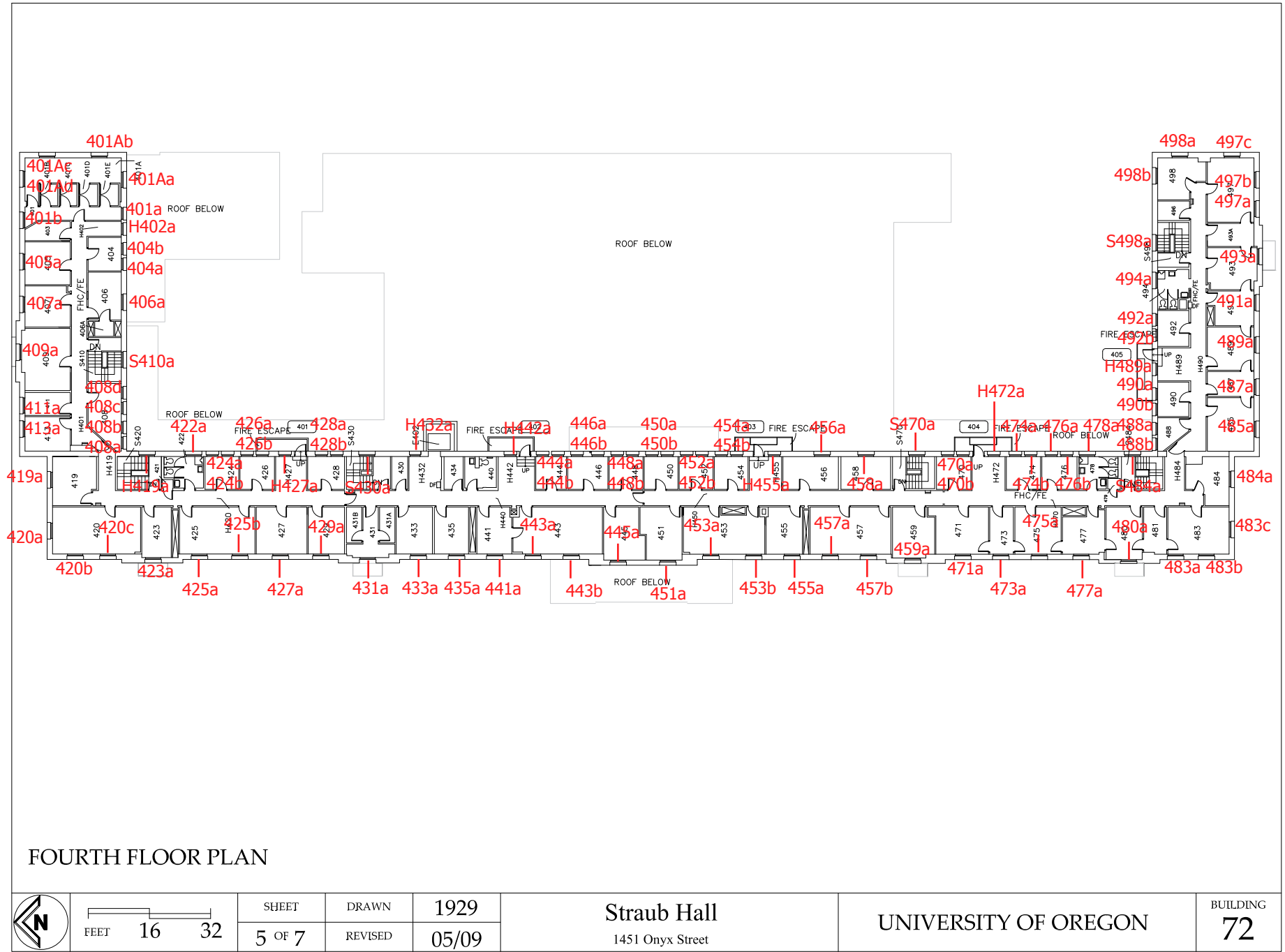
UNIVERSITY OF OREGON

BUILDING
72



THIRD FLOOR PLAN

		SHEET	DRAWN	1929	Straub Hall 1451 Onyx Street	UNIVERSITY OF OREGON	BUILDING
		4 OF 7	REVISED	05/09			72



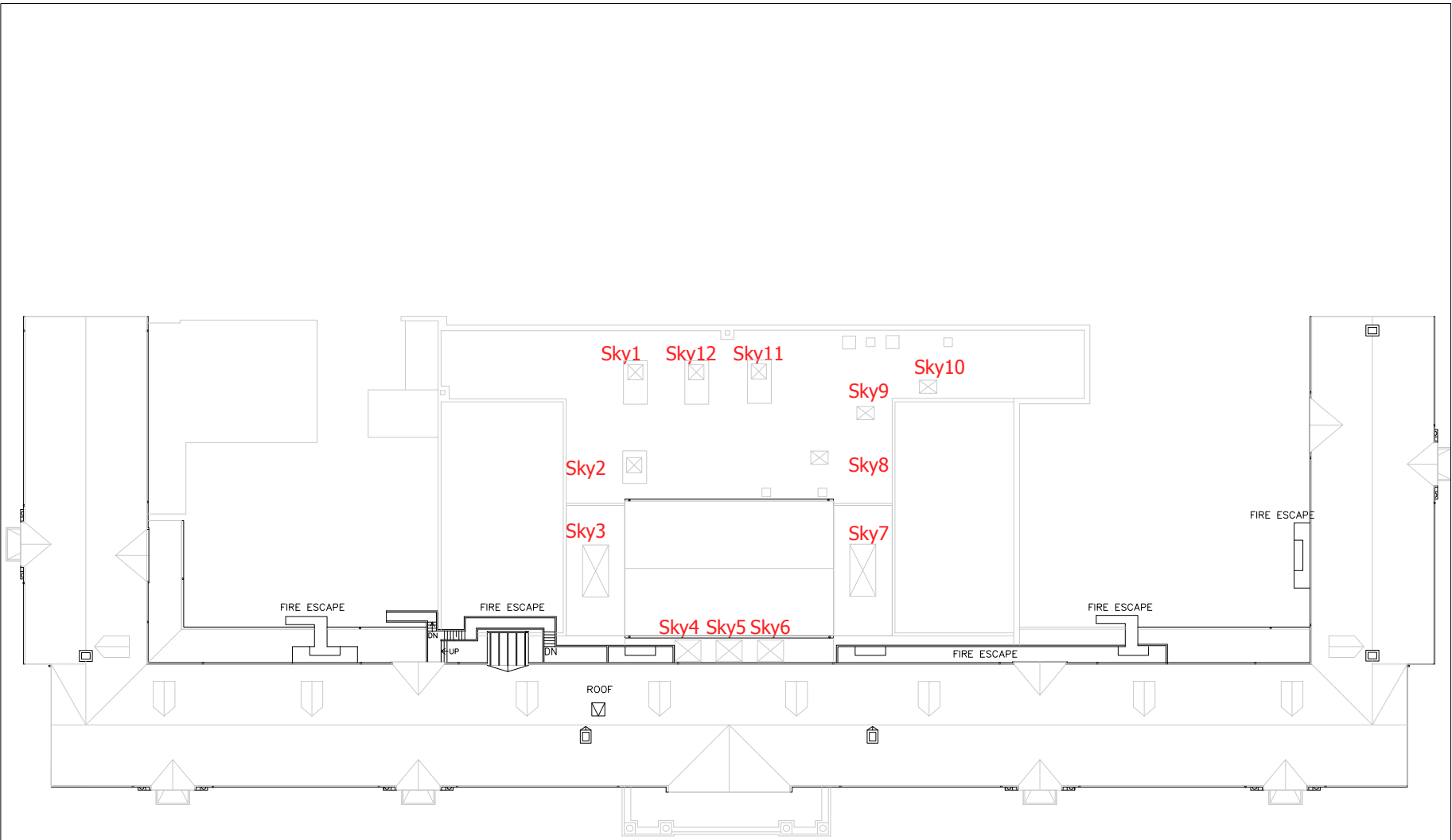
FEET 16 32

SHEET	DRAWN	1929
5 OF 7	REVISED	05/09

Straub Hall
1451 Onyx Street

UNIVERSITY OF OREGON

BUILDING
72



ROOF PLAN



FEET 16 32

SHEET	DRAWN	1929
7 OF 7	REVISED	09/07

Straub Hall
1451 Onyx Street

UNIVERSITY OF OREGON

BUILDING
72