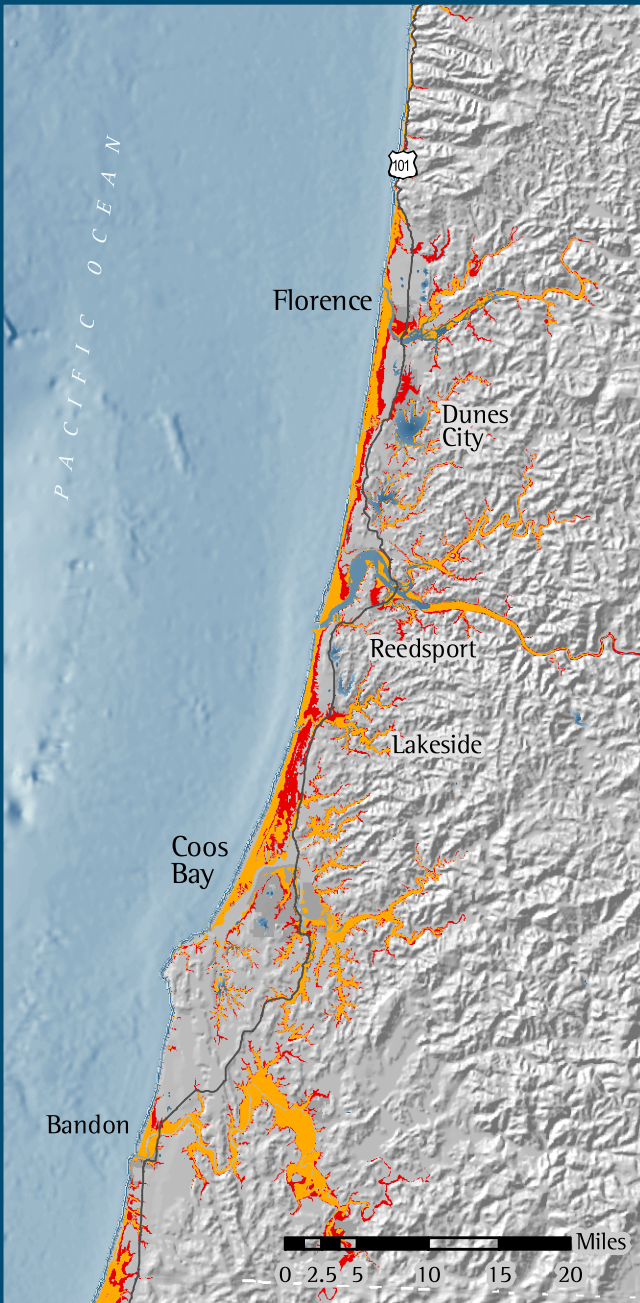
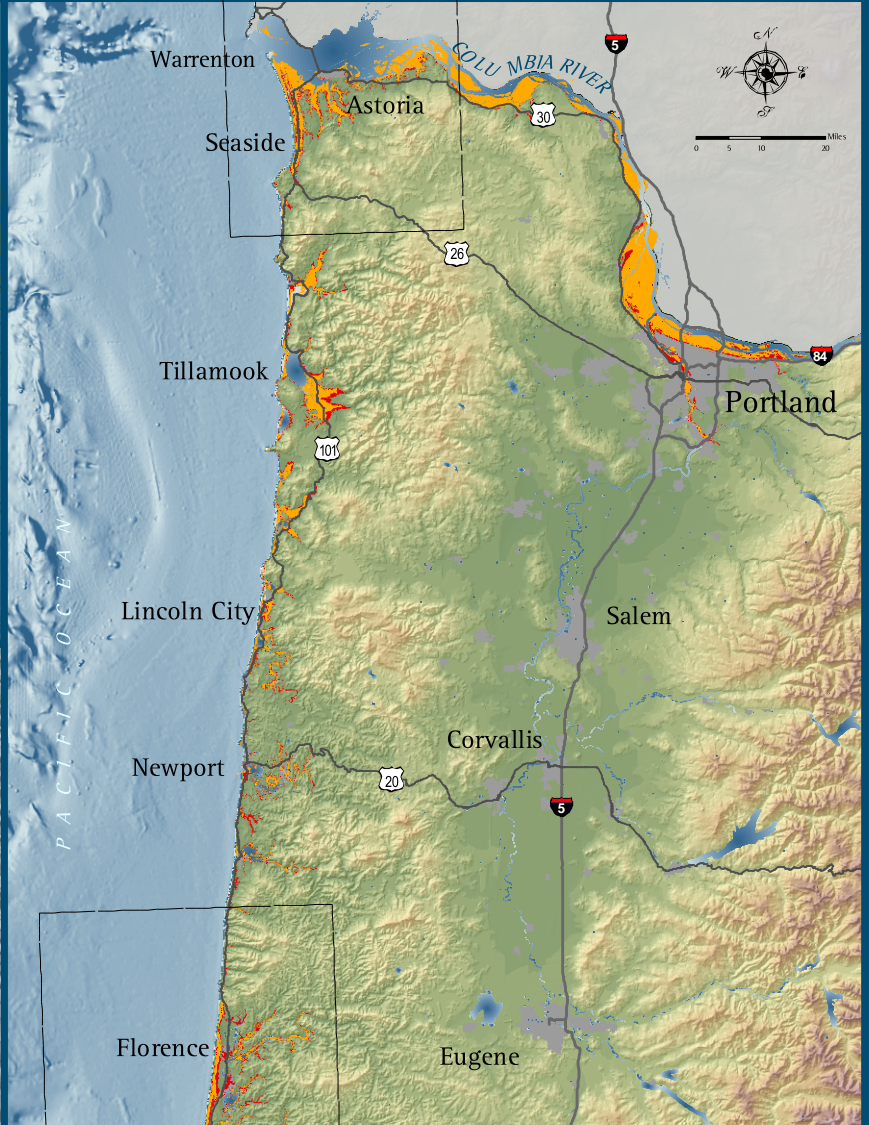
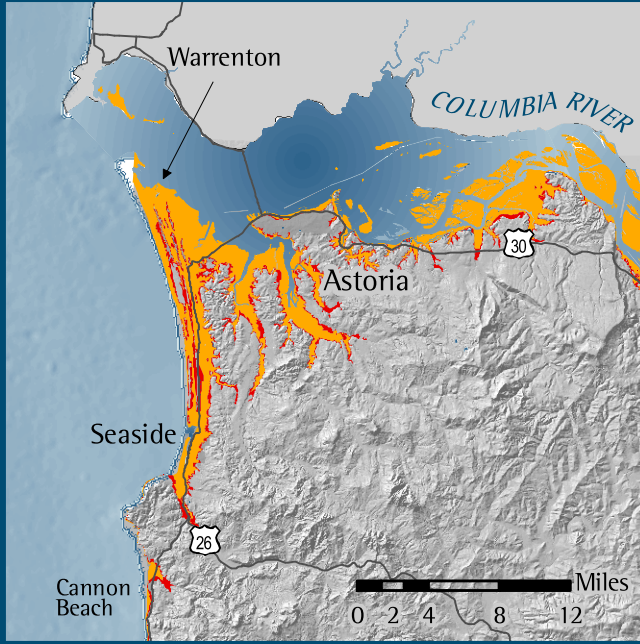


# POTENTIAL IMPACTS OF CATASTROPHIC SEA LEVEL RISE ON OREGON: COLLAPSE OF ANTARCTIC AND GREENLAND ICE SHEETS



**Legend**

- Area Affected by Sea Level Rise
  - 26.4 feet rise
  - 47.9 feet rise
- Key Elements
  - Cities
  - Major Highways
  - Water Bodies

This map shows the potential inundation of Oregon's coastline caused by the complete melting of two polar ice masses, a possible consequence of uncontrolled global warming. The complete melting of the West Antarctic Ice Sheet (sea level rise = 26 feet) is shown in yellow; the additional inundation due to complete melting of the Greenland Ice Sheet (additional sea level rise = 21 feet) is shown in red. The map illustrates the extent of coastal and low-lying riparian land vulnerable to levels of sea level rise considered possible under abrupt climate change scenarios. It is not meant to depict a mechanism or a sequence of catastrophic inundation, or to propose a time frame over which such inundation could occur.

Affected Area	26.4 foot rise	47.9 foot rise
Feature	26.4 foot rise	47.9 foot rise
Total affected area (acres)	276,815	378,537
Urban areas (acres)	27,935	41,203
Affected population	50,255	92,880

Miles of linear features affected	26.4 foot rise	47.9 foot rise
Feature	26.4 foot rise	47.9 foot rise
miles of Highway 101	70.39	122.33
miles of major roads and highways	310.26	570.72
miles of minor roads	1,328.96	2,173.30
miles of utility lines	44.11	70.89
miles of railway	276.62	522.49

All spatial analysis conducted and map composed by Ecotrust for Resource Innovation. This map will change over time without notice. Ecotrust assumes no responsibility or legal liability in relation to the accuracy, completeness, reliability, timeliness, usefulness, or the availability for lawful use and copying of this map or any information available on it.