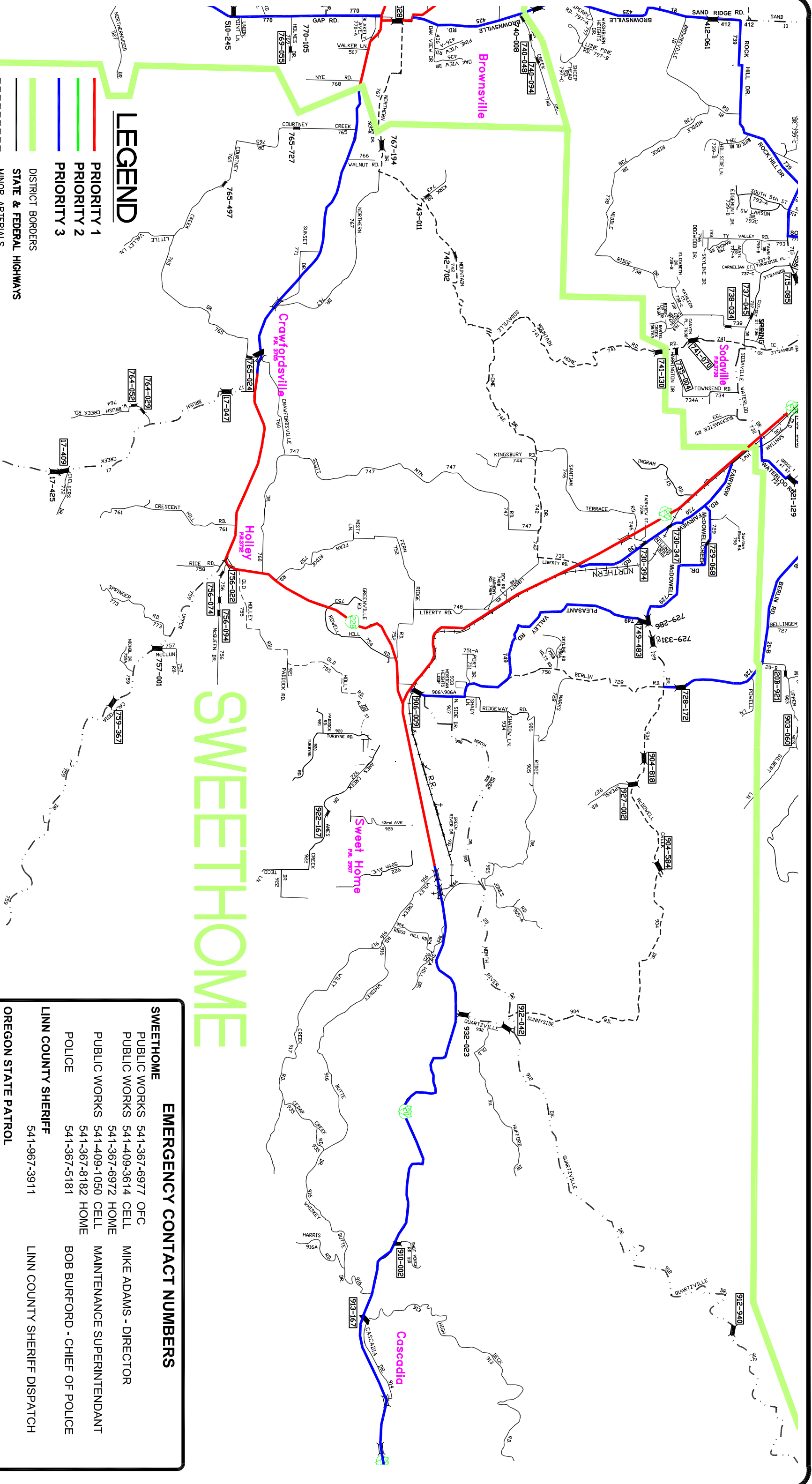


SWEETHOME



LEGEND

- PRIORITY 1
- PRIORITY 2
- PRIORITY 3

- DISTRICT BORDERS
- STATE & FEDERAL HIGHWAYS
- MINOR ARTERIALS
- MAJOR COLLECTORS
- MINOR COLLECTORS
- LOCAL ROADS
- RAILROADS

INTERSTATE HIGHWAYS

FEDERAL HIGHWAYS

LOCAL ROAD NUMBERS

COUNTY BRIDGE NUMBERS

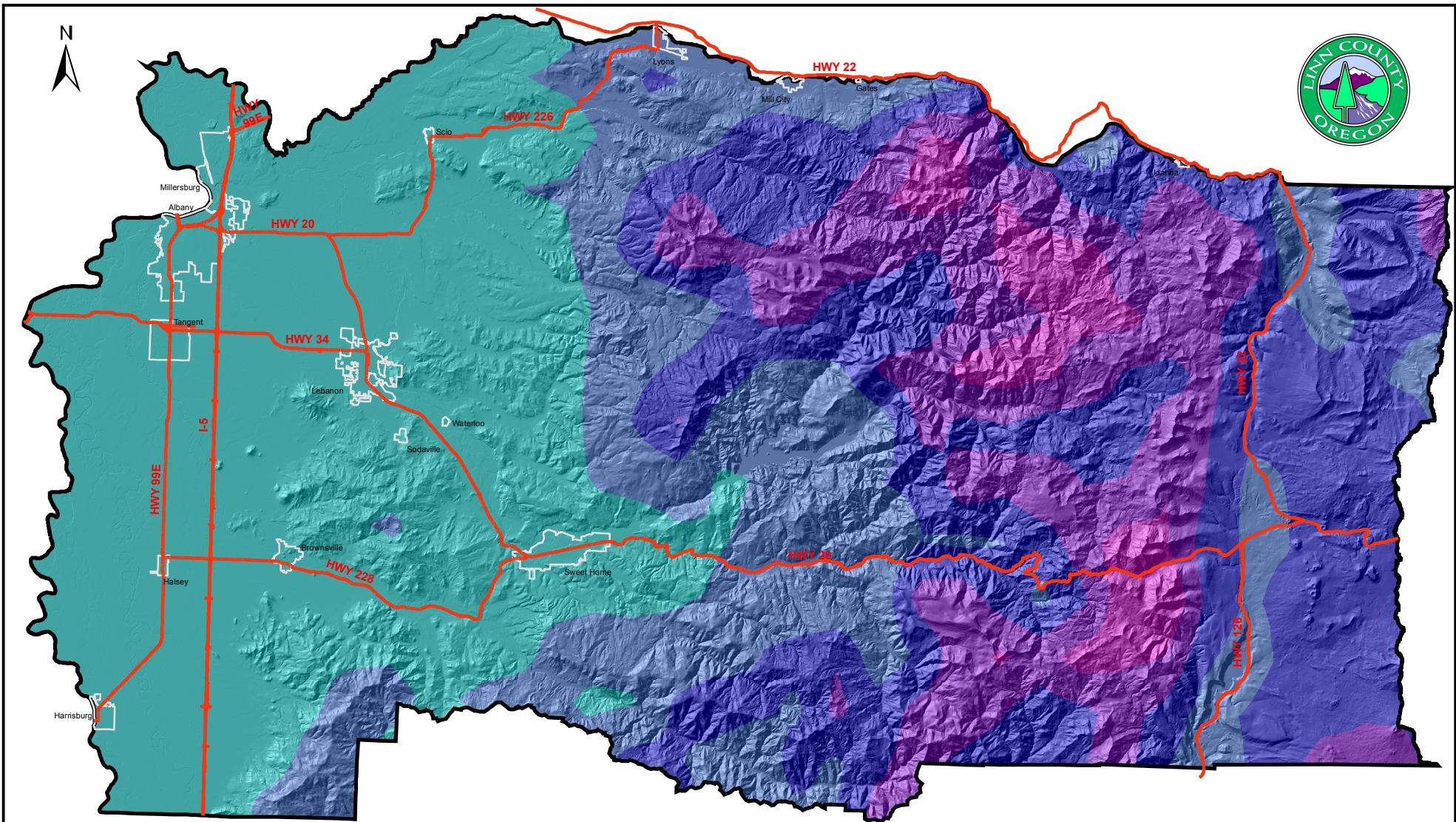
COUNTY BRIDGES

COVERED BRIDGES

ALL OTHER BRIDGES

EMERGENCY CONTACT NUMBERS

SWEETHOME		
PUBLIC WORKS	541-367-6977	OFC
PUBLIC WORKS	541-409-3614	CELL
PUBLIC WORKS	541-367-6972	HOME
PUBLIC WORKS	541-409-1050	CELL
POLICE	541-367-8182	HOME
	541-367-5181	
LINN COUNTY SHERIFF		
	541-967-3911	LINN COUNTY SHERIFF DISPATCH
OREGON STATE PATROL		
	541-967-2026	OFC
	541-967-2021	24HR DISPATCH CENTER
ODOT	1-800-776-7718	DISPATCH CENTER











This product is for informational purposes only and may not have been prepared for, or be suitable for legal, engineering, or surveying purposes. Users of this information should review or consult the primary data and information sources to ascertain the usability of the information.

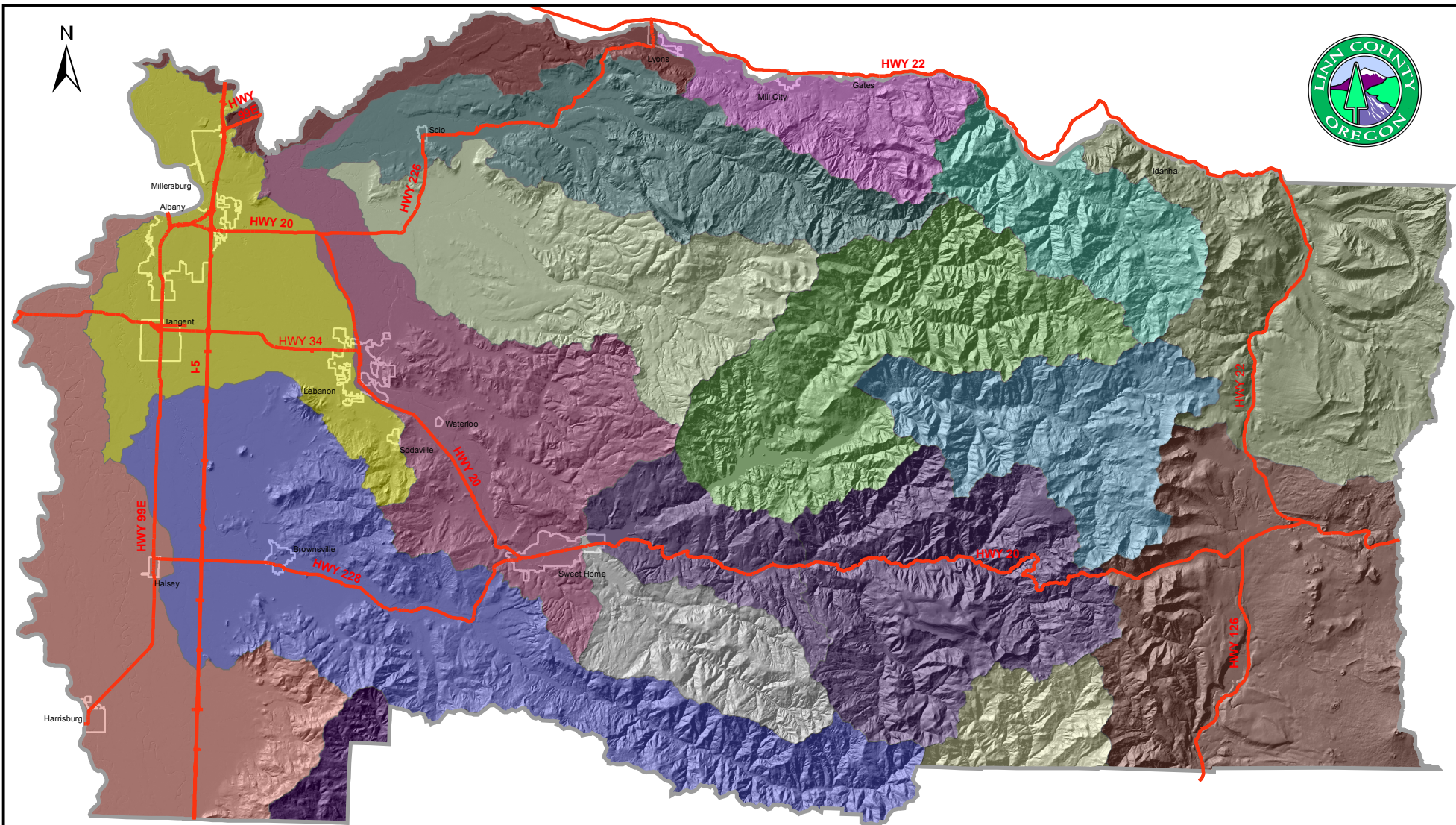
Map Created by the Linn County GIS Department
 Data Provided by Linn County and the
 Spatial Climate Analysis Service,
 Oregon State University
<http://www.ocs.oregonstate.edu/prism>

Precipitation Totals Linn County, Oregon

1 inch equals 7.20 miles

Legend

	State Highways		41 - 59
	City Limits		59.01 - 75
	County Boundary		75.01 - 87
			87.01 - 101
			101.01 - 119



This product is for informational purposes only and may not have been prepared for, or be suitable for legal, engineering, or surveying purposes. Users of this information should review or consult the primary data and information sources to ascertain the usability of the information.

Map Created by the Linn County GIS Department
Data Provided by Linn County and the Bureau of Land Management

10/21/05

Fifth Field Watersheds Linn County, Oregon

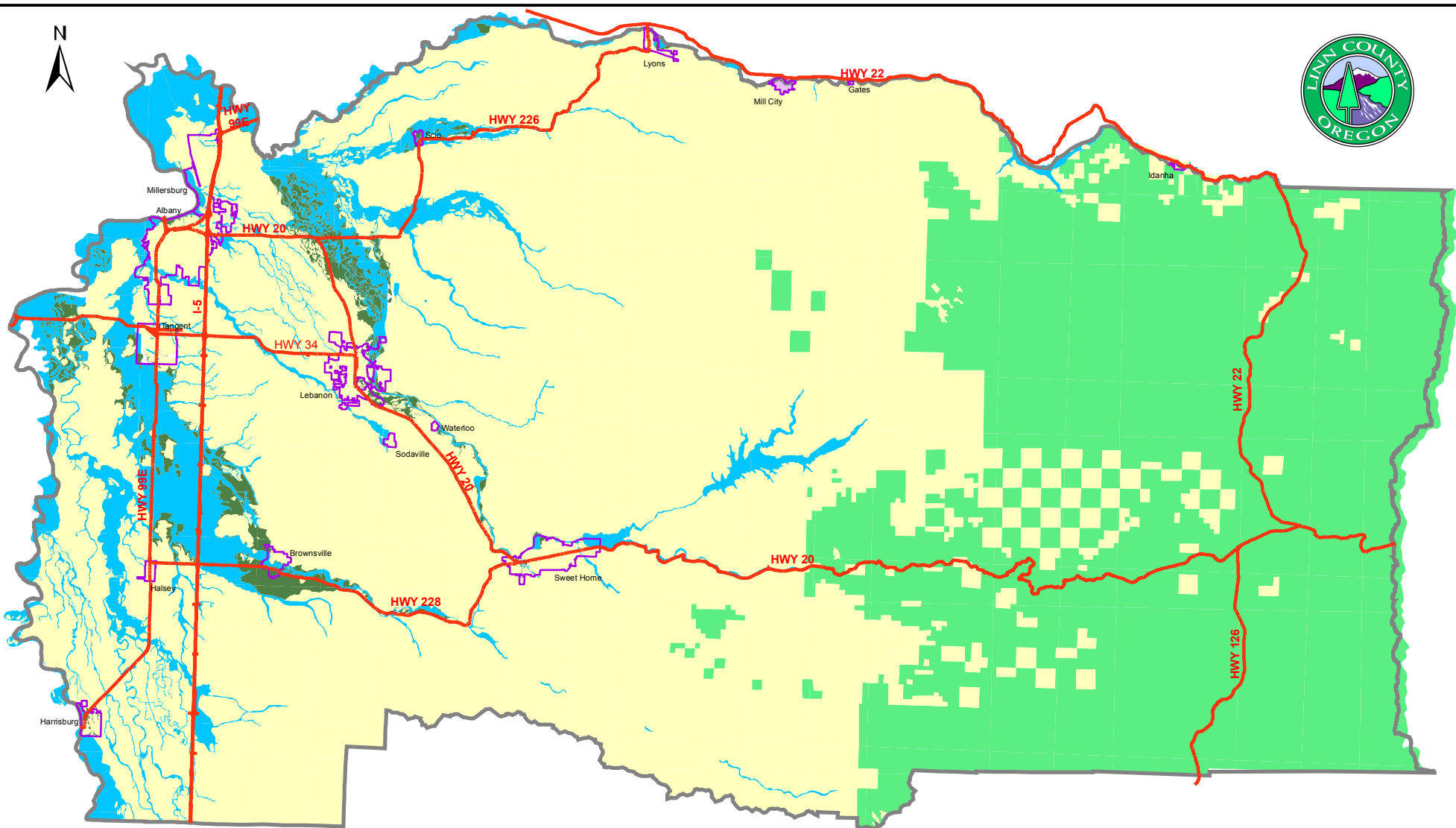
1 inch equals 7.20 miles

Legend

- State Highways
- County Boundary
- City Limits

Watersheds

- BLUE RIVER
- CALAPOOIA RIVER
- CRABTREE CREEK
- DETROIT RESERVOIR/BLOW OUT DIVIDE CREEK
- HAMILTON CREEK/SOUTH SANTIAM RIVER
- LOWER NORTH SANTIAM RIVER
- MIDDLE NORTH SANTIAM RIVER
- MIDDLE SANTIAM RIVER
- MOHAWK RIVER
- MUDDY CREEK
- OAK CREEK
- QUARTZVILLE CREEK
- SOUTH SANTIAM RIVER
- THOMAS CREEK
- UPPER MCKENZIE RIVER
- UPPER NORTH SANTIAM RIVER
- WILEY CREEK



This product is for informational purposes only and may not have been prepared for, or be suitable for legal, engineering, or surveying purposes. Users of this information should review or consult the primary data and information sources to ascertain the usability of the information.

Data Provided by FEMA and Linn County.

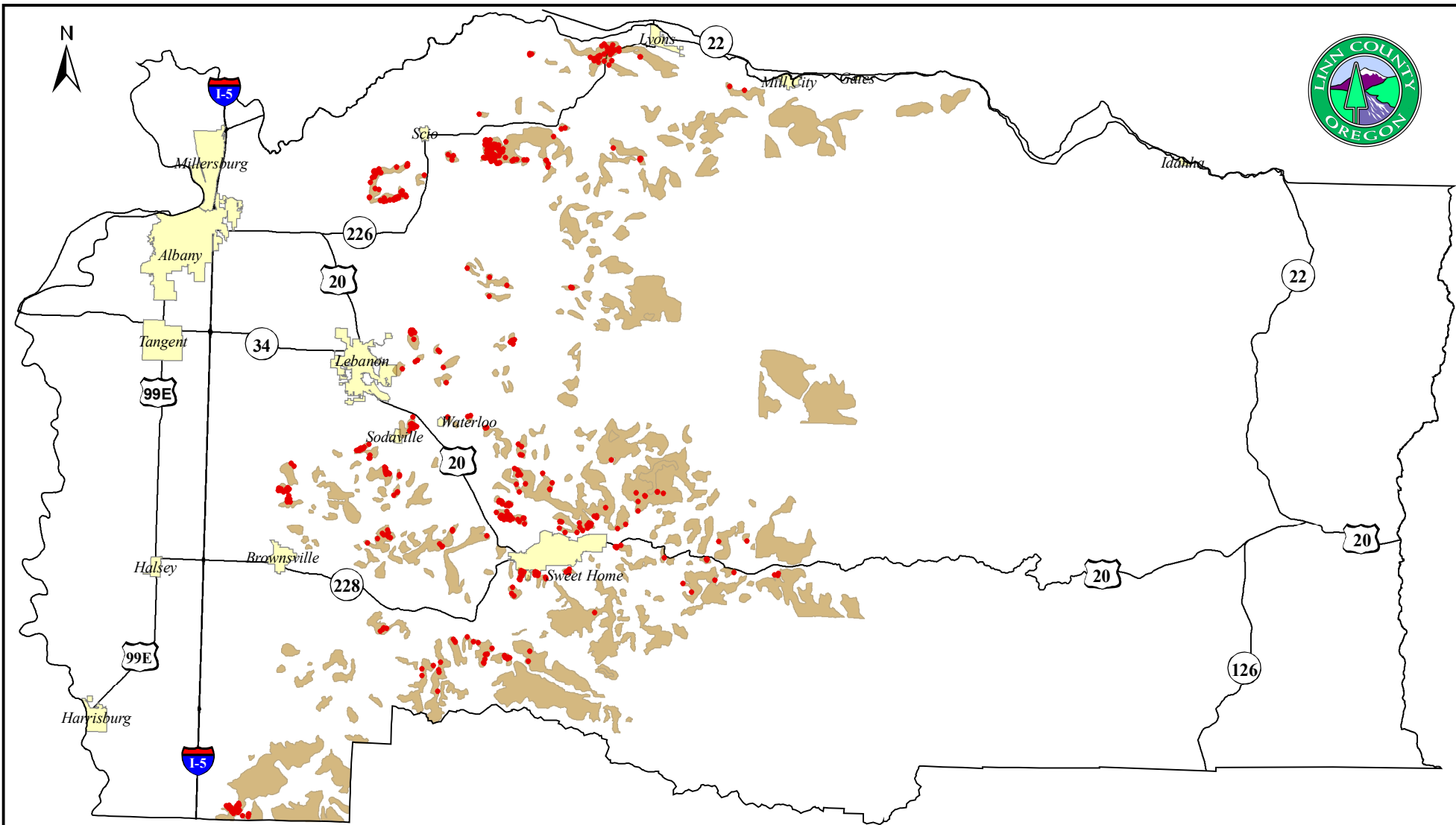
10/21/05

FEMA Flood Plain Linn County, Oregon

1 inch equals 7.20 miles

Legend

- State Highways
- City Limits
- County Boundary
- A - Inside 100
- ANI - Unmapped area
- B - Inside 500
- D - Undetermined but possible flood Area
- X - Outside 500 Year Floodplain
- X500 - Inside 500 Year



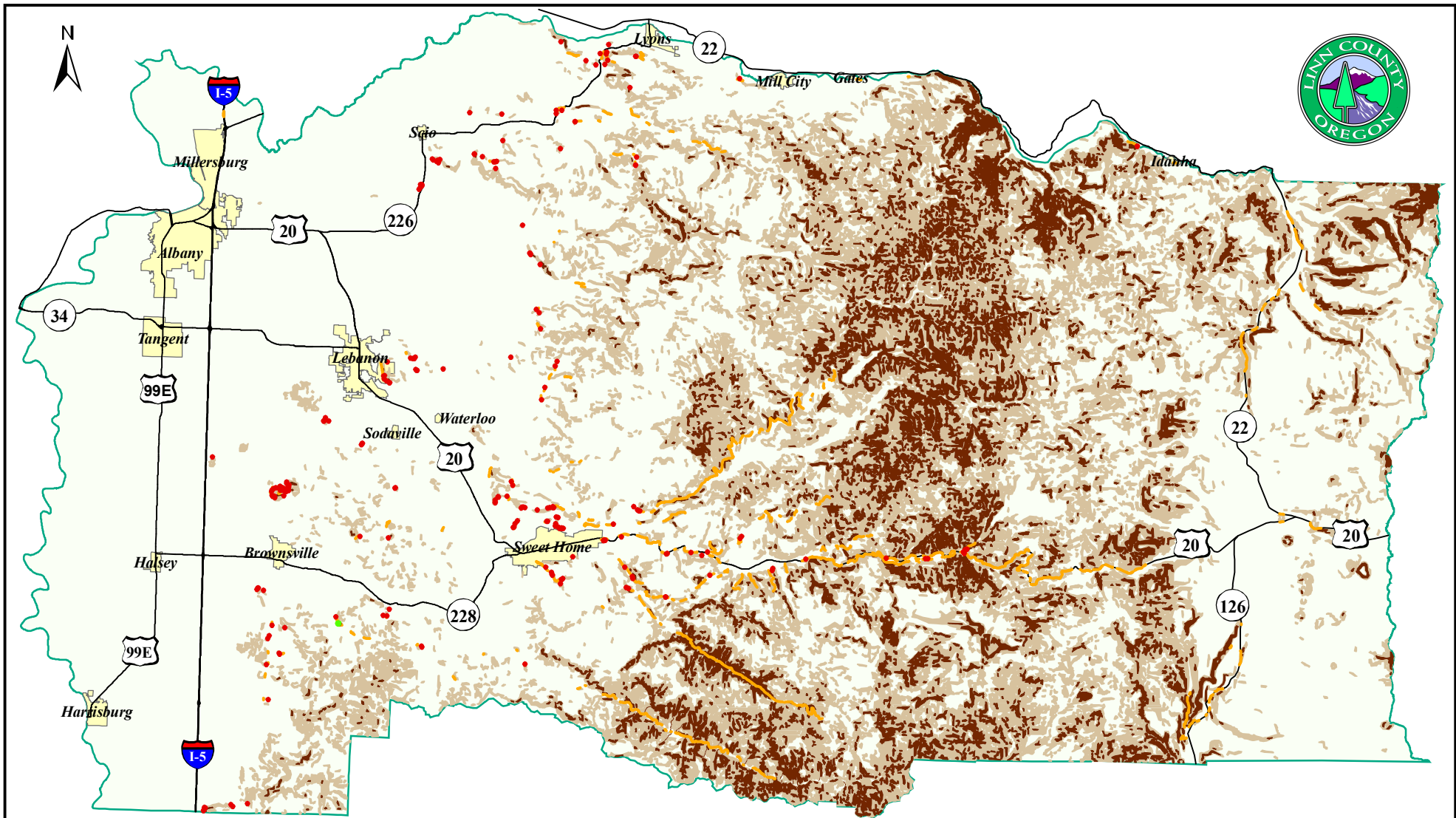
This product is for informational purposes only and may not have been prepared for, or be suitable for legal, engineering, or surveying purposes. Users of this information should review or consult the primary data and information sources to ascertain the usability of the information.

Mass Movement Hazard Areas And Vulnerable Improvements Linn County, Oregon

1 inch equals 7.20 miles

Legend

- Vulnerable Residential Structures
- Vulnerable Roads
- Major Highways
- Mass Movement Areas
- Cities



Debris flow data from the Oregon Department of Forestry.

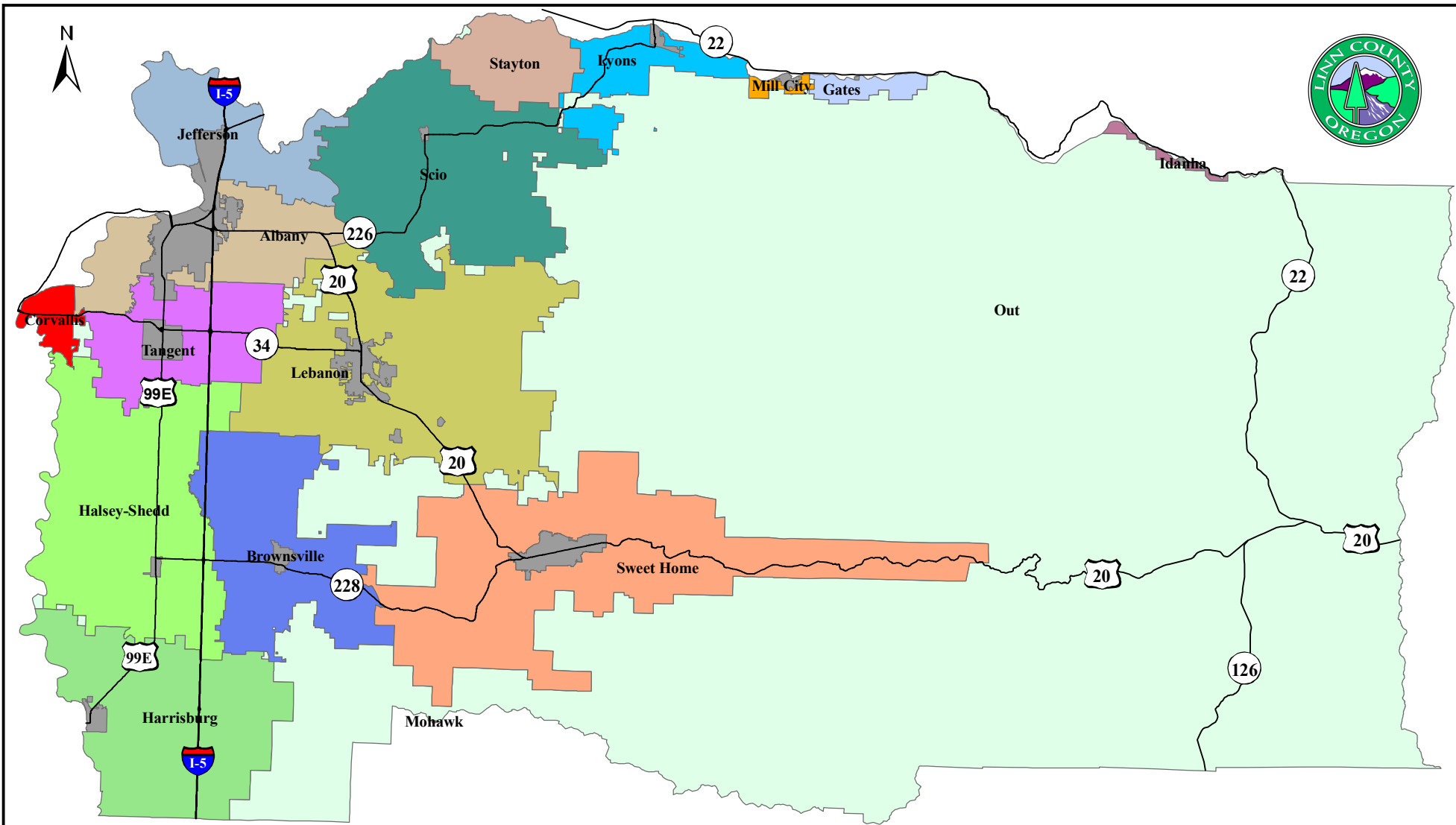
This product is for informational purposes only and may not have been prepared for, or be suitable for legal, engineering, or surveying purposes. Users of this information should review or consult the primary data and information sources to ascertain the usability of the information.

Potential Debris Flow Areas And Vulnerable Improvements Linn County, Oregon

1 inch equals 7.20 miles

Legend

- Residences
 - Commercial / Industrial
 - Highways/Roads
- Debris Flow Hazards**
- High
 - Moderate

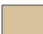









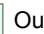
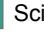

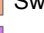
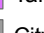
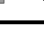



This product is for informational purposes only and may not have been prepared for, or be suitable for legal, engineering, or surveying purposes. Users of this information should review or consult the primary data and information sources to ascertain the usability of the information.

Rural Fire Districts Linn County, Oregon

1 inch equals 7.20 miles

Legend

Fire Districts	
	Albany
	Brownsville
	Corvallis
	Gates
	Halsey-Shedd
	Idanha
	Jefferson
	Lebanon
	Lyons
	Mill City
	Mohawk
	Out
	Scio
	Stayton
	Sweet Home
	Tangent
	City