

MICRO
WORKSHOP
SCHEDULES
INSIDE...

See pages 2 and 3 of this issue for the Computing Center's spring term workshop schedules. You'll find details on in-house workshops and CC-EMU Lab orientation classes, as well as information about how UO departments and instructors may arrange special group training sessions.

What's New in the Microcomputer Purchase Plan?

The Computing Center's Microcomputer Purchase Plan has freshened up for spring with an array of new products. Visitors to the Microcomputer Support Center showroom (202 Computing Center) will find the new Dell *Latitude* and Apple *Power Macintosh* product lines added to the Plan's wide selection of hardware and software.

Here's the scoop on the new products:

Dell Latitude Notebook

Latitude, Dell's new family of notebook computers, comes complete with a suite of communications software, packaged solutions for popular notebook applications, and around-the-clock technical support.

The *Latitude* line consists of five models weighing between 5.75 and 6.4 pounds. Each features Intel's SL-enhanced i486™ SX processors, offering optional active-matrix and dual-scan color screens, and power management features with suspend-to-disk capability. They are priced from \$1710 to \$3266.

Latitude systems include some key features typically found together on higher-priced notebook computers, such as

- 33 megahertz processors
- up to 260MB of disk storage
- fast local-bus video
- PCMCIA Type II or III expansion cards
- PCMCIA software support that allows card-swapping without rebooting
- integrated trackball

- long-life NIMH batteries
- a pre-installed communications software suite offering such services as e-mail, messaging, conferencing, interactive newspapers and magazines, fax capabilities, and online classes

Latitude also offers users some flexibility with a variety of packaged solutions that include modems and software: the "Must Have" pack for personal use, "Mobile Sales Manager" for general business and sales applications, "Mobile Office" for businesspeople on the go, "Mobile PowerPack" for high mobility and communications, and a "Desktop Solution" pack that allows you to use your notebook with desktop accessories when in an office.

Apple Power Macintosh

Power Macintosh, Apple's next generation of computers, offers the best of both worlds—a high-powered RISC-based PowerPC™ microprocessor and traditional Macintosh user-friendliness. The new line consists of three models:

- **Power Macintosh 6100/60** - with a 60 megahertz processor and expansion features, including a slot for a 7-inch NuBus™ card or PDS with adapter
- **Power Macintosh 7100/66** - a business model with a 66 megahertz processor, three NuBus expansion slots, and support for more colors on larger displays

- **Power Macintosh 8100/80** - an 80 megahertz processor, three NuBus expansion slots, built-in video support for up to 16.7 million colors, a Level 2 on-chip memory cache, dual-channel SCSI, and extensive storage options

Each model has a built-in math coprocessor, on-board Ethernet capability, and 16-bit stereo, CD-quality sound-input/output. In addition, each offers connections for the Apple GeoPort™ Telecom Adapter, so users can send and receive faxes from their computer or connect to online information services. All run the System 7 operating system, and have convenient Macintosh, DOS, and Windows compatibility features.

All models are available in AV configurations, featuring speech-recognition, text-to-speech, video-capture, video-output, and telecommunications technologies.

Prices for this series start at just over \$2000 for a complete system, including monitor and keyboard. Upgrades are also available for a number of earlier Macintosh models if owners wish to add a *PowerPC* microprocessor to their machine.

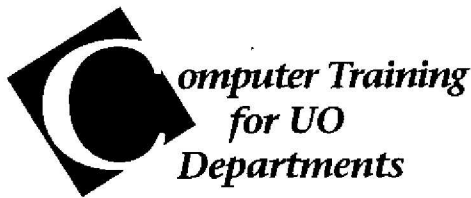
For additional information on these and other products offered through the Purchase Plan, stop by the Microcomputer Support Center (Room 202 Computing Center) between 9 am and 5 pm, Monday through Friday. Or, read the *Microcomputer Purchase Plan* files available via Gopher under *DuckScoop/Computing Center*. You may also direct your questions about pricing and product availability via either telephone (346-4402) or e-mail (*mpp@oregon*).

SPRING WORKSHOP SCHEDULE

Each term University Computing offers short introductory workshops on a variety of computing topics. These noncredit workshops are open free of charge to UO faculty, staff and students. This term's workshop schedule is outlined below. Pick up a flyer at the Microcomputer Consulting and Services office (Room 202A) for brief descriptions of the workshops.

Preregistration is required for all courses. To preregister or get more information, call 346-4412.

Workshop	Day/Date	Time	Room
<i>Introduction to Macintosh</i>	Wed April 6	10am - noon	B13 Klamath, Lab B
<i>Intermediate Macintosh Topics</i>	Fri April 8	10am - noon	B13 Klamath, Lab A
<i>Introduction to Microsoft Word for Macintosh</i>	Wed April 13	10am - noon	B13 Klamath, Lab B
<i>Introduction to DOS</i>	Tues April 5	3pm - 5pm	165 Computing Center
<i>Introduction to Windows</i>	Thurs April 7	3pm - 5pm	165 Computing Center
<i>Introduction to Microsoft Word 6.0 (Mac and Windows)</i>	Tues April 19	10am - noon	185 Computing Center
<i>Introduction to WordPerfect 6.0 for Windows</i>	Thurs April 21	10am - noon	185 Computing Center
<i>Introduction to Excel 5.0 (Mac or Windows)</i>	Thurs April 28	10am - noon	185 Computing Center



The Computing Center staff also offers workshops and in-depth classes to UO departments who request them. Departments may request training for their staff, students, or faculty. A class, workshop, or demonstration can be arranged either on-site at the department itself, or at an available computer lab.

Arrangements are contingent upon the availability of Center staff and lab facilities. Interested departments may contact Ray Arkin (phone: 346-1798; e-mail: arkin@oregon) for more information.

Internet Training for Instructors

Interested in learning how to use the Internet as a teaching aid? Center staff can help arrange workshops or individual training sessions for UO faculty and GTFs using either DOS-based or Macintosh machines.

These sessions are designed to orient you to the applications your students can use from either the CC-EMU Microcomputing Labs or the Klamath Lab and will provide examples relevant to your course requirements. Workshop

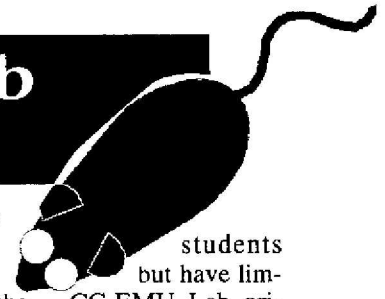
materials can be tailored to your particular discipline and equipment.

Possible topics include e-mail use, subscribing to newsgroups and lists, and utilizing *Gopher* and *Veronica*, FTP (file transfer protocol), *archie*, *Telnet*, and *NCSA Mosaic*.

To inquire about arranging your own Internet training session, or to get more information, contact Lucy Lynch (e-mail: llynch@oregon; phone: 346-1736).

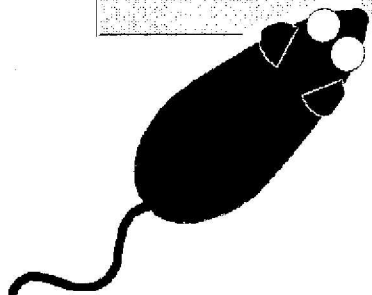
The University of Oregon is an equal-opportunity, affirmative action institution committed to cultural diversity and compliance with the Americans with Disabilities Act.

CC-EMU Microcomputer Lab Orientation Workshops for Students



The CC-EMU Microcomputing Lab, located on the bottom floor of the Erb Memorial Union in Room 22, offers unlimited lab use and e-mail access to all UO for a fee of \$10 per term. If you'd like to take advantage of this low-cost facility but have limited experience with microcomputers, you might want to attend one or more of the CC-EMU Lab orientation workshops described below. These workshops are open to any student who buys either a CC-EMU spring term lab pass or qualifies for a spring term Klamath Lab sticker.

Workshop	Day/Date	Time	Room	Requirements
<i>Introduction to the Macintosh</i> Covers Mac and e-mail basics and presents a brief introduction to Microsoft Word	Sat April 9	10am - noon	22 EMU	<ul style="list-style-type: none"> • a valid CC-EMU spring term lab pass • an e-mail address on DuckMail or OREGON
<i>Introduction to DOS & Windows 3.1</i> Covers DOS and e-mail basics. Introduces Microsoft Word for Windows and WordPerfect for DOS	Sun April 10	10am - noon	22 EMU	<ul style="list-style-type: none"> • a valid CC-EMU spring term lab pass • an <i>unformatted</i> double-density 3.5" disk • an active e-mail address on DuckMail or OREGON
<i>Intro to the Internet using a Macintosh</i> Covers e-mail basics, subscribing to newsgroups and/or lists, and how to use TurboGopher and Veronica. You'll learn how to locate files usingarchie, retrieve files from remote sites (FTP), and how to use Telnet and NCSA Mosaic to explore the Internet.	Sat April 16	10am - noon	22 EMU	<ul style="list-style-type: none"> • a valid CC-EMU spring term lab pass • a <i>formatted</i> double-density 3.5" disk • an active e-mail address on DuckMail or OREGON
<i>Intro to the Internet using Windows 3.1</i> Covers e-mail basics using PC Eudora, subscribing to Newsgroups and/or Lists, and how to use Gopher and Veronica. You'll learn how to locate files usingarchie, retrieve files from remote sites (FTP), and explore the Internet using Telnet and NCSA Mosaic.	Sun April 17	10am - noon	22 EMU	<ul style="list-style-type: none"> • a valid CC-EMU spring term lab pass • a <i>formatted</i> double-density 3.5" disk • an active e-mail address on DuckMail or OREGON



If you have questions about these workshops, contact Lucy Lynch (phone: 346-1736; e-mail: llynch@oregon)

VAX & DARKWING NEWS

Following DARKWING's recent upgrade to the Solaris 2.3 operating system, its software offerings continue to evolve. Recent installations include a new release of SPSS, S-PLUS, and Interleaf 6. Here are the details:

SPSS 5.0

This latest release of SPSS introduces support for the *Motif GUI* (graphical user interface) on X-terminals, supplementing interactive and batch modes. This means that SPSS can now run in one of four modes on DARKWING, depending on the command you issue to invoke it:

1. *Motif GUI* (X-terminal)

```
% spss
```

2. *SPSS Manager*

```
% spss +m
```

3. *Prompted*

```
% spss -m
```

4. *Batch*

```
% spss -m commandfile.sps>outfile.lst
```

If you use SPSS with command files in "batch" mode, remember to include the **-m** option preceding the command file name (*commandfile*).

You should be able to run programs and system files used with previous SPSS versions without modification.

For an overview of new features, you'll find a full set of documentation for SPSS 5.0 in the Computing Center Documents Room (205). If you use *Motif*, the *SPSS Base System User's Guide for Release 5.0* should be particularly useful.

S-PLUS Version 3.2

StatSci's S-PLUS is now available from both the command line and for use with X-based terminals. S-PLUS offers several enhancements to AT&T's original S program, most notably in its

support for the *X/Motif* graphical interface.

To run S-PLUS, type

```
% Splus -e
```

at the UNIX prompt. S-PLUS responds with several messages, followed by the command prompt ">"

If you use S-PLUS from an X-based terminal or computer, you may explore and analyze your data using a number of basic and advanced graphics tools. To get a *Motif* window in S-PLUS, type

```
> motif ()
```

For further information on S-PLUS, consult the S-PLUS manuals in the Computing Center Documents Room, or contact Audun Runde (telephone: 346-1714; e-mail: audun@oregon).

Interleaf 6 for Motif

Interleaf 6, the latest version of the *Interleaf* graphics publishing workspace for X-based terminals, is now installed on DARKWING. To run *Interleaf 6*, move your pointer inside a UNIX shell window and type

```
> ileaf6
```

at the command prompt, opening the desktop window.

For help running the program, you can open the Help menu and browse the *Quickstart* tutorial, as well as other more specific documentation.

It's true...

BMDP, EQS are back on OREGON

Now that DARKWING's upgrade to Solaris 2.3 is complete, BMDP and EQS have been moved back to OREGON. This move was necessary because Solaris versions of these programs were not available.

We apologize for any inconvenience this may cause our users. Contact Audun S. Runde (phone: 346-1714; e-mail: audun@oregon) if you need assistance moving your work from DARKWING to OREGON.



Network explorers may want to investigate *NetCetera*, NorthWestNet's weekly newsletter. In it, you'll find timely articles on a wide range of network topics, from understanding URLs to instructions for accessing images from NASA's Clementine moon probe.

NetCetera is available on the UO's Gopher server under gopher.nwnet.net. One of the advantages of accessing *NetCetera* via *gopher* is that you may go directly to many of the resources described in the articles.

Computing News is published twice a term during the academic year by the Publications group of the Office of University Computing, Computing Center, University of Oregon, Eugene, OR 97403. Telephone: (503) 346-1724

Newsletter Editor: Joyce Winslow

(jwins@oregon.uoregon.edu)

Editorial Advisor: Dave Ulrich

(du@oregon.uoregon.edu)

You may reprint articles from *Computing News*, provided you credit the source.