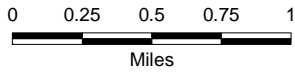


# ZONING MAP

Update Effective January 5, 2007

11,931.3 - Total Acres

City of  
Beaverton



## LEGEND

### RESIDENTIAL

- R10 Urban Low Density  
10,000 sq. ft. - Single Family
- R7 Urban Standard Density  
7,000 sq. ft. - Single Family
- R5 Urban Standard Density  
5,000 sq. ft. - Single Family
- R4 Urban Medium Density  
4,000 sq. ft. - Single Family
- R3.5 Urban Medium Density  
3,500 sq. ft. - Duplex / Multi-Family
- R2 Urban Medium Density  
2,000 sq. ft. - Multi-Family
- R1 Urban High Density  
1,000 sq. ft. - Multi-Family

### COMMERCIAL

- CV Convenience Service Center
- OC Office Commercial
- NS Neighborhood Service Center
- CS Community Service
- GC General Commercial

### MULTIPLE USE

- C-MU Corridor - Multiple Use
- SA-MDR Station Area - Medium Density
- SA-MU Station Area - Multiple Use
- SC-HDR Station Community - High Density
- SC-E Station Community - Employment
- SC-MU Station Community - Multiple Use
- Station Community - Sub Area
- TC-MDR Town Center - Med. Density Residential
- TC-HDR Town Center - High Density Residential
- TC-MU Town Center - Multiple Use
- RC-OT Regional Center - Old Town
- RC-E Regional Center - East
- RC-TO Regional Center - Transit Oriented

### INDUSTRIAL

- CI Campus Industrial
- IP Industrial Park
- LI Light Industrial

### INTERIM ANNEXATION ZONING

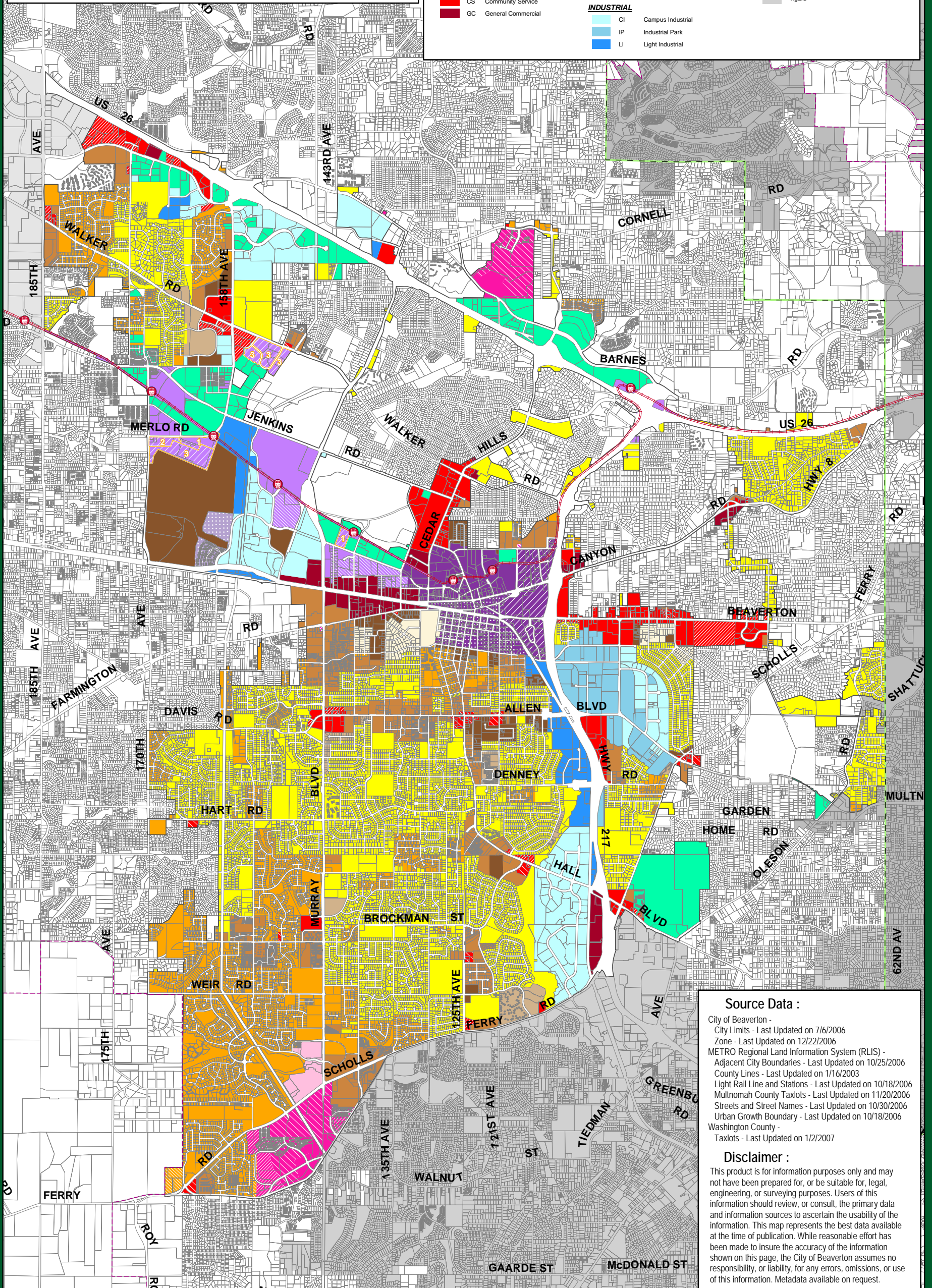
- WAcnty Interim Washington County Zoning

### MISCELLANEOUS

- Beaverton City Limits
- Approved Annexations - (Effective at a later date)
- Taxlots
- Light Rail Station
- Light Rail Line
- Urban Growth Boundary
- County Line

### OTHER CITY LIMITS

- Hillsboro
- Portland
- Tigard



### Source Data :

- City of Beaverton -
- City Limits - Last Updated on 7/6/2006
- Zone - Last Updated on 12/22/2006
- METRO Regional Land Information System (RLIS) -
- Adjacent City Boundaries - Last Updated on 10/25/2006
- County Lines - Last Updated on 1/16/2003
- Light Rail Line and Stations - Last Updated on 10/18/2006
- Multnomah County Taxlots - Last Updated on 11/20/2006
- Streets and Street Names - Last Updated on 10/30/2006
- Urban Growth Boundary - Last Updated on 10/18/2006
- Washington County -
- Taxlots - Last Updated on 1/2/2007

### Disclaimer :

This product is for information purposes only and may not have been prepared for, or be suitable for, legal, engineering, or surveying purposes. Users of this information should review, or consult, the primary data and information sources to ascertain the usability of the information. This map represents the best data available at the time of publication. While reasonable effort has been made to insure the accuracy of the information shown on this page, the City of Beaverton assumes no responsibility, or liability, for any errors, omissions, or use of this information. Metadata available on request.