

Propane Refueling at Facilities Services

Step One

Insert the filler nozzle into the P.O.L. fitting on the vapor valve (P.O.L. is the common term for the left-hand thread fitting standard on most cylinders and motor vehicle vessels). Remember, this is left-hand thread. Open the fill valve by turning the handle counter-clockwise. Open the 80% valve with either your fingers or a screwdriver, whichever it's construction necessitates. If the tank is not completely empty, you should hear the hissing of escaping vapor. If liquid escapes, the tank is full. Open the valve on the fill nozzle, set the meter to zero and turn the pump on. The tank is now being filled.

Step Two

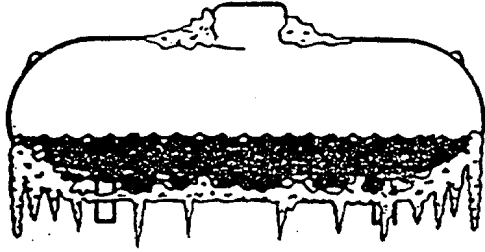
Continue to fill the tank until liquid begins to escape from the 80% valve. At first it may be intermittent. At this point close the fill nozzle valve and check if the stream is constant. Continue to add a little at a time, shutting the flow off to check the 80% valve. It is often the case that the flow of liquid into the cylinder blocks the liquid from escaping out the 80% valve at the proper time, so by shutting the flow off, the proper reading is obtained. When liquid flows in a constant stream from the 80% valve, shut it off. Gloves may be needed if you are using your hands. Shut off the pump and the fill nozzle valves.

Step Three

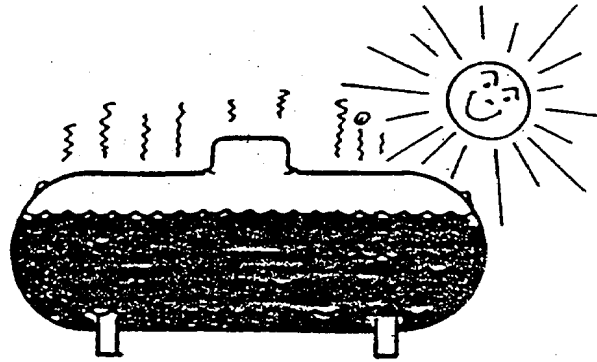
Turn the fill nozzle clockwise and allow the pressure to bleed off, then continue and remove the nozzle. The cylinder is now full. Check the fill and 80% valves again to ensure that they are secure.

If leakage is visible or audible, check the source. Common locations are around the fill handle, out the fill valve, out the relief valve, or around the threads on the valve. If the leak is around the threads, the valve can be removed and re-tightened when the tank is empty. Leaks at the other locations can only be remedied by replacing the valve.

The same amount of liquid. . .

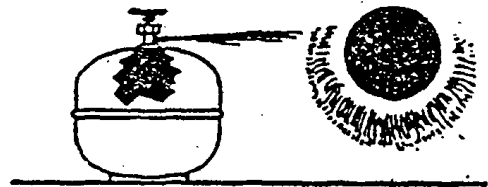
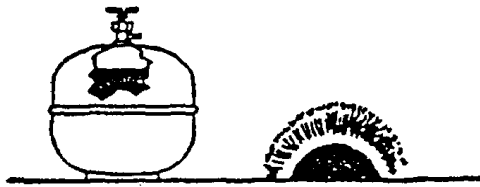


. . . will occupy less space at a low temperature. . .



. . . than it will occupy when heated to a higher temperature.

Safety in Cylinder Filling

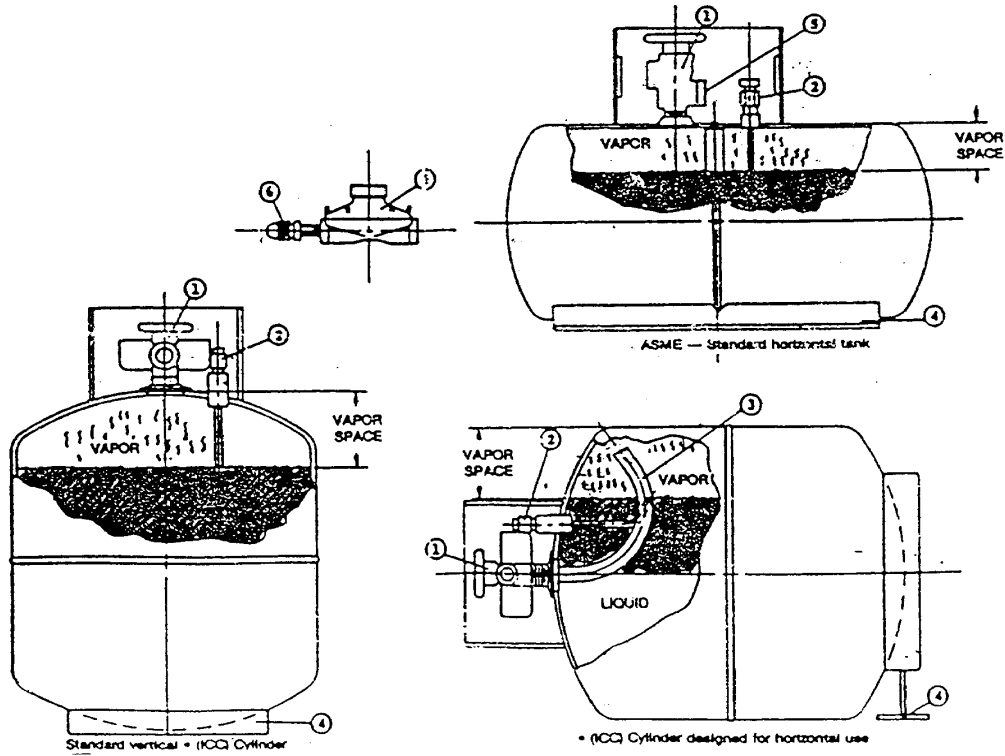


Properly filled cylinder (left) has space above liquid for expansion. Overfilling cylinder (right) results in blowing liquid through safety relief valve when temperature rises.

Cylinders must be accurately filled with sufficient space for expansion. All cylinders must be weighted to be sure they are not overfilled.

Common Terms of Propane Tanks

- | | | | |
|----|---|----|--------------------------------|
| 1. | POL - Vapor Withdrawal Service Valve | 4. | Bottom Ring or Stand Legs |
| 2. | Liquid Level Guage | 5. | Safety Relief Valve |
| 3. | Vapor Withdrawal Tube - (Used on Tanks Where POL Valve is Not Located on Top of Tank) | 6. | POL - Spud and Nut (Left Hand) |
| | | 7. | Low Pressure Regulator |



LP Gas Refueling Instructions for Permanently Mounted Tanks

1. Stop Engine - Put in Gear - Set Hand Break
2. No Smoking or Open Flames
3. Connect Fill Hose to Tank
4. Open Main Valve at Storage Tank
5. Turn Propane Pump "On"
6. Slowly Open Valve and End of Fill Hose
7. Open 80% Liquid Fill Valve on Tank
8. Fill Until Liquid Appears, Then Close 80% Fill Valve
9. Close Valve on End of Fill Hose Immediately
10. Shut Propane Pump "Off"
11. Disconnect Fill Hose From Tank
12. Close Main Valve at Storage Tank

DO NOT OVER-FILL

Created: November 13, 2001
Reviewed: June 29, 2005
Approved by: Steve Pelkey, Safety Manager
Facilities Services
1276 University of Oregon
Eugene, OR 97403