

## Highlights on Grant, Contract, and Award Activity

### Overview

Grants, contracts and awards to the University of Oregon reached an all-time high in Fiscal Year 1998-99, totaling \$58,616,598. This represents a 28.6% increase, in the amount of \$13 million, over the previous fiscal year. FY 99 was a banner year for extramural funding to the UO, with a 7% increase over the last highest year, FY 1996-97. [Charts I and II](#) show the distribution of funding by agency type. [Tables I and II](#) give multi-year summaries of funding by agency and sponsor type.

Federal support totaled \$42,862,943, accounting for 73% of total award dollars. Federal funding increased by 18% over the prior fiscal year, and with sub-federal funding included, it increased nearly 43% over FY 98. Over 83% of direct federal awards were received from three agencies—the US Department of Education (USDE) which increased over the previous FY by 35% or \$3 million; the National Science Foundation (NSF) which increased 8% or \$740,000; and the US Department of Health & Human Services (DHHS) which increased 28% or \$3.5 million. In past years, sub-federal funds awarded to the UO by prime recipients, such as state or local government, other universities, and various private and foreign organizations, were not separately accounted for as sub-federal in the awards tracking system. Identifying this kind of support in FY 99, we find that nearly 60% of the sub-federal awards originated from the US Department of Education.

Private foundations and corporations awarded nearly \$3 million in support of research and programs. State of Oregon agencies made grants and contracts to the UO totaling \$3.3 million, including direct and Sub-federal flow-through funds.

The College of Arts and Sciences received more than half of total awards (52%), amounting to \$30.4 million, while the College of Education received \$18.5 million or 32% of total awards. [Chart III](#) breaks out funding levels by campus unit. The University's major missions of instruction, research and public service are complementary and awards are often made that benefit more than one area. [Chart IV](#) attempts to differentiate funding received for these major areas, recognizing that a grant may support a combination: research (72.1%), instruction (6.6%), and public service projects (21.3%).

Proposal activity increased in FY 99 over the prior year, by \$6 million in first-year requested funding levels. As [Charts V and VI](#) indicate, most proposals were submitted to federal agencies (83% of total dollars requested), of which 86% went to three agencies—USDE, NSF, and DHHS. [Chart VII](#) shows proposal dollars requested as new or renewal applications (72%), non-competing continuations (20%), and other types of applications

(8%). The ratio of number of applications by agency type is shown in [Chart VIII](#), with 65% of applications going to federal agencies.

Expenditures are reported based on account activity, or spending, during the fiscal year, which differs from the award amounts received for the same period. [Tables III and IV](#) track multi-year spending totals by campus unit, showing a constant upward trend over the past decade. Expenditures totaled \$56.6 million in FY 98-99, a 4.9% increase over the prior year.

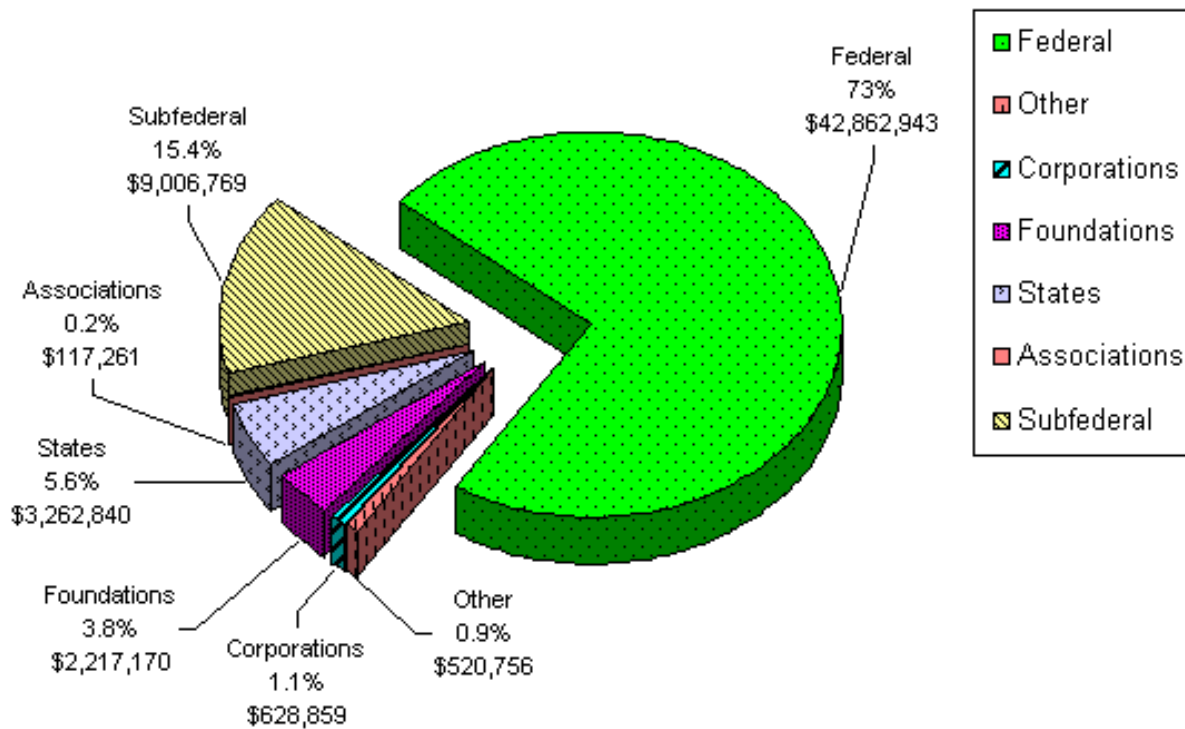
[Table V](#) shows expenditure levels by campus organizations?research centers and institutes combined for 62.5% of total expenditures while academic departments and other programs and offices accounted for 37.5%. [Chart IX](#), on expenditures by cost category, shows that almost half of extramural support goes toward personnel costs (\$26.6 million), with another \$19 million for services, supplies, equipment and miscellaneous expenditures. The University's facilities and administrative (F&A) costs are charged on grants and contracts using appropriate rates under its negotiated agreement with DHHS. While the negotiated rates range from 26% to 50%, the actual F&A rate may be limited by statute or program guidelines for some awards. Chart IX shows \$10.7 million was charged for facilities and administrative costs in FY 99; this equates to only 23% of total direct expense, well below the negotiated rates.

Support received for student research, training and instructional programs totaled \$6.6 million. Of this total, the College of Education received just over \$2 million in training support. The Institute of Neuroscience and Department of Biology/Ecology and Evolution received a training grant for \$1.2 million from the National Science Foundation, one of only 21 such awards last year to integrate graduate education and research training. Individual faculty received fellowships and awards totaling over \$300,000, including the NEH Fellowship for University Teachers, the John Simon Guggenheim Fellowship, and the NSF Career award.

\*Sub-federal funds originate from the federal government and are awarded to the UO through the prime recipients, such as state or local government, other universities, and various private and foreign organizations. In past years, sub-federal funding was not separately identified in ORSA's awards tracking system.

## Awards Received

### Chart I - By Agency Type

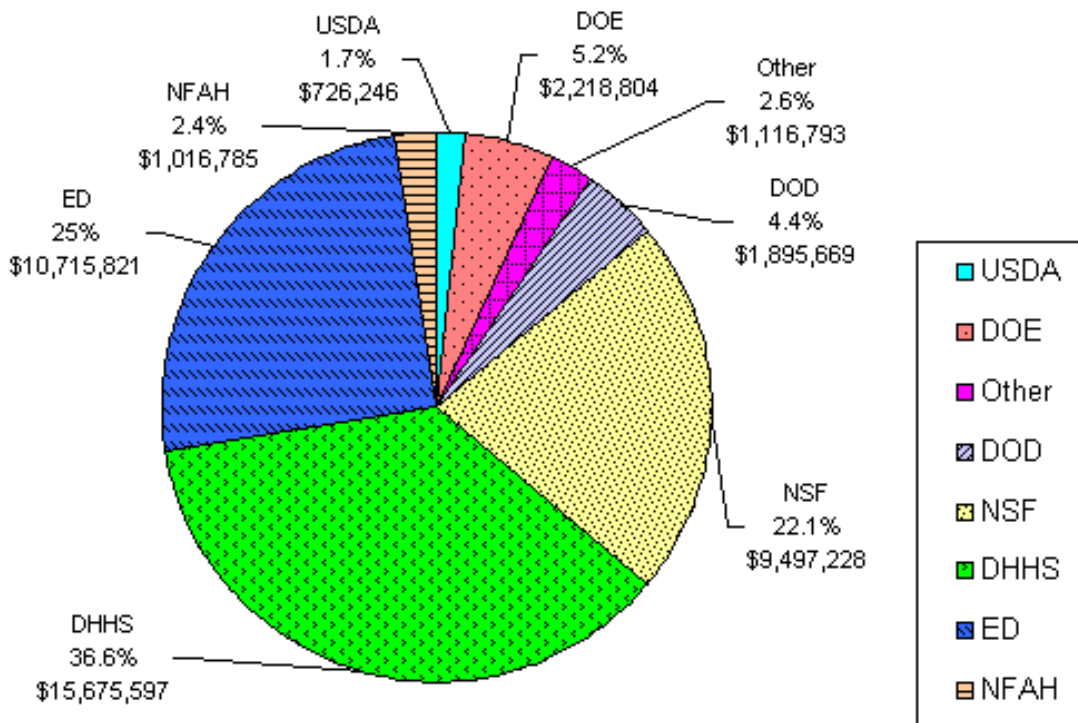


**Total Awards \$58,616,598**

[back to top](#)

---

### Chart II - By Federal Agency



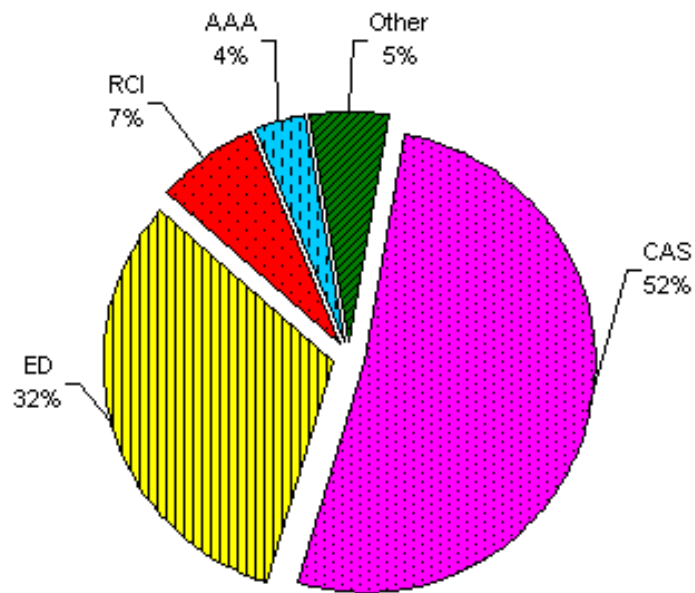
**Total Federal \$42,862,943**

Federal Acronyms			
<b>ED</b>	<a href="#">Department of Education</a>	<b>DHHS</b>	<a href="#">Department of Health and Human Services</a>
<b>DOD</b>	<a href="#">Department of Defense</a>	<b>DOE</b>	<a href="#">Department of Energy</a>
<b>DOI</b>	<a href="#">Department of Interior</a>	<b>NFAH</b>	National Foundation on the <a href="#">Arts</a> and the <a href="#">Humanities</a>
<b>NSF</b>	<a href="#">National Science Foundation</a>	<b>USDA</b>	<a href="#">Department of Agriculture</a>

[back to top](#)

### CHART III - By Recipient

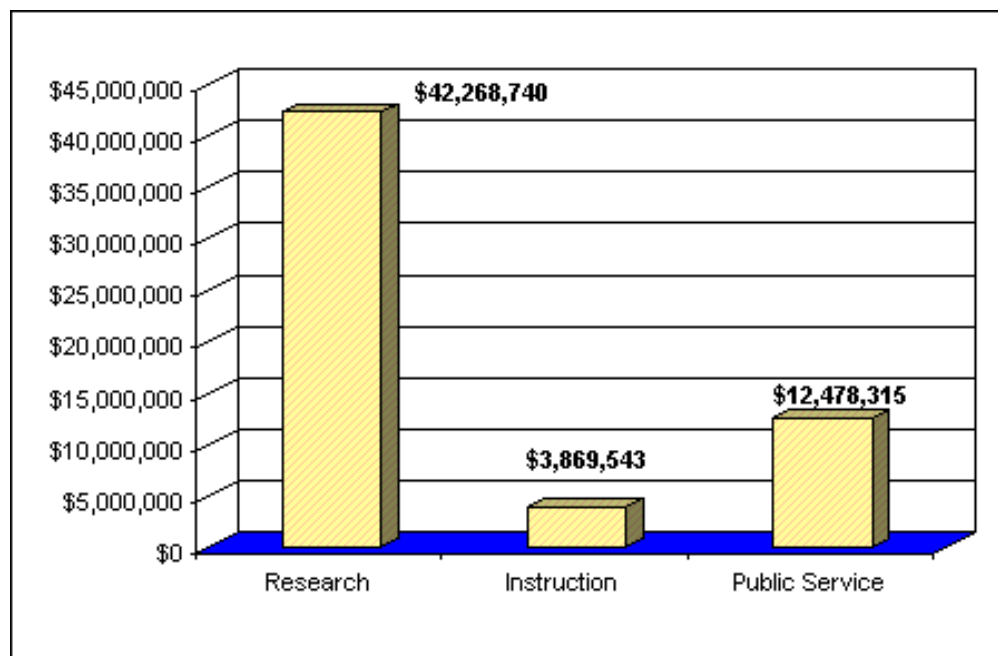
College of Arts and Sciences (CAS)	\$30,417,472
College of Education (ED)	\$18,559,930
Cross-Campus Research Centers and Institutes (RCI)	\$4,262,539
School of Architecture and Allied Arts (AAA)	\$2,175,697
Other Schools, Colleges, Programs	\$3,200,960
<b>TOTAL</b>	<b>\$58,616,598</b>



[back to top](#)

---

**Chart IV - By Type Of Activity**



[back to top](#)

---

**TABLE I - By Agency Type FY 95-99**

	<u>1994-95</u>	<u>1995-96</u>	<u>1996-97</u>	<u>1997-98</u>	<u>1998-99</u>
<b>Federal</b>	\$40,578,922	\$38,223,508	\$45,463,825	\$36,310,750	\$42,862,943
Department of Education	8,686,104	9,290,493	13,279,666	7,751,762	10,715,821
Dept. of Health & Human Services	12,373,429	13,033,605	13,160,109	12,220,950	15,675,597
National Science Foundation	9,143,081	7,705,863	12,010,910	8,757,560	9,497,228
Department of Defense	2,869,898	2,471,347	2,235,502	2,431,241	1,895,669
Department of Energy	4,123,235	2,930,728	1,354,570	2,741,520	2,218,804
Department of Agriculture	442,170	176,029	758,249	459,510	726,246
Department of Interior	572,790	359,265	616,583	249,724	*
Nat'l Foundation on Arts/ Humanities	*	*	*	*	1,016,785
Other Federal*	2,368,215	2,256,178	2,048,236	1,698,483	1,116,793
<i>Sub-Federal Funding**</i>					9,006,769
<i>Private Foundations</i>	1,982,110	2,501,378	3,275,744	1,236,713	2,217,170
<i>Corporations</i>	562,479	749,008	430,106	601,301	628,859
<i>Associations</i>	483,621	1,033,419	535,751	293,489	117,261
<i>States</i>	1,063,505	2,301,892	1,196,710	2,392,707	3,262,840
<i>Other</i>	4,643,477	1,383,863	3,860,388	4,748,439	520,756
<b>TOTAL</b>	<b>\$49,314,114</b>	<b>\$46,193,068</b>	<b>\$54,762,524</b>	<b>\$45,583,399</b>	<b>\$58,616,598</b>

\*Federal agencies with less than \$100,000 annual support are included in Other Federal total

\*\*Sub-Federal support includes flow-through federal funds to UO from state, local and other agencies and organizations

[back to top](#)

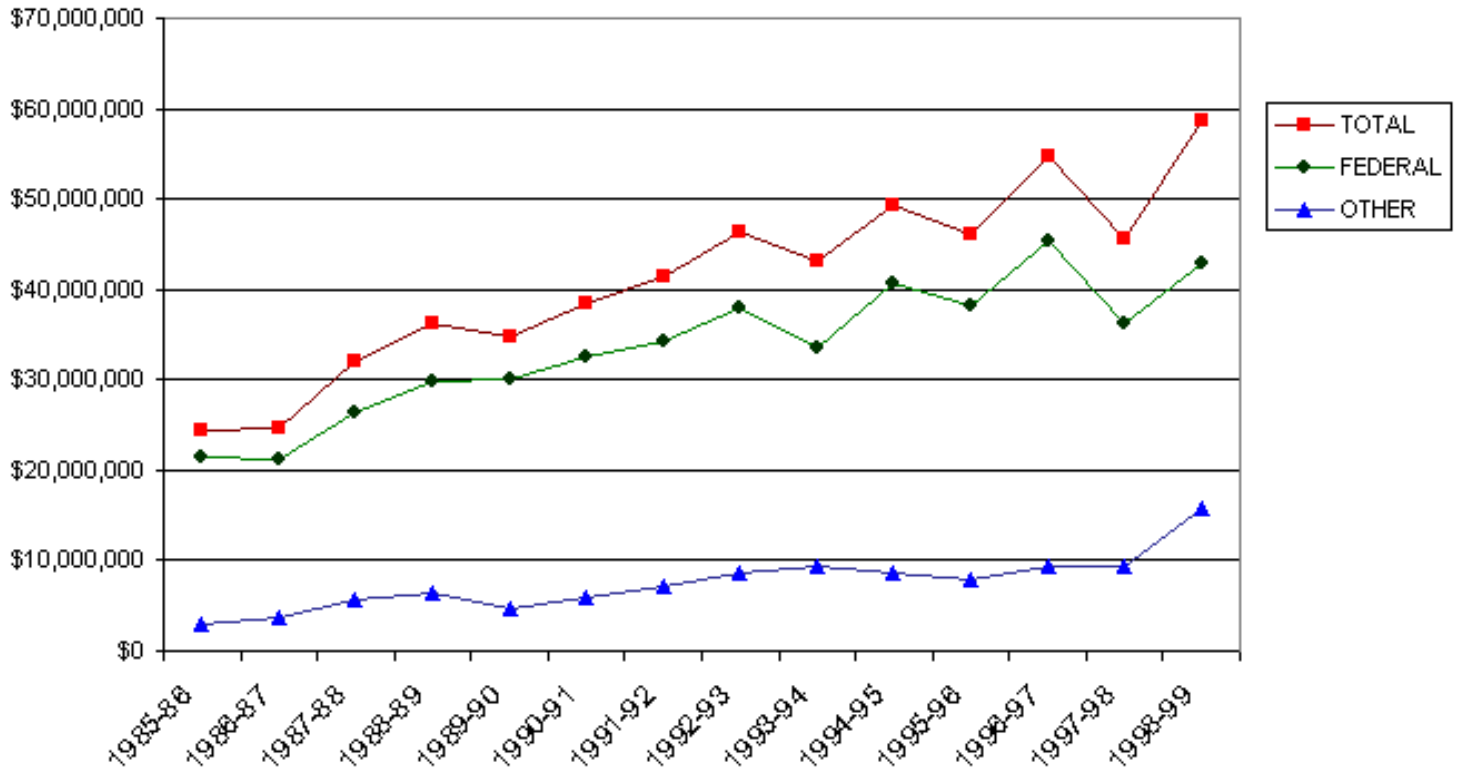
**TABLE II - A Multi-Year Summary By Source Type**

<u>FY</u>	<u>Total</u>	<u>Federal</u>	<u>Private</u>	<u>*Oregon</u>	<u>Other</u>
1985-86	24,335,347	\$21,423,814	1,843,294	\$353,685	\$714,554
1986-87	24,753,897	21,129,421	2,034,128	728,307	862,041
1987-88	32,001,971	26,404,350	3,795,002	757,347	1,045,272
1988-89	36,144,268	29,725,452	5,159,089	742,407	517,320
1989-90	34,691,675	30,035,647	3,095,893	878,327	681,808
1990-91	38,454,502	32,624,458	3,699,347	1,261,942	868,755
1991-92	41,439,740	34,233,730	5,719,960	552,165	933,885
1992-93	46,439,911	37,935,710	5,103,303	787,673	2,613,225

1993-94	<b>43,084,988</b>	33,600,910	4,487,702	2,232,849	2,763,527
1994-95	<b>49,314,114</b>	40,578,922	3,351,519	1,058,505	4,325,168
1995-96	<b>46,193,068</b>	38,223,508	4,443,654	2,299,892	1,226,014
1996-97	<b>54,762,524</b>	45,463,825	4,562,788	1,191,210	3,544,701
1997-98	<b>45,583,399</b>	36,310,750	2,311,703	2,129,020	4,831,926
1998-99	<b>58,616,598</b>	42,862,943	3,072,935	3,299,591	9,381,129

Student financial aid funds not included

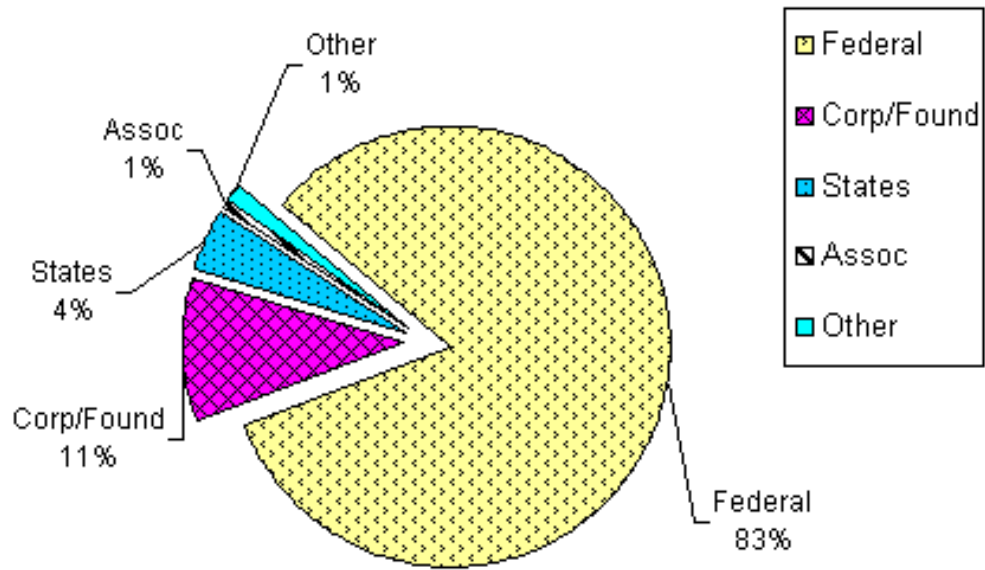
\*Oregon includes direct State funds of \$2.5M and federal flow-through funds of \$0.8M in FY 98-99



[back to top](#)

## Proposal Submissions

### CHART V - By Agency Type



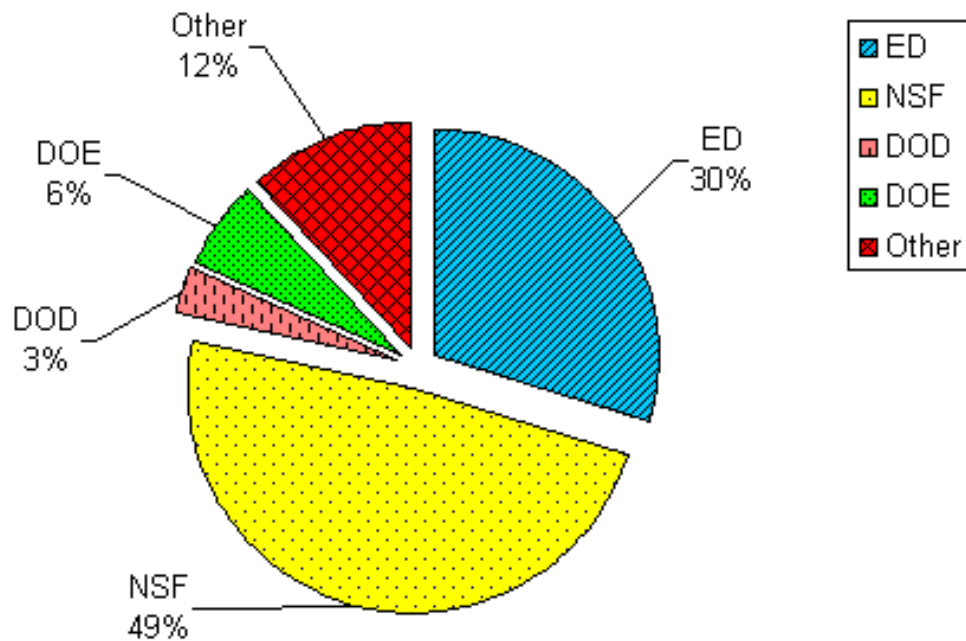
Total Year 1 Requests \$79,372,839

[back to top](#)

---

### CHART VI - By Federal Agency





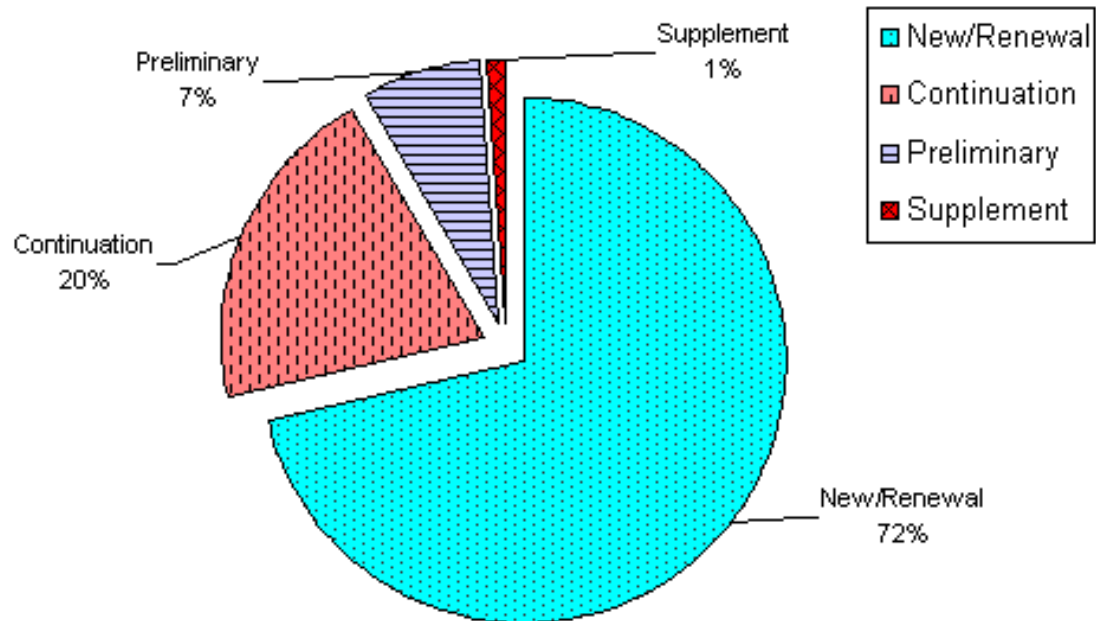
**Total Federal Requests \$65,982,772**

Federal Acronyms			
<b>ED</b>	<a href="#">Department of Education</a>	<b>DHHS</b>	<a href="#">Department of Health and Human Services</a>
<b>DOD</b>	<a href="#">Department of Defense</a>	<b>DOE</b>	<a href="#">Department of Energy</a>
<b>DOI</b>	<a href="#">Department of Interior</a>	<b>NFAH</b>	National Foundation on the <a href="#">Arts</a> and the <a href="#">Humanities</a>
<b>NSF</b>	<a href="#">National Science Foundation</a>	<b>USDA</b>	<a href="#">Department of Agriculture</a>

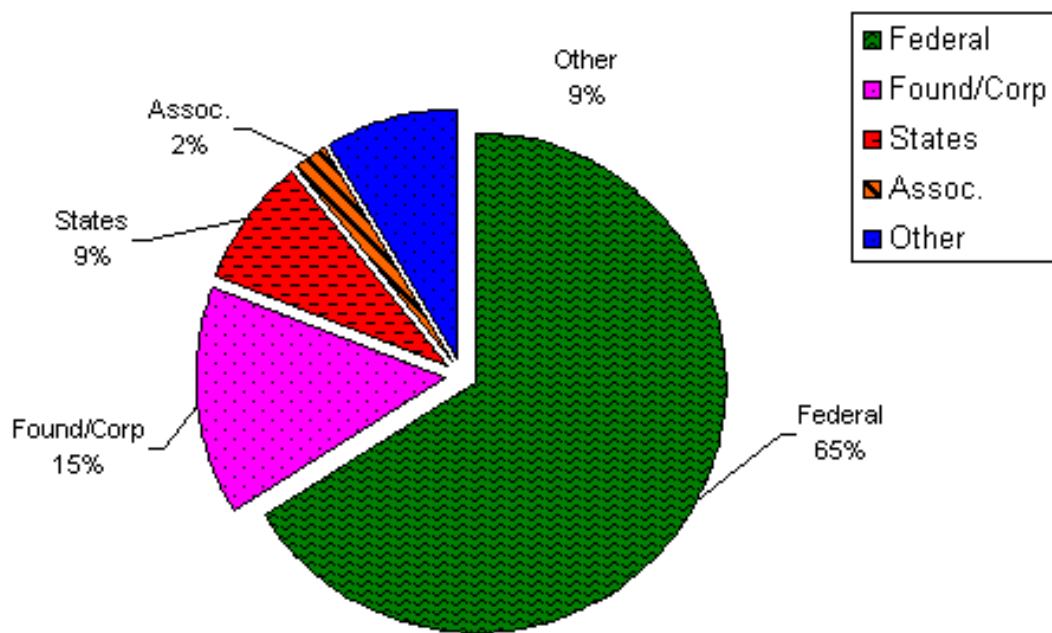
[back to top](#)

---

## CHART VII - Dollars By Application Type



**CHART VIII - Number By Agency Type**



[back to top](#)

## Expenditures

**TABLE III - By Major Organization Unit FY 96-99**

	<u>1995-96</u>	<u>1996-97</u>	<u>1997-98</u>	<u>1998-99</u>
School of Architecture & Allied Arts	\$1,155,771	\$1,604,301	\$1,328,138	\$1,529,390
College of Arts & Sciences	13,603,506	12,295,937	12,438,693	13,602,196
College of Education	16,243,287	17,847,265	17,567,306	19,418,696
School of Law	284,925	267,839	130,181	173,485
Museums	565,801	811,831	789,584	650,993
Libraries	109,077	97,982	262,756	812,835
Computing Center	322,724	134,794	217,345	357,474
Office of International Affairs	668,122	674,449	577,443	728,744
Graduate School	126,511	139,076	149,347	15,434
Research Institutes**	17,492,174	18,208,827	19,331,124	17,981,168
All Other Units	<u>1,788,098</u>	<u>1,214,394</u>	<u>1,138,621</u>	<u>1,324,367</u>
<b>TOTAL</b>	<b>\$52,359,996</b>	<b>\$52,082,301</b>	<b>\$53,930,538</b>	<b>\$56,594,782</b>

\*does not include student financial aid

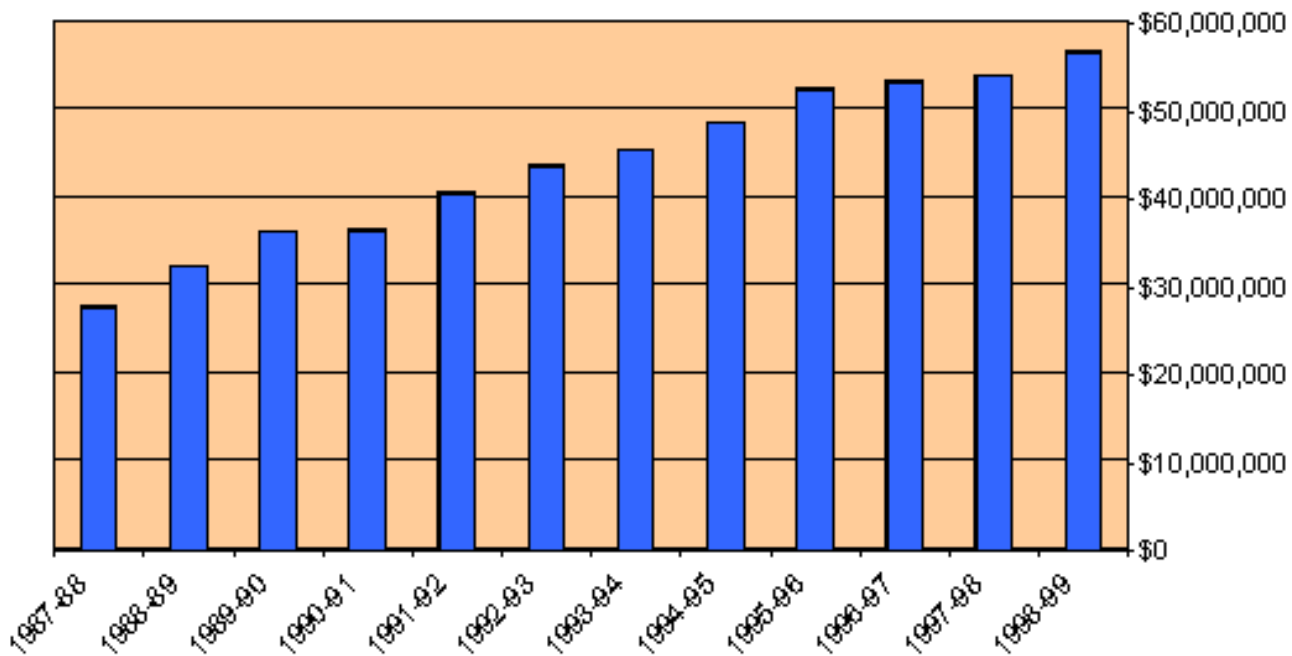
\*\*includes Institutes and Centers under CAS, AAA, and Vice Provost for Research

[back to top](#)

**TABLE IV - A Multi-Year Summary On Totals, % Change FY 88-99**

<u>Fiscal Year</u>	<u>Expenditures</u>	<u>% Change From Previous Year</u>
1987-88	\$27,579,308	
1988-89	32,285,462	17.10%
1989-90	36,209,569	12.20%
1990-91	36,384,721	0.50%
1991-92	40,552,632	11.50%
1992-93	43,688,764	7.70%
1993-94	45,564,951	4.30%
1994-95	48,666,606	6.80%
1995-96	52,359,996	7.60%
1996-97	53,296,694	1.80%

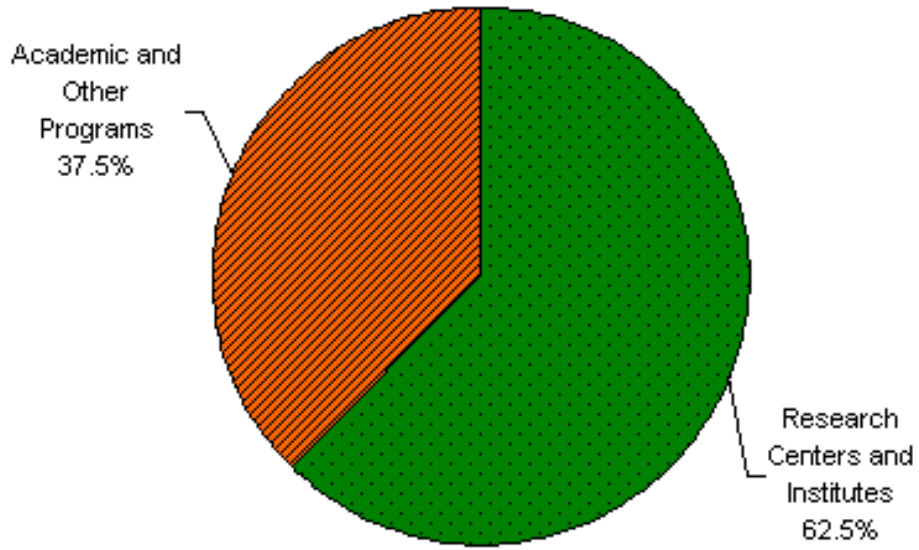
1997-98	53,930,538	1.18%
1998-99	56,594,782	4.94%



[back to top](#)

**TABLE V - By Recipient Group**

<b>Research Centers and Institutes</b>		<b>\$35,372,446</b>
Science Research Centers and Institutes	15,571,679	
Education Research Centers and Institutes	17,391,277	
Other Research Centers and Institutes	2,409,490	
<b>Academic and Other Programs</b>		<b>\$21,222,336</b>
College of Arts and Sciences	13,602,196	
School of Architecture and Allied Arts	1,529,390	
College of Education	2,027,418	
Other Programs	4,063,332	
<b>TOTAL</b>		<b>\$56,594,782</b>

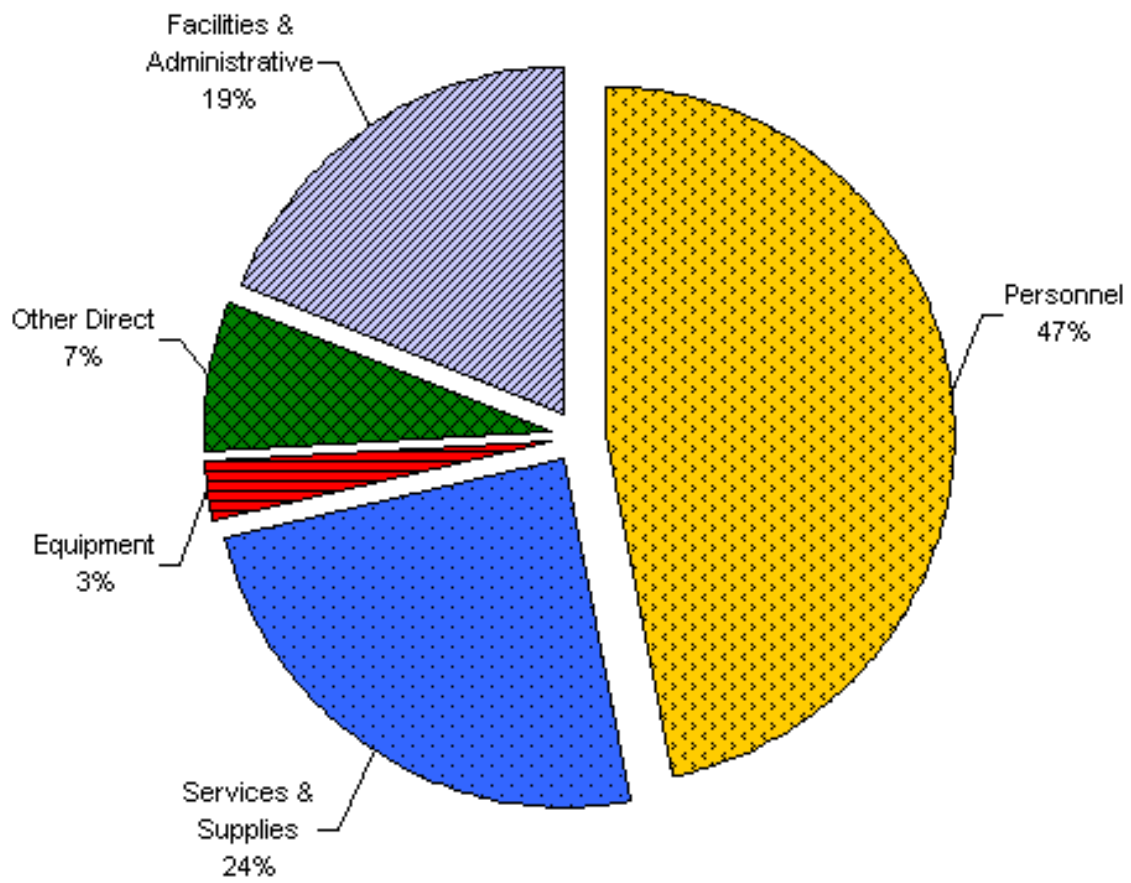


[back to top](#)

---

### CHART IX - By Cost Category

Personnel	\$26,616,503
Services & Supplies	13,778,037
Equipment	1,518,984
Other Direct	3,985,238
Facilities & Administrative	10,696,020
<b>Total</b>	<b>\$56,594,782</b>



[back to top](#)