

# Inside Oregon

FOR THE UNIVERSITY OF OREGON COMMUNITY

- [Home](#)
- [Publishing Schedule](#)
- [Submit News](#)
- [Archives](#)
- [Contact Us](#)

**January 5, 2009**

## People, not just a building, make for 'place'



A building designed to recapture the past may bring nostalgia, but the end product may not capture current realities of a place, says Kingston Heath, a professor of historic preservation at

the University of Oregon.

[Full story »](#)

### Announcements and Events

#### Contact Us

#### Published by:

Office of Communications  
Johnson Hall  
1098 East 13th Ave.

#### Mailing address:

Inside Oregon  
Office of Communications  
1239 University of Oregon  
Eugene, OR 97403-1239

## University already in compliance with smoke-free workplace law

The University of Oregon's policies already meet the revisions to Oregon's Smokefree Workplace Law, which took effect on Jan. 1.

[Full story »](#)

## UO professor testified before the Senate about green jobs

Cassandra Moseley, director of the Ecosystem Workforce Program in the Institute for a Sustainable Environment at the University of Oregon, testified Dec. 10 before the Committee on Energy and Natural Resources of the U.S. Senate at a hearing regarding investments in clean energy and natural resources projects and programs to create green jobs and to stimulate the economy.

[Full story »](#)

## Patrick Phillips wins Senior Scholar Award in Aging



University of Oregon biology professor Patrick Phillips is a winner of a 2008 Senior Scholar Award in Aging, a four-year grant totaling \$830,000, from The Ellison Medical Foundation.

### Telephone:

(541) 346-3134


### Fax:

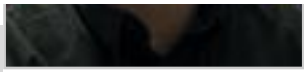
(541) 346-2537

### Email:

<mailto:uonews@uoregon.edu>

### Syndication

 [subscribe to RSS feed](#)



[Full story »](#)

## **UO geography professor Bartlein chosen as AAAS Fellow**

Patrick J. Bartlein, professor of geography at the University of Oregon, is among 486 members of the American Association for the Advancement of Science chosen by peers for the distinction of AAAS Fellow.

[Full story »](#)

## **Nominations, sponsors sought for outstanding undergraduate research projects**

UO teaching faculty whose students completed outstanding research projects and papers as part of their coursework during 2008 are encouraged to nominate and sponsor them in the 2009 Undergraduate Research Awards competition.

[Full story »](#)

## **Panel discussion proposals sought for spring conference**

The UO Department of Philosophy is accepting papers through Jan. 31 for panel topics for the

"Philosophical Inquiry into Pregnancy, Childbirth and Mothering" conference. The conference is scheduled from May 14 to 16, and will include keynote speakers Lisa Guenther of Vanderbilt University and Eva Kittay of State University of New York at Stony Brook.

[Full story »](#)

## Proposal deadline nearing for freshman programs

Faculty members are invited to submit proposals for Freshman Seminars and Freshman Interest Groups (FIGs) for the 2009-2010 academic year.

[Full story »](#)

## Yale Glee Club performs tonight



The Yale University Glee Club will kick off winter term at 8 p.m. tonight with a concert at Beall Concert Hall. The 80-

voice mixed chorus, on tour in the Northwest, will perform works by Guerrero, Grieg, Rachmaninoff, Pärt and new piece composed for the Glee Club by American composer Ned Rorem. Other pieces include arrangements of folk songs, spirituals and traditional college songs. The ensemble is under the direction of Yale School of Music Professor Jeffrey Douma.

[Full story »](#)

## Winter term publication schedule for Inside Oregon

Inside Oregon is published every two weeks during the academic year by the Office of Communications. The publishing schedule for winter term 2009 is listed below. For information about what types of stories to send our way, visit <http://duckhenge.uoregon.edu/io/submit>. Send submissions for consideration to [uonews@uoregon.edu](mailto:uonews@uoregon.edu). Please write "For Inside Oregon," in the subject line.

[Full story »](#)

Inside Oregon is the official newsletter for employees of the University of Oregon and is published biweekly.

The University of Oregon is an equal-opportunity, affirmative-action institution committed to cultural diversity and compliance with the Americans with Disabilities Act.

- A-Z Index
- Calendar
- Find People
- Maps
- Directions
- Visitors
- Contact
- [...](#)

**About the UO**

- [...](#)
- [...](#)
- [...](#)
- [...](#)
- [...](#)
- [...](#)





[Presidential Search](#)

## Highlights

[Request information](#) about UO admissions and enrollment

[UO once again lauded by U.S. News](#) as one of America's best colleges

[University of Oregon in Portland](#)

[UO Channel](#): Streaming Video and Podcasts

## Events

[Rock, Water, Fire, Earth and Sky by David N. Jones](#)

*Fri, November 7, 2008Sun, March 1, 2009*

[Laverne Krause Gallery Exhibition: Group show with John Gardner, Carly Matthews and Oran Miller](#)

*Mon, January 5, 2009Fri, January 9, 2009*

[Events Calendar](#)

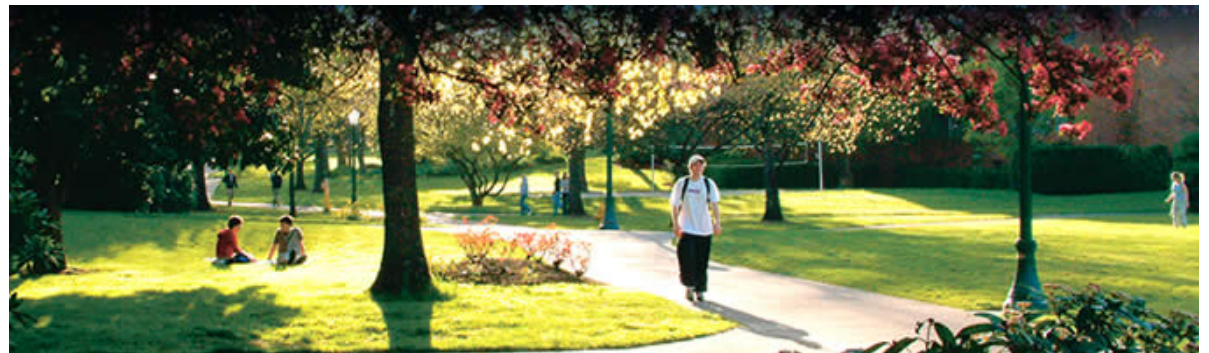
## Chapman Hall

Chapman Hall is home to the Robert Donald Clark Honors College, the Graduate School, and Creative Publishing.



## Living and Learning in a Sylvan Environment

Set in tree-dotted open spaces, our residence halls offer highly rated dining services, easy Internet access, and a supportive environment.

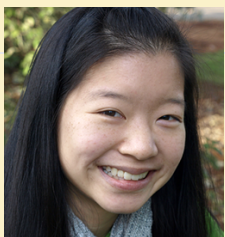


## Cutting-edge Research Facilities

Willamette Hall is the centerpiece of the Lorry I. Lokey Science Complex at the University of Oregon.



## Featured Story



### Green justice

UO senior strives to reduce social impacts of environmental ills

[Full Story](#)

Ne

### [University already in compliance with smoke-free workplace law](#)

Revised law prohibits smoking within 10 feet of building entrances and more

### [UO Museum of Natural and Cultural History to host volunteer open house](#)

Community members are encouraged to volunteer at the museum

### [UO makes first payment to state treasury for tax credits](#)

Legislation has created a 'spiral going in the right direction' for economic development

[More News](#)



### Charles H. Lundquist College of Business

The Lillis Business Complex is the only certified environmentally friendly building at a top-ranked business school.



### Choose the UO

The University of Oregon is dedicated to giving students a great education and a transformative experience.



### Campus

The University of Oregon campus features more than 3,000 trees of more than 500 species.







UNIVERSITY OF OREGON

- Home
- A-Z Index

- 
- Calendar
  - Find People
  - Maps
  - Directions
  - Visitors
  - Contact

About the UO

- 
- 
- 
- 
- 
- 
- 



---

Copyright © 2009 University of Oregon. All rights reserved.

Eugene, Oregon 97403 | (541) 346-1000

[Addresses](#) | [Privacy Policy](#) | [Feedback](#) |  [RSS Feeds](#)

# Inside Oregon

FOR THE UNIVERSITY OF OREGON COMMUNITY

- [. Home](#)
- [. Publishing Schedule](#)
- [. Submit News](#)
- [. Archives](#)
- [. Contact Us](#)

January 5, 2009

## People, not just a building, make for 'place'

A building designed to recapture the past may bring nostalgia, but the end product may not capture



*Kingston Heath*

current realities of a place, says Kingston Heath, a professor of historic preservation at the University of Oregon.

"It is a humanistic inquiry that recognizes that

### Headlines

[People, not just a building, make for 'place'](#)

[University already in compliance with smoke-free workplace law](#)

[UO professor testified before the Senate about green jobs](#)

[Patrick Phillips wins Senior Scholar Award in Aging](#)

[UO geography professor Bartlein chosen as AAAS Fellow](#)

buildings and settings, alone, do not make place," he said in a talk Dec. 13 at the annual meeting of the International Association for the Study of Traditional Environments in Oxford, UK. "People, in their interaction with the natural and built environment, make place."

Heath draws attention to a small group of architecture and urban design professionals who in recent years have begun to challenge the practice of designing modern structures that simply strive to produce mirages of the past. The emerging field is called "situated regionalism."

"This is a design-and-planning approach that considers the current human and environmental situation," Heath said in an interview before his talk. "We look at the regional filter -- the collective forces that shape place."

Heath's approach to the field will be more fully detailed in his upcoming book "Vernacular Architecture and Regional Design: Cultural Process and Environmental Response." His talk -- during the session "Regeneration and Tradition" chaired by UO architecture colleague Mark Gillem -- aimed to define vernacular architecture as a way to explores both current and past uses and needs of populations living in a particular place to better understand regional dynamics.

Also speaking in the session was UO architecture professor Howard Davis, who focused on the relationship between craftsmanship and the possibility of contemporary production drawing upon traditional building practice with modern methods. His material, from a graduate seminar, also will be part of a book, currently titled "Post-Industrial Craftsmanship in Buildings and Cities."

[Nominations, sponsors sought for outstanding undergraduate research projects](#)

[Panel discussion proposals sought for spring conference](#)

[Proposal deadline nearing for freshman programs](#)

[Yale Glee Club performs tonight](#)

[Winter term publication schedule for Inside Oregon](#)

## **Announcements and Events**



Inside Oregon is the official newsletter for employees of the University of Oregon and is published biweekly.

The University of Oregon is an equal-opportunity, affirmative-action institution committed to cultural diversity and compliance with the Americans with Disabilities Act.



# Inside Oregon

FOR THE UNIVERSITY OF OREGON COMMUNITY

- [Home](#)
- [Publishing Schedule](#)
- [Submit News](#)
- [Archives](#)
- [Contact Us](#)

January 5, 2009

## University already in compliance with smoke-free workplace law

The University of Oregon's policies already meet the revisions to Oregon's Smokefree Workplace Law, which took effect on Jan. 1.

The revised law prohibits smoking within 10 feet of entrances or exits to buildings, windows that open, and ventilation intakes of workplaces or public places.

"University policy already prohibits smoking within 10 feet of building entrances," said Stephanie Franklin, assistant director of human resources and chair of the campus smoke-free task force. "We want to remind the university community that there's been a change in state law."

### Headlines

[People, not just a building, make for 'place'](#)

[University already in compliance with smoke-free workplace law](#)

[UO professor testified before the Senate about green jobs](#)

[Patrick Phillips wins Senior Scholar Award in Aging](#)

[UO geography professor Bartlein chosen as AAAS Fellow](#)

In addition, facilities managed by University Housing and the Lillis Business Complex do not allow smoking within 25 feet of building entrances.

[Nominations, sponsors sought for outstanding undergraduate research projects](#)

[Panel discussion proposals sought for spring conference](#)

[Proposal deadline nearing for freshman programs](#)

[Yale Glee Club performs tonight](#)

[Winter term publication schedule for Inside Oregon](#)

**Announcements and Events**

Inside Oregon is the official newsletter for employees of the University of Oregon and is published biweekly.

The University of Oregon is an equal-opportunity, affirmative-action institution committed to cultural diversity and compliance with the Americans with Disabilities Act.

# Inside Oregon

FOR THE UNIVERSITY OF OREGON COMMUNITY

- [Home](#)
- [Publishing Schedule](#)
- [Submit News](#)
- [Archives](#)
- [Contact Us](#)

January 5, 2009

## UO professor testified before the Senate about green jobs

Cassandra Moseley, director of the Ecosystem Workforce Program in the Institute for a Sustainable Environment at the University of Oregon, testified Dec. 10 before the Committee on Energy and Natural Resources of the U.S. Senate at a hearing regarding investments in clean energy and natural resources projects and programs to create green jobs and to stimulate the economy.

"With our country in one of the most severe recessions in decades, we need a large infusion of government spending to stimulate the economy and dampen the effects of its rapid contraction on families, businesses and communities. It is critical

### Headlines

[People, not just a building, make for 'place'](#)

[University already in compliance with smoke-free workplace law](#)

[UO professor testified before the Senate about green jobs](#)

[Patrick Phillips wins Senior Scholar Award in Aging](#)

[UO geography professor Bartlein chosen as AAAS Fellow](#)

that Congress act now to prevent a prolonged recession by focusing on spending that can employ workers and businesses quickly," said Moseley.

Moseley's testimony focused on the restoration and stewardship of our nation's forests, grasslands and rivers; sustainable wood-based energy development; and the greening of federal facilities. According to Moseley, funding these activities offers significant opportunities to stimulate the economy in the short term by providing jobs, particularly in isolated, rural public lands communities that are likely to be hit particularly hard by this deep recession.

[Nominations, sponsors sought for outstanding undergraduate research projects](#)

[Panel discussion proposals sought for spring conference](#)

[Proposal deadline nearing for freshman programs](#)

[Yale Glee Club performs tonight](#)

[Winter term publication schedule for Inside Oregon](#)

## **Announcements and Events**

Inside Oregon is the official newsletter for employees of the University of Oregon and is published biweekly.

The University of Oregon is an equal-opportunity, affirmative-action institution committed to cultural diversity and compliance with the Americans with Disabilities Act.

# Inside Oregon

FOR THE UNIVERSITY OF OREGON COMMUNITY

- [Home](#)
- [Publishing Schedule](#)
- [Submit News](#)
- [Archives](#)
- [Contact Us](#)

January 5, 2009

## Patrick Phillips wins Senior Scholar Award in Aging

University of Oregon biology professor Patrick Phillips is a winner of a 2008 Senior Scholar Award in



Aging, a four-year grant totaling \$830,000, from The Ellison Medical Foundation.

Phillips, a member of the UO's Center for Ecology

### Headlines

[People, not just a building, make for 'place'](#)

[University already in compliance with smoke-free workplace law](#)

[UO professor testified before the Senate about green jobs](#)

[Patrick Phillips wins Senior Scholar Award in Aging](#)

[UO geography professor Bartlein chosen as AAAS Fellow](#)

and Evolutionary Biology, was among 26 recipients, chosen from 250 applicants, from U.S. institutions by the non-profit, Bethesda, Md.-based foundation. The organization provides philanthropy for basic research by established scientists in the biological sciences whose work contributes to understanding lifespan development processes and age-related diseases and disabilities.

Phillips is known for his emerging work on the study of the genetic basis of variation in aging, stress and longevity within natural populations. He studies nematodes, soil-dwelling worms that allow scientists to probe mutations in set of genes that can triple ordinary lifespan.

"The freedom and resources needed to generate basic genetic tools would not be possible without support from the Ellison Medical Foundation," Phillips said. "We are laying the basic genetic groundwork that will take nematode work out of the lab and into nature to understand ecological and evolutionary forces that determine genetic differences in aging among individuals."

[Nominations, sponsors sought for outstanding undergraduate research projects](#)

[Panel discussion proposals sought for spring conference](#)

[Proposal deadline nearing for freshman programs](#)

[Yale Glee Club performs tonight](#)

[Winter term publication schedule for Inside Oregon](#)

## **Announcements and Events**

Inside Oregon is the official newsletter for employees of the University of Oregon and is published biweekly.

The University of Oregon is an equal-opportunity, affirmative-action institution committed to cultural diversity and compliance with the Americans with Disabilities Act.



# Inside Oregon

FOR THE UNIVERSITY OF OREGON COMMUNITY

- [Home](#)
- [Publishing Schedule](#)
- [Submit News](#)
- [Archives](#)
- [Contact Us](#)

January 5, 2009

## UO geography professor Bartlein chosen as AAAS Fellow

Patrick J. Bartlein, professor of geography at the University of Oregon, is among 486 members of the American Association for the Advancement of Science chosen by peers for the distinction of AAAS Fellow.

The honor recognizes a person's scientifically or socially distinguished efforts to advance science or its applications. Bartlein was cited for his "major research contributions involving modeling and visualization of synoptic climatic and vegetation dynamics, including feedback effects, across timescales ranging from recent to geologic."

### Headlines

[People, not just a building, make for 'place'](#)

[University already in compliance with smoke-free workplace law](#)

[UO professor testified before the Senate about green jobs](#)

[Patrick Phillips wins Senior Scholar Award in Aging](#)

[UO geography professor Bartlein chosen as AAAS Fellow](#)

Bartlein joined the UO faculty in 1982. He earned his bachelor's, master's and doctoral degrees in geography from the University of Wisconsin at Madison.

New fellows will be presented with an official certificate and a gold-and-blue rosette pin at the AAAS Fellows Forum on Feb. 14 during the 2009 AAAS Annual Meeting in Chicago. This year's fellows, who also include four other scientists from Oregon institutions, were announced in the Dec. 19 issue of the journal Science. The tradition of AAAS Fellows began in 1874.

The non-profit AAAS is the world's largest general scientific society, and publisher of the journal Science. The organization was founded in 1848, and includes 262 affiliated societies and academies of science, serving 10 million individuals.

[Nominations, sponsors sought for outstanding undergraduate research projects](#)

[Panel discussion proposals sought for spring conference](#)

[Proposal deadline nearing for freshman programs](#)

[Yale Glee Club performs tonight](#)

[Winter term publication schedule for Inside Oregon](#)

## **Announcements and Events**

Inside Oregon is the official newsletter for employees of the University of Oregon and is published biweekly.

The University of Oregon is an equal-opportunity, affirmative-action institution committed to cultural diversity and compliance with the Americans with Disabilities Act.

# Inside Oregon

FOR THE UNIVERSITY OF OREGON COMMUNITY

- [Home](#)
- [Publishing Schedule](#)
- [Submit News](#)
- [Archives](#)
- [Contact Us](#)

January 5, 2009

## Nominations, sponsors sought for outstanding undergraduate research projects

UO teaching faculty whose students completed outstanding research projects and papers as part of their coursework during 2008 are encouraged to nominate and sponsor them in the 2009 Undergraduate Research Awards competition.

Sponsored by the UO Libraries, the annual competition honors undergraduates whose research projects and papers in upper-division courses achieve the highest quality. This year, funds are available for two awards of \$1,000 each and two of \$500 each. A faculty sponsor is required for all students entering the competition.

### Headlines

[People, not just a building, make for 'place'](#)

[University already in compliance with smoke-free workplace law](#)

[UO professor testified before the Senate about green jobs](#)

[Patrick Phillips wins Senior Scholar Award in Aging](#)

[UO geography professor Bartlein chosen as AAAS Fellow](#)

Evaluation criteria include the extensive, creative use of library services, resources and collections in any format. Papers should demonstrate originality of thought, mastery of content appropriate to class level, clear writing and overall quality of presentation. Winning papers will be deposited in Scholars' Bank, the university's online repository of academic research.

The deadline for applications is Jan. 31, so students should be alerted to this opportunity immediately. Complete information on the submission process is available at <http://libweb.uoregon.edu/general/libaward.html>.

The papers of last year's award winners were classes taught by UO faculty members Kevin Hatfield, Glenn May and Peggy Pascoe.

The 2009 Undergraduate Research Award program is made possible by the Jon and Lisa Stine Endowment and the Milton C. and Barbara B. Sparks Endowment.

[Nominations, sponsors sought for outstanding undergraduate research projects](#)

[Panel discussion proposals sought for spring conference](#)

[Proposal deadline nearing for freshman programs](#)

[Yale Glee Club performs tonight](#)

[Winter term publication schedule for Inside Oregon](#)

## **Announcements and Events**

Inside Oregon is the official newsletter for employees of the University of Oregon and is published biweekly.

The University of Oregon is an equal-opportunity, affirmative-action institution committed to cultural diversity and compliance with the Americans with Disabilities Act.

# Inside Oregon

FOR THE UNIVERSITY OF OREGON COMMUNITY

- [Home](#)
- [Publishing Schedule](#)
- [Submit News](#)
- [Archives](#)
- [Contact Us](#)

January 5, 2009

## Panel discussion proposals sought for spring conference

The UO Department of Philosophy is accepting papers through Jan. 31 for panel topics for the "Philosophical Inquiry into Pregnancy, Childbirth and Mothering" conference. The conference is scheduled from May 14 to 16, and will include keynote speakers Lisa Guenther of Vanderbilt University and Eva Kittay of State University of New York at Stony Brook.

The conference will be primarily philosophical in focus, but other fields, including sociology, psychology, women and gender studies and health care, are encouraged to participate.

For more information about the conference and

### Headlines

[People, not just a building, make for 'place'](#)

[University already in compliance with smoke-free workplace law](#)

[UO professor testified before the Senate about green jobs](#)

[Patrick Phillips wins Senior Scholar Award in Aging](#)

[UO geography professor Bartlein chosen as AAAS Fellow](#)

submitting proposals, visit <http://www.uoregon.edu/~uophil/events.html>.

The event is hosted by the UO and the Pregnancy, Childbirth, and Mothering Research Group.

Sponsorship is provided by the UO Graduate School, the Center for the Study of Women in Society, the Oregon Humanities Center, UO Department of Philosophy, and the Graduate Student Philosophy Club.

[Nominations, sponsors sought for outstanding undergraduate research projects](#)

[Panel discussion proposals sought for spring conference](#)

[Proposal deadline nearing for freshman programs](#)

[Yale Glee Club performs tonight](#)

[Winter term publication schedule for Inside Oregon](#)

**Announcements and Events**

Inside Oregon is the official newsletter for employees of the University of Oregon and is published biweekly.

The University of Oregon is an equal-opportunity, affirmative-action institution committed to cultural diversity and compliance with the Americans with Disabilities Act.



# Inside Oregon

FOR THE UNIVERSITY OF OREGON COMMUNITY

- [Home](#)
- [Publishing Schedule](#)
- [Submit News](#)
- [Archives](#)
- [Contact Us](#)

January 5, 2009

## Proposal deadline nearing for freshman programs

Faculty members are invited to submit proposals for Freshman Seminars and Freshman Interest Groups (FIGs) for the 2009-2010 academic year.

Freshman Seminars are small, interactive courses designed to introduce first-year students to thought-provoking and challenging subjects. Limited to 18-23 students, these three-credit seminars give freshmen a focused academic experience in an area of special interest to the faculty member. Topics range from African spirituality through dance to economics and philanthropy in the U.S. Ten Freshman Seminars are taught each term. For more information and the Freshman Seminar proposal form, visit <http://>

### Headlines

[People, not just a building, make for 'place'](#)

[University already in compliance with smoke-free workplace law](#)

[UO professor testified before the Senate about green jobs](#)

[Patrick Phillips wins Senior Scholar Award in Aging](#)

[UO geography professor Bartlein chosen as AAAS Fellow](#)

[firstyear.uoregon.edu/](http://firstyear.uoregon.edu/) or call 541-346-1136.

Proposals will be accepted through Jan. 12.

FIG instructors teach a one-credit College Connections seminar during fall term to 25 students who are co-enrolled in two lecture classes. The seminar is intended to explore related themes between the two classes and to connect freshmen to campus resources. Out-of-class activities, both social and academic, are encouraged. Past activities include an archaeological dig on the Oregon coast, visits to museums and galleries in Portland, and a special viewing of the Eugene Symphony. For more information and the FIG proposal form, visit <http://firstyear.uoregon.edu/> or call 541-346-1241.

[Nominations, sponsors sought for outstanding undergraduate research projects](#)

[Panel discussion proposals sought for spring conference](#)

[Proposal deadline nearing for freshman programs](#)

[Yale Glee Club performs tonight](#)

[Winter term publication schedule for Inside Oregon](#)

## **Announcements and Events**

Inside Oregon is the official newsletter for employees of the University of Oregon and is published biweekly.

The University of Oregon is an equal-opportunity, affirmative-action institution committed to cultural diversity and compliance with the Americans with Disabilities Act.

# Inside Oregon

FOR THE UNIVERSITY OF OREGON COMMUNITY

- [Home](#)
- [Publishing Schedule](#)
- [Submit News](#)
- [Archives](#)
- [Contact Us](#)

January 5, 2009

## Yale Glee Club performs tonight

The Yale University Glee Club will kick off winter term at 8 p.m. tonight with



*Yale University Glee Club*

a concert at Beall Concert Hall. The 80-voice mixed chorus, on tour in the Northwest, will perform works by Guerrero, Grieg, Rachmaninoff, Pärt and new piece composed for the Glee Club by American composer Ned Rorem. Other pieces include arrangements of folk songs, spirituals and traditional college songs. The ensemble is under the direction of

### Headlines

[People, not just a building, make for 'place'](#)

[University already in compliance with smoke-free workplace law](#)

[UO professor testified before the Senate about green jobs](#)

[Patrick Phillips wins Senior Scholar Award in Aging](#)

[UO geography professor Bartlein chosen as AAAS Fellow](#)

Yale School of Music Professor Jeffrey Douma.

The Yale Glee Club, founded in 1861, is Yale University's oldest musical organization and premier undergraduate mixed chorus. Its members are majors in music, mathematics, biology, philosophy, political science and art—all drawn together by a love of singing. The ensemble collaborates regularly with internationally renowned guest conductors and presents frequent premieres of new music.

Tickets for the concert are \$10 general admission and \$8 for students and seniors.

Other events at the School of Music and Dance:

### **Concerto-Aria Competition Concert**

Sunday, Jan. 11, 6:30 p.m.

Beall Concert Hall

\$5 general admission

Some of the UO's top student musicians compete to perform in the school's annual spring Concerto Concert. Selections will include solo music for violin, voice, horn, oboe, marimba, piano, bassoon and cello.

### **Aaron Shragge, guest artist: trumpet and shakuhachi**

Monday, Jan. 12, 8 p.m.

Collier House, 13th Avenue & University Street

\$10 general admission; \$8 students and seniors

Performing Japanese and North Indian classical music; the Shakuhachi (bamboo flute) was played by monks. The music was used as a meditative practice called Sui Zen, and dates back almost a thousand years. North Indian Classical music is one of the oldest musical traditions on the planet.

The Frohnmayer Music Building and Beall Concert Hall are located at 961 E. 18th Ave. Tickets are available at the door, unless otherwise noted.

[Nominations, sponsors sought for outstanding undergraduate research projects](#)

[Panel discussion proposals sought for spring conference](#)

[Proposal deadline nearing for freshman programs](#)

[Yale Glee Club performs tonight](#)

[Winter term publication schedule for Inside Oregon](#)

## **Announcements and Events**

For more information on the School of Music and Dance, or to receive a complete calendar of events, call the university music school weekdays, 541-346-5678, or visit [music.uoregon.edu](http://music.uoregon.edu).

Inside Oregon is the official newsletter for employees of the University of Oregon and is published biweekly.

The University of Oregon is an equal-opportunity, affirmative-action institution committed to cultural diversity and compliance with the Americans with Disabilities Act.

# Inside Oregon

FOR THE UNIVERSITY OF OREGON COMMUNITY

- [Home](#)
- [Publishing Schedule](#)
- [Submit News](#)
- [Archives](#)
- [Contact Us](#)

January 5, 2009

## Winter term publication schedule for Inside Oregon

Inside Oregon is published every two weeks during the academic year by the Office of Communications. The publishing schedule for winter term 2009 is listed below. For information about what types of stories to send our way, visit <http://duckhenge.uoregon.edu/io/submit>. Send submissions for consideration to [uonews@uoregon.edu](mailto:uonews@uoregon.edu). Please write "For Inside Oregon," in the subject line.

Jan. 20 (deadline Jan. 12)  
Feb. 2 (deadline Jan. 26)  
Feb. 16 (deadline Feb. 9)  
March 2 (deadline Feb. 26)

### Headlines

[People, not just a building, make for 'place'](#)

[University already in compliance with smoke-free workplace law](#)

[UO professor testified before the Senate about green jobs](#)

[Patrick Phillips wins Senior Scholar Award in Aging](#)

[UO geography professor Bartlein chosen as AAAS Fellow](#)

FINAL WINTER TERM ISSUE

March 16 (deadline March 9)

[Nominations, sponsors sought for outstanding undergraduate research projects](#)

[Panel discussion proposals sought for spring conference](#)

[Proposal deadline nearing for freshman programs](#)

[Yale Glee Club performs tonight](#)

[Winter term publication schedule for Inside Oregon](#)

**Announcements and Events**

Inside Oregon is the official newsletter for employees of the University of Oregon and is published biweekly.

The University of Oregon is an equal-opportunity, affirmative-action institution committed to cultural diversity and compliance with the Americans with Disabilities Act.