

2008 PORT TRANSPORTATION IMPROVEMENT PLAN

Approved 1/9/2008

Acknowledgments

Port Transportation Improvement Plan Team

Bill Allen
Bill Bach
Chris Corich
Sebastian Degens
Rick Finn
Vince Granato
Sue Haynes
Phil Healy

Sugie Joseph
Scott King
Susie Lahsene
Jim Laubenthal
Robin McCaffrey
Annette Price
Chris White
Kathryn Williams

TABLE OF CONTENTS

Introduction	2
Goal and Objectives.....	4
Assumptions	5
Project Funding.....	5
Port Priority Projects	6
Cost Estimate Rating	10
Project List	11
Priority Project Map	24
Priority Project Reports.....	25
PDX/PIC Area Map.....	51
PDX/PIC Project Reports	52
Marine Terminal and Rivergate Area Map	62
Marine Terminal and Rivergate Area Project Reports	63
Troutdale Area Map.....	70
Troutdale Area Project Reports	71
T2/Swan Island Area Map	75
T2/Swan Island Area Project Reports.....	76
Appendix: Priority Marine Terminal Capital Projects.....	A-1
Appendix: Aviation External Funding Project List.....	B-1

4 INTRODUCTION

The Port of Portland's mission is to provide competitive cargo and passenger access to regional, national and international markets while enhancing the region's quality of life.

For the most part, the Port does not own or control the surrounding transportation system that provides access to its facilities.¹ Good access to Port properties and marine and aviation facilities is a competitive advantage for the region's businesses and residents. The region's economy depends on efficient movement to and through the marine and aviation gateways. Therefore, improvements to the road, rail, water and transit systems that provide access to Port facilities are of interest to the Port and to the region's and state's businesses.

Freight movement has historically played a large role in the development of the Portland area economy. Due to its location at the confluence of the Willamette and Columbia Rivers with access to the Pacific Ocean, Portland has long served as a major shipment point in the Pacific Northwest. In addition to the navigable waterways, Portland is also served by two Class 1 rail lines, two interstate highways and a network of other major roads. All of these factors contribute to Portland's development as a major distribution center for freight.

Several recent studies have substantiated the importance of investing in the transportation system and linked those investments to the region's and state's economic health. The Cost of Congestion to the Economy of the Portland Region (March, 2007), sponsored by a consortium of public agencies and private businesses, confirms the transportation dependency of the region's economy and affirms that the region's competitiveness is largely dependent upon its role as a gateway and distribution center. The study determined that improvements in the transportation system produce a 2:1 return for the economy.

¹ Roads owned and maintained by the Port of Portland include: NE Airport Way (between I-205 and the Airport terminal), 82nd Ave. (north of NE Alderwood Rd.), NE Frontage Rd., NE Mt. Hood Ave. (north of Airport Way), NE AirTrans Way, part of N Time Oil Rd., T-5 access road, T-6 access roads, old Marine Dr. (west of N Portland Rd.), Ramsey St. (west of Rivergate Blvd.) and other misc. access roads.

The *Commodity Flow Forecast Update (2006)* produced by DRI/WEFA predicts a doubling of freight volume moving throughout the region in 30 years. This kind of growth will dramatically impact Port facilities and will require significant investments to ensure access to them. The magnitude of regional transportation access investments and their financing are addressed through Metro's Regional Transportation Plan (RTP), Metro's Transportation Improvement Program (MTIP) and the State Transportation Improvement Plan (STIP). Access needs critical to Port facilities are reflected in the Port Transportation Improvement Plan (PTIP).

✚ GOAL AND OBJECTIVES

The Port Transportation Improvement Plan is a multimodal compilation of marine terminal, road, rail, waterway, transit, bicycle, and pedestrian projects, normally identified through transportation and other studies managed by or in coordination with the Port. The plan also identifies a transportation demand management program to be implemented. The plan is designed to organize transportation and transportation-related improvement needs. The goal and objectives of the Port's Transportation Improvement Plan are as follows:

Goal:

Maintain the strategic advantage provided by the transportation system in this region by addressing the surface access needs of businesses and passengers trying to reach national and international markets via Port facilities.

Objectives:

- Identify 5, 10, and 20-year surface transportation system investments that provide and maintain access to Port facilities and property developments.
- Develop a long-range vision for the financial implications of transportation system investments, and integrate this long-range planning with the Port's 5-year capital program.
- Increase public awareness of Port access needs on the city, state and private rail carrier systems.
- Facilitate coordination between the Port and appropriate public and private transportation system stakeholders to make improvements and investments that enhance access to national and international markets for the region's businesses and residents.

ASSUMPTIONS

Contained within this document are projects generally developed from transportation studies based on the region's assumptions about population and employment growth. These assumptions, developed by Metro in cooperation with all the jurisdictions in the region, are allocated to the land use designations of locally adopted comprehensive plans. As population and employment assumptions are updated, the needs of the transportation system are updated. The Port and other local governments participate in transportation systems studies to determine what parts of the surface transportation system (road/transit/rail/bicycle/pedestrian) are insufficient to meet the regional assumptions about passenger and freight movement.

This document represents the Port's assessment of the transportation system and the infrastructure necessary in order to achieve its mission. The PTIP helps the Port focus its transportation priorities and lets the public and the Port's partner jurisdictions know which projects will need cooperative efforts.

PROJECT FUNDING

In recent years, the overall demand for transportation improvements at the local, state and federal levels has exceeded available resources. The PTIP defines Port transportation needs over a 20-year time frame. Some of the transportation improvements are on Port properties, and some are on systems that are the legal responsibility of others but serve Port facilities.

Funding for projects in the PTIP is expected from a number of sources, including the jurisdictions that have legal responsibility for the system and private interests that may benefit from the improvements. The project detail sheets identify the funding sources anticipated to implement these projects. Funds attributed to specific jurisdictions reflect specific funding commitments. Funds designated as "Committed Port Share" are in the Port's approved budget. "Forecasted Port Share" indicates funds which the Port will obtain, whether from its own revenues or with funding from other sources. Where funds are listed as 'Unfunded', either a funding strategy has not yet been defined for the improvement, or changes in the project scope have impacted the existing funding strategy.

✚ PORT PRIORITY PROJECTS

Port facilities support an array of transportation modes and present a wide range of project needs: marine and aviation terminal, road, rail, waterway, transit, bicycle and pedestrian improvements. The PTIP maps show surface transportation projects that improve or provide access to marine and aviation terminals. However, the ability of the marine and aviation terminals to provide the region's businesses with access to markets also depends on the transportation system within the terminal facilities themselves.

Many of the Port's priority transportation projects will involve funding from other agencies and/or the private sector. A significant portion of these projects are off Port property on facilities owned and maintained by other jurisdictions and in areas that are significant transportation bottlenecks for access to national and international markets via Port facilities. Due to size, type and use of the facility, a cooperative funding arrangement among the affected parties will be necessary to adequately fund and implement these projects.

For surface transportation projects, the following criteria determine which projects have been considered for cooperative funding:

1. The project improves access to Port terminals or properties and is critical to Port strategic development in either a) the next ten years, or b) the next twenty years, with aspects of the project required to begin within the next ten years.
2. The project also serves other city, regional, state or national transportation and/or economic functions.
3. The project is included or, prior to construction, will be included in the Regional Transportation Plan (RTP).
4. The project meets the eligibility criteria for federal funding.

Priority Projects Involving Other Funding Sources¹	Project Cost²	Map ID #
Air Cargo Access	\$11,147,000	2,3,4,5,6
Channel Deepening	\$150,573,000	22
Columbia Blvd. Northbound Ramps on I-5	\$69,000,000	10
Columbia Blvd., Lombard St. Improvements at MLK	\$2,200,000 ³	9
I-205 Interchange Improvement (NB On-Ramp)	\$27,200,000	7
I-205 Interchange Improvement (SB Off-Ramp)	\$2,740,000	8
Intelligent Transportation System (ITS) Improvements	\$1,480,000	1,13,48
Leadbetter St. Extension/Overcrossing	\$11,323,500	19
257 th interchange at I-84 improvement	\$9,400,000	44
North Lombard St. Improvement	\$3,610,000	14
238 th Ave. Extension	\$14,500,000	45
223 rd Ave. Widening	\$3,667,000	43
Sundial Road Reconstruction	\$772,600	42
Barnes to Terminal 4 Rail	\$3,000,000	20
Barnes Yard to Bonneville Yard Trackage	\$11,912,000 ⁴	18
Kenton Rail Line Upgrade	\$25,382,000 ⁴	25
Ramsey Rail Yard Complex	\$13,900,000 ⁴	15
SRG Rail Yard Expansion	\$9,821,000	16
Terminal 2 Rail Improvements	\$1,535,000	47
Cathedral Park Quiet Zone	\$3,500,000	23
Portland Bulk Terminal 4 th Rail Loop	\$7,000,000	17

- Notes:
1. Projects are not listed in order of priority and do not include aviation or non-rail marine terminal projects.
 2. Refer to Priority Reports for funding break-out.
 3. Costs for reconnaissance.
 4. Project cost shown is per I-5 Rail Capacity Study (2003), not per independent Port estimate.

For priority marine terminal and aviation capital projects, the following criteria determine which projects have been considered for cooperative funding:

1. The project improves operation of Port terminals or airports and is critical to Port strategic development in the next ten years.
2. The project provides significant economic benefit to the region and state by a) improving market access for all terminal or airport users, or b) improving the operation of port tenant facilities that provide a significant number of jobs.

These projects are consistent with the Port's adopted budget and long term capital forecast.

Port Priority Marine Terminal Capital Projects Involving Other Funding Sources¹	Project Cost	Map ID#
T-6 Container Crane Purchase	\$10,900,000	27
T-6 Optical Character Recognition	\$2,700,000	28
T-6 Wireless Network and Mobile Data Units	\$300,000	29
T-6 Berth Deepening and Scour Protection	\$3,400,000	30
Marine Access Control and Surveillance	\$3,400,000	31
T-6 Crane Rail Improvements and Tie Backs	\$4,600,000	32
T-6 Container Dock Extension	\$19,500,000	33
T-6 Additional Post-Panamax Cranes	\$20,000,000	34
T-6 Yard Equipment	\$1,750,000	37
T-6 Container Crane Modernization	\$4,000,000	38
T-6 Auto Facility Upgrade	\$10,200,000	35
Terminal 4 Automobile Yard Expansion	\$2,500,000	36
Terminal 4 Barge Facility Relocation	\$8,000,000	39
Berth 503 Dock Rehabilitation	\$4,700,000	24
Berth Deepening: Berths 401, 501, and 503	\$1,600,000	40
Terminal 4 Pipeline Infrastructure	\$5,600,000	26

Notes: 1. Projects are not listed in order of priority.

Priority Aviation Capital Projects Involving Other Funding Sources¹	Project Cost	Map #
TTD relocation of Taxiway B, Phase 1 & 2	\$2,200,000	41
HIO High Speed Exits	\$2,430,000	49
HIO Taxiway A3 extension	\$2,200,000	50
PDX North Runway rehabilitation	\$11,200,000	11
PDX North Runway extension	\$61,000,000	12
PDX ITS	\$1,000,000	1
Mulino Airport Development Improvements	\$2,200,000	51

Notes: 1. Projects are not listed in order of priority.

✚ PROJECT REPORTS AND MAPS

The following pages contain a list of all projects, followed by maps of project locations and individual project reports. The first map and group of reports are for *priority projects* in all locations. Following the priority projects are the other projects by area, along with area maps. It should be noted that the area maps include both priority and non-priority projects. The project reports include such details as a brief description, purpose, funding information, cost estimate rating, and time frame.

Acronym Key:

PIC	Portland International Center
PDX	Portland International Airport
WHI	West Hayden Island
TRIP	Troutdale Reynolds Industrial Park
TTD	Troutdale Airport
HIO	Hillsboro Airport
4S9	Mulino Airport

Time Frame:

Projects identified in the PTIP are shown as occurring in the 5, 10, or 20-year time frames. Project within the 5-year time frame are expected to occur within the next five years. Projects within the 10-year time frame are expected to occur between five and ten years from the time of PTIP adoption. Similarly, projects within the 20-year time frame are expected to occur between 10 and 20 years from the time of PTIP adoption.

The time frames shown are estimates. The listing of a project in a given period does not ensure that it will be constructed in that time frame. Rather, projects will be constructed when transportation/business needs support them and when funding becomes available. For many projects, this need has already been identified. However, others depend on a variety of factors, including development at Port facilities and the changing challenges of the region's transportation system.

Cost Estimate Rating

When applicable, the project reports shown in the PTIP contain cost estimate ratings. The purpose of the rating is to provide those using the estimates with a qualitative measure of its precision for a project. Since the precision of an estimate is a function of the clarity of project scope (scope accuracy) and the level of effort expended to produce the desired estimate (engineering effort), the rating scale is designed to reflect both of these factors. Below are the definitions of each of these categories.

Scope Accuracy

Level 1

Project scope is defined.

Level 2

Project scope is conceptual. Scope lacks detail due to potential permit requirements; unknown project conditions; limited knowledge of external impacts.

Level 3

Project scope has limited detail.

Engineering Effort

Level A

Preliminary engineering has been performed. Technical information is available, engineering calculations have been performed; clear understanding of the materials size and quantity needed to execute the job. Schedule is understood; staff and permitting is fairly clear. Contingency generally ranges between 15% and 20%.

Level B

Conceptual engineering has been performed. Technical information is available, rough engineering calculations may have been performed, or similar information from previous similar work is compared and used.

Contingency generally ranges between 20% and 30%.

Level C

No engineering has been performed.

Limited technical information is available and/or limited analysis has been performed. Contingency generally ranges between 40% and 50%.

Note: Projects that are the responsibility of a private entity or are the responsibility of another agency generally are not given cost estimate ratings. The costs listed are for the year the estimate was done. Due to cost escalation and other factors the projected costs will vary over time.

PTIP MASTER PROJECT LIST

Map ID	Project Name	Project Description	Purpose	Time Frame	Total Cost	Priority	Area Map
1	PDX ITS	Intelligent Transportation Systems in the PDX area.	Improve traveler information and automated vehicle identification system at PDX.	10	\$1,000,000	<input checked="" type="checkbox"/>	Priority Map
2	Cornfoot Rd./Airtrans Way Signal Improvement	Construct new traffic signal.	Retain efficient movement of traffic to PDX properties.	5	\$650,000	<input checked="" type="checkbox"/>	Priority Map
3	Alderwood/Columbia Blvd. Intersection Improvements	Widen and signalize intersection at Alderwood Rd. and Columbia Blvd.	Provide transportation link to the cargo area located within the south airport area and to support Columbia Corridor freight movement.	5	\$1,460,000	<input checked="" type="checkbox"/>	Priority Map
4	Alderwood Rd. Intersections Improvement	Improve Alderwood Rd./Cornfoot Rd. and Alderwood Rd./82nd Ave. intersections. Add signals, turn lanes.	Provide efficient movement of traffic to PDX and PIC properties.	5	\$1,528,000	<input checked="" type="checkbox"/>	Priority Map
5	47th Ave. (at Columbia Blvd.) Intersection Improvements	Widen and channelize NE 47th Ave. intersection at NE Columbia Blvd.	Provide improved traffic flow to air cargo facilities located within the south airport area.	5	\$4,100,000	<input checked="" type="checkbox"/>	Priority Map
6	82nd Ave. SB Ramp/Columbia Blvd.	Construct additional through lane in each direction. Add a new turn lane. Signalize.	Mitigate PDX Growth Impacts.	10	\$3,409,000	<input checked="" type="checkbox"/>	Priority Map
7	I-205 Interchange - NB On-Ramp at Airport Way	New I-205 NB on-ramp and/or other improvements at I-205/Airport Way interchange.	Provide additional capacity for anticipated growth in area traffic.	10	\$27,200,000	<input checked="" type="checkbox"/>	Priority Map
8	I-205 Interchange - SB Off-Ramp at Airport Way	Widen I-205 SB off-ramp at Airport Way.	Provide additional capacity for anticipated growth at interchange.	5	\$2,740,000	<input checked="" type="checkbox"/>	Priority Map

Map ID	Project Name	Project Description	Purpose	Time Frame	Total Cost	Priority	Area Map
9	Columbia Blvd./Lombard St. Improvements at MLK	Improve freight movement between Columbia Blvd. and Lombard St.	Improve connectivity and better distribute freight traffic between Columbia Blvd. and Lombard St. Improve rail network performance on the Kenton mainline in the vicinity of 11th Avenue.	5	\$16,835,000	<input checked="" type="checkbox"/>	Priority Map
10	I-5/Columbia Blvd. Improvement	Construct a full interchange at Columbia Blvd. or the functional equivalent.	Improve connections between Columbia Blvd. and I-5 for trucks.	10	\$69,000,000	<input checked="" type="checkbox"/>	Priority Map
11	PDX North Runway Rehabilitation	Rehabilitate the North Runway.	Keep the runway in safe operating condition.	5	\$11,200,000	<input checked="" type="checkbox"/>	Priority Map
12	PDX North Runway Extension	Extend the length of the North Runway by up to 1,828 feet.	Preserve international and domestic long haul service while south runway is closed.	5	\$61,000,000	<input checked="" type="checkbox"/>	Priority Map
13	Rivergate ITS	Intelligent Transportation System in Rivergate.	Improve traffic efficiency in Rivergate by connecting information about the roadway system to ODOT's Highway ITC systems.	5	\$480,000	<input checked="" type="checkbox"/>	Priority Map
14	Widen Lombard-Purdy to Simmons	Widen North Lombard St. from 600 feet south of North Rivergate Blvd. to the Columbia Slough. Add bike lanes and sidewalks.	Increase multi-modal capacity to accommodate growth in surrounding development.	5	\$3,610,000	<input checked="" type="checkbox"/>	Priority Map
15	Ramsey Rail Improvements	Construct up to six tracks and a second lead into/through the Ramsey Rail Yard. Project adds rail storage and staging separate from main line tracks.	Support trade related transportation infrastructure, policy, and services by constructing a key rail project to increase Rivergate and regional capacity, and to allow dual unit train access to Terminal 5.	5	\$13,900,000	<input checked="" type="checkbox"/>	Priority Map

Map ID	Project Name	Project Description	Purpose	Time Frame	Total Cost	Priority	Area Map
16	SRG Rail Yard Expansion	Construct a second lead and five storage tracks in South Rivergate Yard	Increase unit train capacity to Terminal 5 and other South Rivergate facilities.	5	\$9,821,000	<input checked="" type="checkbox"/>	Priority Map
17	Portland Bulk Terminal 4th Rail Loop	Design and construct a fourth rail loop within Portland Bulk Terminal's potash export facility at Terminal 5.	The project will increase the throughput capacity by facilitating the receipt and dispatch of unit trains.	5	\$7,000,000	<input checked="" type="checkbox"/>	Priority Map
18	Barnes Yard to Bonneville Yard Trackage	Construct additional unit train trackage (approximately 16,000 linear feet) between Bonneville and Barnes rail yards.	Address limited Rivergate staging area for unit trains approaching or departing the marine terminals. Reduce switching bottlenecks, limits to terminal access and other operational conflicts in the Columbia Corridor.	5	\$11,912,000	<input checked="" type="checkbox"/>	Priority Map
19	Leadbetter St. Extension/Overcrossing	Complete Leadbetter St. loop to Marine Dr. (Pacific Gateway/Terminal 6 intersection) including a road bridge over rail line.	Provide access to developing properties and eliminate rail/auto conflict at future intersection.	5	\$11,323,500	<input checked="" type="checkbox"/>	Priority Map
20	Barnes to Terminal 4 Rail	Provide a new track from Barnes Yard to Terminal 4	Improve rail access to Terminal 4.	5	\$3,000,000	<input checked="" type="checkbox"/>	Priority Map
21	T-5 Unit Rail Loop #3	Construct one additional loop track.	Increase rail storage and rail handling capability of existing bulk terminal.	5	\$3,534,000	<input checked="" type="checkbox"/>	Priority Map
22	Channel Deepening	Deepen the Columbia River channel to 43 feet between the mouth of Columbia River and Portland/Vancouver Harbor.	Serve panamax bulk vessels and post-Panamax container vessels.	5	\$150,573,000	<input checked="" type="checkbox"/>	Priority Map
23	Cathedral Park Quiet Zone	Address rail switching noise by improving multiple public rail crossings in the St. Johns Cathedral Park area.	To allow auto import operations to continue to grow in N. Portland and improve neighborhood livability.	5	\$3,500,000	<input checked="" type="checkbox"/>	Priority Map

Map ID	Project Name	Project Description	Purpose	Time Frame	Total Cost	Priority	Area Map
24	Berth 503 Dock Rehabilitation	Repair the priority components of Berth 503 to address advanced corrosion on the girders and beams which support the dock structure.	Make significant and necessary life-extending repairs to Berth 503 to keep the structure serviceable for the next 30 years.	5	\$4,700,000	<input checked="" type="checkbox"/>	Priority Map
25	Kenton Rail Line Upgrade	Upgrade existing track to second main track with new double track from Peninsula Junction to I-205 and increase track speeds between North Portland, Peninsula Junction, to Reynolds on UP's Kenton Line. Part of triangle project with ODOT.	Expand rail capacity and reduce delays for greater efficiency.	10	\$25,382,000	<input checked="" type="checkbox"/>	Priority Map
26	Terminal 4 Pipeline Infrastructure	Design and build a new common user pipeline system.	Develop a new pipeline system to to serve as many as four potential liquid bulk tenants over Berth 401.	5	\$5,600,000	<input checked="" type="checkbox"/>	Priority Map
27	Terminal 6 Container Crane #6381 Purchase	Purchase a post-panamax crane to bring the number of post-panamax cranes at Terminal 6 to four. Scheduled for delivery in 2008	Facilitate efficient handling of larger container ships.	5	\$10,900,000	<input checked="" type="checkbox"/>	Priority Map
28	Terminal 6 Optical Character Recognition	Install Optical Character Recognition software and hardware.	Automate data capture at the truck gates.	5	\$2,700,000	<input checked="" type="checkbox"/>	Priority Map
29	Terminal 6 Wireless Network and Mobile Data Units	Install a wireless network covering the Terminal 6 facility and provide new mobile data units (MDUs) to send data over that network.	Improve operational efficiencies at Terminal 6.	5	\$300,000	<input checked="" type="checkbox"/>	Priority Map
30	T-6 Berth Deepening and Scour Protection	Construct scour protection and deepen Terminal 6 container berths.	Permit better utilization for vessels calling Terminal 6.	5	\$3,400,000	<input checked="" type="checkbox"/>	Priority Map
31	Marine Access Control and Surveillance	Install new security gate systems at at Terminals 4 and 6.	Strengthen access gate and perimeter security at Terminals 4 and 6.	5	\$3,400,000	<input checked="" type="checkbox"/>	Priority Map

Map ID	Project Name	Project Description	Purpose	Time Frame	Total Cost	Priority	Area Map
32	T-6 Crane Rail Improvements and Tie Backs	Construct additional crane rail tie-backs to Berth 604 east and Berth 605, and add 100 feet of crane rail to Berth 604 west.	Improve the strength of the dock and provide crane rail necessary to handle two post-panamax vessels at the same time.	5	\$4,600,000	<input checked="" type="checkbox"/>	Priority Map
33	Terminal 6 Container Dock Extension	Extend Berth 605 upstream by 600 feet or more.	Lengthen the berth to preserve Terminal 6 as a three-berth facility capable of handling longer vessels.	5	\$19,500,000	<input checked="" type="checkbox"/>	Priority Map
34	Terminal 6 Additional Post-Panamax Cranes	Acquire two post-panamax cranes in addition to Crane #6381.	Provide a two-berth post-panamax vessel capability at Terminal 6.	5	\$20,000,000	<input checked="" type="checkbox"/>	Priority Map
35	Terminal 6 Auto Facility Upgrades	Modify Berth 607 dock, expand the rail ramp, study rail crossing feasibility at Terminal 6.	Increase operating efficiencies at the Honda facility.	5	\$10,200,000	<input checked="" type="checkbox"/>	Priority Map
36	Terminal 4 Automobile Yard Expansion	Design and construct six acres of porous pavement parking for the storage of imported automobiles.	The project will provide additional land to meet auto storage capacity needs of Toyota, supporting the Port's automobile import business line.	5	\$2,500,000	<input checked="" type="checkbox"/>	Priority Map
37	Terminal 6 Yard Equipment	Purchase eight (8) container chassis and three (3) reachstackers.	The newer container chassis allow for a decrease in vessel turn-around time. The new reachstackers will increase hours between down times for maintenance.	5	\$1,750,000	<input checked="" type="checkbox"/>	Priority Map

Map ID	Project Name	Project Description	Purpose	Time Frame	Total Cost	Priority	Area Map
38	Terminal 6 Container Crane Modernization	On Crane 6379, upgrade electronics and provide new programmable logic controllers for the motor drives. On Crane 6378 (heavy lift crane) upgrade the electronics, provide new motor drive. Relocate in the line-up and paint the trolley girder beam.	This project will modernize some of the Port's older container cranes, improving efficiencies in the transfer of containerized cargo between four modes of transportation: ocean vessel, rail, truck, and river barge.	5	\$4,000,000	<input checked="" type="checkbox"/>	Priority Map
39	Terminal 4 Barge Facility Relocation	Design and construct a new barge receiving facility at the Terminal 4 grain facility. Slip 1, the location of the existing barge facility, will potentially be used as a confined disposal facility as part of the Terminal 4 Early Action Sediment Clean-up.	Approximately 40 to 50 percent of all wheat and barley exported from the Columbia\Willamette River system is delivered to the export terminal by barge. This includes wheat grown by Oregon grain growers.	5	\$8,000,000	<input checked="" type="checkbox"/>	Priority Map
40	Berth Deepening: Berths 401, 501, and 503	Deepen berths at Terminals 4 and 5 to allow deeper draft vessels to transit the planned 43 foot channel.	Allow better utilization of panamax-class bulk vessels.	5	\$1,600,000	<input checked="" type="checkbox"/>	Priority Map
41	TTD Relocation of Taxiway B Phase 1 & 2	Relocate Taxiway B 50 feet to the south.	Comply with new FAA requirements for distances between taxiways and runways. Reduce FAA restrictions on the size of aircraft using the runway.	5	\$2,200,000	<input checked="" type="checkbox"/>	Priority Map
42	Sundial Road Improvement	Improve the roadway section from Marine Drive to the north access of the Troutdale Reynolds Industrial Park.	Accommodate Troutdale Reynolds Industrial Park and other traffic.	5	\$772,600	<input checked="" type="checkbox"/>	Priority Map
43	223rd Avenue Widening	Widen to three lanes between Halsey St and Marine Drive.	Upgrade the facility to major collector urban street standards.	5	\$3,667,000	<input checked="" type="checkbox"/>	Priority Map

Map ID	Project Name	Project Description	Purpose	Time Frame	Total Cost	Priority	Area Map
44	257th Interchange at I-84 Improvement	Improve function of split diamond interchange at 257th.	Improve access from north and south of the interchange to I-84.	10	\$9,400,000	<input checked="" type="checkbox"/>	Priority Map
45	238th Avenue Extension	Construct new connector between Sandy Blvd. and Marine Drive.	To improve access from developing industrial areas to the interstate.	10	\$14,500,000	<input checked="" type="checkbox"/>	Priority Map
46	Freight Data Repository	Create a repository of regional freight data (primarily truck data), including from the region's Freight Data Collection project.	Collect truck counts from jurisdictions in the region using a tool that standardizes reported data and makes it available for use by others.	5		<input checked="" type="checkbox"/>	Priority Map
47	Terminal 2 Rail Improvement	Add approximately 600 feet to the inner track (Track 10) and connect it with the outer loop (Track 15). A third track may also be constructed and a rail scaling station added.	Increase rail capacity and operating efficiencies at Terminal 2.	5	\$1,535,000	<input checked="" type="checkbox"/>	Priority Map
48	PSU ITS Expansion	Expand PSU's existing web based ITS "count sensor" program beyond the freeway to some key arterials throughout the region.	To secure truck flow and congestion data.	5		<input checked="" type="checkbox"/>	Priority Map
49	HIO High Speed Exits	Construct high speed exits on the airport's longest runway.	Relieve a portion of the over capacity of the airport system until a third runway is constructed in 2010 and 2011.	5	\$2,430,000	<input checked="" type="checkbox"/>	Priority Map
50	HIO Taxiway A3 Extension	Extend Taxiway A3 near the airport's longest runway.	Allow aircraft to exit the runway faster and relieve a portion of the over capacity of the airport system until a third runway is constructed in 2010 and 2011.	5	\$2,200,000	<input checked="" type="checkbox"/>	Priority Map

Map ID	Project Name	Project Description	Purpose	Time Frame	Total Cost	Priority	Area Map
51	Mulino Airport Development Improvements	Construct private access improvements as part of a larger project of development improvements.	Construct fuel facilities, hangars, and provide vehicle access to support redevelopable parcels.	5	\$2,200,000	<input checked="" type="checkbox"/>	Priority Map
52	122nd Ave./Airport Way Intersection Improvement	Add turn lanes, channelization and signal modifications.	Mitigate PDX, Cascade Station, and Portland International Center Growth Impacts.	5	\$895,000	<input type="checkbox"/>	PDX/PIC
53	11th/13th (at Columbia Blvd.): Crossing Elimination	If feasible, eliminate the at-grade crossing and improve alternate roadway access.	Improve Kenton Mainline operation and eliminate a modal conflict.	5	\$1,000,000	<input type="checkbox"/>	PDX/PIC
54	Columbia Blvd. Widening (82nd Ave. - 60th Ave.)	Widen Columbia Blvd. to five lanes.	Address system bottleneck along Columbia Blvd.	20	\$15,000,000	<input type="checkbox"/>	PDX/PIC
55	Airport Way Terminal Entrance Roadway Relocation	Relocate and widen Airport Way northerly at Terminal entrance.	Maintain adequate access and circulation in the terminal area.	5	\$12,818,000	<input type="checkbox"/>	PDX/PIC
56	Sandy Boulevard/105th Avenue	Add a southbound left-turn lane.	Accommodate projected growth from the development of CS/PIC.	5	\$327,000	<input type="checkbox"/>	PDX/PIC
57	Airport Way/Holman Street	Add a northbound right-turn lane and extend the northbound left-turn lane	Accommodate projected traffic growth from the development of CS/PIC	5	\$440,000	<input type="checkbox"/>	PDX/PIC

Map ID	Project Name	Project Description	Purpose	Time Frame	Total Cost	Priority	Area Map
58	PDX Transportation Demand Management (TDM)	Implement strategies at PDX and PIC properties that reduce auto trips in the airport area. Programs to be undertaken with other area businesses/developers to maximize effectiveness; possible administration through a transportation management association (TMA). Costs will be ongoing operational costs, not capital costs.	Fulfill TDM requirements of PDX Master Plan. Implement TDM projects and programs recommended in the PDX Alternative Modes Study.	5		<input type="checkbox"/>	PDX/PIC
59	PIC Ped/Bike Network	Construct bike and pedestrian facilities as shown in the CS/PIC Plan District.	Improve bike/ped circulation in PIC.	10	\$1,163,835	<input type="checkbox"/>	PDX/PIC
60	Airport Way East Terminal Access Link Roadway	Construct Airport Way East Terminal access link roadway (Terminal Access Study, project R6, to be scoped by PDX Master Plan).	Facilitate direct East Terminal access, preventing failure of Main Terminal Roadway.	10	\$16,900,000	<input type="checkbox"/>	PDX/PIC
61	Airport Way Return and Exit Roadways	Realign the existing Terminal Exit Roadway to the north to facilitate the construction of Concourse B and Terminal Expansion East	Maintain adequate access and circulation in the terminal area.	10	\$5,660,000	<input type="checkbox"/>	PDX/PIC
62	Widen Airport Way West of 82nd	Widen Airport Way from terminal to 82nd Ave.	Provide improved traffic flow to the PDX Terminal and the surrounding PDX properties.	10	\$7,910,000	<input type="checkbox"/>	PDX/PIC
63	82nd Ave./Airport Way Grade Separation	Construct grade-separated overcrossing.	Provide efficient movement of traffic to PDX properties.	10	\$92,000,000	<input type="checkbox"/>	PDX/PIC
64	I-205 Auxiliary Lane NB	New auxiliary lane from I-84 to I-205 NB before Columbia Blvd.	Provide additional capacity for anticipated growth in area traffic.	20		<input type="checkbox"/>	PDX/PIC

Map ID	Project Name	Project Description	Purpose	Time Frame	Total Cost	Priority	Area Map
65	I-205 Auxiliary Lane SB	New I-205 auxiliary lane from Airport Way to Columbia Blvd.	Provide additional capacity for anticipated growth in I-205 corridor.	20		<input type="checkbox"/>	PDX/PIC
66	92nd Drive (Columbia Way to Alderwood Rd.)	Improve NE 92nd Drive from Columbia Slough to Alderwood Road.	Provide efficient movement of traffic between Columbia Way and Alderwood Road.	5	\$2,406,547	<input type="checkbox"/>	PDX/PIC
67	SW Quad Access	Provide street access from 33rd Ave. into SW Quad.	Provide efficient movement of traffic to developing PDX properties.	5	\$5,917,500	<input type="checkbox"/>	PDX/PIC
68	PDX Light Rail Station/Track Realignment	Realign light rail track into terminal building.	Accommodate terminal expansion plans.	10	\$14,000,000	<input type="checkbox"/>	PDX/PIC
69	Airport Way Braided Ramps	Construct braided ramps between the I-205 interchange and Cascade Interchange.	Maintain safety and capacity of Airport Way and interchanges.	20	\$59,000,000	<input type="checkbox"/>	PDX/PIC
70	Alternative Fuels Station	Construct a PDX alternative fuels station that will be accessible from both airside and landside	Provide refueling capabilities for both airside and landside (public) CNG vehicles. Encourage airport businesses to convert fleets to CNG to improve air quality.	5	\$1,000,000	<input type="checkbox"/>	PDX/PIC
71	North Portland Junction	Upgrade railroad with revised crossovers, centralized traffic control tie-in and increased turning radius.	Accommodate higher rail speeds at the junction which provides greater capacity.	10	\$9,160,000	<input type="checkbox"/>	Rivergate
72	I-5 Delta Park Widening	Widen I-5 to 6 lanes (Victory Blvd. to Lombard)	Improve efficiency and safety on I-5 between Victory Blvd. and Lombard.	5	\$68,963,000	<input type="checkbox"/>	Rivergate
73	I-5 Columbia River Crossing	Increase the number of lanes and add transit capacity across the river.	Increase multi-modal capacity across the Columbia River and relieve congestion.	10	\$1,200,000,000	<input type="checkbox"/>	Rivergate

Map ID	Project Name	Project Description	Purpose	Time Frame	Total Cost	Priority	Area Map
74	Kelly Point Park Access Trail/40 Mile Loop Trail	Bike/pedestrian trail along the north bank of the Columbia Slough.	Construct portion of 40 Mile Loop Trail in Rivergate.	5	\$101,500	<input type="checkbox"/>	Rivergate
75	Terminal 6 Internal Overcrossing	Construct a rail overcrossing at Terminal 6.	Increase efficient movement for rail and Terminal 6 tenants.	5	\$3,500,000	<input type="checkbox"/>	Rivergate
76	Marine Dr. Improvement Phase 2	Construct rail overcrossing on Marine Dr.	Avoid road/rail conflict.	20	\$18,000,000	<input type="checkbox"/>	Rivergate
77	West Hayden Island Bridge and Access Rd.	Construct 4-lane bridge to West Hayden Island, west alignment with 90' clearance and associated ramp infrastructure.	Provide access to Port's marine development and to existing development on Hayden Island.	10	\$49,800,000	<input type="checkbox"/>	Rivergate
78	West Hayden Island Rail Access	Rail access to support West Hayden Island development.	Advance rail-dependent development.	20		<input type="checkbox"/>	Rivergate
79	West Hayden Island Rail Yard	Seven track rail yard connected to facility trackage.	Advance rail development on West Hayden Island.	20		<input type="checkbox"/>	Rivergate
80	Lombard St./St. Louis Ave./Ivanhoe St. Multimodal Improvements	Improvements could include restriping, curb extensions and other pedestrian and bicycle amenities on Lombard St. that do not impede truck movement, as well as intersection improvements at St. Louis Ave. and at Philadelphia Ave., such as realignment and signalization.	Maintain truck movement and minimize conflicts with bicycles and pedestrians between Philadelphia Ave. and Lombard St. at Pier Park.	5	\$1,129,821	<input type="checkbox"/>	Rivergate
81	T6 Rail Support Yard Improvements	Construct an additional 6,800 feet of arrival/departure track and 8,500 feet of storage track.	Increase Terminal 6 rail capacity.	10	\$8,750,000	<input type="checkbox"/>	Rivergate
82	Burgard Bridge Replacement	Upgrade structure.	Replace the bridge with a slab on grade to eliminate weight restrictions.	5	\$1,445,000	<input type="checkbox"/>	Rivergate

Map ID	Project Name	Project Description	Purpose	Time Frame	Total Cost	Priority	Area Map
83	Columbia Blvd./Portland Rd. Intersection Improvements	Redesign could include realignment of travel lanes, channelization, signalization, signing or new sidewalks and curbs.	Reinforce through truck movements on minor and major truck streets (Portland Rd. and Columbia Blvd. respectively), minimizing neighborhood cut-through traffic.	5	\$600,000	<input type="checkbox"/>	Rivergate
84	Reynolds Site Road Access Phase 2 and 3	Placeholder for potential road improvements to serve Phase 2 and 3 industrial development. Actual project will be developed in coordination with stakeholders.	Address off-site transportation impacts.	10		<input type="checkbox"/>	Troutdale/TRIP
85	Sundial Rd./Troutdale Reynolds Industrial Park Accesses	Add northbound right turn lanes at Swigert Way and the northmost Troutdale Reynolds Industrial Park Access.	Accommodate Troutdale Reynolds Industrial Park traffic.	5	\$228,917	<input type="checkbox"/>	Troutdale/TRIP
86	Marine Drive/Sundial Road	Signalize the intersection.	Support Access to Troutdale Reynolds Industrial Park	5	\$260,250	<input type="checkbox"/>	Troutdale/TRIP
87	Marine Drive Improvement and Extension	Convert Marine Drive one-way southbound to two-way under I-84 and widen to five lanes.	Ensure adequate long term interchange operation.	10	\$20,400,000	<input type="checkbox"/>	Troutdale/TRIP
88	Riverside Drive Extension	Riverside Dr. Extension (190th to Sandy Blvd.); improve to collector standards.	Serve developing industrial parcels.	5	\$4,500,000	<input type="checkbox"/>	Troutdale/TRIP
89	Sandy Blvd. Widening to 4 lanes	Sandy Blvd. widen to 4 lanes and center turn lane (165th-202nd) with sidewalks and bike lanes.	Improve east west capacity and serve developing industrial property.	10	\$26,040,578	<input type="checkbox"/>	Troutdale/TRIP
90	Sandy Blvd. Widening to 3 lanes	Sandy Blvd. widen to 3 lanes (207th to 238th), add sidewalks and bike lanes.	Improve east west capacity and serve adjacent developing industrial property.	10	\$7,438,000	<input type="checkbox"/>	Troutdale/TRIP

Map ID	Project Name	Project Description	Purpose	Time Frame	Total Cost	Priority	Area Map
91	Reynolds Site Road Access (Swigert Way)	Construct new roadway.	Provide Troutdale Reynolds Industrial Park traffic circulation.	5	\$4,696,000	<input type="checkbox"/>	Troutdale/TRIP
92	North Willamette Greenway Trail	Pedestrian and bicycle trail from the St. Johns Bridge to the Steel Bridge along the Willamette River.	Improve pedestrian and bicycle connectivity in North Portland.	20	\$200,000	<input type="checkbox"/>	T2/Swan Island
93	Going St. Rail-Overcrossing Improvement	Widen intersection and add additional eastbound lane on structure.	Provide through movement capacity for traffic entering and exiting Swan Island.	5	\$3,000,000	<input type="checkbox"/>	T2/Swan Island
94	Graham Line Connection	This project will create a new track connection between the Graham Line, which runs parallel with I-84 through Sullivans Gulch and the Brooklyn Sub, UP's north-south line through Portland.	This connection will allow UP rail traffic entering Portland from the east to turn south onto the Brooklyn Sub from the Graham Line. Currently UP rail traffic entering Portland from the east and intending to head south on the Brooklyn Sub must take the Kenton Line to Peninsula Junction then travel through the Peninsula Tunnel to connect with the Brooklyn Sub north of Albina Yard. This project will eliminate delay and increase system capacity.	5	\$15,000,000	<input type="checkbox"/>	T2/Swan Island

Priority Projects

2008 Port Transportation Improvement Plan

KEY TO FEATURES

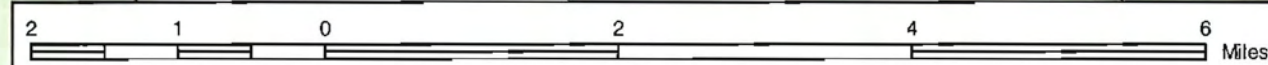
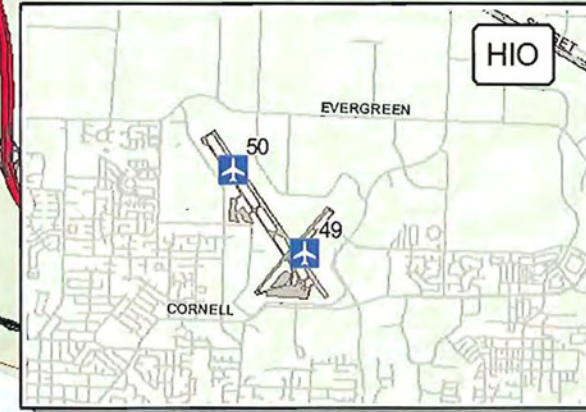
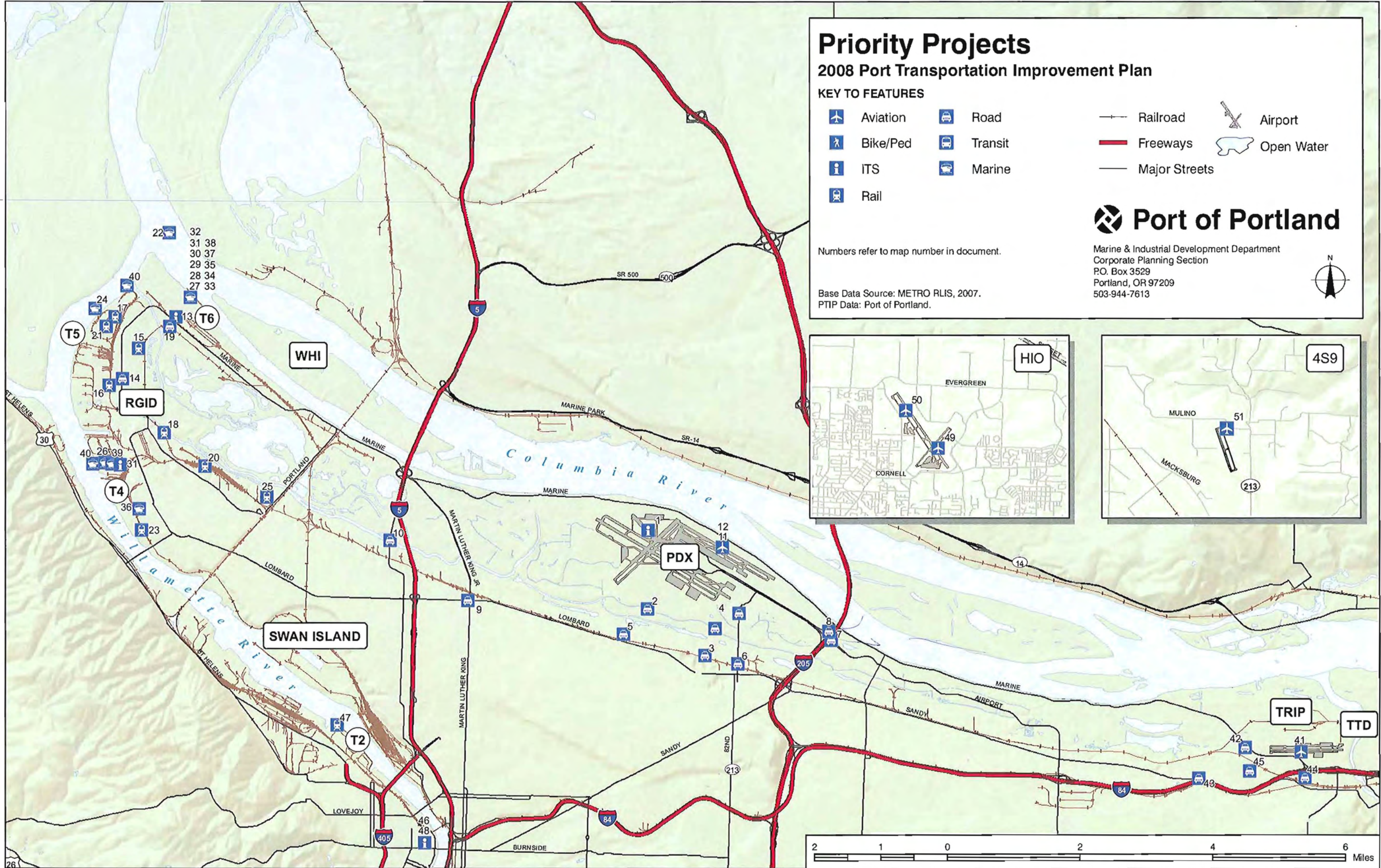
- | | | | |
|----------|---------|---------------|------------|
| Aviation | Road | Railroad | Airport |
| Bike/Ped | Transit | Freeways | Open Water |
| ITS | Marine | Major Streets | |
| Rail | | | |

Numbers refer to map number in document.

Base Data Source: METRO RLIS, 2007.
PTIP Data: Port of Portland.



Marine & Industrial Development Department
Corporate Planning Section
P.O. Box 3529
Portland, OR 97209
503-944-7613



PRIORITY PROJECTS

Project Name: PDX ITS

Map ID: 1	Time Frame: 10 years	Total Cost: \$1,000,000.00
Project Type: ITS		Year of Cost Estimate: 2007
Operation Area: Priority Map		Federal:
Project Description: Intelligent Transportation Systems in the PDX area.		State:
		City:
		SDC:
Purpose: Improve traveler information and automated vehicle identification system at PDX.		Port Share Committed:
		Port Share Forecasted: \$1,000,000.00
JDE NUM: 100680		Private:
RTP Related: 4029		Other:
Recent Study: PDX ITS Plan (2001)		Unfunded: \$0.00
<input type="checkbox"/> Conditioned Project	<input checked="" type="checkbox"/> RTP 2025 Constrained	Estimate Rating: 3c
<input type="checkbox"/> Identified in STIP	<input checked="" type="checkbox"/> RTP 2025 Illustrative	

Project Name: Cornfoot Rd./Airtrans Way Signal Improvement

Map ID: 2	Time Frame: 5 years	Total Cost: \$650,000.00
Project Type: Road		Year of Cost Estimate: 2006
Operation Area: Priority Map		Federal:
Project Description: Construct new traffic signal.		State: \$504,000.00
		City:
		SDC:
Purpose: Retain efficient movement of traffic to PDX properties.		Port Share Committed: \$146,000.00
		Port Share Forecasted:
JDE NUM: 810015, 810037		Private:
RTP Related: 4055		Other:
Recent Study: PDX Conditional Use Master Plan (2003)		Unfunded:
<input type="checkbox"/> Conditioned Project	<input checked="" type="checkbox"/> RTP 2025 Constrained	Estimate Rating: 3c
<input checked="" type="checkbox"/> Identified in STIP	<input checked="" type="checkbox"/> RTP 2025 Illustrative	

PRIORITY PROJECTS

Project Name: Alderwood/Columbia Blvd. Intersection Improvements

Map ID: 3	Time Frame: 5 years	Total Cost: \$1,460,000.00
Project Type: Road		Year of Cost Estimate: 2002
Operation Area: Priority Map		Federal:
Project Description: Widen and signalize intersection at Alderwood Rd. and Columbia Blvd.		State:
		City:
Purpose: Provide transportation link to the cargo area located within the south airport area and to support Columbia Corridor freight movement.		SDC:
		Port Share Committed:
JDE NUM: 810020		Port Share Forecasted:
RTP Related: 4041		Private:
Recent Study: Cascade Station/Portland Int'l Center Environmental Assessment Transportation Analysis (2004)		Other:
<input type="checkbox"/> Conditioned Project	<input checked="" type="checkbox"/> RTP 2025 Constrained	Unfunded: \$1,460,000.00
<input type="checkbox"/> Identified in STIP	<input checked="" type="checkbox"/> RTP 2025 Illustrative	Estimate Rating: 3c

Project Name: Alderwood Rd. Intersections Improvement

Map ID: 4	Time Frame: 5 years	Total Cost: \$1,528,000.00
Project Type: Road		Year of Cost Estimate: 2006
Operation Area: Priority Map		Federal:
Project Description: Improve Alderwood Rd./Cornfoot Rd. and Alderwood Rd./82nd Ave. intersections. Add signals, turn lanes.		State: \$1,218,000.00
		City:
Purpose: Provide efficient movement of traffic to PDX and PIC properties.		SDC:
		Port Share Committed:
JDE NUM: 810014, 810016		Port Share Forecasted: \$310,000.00
RTP Related: 4042		Private:
Recent Study: PDX Conditional Use Master Plan (2003)		Other:
<input checked="" type="checkbox"/> Conditioned Project	<input checked="" type="checkbox"/> RTP 2025 Constrained	Unfunded:
<input checked="" type="checkbox"/> Identified in STIP	<input checked="" type="checkbox"/> RTP 2025 Illustrative	Estimate Rating: 2b

PRIORITY PROJECTS

Project Name: 47th Ave. (at Columbia Blvd.) Intersection Improvements

Map ID: 5	Time Frame: 5 years	Total Cost: \$4,100,000.00
Project Type: Road		Year of Cost Estimate: 2006
Operation Area: Priority Map		Federal:
Project Description: Widen and channelize NE 47th Ave. intersection at NE Columbia Blvd.		State: \$3,330,000.00
		City:
Purpose: Provide improved traffic flow to air cargo facilities located within the south airport area.		SDC:
		Port Share Committed:
JDE NUM: 810013		Port Share Forecasted: \$770,000.00
RTP Related: 4040		Private:
Recent Study: PDX Conditional Use Master Plan (2003)		Other:
<input checked="" type="checkbox"/> Conditioned Project	<input checked="" type="checkbox"/> RTP 2025 Constrained	Unfunded:
<input checked="" type="checkbox"/> Identified In STIP	<input checked="" type="checkbox"/> RTP 2025 Illustrative	Estimate Rating: 3c

Project Name: 82nd Ave. SB Ramp/Columbia Blvd.

Map ID: 6	Time Frame: 10 years	Total Cost: \$3,409,000.00
Project Type: Road		Year of Cost Estimate: 2006
Operation Area: Priority Map		Federal: \$2,000,000.00
Project Description: Construct additional through lane in each direction. Add a new turn lane. Signalize.		State:
		City:
Purpose: Mitigate PDX Growth Impacts.		SDC:
		Port Share Committed: \$1,409,000.00
JDE NUM: 810011		Port Share Forecasted:
RTP Related: 4044		Private:
Recent Study: Cascade Station/Portland Intl Center Environmental Assessment Transportation Analysis (2004)		Other:
<input checked="" type="checkbox"/> Conditioned Project	<input checked="" type="checkbox"/> RTP 2025 Constrained	Unfunded:
<input checked="" type="checkbox"/> Identified in STIP	<input checked="" type="checkbox"/> RTP 2025 Illustrative	Estimate Rating: 3c

PRIORITY PROJECTS

Project Name: I-205 Interchange - NB On-Ramp at Airport Way

Map ID: 7	Time Frame: 10 years	Total Cost: \$27,200,000.00
Project Type: Road		Year of Cost Estimate: 2006
Operation Area: Priority Map		Federal: \$1,000,000.00
Project Description: New I-205 NB on-ramp and/or other improvements at I-205/Airport Way interchange.		State:
		City:
Purpose: Provide additional capacity for anticipated growth in area traffic.		SDC:
		Port Share Committed: \$7,000,000.00
JDE NUM: 810009		Port Share Forecasted:
RTP Related: 2069		Private:
Recent Study: Cascade Station/Portland Int'l Center Environmental Assessment Transportation Analysis (2004)		Other:
<input type="checkbox"/> Conditioned Project	<input checked="" type="checkbox"/> RTP 2025 Constrained	Unfunded: \$19,200,000.00
<input checked="" type="checkbox"/> Identified in STIP	<input checked="" type="checkbox"/> RTP 2025 Illustrative	Estimate Rating: 3c

Project Name: I-205 Interchange - SB Off-Ramp at Airport Way

Map ID: 8	Time Frame: 5 years	Total Cost: \$2,740,000.00
Project Type: Road		Year of Cost Estimate: 2006
Operation Area: Priority Map		Federal:
Project Description: Widen I-205 SB off-ramp at Airport Way.		State:
		City:
Purpose: Provide additional capacity for anticipated growth at interchange.		SDC:
		Port Share Committed: \$2,740,000.00
JDE NUM: 810012		Port Share Forecasted:
RTP Related: 2070		Private:
Recent Study: Cascade Station/Portland Int'l Center Environmental Assessment Transportation Analysis (2004)		Other:
<input checked="" type="checkbox"/> Conditioned Project	<input checked="" type="checkbox"/> RTP 2025 Constrained	Unfunded:
<input type="checkbox"/> Identified in STIP	<input checked="" type="checkbox"/> RTP 2025 Illustrative	Estimate Rating: 2a

PRIORITY PROJECTS

Project Name: Columbia Blvd./Lombard St. Improvements at MLK

Map ID: 9	Time Frame: 5 years	Total Cost: \$16,835,000.00
Project Type: Road		Year of Cost Estimate: 2004
Operation Area: Priority Map		Federal: \$2,000,000.00
Project Description: Improve freight movement between Columbia Blvd. and Lombard St.		State:
		City: \$114,455.00
		SDC:
Purpose: Improve connectivity and better distribute freight traffic between Columbia Blvd. and Lombard St. Improve rail network performance on the Kenton mainline in the vicinity of 11th Avenue.		Port Share Committed: \$114,455.00
JDE NUM:		Port Share Forecasted:
RTP Related: 4037		Private:
Recent Study: Columbia Corridor Transportation Study (1999)		Other:
<input type="checkbox"/> Conditioned Project	<input checked="" type="checkbox"/> RTP 2025 Constrained	Unfunded: \$14,606,090.00
<input type="checkbox"/> Identified in STIP	<input checked="" type="checkbox"/> RTP 2025 Illustrative	Estimate Rating:

Project Name: I-5/Columbia Blvd. Improvement

Map ID: 10	Time Frame: 10 years	Total Cost: \$69,000,000.00
Project Type: Road		Year of Cost Estimate: 2006
Operation Area: Priority Map		Federal:
Project Description: Construct a full interchange at Columbia Blvd. or the functional equivalent.		State:
		City:
		SDC:
Purpose: Improve connections between Columbia Blvd. and I-5 for trucks.		Port Share Committed:
JDE NUM: 810009		Port Share Forecasted:
RTP Related: 4006		Private:
Recent Study: I-5 Delta Park Environmental Assessment (2006)		Other:
<input type="checkbox"/> Conditioned Project	<input checked="" type="checkbox"/> RTP 2025 Constrained	Unfunded: \$69,000,000.00
<input type="checkbox"/> Identified in STIP	<input checked="" type="checkbox"/> RTP 2025 Illustrative	Estimate Rating: N/A

PRIORITY PROJECTS

Project Name: PDX North Runway Rehabilitation

Map ID: 11

Time Frame: 5 years

Total Cost: \$11,200,000.00

Project Type: Aviation

Year of Cost

Operation Area Priority Map

Estimate:

Project Description: Rehabilitate the North Runway.

Federal:

State:

City:

SDC:

Purpose: Keep the runway in safe operating condition.

Port Share

Committed:

JDE NUM: 100334

Port Share

Forecasted:

RTP Related:

Private:

Recent Study:

Other:

Conditioned Project

RTP 2025 Constrained

Unfunded: \$11,200,000.00

Identified in STIP

RTP 2025 Illustrative

Estimate Rating:

Project Name: PDX North Runway Extension

Map ID: 12

Time Frame: 5 years

Total Cost: \$61,000,000.00

Project Type: Aviation

Year of Cost

Operation Area Priority Map

Estimate: 2007

Project Description: Extend the length of the North Runway by up to 1,828 feet.

Federal: \$41,000,000.00

State:

City:

SDC:

Purpose: Preserve international and domestic long haul service while south runway is closed.

Port Share

Committed:

JDE NUM: 100334

Port Share

Forecasted:

RTP Related:

Private:

Recent Study: PDX Conditional Use Master Plan (2003)

Other:

Conditioned Project

RTP 2025 Constrained

Unfunded: \$20,000,000.00

Identified in STIP

RTP 2025 Illustrative

Estimate Rating: 2b

PRIORITY PROJECTS

Project Name: Rivergate ITS

Map ID: 13	Time Frame: 5 years	Total Cost: \$480,000.00
Project Type: ITS		Year of Cost Estimate: 2007
Operation Area: Priority Map		Federal:
Project Description: Intelligent Transportation System in Rivergate.		State:
		City:
		SDC:
Purpose: Improve traffic efficiency in Rivergate by connecting information about the roadway system to ODOT's Highway ITC systems.		Port Share Committed:
		Port Share Forecasted:
JDE NUM:		Private:
RTP Related:		Other:
Recent Study:		Unfunded: \$480,000.00
<input type="checkbox"/> Conditioned Project	<input type="checkbox"/> RTP 2025 Constrained	Estimate Rating: 3c
<input type="checkbox"/> Identified in STIP	<input type="checkbox"/> RTP 2025 Illustrative	

Project Name: Widen Lombard-Purdy to Simmons

Map ID: 14	Time Frame: 5 years	Total Cost: \$3,610,000.00
Project Type: Road		Year of Cost Estimate: 2006
Operation Area: Priority Map		Federal:
Project Description: Widen North Lombard St. from 600 feet south of North Rivergate Blvd. to the Columbia Slough. Add bike lanes and sidewalks.		State: \$3,610,000.00
		City:
		SDC:
Purpose: Increase multi-modal capacity to accommodate growth in surrounding development.		Port Share Committed:
		Port Share Forecasted:
JDE NUM: 100386		Private:
RTP Related: 4063		Other:
Recent Study:		Unfunded:
<input type="checkbox"/> Conditioned Project	<input checked="" type="checkbox"/> RTP 2025 Constrained	Estimate Rating: 2b
<input checked="" type="checkbox"/> Identified in STIP	<input checked="" type="checkbox"/> RTP 2025 Illustrative	

PRIORITY PROJECTS

Project Name: Ramsey Rail Improvements

Map ID: 15	Time Frame: 5 years	Total Cost: \$13,900,000.00
Project Type: Rail		Year of Cost Estimate: 2006
Operation Area: Priority Map		Federal: \$4,600,000.00
Project Description: Construct up to six tracks and a second lead into/through the Ramsey Rail Yard. Project adds rail storage and staging separate from main line tracks.		State: \$6,800,000.00
		City:
		SDC:
Purpose: Support trade related transportation infrastructure, policy, and services by constructing a key rail project to increase Rivergate and regional capacity, and to allow dual unit train access to Terminal 5.		Port Share Committed:
JDE NUM: 100606		Port Share Forecasted:
RTP Related: 4082		Private: \$2,500,000.00
Recent Study: I-5 Rail Capacity Study (HDR, 2003)		Other:
<input type="checkbox"/> Conditioned Project	<input checked="" type="checkbox"/> RTP 2025 Constrained	Unfunded:
<input checked="" type="checkbox"/> Identified in STIP	<input checked="" type="checkbox"/> RTP 2025 Illustrative	Estimate Rating: 2b

Project Name: SRG Rail Yard Expansion

Map ID: 16	Time Frame: 5 years	Total Cost: \$9,821,000.00
Project Type: Rail		Year of Cost Estimate: 2007
Operation Area: Priority Map		Federal:
Project Description: Construct a second lead and five storage tracks in South Rivergate Yard		State:
		City:
		SDC:
Purpose: Increase unit train capacity to Terminal 5 and other South Rivergate facilities.		Port Share Committed:
JDE NUM: 100352		Port Share Forecasted: \$878,800.00
RTP Related: 4068		Private:
Recent Study: Marine Terminal Master Plan 2020 (2003)		Other:
<input type="checkbox"/> Conditioned Project	<input type="checkbox"/> RTP 2025 Constrained	Unfunded: \$8,942,200.00
<input type="checkbox"/> Identified in STIP	<input checked="" type="checkbox"/> RTP 2025 Illustrative	Estimate Rating: 2a

PRIORITY PROJECTS

Project Name: Portland Bulk Terminal 4th Rail Loop

Map ID: 17	Time Frame: 5 years	Total Cost: \$7,000,000.00
Project Type: Rail		Year of Cost Estimate:
Operation Area: Priority Map		Federal:
Project Description: Design and construct a fourth rail loop within Portland Bulk Terminal's potash export facility at Terminal 5.		State:
		City:
		SDC:
Purpose: The project will increase the throughput capacity by facilitating the receipt and dispatch of unit trains.		Port Share Committed:
JDE NUM: 100956		Port Share Forecasted:
RTP Related:		Private:
Recent Study:		Other:
<input type="checkbox"/> Conditioned Project	<input type="checkbox"/> RTP 2025 Constrained	Unfunded: \$7,000,000.00
<input type="checkbox"/> Identified in STIP	<input type="checkbox"/> RTP 2025 Illustrative	Estimate Rating:

Project Name: Barnes Yard to Bonneville Yard Trackage

Map ID: 18	Time Frame: 5 years	Total Cost: \$11,912,000.00
Project Type: Rail		Year of Cost Estimate: 2003
Operation Area: Priority Map		Federal:
Project Description: Construct additional unit train trackage (approximately 16,000 linear feet) between Bonneville and Barnes rail yards.		State:
		City:
		SDC:
Purpose: Address limited Rivergate staging area for unit trains approaching or departing the marine terminals. Reduce switching bottlenecks, limits to terminal access and other operational conflicts in the Columbia Corridor.		Port Share Committed:
JDE NUM:		Port Share Forecasted:
RTP Related: 4071		Private:
Recent Study: I-5 Rail Capacity Study (HDR, 2003)		Other:
<input type="checkbox"/> Conditioned Project	<input type="checkbox"/> RTP 2025 Constrained	Unfunded: \$11,912,000.00
<input type="checkbox"/> Identified in STIP	<input checked="" type="checkbox"/> RTP 2025 Illustrative	Estimate Rating: N/A

PRIORITY PROJECTS

Project Name: Leadbetter St. Extension/Overcrossing

Map ID: 19	Time Frame: 5 years	Total Cost: \$11,323,500.00
Project Type: Road		Year of Cost Estimate: 2007
Operation Area: Priority Map		Federal: \$6,466,193.00
Project Description: Complete Leadbetter St. loop to Marine Dr. (Pacific Gateway/Terminal 6 intersection) including a road bridge over rail line.		State: \$4,857,307.00
		City:
		SDC:
Purpose: Provide access to developing properties and eliminate rail/auto conflict at future intersection.		Port Share Committed:
		Port Share Forecasted:
JDE NUM: 500157		Private:
RTP Related: 4087		Other:
Recent Study: _		Unfunded:
<input checked="" type="checkbox"/> Conditioned Project	<input checked="" type="checkbox"/> RTP 2025 Constrained	Estimate Rating: 2b
<input type="checkbox"/> Identified in STIP	<input checked="" type="checkbox"/> RTP 2025 Illustrative	

Project Name: Barnes to Terminal 4 Rail

Map ID: 20	Time Frame: 5 years	Total Cost: \$3,000,000.00
Project Type: Rail		Year of Cost Estimate: 2005
Operation Area: Priority Map		Federal:
Project Description: Provide a new track from Barnes Yard to Terminal 4		State:
		City:
		SDC:
Purpose: Improve rail access to Terminal 4.		Port Share Committed:
		Port Share Forecasted: \$3,000,000.00
JDE NUM: 100658		Private:
RTP Related:		Other:
Recent Study: Marine Terminal Master Plan 2020 (2003)		Unfunded:
<input type="checkbox"/> Conditioned Project	<input type="checkbox"/> RTP 2025 Constrained	Estimate Rating: 2b
<input type="checkbox"/> Identified in STIP	<input type="checkbox"/> RTP 2025 Illustrative	

PRIORITY PROJECTS

Project Name: T-5 Unit Rail Loop #3

Map ID: 21	Time Frame: 5 years	Total Cost: \$3,534,000.00
Project Type: Rail		Year of Cost Estimate: 2006
Operation Area: Priority Map		Federal:
Project Description: Construct one additional loop track.		State:
		City:
		SDC:
Purpose: Increase rail storage and rail handling capability of existing bulk terminal.		Port Share Committed: \$3,534,000.00
JDE NUM: 100466		Port Share Forecasted:
RTP Related:		Private:
Recent Study: Marine Terminal Master Plan 2020 (2003)		Other:
<input type="checkbox"/> Conditioned Project	<input type="checkbox"/> RTP 2025 Constrained	Unfunded:
<input type="checkbox"/> Identified in STIP	<input type="checkbox"/> RTP 2025 Illustrative	Estimate Rating: 2c

Project Name: Channel Deepening

Map ID: 22	Time Frame: 5 years	Total Cost: \$150,573,000.00
Project Type: Marine		Year of Cost Estimate:
Operation Area: Priority Map		Federal:
Project Description: Deepen the Columbia River channel to 43 feet between the mouth of Columbia River and Portland/Vancouver Harbor.		State:
		City:
		SDC:
Purpose: Serve panamax bulk vessels and post-Panamax container vessels.		Port Share Committed:
JDE NUM: 700000, 700001		Port Share Forecasted:
RTP Related: 4067		Private:
Recent Study:		Other: \$150,573,000.00
<input type="checkbox"/> Conditioned Project	<input type="checkbox"/> RTP 2025 Constrained	Unfunded:
<input type="checkbox"/> Identified in STIP	<input type="checkbox"/> RTP 2025 Illustrative	Estimate Rating: 1b

PRIORITY PROJECTS

Project Name: Cathedral Park Quiet Zone

Map ID: 23

Time Frame: 5 years

Total Cost: \$3,500,000.00

Project Type: Rail

Year of Cost

Estimate: 2007

Operation Area: Priority Map

Federal:

Project Description: Address rail switching noise by improving multiple public rail crossings in the St. Johns Cathedral Park area.

State:

City:

SDC:

Purpose: To allow auto import operations to continue to grow in N. Portland and improve neighborhood livability.

Port Share

Committed:

JDE NUM: 100831

Port Share

Forecasted:

RTP Related:

Private:

Recent Study:

Other:

Conditioned Project RTP 2025 Constrained

Unfunded: \$3,500,000.00

Identified in STIP RTP 2025 Illustrative

Estimate Rating:

Project Name: Berth 503 Dock Rehabilitation

Map ID: 24

Time Frame: 5 years

Total Cost: \$4,700,000.00

Project Type: Marine

Year of Cost

Estimate:

Operation Area: Priority Map

Federal:

Project Description: Repair the priority components of Berth 503 to address advanced corrosion on the girders and beams which support the dock structure.

State:

City:

SDC:

Purpose: Make significant and necessary life-extending repairs to Berth 503 to keep the structure serviceable for the next 30 years.

Port Share

Committed:

JDE NUM: 100829

Port Share

Forecasted:

RTP Related:

Private:

Recent Study:

Other:

Conditioned Project RTP 2025 Constrained

Unfunded: \$4,700,000.00

Identified in STIP RTP 2025 Illustrative

Estimate Rating:

PRIORITY PROJECTS

Project Name: Kenton Rail Line Upgrade

Map ID: 25 **Time Frame:** 10 years

Project Type: Rail

Operation Area: Priority Map

Project Description: Upgrade existing track to second main track with new double track from Peninsula Junction to I-205 and increase track speeds between North Portland, Peninsula Junction, to Reynolds on UP's Kenton Line. Part of Triangle project with ODOT.

Purpose: Expand rail capacity and reduce delays for greater efficiency.

JDE NUM:

RTP Related: 4070

Recent Study: I-5 Rail Capacity Study (HDR, 2003)

- Conditioned Project
- RTP 2025 Constrained
- Identified in STIP
- RTP 2025 Illustrative

Total Cost: \$25,382,000.00

Year of Cost Estimate: 2003

Federal:

State:

City:

SDC:

Port Share Committed:

Port Share Forecasted:

Private:

Other:

Unfunded: \$25,382,000.00

Estimate Rating:

Project Name: Terminal 4 Pipeline Infrastructure

Map ID: 26 **Time Frame:** 5 years

Project Type: Marine

Operation Area: Priority Map

Project Description: Design and build a new common user pipeline system.

Purpose: Develop a new pipeline system to to serve as many as four potential liquid bulk tenants over Berth 401.

JDE NUM:

RTP Related:

Recent Study:

- Conditioned Project
- RTP 2025 Constrained
- Identified in STIP
- RTP 2025 Illustrative

Total Cost: \$5,600,000.00

Year of Cost Estimate: 2007

Federal:

State:

City:

SDC:

Port Share Committed:

Port Share Forecasted:

Private:

Other:

Unfunded: \$5,600,000.00

Estimate Rating: 3b

PRIORITY PROJECTS

Project Name: Terminal 6 Container Crane #6381 Purchase

Map ID: 27 **Time Frame:** 5 years

Project Type: Marine

Operation Area: Priority Map

Project Description: Purchase a post-panamax crane to bring the number of post-panamax cranes at Terminal 6 to four. Scheduled for delivery in 2008

Purpose: Facilitate efficient handling of larger container ships.

Total Cost: \$10,900,000.00

Year of Cost Estimate:

Federal:

State:

City:

SDC:

Port Share Committed:

Port Share Forecasted:

Private:

Other:

Unfunded: \$10,900,000.00

Estimate Rating:

JDE NUM: 100364, 100841

RTP Related:

Recent Study:

- Conditioned Project
- RTP 2025 Constrained
- Identified in STIP
- RTP 2025 Illustrative

Project Name: Terminal 6 Optical Character Recognition

Map ID: 28 **Time Frame:** 5 years

Project Type: ITS

Operation Area: Priority Map

Project Description: Install Optical Character Recognition software and hardware.

Purpose: Automate data capture at the truck gates.

Total Cost: \$2,700,000.00

Year of Cost Estimate:

Federal:

State:

City:

SDC:

Port Share Committed:

Port Share Forecasted:

Private:

Other:

Unfunded: \$2,700,000.00

Estimate Rating:

JDE NUM: 100840, 100532

RTP Related:

Recent Study:

- Conditioned Project
- RTP 2025 Constrained
- Identified in STIP
- RTP 2025 Illustrative

PRIORITY PROJECTS

Project Name: Terminal 6 Wireless Network and Mobile Data Units

Map ID: 29	Time Frame: 5 years	Total Cost: \$300,000.00
Project Type: ITS		Year of Cost Estimate:
Operation Area: Priority Map		Federal:
Project Description: Install a wireless network covering the Terminal 6 facility and provide new mobile data units (MDUs) to send data over that network.		State:
		City:
Purpose: Improve operational efficiencies at Terminal 6.		SDC:
		Port Share Committed:
JDE NUM: 500156		Port Share Forecasted:
RTP Related:		Private:
Recent Study:		Other:
<input type="checkbox"/> Conditioned Project	<input type="checkbox"/> RTP 2025 Constrained	Unfunded: \$300,000.00
<input type="checkbox"/> Identified in STIP	<input type="checkbox"/> RTP 2025 Illustrative	Estimate Rating:

Project Name: T-6 Berth Deepening and Scour Protection

Map ID: 30	Time Frame: 5 years	Total Cost: \$3,400,000.00
Project Type: Marine		Year of Cost Estimate:
Operation Area: Priority Map		Federal:
Project Description: Construct scour protection and deepen Terminal 6 container berths.		State:
		City:
Purpose: Permit better utilization for vessels calling Terminal 6.		SDC:
		Port Share Committed:
JDE NUM: 100194		Port Share Forecasted:
RTP Related:		Private:
Recent Study:		Other:
<input type="checkbox"/> Conditioned Project	<input type="checkbox"/> RTP 2025 Constrained	Unfunded: \$3,400,000.00
<input type="checkbox"/> Identified in STIP	<input type="checkbox"/> RTP 2025 Illustrative	Estimate Rating:

PRIORITY PROJECTS

Project Name: Marine Access Control and Surveillance

Map ID: 31	Time Frame: 5 years	Total Cost: \$3,400,000.00
Project Type: ITS		Year of Cost Estimate:
Operation Area: Priority Map		Federal:
Project Description: Install new security gate systems at at Terminals 4 and 6.		State:
		City:
		SDC:
Purpose: Strengthen access gate and perimeter security at Terminals 4 and 6.		Port Share Committed:
		Port Share Forecasted:
JDE NUM: 100344		Private:
RTP Related:		Other:
Recent Study:		Unfunded: \$3,400,000.00
<input type="checkbox"/> Conditioned Project	<input type="checkbox"/> RTP 2025 Constrained	Estimate Rating:
<input type="checkbox"/> Identified in STIP	<input type="checkbox"/> RTP 2025 Illustrative	

Project Name: T-6 Crane Rail Improvements and Tie Backs

Map ID: 32	Time Frame: 5 years	Total Cost: \$4,600,000.00
Project Type: Marine		Year of Cost Estimate:
Operation Area: Priority Map		Federal:
Project Description: Construct additional crane rail tie-backs to Berth 604 east and Berth 605, and add 100 feet of crane rail to Berth 604 west.		State:
		City:
		SDC:
Purpose: Improve the strength of the dock and provide crane rail necessary to handle two post-panamax vessels at the same time.		Port Share Committed:
		Port Share Forecasted:
JDE NUM: 100241		Private:
RTP Related:		Other:
Recent Study:		Unfunded: \$4,600,000.00
<input type="checkbox"/> Conditioned Project	<input type="checkbox"/> RTP 2025 Constrained	Estimate Rating:
<input type="checkbox"/> Identified in STIP	<input type="checkbox"/> RTP 2025 Illustrative	

PRIORITY PROJECTS

Project Name: Terminal 6 Container Dock Extension

Map ID: 33	Time Frame: 5 years	Total Cost: \$19,500,000.00
Project Type: Marine		Year of Cost Estimate:
Operation Area: Priority Map		Federal:
Project Description: Extend Berth 605 upstream by 600 feet or more.		State:
		City:
		SDC:
Purpose: Lengthen the berth to preserve Terminal 6 as a three-berth facility capable of handling longer vessels.		Port Share Committed:
		Port Share Forecasted:
JDE NUM: 100359		Private:
RTP Related:		Other:
Recent Study:		Unfunded: \$19,500,000.00
<input type="checkbox"/> Conditioned Project	<input type="checkbox"/> RTP 2025 Constrained	Estimate Rating:
<input type="checkbox"/> Identified in STIP	<input type="checkbox"/> RTP 2025 Illustrative	

Project Name: Terminal 6 Additional Post-Panamax Cranes

Map ID: 34	Time Frame: 5 years	Total Cost: \$20,000,000.00
Project Type: Marine		Year of Cost Estimate:
Operation Area: Priority Map		Federal:
Project Description: Acquire two post-panamax cranes in addition to Crane #6381.		State:
		City:
		SDC:
Purpose: Provide a two-berth post-panamax vessel capability at Terminal 6.		Port Share Committed:
		Port Share Forecasted:
JDE NUM: 100365		Private:
RTP Related:		Other:
Recent Study:		Unfunded: \$20,000,000.00
<input type="checkbox"/> Conditioned Project	<input type="checkbox"/> RTP 2025 Constrained	Estimate Rating:
<input type="checkbox"/> Identified in STIP	<input type="checkbox"/> RTP 2025 Illustrative	

PRIORITY PROJECTS

Project Name: Terminal 6 Auto Facility Upgrades

Map ID: 35 **Time Frame:** 5 years

Project Type: Marine

Operation Area: Priority Map

Project Description: Modify Berth 607 dock, expand the rail ramp, study rail crossing feasibility at Terminal 6.

Purpose: Increase operating efficiencies at the Honda facility.

JDE NUM: 100304, 100323

RTP Related:

Recent Study:

- Conditioned Project RTP 2025 Constrained
- Identified in STIP RTP 2025 Illustrative

Total Cost: \$10,200,000.00

Year of Cost Estimate:

Federal:

State:

City:

SDC:

Port Share Committed:

Port Share Forecasted:

Private:

Other:

Unfunded: \$10,200,000.00

Estimate Rating:

Project Name: Terminal 4 Automobile Yard Expansion

Map ID: 36 **Time Frame:** 5 years

Project Type: Marine

Operation Area: Priority Map

Project Description: Design and construct six acres of porous pavement parking for the storage of imported automobiles.

Purpose: The project will provide additional land to meet auto storage capacity needs of Toyota, supporting the Port's automobile import business line.

JDE NUM: 100769

RTP Related:

Recent Study:

- Conditioned Project RTP 2025 Constrained
- Identified in STIP RTP 2025 Illustrative

Total Cost: \$2,500,000.00

Year of Cost Estimate:

Federal:

State:

City:

SDC:

Port Share Committed:

Port Share Forecasted:

Private:

Other:

Unfunded: \$2,500,000.00

Estimate Rating:

PRIORITY PROJECTS

Project Name: Terminal 6 Yard Equipment

Map ID: 37	Time Frame: 5 years	Total Cost: \$1,750,000.00
Project Type: Marine		Year of Cost Estimate:
Operation Area: Priority Map		Federal:
Project Description: Purchase eight (8) container chassis and three (3) reachstackers.		State:
		City:
		SDC:
Purpose: The newer container chassis allow for a decrease in vessel turn-around time. The new reachstackers will increase hours between down times for maintenance.		Port Share Committed:
JDE NUM: 100944, 100529		Port Share Forecasted:
RTP Related:		Private:
Recent Study:		Other:
<input type="checkbox"/> Conditioned Project	<input type="checkbox"/> RTP 2025 Constrained	Unfunded: \$1,750,000.00
<input type="checkbox"/> Identified in STIP	<input type="checkbox"/> RTP 2025 Illustrative	Estimate Rating:

Project Name: Terminal 6 Container Crane Modernization

Map ID: 38	Time Frame: 5 years	Total Cost: \$4,000,000.00
Project Type: Marine		Year of Cost Estimate:
Operation Area: Priority Map		Federal:
Project Description: On Crane 6379, upgrade electronics and provide new programmable logic controllers for the motor drives. On Crane 6378 (heavy lift crane) upgrade the electronics, provide new motor drive. Relocate in the line-up and paint the trolley girder beam.		State:
		City:
		SDC:
Purpose: This project will modernize some of the Port's older container cranes, improving efficiencies in the transfer of containerized cargo between four modes of transportation: ocean vessel, rail, truck, and river barge.		Port Share Committed:
JDE NUM: 100952, 100953		Port Share Forecasted:
RTP Related:		Private:
Recent Study:		Other:
<input type="checkbox"/> Conditioned Project	<input type="checkbox"/> RTP 2025 Constrained	Unfunded: \$4,000,000.00
<input type="checkbox"/> Identified in STIP	<input type="checkbox"/> RTP 2025 Illustrative	Estimate Rating:

PRIORITY PROJECTS

Project Name: Terminal 4 Barge Facility Relocation

Map ID: 39

Time Frame: 5 years

Total Cost: \$8,000,000.00

Project Type: Marine

Year of Cost

Operation Area Priority Map

Estimate:

Project Description: Design and construct a new barge receiving facility at the Terminal 4 grain facility. Slip 1, the location of the existing barge facility, will potentially be used as a confined disposal facility as part of the Terminal 4 Early Action Sediment Clean-up.

Federal:

State:

City:

SDC:

Purpose: Approximately 40 to 50 percent of all wheat and barley exported from the Columbia/Willamette River system is delivered to the export terminal by barge. This includes wheat grown by Oregon grain growers.

Port Share

Committed:

JDE NUM: 100472

Port Share

Forecasted:

RTP Related:

Private:

Recent Study:

Other:

- Conditioned Project
- RTP 2025 Constrained
- Identified in STIP
- RTP 2025 Illustrative

Unfunded: \$8,000,000.00

Estimate Rating:

Project Name: Berth Deepening: Berths 401, 501, and 503

Map ID: 40

Time Frame: 5 years

Total Cost: \$1,600,000.00

Project Type: Marine

Year of Cost

Operation Area Priority Map

Estimate:

Project Description: Deepen berths at Terminals 4 and 5 to allow deeper draft vessels to transit the planned 43 foot channel.

Federal:

State:

City:

SDC:

Purpose: Allow better utilization of panamax-class bulk vessels.

Port Share

Committed:

JDE NUM: 100863

Port Share

Forecasted:

RTP Related:

Private:

Recent Study:

Other:

- Conditioned Project
- RTP 2025 Constrained
- Identified in STIP
- RTP 2025 Illustrative

Unfunded: \$1,600,000.00

Estimate Rating:

PRIORITY PROJECTS

Project Name: TTD Relocation of Taxiway B Phase 1 & 2

Map ID: 41	Time Frame: 5 years	Total Cost: \$2,200,000.00
Project Type: Aviation		Year of Cost Estimate:
Operation Area: Priority Map		Federal:
Project Description: Relocate Taxiway B 50 feet to the south.		State:
		City:
		SDC:
Purpose: Comply with new FAA requirements for distances between taxiways and runways. Reduce FAA restrictions on the size of aircraft using the runway.		Port Share Committed:
JDE NUM: 100282 100281		Port Share Forecasted:
RTP Related:		Private:
Recent Study:		Other:
<input type="checkbox"/> Conditioned Project	<input type="checkbox"/> RTP 2025 Constrained	Unfunded: \$2,200,000.00
<input type="checkbox"/> Identified in STIP	<input type="checkbox"/> RTP 2025 Illustrative	Estimate Rating:

Project Name: Sundial Road Improvement

Map ID: 42	Time Frame: 5 years	Total Cost: \$772,600.00
Project Type: Road		Year of Cost Estimate: 2007
Operation Area: Priority Map		Federal:
Project Description: Improve the roadway section from Marine Drive to the north access of the Troutdale Reynolds Industrial Park.		State:
		City:
		SDC:
Purpose: Accommodate Troutdale Reynolds Industrial Park and other traffic.		Port Share Committed:
JDE NUM:		Port Share Forecasted:
RTP Related:		Private:
Recent Study:		Other:
<input checked="" type="checkbox"/> Conditioned Project	<input type="checkbox"/> RTP 2025 Constrained	Unfunded: \$772,600.00
<input type="checkbox"/> Identified in STIP	<input type="checkbox"/> RTP 2025 Illustrative	Estimate Rating: 1a

PRIORITY PROJECTS

Project Name: 223rd Avenue Widening

Map ID: 43	Time Frame: 5 years	Total Cost: \$3,667,000.00
Project Type: Road		Year of Cost Estimate:
Operation Area: Priority Map		Federal:
Project Description: Widen to three lanes between Halsey St and Marine Drive.		State:
		City:
		SDC:
Purpose: Upgrade the facility to major collector urban street standards.		Port Share Committed:
JDE NUM:		Port Share Forecasted:
RTP Related:		Private:
Recent Study:		Other:
<input type="checkbox"/> Conditioned Project	<input type="checkbox"/> RTP 2025 Constrained	Unfunded: \$3,667,000.00
<input type="checkbox"/> Identified in STIP	<input type="checkbox"/> RTP 2025 Illustrative	Estimate Rating: N/A

Project Name: 257th Interchange at I-84 Improvement

Map ID: 44	Time Frame: 10 years	Total Cost: \$9,400,000.00
Project Type: Road		Year of Cost Estimate: 2006
Operation Area: Priority Map		Federal: \$1,000,000.00
Project Description: Improve function of split diamond interchange at 257th.		State: \$100,000.00
		City: \$100,000.00
		SDC:
Purpose: Improve access from north and south of the interchange to I-84.		Port Share Committed:
JDE NUM:		Port Share Forecasted:
RTP Related: 2005		Private:
Recent Study:		Other:
<input type="checkbox"/> Conditioned Project	<input checked="" type="checkbox"/> RTP 2025 Constrained	Unfunded: \$8,200,000.00
<input checked="" type="checkbox"/> Identified in STIP	<input checked="" type="checkbox"/> RTP 2025 Illustrative	Estimate Rating: N/A

PRIORITY PROJECTS

Project Name: 238th Avenue Extension

Map ID: 45	Time Frame: 10 years	Total Cost: \$14,500,000.00
Project Type: Road		Year of Cost
Operation Area: Priority Map		Estimate:
Project Description: Construct new connector between Sandy Blvd. and Marine Drive.		Federal:
		State:
		City:
		SDC:
Purpose: To improve access from developing industrial areas to the interstate.		Port Share
		Committed:
JDE NUM:		Port Share
RTP Related:		Forecasted:
Recent Study:		Private:
		Other:
<input type="checkbox"/> Conditioned Project	<input type="checkbox"/> RTP 2025 Constrained	Unfunded: \$14,500,000.00
<input type="checkbox"/> Identified in STIP	<input type="checkbox"/> RTP 2025 Illustrative	Estimate Rating: N/A

Project Name: Freight Data Repository

Map ID: 46	Time Frame: 5 years	Total Cost:
Project Type: ITS		Year of Cost
Operation Area: Priority Map		Estimate:
Project Description: Create a repository of regional freight data (primarily truck data), including from the region's Freight Data Collection project.		Federal:
		State:
		City:
		SDC:
Purpose: Collect truck counts from jurisdictions in the region using a tool that standardizes reported data and makes it available for use by others.		Port Share
		Committed:
JDE NUM:		Port Share
RTP Related:		Forecasted:
Recent Study:		Private:
		Other:
<input type="checkbox"/> Conditioned Project	<input type="checkbox"/> RTP 2025 Constrained	Unfunded:
<input type="checkbox"/> Identified in STIP	<input type="checkbox"/> RTP 2025 Illustrative	Estimate Rating: N/A

PRIORITY PROJECTS

Project Name: Terminal 2 Rail Improvement

Map ID: 47	Time Frame: 5 years	Total Cost: \$1,535,000.00
Project Type: Rail		Year of Cost Estimate: 2007
Operation Area: Priority Map		Federal:
Project Description: Add approximately 600 feet to the inner track (Track 10) and connect it with the outer loop (Track 15). A third track may also be constructed and a rail scaling station added.		State:
		City:
		SDC:
Purpose: Increase rail capacity and operating efficiencies at Terminal 2.		Port Share Committed:
		Port Share Forecasted:
JDE NUM:		Private:
RTP Related:		Other:
Recent Study:		Unfunded: \$1,535,000.00
<input type="checkbox"/> Conditioned Project	<input type="checkbox"/> RTP 2025 Constrained	Estimate Rating: 3c
<input type="checkbox"/> Identified in STIP	<input type="checkbox"/> RTP 2025 Illustrative	

Project Name: PSU ITS Expansion

Map ID: 48	Time Frame: 5 years	Total Cost:
Project Type: ITS		Year of Cost Estimate:
Operation Area: Priority Map		Federal:
Project Description: Expand PSU's existing web based ITS "count sensor" program beyond the freeway to some key arterials throughout the region.		State:
		City:
		SDC:
Purpose: To secure truck flow and congestion data.		Port Share Committed:
		Port Share Forecasted:
JDE NUM:		Private:
RTP Related:		Other:
Recent Study:		Unfunded:
<input type="checkbox"/> Conditioned Project	<input type="checkbox"/> RTP 2025 Constrained	Estimate Rating: N/A
<input type="checkbox"/> Identified in STIP	<input type="checkbox"/> RTP 2025 Illustrative	

PRIORITY PROJECTS

Project Name: HIO High Speed Exits

Map ID: 49	Time Frame: 5 years	Total Cost: \$2,430,000.00
Project Type: Aviation		Year of Cost Estimate:
Operation Area: Priority Map		Federal:
Project Description: Construct high speed exits on the airport's longest runway.		State:
		City:
Purpose: Relieve a portion of the over capacity of the airport system until a third runway is constructed in 2010 and 2011.		SDC:
		Port Share Committed:
JDE NUM: 100464		Port Share Forecasted:
RTP Related:		Private:
Recent Study:		Other:
<input type="checkbox"/> Conditioned Project	<input type="checkbox"/> RTP 2025 Constrained	Unfunded: \$2,430,000.00
<input type="checkbox"/> Identified in STIP	<input type="checkbox"/> RTP 2025 Illustrative	Estimate Rating:

Project Name: HIO Taxiway A3 Extension

Map ID: 50	Time Frame: 5 years	Total Cost: \$2,200,000.00
Project Type: Aviation		Year of Cost Estimate:
Operation Area: Priority Map		Federal:
Project Description: Extend Taxiway A3 near the airport's longest runway.		State:
		City:
Purpose: Allow aircraft to exit the runway faster and relieve a portion of the over capacity of the airport system until a third runway is constructed in 2010 and 2011.		SDC:
		Port Share Committed:
JDE NUM: 100655		Port Share Forecasted:
RTP Related:		Private:
Recent Study:		Other:
<input type="checkbox"/> Conditioned Project	<input type="checkbox"/> RTP 2025 Constrained	Unfunded: \$2,200,000.00
<input type="checkbox"/> Identified in STIP	<input type="checkbox"/> RTP 2025 Illustrative	Estimate Rating:

PRIORITY PROJECTS

Project Name: Mulino Airport Development Improvements

Map ID: 51	Time Frame: 5 years	Total Cost: \$2,200,000.00
Project Type: Aviation		Year of Cost Estimate: 2007
Operation Area: Priority Map		Federal:
Project Description: Construct private access improvements as part of a larger project of development improvements.		State:
		City:
		SDC:
Purpose: Construct fuel facilities, hangars, and provide vehicle access to support redevelopable parcels.		Port Share Committed: \$1,200,000.00
JDE NUM:		Port Share Forecasted: \$200,000.00
RTP Related:		Private:
Recent Study:		Other:
<input type="checkbox"/> Conditioned Project	<input type="checkbox"/> RTP 2025 Constrained	Unfunded: \$800,000.00
<input type="checkbox"/> Identified in STIP	<input type="checkbox"/> RTP 2025 Illustrative	Estimate Rating:

PDX/PIC Projects

2008 Port Transportation Improvement Plan

KEY TO FEATURES

Priority/Non-Priority

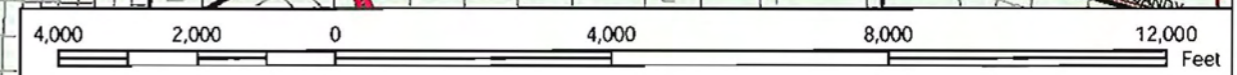
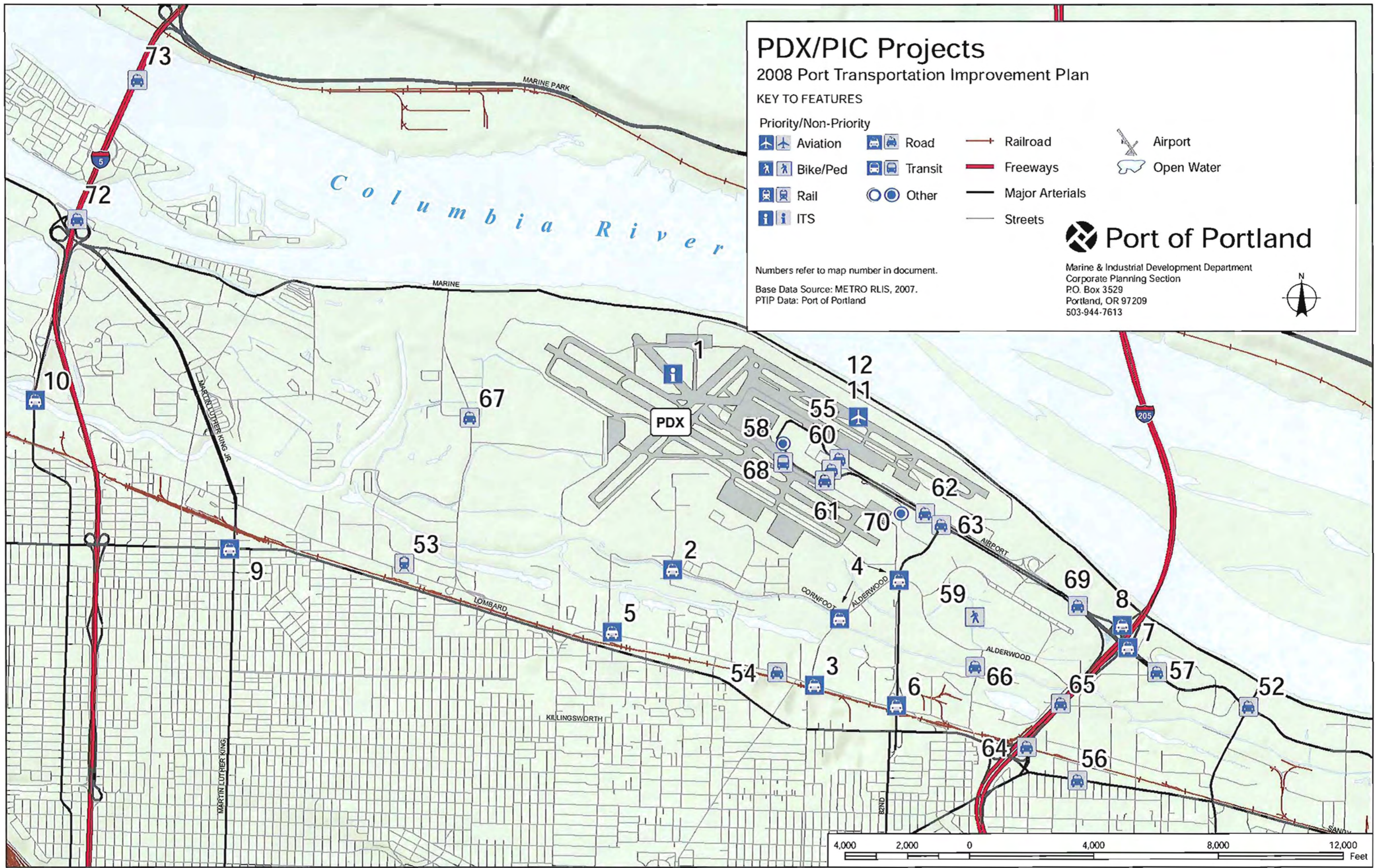
- | | | | |
|----------|---------|-----------------|------------|
| Aviation | Road | Railroad | Airport |
| Bike/Ped | Transit | Freeways | Open Water |
| Rail | Other | Major Arterials | |
| ITS | | Streets | |

Numbers refer to map number in document.

Base Data Source: METRO RLIS, 2007.
PTIP Data: Port of Portland



Marine & Industrial Development Department
Corporate Planning Section
P.O. Box 3529
Portland, OR 97209
503-944-7613



PDX/PIC AREA PROJECTS

Project Name: 122nd Ave./Airport Way Intersection Improvement

Map ID: 52	Time Frame: 5 years	Total Cost: \$895,000.00
Project Type: Road		Year of Cost Estimate: 2006
Operation Area: PDX/PIC		Federal:
Project Description: Add turn lanes, channelization and signal modifications.		State:
		City:
		SDC:
Purpose: Mitigate PDX, Cascade Station, and Portland International Center Growth Impacts.		Port Share Committed:
		Port Share Forecasted: \$895,000.00
JDE NUM: 810010		Private:
RTP Related: 4045		Other:
Recent Study: Cascade Station/Portland Int'l Center Environmental Assessment Transportation Analysis (2004)		Unfunded:
<input checked="" type="checkbox"/> Conditioned Project	<input checked="" type="checkbox"/> RTP 2025 Constrained	Estimate Rating: 2a
<input type="checkbox"/> Identified in STIP	<input checked="" type="checkbox"/> RTP 2025 Illustrative	

Project Name: 11th/13th (at Columbia Blvd.): Crossing Elimination

Map ID: 53	Time Frame: 5 years	Total Cost: \$1,000,000.00
Project Type: Rail		Year of Cost Estimate: 2007
Operation Area: PDX/PIC		Federal:
Project Description: If feasible, eliminate the at-grade crossing and improve alternate roadway access.		State:
		City:
		SDC:
Purpose: Improve Kenton Mainline operation and eliminate a modal conflict.		Port Share Committed:
		Port Share Forecasted:
JDE NUM:		Private:
RTP Related:		Other:
Recent Study:		Unfunded: \$1,000,000.00
<input type="checkbox"/> Conditioned Project	<input type="checkbox"/> RTP 2025 Constrained	Estimate Rating: N/A
<input type="checkbox"/> Identified in STIP	<input type="checkbox"/> RTP 2025 Illustrative	

PDX/PIC AREA PROJECTS

Project Name: Sandy Boulevard/105th Avenue

Map ID: 56	Time Frame: 5 years	Total Cost: \$327,000.00
Project Type: Road		Year of Cost Estimate: 2006
Operation Area: PDX/PIC		Federal:
Project Description: Add a southbound left-turn lane.		State:
		City:
		SDC:
Purpose: Accommodate projected growth from the development of CS/PIC.		Port Share Committed:
JDE NUM:		Port Share Forecasted:
RTP Related:		Private: \$327,000.00
Recent Study: Cascade Station/Portland Int'l Center Environmental Assessment Transportation Analysis (2004)		Other:
<input type="checkbox"/> Conditioned Project	<input type="checkbox"/> RTP 2025 Constrained	Unfunded:
<input type="checkbox"/> Identified in STIP	<input type="checkbox"/> RTP 2025 Illustrative	Estimate Rating: N/A

Project Name: Airport Way/Holman Street

Map ID: 57	Time Frame: 5 years	Total Cost: \$440,000.00
Project Type: Road		Year of Cost Estimate: 2006
Operation Area: PDX/PIC		Federal:
Project Description: Add a northbound right-turn lane and extend the northbound left-turn lane		State:
		City:
		SDC:
Purpose: Accommodate projected traffic growth from the development of CS/PIC		Port Share Committed:
JDE NUM:		Port Share Forecasted:
RTP Related:		Private: \$440,000.00
Recent Study: Cascade Station/Portland Int'l Center Environmental Assessment Transportation Analysis (2004)		Other:
<input type="checkbox"/> Conditioned Project	<input type="checkbox"/> RTP 2025 Constrained	Unfunded:
<input type="checkbox"/> Identified in STIP	<input type="checkbox"/> RTP 2025 Illustrative	Estimate Rating: 2b

PDX/PIC AREA PROJECTS

Project Name: PDX Transportation Demand Management (TDM)

Map ID: 58	Time Frame: 5 years	Total Cost:
Project Type: Other		Year of Cost Estimate:
Operation Area: PDX/PIC		Federal:
Project Description: Implement strategies at PDX and PIC properties that reduce auto trips in the airport area. Programs to be undertaken with other area businesses/developers to maximize effectiveness; possible administration through a transportation management association (TMA). Costs will be ongoing operational costs, not capital costs.		State:
		City:
		SDC:
Purpose: Fulfill TDM requirements of PDX Master Plan. Implement TDM projects and programs recommended in the PDX Alternative Modes Study.		Port Share Committed:
		Port Share Forecasted:
JDE NUM:		Private:
RTP Related:		Other:
Recent Study: PDX Employee TDM Program Study (2002)		Unfunded:
<input type="checkbox"/> Conditioned Project	<input type="checkbox"/> RTP 2025 Constrained	Estimate Rating: N/A
<input type="checkbox"/> Identified in STIP	<input type="checkbox"/> RTP 2025 Illustrative	

Project Name: PIC Ped/Bike Network

Map ID: 59	Time Frame: 10 years	Total Cost: \$1,163,835.00
Project Type: Bike/Ped		Year of Cost Estimate: 2007
Operation Area: PDX/PIC		Federal:
Project Description: Construct bike and pedestrian facilities as shown in the CS/PIC Plan District.		State:
		City:
		SDC:
Purpose: Improve bike/ped circulation in PIC.		Port Share Committed:
		Port Share Forecasted:
JDE NUM:		Private:
RTP Related: 4086		Other:
Recent Study: East Airport Area Ped.&Bike Study(1999)		Unfunded: \$1,163,835.00
<input type="checkbox"/> Conditioned Project	<input checked="" type="checkbox"/> RTP 2025 Constrained	Estimate Rating: 3c
<input type="checkbox"/> Identified in STIP	<input checked="" type="checkbox"/> RTP 2025 Illustrative	

PDX/PIC AREA PROJECTS

Project Name: Airport Way East Terminal Access Link Roadway

Map ID: 60	Time Frame: 10 years	Total Cost: \$16,900,000.00
Project Type: Road		Year of Cost Estimate: 2005
Operation Area: PDX/PIC		Federal:
Project Description: Construct Airport Way East Terminal access link roadway (Terminal Access Study, project R6, to be scoped by PDX Master Plan).		State:
		City:
		SDC:
Purpose: Facilitate direct East Terminal access, preventing failure of Main Terminal Roadway.		Port Share Committed:
		Port Share Forecasted: \$16,900,000.00
JDE NUM: 100619		Private:
RTP Related: 4033		Other:
Recent Study: PDX Term. Access Study (2005)		Unfunded:
<input type="checkbox"/> Conditioned Project	<input checked="" type="checkbox"/> RTP 2025 Constrained	Estimate Rating: 3c
<input type="checkbox"/> Identified in STIP	<input checked="" type="checkbox"/> RTP 2025 Illustrative	

Project Name: Airport Way Return and Exit Roadways

Map ID: 61	Time Frame: 10 years	Total Cost: \$5,660,000.00
Project Type: Road		Year of Cost Estimate: 2005
Operation Area: PDX/PIC		Federal:
Project Description: Realign the existing Terminal Exit Roadway to the north to facilitate the construction of Concourse B and Terminal Expansion East		State:
		City:
		SDC:
Purpose: Maintain adequate access and circulation in the terminal area.		Port Share Committed: \$0.00
		Port Share Forecasted: \$5,660,000.00
JDE NUM: 100620		Private:
RTP Related: 4031		Other:
Recent Study: PDX Term. Access Study (2005)		Unfunded: \$0.00
<input type="checkbox"/> Conditioned Project	<input checked="" type="checkbox"/> RTP 2025 Constrained	Estimate Rating: 3c
<input type="checkbox"/> Identified in STIP	<input checked="" type="checkbox"/> RTP 2025 Illustrative	

PDX/PIC AREA PROJECTS

Project Name: Widen Airport Way West of 82nd

Map ID: 62	Time Frame: 10 years	Total Cost: \$7,910,000.00
Project Type: Road		Year of Cost Estimate: 2007
Operation Area: PDX/PIC		Federal:
Project Description: Widen Airport Way from terminal to 82nd Ave.		State:
		City:
		SDC:
Purpose: Provide improved traffic flow to the PDX Terminal and the surrounding PDX properties.		Port Share Committed: \$0.00
		Port Share Forecasted: \$7,910,000.00
JDE NUM: 100773		Private:
RTP Related: 4021		Other:
Recent Study: Airport Way Rehabilitation Program (2007)		Unfunded: \$0.00
<input type="checkbox"/> Conditioned Project	<input checked="" type="checkbox"/> RTP 2025 Constrained	Estimate Rating: 3c
<input type="checkbox"/> Identified in STIP	<input checked="" type="checkbox"/> RTP 2025 Illustrative	

Project Name: 82nd Ave./Airport Way Grade Separation

Map ID: 63	Time Frame: 10 years	Total Cost: \$92,000,000.00
Project Type: Road		Year of Cost Estimate: 2007
Operation Area: PDX/PIC		Federal:
Project Description: Construct grade-separated overcrossing.		State:
		City:
		SDC:
Purpose: Provide efficient movement of traffic to PDX properties.		Port Share Committed:
		Port Share Forecasted: \$92,000,000.00
JDE NUM:		Private:
RTP Related: 4028		Other:
Recent Study: East Airport Area Traffic Needs Study(1996)		Unfunded:
<input type="checkbox"/> Conditioned Project	<input checked="" type="checkbox"/> RTP 2025 Constrained	Estimate Rating: 3c
<input type="checkbox"/> Identified in STIP	<input checked="" type="checkbox"/> RTP 2025 Illustrative	

PDX/PIC AREA PROJECTS

Project Name: I-205 Auxiliary Lane NB

Map ID: 64 **Time Frame:** 20 years

Project Type: Road

Operation Area: PDX/PIC

Project Description: New auxiliary lane from I-84 to I-205 NB before Columbia Blvd.

Purpose: Provide additional capacity for anticipated growth in area traffic.

JDE NUM:

RTP Related: 2072

Recent Study: Airport Area Transp. Study (1998)

Conditioned Project RTP 2025 Constrained

Identified in STIP RTP 2025 Illustrative

Total Cost:

Year of Cost Estimate:

Federal:

State:

City:

SDC:

Port Share Committed:

Port Share Forecasted:

Private:

Other:

Unfunded:

Estimate Rating:

Project Name: I-205 Auxiliary Lane SB

Map ID: 65 **Time Frame:** 20 years

Project Type: Road

Operation Area: PDX/PIC

Project Description: New I-205 auxiliary lane from Airport Way to Columbia Blvd.

Purpose: Provide additional capacity for anticipated growth in I-205 corridor.

JDE NUM:

RTP Related: 2071

Recent Study: Airport Area Transp. Study (1998)

Conditioned Project RTP 2025 Constrained

Identified in STIP RTP 2025 Illustrative

Total Cost:

Year of Cost Estimate:

Federal:

State:

City:

SDC:

Port Share Committed:

Port Share Forecasted:

Private:

Other:

Unfunded:

Estimate Rating:

PDX/PIC AREA PROJECTS

Project Name: 92nd Drive (Columbia Way to Alderwood Rd.)

Map ID: 66	Time Frame: 5 years	Total Cost: \$2,406,547.00
Project Type: Road		Year of Cost Estimate: 2005
Operation Area: PDX/PIC		Federal:
Project Description: Improve NE 92nd Drive from Columbia Slough to Alderwood Road.		State:
		City:
		SDC:
Purpose: Provide efficient movement of traffic between Columbia Way and Alderwood Road.		Port Share Committed: \$1,289,255.00
JDE NUM: 810017		Port Share Forecasted:
RTP Related: 4039		Private: \$1,117,292.00
Recent Study:		Other:
<input type="checkbox"/> Conditioned Project	<input checked="" type="checkbox"/> RTP 2025 Constrained	Unfunded: \$0.00
<input type="checkbox"/> Identified in STIP	<input checked="" type="checkbox"/> RTP 2025 Illustrative	Estimate Rating: N/A

Project Name: SW Quad Access

Map ID: 67	Time Frame: 5 years	Total Cost: \$5,917,500.00
Project Type: Road		Year of Cost Estimate: 2007
Operation Area: PDX/PIC		Federal:
Project Description: Provide street access from 33rd Ave. into SW Quad.		State:
		City:
		SDC:
Purpose: Provide efficient movement of traffic to developing PDX properties.		Port Share Committed:
JDE NUM: 100757		Port Share Forecasted: \$5,917,500.00
RTP Related: 4017		Private:
Recent Study: PDX Conditional Use Master Plan (2003)		Other:
<input type="checkbox"/> Conditioned Project	<input checked="" type="checkbox"/> RTP 2025 Constrained	Unfunded:
<input type="checkbox"/> Identified in STIP	<input checked="" type="checkbox"/> RTP 2025 Illustrative	Estimate Rating: 3c

PDX/PIC AREA PROJECTS

Project Name: PDX Light Rail Station/Track Realignment

Map ID: 68	Time Frame: 10 years	Total Cost: \$14,000,000.00
Project Type: Transit		Year of Cost Estimate: 2006
Operation Area: PDX/PIC		Federal:
Project Description: Realign light rail track into terminal building.		State:
		City:
		SDC:
Purpose: Accommodate terminal expansion plans.		Port Share Committed:
		Port Share Forecasted: \$14,000,000.00
JDE NUM: 100662		Private:
RTP Related: 4060		Other:
Recent Study: PDX Term. Access Study (2005)		Unfunded:
<input type="checkbox"/> Conditioned Project	<input checked="" type="checkbox"/> RTP 2025 Constrained	Estimate Rating: 3c
<input type="checkbox"/> Identified In STIP	<input checked="" type="checkbox"/> RTP 2025 Illustrative	

Project Name: Airport Way Braided Ramps

Map ID: 69	Time Frame: 20 years	Total Cost: \$59,000,000.00
Project Type: Road		Year of Cost Estimate: 2007
Operation Area: PDX/PIC		Federal:
Project Description: Construct braided ramps between the I-205 interchange and Cascade Interchange.		State:
		City:
		SDC:
Purpose: Maintain safety and capacity of Airport Way and interchanges.		Port Share Committed:
		Port Share Forecasted:
JDE NUM:		Private:
RTP Related:		Other:
Recent Study: PDX Airport Way ROW Concept (1999)		Unfunded: \$59,000,000.00
<input type="checkbox"/> Conditioned Project	<input type="checkbox"/> RTP 2025 Constrained	Estimate Rating: 3c
<input type="checkbox"/> Identified In STIP	<input type="checkbox"/> RTP 2025 Illustrative	

PDX/PIC AREA PROJECTS

Project Name: Alternative Fuels Station

Map ID: 70

Time Frame: 5 years

Total Cost: \$1,000,000.00

Project Type: Other

Year of Cost

Estimate: 2001

Operation Area PDX/PIC

Federal:

Project Description: Construct a PDX alternative fuels station that will be accessible from both airside and landside

State:

City:

SDC:

Purpose: Provide refueling capabilities for both airside and landside (public) CNG vehicles. Encourage airport businesses to convert fleets to CNG to improve air quality.

Port Share Committed:

JDE NUM:

Port Share Forecasted:

RTP Related:

Private:

Recent Study:

Other:

Conditioned Project

RTP 2025 Constrained

Unfunded: \$1,000,000.00

Identified in STIP


RTP 2025 Illustrative

Estimate Rating: 3c

Marine Terminal and Rivergate Area District Projects

2008 Port Transportation Improvement Plan

KEY TO FEATURES

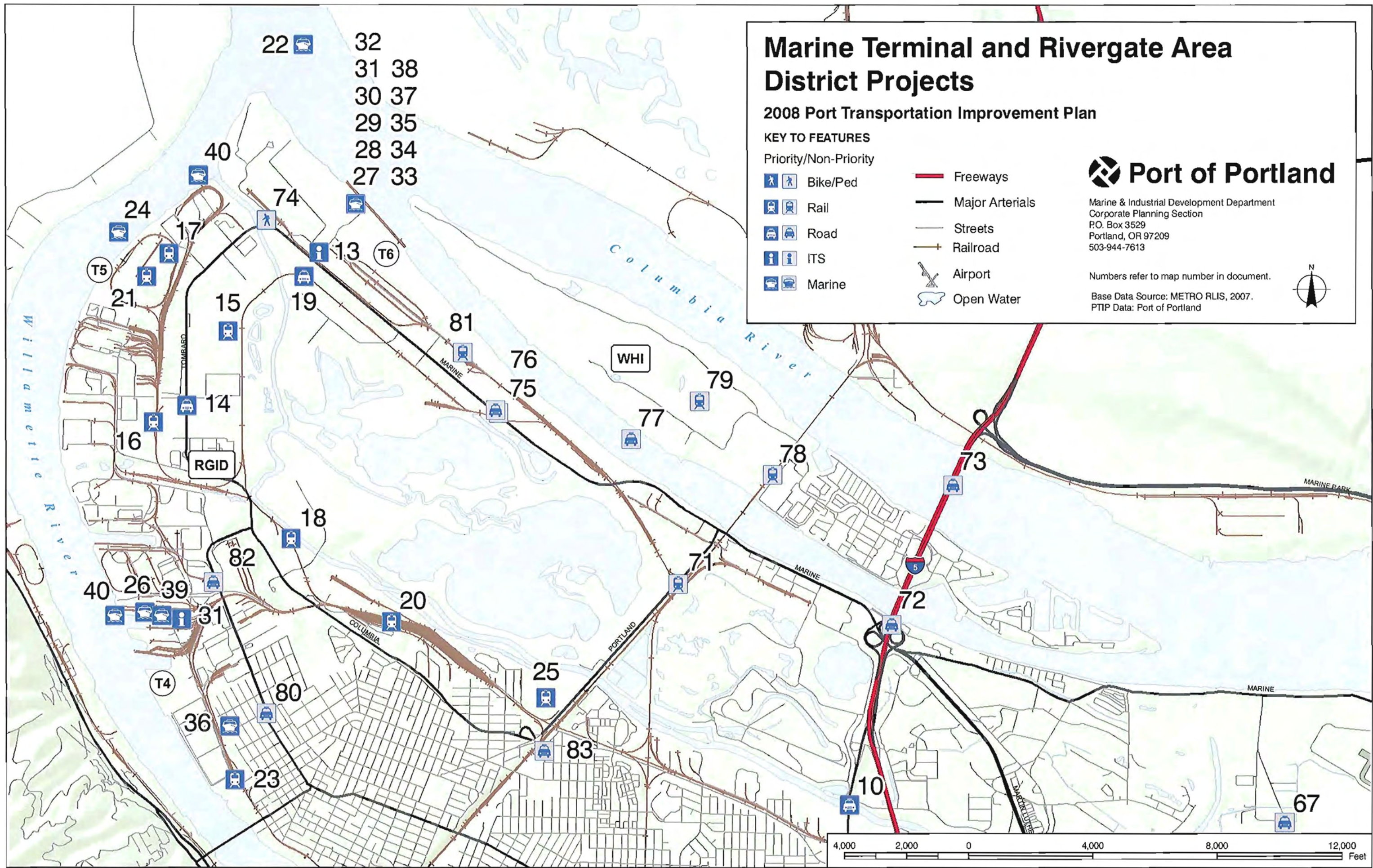
- | | | |
|---|----------|---|
| Priority/Non-Priority | |  Freeways |
|   | Bike/Ped |  Major Arterials |
|   | Rail |  Streets |
|   | Road |  Railroad |
|   | ITS |  Airport |
|   | Marine |  Open Water |



Marine & Industrial Development Department
Corporate Planning Section
P.O. Box 3529
Portland, OR 97209
503-944-7613

Numbers refer to map number in document.

Base Data Source: METRO RLIS, 2007.
PTIP Data: Port of Portland



RIVERGATE AREA PROJECTS

Project Name: North Portland Junction

Map ID: 71	Time Frame: 10 years	Total Cost: \$9,160,000.00
Project Type: Rail		Year of Cost Estimate: 2003
Operation Area: Rivergate		Federal:
Project Description: Upgrade railroad with revised crossovers, centralized traffic control tie-in and increased turning radius.		State:
		City:
Purpose: Accommodate higher rail speeds at the junction which provides greater capacity.		SDC:
		Port Share Committed:
JDE NUM:		Port Share Forecasted:
RTP Related: 4093		Private:
Recent Study: I-5 Rail Capacity Study (HDR, 2003)		Other:
<input type="checkbox"/> Conditioned Project	<input type="checkbox"/> RTP 2025 Constrained	Unfunded: \$9,160,000.00
<input type="checkbox"/> Identified in STIP	<input checked="" type="checkbox"/> RTP 2025 Illustrative	Estimate Rating: N/A

Project Name: I-5 Delta Park Widening

Map ID: 72	Time Frame: 5 years	Total Cost: \$68,963,000.00
Project Type: Road		Year of Cost Estimate: 2006
Operation Area: Rivergate		Federal: \$31,497,581.00
Project Description: Widen I-5 to 6 lanes (Victory Blvd. to Lombard)		State: \$37,465,419.00
		City:
Purpose: Improve efficiency and safety on I-5 between Victory Blvd. and Lombard.		SDC:
		Port Share Committed:
JDE NUM:		Port Share Forecasted:
RTP Related: 4005		Private:
Recent Study: An Environmental Assessment is in progress for this project.		Other:
<input type="checkbox"/> Conditioned Project	<input checked="" type="checkbox"/> RTP 2025 Constrained	Unfunded:
<input checked="" type="checkbox"/> Identified in STIP	<input checked="" type="checkbox"/> RTP 2025 Illustrative	Estimate Rating:

RIVERGATE AREA PROJECTS

Project Name: Terminal 6 Internal Overcrossing

Map ID: 75

Time Frame: 5 years

Total Cost: \$3,500,000.00

Project Type: Road

Year of Cost

Estimate: 2006

Operation Area: Rivergate

Federal:

Project Description: Construct a rail overcrossing at Terminal 6.

State:

City:

SDC:

Purpose: Increase efficient movement for rail and Terminal 6 tenants.

Port Share

Committed:

JDE NUM: 100324

Port Share

Forecasted: \$3,500,000.00

RTP Related:

Private:

Recent Study: Marine Terminal Master Plan 2020 (2003)

Other:

- Conditioned Project
- RTP 2025 Constrained
- Identified in STIP
- RTP 2025 Illustrative

Unfunded:

Estimate Rating: 2b

Project Name: Marine Dr. Improvement Phase 2

Map ID: 76

Time Frame: 20 years

Total Cost: \$18,000,000.00

Project Type: Road

Year of Cost

Estimate: 2003

Operation Area: Rivergate

Federal:

Project Description: Construct rail overcrossing on Marine Dr.

State:

City:

SDC:

Purpose: Avoid road/rail conflict.

Port Share

Committed:

JDE NUM:

Port Share

Forecasted:

RTP Related: 4064

Private:

Recent Study:

Other:

- Conditioned Project
- RTP 2025 Constrained
- Identified in STIP
- RTP 2025 Illustrative

Unfunded: \$18,000,000.00

Estimate Rating: 3c

RIVERGATE AREA PROJECTS

Project Name: West Hayden Island Bridge and Access Rd.

Map ID: 77

Time Frame: 10 years

Total Cost: \$49,800,000.00

Project Type: Road

Year of Cost

Estimate: 2007

Operation Area: Rivergate

Federal:

Project Description: Construct 4-lane bridge to West Hayden Island, west alignment with 90' clearance and associated ramp infrastructure.

State:

City:

SDC:

Purpose: Provide access to Port's marine development and to existing development on Hayden Island.

Port Share Committed:

JDE NUM:

Port Share Forecasted:

RTP Related: 4061

Private:

Recent Study: West Hayden Island Marine Terminal Development Plan Highway Transportation Analysis (1998)

Other:

- Conditioned Project
- RTP 2025 Constrained
- Identified in STIP
- RTP 2025 Illustrative

Unfunded: \$49,800,000.00

Estimate Rating:

Project Name: West Hayden Island Rail Access

Map ID: 78

Time Frame: 20 years

Total Cost:

Project Type: Rail

Year of Cost

Estimate:

Operation Area: Rivergate

Federal:

Project Description: Rail access to support West Hayden Island development.

State:

City:

SDC:

Purpose: Advance rail-dependent development.

Port Share Committed:

JDE NUM:

Port Share Forecasted:

RTP Related: 4069

Private:

Recent Study: West Hayden Island Rail Access Feasibility Study (1994)

Other:

- Conditioned Project
- RTP 2025 Constrained
- Identified in STIP
- RTP 2025 Illustrative

Unfunded:

Estimate Rating:

RIVERGATE AREA PROJECTS

Project Name: West Hayden Island Rail Yard

Map ID: 79 **Time Frame:** 20 years

Project Type: Rail

Operation Area: Rivergate

Project Description: Seven track rail yard connected to facility trackage.

Purpose: Advance rail development on West Hayden Island.

JDE NUM:

RTP Related: 4078

Recent Study: West Hayden Island Rail Access Feasibility Study (1994)

Conditioned Project RTP 2025 Constrained

Identified in STIP RTP 2025 Illustrative

Total Cost:

Year of Cost Estimate:

Federal:

State:

City:

SDC:

Port Share Committed:

Port Share Forecasted:

Private:

Other:

Unfunded:

Estimate Rating:

Project Name: Lombard St./St. Louis Ave./Ivanhoe St. Multimodal Improvements

Map ID: 80 **Time Frame:** 5 years

Project Type: Road

Operation Area: Rivergate

Project Description: Improvements could include restriping, curb extensions and other pedestrian and bicycle amenities on Lombard St. that do not impede truck movement, as well as intersection improvements at St. Louis Ave. and at Philadelphia Ave., such as realignment and signalization.

Purpose: Maintain truck movement and minimize conflicts with bicycles and pedestrians between Philadelphia Ave. and Lombard St. at Pier Park.

JDE NUM:

RTP Related: 1137

Recent Study: St. Johns Truck Strategy Report&Recommendation (2001)

Conditioned Project RTP 2025 Constrained

Identified in STIP RTP 2025 Illustrative

Total Cost: \$1,129,821.00

Year of Cost Estimate: 2005

Federal: \$1,013,788.00

State:

City: \$116,033.00

SDC:

Port Share Committed:

Port Share Forecasted:

Private:

Other:

Unfunded:

Estimate Rating: N/A

RIVERGATE AREA PROJECTS

Project Name: T6 Rail Support Yard Improvements

Map ID: 81 **Time Frame:** 10 years

Project Type: Rail

Operation Area: Rivergate

Project Description: Construct an additional 6,800 feet of arrival/departure track and 8,500 feet of storage track.

Purpose: Increase Terminal 6 rail capacity.

JDE NUM:

RTP Related:

Recent Study: Mainline Management Terminal 6 Rail Study (2006)

Conditioned Project **RTP 2025 Constrained**

Identified in STIP **RTP 2025 Illustrative**

Total Cost: \$8,750,000.00

Year of Cost Estimate:

Federal:

State:

City:

SDC:

Port Share Committed:

Port Share Forecasted:

Private:

Other:

Unfunded: \$8,750,000.00

Estimate Rating: 3c

Project Name: Burgard Bridge Replacement

Map ID: 82 **Time Frame:** 5 years

Project Type: Road

Operation Area: Rivergate

Project Description: Upgrade structure.

Purpose: Replace the bridge with a slab on grade to eliminate weight restrictions.

JDE NUM:

RTP Related:

Recent Study:

Conditioned Project **RTP 2025 Constrained**

Identified in STIP **RTP 2025 Illustrative**

Total Cost: \$1,445,000.00

Year of Cost Estimate: 2004

Federal:

State: \$1,445,000.00

City:

SDC:

Port Share Committed:

Port Share Forecasted:

Private:

Other:

Unfunded:

Estimate Rating: N/A

RIVERGATE AREA PROJECTS

Project Name: Columbia Blvd./Portland Rd. Intersection Improvements

Map ID: 83

Time Frame: 5 years

Total Cost: \$600,000.00

Project Type: Road

Year of Cost

Estimate: 2006

Operation Area Rivergate

Federal:

Project Description: Redesign could include realignment of travel lanes, channelization, signalization, signing or new sidewalks and curbs.

State:

City:

SDC:

Purpose: Reinforce through truck movements on minor and major truck streets (Portland Rd. and Columbia Blvd. respectively), minimizing neighborhood cut-through traffic.

Port Share Committed:

JDE NUM:

Port Share Forecasted:

RTP Related:

Private:

Recent Study: St. Johns Truck Strategy Report&Recommendation (2001)

Other:

- Conditioned Project**
- RTP 2025 Constrained**
- Identified in STIP**
- RTP 2025 Illustrative**









Unfunded: \$600,000.00

Estimate Rating: N/A

Troutdale Area Projects

2008 Port Transportation Improvement Plan

KEY TO FEATURES

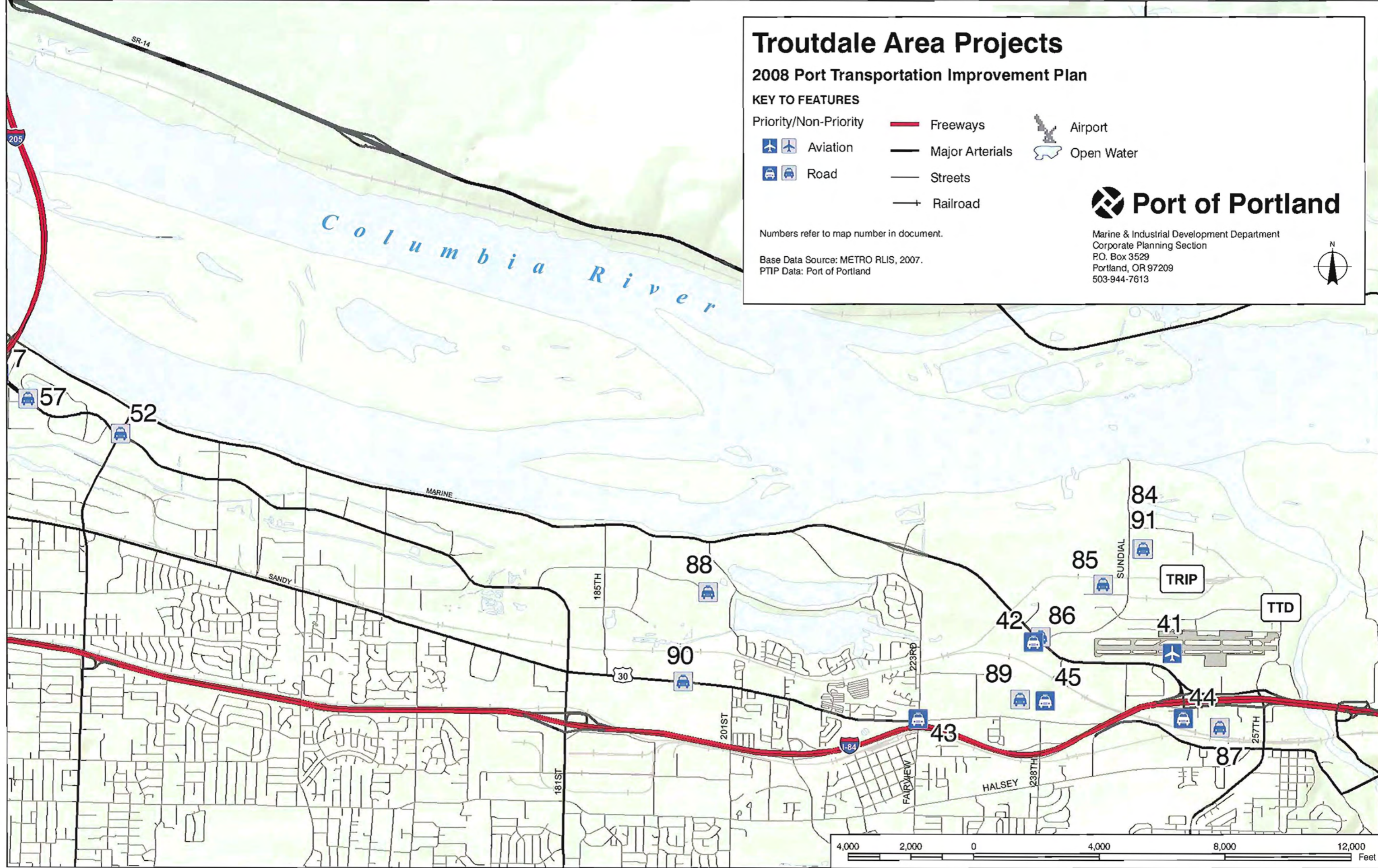
- | | | |
|--|---|--|
| Priority/Non-Priority |  Freeways |  Airport |
|  Aviation |  Major Arterials |  Open Water |
|  Road |  Streets | |
| |  Railroad | |

Numbers refer to map number in document.

Base Data Source: METRO RLIS, 2007.
PTIP Data: Port of Portland



Marine & Industrial Development Department
Corporate Planning Section
P.O. Box 3529
Portland, OR 97209
503-944-7613



TROUTDALE AREA PROJECTS

Project Name: Reynolds Site Road Access Phase 2 and 3

Map ID: 84 **Time Frame:** 10 years

Project Type: Road

Operation Area: Troutdale/TRIP

Project Description: Placeholder for potential road improvements to serve Phase 2 and 3 industrial development. Actual project will be developed in coordination with stakeholders.

Purpose: Address off-site transportation impacts.

JDE NUM:

RTP Related:

Recent Study:

Conditioned Project RTP 2025 Constrained

Identified in STIP RTP 2025 Illustrative

Total Cost:

Year of Cost Estimate:

Federal:

State:

City:

SDC:

Port Share Committed:

Port Share Forecasted:

Private:

Other:

Unfunded:

Estimate Rating: N/A

Project Name: Sundial Rd./Troutdale Reynolds Industrial Park Accesses

Map ID: 85 **Time Frame:** 5 years

Project Type: Road

Operation Area: Troutdale/TRIP

Project Description: Add northbound right turn lanes at Swigerl Way and the northmost Troutdale Reynolds Industrial Park Access.

Purpose: Accommodate Troutdale Reynolds Industrial Park traffic.

JDE NUM:

RTP Related:

Recent Study:

Conditioned Project RTP 2025 Constrained

Identified in STIP RTP 2025 Illustrative

Total Cost: \$228,917.00

Year of Cost Estimate:

Federal:

State:

City:

SDC:

Port Share Committed: \$228,917.00

Port Share Forecasted:

Private:

Other:

Unfunded:

Estimate Rating: N/A

TROUTDALE AREA PROJECTS

Project Name: Marine Drive/Sundial Road

Map ID: 86 **Time Frame:** 5 years
Project Type: Road
Operation Area: Troutdale/TRIP
Project Description: Signalize the intersection.

Purpose: Support Access to Troutdale Reynolds Industrial Park

JDE NUM:
RTP Related:
Recent Study:

- Conditioned Project RTP 2025 Constrained
- Identified in STIP RTP 2025 Illustrative

Total Cost: \$260,250.00
Year of Cost Estimate: 2007
Federal:
State:
City:
SDC:
Port Share Committed: \$260,250.00
Port Share Forecasted:
Private:
Other:
Unfunded:
Estimate Rating: 3c

Project Name: Marine Drive Improvement and Extension

Map ID: 87 **Time Frame:** 10 years
Project Type: Road
Operation Area: Troutdale/TRIP
Project Description: Convert Marine Drive one-way southbound to two-way under I-84 and widen to five lanes.

Purpose: Ensure adequate long term interchange operation.

JDE NUM:
RTP Related:
Recent Study:

- Conditioned Project RTP 2025 Constrained
- Identified in STIP RTP 2025 Illustrative

Total Cost: \$20,400,000.00
Year of Cost Estimate: 2007
Federal:
State:
City:
SDC:
Port Share Committed:
Port Share Forecasted:
Private:
Other:
Unfunded: \$20,400,000.00
Estimate Rating:

TROUTDALE AREA PROJECTS

Project Name: Riverside Drive Extension

Map ID: 88 **Time Frame:** 5 years

Project Type: Road

Operation Area: Troutdale/TRIP

Project Description: Riverside Dr. Extension (190th to Sandy Blvd.); improve to collector standards.

Purpose: Serve developing industrial parcels.

JDE NUM:

RTP Related:

Recent Study:

Conditioned Project RTP 2025 Constrained

Identified in STIP RTP 2025 Illustrative

Total Cost: \$4,500,000.00

Year of Cost Estimate:

Federal:

State:

City:

SDC:

Port Share Committed:

Port Share Forecasted:

Private:

Other:

Unfunded: \$4,500,000.00

Estimate Rating:

Project Name: Sandy Blvd. Widening to 4 lanes

Map ID: 89 **Time Frame:** 10 years

Project Type: Road

Operation Area: Troutdale/TRIP

Project Description: Sandy Blvd. widen to 4 lanes and center turn lane (165th-202nd) with sidewalks and bike lanes.

Purpose: Improve east west capacity and serve developing industrial property.

JDE NUM:

RTP Related: 2074

Recent Study:

Conditioned Project RTP 2025 Constrained

Identified in STIP RTP 2025 Illustrative

Total Cost: \$26,040,578.00

Year of Cost Estimate:

Federal:

State:

City:

SDC:

Port Share Committed:

Port Share Forecasted:

Private:

Other:

Unfunded: \$26,040,578.00

Estimate Rating: N/A

T2/Swan Island Area Projects

2008 Port Transportation Improvement Plan

KEY TO FEATURES

Priority/Non-Priority
Projects



Bike/Ped



Road



ITS



Rail

Railroad

Freeways

Major Arterials

Streets

Open Water



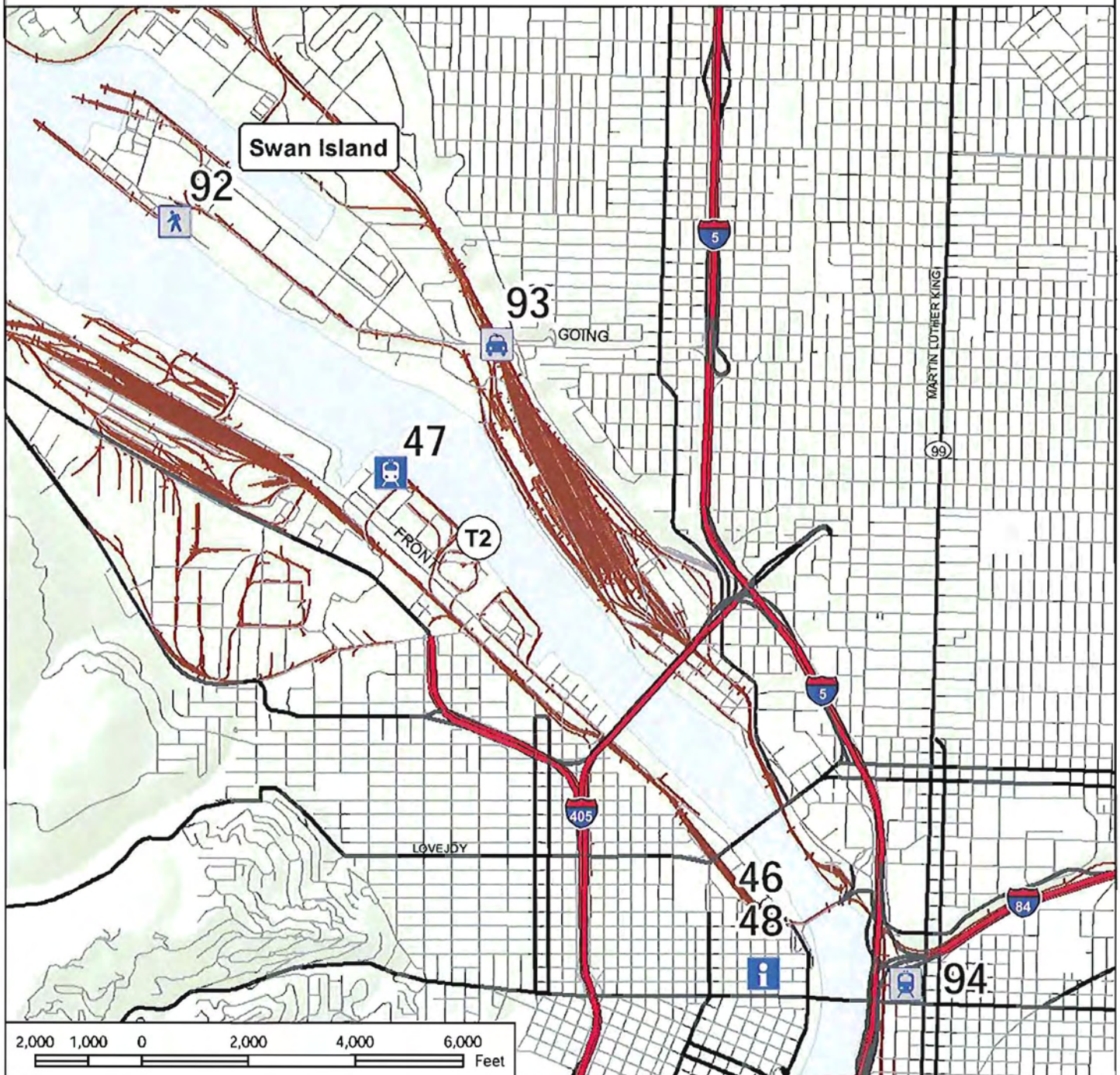
Port of Portland

Marine & Industrial Development Department
Corporate Planning Section
P.O. Box 3529
Portland, OR 97209
503-944-7613



Numbers refer to map number in document.

Base Data Source: METRO RLIS, 2007.
PTIP Data: Port of Portland



T2/SWAN ISLAND AREA PROJECTS

Project Name: North Willamette Greenway Trail

Map ID: 92	Time Frame: 20 years	Total Cost: \$200,000.00
Project Type: Bike/Ped		Year of Cost Estimate: 2007
Operation Area: T2/Swan Island		Federal:
Project Description: Pedestrian and bicycle trail from the St. Johns Bridge to the Steel Bridge along the Willamette River.		State:
		City:
		SDC:
Purpose: Improve pedestrian and bicycle connectivity in North Portland.		Port Share Committed:
		Port Share Forecasted:
JDE NUM:		Private:
RTP Related: 1147		Other:
Recent Study:		Unfunded: \$200,000.00
<input type="checkbox"/> Conditioned Project	<input type="checkbox"/> RTP 2025 Constrained	Estimate Rating:
<input type="checkbox"/> Identified in STIP	<input checked="" type="checkbox"/> RTP 2025 Illustrative	

Project Name: Going St. Rail-Overcrossing Improvement

Map ID: 93	Time Frame: 5 years	Total Cost: \$3,000,000.00
Project Type: Road		Year of Cost Estimate:
Operation Area: T2/Swan Island		Federal:
Project Description: Widen intersection and add additional eastbound lane on structure.		State: \$3,000,000.00
		City:
		SDC:
Purpose: Provide through movement capacity for traffic entering and exiting Swan Island.		Port Share Committed:
		Port Share Forecasted:
JDE NUM:		Private:
RTP Related: 1109		Other:
Recent Study: Swan Island Transportation Analysis (1995)		Unfunded:
<input type="checkbox"/> Conditioned Project	<input checked="" type="checkbox"/> RTP 2025 Constrained	Estimate Rating: N/A
<input type="checkbox"/> Identified in STIP	<input checked="" type="checkbox"/> RTP 2025 Illustrative	

T2/SWAN ISLAND AREA PROJECTS

Project Name: Graham Line Connection

Map ID: 94

Time Frame: 5 years

Total Cost: \$15,000,000.00

Project Type: Rail

Year of Cost

Estimate: 2006

Operation Area T2/Swan Island

Federal:

Project Description: This project will create a new track connection between the Graham Line, which runs parallel with I-84 through Sullivans Gulch and the Brooklyn Sub, UP's north-south line through Portland.

State:

City:

SDC:

Purpose: This connection will allow UP rail traffic entering Portland from the east to turn south onto the Brooklyn Sub from the Graham Line. Currently UP rail traffic entering Portland from the east and intending to head south on the Brooklyn Sub must take the Kenton Line to Peninsula Junction then travel through the Peninsula Tunnel to connect with the Brooklyn Sub north of Albina Yard. This project will eliminate delay and increase system capacity.

Port Share

Committed:

Port Share

Forecasted:

JDE NUM:

RTP Related:

Private:

Recent Study: I-5 Rail Capacity Study (HDR, 2003)

Other:

- Conditioned Project
- RTP 2025 Constrained
- Identified in STIP
- RTP 2025 Illustrative

Unfunded: \$15,000,000.00

Estimate Rating: N/A

2008 Priority Marine Terminal Capital Project List

Project	Description	Cost	Readiness	Strategic Impact
Terminal 6 Container Crane Purchase (Crane #6381) <i>Project #(s): 100364, 100841</i>	Purchase of one post-panamax container crane to permit the efficient handling of larger container ships. Includes required electrical upgrades to the dock. This crane will bring the number of post-panamax cranes at Terminal 6 to four.	\$10.9 million	The crane is scheduled for delivery in 2008. This project has received \$7.5 million in ConnectOregon funding.	Critical to meeting customer requirements. 810 jobs generated per weekly container service. Direct Portland service saves Oregon shippers more than \$50 million annually.
Terminal 6 Optical Character Recognition <i>Project #(s): 100840, 100532</i>	Purchase and install OCR (Optical Character Recognition) software and hardware. Construct two buildings for housing the OCR hardware and associated infrastructure. Install License Plate OCR cameras on gate pedestals and integrate into Terminal Operating System.	\$2.7 million	This project is open and is in the construction phase. Target completion date is December 2007.	This project will automate data capture at the truck gates, increasing operational efficiency.
Terminal 6 Wireless Network and Mobile Data Units <i>Project #(s): 100351</i>	Install a wireless network covering the Terminal 6 facility and provide new mobile data units (MDUs) to send data over that network.	\$300,000	An assessment and alternative study is complete. Project is now in preliminary design.	This project will improve operational efficiencies associated with day to day activities at Terminal 6.
Terminal 6 Berth Deepening and Scour Protection <i>Project #(s): 100194</i>	Design, permitting, and construction of the scour protection and deepening of Terminal 6 container berths.	\$3.4 million	The installation of scour protection is complete. The berth deepening portion of the project will start in November 2007 and will be completed in February 2008.	The berth deepening, which is a key component of the Channel Improvement Project, will permit better utilization of vessels calling Terminal 6. The scour protection will protect the Port's investment in the dock structure.
Marine Access Control and Surveillance <i>Project #(s): 100344</i>	Install new security gate systems at Terminals 4 and 6; install or upgrade remote access gates, fencing improvements; install or upgrade of CCTV systems, and video analysis/policy management software.	\$3.4 million	The project is open and is presently under construction. Project completion is targeted for December 2007.	This project will strengthen entry gate and perimeter access controls and enhance CCTV surveillance capabilities at Terminals 4 and 6.

Project	Description	Cost	Readiness	Strategic Impact
T-6 Crane Rail Improvements and Tie Backs	Design, permit, and construct additional crane rail tie-backs to Berth 604 east and Berth 605, and add 100' crane rail to Berth 604 west.	\$4.6 million	Preliminary engineering has been completed. Final design and construction is contingent on business need.	This project will improve the strength of the dock and provide the crane rail necessary to handle two post-panamax vessels simultaneously, protecting existing investments and providing long-term access to markets to regional shippers.
Terminal 6 Container Dock Extension	Extension of Berth 605 upstream by 600 feet or more to facilitate handling of longer container vessels. Also includes the extension of the 100-ft gauge crane rail.	\$19.5 million	The pre-design for these improvements has been completed as part of the Terminal 6 Berth Improvement Study. Execution of this project is contingent upon the business situation.	Modern container vessels are not only deeper and wider, they are also longer. This project will lengthen the berths, preserving Terminal 6 as a three-berth facility capable of handling the longer vessels.
Terminal 6 Additional Post-Panamax Cranes	Acquisition of two additional post-panamax cranes (#6382 and #6382) to make Terminal 6 a two-berth post-panamax facility	\$20.0 million	Purchase of the additional cranes will be phased according to business need and availability of funding.	This project would provide Portland with a two-berth post-panamax vessel capability. It anticipates the eventual need to serve multiple post-panamax vessel strings at Terminal 6.
Terminal 6 Yard Equipment (New) <i>Project #(s): 100944, 100529</i>	Purchase eight (8) container chassis and three (3) reachstackers.	\$1.75 million	Implementation of this project is contingent on business need and funding.	The project uses newer container chassis that allow for a decrease in vessel turn around time. The new reachstackers will increase operating hours between down times for maintenance, and will also produce fewer air emissions than the equipment they will replace.
Terminal 6 Container Crane Modernization <i>Project #(s): 100952, 100953</i>	On Crane 6379, upgrade electronics and provide new programmable logic controllers for the motor drives. On Crane 6378 (heavy lift crane) upgrade the electronics, provide new PLCs to control motor drives. Relocate in the line-up and paint the trolley girder beam. On Cranes 6373, 6374, and 6375, upgrade the computer systems and software.	\$4 million	Implementation of this project is contingent on business need and funding.	This project will modernize some of the Port's older container cranes and thereby improve efficiencies in the transfer of containerized cargo between four modes of transportation: ocean vessel, rail, truck, and river barge.

Project	Description	Cost	Readiness	Strategic Impact
Terminal 6 Honda Facility Upgrade <i>Project #(s): 100304, 100323, 100324</i>	This program will cover three distinct projects: 1) Berth 607 dock modifications; 2) rail ramp expansion; and 3) a type, size, and location study for a rail crossing at Terminal 6.	\$10.2 million	A new lease with Honda was approved by the Port Commission in October 2004. The dock project is currently open and work is underway. The rail crossing study is complete. Construction of the rail crossing is contingent on business need.	The project is needed to meet customer requirements. Approximately 200 direct jobs are generated by the Honda operation. Overall Terminal 6 generates 1,500 direct jobs.
Terminal 4 Automobile Yard Expansion <i>Project #(s): 100769</i>	Design and construct 6 acres of porous pavement parking for the storage of imported automobiles.	\$2.5 million	Design is 90% complete.	The project will provide additional land to meet auto storage capacity needs of Toyota, in furtherance of the Port's automobile import line of business. Toyota employs 200+ persons.
Terminal 4 Barge Facility Relocation <i>Project #(s): 100472</i>	Design and construct a new barge receiving facility for the Terminal 4 grain facility. Slip 1, the location of the existing barge facility, will potentially be used as a confined disposal facility as part of the Terminal 4 Early Action Sediment Clean-up rendering the existing barge facility unusable.	\$8.0 million	Relocation of the barge receiving facility is contingent upon the closure of Slip 1 and the resumption of grain operations at Terminal 4.	Approximately 40 to 50 percent of all wheat and barley exported from the Columbia\Willamette river system is delivered to the export terminal by barge. This includes wheat grown by Oregon grain growers. A barge facility is a critical component to the operations of the Terminal 4 grain elevator.
Berth 503 Dock Rehabilitation <i>Project #(s): 100829</i>	Repair the priority components of the Berth 503 to address advanced corrosion on the girders and beams which support the dock structure.	\$4.7 million	The project is open and work has begun.	This project makes significant and necessary life-extending repairs to Berth 503 to keep the structure serviceable for the next 30 years.

Project	Description	Cost	Readiness	Strategic Impact
Berth Deepening: Berths 401, 501, and 503 <i>Project #(s): 100863, 100860, and 100861</i>	Deepen berths at Terminal 4 and Terminal 5 to allow deeper draft vessels to transit the planned 43-foot channel.	\$1.6 million	The projects to deepen Berths 501 and 503 are now open and preliminary permitting efforts are underway. Berth 401 deepening is contingent upon business need.	The deeper berths will allow better utilization of panamax-class bulk vessels.
Portland Bulk Terminal 4th Rail Loop <i>Project #(s): 100956</i>	Design and construct a fourth rail loop within Portland Bulk Terminal's potash export facility at Terminal 5.	\$7 million	This project is contingent upon business need.	The project will increase the throughput capacity by facilitating the receipt and dispatch of unit trains.
Terminal 4 Pipeline Infrastructure <i>Project #(s): 100955</i>	Design and construct a common-user pipeline corridor to Berth 401 for the transport of liquid bulks to and from ships and barges.	\$5.6 million	This project is contingent upon business need and funding.	The pipeline infrastructure would serve as many as four tenants at Terminal 4. Total related employment is approximately 100 jobs.
Terminal 2 Rail Improvements	Design and construct an extension of the rail tracks serving Warehouse 205 to connect to the downstream end of the Terminal 2 rail loop. The project would also install a new rail scale.	\$1.5 million	This project is contingent upon business need and funding.	The project will improve rail service options and capacity within Terminal 2.

Aviation External Funding Project List

Project	JDE Project #	Description	Cost	Readiness
TTD relocation of Taxiway B, Phase 1 & 2	100282 100281	In order to comply with new FAA requirements for distances between taxiways and runways, Taxiway B at Troutdale airport needs to be relocated 50 feet to the south. If the taxiway is not relocated, the FAA could restrict the size of aircraft that can land and take off at Troutdale or disallow future grants to the airport.	\$2.2M	Design to begin in June 2007 through April 2008. Construction during Summer of 2008 and 2009, May through October.
HIO High Speed Exits	100464	Hillsboro's runway system is currently at 107% capacity. The high speed exits constructed on the airport's longest runway will allow landing aircraft to exit the runway faster. This will help to relieve a portion of the over capacity of the airport system until a third runway is constructed in 2010 and 2011.	\$2.43M	Design underway to be completed in April of 2007. Construction during Summer 2007, May through November.
HIO Taxiway A3 extension	100655	Hillsboro's runway system is currently at 107% capacity. The extension of Taxiway A3 constructed near the airport's longest runway in coordination with the high speed exits will allow aircraft to exit the runway faster. This will help to relieve a portion of the over capacity of the airport system until a third runway is constructed in 2010 and 2011.	\$2.2M	Design to begin in June 2007 through April 2008. Construction during Summer of 2008 and 2009, May through October.

Project	JDE Project #	Description	Cost	Readiness
PDX ITS	100680	Improve traveler information and automated vehicle identification system.	\$1M	
PDX North Runway rehabilitation	100334	Rehabilitation of the north runway is a periodic effort (every 12 years) to keep the runway in safe operating condition for aircraft.	\$11.2M	Design to begin in June of 2008 through April of 2009. Construction during Summer 2009, May through October.
PDX North Runway Extension	100334	In order to preserve international service and domestic long haul routes to the Portland metropolitan region, an extension to the north runway is necessary to accommodate the larger aircraft when the south runway is closed for the summer in 2011. These larger aircraft require a runway longer than the 8000' north runway. Currently these aircraft exclusively use the south runway for take off which is 11,000 feet in length.	\$61M	Design to begin in June of 2009 through April of 2010. Construction during Summer 2010, May through November.
Mulino Airport Development Improvements	N/A	Construct a fueling system, hangars, and private access drive to serve parcels that can be redeveloped.	\$2.2M	Construction can begin starting in 2008.

