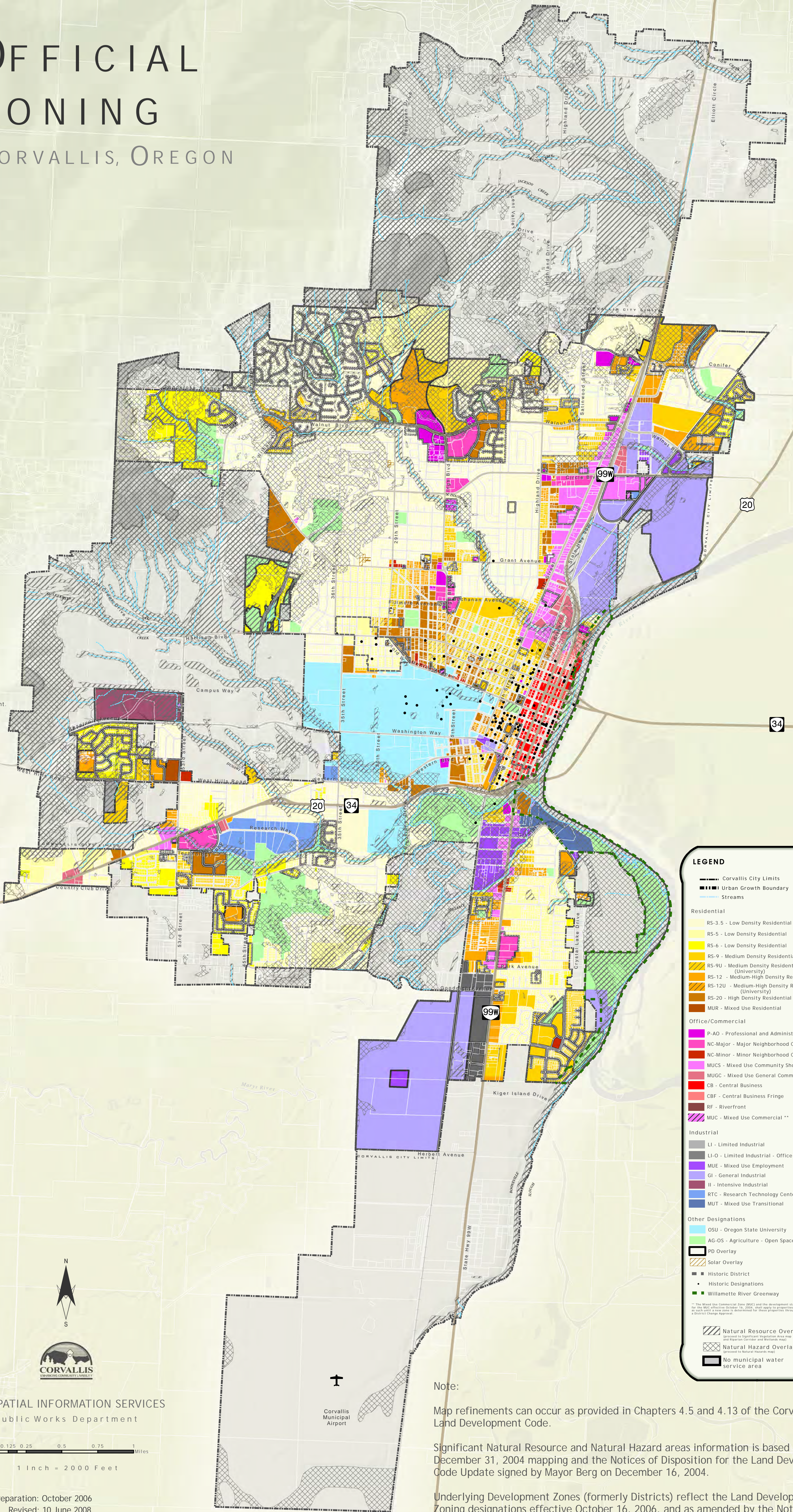


OFFICIAL ZONING

CORVALLIS, OREGON

NOTE:
Dunawi Creek,
and the
associated
riparian corridor
may be relocated
through wetland
(WC-SOU-W-13)
to original alignment.



LEGEND

- Corvallis City Limits
- Urban Growth Boundary
- Streams

Residential

- RS-3.5 - Low Density Residential
- RS-5 - Low Density Residential
- RS-6 - Low Density Residential
- RS-9 - Medium Density Residential
- RS-9U - Medium Density Residential (University)
- RS-12 - Medium-High Density Residential
- RS-12U - Medium-High Density Residential (University)
- RS-20 - High Density Residential
- MUR - Mixed Use Residential

Office/Commercial

- P-AO - Professional and Administrative Office
- NC-Major - Major Neighborhood Center
- NC-Minor - Minor Neighborhood Center
- MUCS - Mixed Use Community Shopping
- MUGC - Mixed Use General Commercial
- CB - Central Business
- CBF - Central Business Fringe
- RF - Riverfront
- MUC - Mixed Use Commercial **

Industrial

- LI - Limited Industrial
- LI-O - Limited Industrial - Office
- MUE - Mixed Use Employment
- GI - General Industrial
- II - Intensive Industrial
- RTC - Research Technology Center
- MUT - Mixed Use Transitional

Other Designations

- OSU - Oregon State University
- AG-OS - Agriculture - Open Space
- PD Overlay
- Solar Overlay
- Historic District
- Historic Designations
- Willamette River Greenway

Natural Resource Overlay
(Approved to Significant Vegetation Area map and Riparian Corridor and Wetland map)

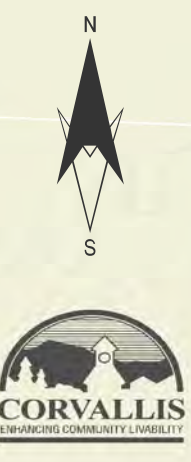
Natural Hazard Overlay
(Approved to Natural Hazards map)

No municipal water service area

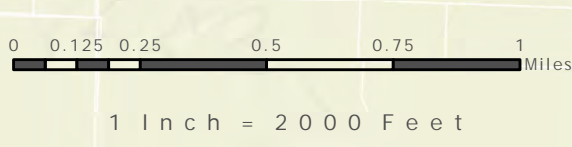
Note:
Map refinements can occur as provided in Chapters 4.5 and 4.13 of the Corvallis Land Development Code.

Significant Natural Resource and Natural Hazard areas information is based upon December 31, 2004 mapping and the Notices of Disposition for the Land Development Code Update signed by Mayor Berg on December 16, 2004.

Underlying Development Zones (formerly Districts) reflect the Land Development Code Zoning designations effective October 16, 2006, and as amended by the Notice of Disposition to adopt this map signed by Mayor Berg on October 17, 2006.



GEOSPATIAL INFORMATION SERVICES
Public Works Department



Date of preparation: October 2006
Revised: 10 June 2008